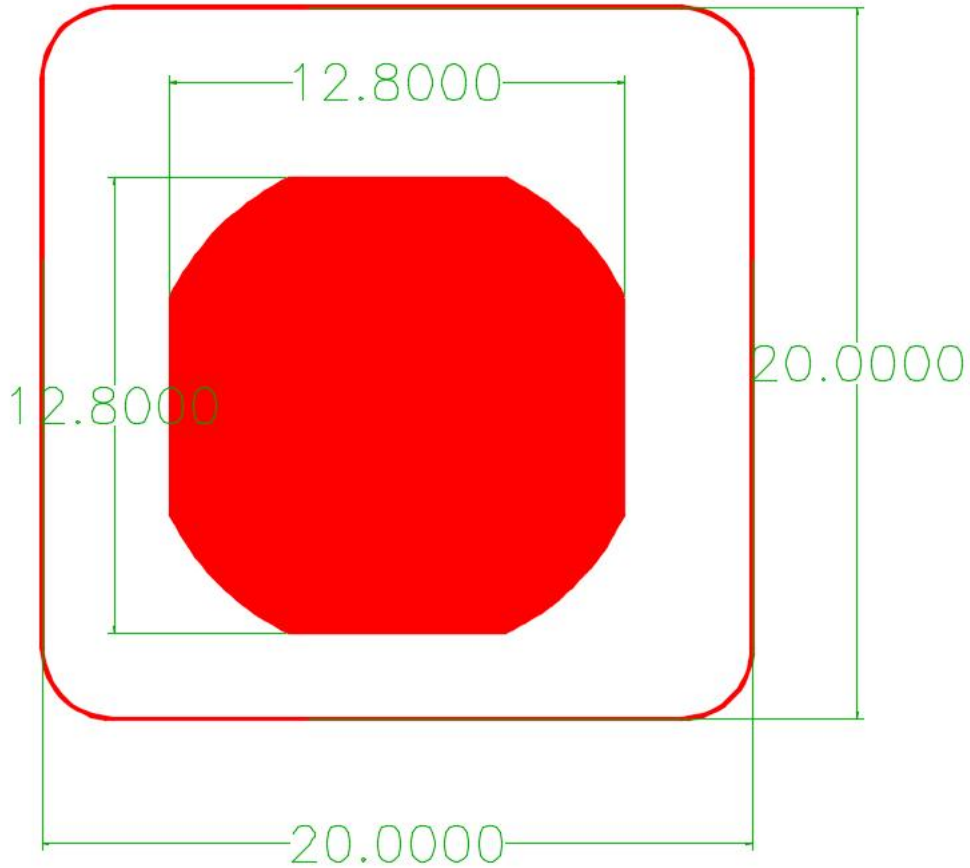


# EDC114 Antenna test report

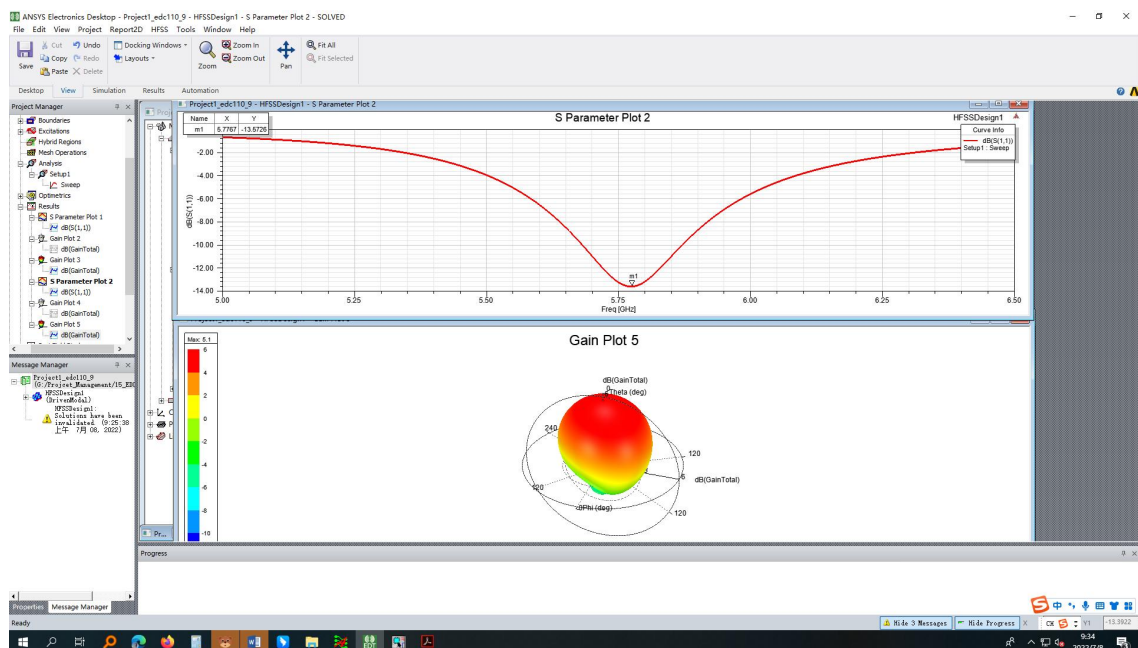
## 1. Antenna size diagram

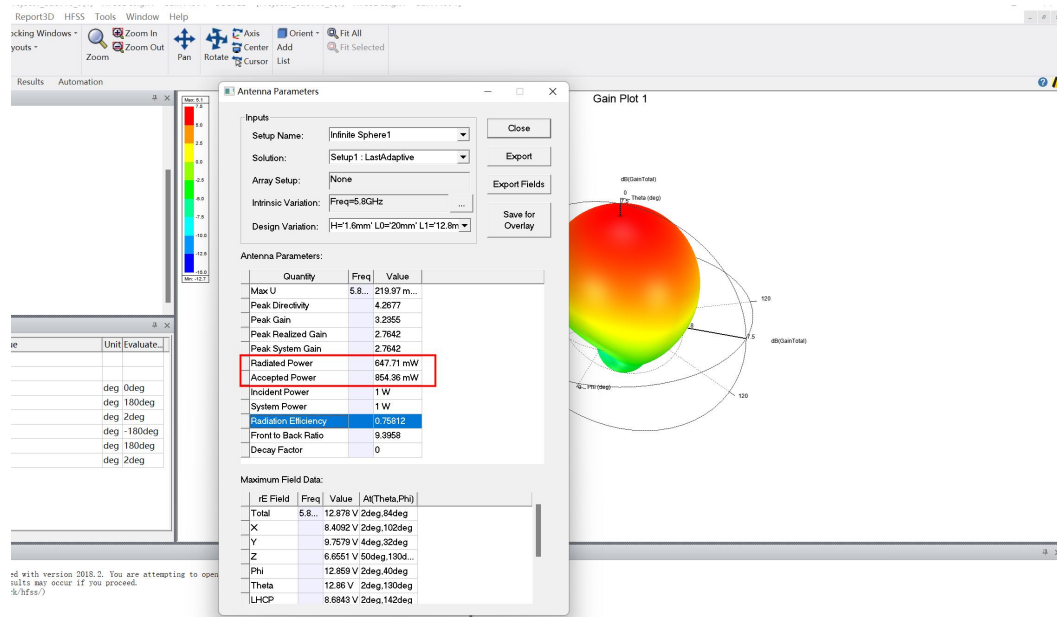
Antenna metal patch: 12.8\*12.8mm

Antenna GND: 20\*20mm



## 2. 2D/3D gain map





### 3. 2D/3D simulation data

S11:5.77GHz@-13.57dB

Gain: max3.24dBi

Antenna efficiency =radiated power/incident power=647.71mW/1W=0.64771

### 4. Antenna Specifications

Antenna Specifications	
Design Specifications	Typical
Antenna Type*	Built-in (integral antenna)
Working Frequency	5.8GHz(Center Frequency)
Antenna Gain	3.24dBi
Impedance	50 Ω
manufacturer	ShenZhen Easydetek Technology CO. LTD