

SIZE : 75*100mm

Dual USB WIFI Smart Outlet User Manual



Point your phone's camera at this code
or search your phone's app store for "Smart life"



Model:RX-XS-US-005

★ Specification

2 Wall Outlet Dual USB Charger

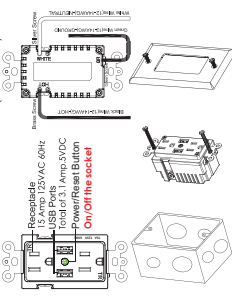
Material	PC+ABS flame retardant grade V0
Receptacle Rating	15Amp, 125V AC
USB Rating	Two USB ports with total 3.1Amp, 5V DC
Operating Temperature	-4 to 149°F (-20 to 65°C)
Wire Terminal	#14-10AWG
Strip Length	0.5 inch (back wire hole) 1 inch (crown terminal)

★ About this product

- This innovative product makes it easy to add smart features to your home. Installation is easy using the dedicated Smart Life App, and you can control your smart devices through Google Home.
- This product combines smart outlets, USB charging, intelligent power management system that uses your home's own WiFi (2.4GHz) signal.
- NOTE**
This equipment should be installed and operated with a minimum distance of 20 centimeters between the radiator and your body.

-01-

★ Wiring Diagram



- Power on the device and confirm that indicator light rapidly blink (2 times/second).
- If the indicator light not blink (2 times/second) Please hold reset button **before starting, turn the circuit breaker and test to make sure there is no power through the line.**
- After the power is confirmed, connect the new outlet as shown above.
- Attach the outlet using the included screws.
- Insert the faceplate carefully, making sure the prongs on the faceplate line up with the slots on the outlet.
- Attach the faceplate with the short screws provided.
- Turn on the breaker and test with thorough.

-02-

★ How to Use This Outlet

- Basic Installation**
 - Configure the outlet. Tap to configure the outlet. Tap to configure the outlet.
- Wi-Fi Connection**
 - Your phone must be connected to your home Wi-Fi network to configure the outlet on the outlet list. The light should turn quickly, if it doesn't, press and hold the power button for 5 seconds.
 - On the app, press the "ADD DEVICES" button and choose the Electrical outlet.
 - Tap "Next" and enter your SSID (WIFI NETWORK NAME) AND PASSWORD, then enter your WIFI password.
 - It can take up to a minute for the configuration to complete.
 - Enter a name for the outlet (like "Living Room") to finish the installation.
- Operation**
 - Tap "On" to turn on the outlet (like "Living Room") in the device list to control it.
 - Tap "Off" to turn on power to the USB ports.
 - Tap "Main Switch" to turn the entire outlet on or off.
 - Tap "Timing" to set a schedule for this outlet.

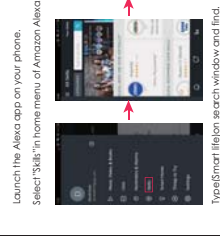
-03-

★ How to Use This Outlet



-04-

★ Adding an Alexa Skill



-05-

★ Google home

- Tap "Home Control" in the hamburger menu on the Google Home app's home page. Then tap "x".
- Find "Smart Life" in the list. In the new window, select your Smart Life account's region, type your Smart Life account and password, then tap "Link Now". After you assign rooms for devices, your devices will be listed in the Home Control page.

-07-

★ Warning

- Warning: Changes or modifications to this unit or its assembly, approved by the authority responsible for compliance could void the user's authority to operate the equipment.
 - NOTE: This equipment has been tested and found to comply with the limits for Class B digital device, pursuant to Part 15 of the FCC rules. These limits are designed to provide reasonable protection against harmful interference to residential installation. This equipment uses frequency hopping technology to reduce the potential for interference, and is used in accordance with the restrictions, may cause harmful interference to radio communications.
- However, there is no guarantee that interference will not occur in a particular installation. If you experience interference, you may wish to take the following steps:
- Reorient or relocate the receiving antenna.
 - Increase the separation between the equipment and receiver.
 - Connect the equipment to an outlet on a circuit different from that to which the receiver is connected.
 - Consult the dealer or a registered radio/TV technician for help.

-09-

Certificate

Product name: 2 Wall Outlet Dual USB Charger
Receptacle Rating: 15Amp, 125VAC
Model: RX-XS-US-005

Technical specification is according to **ANSI UL Std 498 and Cos Std C22.2 NO. 42 standard.**

This product is qualified according to the delivery inspection

Inspector: _____
Date of manufacture: _____

-10-

- Click on the App(Smart life) and press ENABLE to link Alexa.
 - The following voice commands are supported.
 - Alexa, turn on the (USB).
 - Alexa, turn on the (USB).
 - Alexa, turn on the (outlet).
 - Alexa, turn on the (device name).
 - Alexa, turn off the (device name).
- Once the Smart Life App has been linked to Alexa, you can control any function of your outlet. Note: If you have renamed the outlet in the Smart Life app, it may not appear in the Alexa app, unless the Alexa app can recognize the name.

-06-

Warranty card

Dear user
Thank you for your purchase of the company's products. All of the company's products are enjoying a 3-year replacement 1 year warranty service policy. In order to ensure that the legitimate interests, read the warranty card and use stakekeeping.

- This warranty card as the only evidence of the Company's product warranty.
- Product since the date of sale within 24 months, such as performance failure occurs, the product itself and the packing is complete no scratch, you can replace the same type of products (Other than human factors).
- Product since the date of sale within one year from the event of the failure of performance warranty services (Other than human factors).
- Out of warranty in the warranty.
- Within non-staff test down to the not covered under warranty.



-11-