



# WPACC2 Antenna Datasheet

The latest version V1.1

Wi-linktech Communication Technologies (Shanghai) Co.,Ltd.

Ltd COPYRIGHT © 2022 -2024

# 1.Overview

This antenna specification describes the RF performance of the WPACC2 complete PCBA onboard antenna, ensuring that the VSWR is less than 3 in the 2.4GHz ISM band when connected to a 50 ohm source, the gain map of the antenna in different directions, and the antenna efficiency and gain values in different frequency bands.

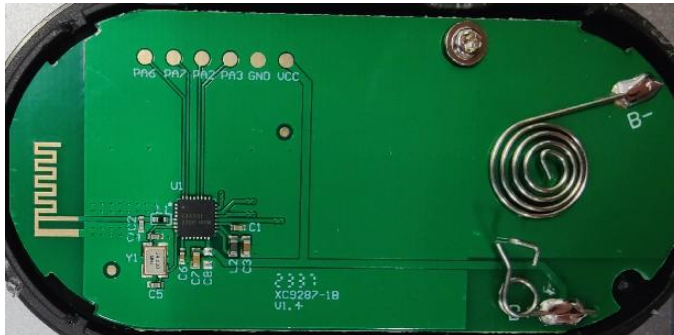


图 1- 1 : WPACC2 PCBA

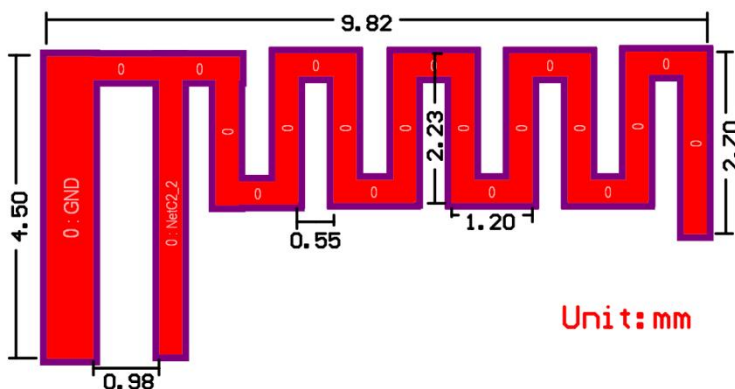
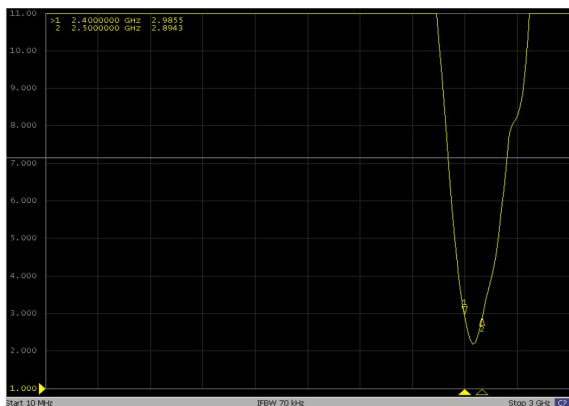


图 1- 2 : WPACC2 PCBA Onboard antenna dimensions

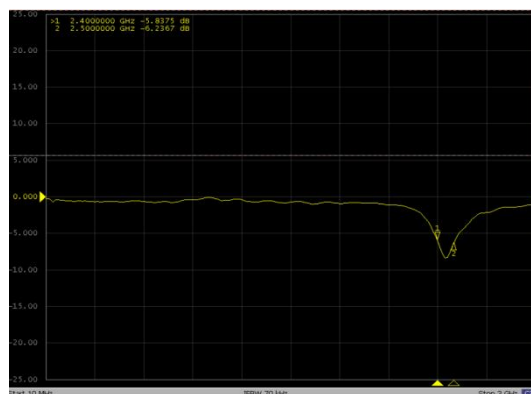
PCB antenna information sheet					
number	Component name	Model number	specification	manufacturer	remark
3	PCB天线	CBT-RBT11	LDS,Gain = -0.06dBi,SABICNX10302	Dongguan Xuancai Photoelectric technology Co.,LTD	(Spare part) Room 202, unit 1, building 1, No. 2, Baoshi Road, jiaoyitang, Tangxia Town, Dongguan City, Guangdong Province

表 1-1 : WPACC2 PCBA Onboard antenna information

## 2.Return loss、 VSWR



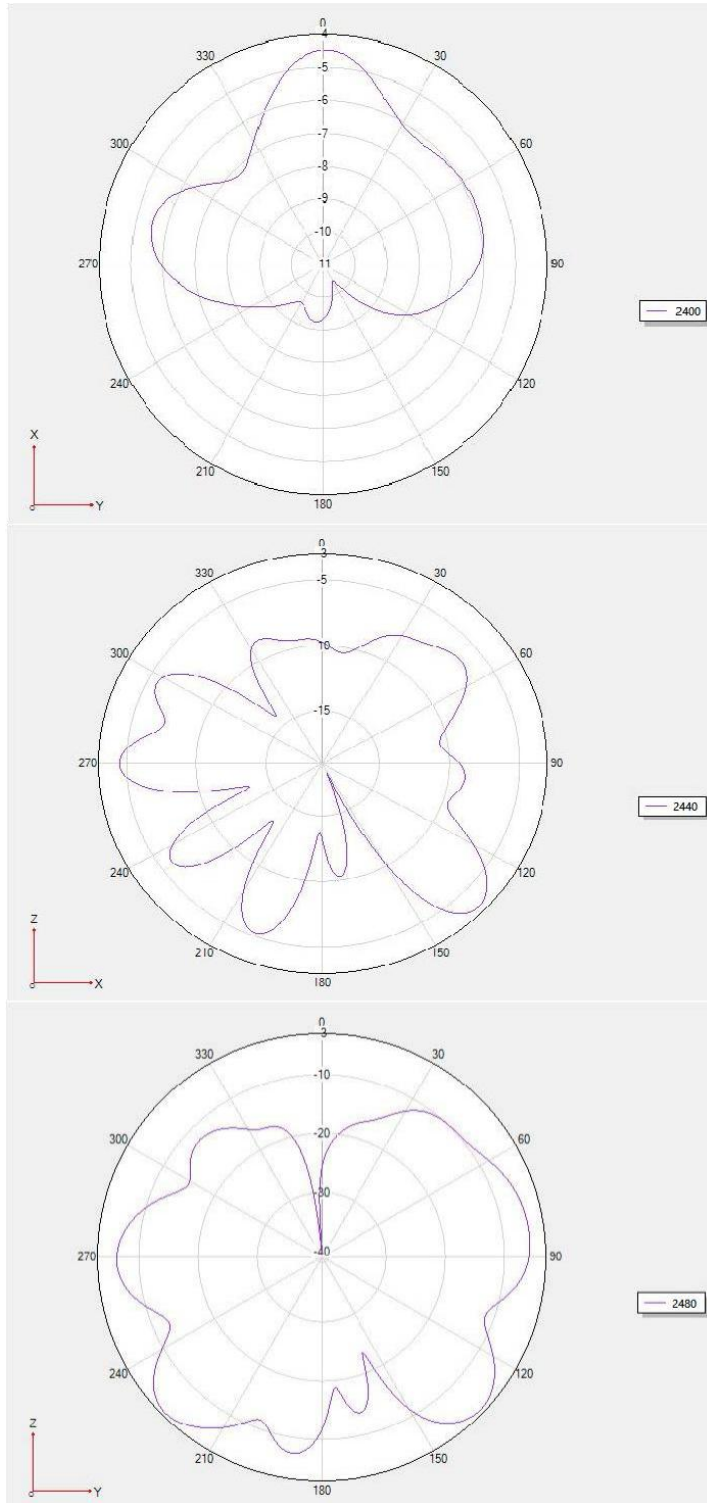
VSWR



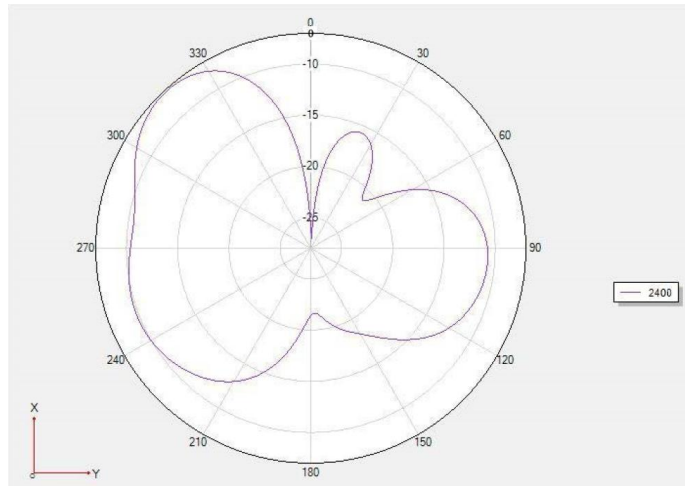
Return loss

# 3. Direction and gain diagram

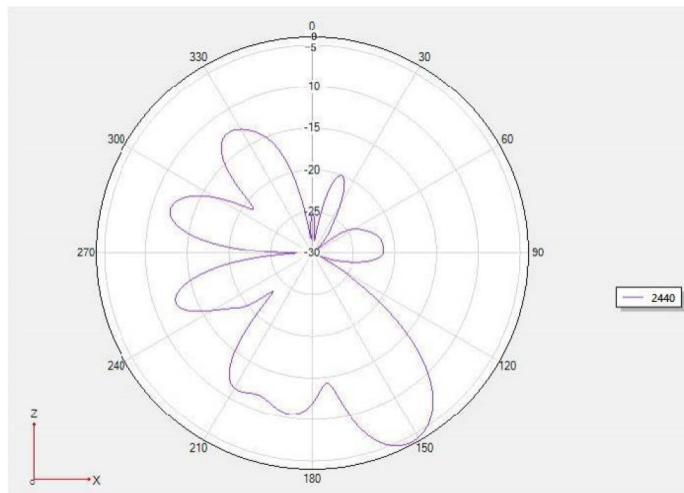
Etheta[Unit:dBi]



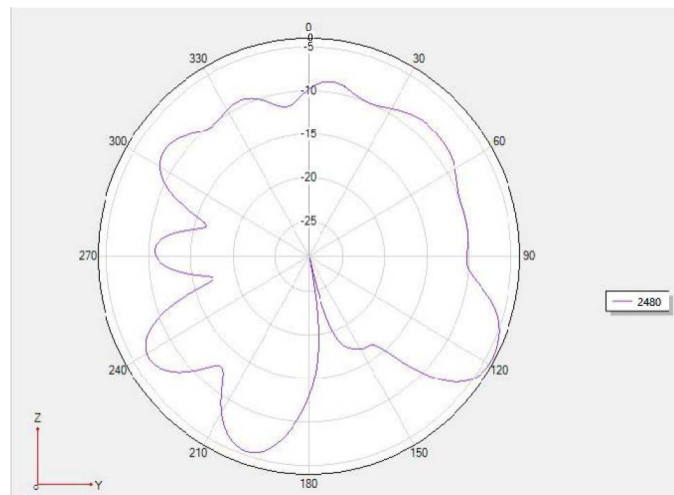
# Ephi[Unit:dBi]



增益: -1.90dBi



增益: -0.72dBi



增益: -0.06dBi

## 4. Antenna gain meter

Frequency / MHz	Efficiency / %	Gain/ dBi
2400	22.29	-1.90
2410	24.61	-1.52
2420	26.72	-1.15
2430	28.62	-0.77
2440	27.97	-0.72
2450	30.65	-0.17
2460	30.04	-0.16
2470	28.77	-0.17
2480	28.70	-0.06
2490	26.38	-0.34
2500	25.77	-0.40