

Product Specification

Wall Charger:

Input: AC 100-240V, 50/60Hz, 0.5A(Max.)

Output: 9V==1.67A

Wireless Charger:

Input: 9V==1.67A

Output: 9V==1.1A

Output: 5V==1A

Charging distance: ≤ 8mm

Charging efficiency: ≥ 72%

Dimensions: φ 3.5" (89mm) x1.5" (38mm)



Disclaimer of Damages

In no event shall Brandstand Products, or its suppliers, be liable for indirect, incidental, or consequential damages, loss of profit, loss of use or data, or interruption of business, whether the alleged damages are labeled in tort, contract, or indemnity, even if Brandstand Products or its suppliers has been advised of the possibility of such damages. Some states do not allow the exclusion or limitation of incidental or consequential damages, so the above limitation may not apply.

Limited 1 Year Warranty

Products are warranted by Brandstand against manufacturing defect in material and workmanship under normal use for one year from the date of purchase. Defective products will be exchanged for the same or comparable item.

Return Policy

For a refund or exchange, products must be returned within 30 days of original purchase date. Customers must contact Brandstand to obtain a Return Merchandise Authorization (RMA) number and specific shipping instructions prior to returning the product. Any product returned without a RMA will be refused. Product must be in original box with original accessories and packaging undamaged, clean and brand-new condition. Products that are incomplete, damaged or have been used will require a deduction in refund. There is a 30% restocking fee on all returned products. Refunds will be issued by check. Refund checks are mailed the 10th day from the date the product is returned. Delivery charges and customized products are non-returnable.

Important Safeguards

- Ensure the unit is plugged into an AC 120V-60Hz outlet (US version) 100-240V-50/60Hz (EU and UK versions). The use of incorrect outlets could cause the unit to malfunction or catch fire.
- To reduce the risk of fire or electrical shock, do not use this device with a receptacle in which the slot openings do not align with the blades.
- Do not allow children to operate the unit without adult supervision.
- Always ensure the product is unplugged from the electrical outlet before relocating or cleaning it.
- Keep the power cord and product away from heated surfaces.
- The unit should not be exposed to dripping or splashing and no objects filled with liquids, such as vases should be placed on or around the product. It should not be used with aquariums or other water-related products.
- Do not place or drop product into water or other liquids. If product falls into water, immediately unplug it from the electrical outlet.
- Do not put any stress on the power cord where it connects to the product as the power cord could fray and break.
- Do not plug/unplug the product into/from the electrical outlet with a wet hand.
- Do not operate the product if it has a damaged or cut power cord or adapter, if wires are exposed, if it malfunctions, if it is dropped or damaged, or if it is dropped in or exposed to water.
- Place unit where there is good air circulation.
- The product has no user-serviceable parts. Do not attempt to examine or repair this product yourself. Only qualified service personnel should perform the servicing.
- No open flames sources, such as candles should be placed on the product.
- Product should only be used indoors and in dry locations.
- Working Temperature -10°C to +35°C

BRAND|STAND®

cubiespot®

User Manual

Model No.:

BPEST

BPESTEU

BPESTUK

Product Introduction

Thank you for purchasing the Brandstand CubieSpot. This product offers convenient wireless power charging. CubieSpot's elegant design is applicable for phones and devices in line with Wireless Power Consortium, Qi standards. Enjoy the cable-free, safe power charging experience.

The information in this document is subject to change and does not represent a commitment on the part of Brandstand. No part of this document may be reproduced, transmitted in any form or by any means electronic or mechanical, including photocopying, recording or information storage and retrieval systems, or translated into any language for any purpose other than the purchaser's personal use, without the written permission of Brandstand.

Product Features

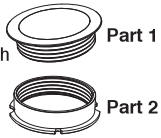
Furniture Flush Mount Charger

Convenient cable-free Qi wireless charging

Slim, stylish design

Product Description

Qi certified wireless charger up to 10W Smart adapter (US, UK, or EU plug) with 10' power cord Security P-Clamp with 1 wood screw Mini spanner tool



Applicable Devices

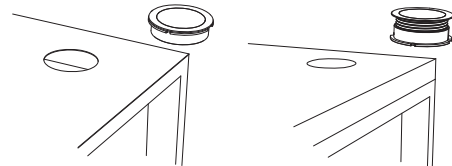
1. Devices with built-in wireless charging receiver module (Samsung S8, Iphone 8/8 Plus, Iphone X, etc.).

2. Wireless charging case with receiver module (iPhone5, iPhone 6/6 Plus, etc.).

Note: Receivers must meet WPC standard.

CubieSpot fits: Minimum table thickness of .5"

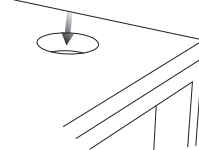
Maximum thickness of 1.75"



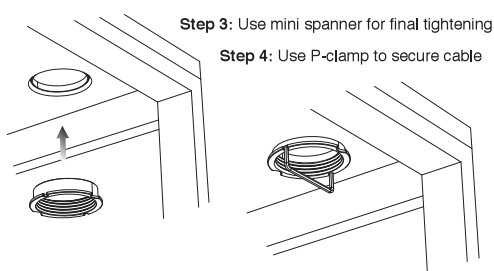
Instructions

Step 1: Cut 3.25" diameter hole in table and place unit in hole.

* Use 3.25" Diameter Hole Saw

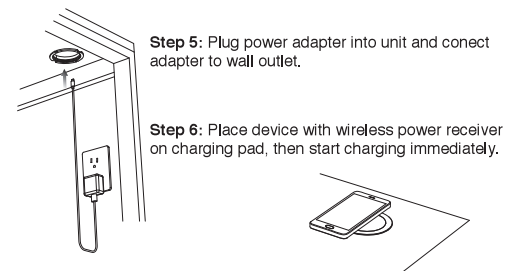


Step 2: From underside of table, rotate part 2 onto part 1



Step 3: Use mini spanner for final tightening

Step 4: Use P-clamp to secure cable



Step 5: Plug power adapter into unit and connect adapter to wall outlet.

Step 6: Place device with wireless power receiver on charging pad, then start charging immediately.

Qi Wireless Charging:

1. Place Qi enabled device on CubieSpot. When the power connection has been made, the Qi symbol in the display will be illuminated. This indicates your device is wirelessly charging.

2. FOD - Foreign Object Detection is the ability of the transmitter to detect a stray metal object in the wireless charging field. If a metallic object is placed on the charging pad, red LED will flash. Remove the metal object immediately.

CubieSpot complies with the WPC (Wireless Power Consortium) Qi Standard

Warning

Fire and Electric Shock Hazard

- Do not expose the charger to liquid, moisture, humidity, or rain. Do not use the charger near a bathtub, sink, sauna, pool, or steam room. Exposing of the charger to moisture could result in electric shock.
- Do not drop, disassemble, open, crush, bend, deform, puncture, shred, microwave, incinerate, paint, or insert foreign objects into the charger. Such actions could result in electric shock.
- Clean the charger only with a dry cloth.
- Do not expose the charger to extremely high or low temperatures.
- Do not expose the charger to sources of excessive heat, such as sunlight, fire etc. Do not place the charger near open fire sources, such as gas burners, candles or fireplaces, and avoid contact with direct solar radiation. Do not place any candles or other open-flame sources on the device. Make sure that the charger has sufficient ventilation.

Accessories and Software Information

It is recommended that the following accessories should be used:

The product software version is 2250-V1.0. Software updates will be released by the manufacturer to fix bugs or enhance functions after the product has been released. All software versions released by the manufacturer have been verified and are still compliant with the related rules.

All RF parameters (for example, frequency range and output power) are not accessible to the user, and cannot be changed by the user.

After evaluation, the product satisfied with RED Directive RF exposure required while used 20cm away from the human body.

EU regulatory conformance

Frequency bands and power

(a) Frequency bands: 110-205KHz (b) Maximum radio-frequency power transmitted in the frequency bands in which the radio equipment operates: The maximum power for all bands is less than the highest limit value specified in the related Harmonized Standard. The frequency bands and transmitting power (radiated and/or conducted) nominal limits applicable to this radio equipment are as follows: 6dBuA/m at 10m distance

DECLARATION OF CONFORMITY

Hereby, HANK Electronics Co., Ltd. declares that the equipment type BPESTEU,BPESTUK is in compliance with Directive 2014/53/EU.

The full text of the EU declaration of conformity is available at the following internet address

<http://www.hank-tech.com>

Manufacturer: HANK Electronics Co., Ltd.

Manufacturer's Address: Floor 2nd-7th,A8,Hongye Industry City, Lezhujiao, Zhoushi Road,Baoan District,Shenzhen,China

EU Importer: XXXXXX

EU Importer's address: XXXXXXXX

US Importer:TXS Industrial Design Inc. d.b.a Brandstand Products

US Importer's Address:801 E Campbell Rd. #620, Richardson, TX 75081

Tel:972-368-1450

Fax:972-763-9722

Web:www.brandstand.com

FCC NOTICE (for USA)

This device complies with part 15 of the FCC Rules, Operation is subject to the following two conditions:

- (1) This device may not cause harmful interference
- (2) This device must accept any interference received, including interference that may cause undesired operation.

The manufacturer is not responsible for any radio or tv interference caused by unauthorized modifications or change to this equipment. Such modifications or change could void the user's authority to operate the equipment.

This equipment has been tested and found to comply with the limits for a Class B digital device, pursuant to part 15 of the FCC Rules. These limits are designed to provide reasonable protection against harmful interference in a residential installation. This equipment generates, uses and can radiate radio frequency energy and, if not installed and used in accordance with the instructions, may cause harmful interference to radio communications. However, there is no guarantee that interference will not occur in a particular installation. If this equipment does cause harmful interference to radio or television reception, which can be determined by turning the equipment off and on, the user is encouraged to try to correct the interference by one or more of the following measures:

- Reorient or relocate the receiving antenna.
- Increase the separation between the equipment and receiver.
- Connect the equipment into an outlet on a circuit different from that to which the receiver is connected.
- Consult the dealer or an experienced technician for help.

This equipment complies with FCC radiation exposure limits set forth for an uncontrolled environment. This equipment should be installed and operated with minimum distance 20cm between the radiator and your body. This transmitter must not be co-located or operating in conjunction with any other antenna or transmitter