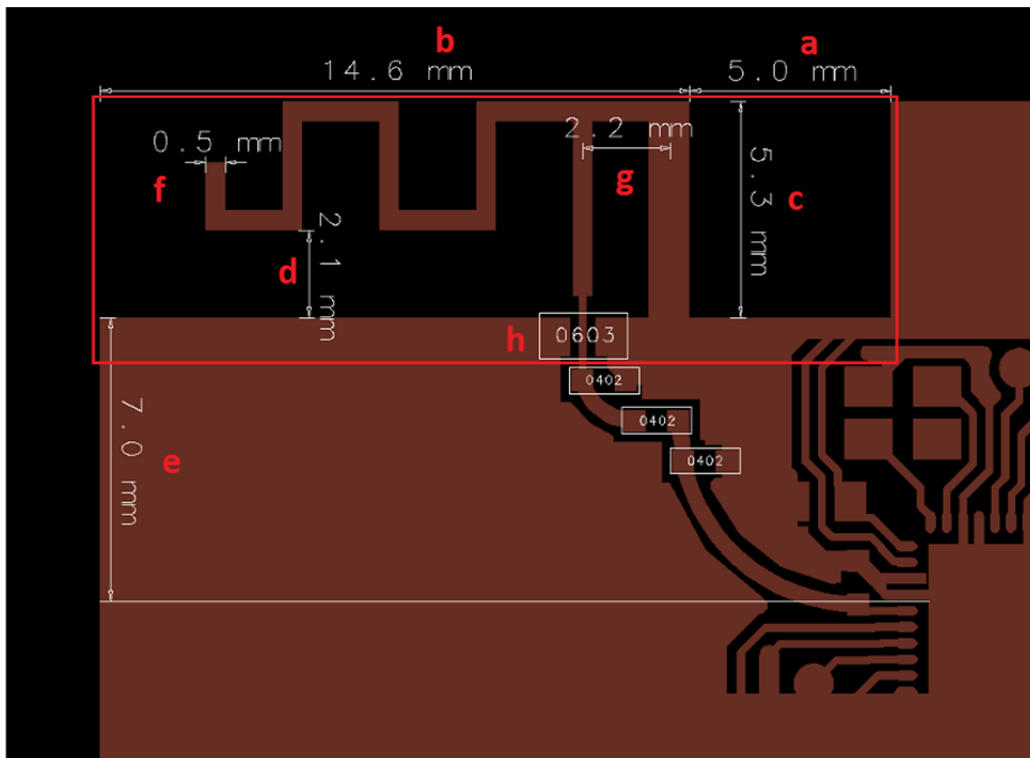


| ITEM | | specification | | |
|-----------------|---------|-------------------------|-------|-------|
| Manufacturer | | Wuhan Linptech Co.,Ltd. | | |
| Model | | K9B-ATM | | |
| Frequency Range | | 2402~2480MHz | | |
| VSWR | | 3:1MAX | | |
| Polarzation | | Linear | | |
| Frequency [MHz] | | 2402 | 2440 | 2480 |
| Gain (dBi) | Peak | 1.428 | 1.812 | 1.733 |
| | Average | - | - | - |
| Efficiency [%] | | 78 | 84 | 76 |

Antenna Dimensions

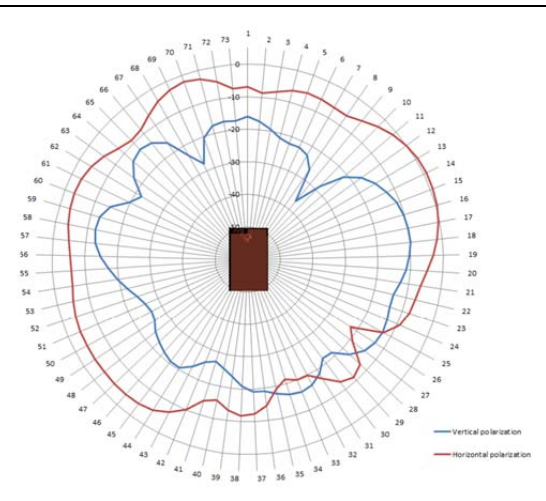


a. Clearance between antenna arm and GND plane right.

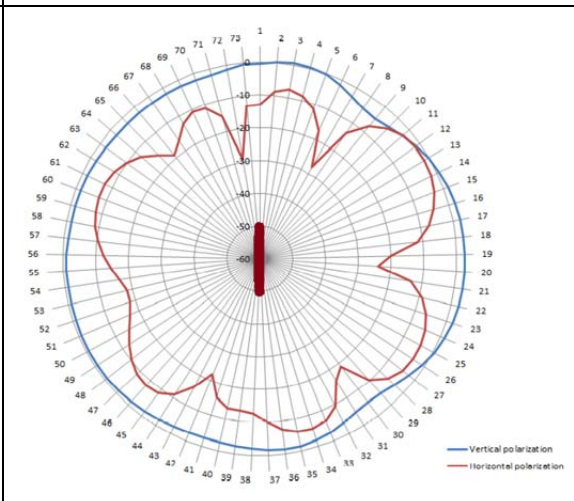
b. Antenna width.

- c. Antenna height.
- d. Clearance between the antenna arm and GND plane below.
- e. Minimum GND plane size required for correct operation of the antenna.
- f. Antenna trace width.
- g. Feed point position.
- h. 0603 resistor used to connect the two sides of the GND planes.
 - i. When no DC connection is required, a 10 pF capacitor can also be used.
 - ii. This component is essential for the correct operation of the antenna.

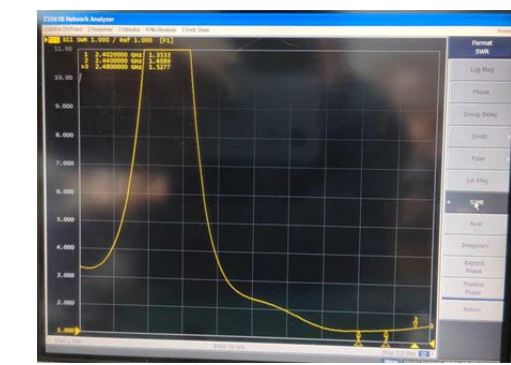
Radiation Pattern, PCB Horizontal



Radiation Pattern, PCB Vertical



SWR



Smith Chart

