

PAGE 1



LA127  
SPEAKERBUDS

Design by Alain Berteau

PAGE 2

**LINE DRAWING/PRODUCT OVERVIEW  
(NOT RECEIVED YET)**

Thank you for choosing Speakerbuds.

Before using the appliance, and to ensure the best use, carefully read these instructions. Keep this manual for future reference.

**IN THE BOX**

1xSpeakerbuds 1xUSB Type-C cable 1x User manual

**PRODUCT OVERVIEW**

1. Earbuds
2. Speaker
3. Charging case
4. Microphones
5. Bluetooth light indicator
6. Charging lightsindicator
7. USB type-C port

**FEATURES**

- True Wireless Stereo Earbuds
- 3W Bluetooth® speaker
- Dual microphone
- Environmental noise cancellation
- Rechargeable battery

**GETTING STARTED**

Make sure to fully charge Speakerbuds:

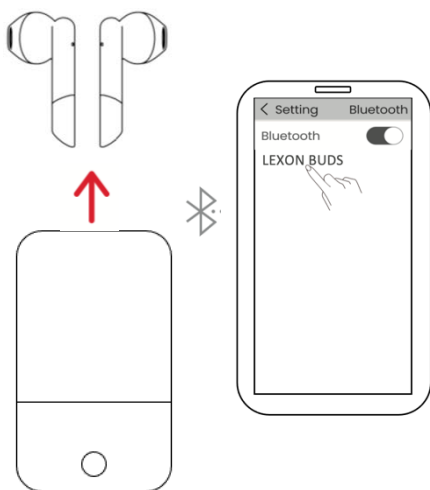
1. Plug the supplied USB Type-C cable into the charging port of Speakerbuds.
2. Plug the USB end of the cable into any 5V-1A power adapter.
3. Plug the power adapter to a power source for about 2 hours.

When the charging case is powered, the light indicator next to the charging port turns red.

When the charging case is fully charged, the light indicator next to the charging port turns off.

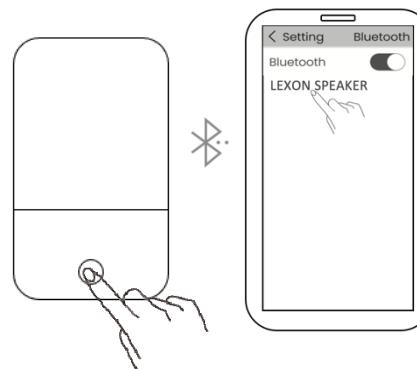
**PAIRING INSTRUCTIONS**

**Earbuds - Bluetooth pairing**



1. Open the charging case and take out both earbuds. The blue LED on either earbud will start flashing to indicate it is in pairing mode.
2. Then go to Bluetooth® settings of your mobile device and choose LEXON BUDS.

**Speaker - Bluetooth pairing**



1. Press and hold the button for 3 seconds to power on the charging case.
2. Then go to Bluetooth® settings of your mobile device and choose LEXON SPEAKER.

**LED information**

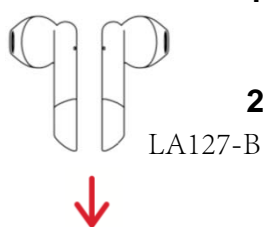
	Status	LED status
Speaker	Ready to pair	Blue LED flashes quickly
	Connected / Pause	Solid blue LED
	Playing music	Blue LED flashes slowly
	Lowbattery	Red LED flashes slowly

	Status	LED status
Earbuds	Ready to pair	Red & blue LED flash quickly
	Connected	LED Off
	Playing music	LED Off
	Lowbattery	Red LED flashes slowly

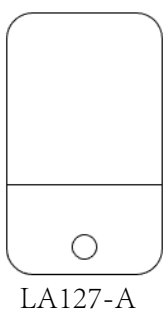
**Good to know**

- You can independently use your left or right earbud by storing the one you don't want to use back in the charging case.
- Bluetooth® pairing mode will automatically stop after 10 minutes of searching for device.
- To resume the pairing mode, please put both earbuds back in the charging case for a few seconds then take them out again.

**CHARGE THE EARBUDS**

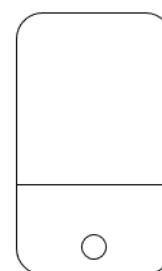


1. To charge the earbuds, place them into the charging case to initiate automatic charging.
2. It will take about 1h30 to fully charge your earbuds in the charging case.



The earbuds can deliver about 5 hours of battery life.  
When reaching low battery level, you will hear an audio indication in your earbuds inviting you to put them back in the charging case to recharge them.

**CHARGE THE CHARGING CASE**



1. To charge the charging case (Speaker), plug the supplied USB Type-C cable into the charging port of Speakerbuds.
2. Plug the USB end of the cable into any 5V-1A power adapter.
3. Plug the power adapter to a power source.



The charging case offers a further 20 hours of battery life than the five hours you get from the earbuds alone  
The speaker only can deliver about 5 hours of battery life.

**LED information**

There are 4 LED indicators in the charging case to indicate its battery level.  
 When the charging case is powered, the light indicator next to the charging port turns red.  
 When the charging case is fully charged, the light indicator next to the charging port turns off.

	Power Level	LED1	LED2	LED3	LED4
<b>Input charging</b>	0 – 25%	Flashing	Off	Off	Off
	25 – 50%	On	Flashing	Off	Off
	50 – 75%	On	On	Flashing	Off
	75 – 96%	On	On	On	Flashing
	Fully charged	On	On	On	On

Simply insert the earbuds into the charging case to check the battery level.

	Power Level	LED1	LED2	LED3	LED 4
<b>Battery status</b>	0	Off	Off	Off	Off
	25%	On	Off	Off	Off
	50%	On	On	Off	Off
	75%	On	On	On	Off
	100%	On	On	On	On

**OPERATIONS**  
**Earbuds**



<b>Play / Pause</b>	<b>x2</b>	
<b>Next track</b>		<b>x2</b>
<b>Voice control</b>	<b>x3*</b>	<b>x3*</b>
<b>Answer call</b>	<b>x2*</b>	<b>x2*</b>
<b>Hang up call</b>	<b>x2*</b>	<b>x2*</b>
<b>Reject call</b>	<b>Press and hold for 3 seconds*</b>	<b>Press and hold for 3 seconds*</b>


\*Use either earbud to conduct these operations

**Speaker**

**Turn On/Off the speaker:** Press and hold the button for 3 seconds  
**Play/Pause the speaker:** Press the button once

**SAFETY PRECAUTIONS**

Read all the instructions before using the device:

- To prevent possible hearing damage, do not listen at high volume levels for long periods of time. 
- Use of earbuds will prevent your ability to hear other sounds.
- Use your earbuds with caution when engaging in any activity that requires your full attention.
- This package contains small parts that may be hazardous to children and should be kept out of reach from children. This product is not a toy never allow children to play with this product.
- Use of a power supply or charger that is not recommended may result in a risk of fire or injury.
- Never try to dismantle the product yourself, or push objects of any kind into the products, as this may cause short circuits, which could result in a fire or electric shock.
- None of the components can be replaced or repaired by users. Please contact customer service for any assistance.
- Avoid exposing your product to rain, moisture or other liquids to protect against damage to the product or injury to you.
- Leaving the product in hot or cold places, such as in a closed car in the summer and winter conditions, will reduce the capacity and lifetime of the earbuds.
- Read all the instructions before using the charging case.
- Do NOT submerge the earbuds in water.
- Do NOT expose the earbuds to moving water (e.g., from a faucet, etc.).
- Do NOT wear the earbuds while showering or bathing, or when participating in water sports, e.g., swimming, waterskiing, surfing, etc.
- Do NOT expose charging case to water, rain, liquids or snow.
- Do NOT use the charging case in excess of its output range.

**Risk of explosion if Battery is replaced by an incorrect type. Dispose of used batteries according to the instruction.**

#### CE DIRECTIVE

LEXON hereby declares that the device is in compliance with the essential requirements and other relevant provisions of Directives 2014/53/EU & 2011/65/EU.

The original EU declaration of conformity may be found at <https://www.lexon-design.com/assets/certifications-ce-speakerbuds.pdf>

LEXON declare que cet appareil est conforme aux exigences essentielles et aux autres dispositions pertinentes de la directive Directives 2014/53/EU & 2011/65/EU.

La déclaration de conformité originale de l'UE peut être consultée à l'adresse suivante: <https://www.lexon-design.com/assets/certifications-ce-speakerbuds.pdf>

#### UK CONFORMITY ASSESSMENT

The object described above is in conformity with the relevant Union harmonisation legislation.

The original UK declaration of conformity may be found at: <https://www.lexon-design.com/assets/certifications-ukca-speakerbuds.pdf>

#### DISPOSAL AND RECYCLING INFORMATION

After the implementation of the European Directive 2012/19/EU in the national legal system, the following applies : electrical and electronic devices may not be disposed of with domestic waste. Consumers are obliged by law to return electrical and electronic device at the end of their service lives to the public collecting points set up for this purpose or point of sale. Details to this are defined by the national law of the respective country. This symbol on the product, the instruction manual or the package indicates that a product is subject to these regulations. By recycling, reusing the materials or other forms of utilizing old devices, you are making an important contribution to protecting our environment.

#### USA - FCC STATEMENT

This device complies with part 15 of the FCC Rules.

Operation is subject to the following two conditions:

- (1) This device may not cause harmful interference, and
- (2) this device must accept any interference received, including interference that may cause undesired operation.

Notice:

Any changes or modifications not expressly approved by the party responsible for compliance could void your authority to operate the equipment.

NOTE: This equipment has been tested and found to comply with the limits for a Class B digital device, pursuant to part 15 of the FCC Rules. These limits are designed to provide reasonable protection against harmful interference in a residential installation.

This equipment generates, uses and can radiate radio frequency energy and, if not installed and used in accordance with the instructions, may cause harmful interference to radio communications. However, there is no guarantee that interference will not occur in a particular installation. If this equipment does cause harmful interference to radio or television reception, which can be determined by turning the equipment off and on, the user is encouraged to try to correct the interference by one or more of the following measures:

- Reorient or relocate the receiving antenna.
- Increase the separation between the equipment and receiver.
- Connect the equipment into an outlet on a circuit different from that to which the receiver is connected.
- Consult the dealer or an experienced radio/ TV technician for help.

#### RF exposure statements

This equipment complies with FCC radiation exposure requirement set forth for an uncontrolled environment. End users must follow the specific operating instructions for satisfying RF exposure compliance.

#### Canadian Compliance Statement

This device complies with Industry Canada license-exempt RSSs. Operation is subject to the following two conditions:

- 1) This device may not cause interference, and
- 2) This device must accept any interference, including interference that may cause undesired operation of the device.

This Class B digital apparatus complies with Canadian ICES-003.

Le présent appareil est conforme aux CNR d'Industrie Canada applicables aux appareils radio exempts de licence.

L'exploitation est autorisée aux deux conditions suivantes:

- (1) l'appareil ne doit pas produire de brouillage, et
- (2) l'utilisateur de l'appareil doit accepter tout brouillage radioélectrique subi, même si le brouillage est susceptible d'en compromettre le fonctionnement.

#### RF exposure statements

This device complies with the ISED RSS-102 RF exposure requirement set forth for an uncontrolled environment and are safe for intended operation as described in this manual.

Cet appareil est conforme aux exigences d'exposition RF de l'ISED RSS-102 définies pour un environnement non contrôlé et est sûr pour le fonctionnement prévu comme décrit dans ce manuel.

## PRODUCT SPECIFICATIONS

### Charging case/Speaker

Material: ABS / PU leather  
Dimensions: 9.9 x 5.2 x 2.5 cm / 3.9 x 2 x 1"  
Weight: 76 g / 0.16 lbs  
Operating temperature: 0-35°  
Bluetooth version: 5.0  
Bluetooth range: 10m  
Bluetooth profiles: HSP, HFP, A2DP,AVRCP  
Frequency range: 80Hz - 20kHz  
Signal & noise ratio: ≤ 85 dB  
Rated power: 3W  
Impedance: 4Ω  
Battery capacity: Li-polymer 400 mAh  
Battery voltage: 3.7V  
Charging time: 2h  
Battery life: 5h of playtime for speaker only / *offers a further 20 hours of battery life for earbuds alone*  
Input: 5V-1A  
Max. output power: 4dB  
Connection type: USB Type-C (cable included)  
Operation frequency:2402-2480MHz  
Transmitter power: -1.63 dBm

### Earbuds

Material: ABS  
Dimensions: 4.1 x 1.8.7 x 1.7 cm /  
Weight: 4 g (each) / 0.01 lbs  
Sound: Environmental noise cancellation with dedicated mic  
Operating temperature: 0-35°C  
Bluetooth version: 5.0  
Bluetooth range: 10m  
Bluetooth profiles: HSP,HFP, A2DP,AVRCP  
Frequency range: 20Hz - 20kHz  
Signal & noise ratio: ≤ 95 dB  
Earbud impedance: 32Ω  
Battery capacity: Li-polymer 40 mAh  
Battery voltage: 3.7V  
Charging time: 1h30  
Battery life: 4h of playtime

Compatibility: with iOS and Android devices  
International warranty: 1 year

“