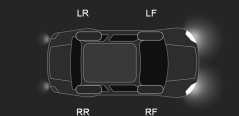


Components



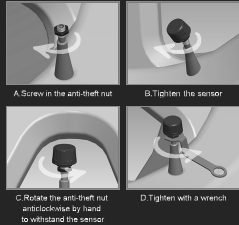
Installation And Use Brief



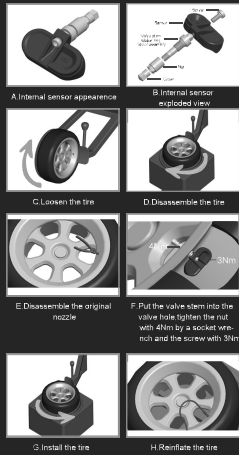
When the product leaves the factory, the sensors with ID codes of 4 tires have been configured (each sensor has an independent ID code). Just connect the sensor to the APP first, then install the sensor on the tire in the corresponding position, then you can use it.

Sensor Installation

External Sensor Installation



Internal Sensor Installation

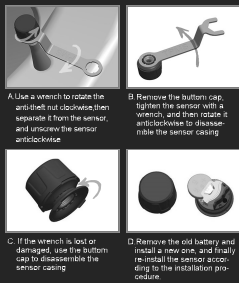


Tips: Please keep the sensor-specific installation tools in case you need to disassemble and install the sensor.

Replace The Battery

Suggestion: When replacing the battery, please disassemble the casing one by one, do not tire or disassemble at the same time, avoid the sensor being misplaced and installed on other tires.

When the receiver gives a voice prompt and the icon flashes warning on the display, please replace the sensor battery on the corresponding tire (lithium battery CR1632, working temperature requirement: -40 C-80 C), the user can purchase from the dealer.



Tips: When installing the cover, pay attention to check whether the waterproof ring is in place. If it is damaged, please replace it with a new waterproof ring and then install the casing.

FCC INFORMATION
This device complies with Part 15 of the FCC Rules. Operation is subject to the following two conditions:
1) This device may not cause harmful interference, and 2) This device must accept any interference received, including interference that may cause undesired operation.
Note: This equipment has been tested and found to comply with the limits for a Class B digital device, pursuant to part 15 of the FCC Rules. These limits are designed to provide reasonable protection against harmful interference in a residential installation. This equipment generates, uses and can radiate radio frequency energy and, if not installed and used in accordance with the instructions, may cause harmful interference to radio communications. However, there is no guarantee that interference will not occur in a particular installation. If this equipment does cause harmful interference to radio or television reception, which can be determined by turning the equipment off and on, the user is encouraged to try to correct the interference by one or more of the following measures:
—Reorient or relocate the receiving antenna.
—Increase the separation between the equipment and receiver.
—Connect the equipment into an outlet on a circuit different from that to which the receiver is connected.
—Consult the dealer or an experienced radio/TV technician for help.
Caution: Any changes or modifications not expressly approved by the party responsible for compliance could void the user's authority to operate this equipment.
FCC Radiation Exposure Statement
This equipment complies with FCC RF radiation exposure limits set forth for an uncontrolled environment. The equipment should be installed and operated with a minimum distance of 20 centimeters between the radiator and your body.