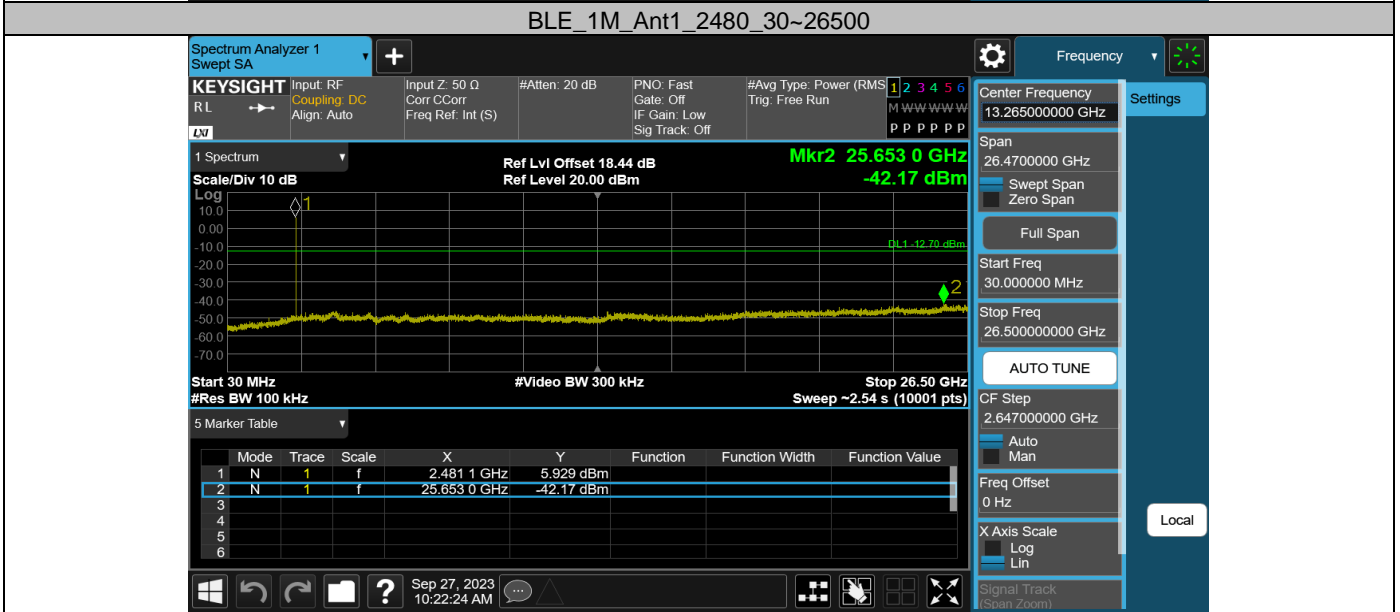
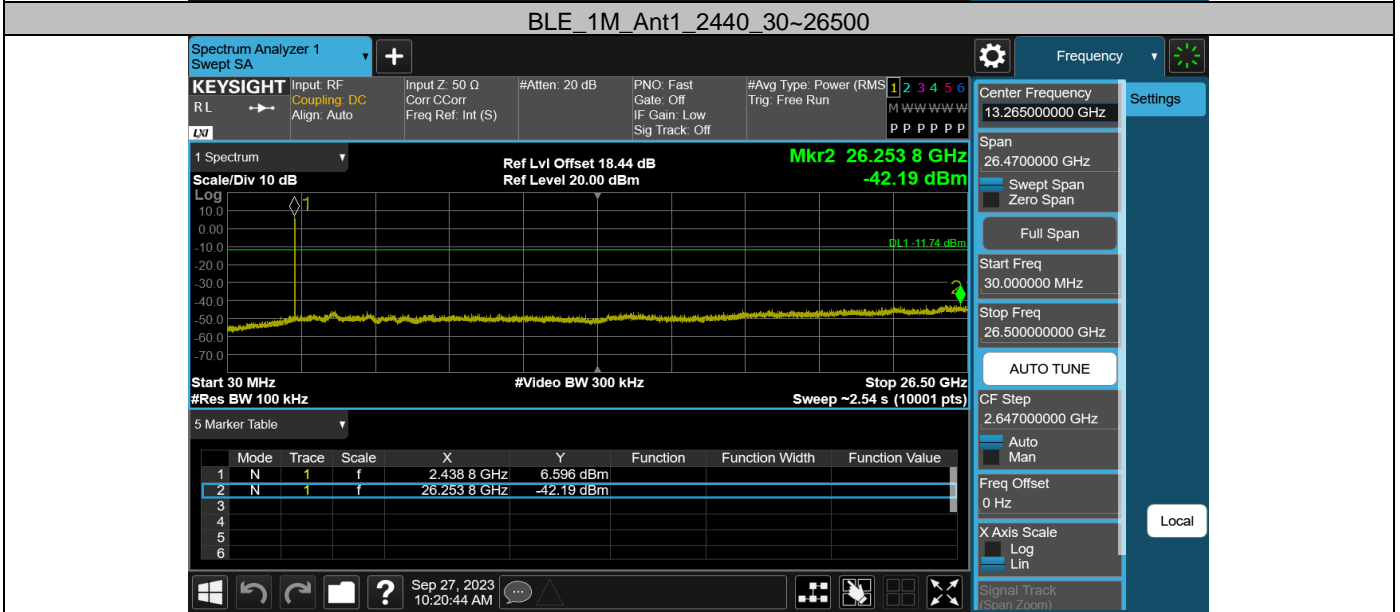
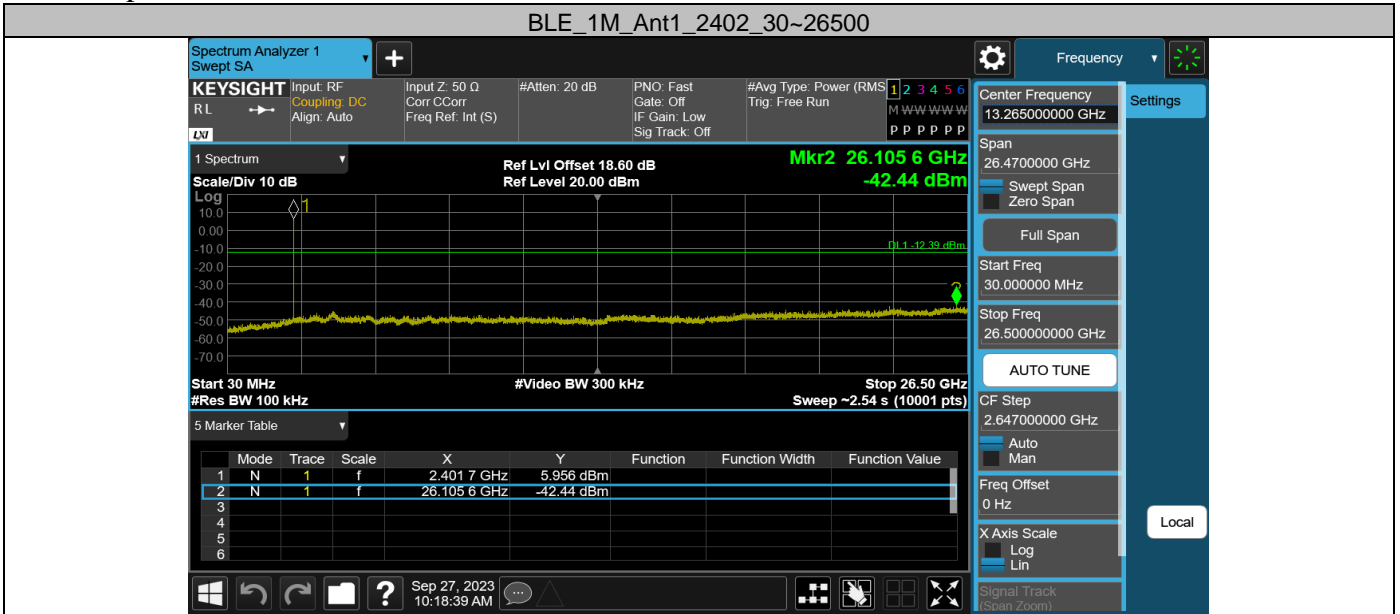
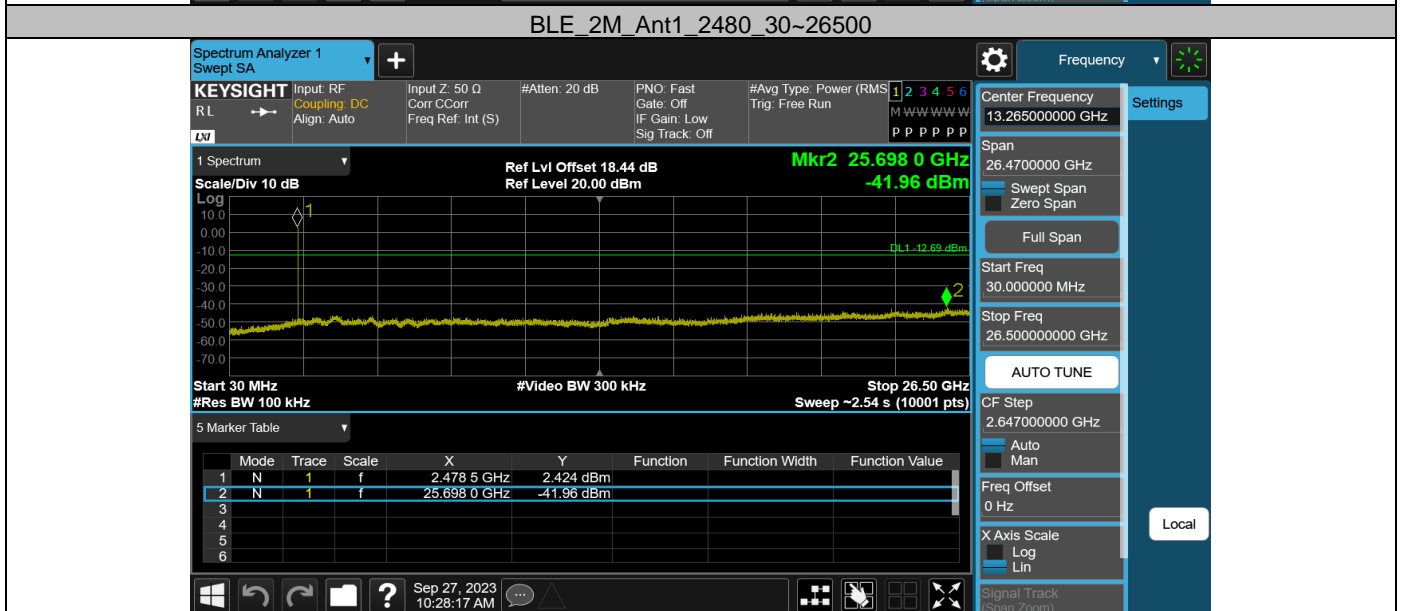
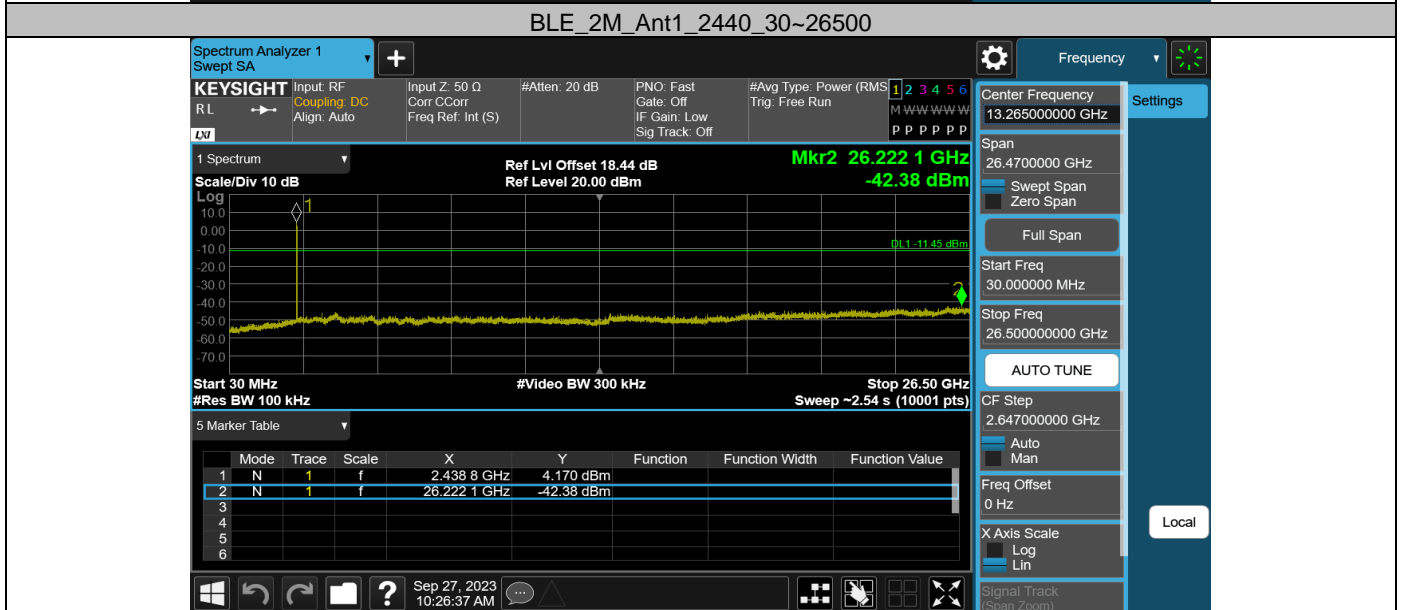
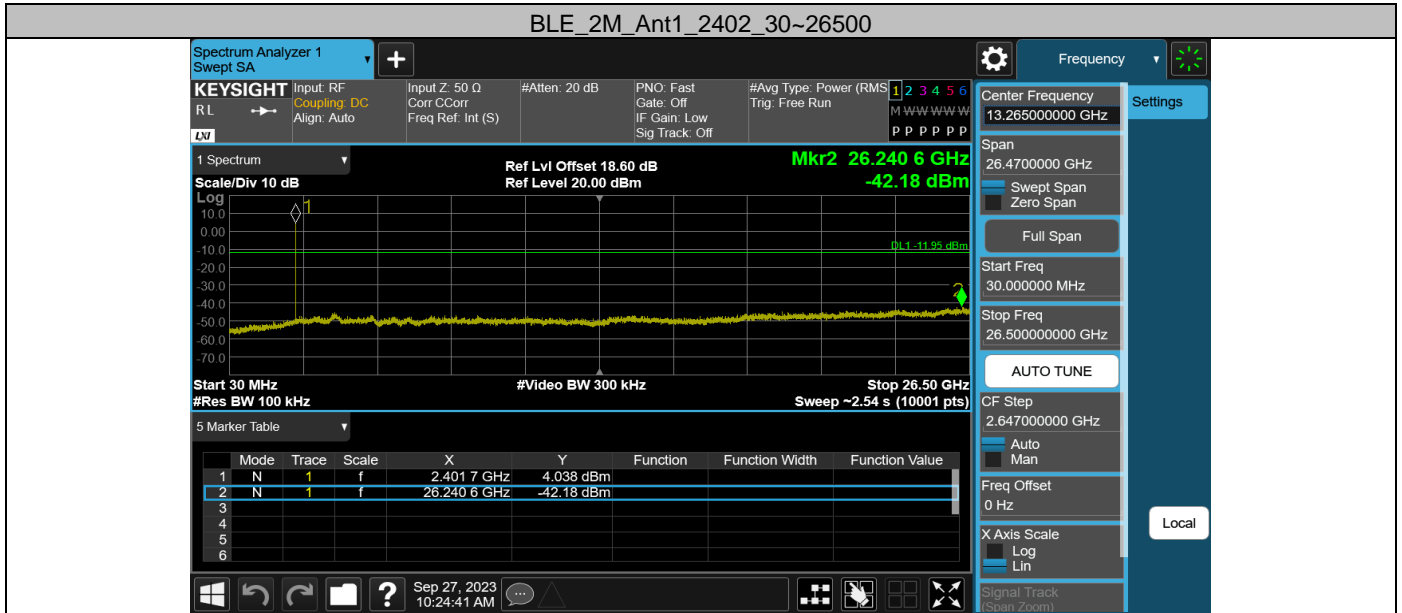


Appendix G: Conducted Spurious Emission
Test Result

Test Mode	Antenna	Frequency[MHz]	Freq Range [MHz]	Ref Level [dBm]	Result [dBm]	Limit[dBm]	Verdict
BLE_1M	Ant1	2402	30~26500	7.61	-42.44	≤-12.39	PASS
		2440	30~26500	8.26	-42.19	≤-11.74	PASS
		2480	30~26500	7.30	-42.17	≤-12.7	PASS
BLE_2M	Ant1	2402	30~26500	8.05	-42.18	≤-11.95	PASS
		2440	30~26500	8.55	-42.38	≤-11.45	PASS
		2480	30~26500	7.31	-41.96	≤-12.69	PASS

Test Graphs





12. TEST SETUP PHOTO

Conducted Test



Radiated Test (Below 1GHz)

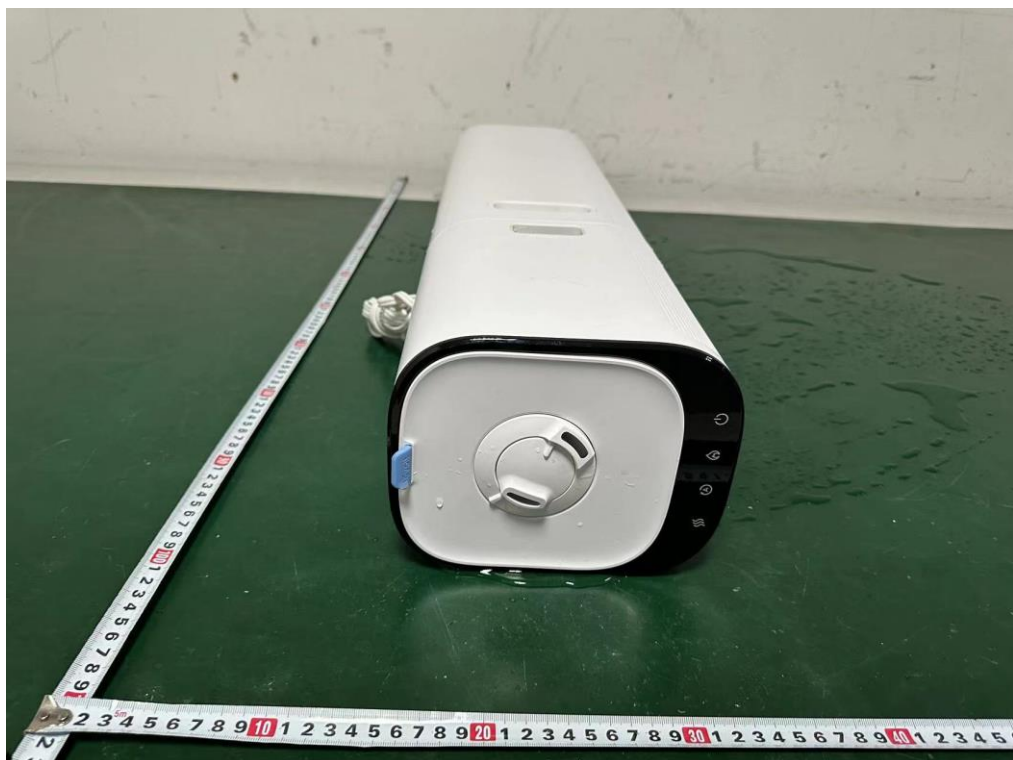


Radiated Test (Above 1GHz)



13. EUT PHOTO

External Photos
M/N: LUH-M102S-WUS



External Photos
M/N: LUH-M102S-WUS



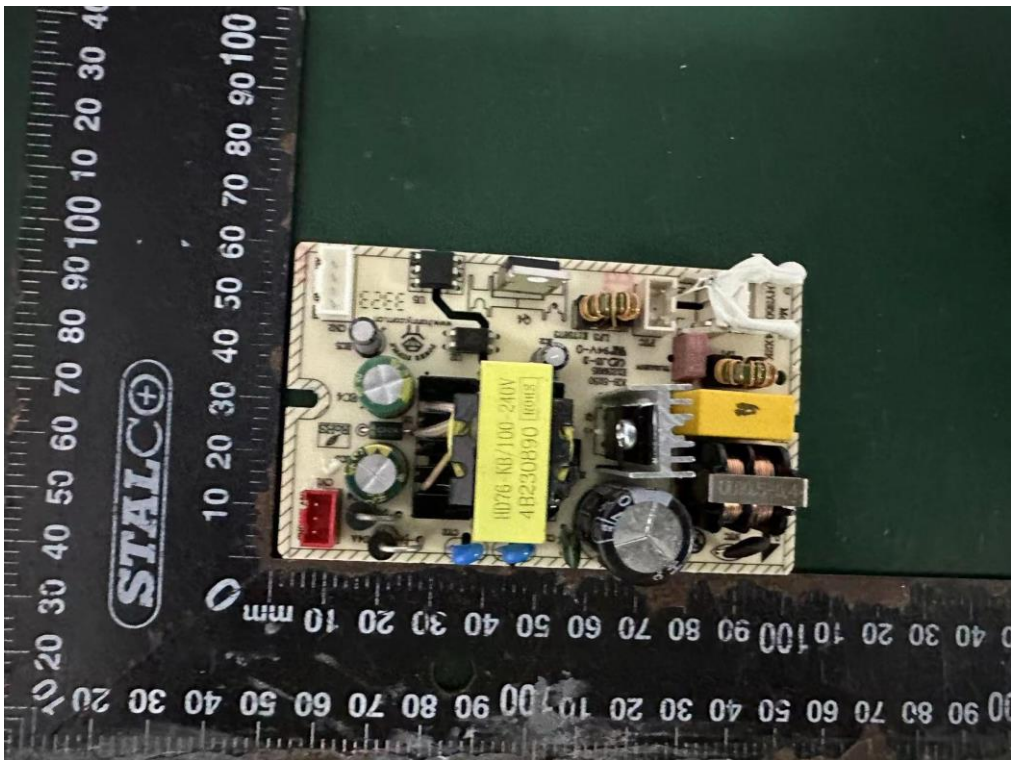
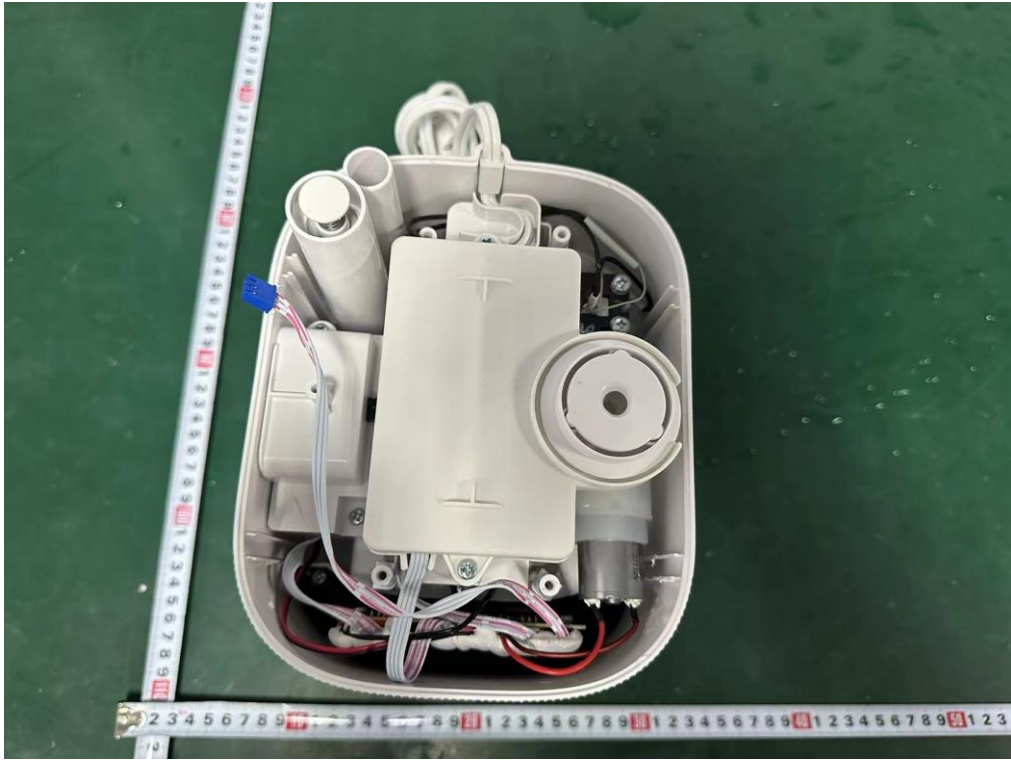
External Photos
M/N: LUH-M102S-WUS



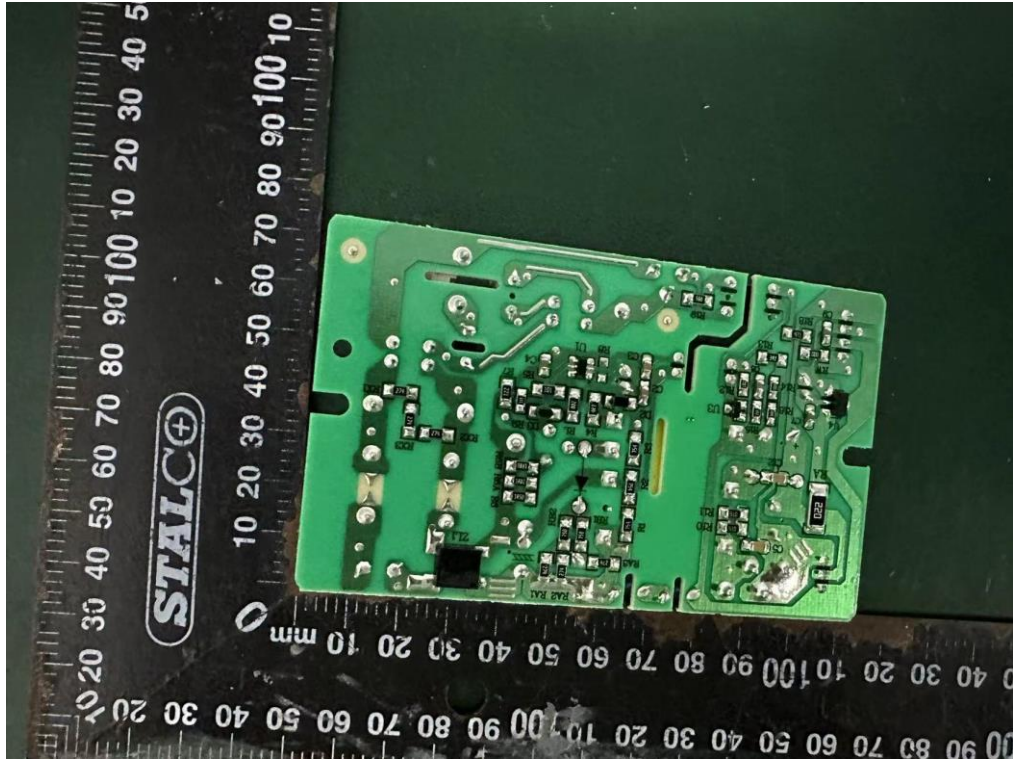
External Photos
M/N: LUH-M102S-WUS



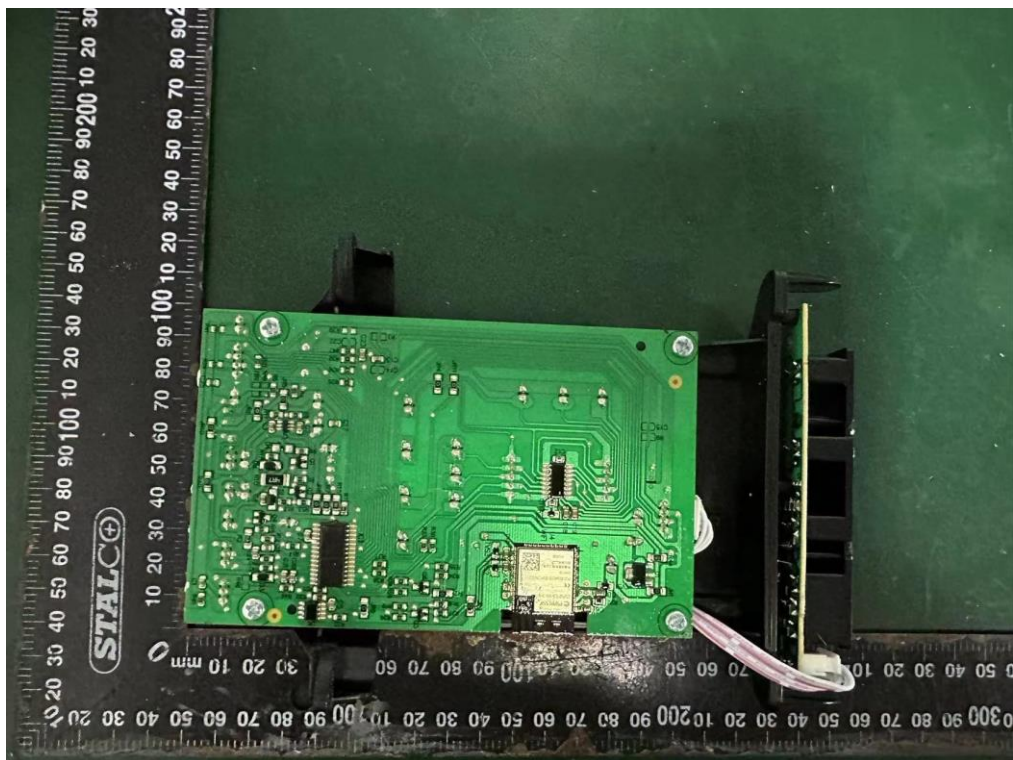
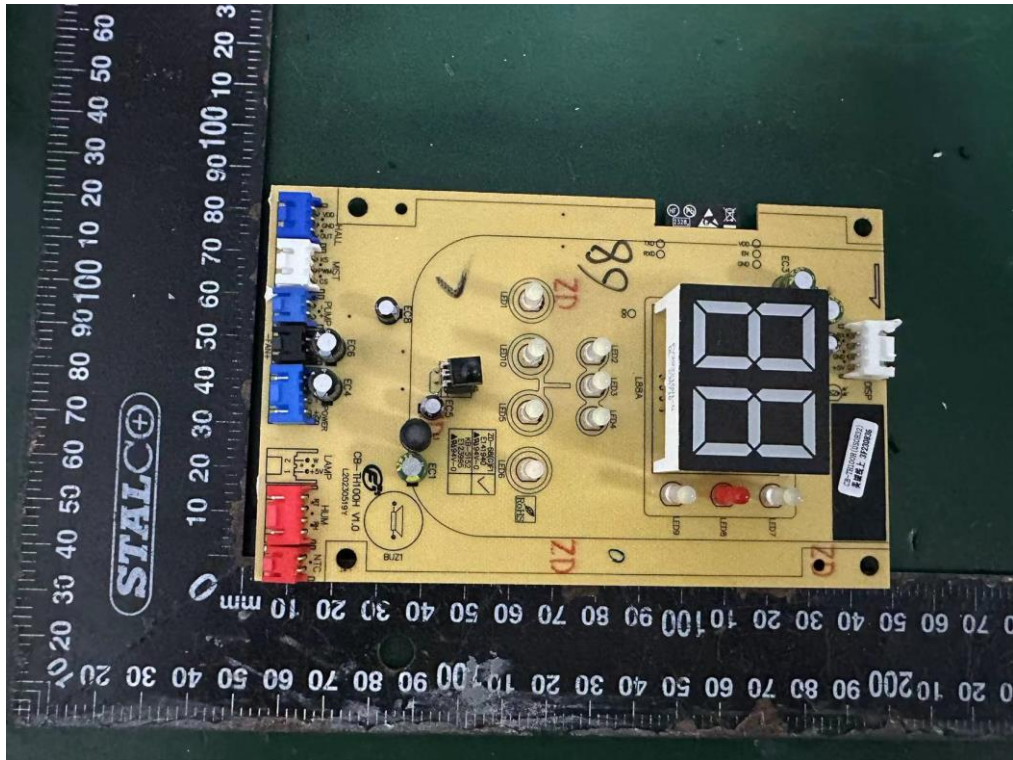
Internal Photos
M/N: LUH-M102S-WUS



Internal Photos
M/N: LUH-M102S-WUS

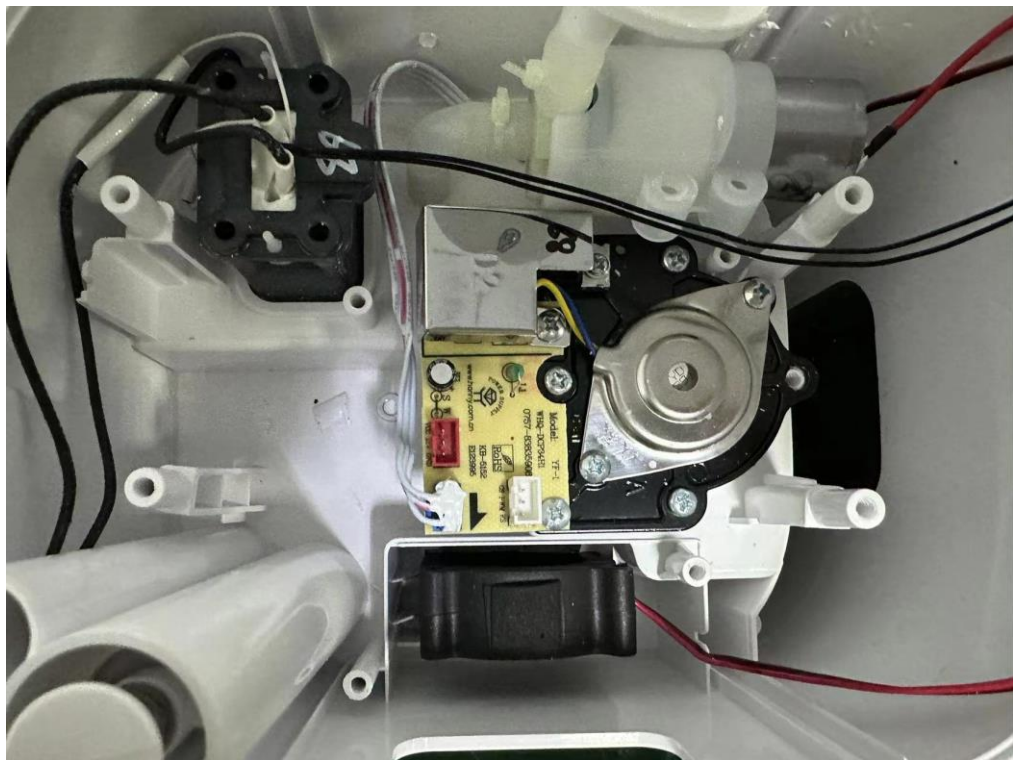
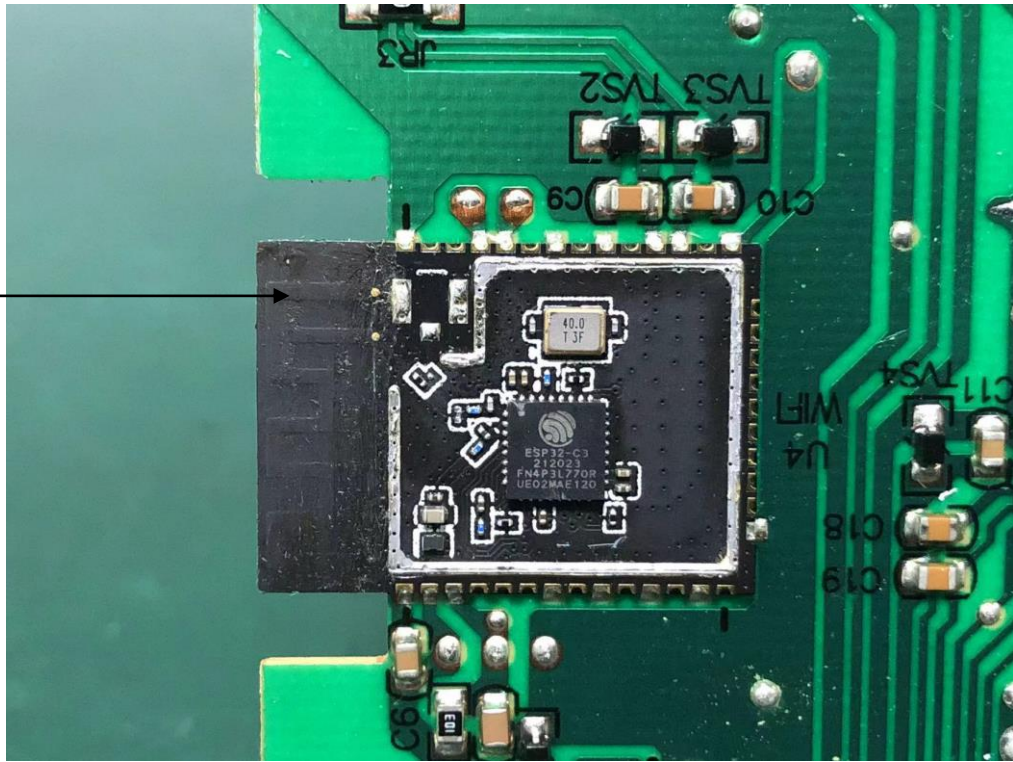


Internal Photos
M/N: LUH-M102S-WUS

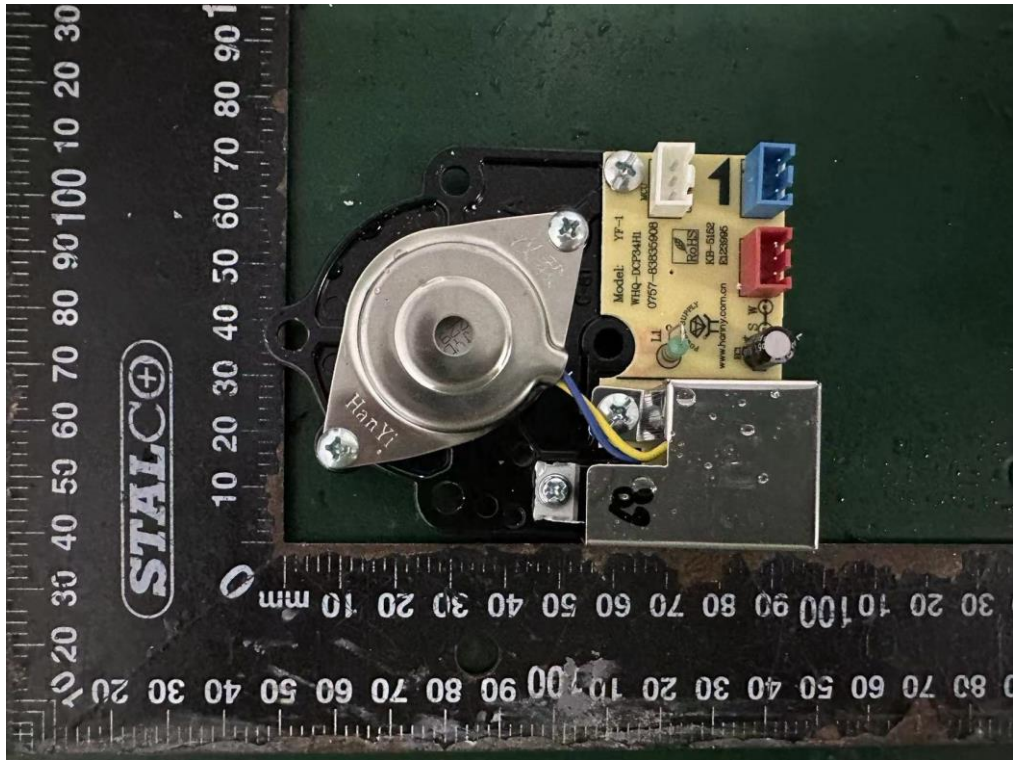


Internal Photos
M/N: LUH-M102S-WUS

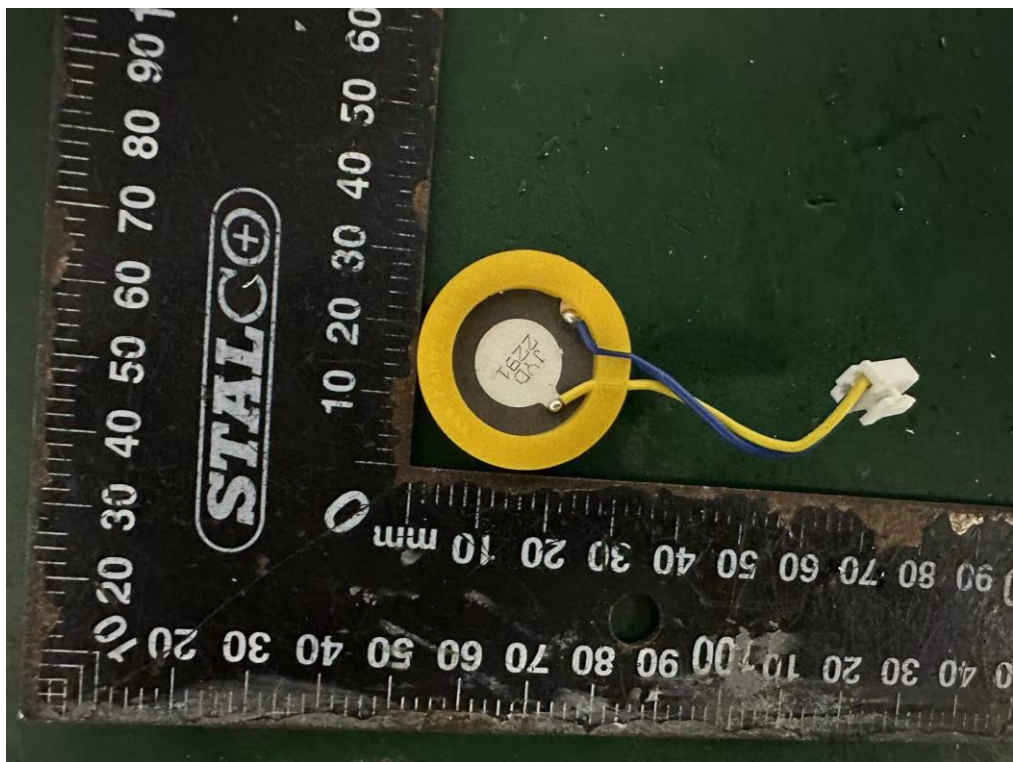
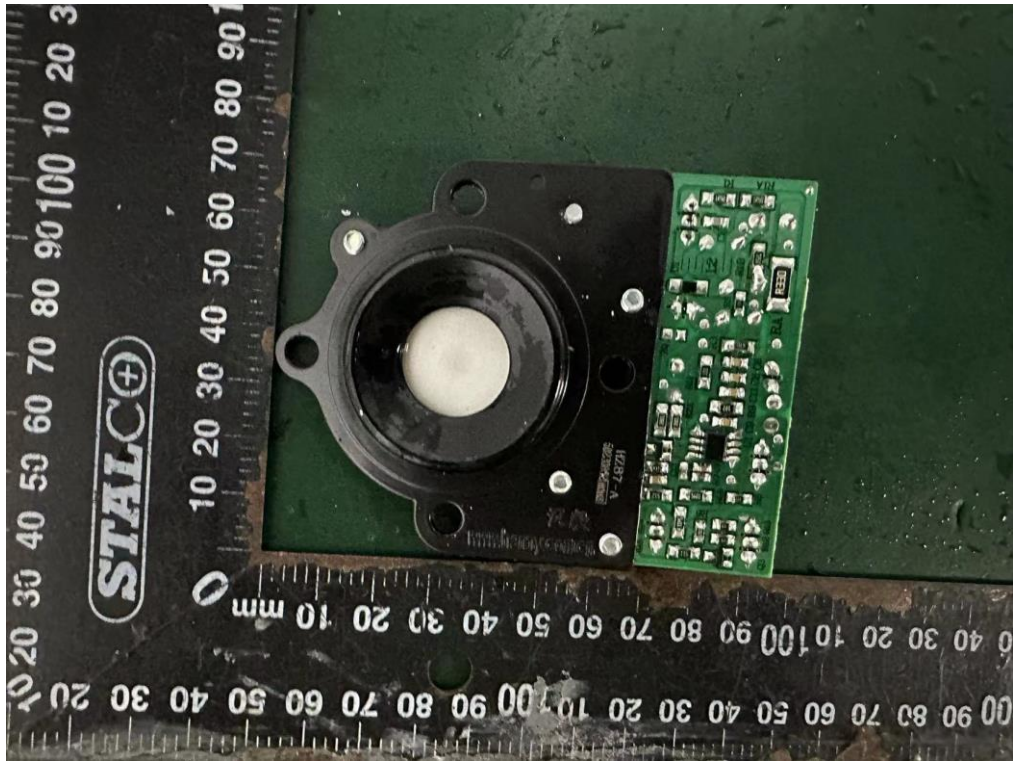
Antenna



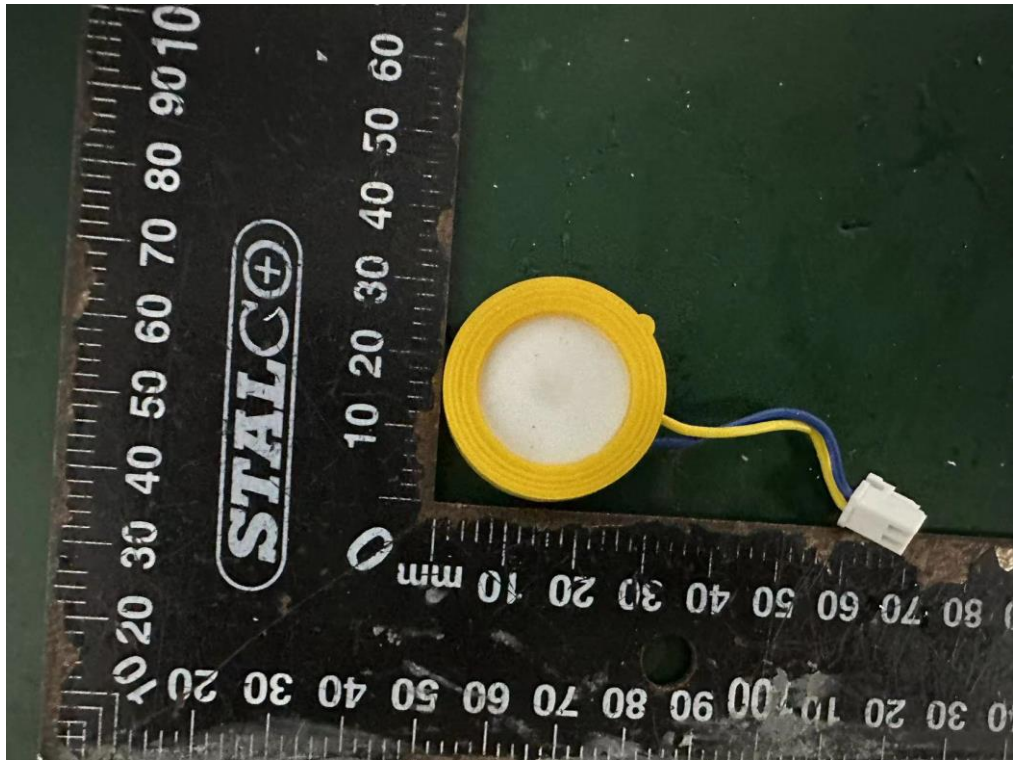
Internal Photos
M/N: LUH-M102S-WUS



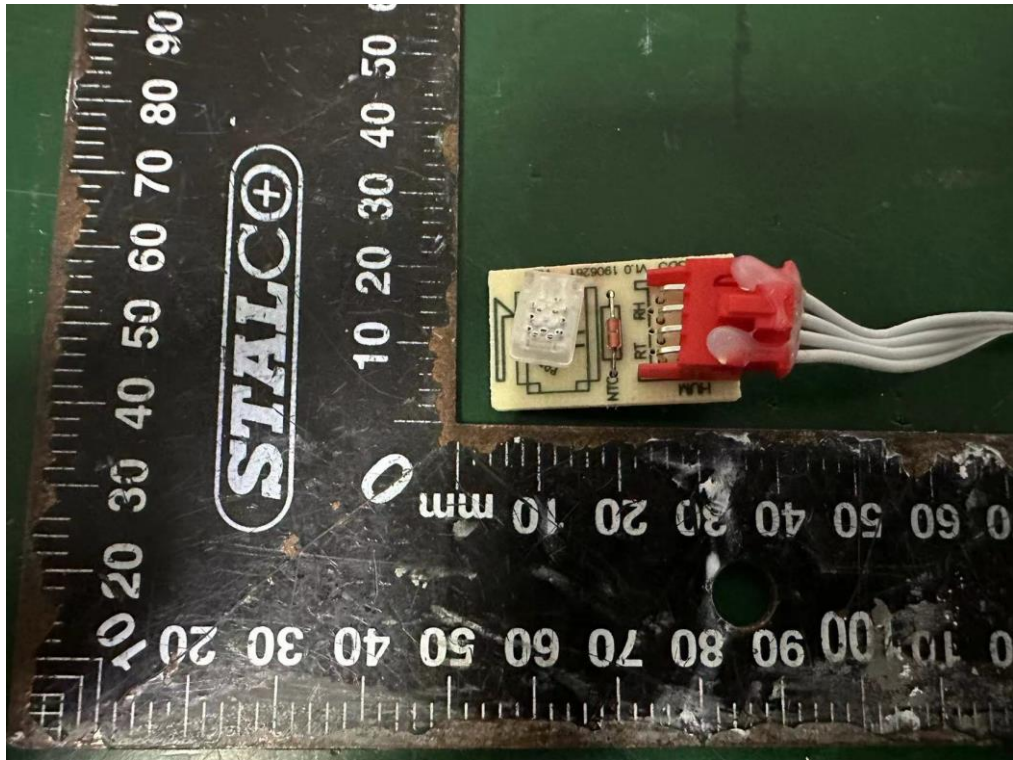
Internal Photos
M/N: LUH-M102S-WUS



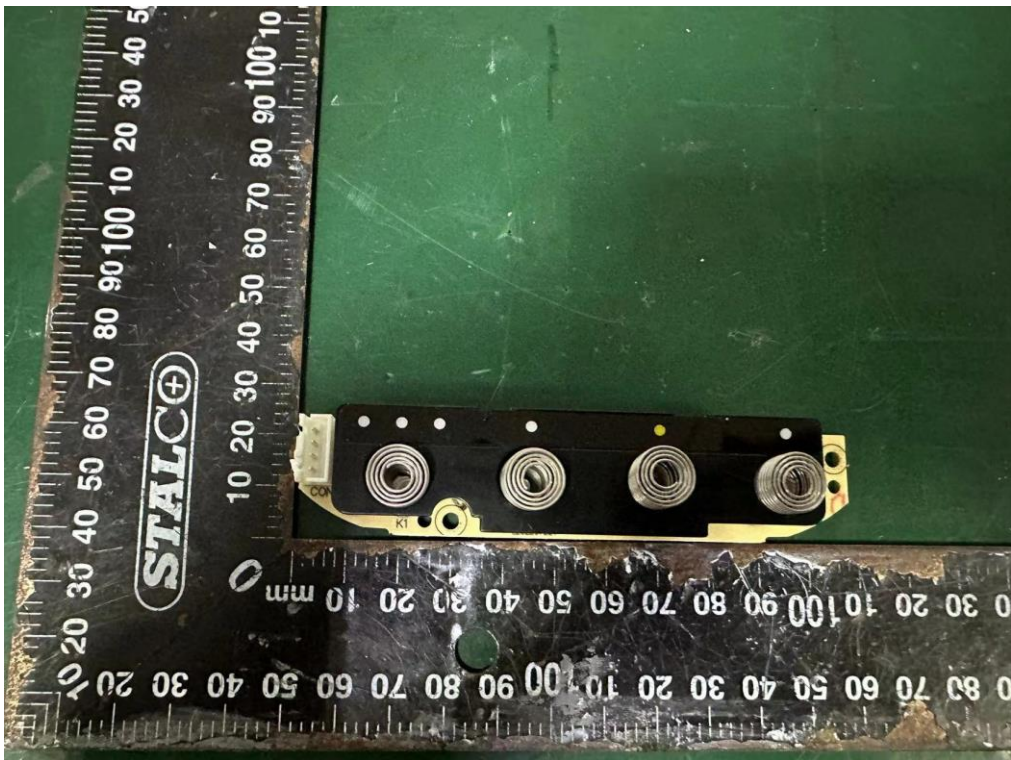
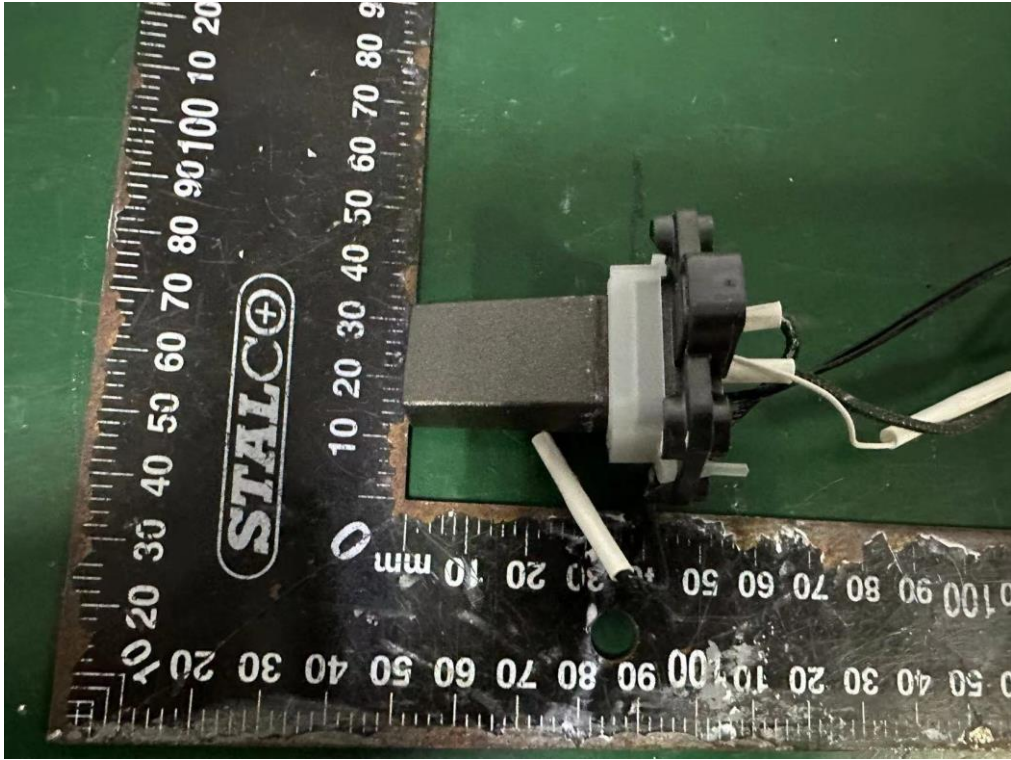
Internal Photos
M/N: LUH-M102S-WUS



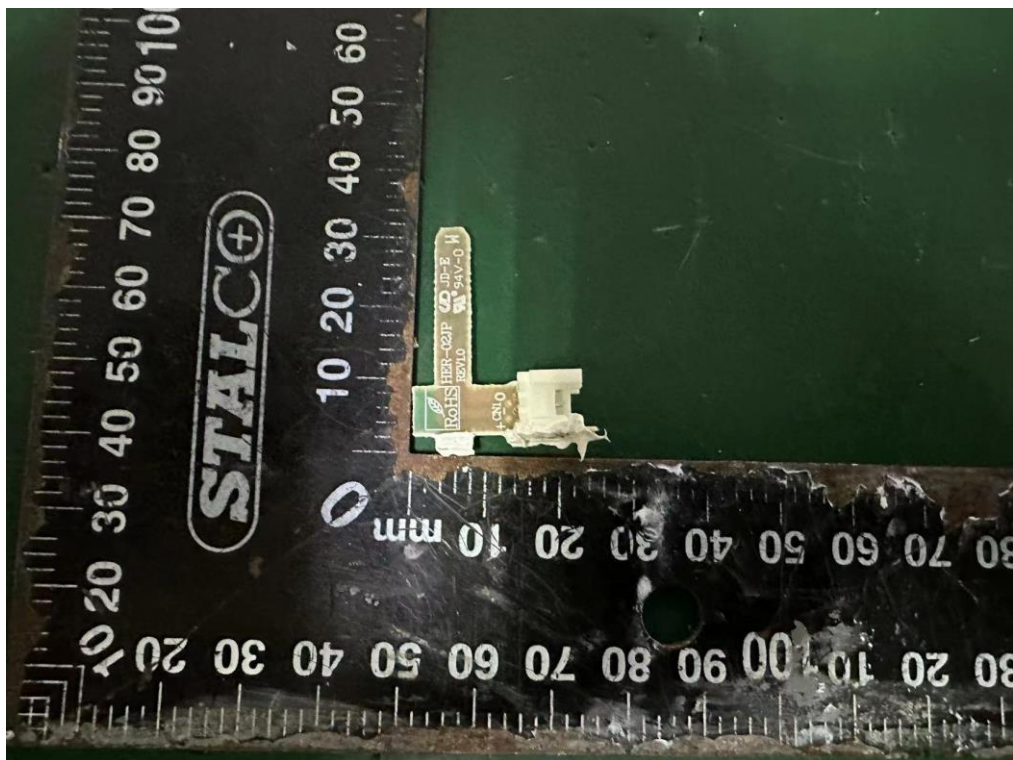
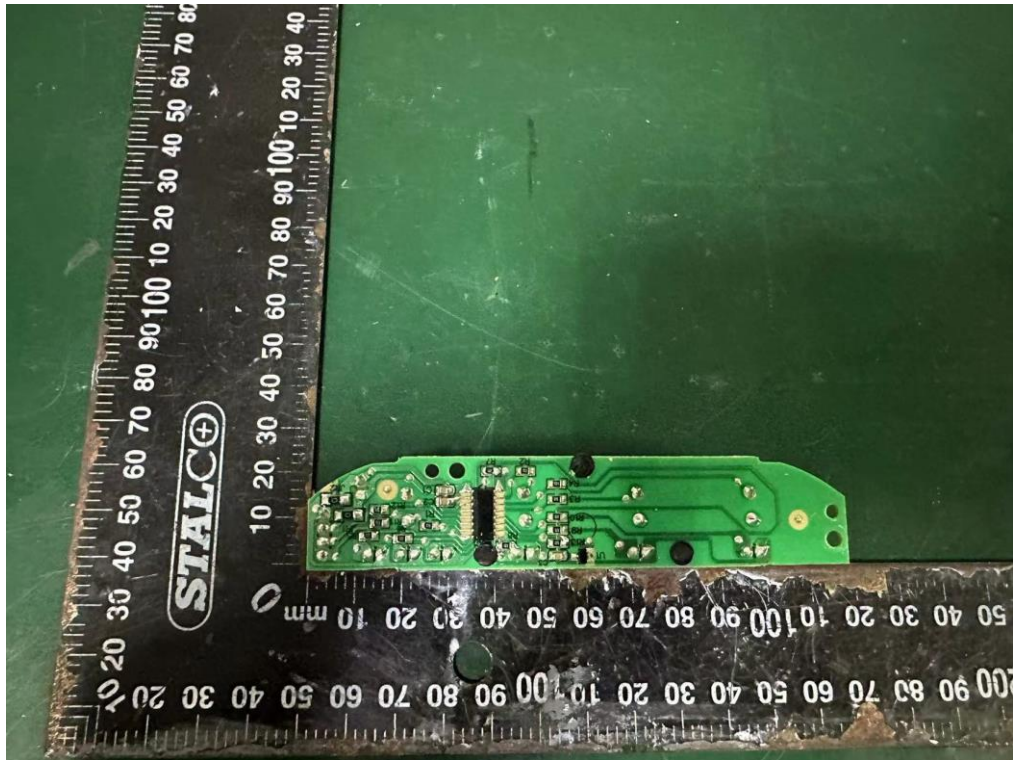
Internal Photos
M/N: LUH-M102S-WUS



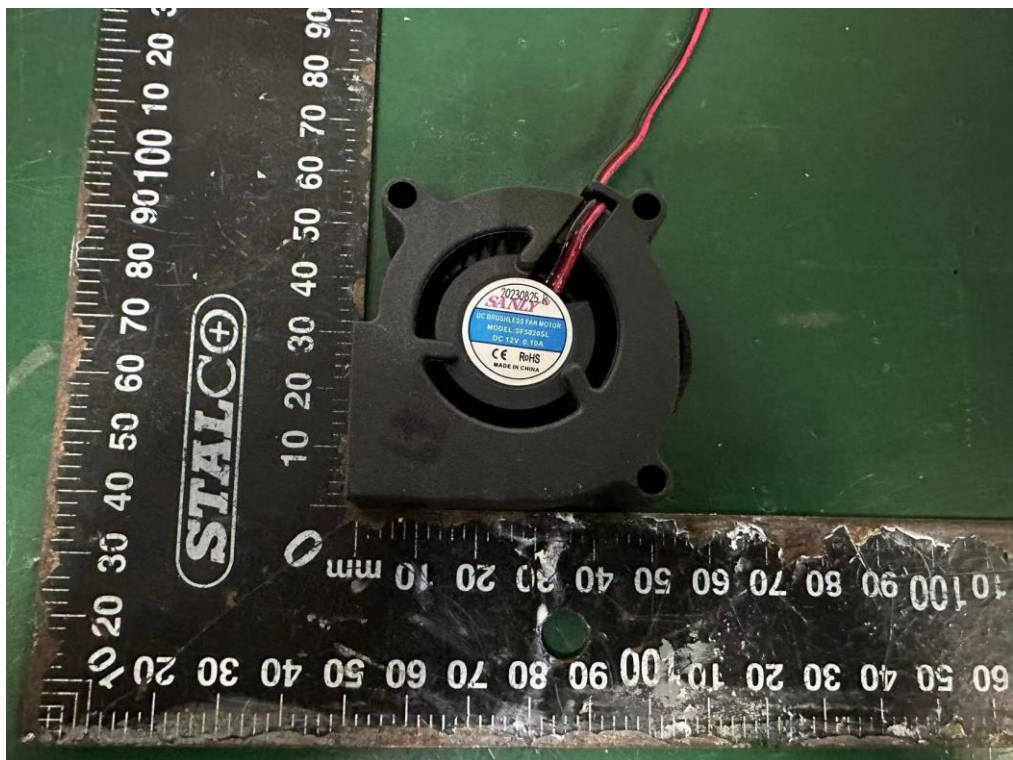
Internal Photos
M/N: LUH-M102S-WUS



Internal Photos
M/N: LUH-M102S-WUS



Internal Photos
M/N: LUH-M102S-WUS



End of Test Report