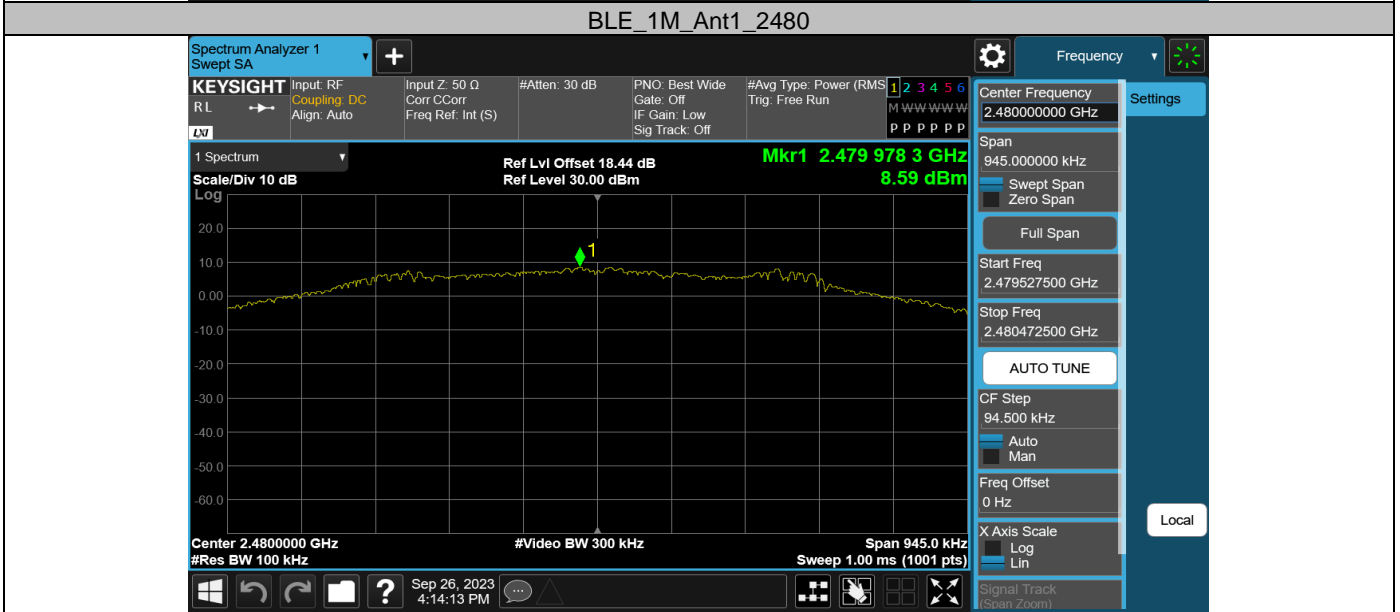
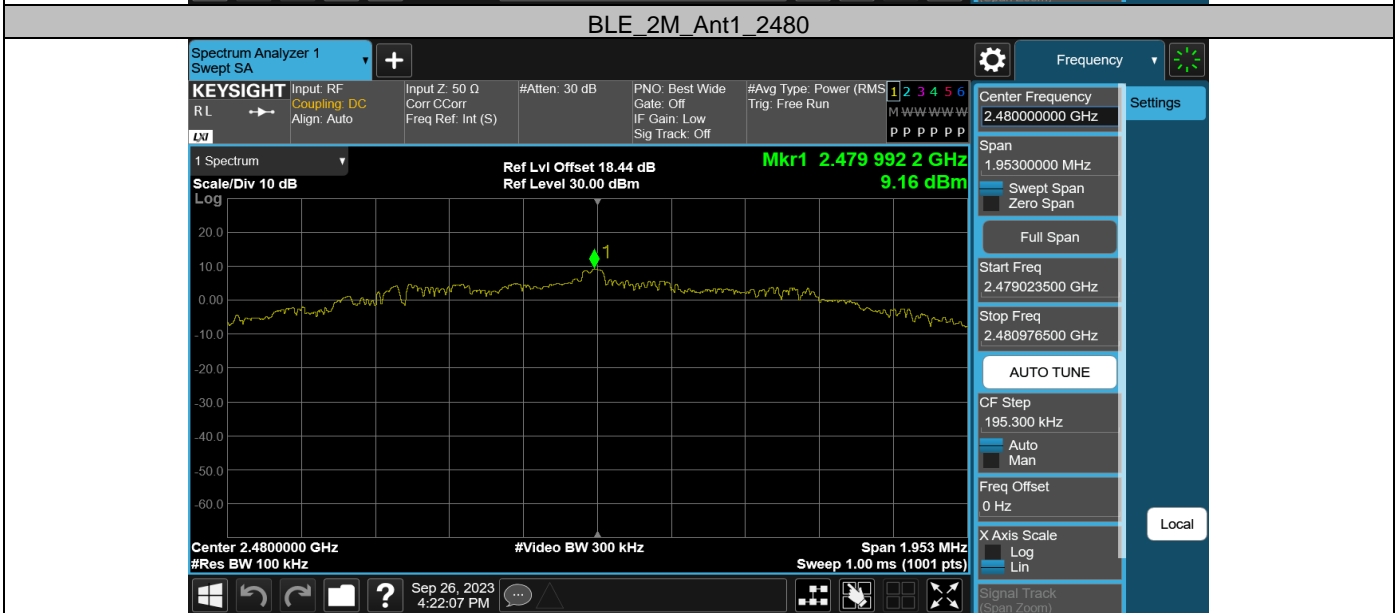


### Appendix E: Reference level measurement Test Result

Test Mode	Antenna	Freq(MHz)	Max.Point[MHz]	Result[dBm]
BLE_1M	Ant1	2402	2402.00	10.72
		2440	2439.97	10.68
		2480	2479.98	8.59
BLE_2M	Ant1	2402	2402.06	8.45
		2440	2440.01	10.84
		2480	2479.99	9.16

Test Graphs

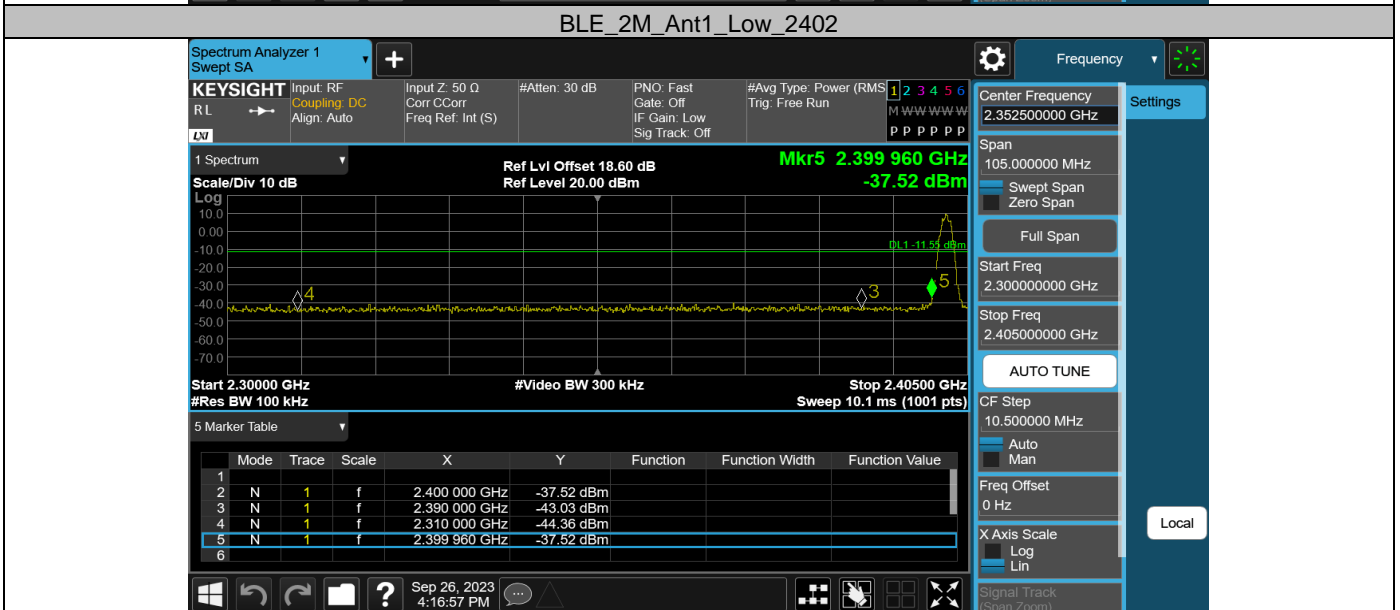
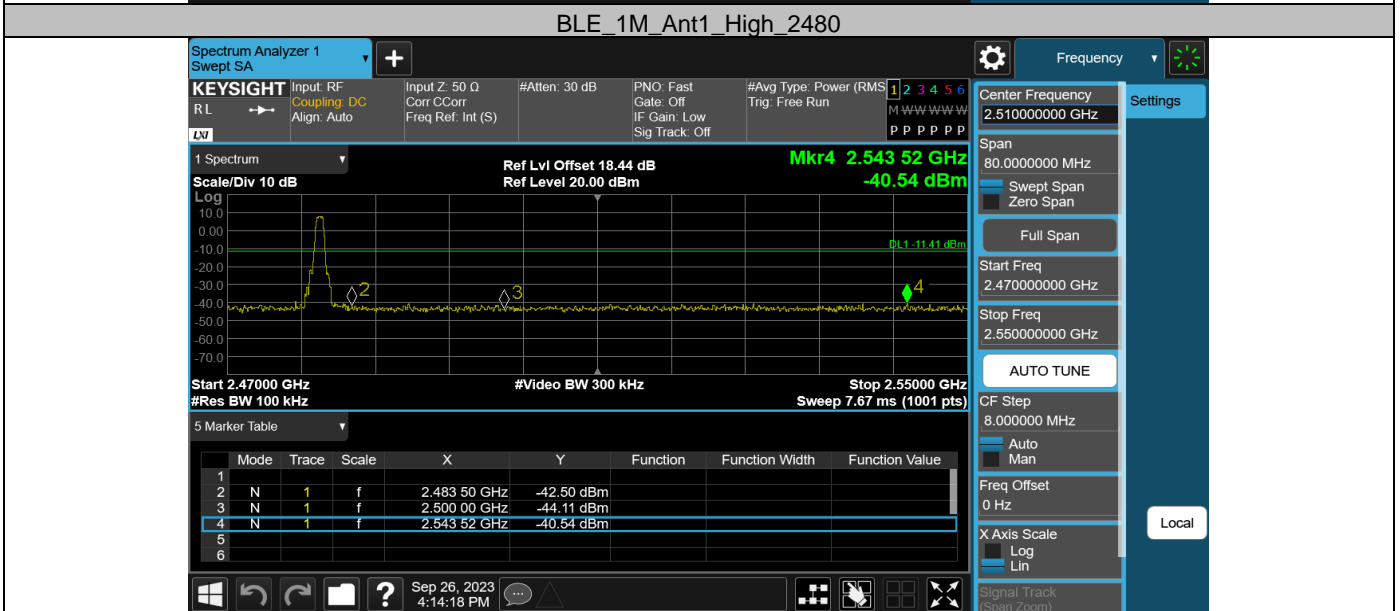
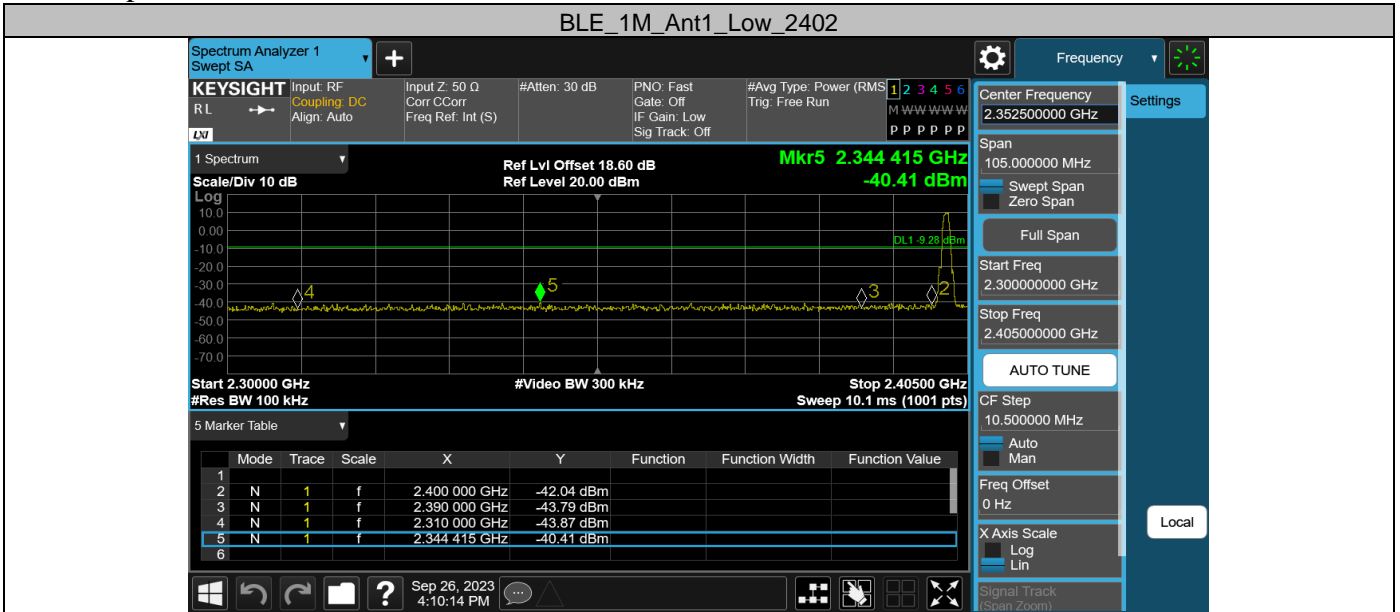


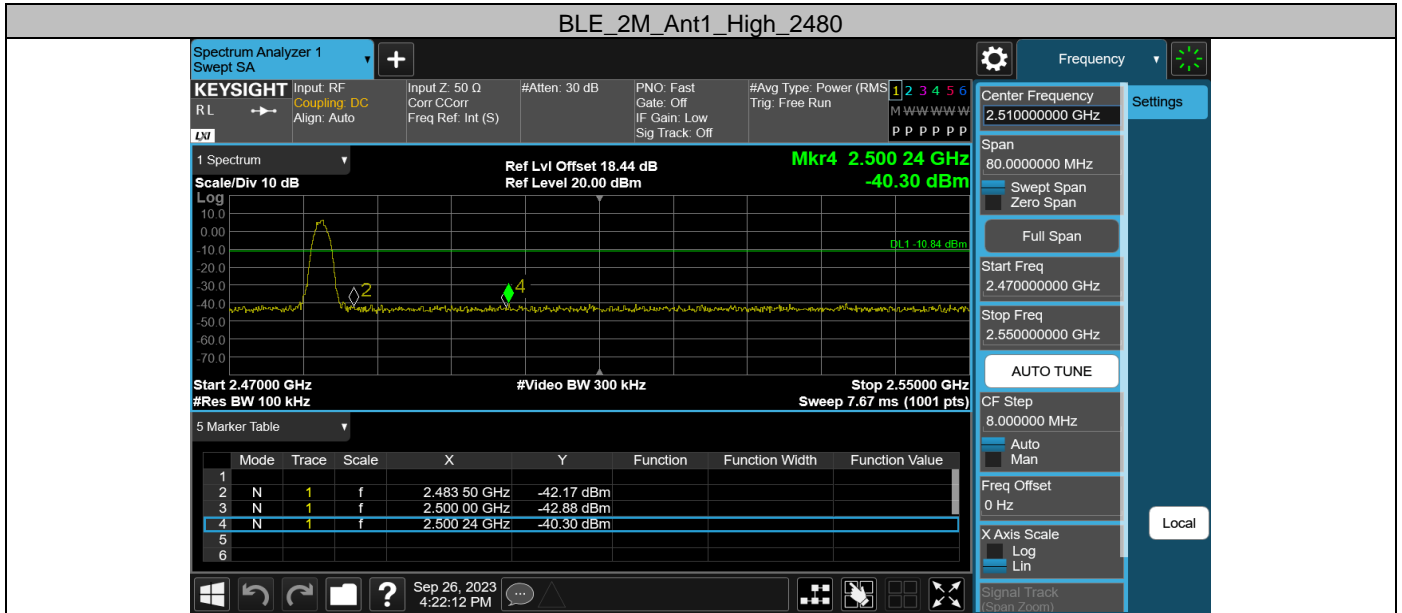


## Appendix F: Band edge measurements Test Result

Test Mode	Antenna	Ch Name	Frequency [MHz]	Ref Level [dBm]	Result [dBm]	Limit [dBm]	Verdict
BLE_1M	Ant1	Low	2402	10.72	-40.41	$\leq -9.28$	PASS
		High	2480	8.59	-40.54	$\leq -11.41$	PASS
BLE_2M	Ant1	Low	2402	8.45	-37.52	$\leq -11.55$	PASS
		High	2480	9.16	-40.3	$\leq -10.84$	PASS

Test Graphs

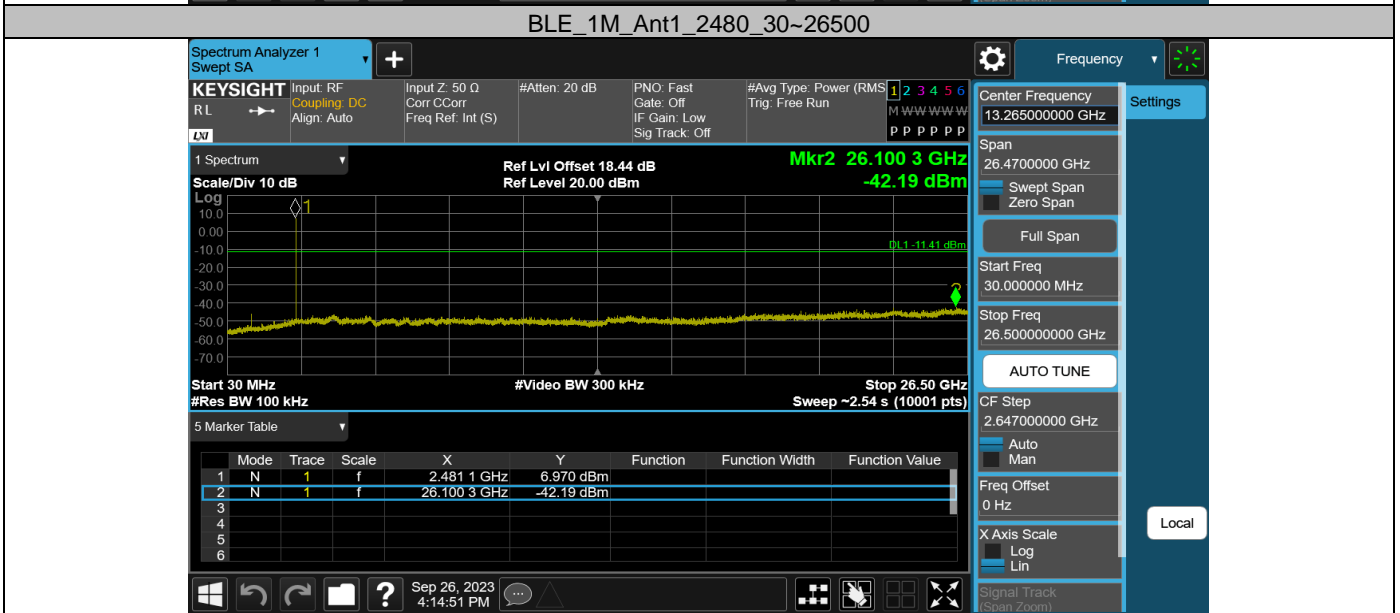
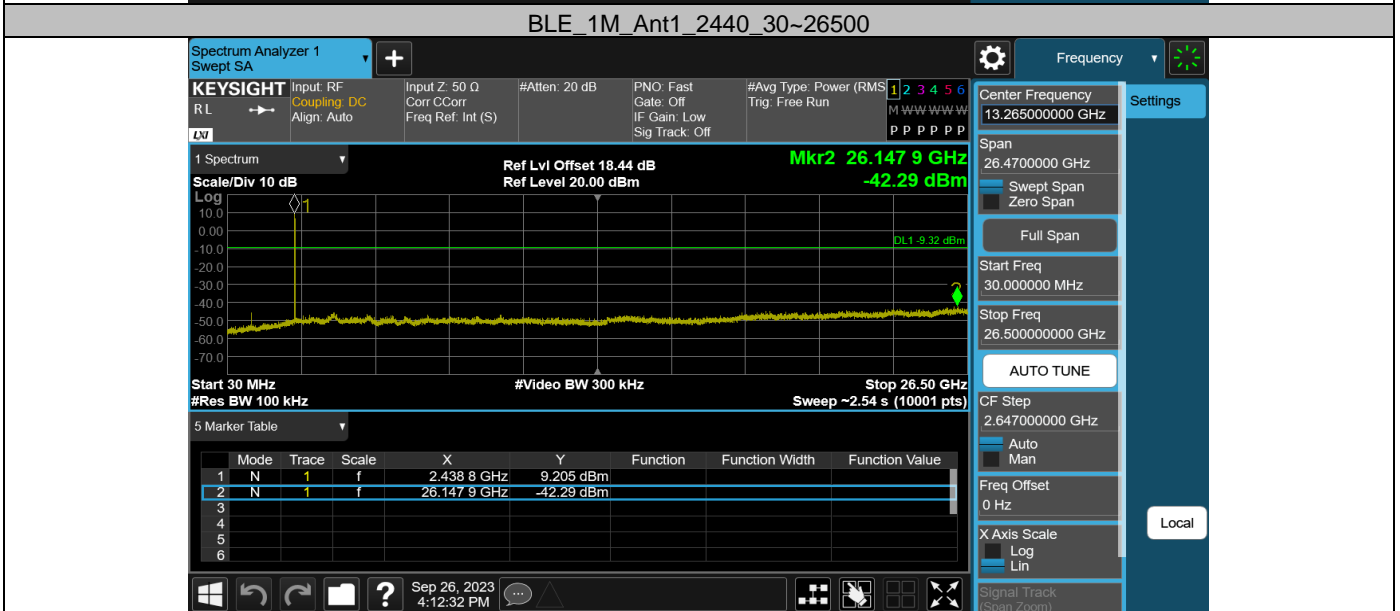
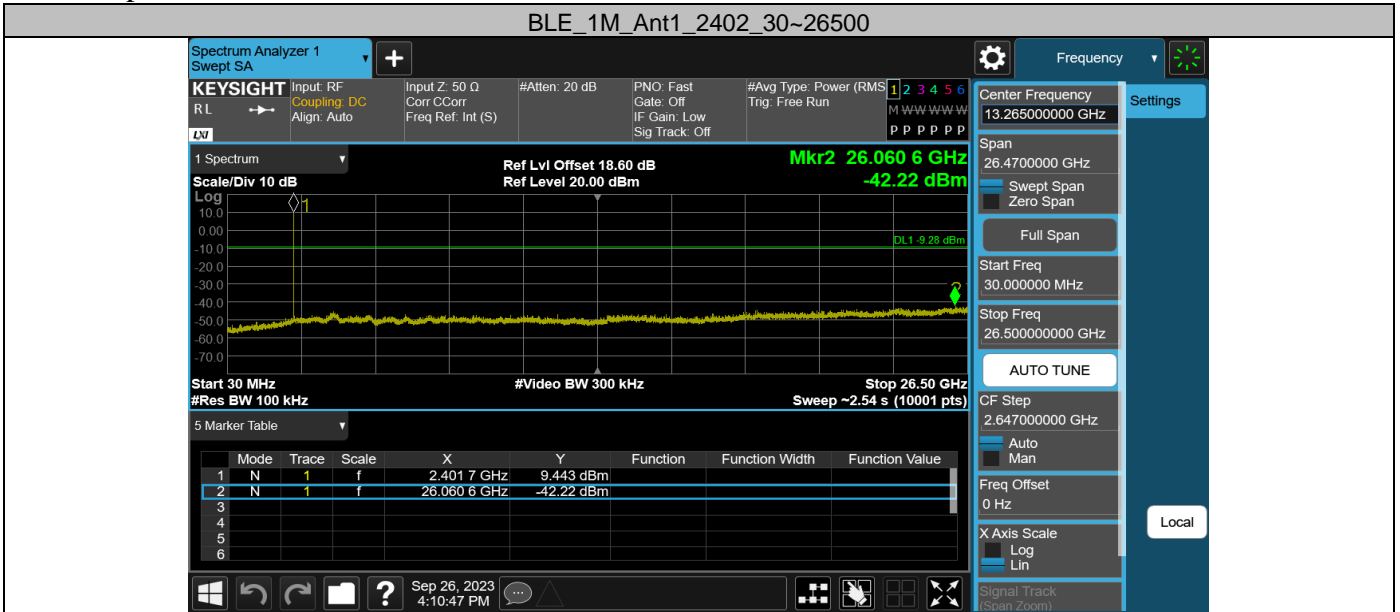




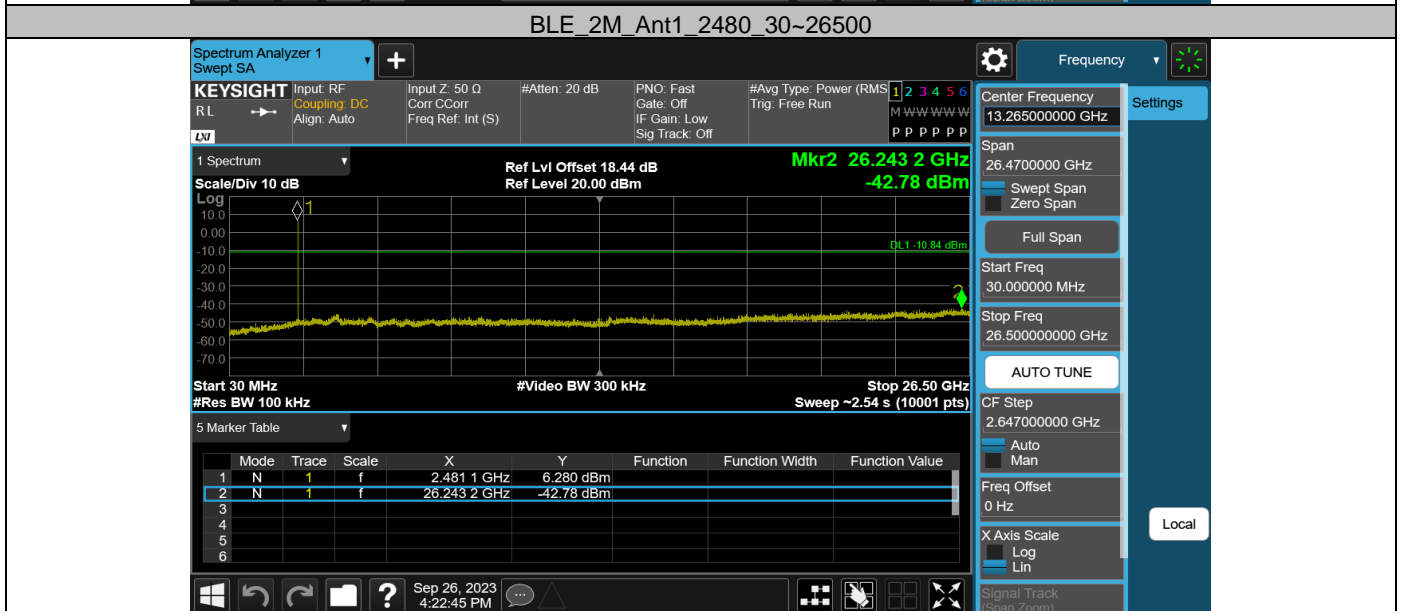
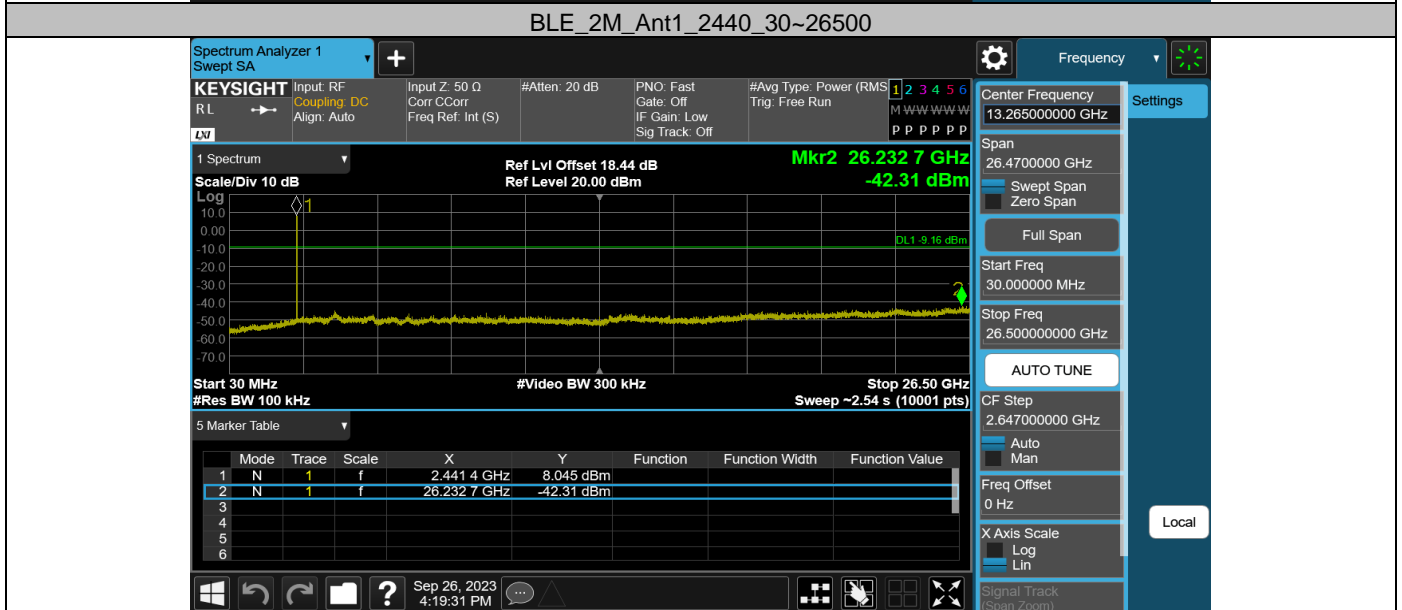
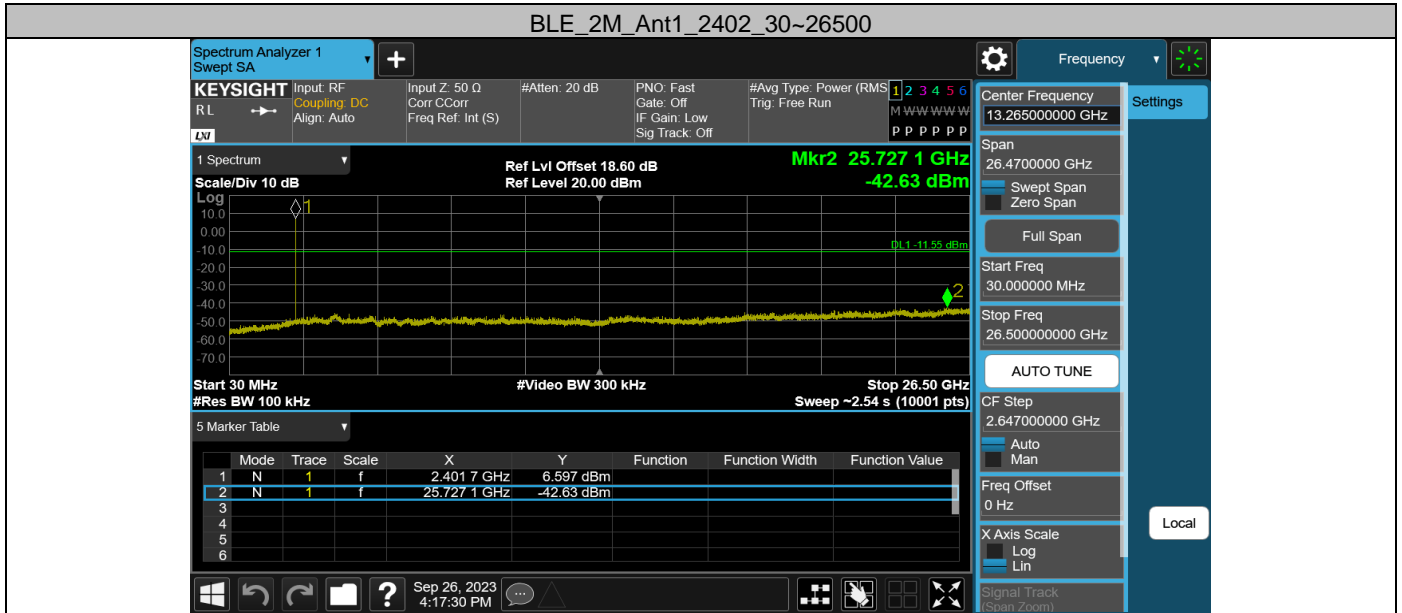
### Appendix G: Conducted Spurious Emission Test Result

Test Mode	Antenna	Frequency[MHz]	Freq Range [MHz]	Ref Level [dBm]	Result [dBm]	Limit[dBm]	Verdict
BLE_1M	Ant1	2402	30~26500	10.72	-42.22	≤-9.28	PASS
		2440	30~26500	10.68	-42.29	≤-9.32	PASS
		2480	30~26500	8.59	-42.19	≤-11.41	PASS
BLE_2M	Ant1	2402	30~26500	8.45	-42.63	≤-11.55	PASS
		2440	30~26500	10.84	-42.31	≤-9.16	PASS
		2480	30~26500	9.16	-42.78	≤-10.84	PASS

Test Graphs

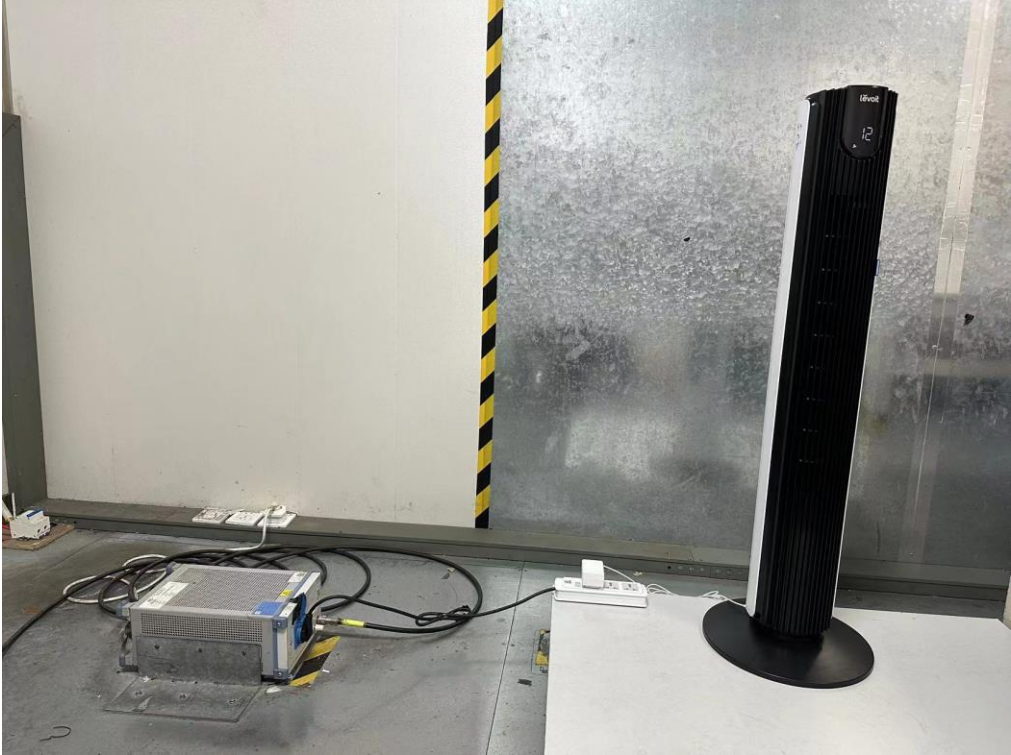




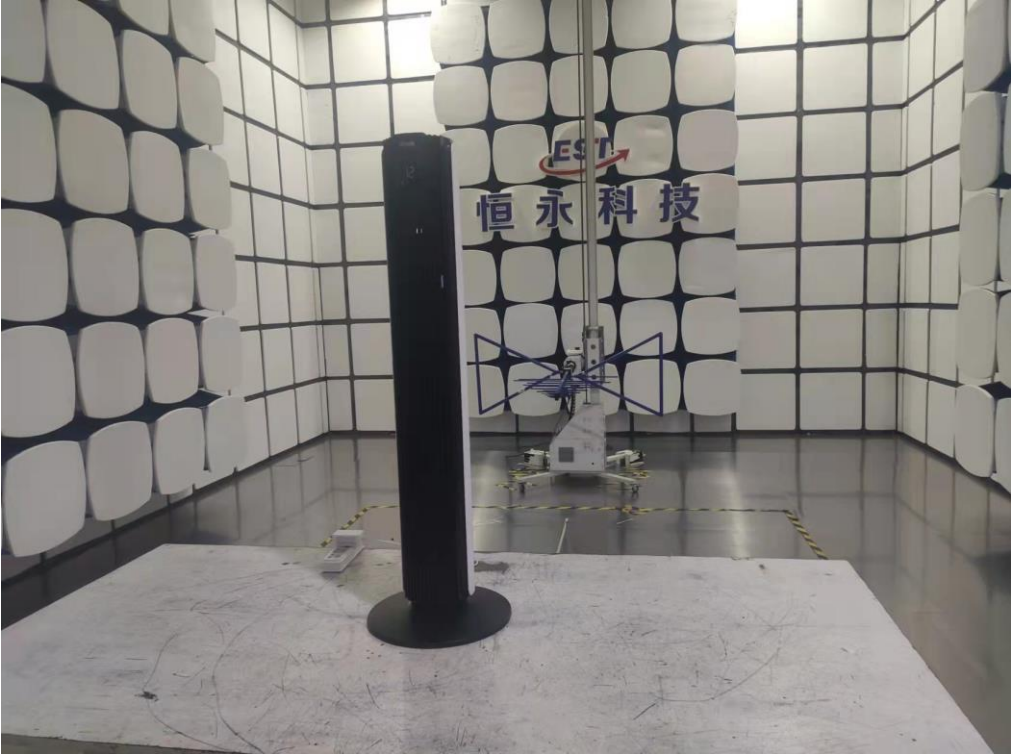


# 12. TEST SETUP PHOTO

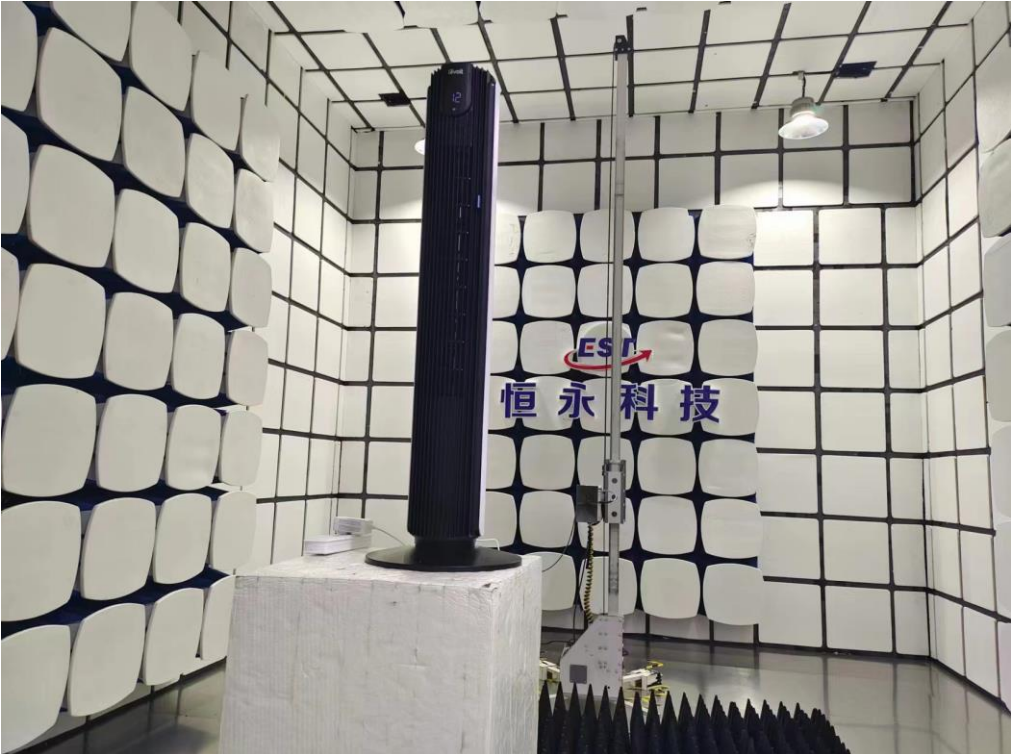
Conducted Test



**Radiated Test (Below 1GHz)**



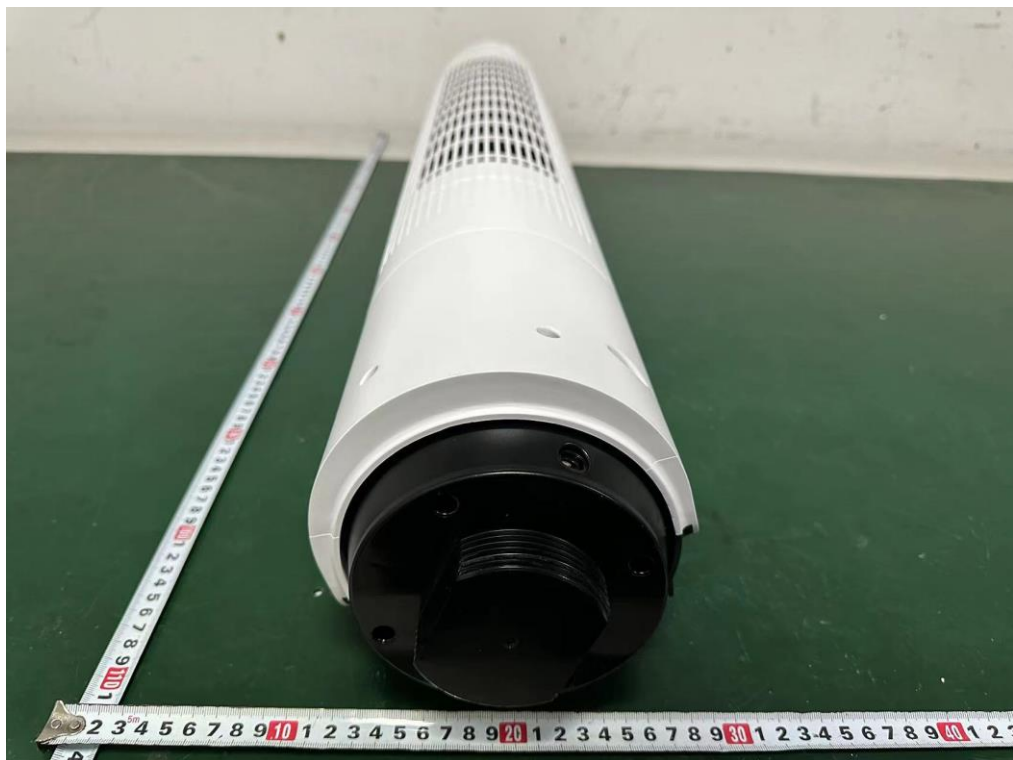
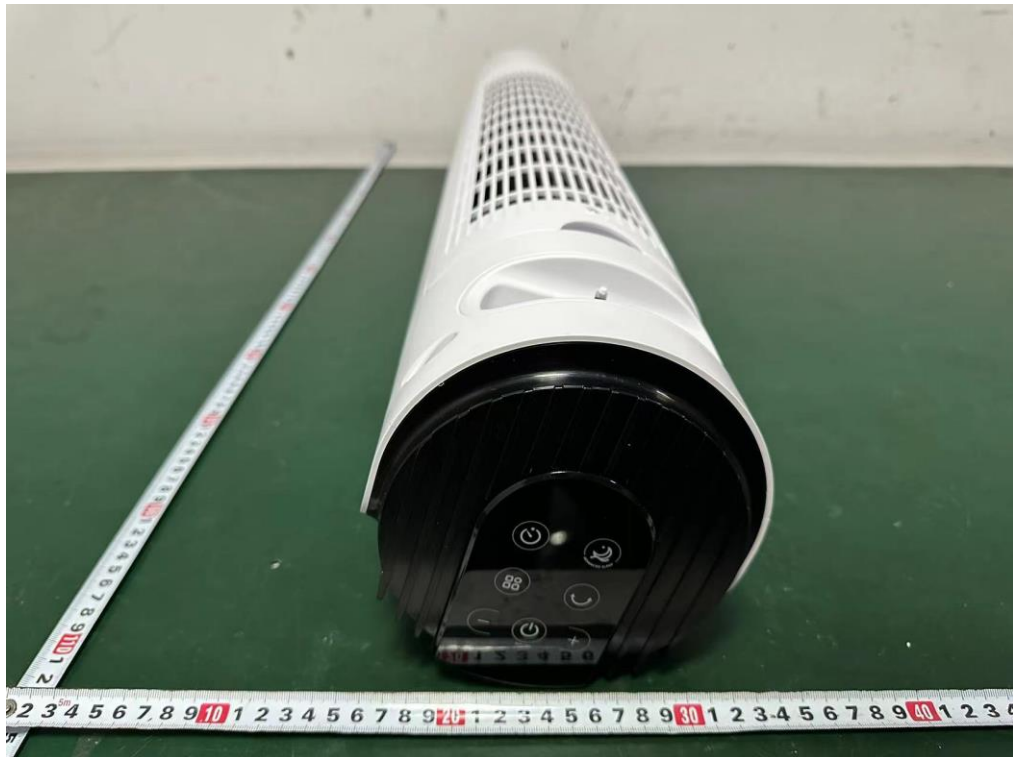
**Radiated Test (Above 1GHz)**



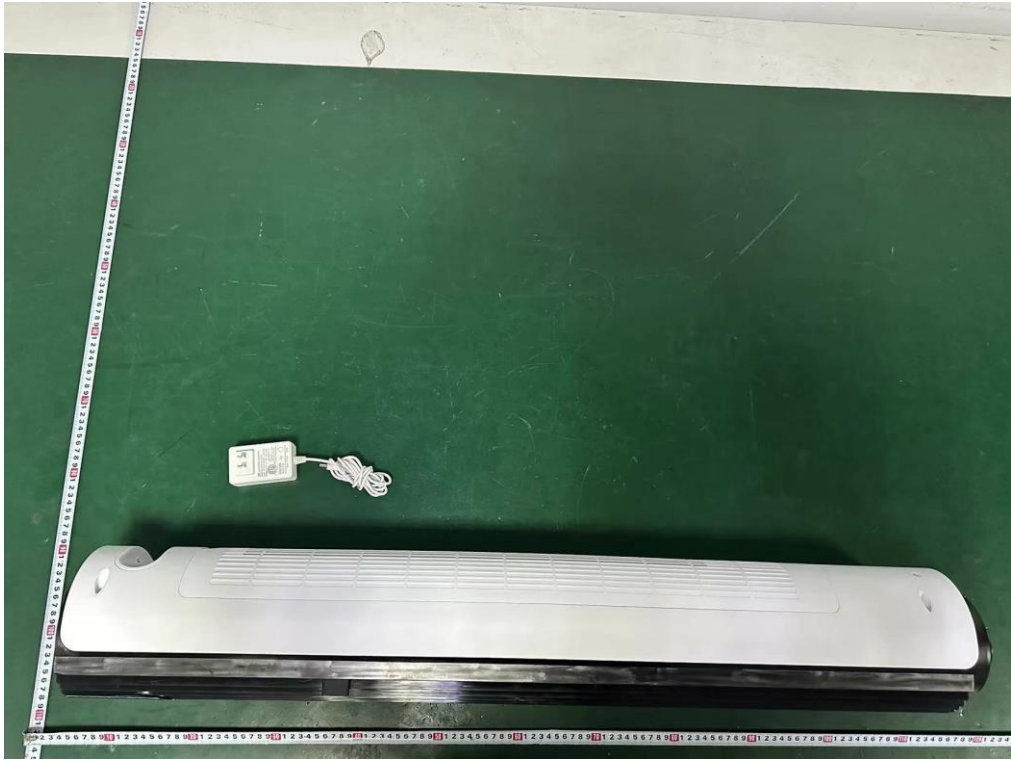


### 13.EUT PHOTO

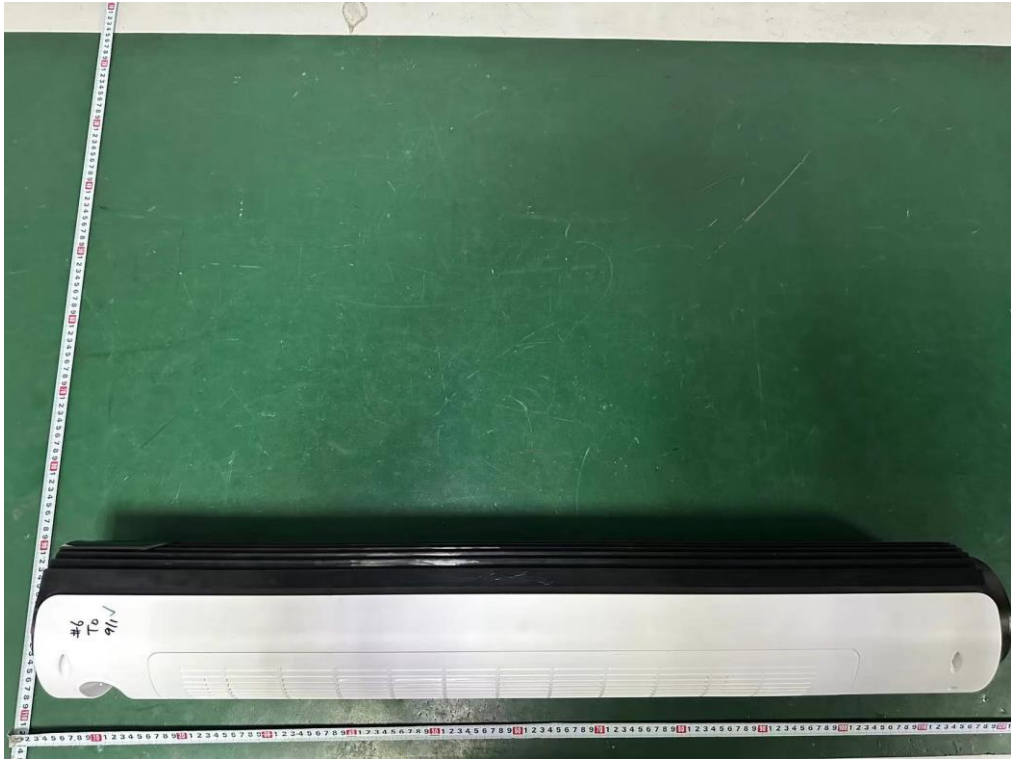
External Photos  
M/N: LTF-F422S-WUS



**External Photos**  
M/N: LTF-F422S-WUS



**External Photos**  
M/N: LTF-F422S-WUS





**External Photos**  
M/N: LTF-F422S-WUS



**External Photos**  
M/N: LTF-F422S-WUS

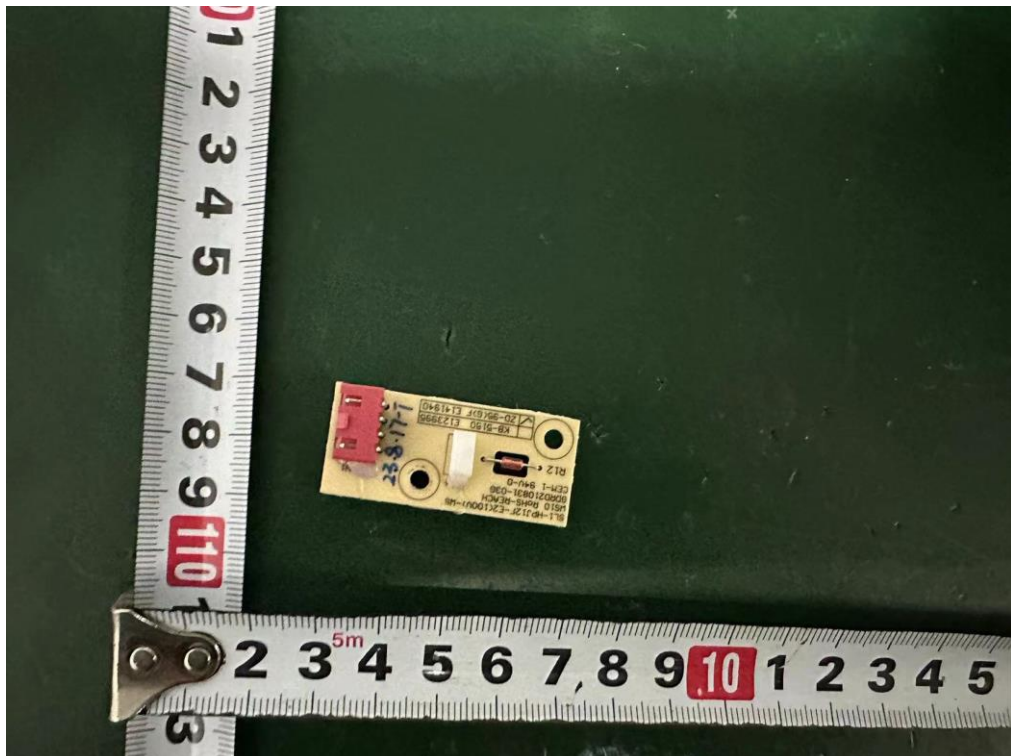




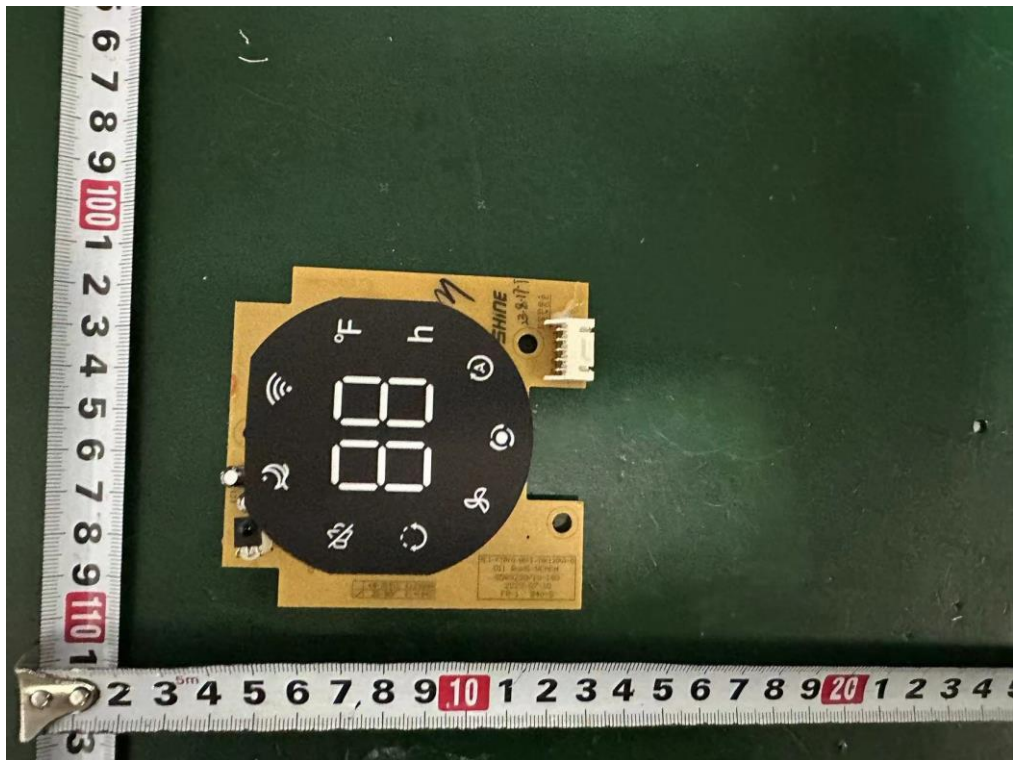
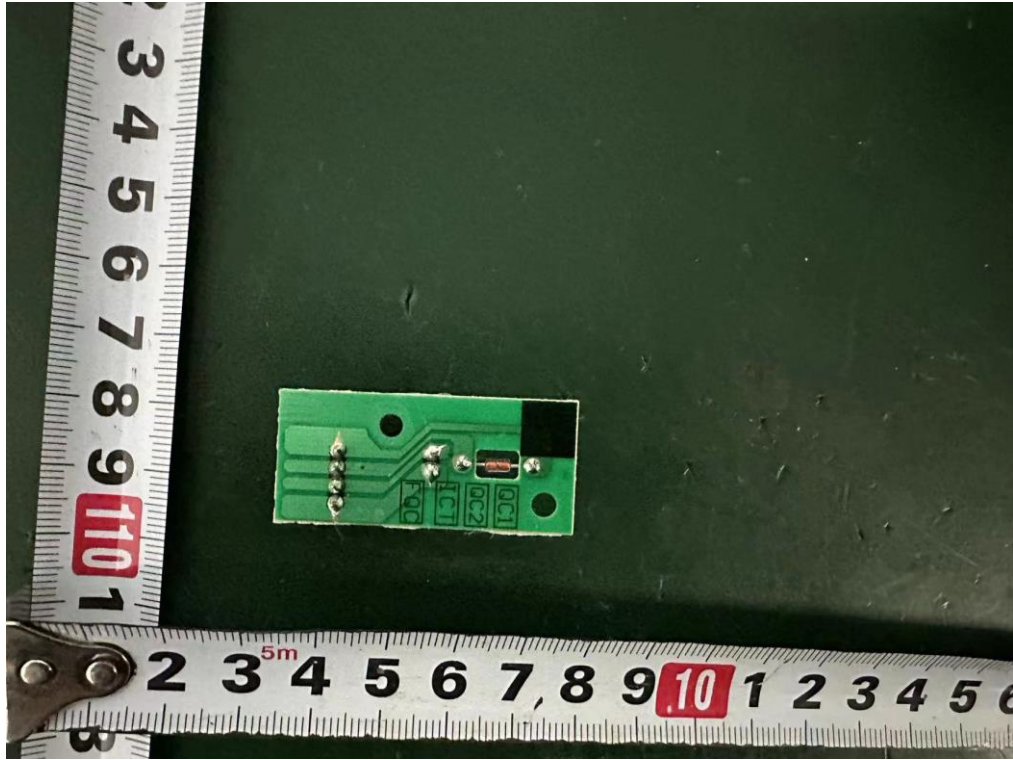
**Internal Photos**  
M/N: LTF-F422S-WUS



**Internal Photos**  
M/N: LTF-F422S-WUS

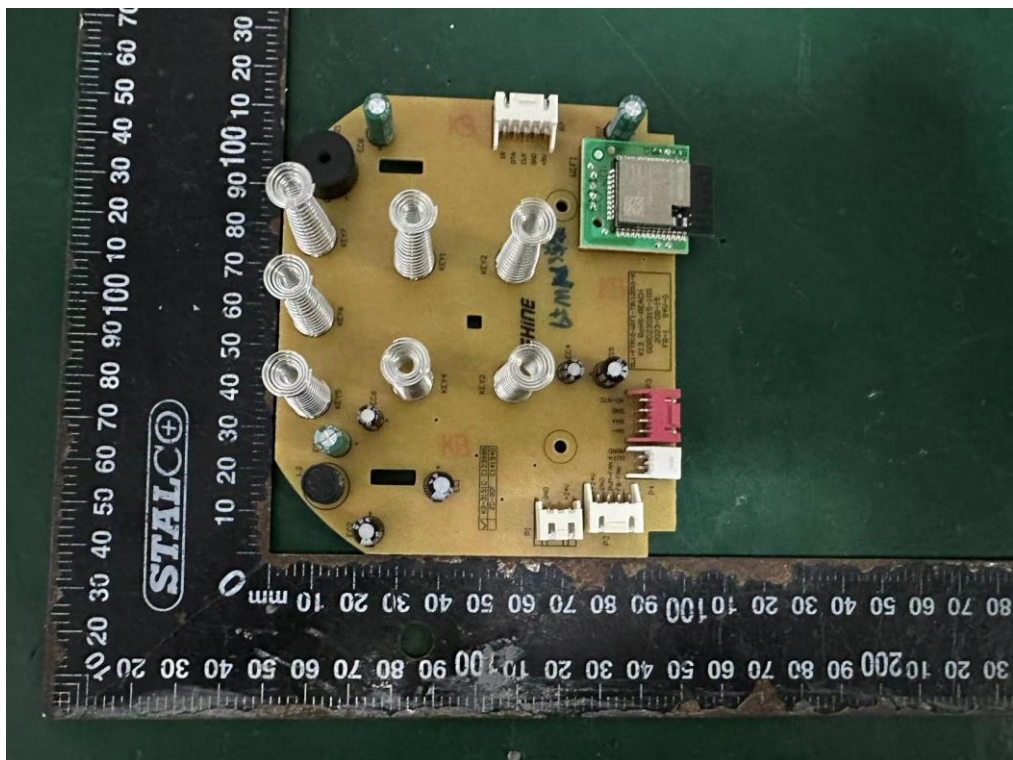
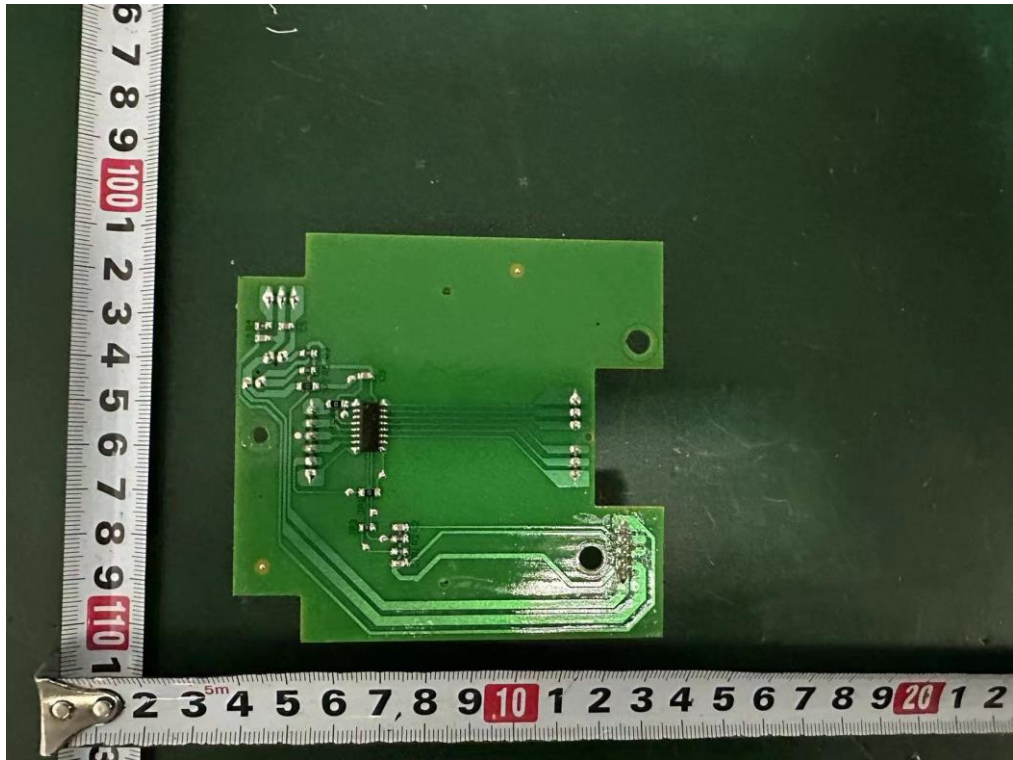


**Internal Photos**  
M/N: LTF-F422S-WUS

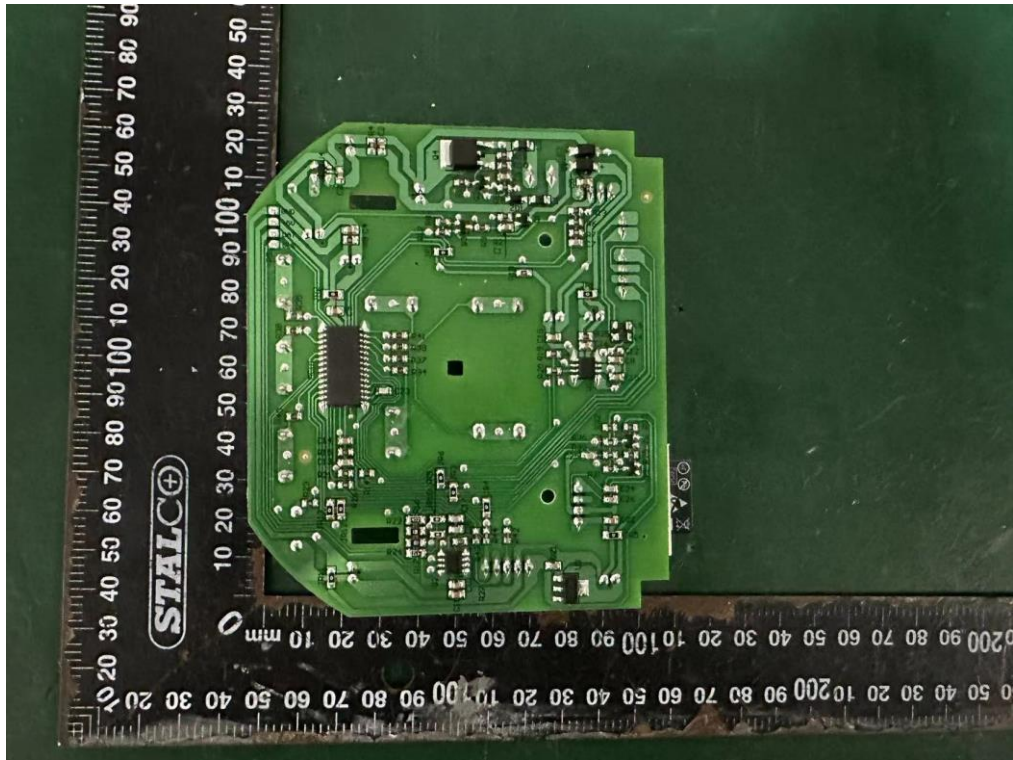




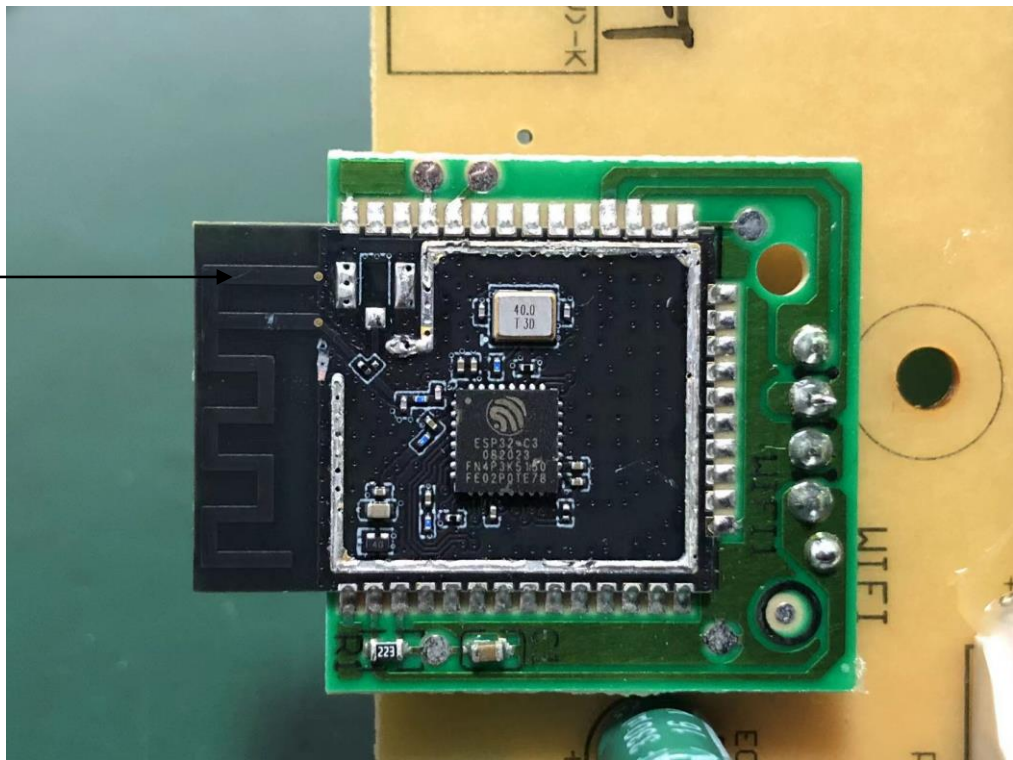
**Internal Photos**  
M/N: LTF-F422S-WUS



**Internal Photos**  
M/N: LTF-F422S-WUS



Bluetooth  
Antenna



**End of Test Report**