

FCC PART 15C TEST REPORT FOR CERTIFICATION  
On Behalf of

Arovast corporation

Levoit VeSync Core 300S Plus True HEPA Smart Air Purifier

Model Number: LAP-C302S-WUSR

Additional Model: LAP-C302S-WUSB

FCC ID: 2ARBY-CORE-300S

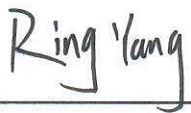
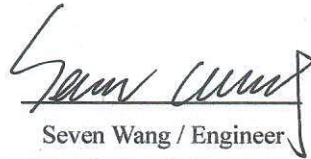

Prepared for:	Arovast Corporation
	1202 N. Miller St., Suite A, Anaheim, CA 92806, USA
Prepared By:	EST Technology Co., Ltd.
	Chilingxiang, Qishantou, Santun, Houjie, Dongguan, Guangdong, China
	Tel: 86-769-83081888-808

Report Number:	ESTE-R2107118-1
Date of Test:	Jul. 28~Aug. 11, 2021
Date of Report:	Aug. 12, 2021

## TABLE OF CONTENTS

Description	Page
TEST REPORT VERIFICATION .....	3
1. GENERAL INFORMATION.....	4
1.1. Description of Device (EUT) .....	4
1.2. Antenna Information .....	4
2. SUMMARY OF TEST .....	5
2.1. Summary of test result.....	5
2.2. Test Facilities.....	6
2.3. Measurement uncertainty .....	7
2.4. Assistant equipment used for test.....	7
2.5. Block Diagram.....	7
2.6. Test mode .....	8
2.7. Channel List.....	9
2.8. Power Setting of Test Software.....	9
2.9. Test Equipmen.....	10
3. RADIATED SPURIOUS EMISSIONS AND BAND EDGE .....	11
3.1. Limit .....	11
3.2. Test Setup .....	12
3.3. Spectrum Analyzer Setting.....	13
3.4. Test Procedure .....	13
3.5. Test Result .....	14
4. AC POWER LINE CONDUCTED EMISSIONS .....	16
4.1. Limit .....	16
4.2. Test Setup .....	16
4.3. Spectrum Analyzer Setting.....	16
4.4. Test Procedure .....	16
4.5. Test Result .....	17
5. TEST SETUP PHOTO.....	19
6. EUT PHOTO .....	21

## EST Technology Co., Ltd.

<b>Applicant:</b>	Arovast Corporation		
<b>Address:</b>	1202 N. Miller St., Suite A, Anaheim, CA 92806, USA		
<b>Manufacturer:</b>	Arovast Corporation		
<b>Address:</b>	1202 N. Miller St., Suite A, Anaheim, CA 92806, USA		
<b>Factory:</b>	Xiamen BRI Environmental Industry Co., Ltd.		
<b>Address:</b>	R&D Office Building 1, 2&3 Workshop, No. 30 Ma An Road, Tong An District, Xiamen, Fujian Province, P. R. China		
<b>E.U.T:</b>	Levoit VeSync Core 300S Plus True HEPA Smart Air Purifier		
<b>Model Number:</b>	LAP-C302S-WUSR		
<b>Additional Model:</b>	LAP-C302S-WUSB (Note: They are identical except model name)		
<b>Power Supply:</b>	AC 120V 50/60Hz		
<b>Trade Name:</b>	Levoit	<b>Serial No.:</b>	-----
<b>Date of Receipt:</b>	Jul. 28, 2021	<b>Date of Test:</b>	Jul. 28~Aug. 11, 2021
<b>Test Specification:</b>	FCC Part 15 Subpart C (15.247) ANSI C63.10:2013 FCC KDB 558074 D01 15.247 Meas Guidance v05r02		
<b>Test Result:</b>	<p>The device described above is tested by EST Technology Co., Ltd. The measurement results were contained in this test report and EST Technology Co., Ltd. was assumed full responsibility for the accuracy and completeness of these measurements. Also, this report shows that the EUT to be technically compliance with the FCC Rules and Regulations Part 15 Subpart C requirements.</p> <p style="text-align: center;">This report applies to above tested sample only and shall not be reproduced in part without written approval of EST Technology Co., Ltd.</p>		
		<b>Date:</b> Aug. 12, 2021	
<b>Prepared by:</b>	<b>Reviewed by:</b>	<b>Approved by:</b>	
			
Ring Yang / Assistant	Seven Wang / Engineer	Iceman Hu / Manager	
<b>Other Aspects:</b> This report base on the previous report with report number: ESTE-R2107118, In this report, the product name has been modified to add new models and plasma functions, therefore, selected the Radiation Emissions (30MHz-1GHz) and Conducted Emissions were performed test.			
<i>Abbreviations: OK/P=passed    fail/F=failed    n.a/N=not applicable    E.U.T=equipment under tested</i>			
<i>This test report is based on a single evaluation of one sample of above mentioned products ,It is not permitted to be duplicated in extracts without written approval of EST Technology Co., Ltd.</i>			

## 1. GENERAL INFORMATION

### 1.1. Description of Device (EUT)

Product Name	:	Levoit VeSync Core 300S Plus True HEPA Smart Air Purifier
Model Number	:	LAP-C302S-WUSR
Software Version	:	2.0.01
Hardware Version	:	V1.4.1
Operation frequency	:	2402MHz~2480MHz
Number of channel	:	79
Modulation Type	:	BT BDR(1Mbps): GFSK BT EDR(2Mbps): $\pi/4$ -DQPSK BT EDR(3Mbps): 8-DPSK
Sample Type	:	Prototype production

Note:

For a more detailed features description, please refer to the manufacturer's specifications or the user's manual.

### 1.2. Antenna Information

Ant No.	Brand	Model Name	Antenna Type	Connector	Gain (dBi)
1	N/A	N/A	PCB	N/A	1.44

## 2. SUMMARY OF TEST

### 2.1. Summary of test result

Report Section	Description of Test Item	FCC Standard Section	Results
3	Radiated Spurious Emissions and Band Edge	15.205 15.209 15.247(d)	PASS
4	AC Power Line Conducted Emissions	15.207	PASS

## 2.2. Test Facilities

EMC Lab : Certificated by CNAS, CHINA  
Registration No.: L5288  
This Certificate is valid until: November 12, 2023

Certificated by FCC, USA  
Designation Number: CN1215  
This Certificate is valid until: January 31, 2022

Certificated by A2LA, USA  
Registration No.: 4366.01  
This Certificate is valid until: January 31, 2022

Certificated by Industry Canada  
CAB identifier No.: CN0035  
This Certificate is valid until: January 31, 2022

Certificated by VCCI, Japan  
Registration No.:C-14103; T-20073; R-13663;  
R-20103; G-20097  
Date of registration: Apr. 20, 2020  
This Certificate is valid until: Apr. 19, 2023

Certificated by TUV Rheinland, Germany  
Registration No.: UA 50413872 0001  
Date of registration: July 31, 2018

Certificated by Intertek  
Registration No.: 2011-RTL-L2-64  
Date of registration: November 08, 2018

Name of Firm : EST Technology Co., Ltd.

Site Location : Chilingxiang, Qishantou, Santun, Houjie, Dongguan, Guangdong, China

### 2.3. Measurement uncertainty

Test Item	Uncertainty
Uncertainty for Conduction emission test	±3.48dB
Uncertainty for spurious emissions test (30MHz-1GHz)	±4.60 dB(Polarize: H)
	±4.68 dB(Polarize: V)
Uncertainty for spurious emissions test (1GHz to 25GHz)	±4.96dB
Uncertainty for radio frequency	$7 \times 10^{-8}$
Uncertainty for conducted RF Power	1.08dB
Uncertainty for Power density test	0.26dB

Note: This uncertainty represents an expanded uncertainty expressed at approximately the 95% confidence level using a coverage factor of k=2.

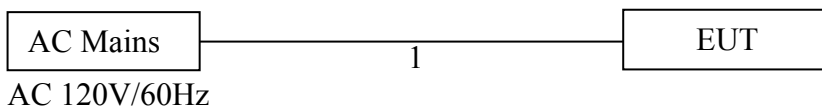
### 2.4. Assistant equipment used for test

Item	Equipment	Brand	Model Name/Type No.	FCC ID	Series No.
-	-	-	-	-	-

Item	Shielded Type	Ferrite Core	Length	Note
1	NO	NO	1.7m	AC Cable

### 2.5. Block Diagram

For radiated emissions test: EUT was placed on a turn table, which is 0.8 meter high above ground. EUT was beset into Bluetooth test mode by software before test.



(EUT: Levoit VeSync Core 300S Plus True HEPA Smart Air Purifier)

## 2.6. Test mode

Combining all the rates, modulations, and packet types, the Pre-scans had been carried out. The worst case test mode was selected for the final test as listed below.

Test Item	Modulation Type	Operating Mode	Packet Type	Test Channel
Radiated Spurious Emissions(Below 1GHz)	GFSK&8-DPSK	Non Hopping	DH5	Low/Middle/High
AC Power Line Conducted Emissions	GFSK&8-DPSK	Non Hopping	DH5	Low/Middle/High

Note:

1. In radiated measurement,the EUT had been pre-scan on the positioned of each 3 axis(X,Y,Z), the worst case was found when positioned on **X-plane**.



### 2.7. Channel List

Channel No.	Frequency (MHz)	Channel No.	Frequency (MHz)	Channel No.	Frequency (MHz)	Channel No.	Frequency (MHz)
0	2402	1	2403	2	2404	3	2405
4	2406	5	2407	6	2408	7	2409
8	2410	9	2411	10	2412	11	2413
12	2414	13	2415	14	2416	15	2417
16	2418	17	2419	18	2420	19	2421
20	2422	21	2423	22	2424	23	2425
24	2426	25	2427	26	2428	27	2429
28	2430	29	2431	30	2432	31	2433
32	2434	33	2435	34	2436	35	2437
36	2438	37	2439	38	2440	39	2441
40	2442	41	2443	42	2444	43	2445
44	2446	45	2447	46	2448	47	2449
48	2450	49	2451	50	2452	51	2453
52	2454	53	2455	54	2456	55	2457
56	2458	57	2459	58	2460	59	2461
60	2462	61	2463	62	2464	63	2465
64	2466	65	2467	66	2468	67	2469
68	2470	69	2471	70	2472	71	2473
72	2474	73	2475	74	2476	75	2477
76	2478	77	2479	78	2480	-	-

### 2.8. Power Setting of Test Software

Software Name	ESP_RF_test_tool_v2.5		
Frequency(MHz)	2402	2441	2480
GFSK(1Mbps) Setting	default	default	default
8-DPSK(3Mbps) Setting	default	default	default

## 2.9. Test Equipmen

For conducted emission test						
Equipment	Manufacturer	Model No.	Serial No.	Calibration Body	Last Cal.	Next Cal.
EMI Test Receiver	Rohde & Schwarz	ESHS30	EST-E001	LISAI	June 13,21	1 Year
Artificial Mains Network	Rohde & Schwarz	ENV216	EST-E002	LISAI	June 13,21	1 Year
Pulse Limiter	Rohde & Schwarz	ESH3-Z2	EST-E078	LISAI	June 13,21	1 Year
Test Software	Audix	e3-6.111221a	N/A	N/A	N/A	N/A

For radiated emission test(9 kHz-30MHz)						
Equipment	Manufacturer	Model No.	Serial No.	Calibration Body	Last Cal.	Next Cal.
EMI Test Receiver	Rohde & Schwarz	ESR7	EST-E047	LISAI	June 13,21	1 Year
Active Loop Antenna	SCHWAREB ECK	FMZB 1519B	EST-E054	LISAI	June 13,21	1 Year
Test Software	Audix	e3-6.111221a	N/A	N/A	N/A	N/A
9kHz-30MHz Cable	N/A	EST-001	N/A	N/A	N/A	N/A

For radiated emissions test (30-1000MHz)						
Equipment	Manufacturer	Model No.	Serial No.	Calibration Body	Last Cal.	Next Cal.
EMI Test Receiver	Rohde & Schwarz	ESR7	EST-E047	LISAI	June 13,21	1 Year
Bilog Antenna	Teseq	CBL 6111D	EST-E034	LISAI	June 13,21	1 Year
Test Software	Audix	e3-6.111221a	N/A	N/A	N/A	N/A
30-1000MHz Cable	N/A	EST-002	N/A	N/A	N/A	N/A

### 3. RADIATED SPURIOUS EMISSIONS AND BAND EDGE

#### 3.1. Limit

All the emissions appearing within 15.205 restricted frequency bands shall not exceed the limits shown in 15.209, all the other emissions shall be at least 20dB below the fundamental emissions, or comply with 15.209 limits.

#### 15.205 Restricted frequency band

MHz	MHz	MHz	GHz
0.090 - 0.110	16.42 - 16.423	399.9 - 410	4.5 - 5.15
<sup>1</sup> 0.495 - 0.505	16.69475 - 16.69525	608 - 614	5.35 - 5.46
2.1735 - 2.1905	16.80425 - 16.80475	960 - 1240	7.25 - 7.75
4.125 - 4.128	25.5 - 25.67	1300 - 1427	8.025 - 8.5
4.17725 - 4.17775	37.5 - 38.25	1435 - 1626.5	9.0 - 9.2
4.20725 - 4.20775	73 - 74.6	1645.5 - 1646.5	9.3 - 9.5
6.215 - 6.218	74.8 - 75.2	1660 - 1710	10.6 - 12.7
6.26775 - 6.26825	108 - 121.94	1718.8 - 1722.2	13.25 - 13.4
6.31175 - 6.31225	123 - 138	2200 - 2300	14.47 - 14.5
8.291 - 8.294	149.9 - 150.05	2310 - 2390	15.35 - 16.2
8.362 - 8.366	156.52475 - 156.52525	2483.5 - 2500	17.7 - 21.4
8.37625 - 8.38675	156.7 - 156.9	2690 - 2900	22.01 - 23.12
8.41425 - 8.41475	162.0125 - 167.17	3260 - 3267	23.6 - 24.0
12.29 - 12.293	167.72 - 173.2	3332 - 3339	31.2 - 31.8
12.51975 - 12.52025	240 - 285	3345.8 - 3358	36.43 - 36.5
12.57675 - 12.57725	322 - 335.4	3600 - 4400	( <sup>2</sup> )

#### 15.209 Limit

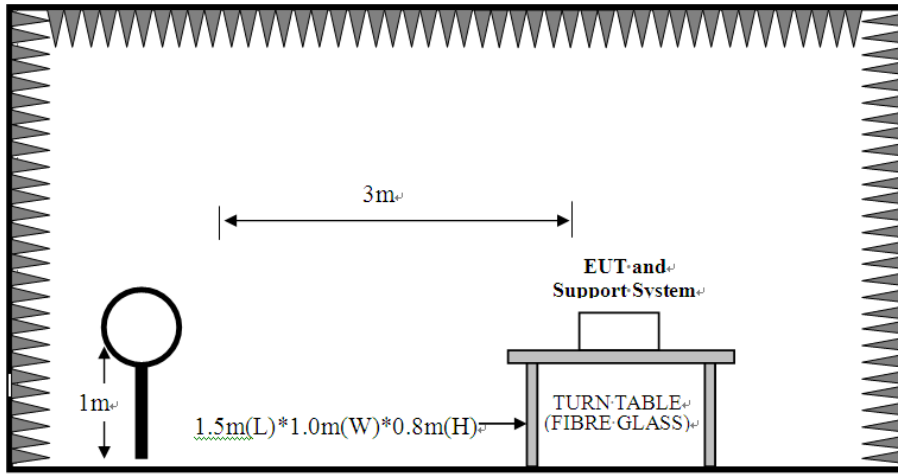
Frequency (MHz)	Field Strength(μV/m)	Distance(m)
0.009-0.490	2400/F(kHz)	300
0.490-1.705	24000/F(kHz)	30
1.705-30	30	30
30-88	100	3
88-216	150	3
216-960	200	3
Above 960	500	3

Note:

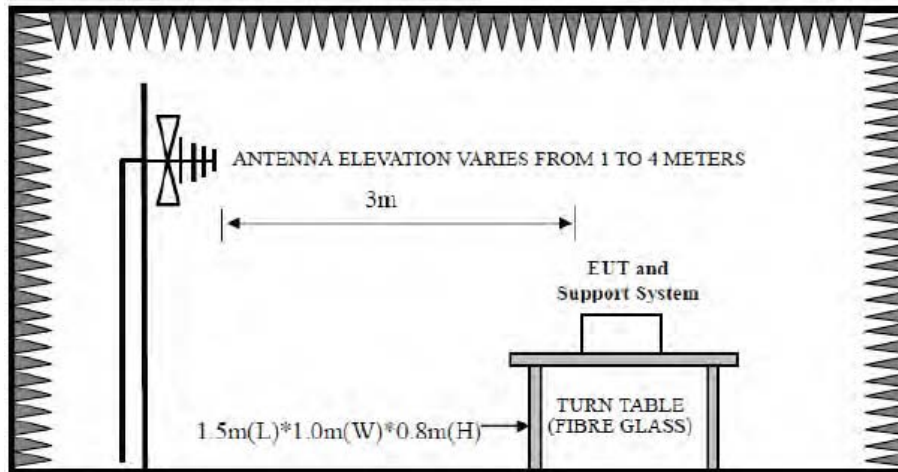
- (1) Emission level dBμV = 20 log Emission level μV/m.
- (2) The smaller limit shall apply at the cross point between two frequency bands.
- (3) Distance is the distance in meters between the measuring instrument, antenna and the closest point of any part of the device or system.

### 3.2. Test Setup

9kHz~30MHz



30~1000MHz



### 3.3. Spectrum Analyzer Setting

For 9KHz-150KHz

Spectrum Parameters	Setting
RBW	300Hz(for Peak&AVG)/CISPR 200Hz(for QP)
VBW	300Hz(for Peak&AVG)/CISPR 200Hz(for QP)
Start frequency	9KHz
Stop frequency	150KHz
Sweep Time	Auto
Detector	PEAK/QP/AVG
Trace Mode	Max Hold

For 150KHz-30MHz

Spectrum Parameters	Setting
RBW	9KHz
VBW	9KHz
Start frequency	150KHz
Stop frequency	30MHz
Sweep Time	Auto
Detector	QP
Trace Mode	Max Hold

For 30MHz-1GHz

Spectrum Parameters	Setting
RBW	120KHz
VBW	300KHz
Start frequency	30MHz
Stop frequency	1GHz
Sweep Time	Auto
Detector	QP

### 3.4. Test Procedure

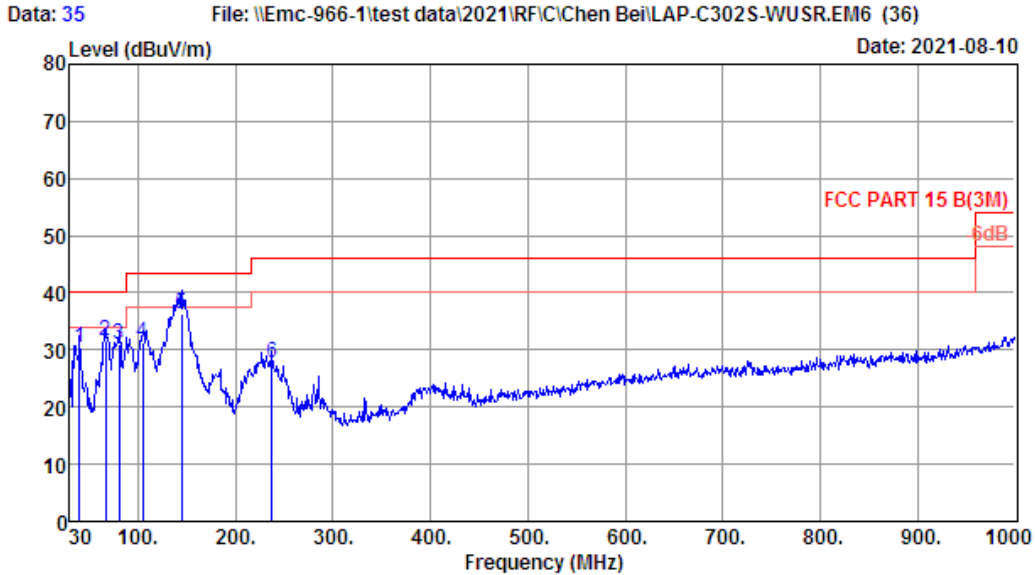
- a. EUT was placed on a turn table, which is 0.8 meter high above ground for below 1GHz test.
- b. EUT is set 3 meters away from the receiving antenna, which is mounted on a antenna tower.
- c. Set the EUT transmit continuously with maximum output power.
- d. The turn table can rotate 360 degrees to determine the position of the maximum emission level.
- e. The antenna can be moved up and down between 1 meter and 4 meters to find out the maximum emission level. Both horizontal and vertical polarization of the antenna are set on test.
- f. Spectrum analyzer setting parameters in accordance with section 3.3.
- g. Repeat above procedures until all channels and test modes were measured.
- h. Record the results in the test report.

### 3.5. Test Result

#### Radiated Emissions Below 1GHz

EST Technology

Chilingxiang, Qishantou, Santun,  
Houjie, Dongguan, Guangdong, China  
Tel: +86-769-83081888  
Fax: +86-769-83081878



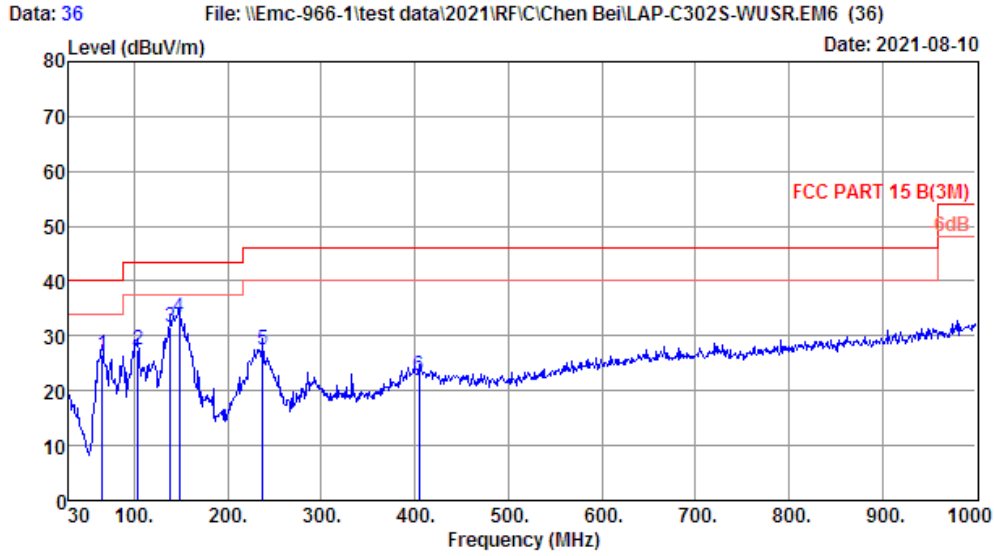
Site no. : 1# 966 Chamber Data no. : 35  
 Dis. / Ant. : 3m 37062 Ant. pol. : VERTICAL  
 Limit : FCC PART 15 B(3M)  
 Env. / Ins. : Temp:22.1°C ; Humi:51% ; Press:101.52kPa  
 Engineer : Pablo  
 EUT : Levoit VeSync Core 300S Plus  
 True HEPA Smart Air Purifier  
 Power : AC 120V/60Hz  
 M/N : LAP-C302S-WUSR  
 Test Mode : TX Mode

	Freq. (MHz)	ANT Factor (dB/m)	Cable Loss (dB)	Reading (dBUV)	Emission Level (dBUV/m)	Limit (dBUV/m)	Margin ( dB)	Remark
1	39.70	12.70	0.96	16.86	30.52	40.00	9.48	QP
2	66.86	6.20	1.30	24.05	31.55	40.00	8.45	QP
3	80.44	7.80	1.42	21.73	30.95	40.00	9.05	QP
4	104.69	10.50	1.66	19.25	31.41	43.50	12.09	QP
5	144.46	12.03	1.87	22.55	36.45	43.50	7.05	QP
6	237.58	11.44	2.47	13.92	27.83	46.00	18.17	QP

Remarks: 1. Emission Level= Antenna Factor + Cable Loss + Reading.  
 2. Margin= Limit - Emission Level.  
 3. The emission levels that are 20dB below the official limit are not reported.

EST Technology

Chilingxiang, Qishantou, Santun,  
Houjie, Dongguan, Guangdong, China  
Tel: +86-769-83081888  
Fax: +86-769-83081878



Site no. : 1# 966 Chamber Data no. : 36  
 Dis. / Ant. : 3m 37062 Ant. pol. : HORIZONTAL  
 Limit : FCC PART 15 B(3M)  
 Env. / Ins. : Temp:22.1°C;Humi:51%;Press:101.52kPa  
 Engineer : Pablo  
 EUT : Levoit VeSync Core 300S Plus  
 True HEPA Smart Air Purifier  
 Power : AC 120V/60Hz  
 M/N : LAP-C302S-WUSR  
 Test Mode : TX Mode

	Freq. (MHz)	ANT Factor (dB/m)	Cable Loss (dB)	Reading (dBuV)	Emission Level (dBuV/m)	Limit (dBuV/m)	Margin ( dB)	Remark
1	65.89	6.00	1.31	19.15	26.46	40.00	13.54	QP
2	103.72	10.42	1.60	15.38	27.40	43.50	16.10	QP
3	138.64	12.52	1.84	17.17	31.53	43.50	11.97	QP
4	148.34	11.84	1.91	19.48	33.23	43.50	10.27	QP
5	237.58	11.44	2.47	13.69	27.60	46.00	18.40	QP
6	404.42	16.65	3.08	3.08	22.81	46.00	23.19	QP

Remarks: 1. Emission Level= Antenna Factor + Cable Loss + Reading.  
 2. Margin= Limit - Emission Level.  
 3. The emission levels that are 20dB below the official limit are not reported.

Note:

1. The amplitude of 9KHz to 30MHz spurious emission that is attenuated by more than 20dB below the permissible limit has no need to be reported.
2. All test mode had been pre-test, only the worst case was reported.



## 4. AC POWER LINE CONDUCTED EMISSIONS

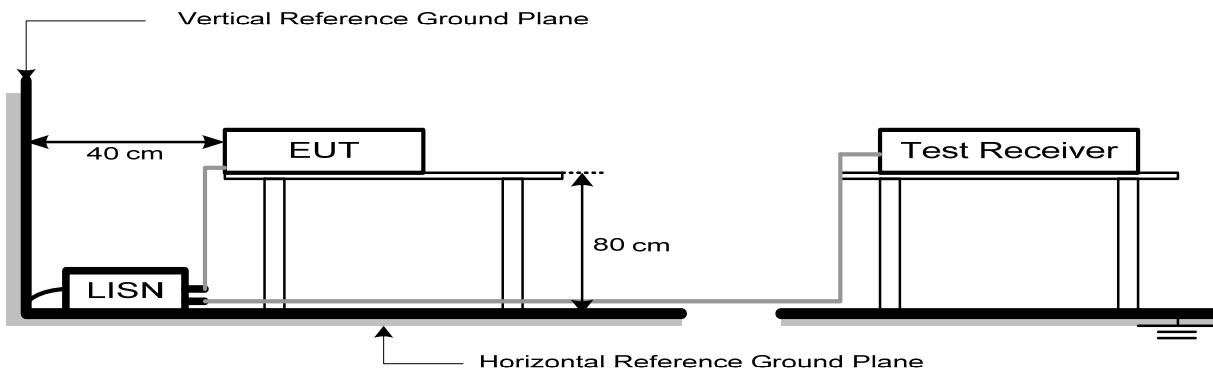
### 4.1. Limit

Frequency	Maximum RF Line Voltage	
	Quasi-Peak Level dB(μV)	Average Level dB(μV)
150kHz ~ 500kHz	66 ~ 56*	56 ~ 46*
500kHz ~ 5MHz	56	46
5MHz ~ 30MHz	60	50

Note:

1. \* Decreasing linearly with logarithm of frequency.
2. The lower limit shall apply at the transition frequencies.

### 4.2. Test Setup



### 4.3. Spectrum Analyzer Setting

Spectrum Parameters	Setting
RBW	9KHz
VBW	9KHz
Start frequency	150KHz
Stop frequency	30MHz
Sweep Time	Auto
Detector	QP/AVG
Trace Mode	Max Hold

### 4.4. Test Procedure

- a. The EUT was placed on a non-metallic table, 80cm above the ground plane.
- b. The EUT Power connected to the power mains through a line impedance stabilization network.
- c. Provides a 50 ohm coupling impedance for the EUT (Please refer the block diagram of the test setup and photographs).
- d. Set the EUT transmit continuously with maximum output power.
- e. Spectrum analyzer setting parameters in accordance with section 4.3.
- f. The AC line are checked to find out the maximum conducted emission. In order to find the maximum emission levels, the relative positions of equipment and all of the interface cables shall be changed according to ANSI C63.10: 2013 on Conducted Emission Test.
- g. Record the results in the test report.

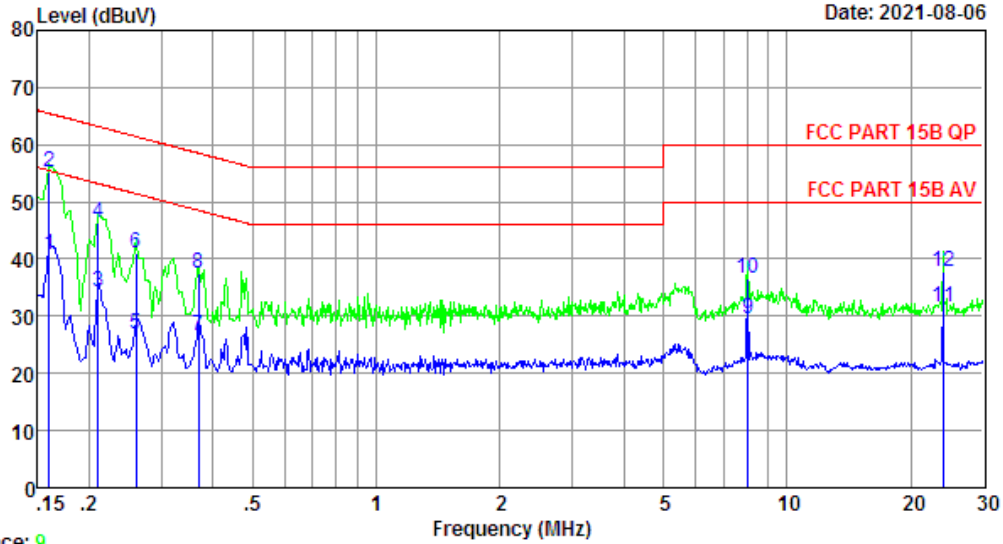


### 4.5. Test Result

**EST Technology**

Chilingxiang, Qishantou, Santun,  
Houjie, Dongguan, Guangdong, China  
Tel: +86-769-83081888  
Fax: +86-769-83081878

Data: 10 File: \\Emc-ce-2\test data\2021\RFIC\Chen bei\LAP-C302S-WUSR.EM6 (12) Date: 2021-08-06



Trace: 9  
 Site no : 2#CE Shield Room Data no. : 10  
 Env. / Ins. : Temp:22.8°C Humi:58% Press:101.30kPa LINE Phase : LINE  
 Limit : FCC PART 15B QP  
 Engineer : ZSX  
 EUT : Levoit VeSync Core 300S Plus  
           True HEPA Smart Air Purifier  
 Power : AC 120V/60Hz  
 M/N : LAP-C302S-WUSR  
 Test Mode : TX Mode

	Freq. (MHz)	LISN Factor (dB)	Cable Loss (dB)	Reading (dBuV)	Emission Level (dBuV)	Limits (dBuV)	Margin (dB)	Remark
1	0.1598	9.82	9.69	21.24	40.75	55.47	14.72	Average
2	0.1598	9.82	9.69	35.62	55.13	65.47	10.34	QP
3	0.2106	9.78	9.84	14.68	34.30	53.18	18.88	Average
4	0.2106	9.78	9.84	26.85	46.47	63.18	16.71	QP
5	0.2603	9.73	9.92	7.28	26.93	51.42	24.49	Average
6	0.2603	9.73	9.92	21.33	40.98	61.42	20.44	QP
7	0.3692	9.81	9.92	6.91	26.64	48.52	21.88	Average
8	0.3692	9.81	9.92	17.86	37.59	58.52	20.93	QP
9	8.0198	9.90	10.04	9.57	29.51	50.00	20.49	Average
10	8.0198	9.90	10.04	16.55	36.49	60.00	23.51	QP
11	24.0148	9.83	10.17	11.66	31.66	50.00	18.34	Average
12	24.0148	9.83	10.17	17.75	37.75	60.00	22.25	QP

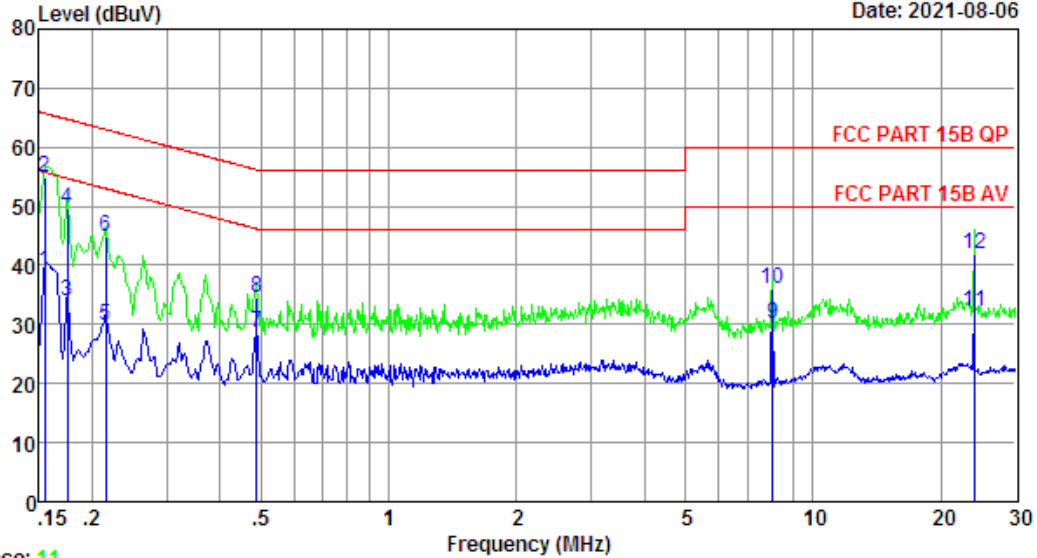
Remarks: 1. Emission Level= LISN Factor + Cable Loss + Reading.  
 2. Margin=Limit - Emission Level.  
 3. If the average limit is met when using a quasi-peak detector,  
 the EUT shall be deemed to meet both limits and measurement  
 with average detector is unnecessary.



# EST Technology

Chilingxiang, Qishantou, Santun,  
Houjie, Dongguan, Guangdong, China  
Tel: +86-769-83081888  
Fax: +86-769-83081878

Data: 12 File: \\Emc-ce-2\test data\2021\RFIC\Chen bei\LAP-C302S-WUSR.EM6 (12) Date: 2021-08-06



Trace: 11  
 Site no : 2#CE Shield Room Data no. : 12  
 Env. / Ins. : Temp:22.8°C Humi:58% Press:101.30kPa LINE Phase : NEUTRAL  
 Limit : FCC PART 15B QP  
 Engineer : ZSX  
 EUT : Levoit VeSync Core 300S Plus  
           True HEPA Smart Air Purifier  
 Power : AC 120V/60Hz  
 M/N : LAP-C302S-WUSR  
 Test Mode : TX Mode

	Freq. (MHz)	LISN Factor (dB)	Cable Loss (dB)	Reading (dBuV)	Emission Level (dBuV)	Limits (dBuV)	Margin (dB)	Remark
1	0.1548	9.78	9.69	19.42	38.89	55.74	16.85	Average
2	0.1548	9.78	9.69	35.32	54.79	65.74	10.95	QP
3	0.1749	9.72	9.77	14.36	33.85	54.72	20.87	Average
4	0.1749	9.72	9.77	30.15	49.64	64.72	15.08	QP
5	0.2151	9.78	9.84	10.22	29.84	53.01	23.17	Average
6	0.2151	9.78	9.84	25.33	44.95	63.01	18.06	QP
7	0.4889	9.76	9.92	8.92	28.60	46.19	17.59	Average
8	0.4889	9.76	9.92	14.77	34.45	56.19	21.74	QP
9	8.0198	10.06	10.04	9.90	30.00	50.00	20.00	Average
10	8.0198	10.06	10.04	15.77	35.87	60.00	24.13	QP
11	24.0148	10.20	10.17	11.80	32.17	50.00	17.83	Average
12	24.0148	10.20	10.17	21.41	41.78	60.00	18.22	QP

Remarks: 1. Emission Level= LISN Factor + Cable Loss + Reading.  
 2. Margin=Limit - Emission Level.  
 3. If the average limit is met when using a quasi-peak detector, the EUT shall be deemed to meet both limits and measurement with average detector is unnecessary.

## 5. TEST SETUP PHOTO

Conducted Test



**Radiated Test (Below 1GHz)**



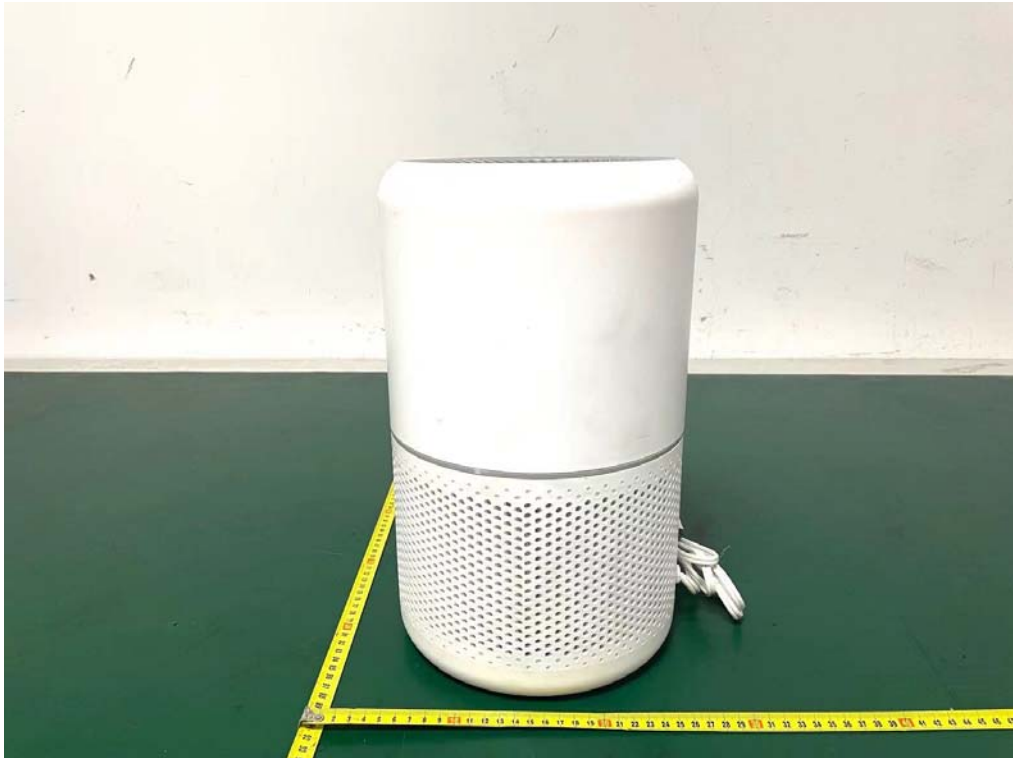
## 6. EUT PHOTO

**External Photos**  
M/N: LAP-C302S-WUSR

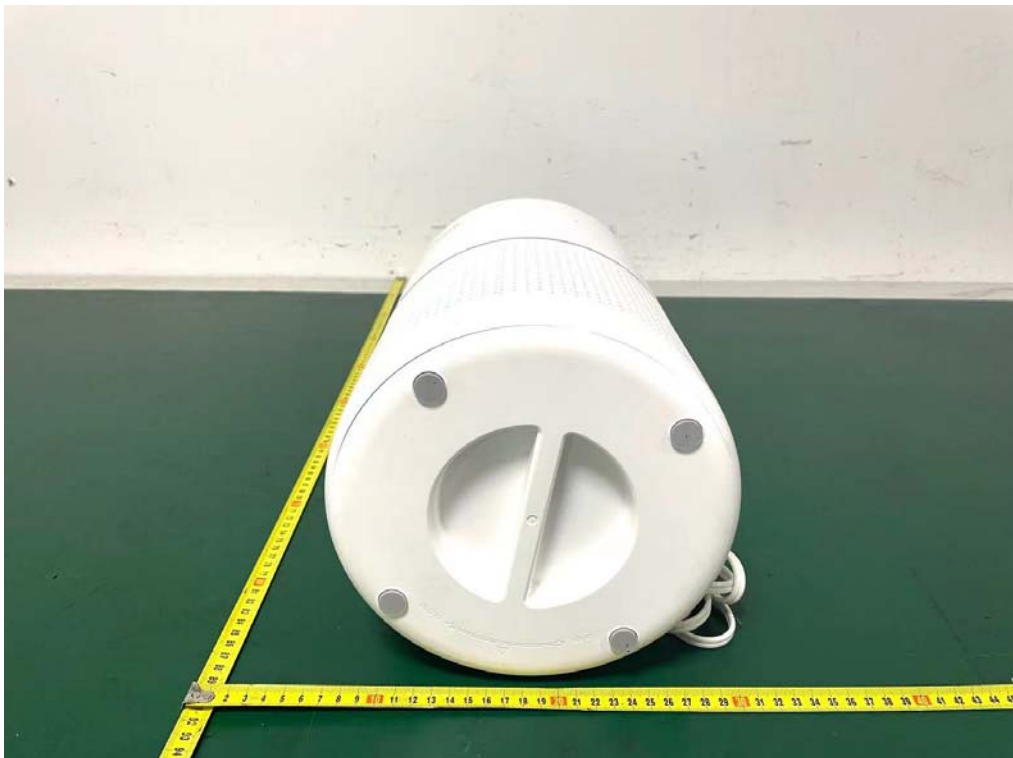




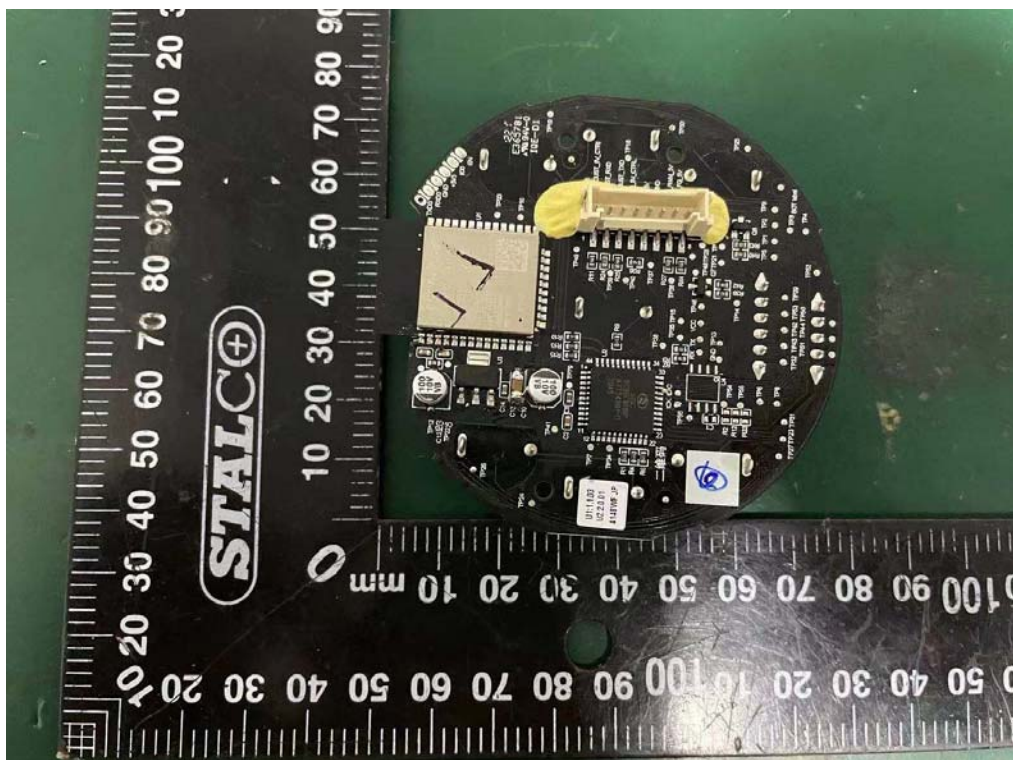
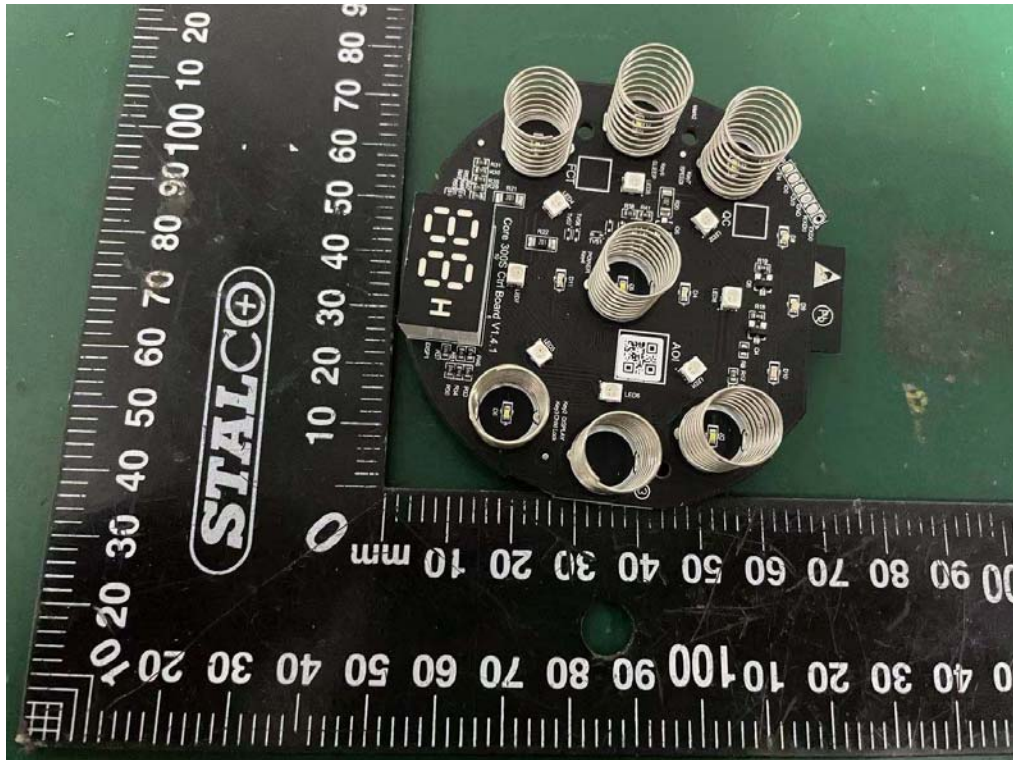
**External Photos**  
M/N: LAP-C302S-WUSR



**External Photos**  
M/N: LAP-C302S-WUSR

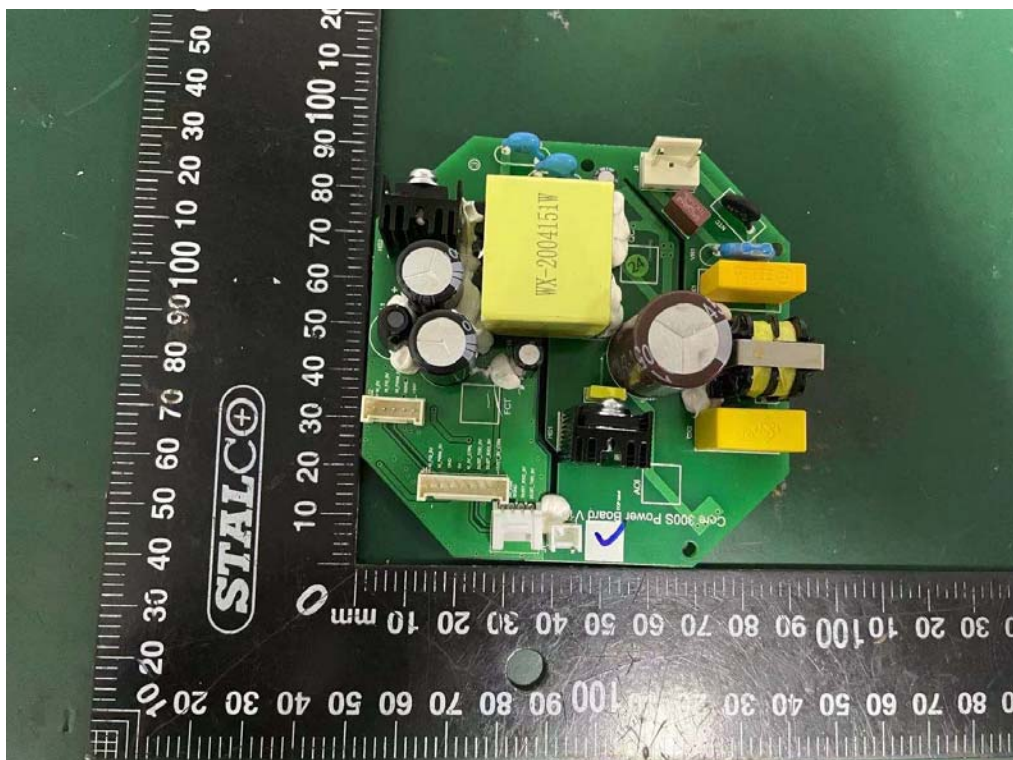
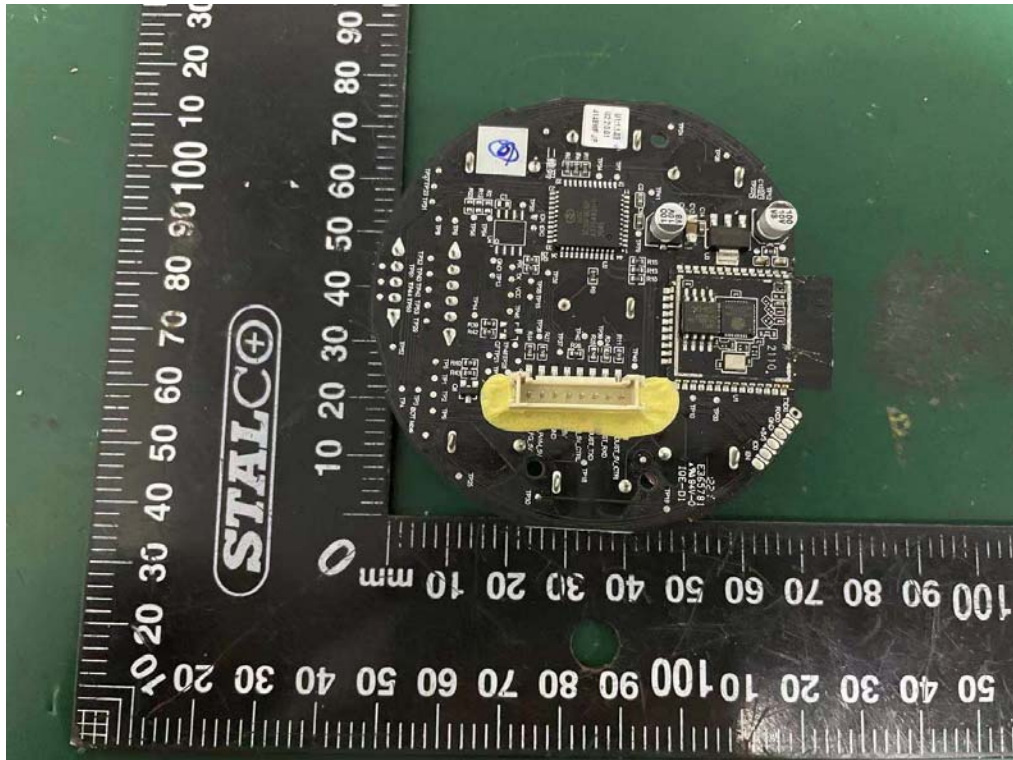


**Internal Photos**  
M/N: LAP-C302S-WUSR

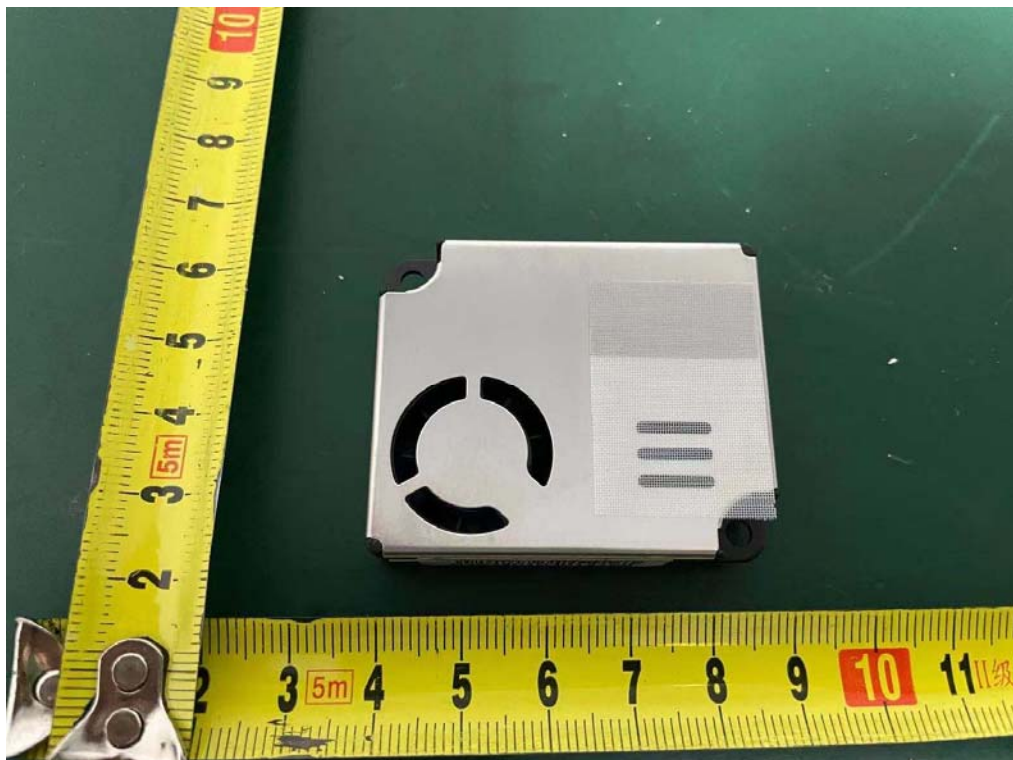
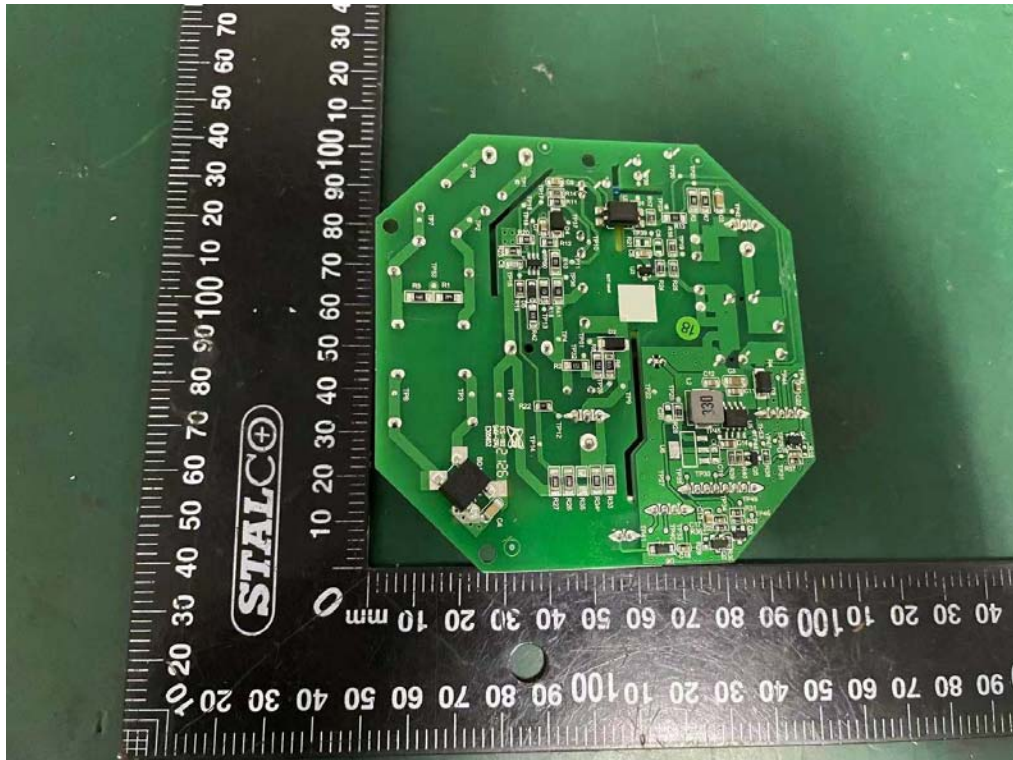




**Internal Photos**  
M/N: LAP-C302S-WUSR

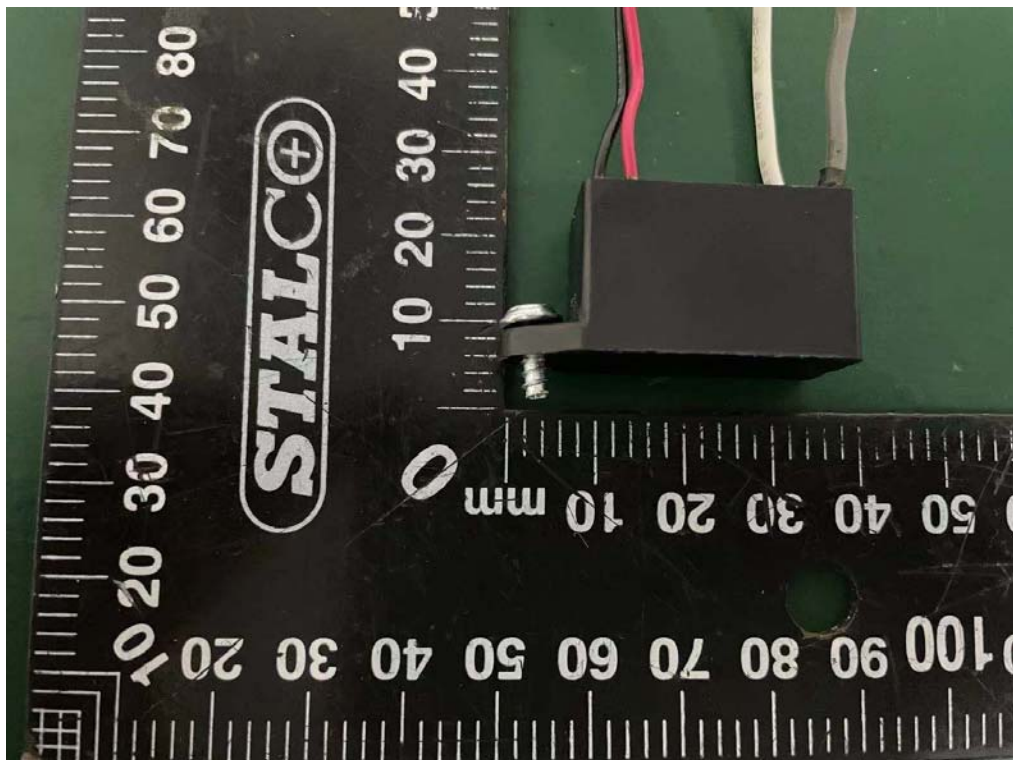
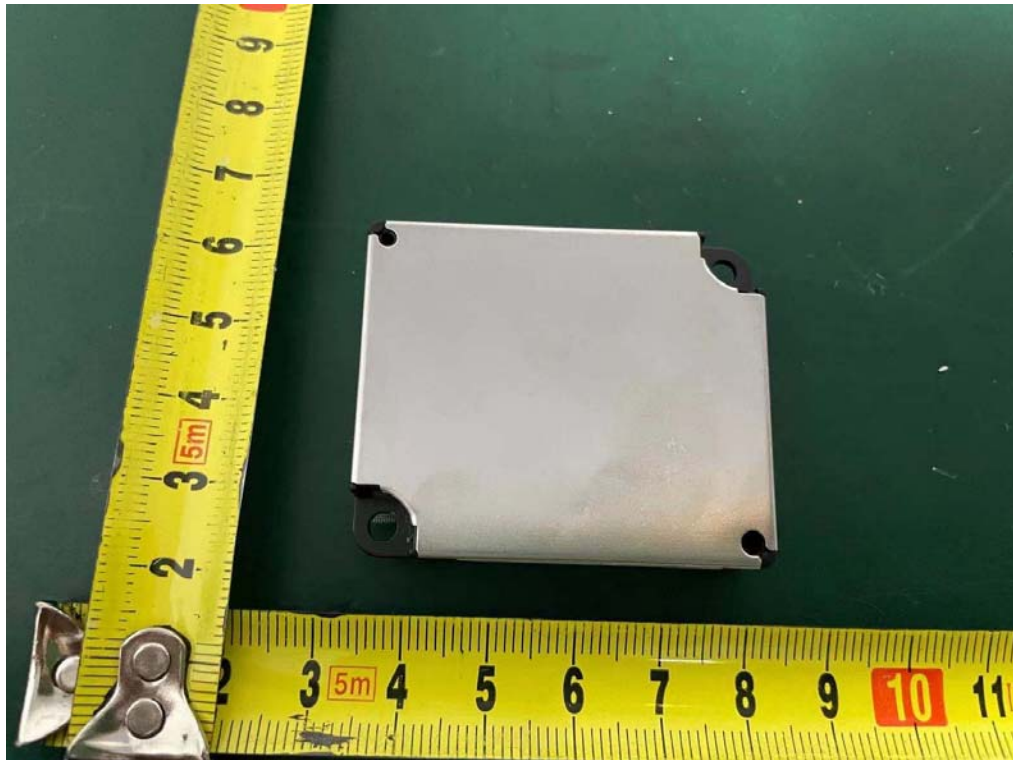


**Internal Photos**  
M/N: LAP-C302S-WUSR

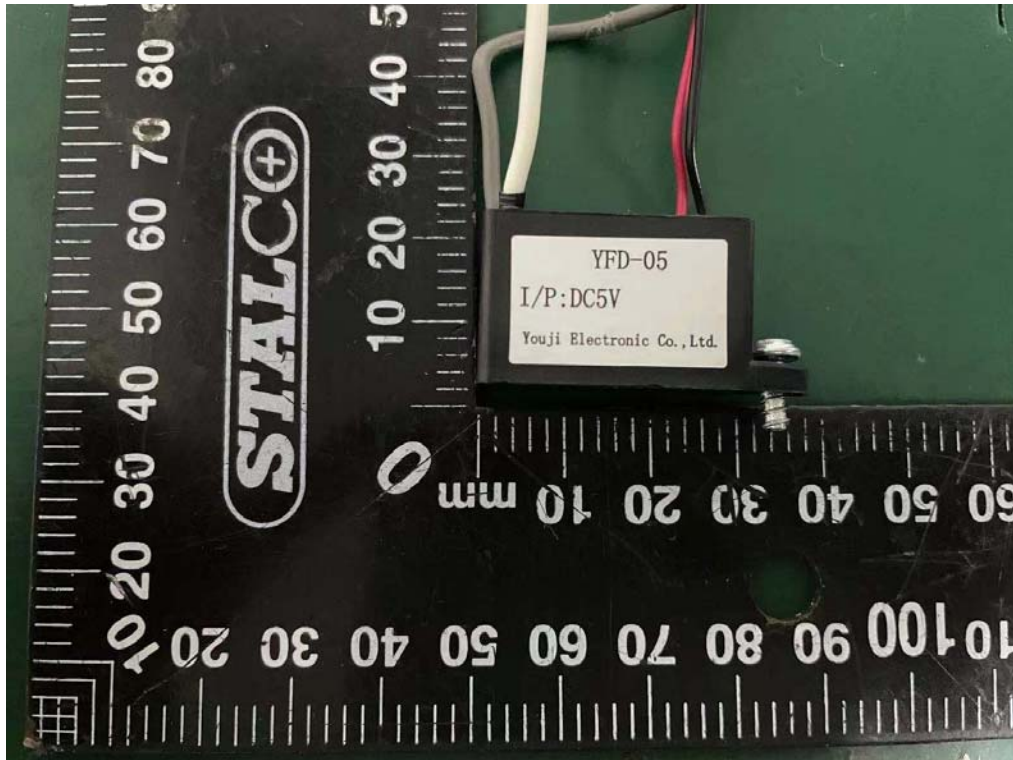




**Internal Photos**  
M/N: LAP-C302S-WUSR

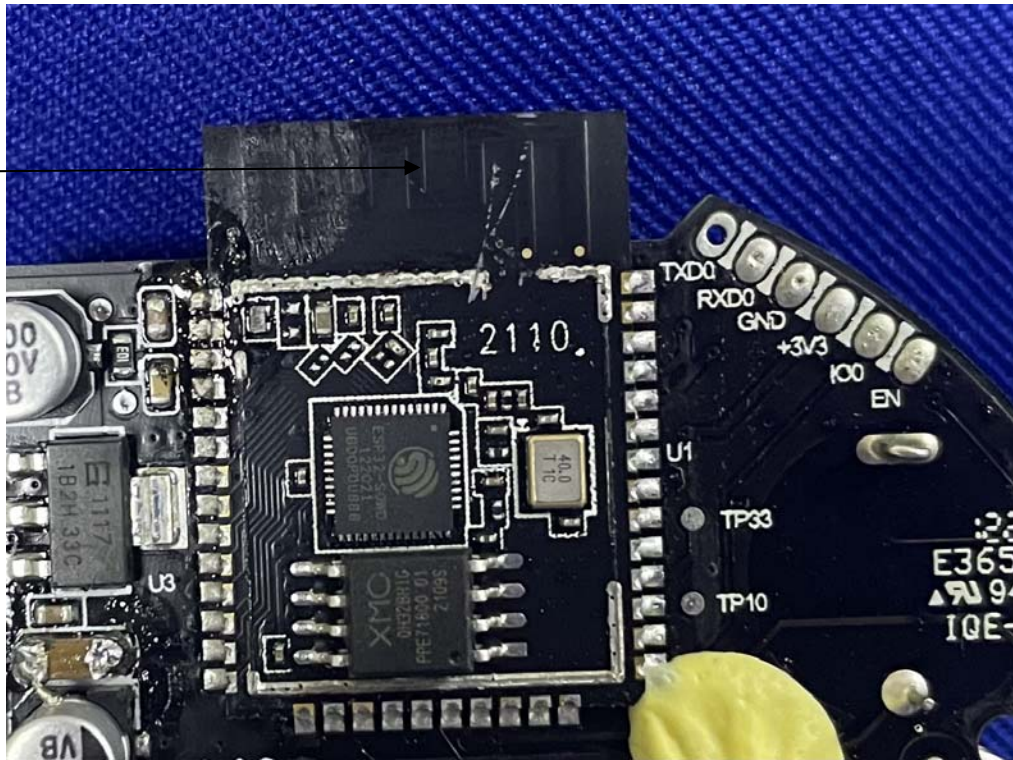


**Internal Photos**  
M/N: LAP-C302S-WUSR



**Internal Photos**  
M/N: LAP-C302S-WUSR

Bluetooth  
Antenna



**End of Test Report**