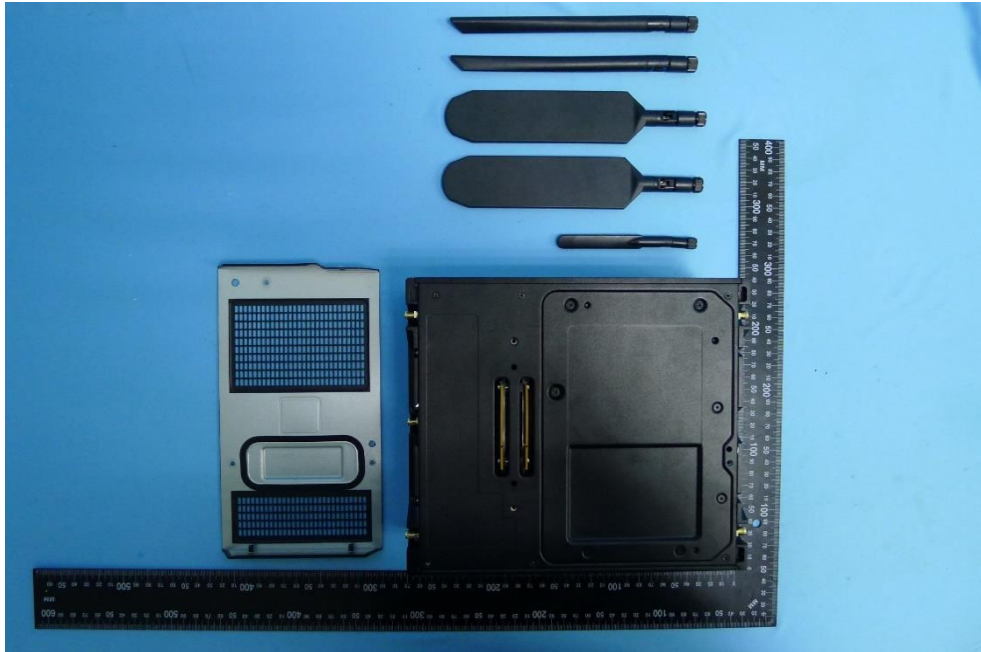


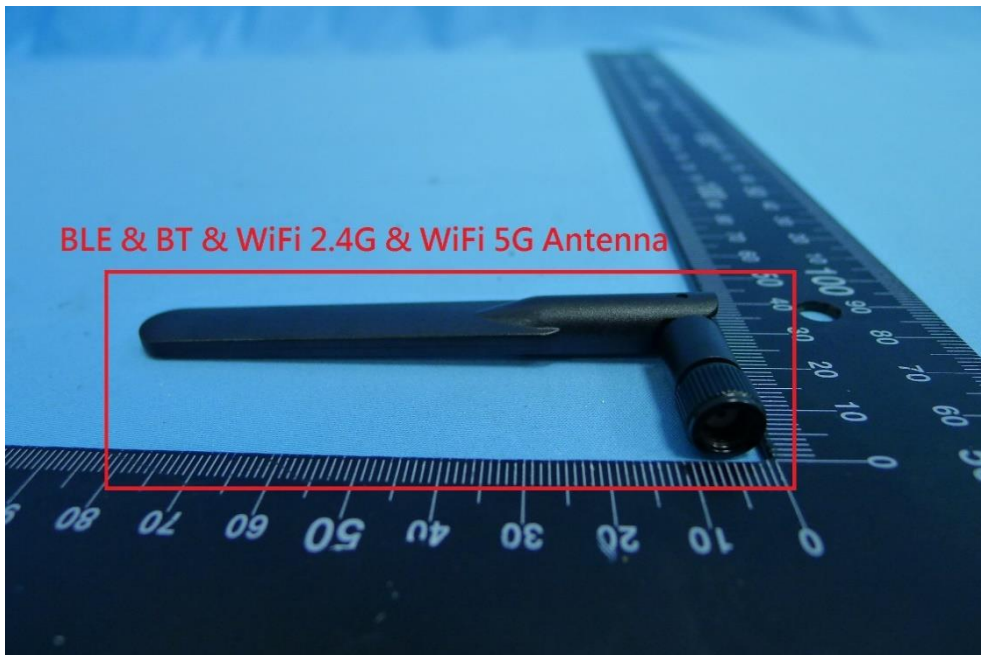
Product: LTE Module
Brand Name: Hewlett Packard Enterprise
Model Number: EL300_EM75L
Report No.: 1808TW5101-U10~U11

Internal Photograph

(1) EUT Photo



(2) EUT Photo



Product: LTE Module
Brand Name: Hewlett Packard Enterprise
Model Number: EL300_EM75L
Report No.: 1808TW5101-U10~U11

(3) EUT Photo

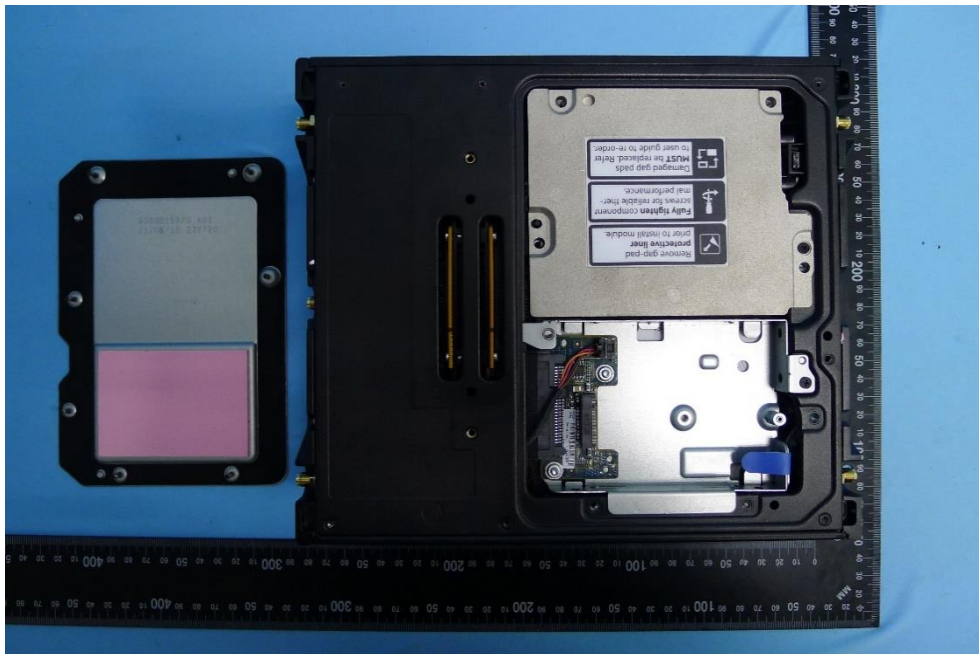


(4) EUT Photo

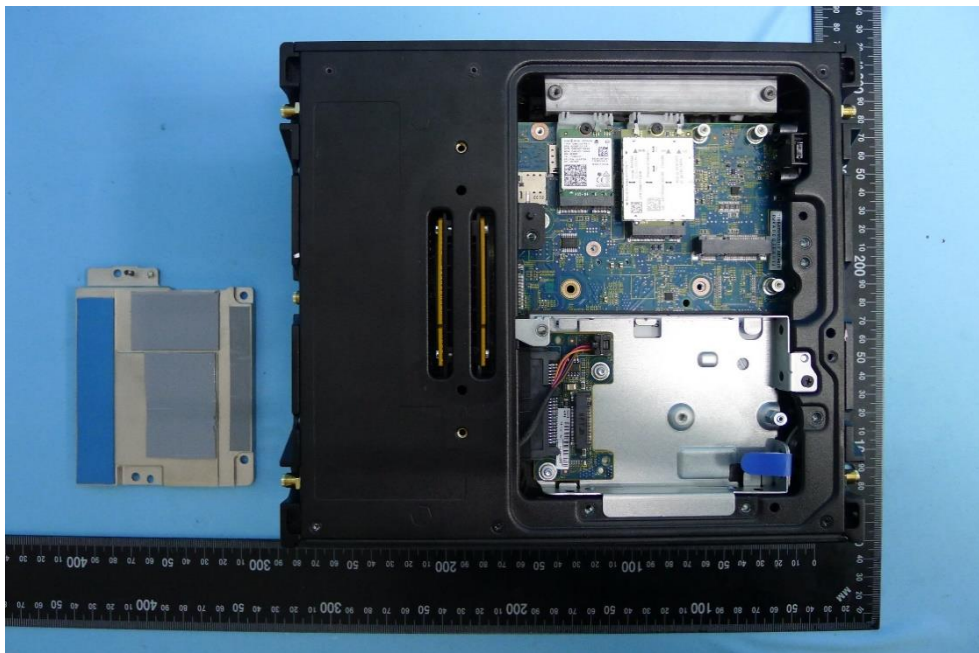


Product: LTE Module
Brand Name: Hewlett Packard Enterprise
Model Number: EL300_EM75L
Report No.: 1808TW5101-U10~U11

(5) EUT Photo

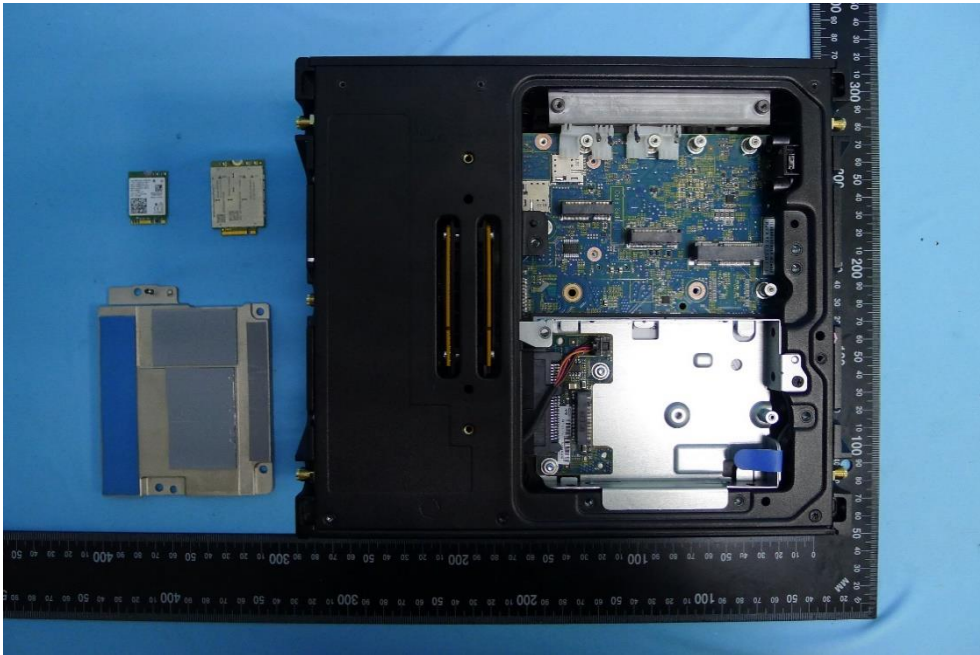


(6) EUT Photo

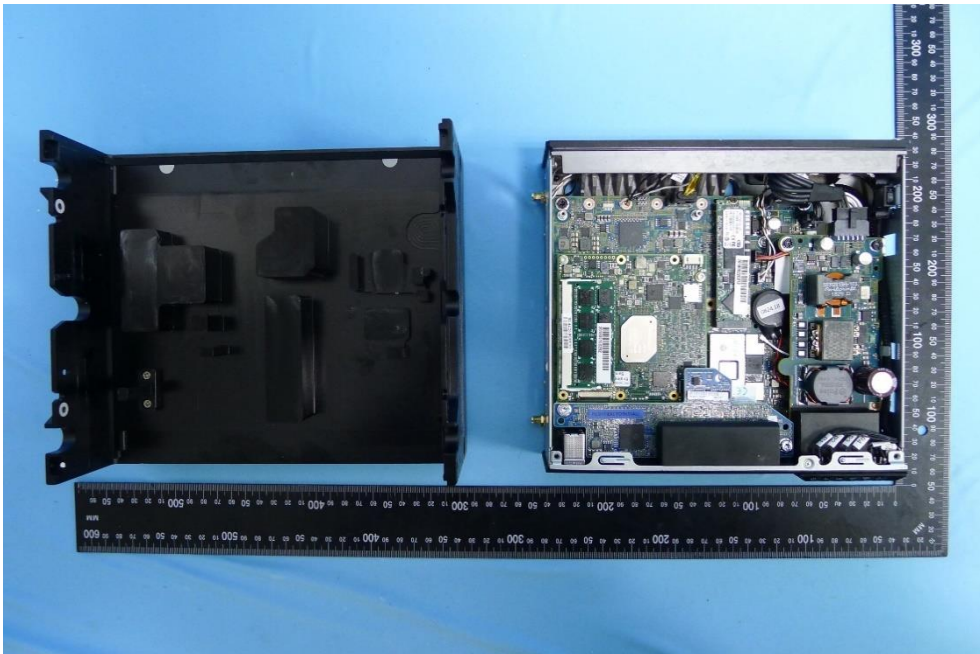


Product: LTE Module
Brand Name: Hewlett Packard Enterprise
Model Number: EL300_EM75L
Report No.: 1808TW5101-U10~U11

(7) EUT Photo

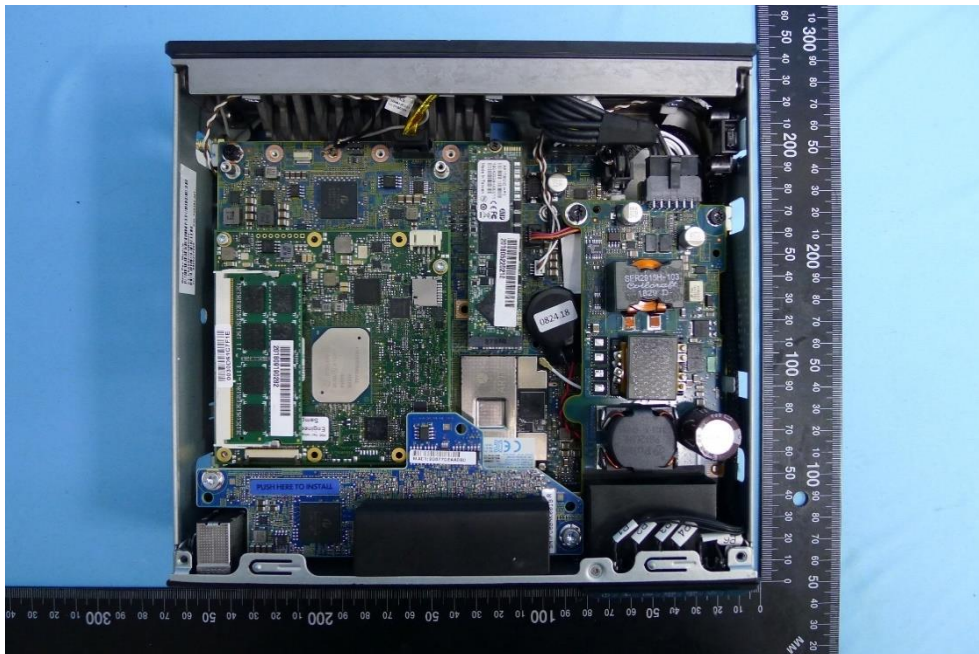


(8) EUT Photo

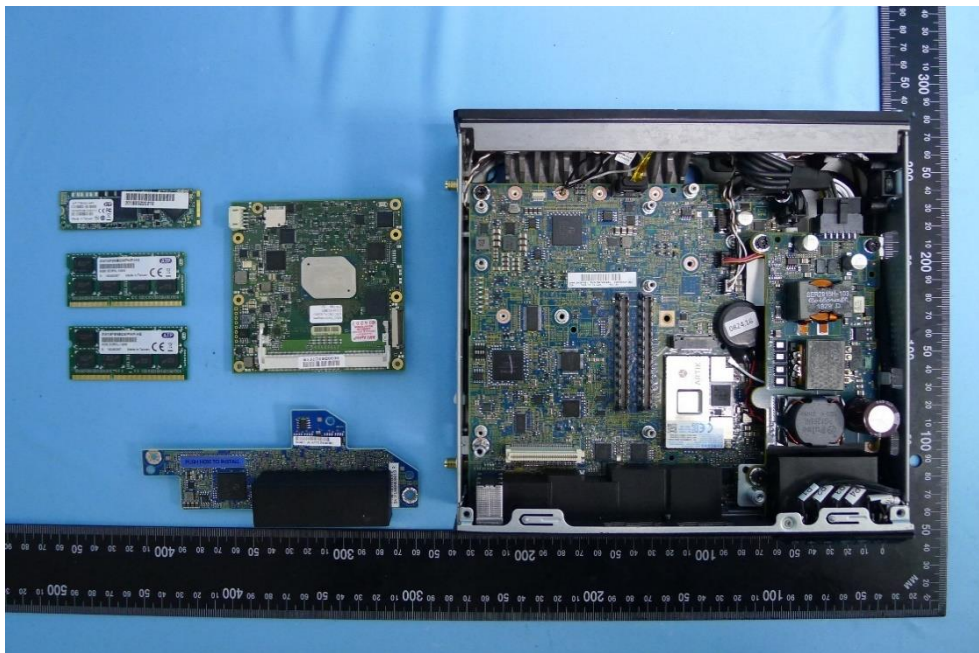


Product: LTE Module
Brand Name: Hewlett Packard Enterprise
Model Number: EL300_EM75L
Report No.: 1808TW5101-U10~U11

(9) EUT Photo

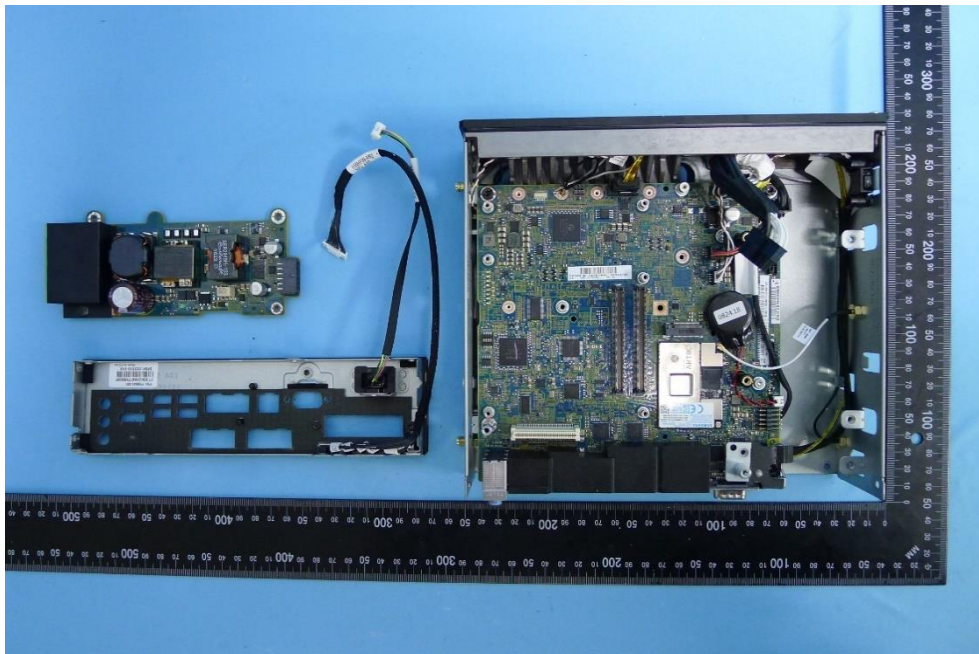


(10) EUT Photo

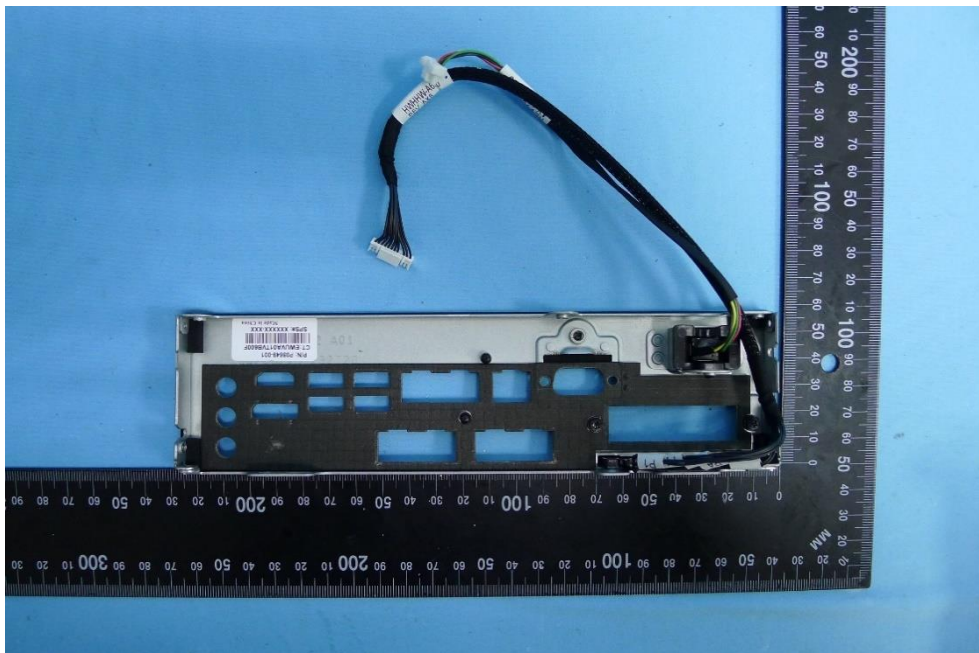


Product: LTE Module
Brand Name: Hewlett Packard Enterprise
Model Number: EL300_EM75L
Report No.: 1808TW5101-U10~U11

(11) EUT Photo

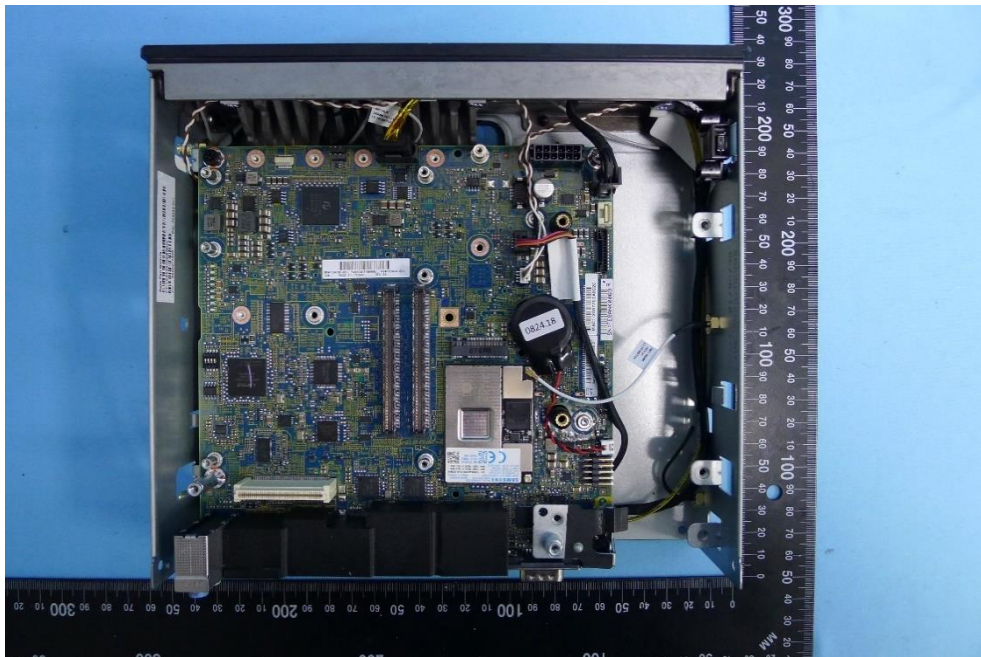


(12) EUT Photo

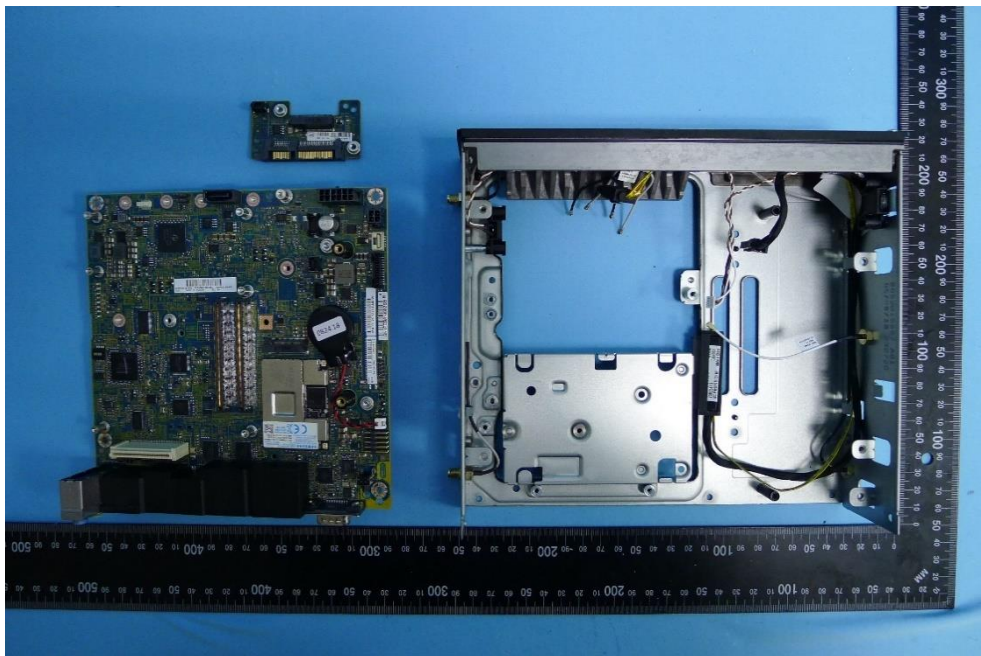


Product: LTE Module
Brand Name: Hewlett Packard Enterprise
Model Number: EL300_EM75L
Report No.: 1808TW5101-U10~U11

(13) EUT Photo

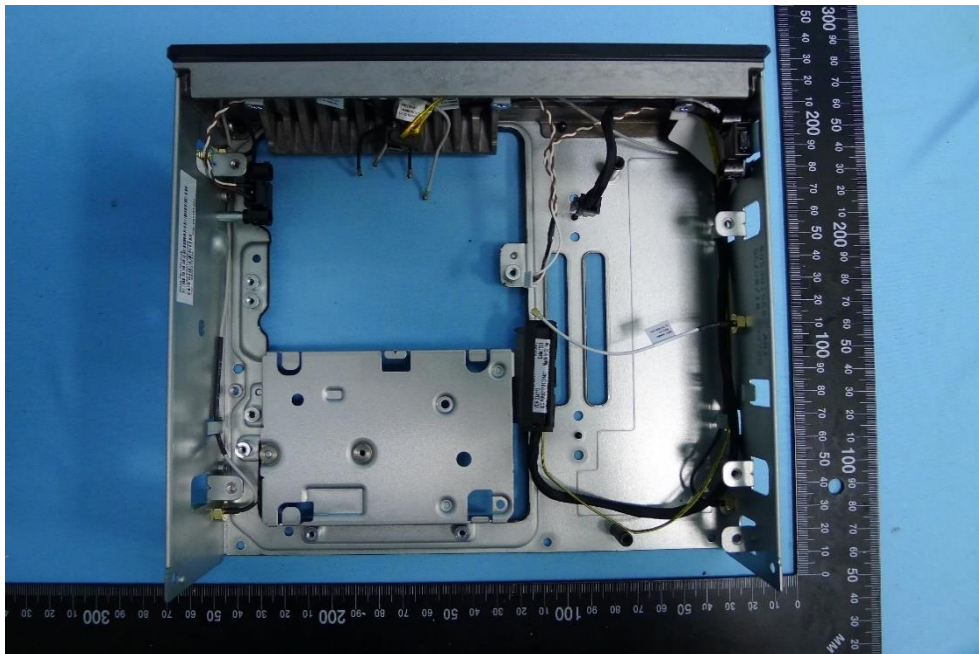


(14) EUT Photo

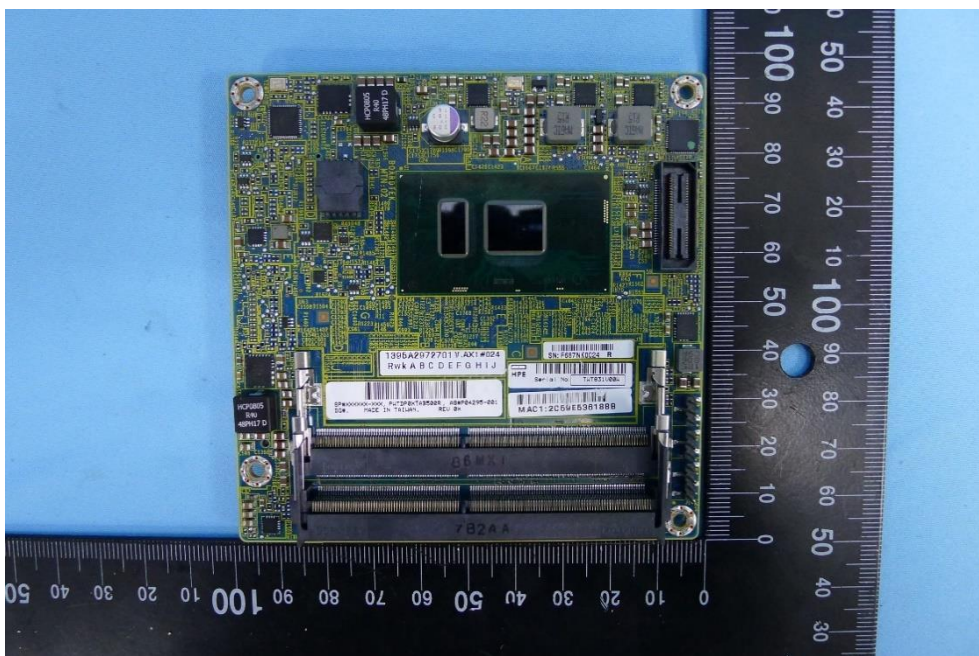


Product: LTE Module
Brand Name: Hewlett Packard Enterprise
Model Number: EL300_EM75L
Report No.: 1808TW5101-U10~U11

(15) EUT Photo



(16) CPU Board (Intel i5 7300U)

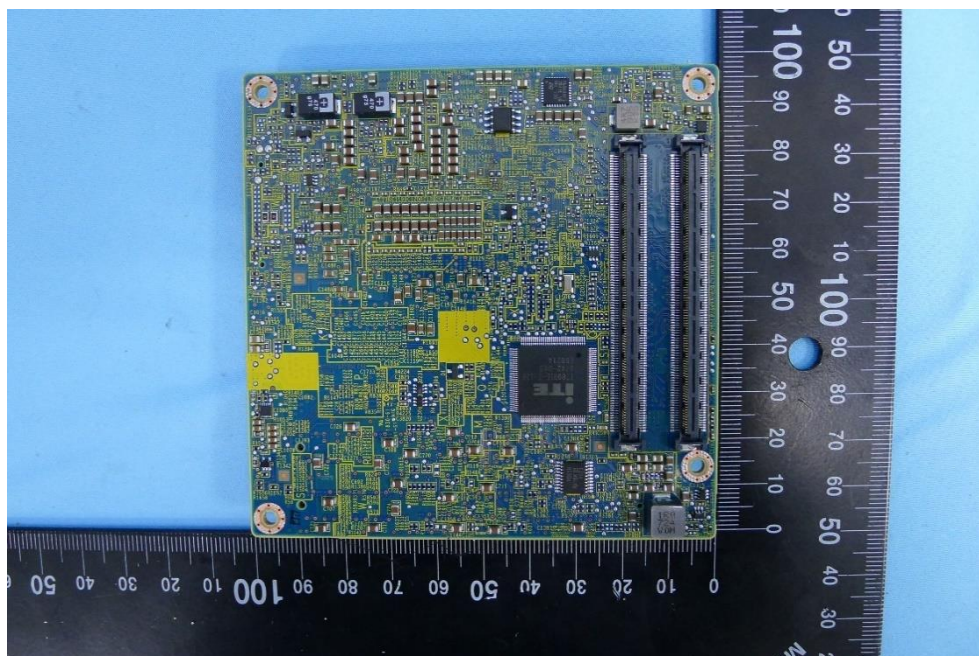


Product: LTE Module
Brand Name: Hewlett Packard Enterprise
Model Number: EL300_EM75L
Report No.: 1808TW5101-U10~U11

(17) CPU Board (Intel i5 7300U)

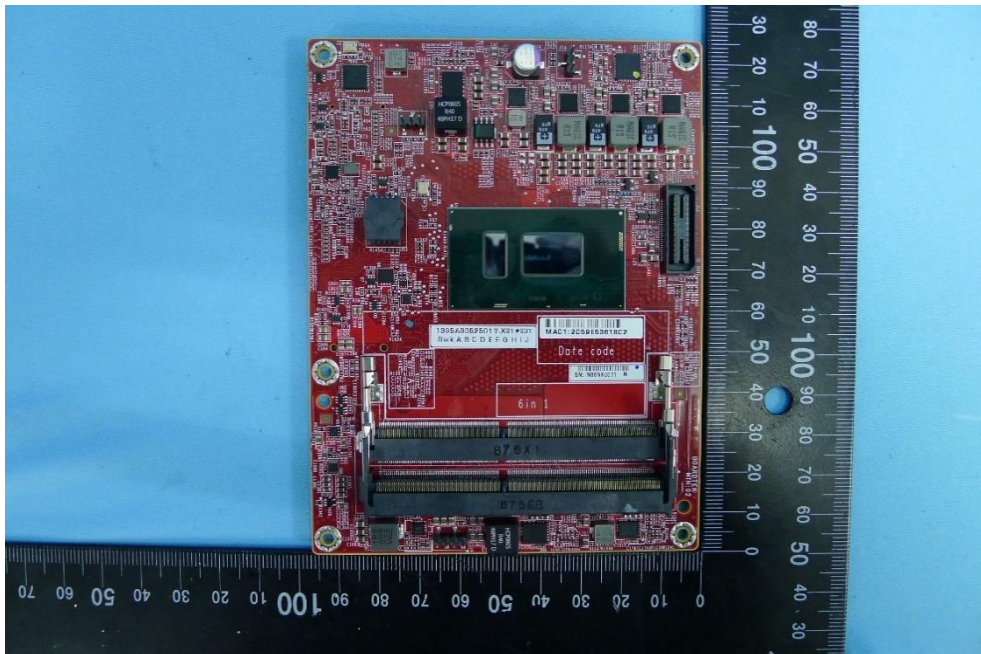


(18) CPU Board (Intel i5 7300U)



Product: LTE Module
Brand Name: Hewlett Packard Enterprise
Model Number: EL300_EM75L
Report No.: 1808TW5101-U10~U11

(19) CPU Board (Intel i7 8650U)

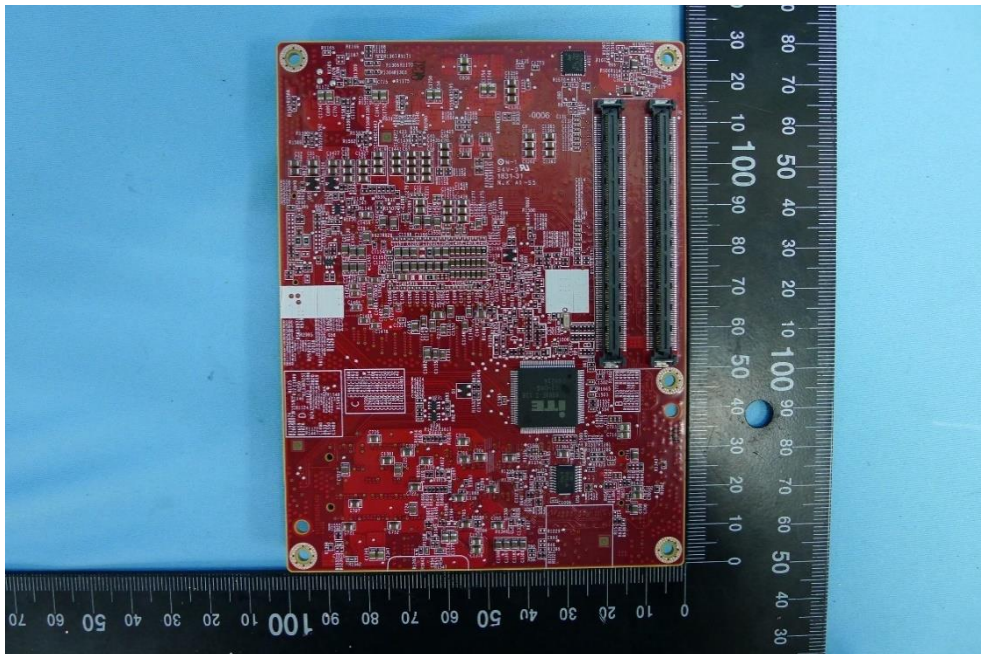


(20) CPU Board (Intel i7 8650U)

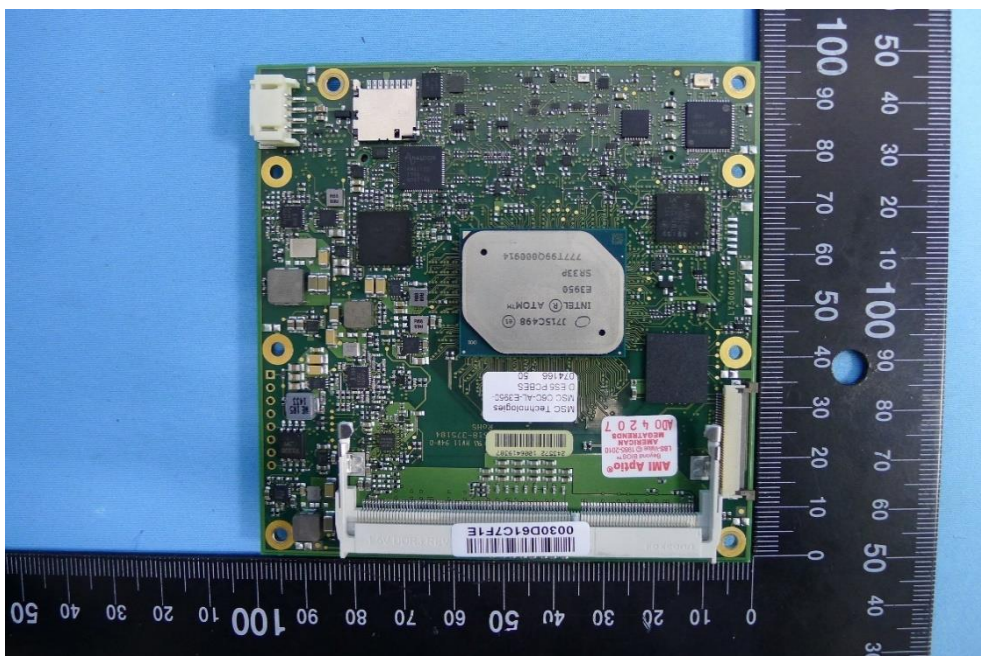


Product: LTE Module
Brand Name: Hewlett Packard Enterprise
Model Number: EL300_EM75L
Report No.: 1808TW5101-U10~U11

(21) CPU Board (Intel i7 8650U)



(22) CPU Board (Intel Atom E3950)

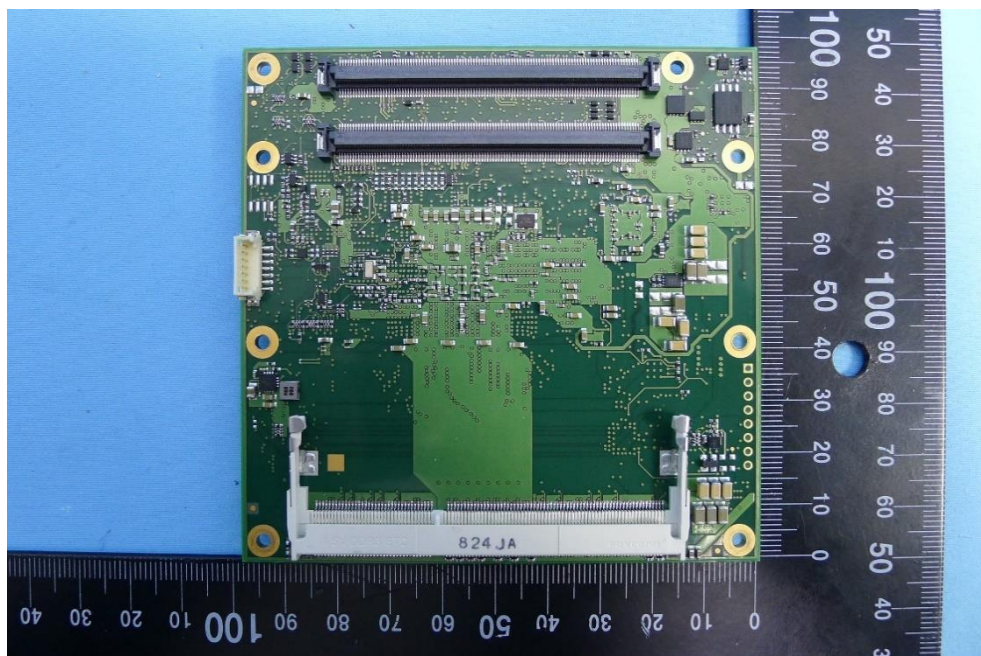


Product: LTE Module
Brand Name: Hewlett Packard Enterprise
Model Number: EL300_EM75L
Report No.: 1808TW5101-U10~U11

(23) CPU Board (Intel Atom E3950)

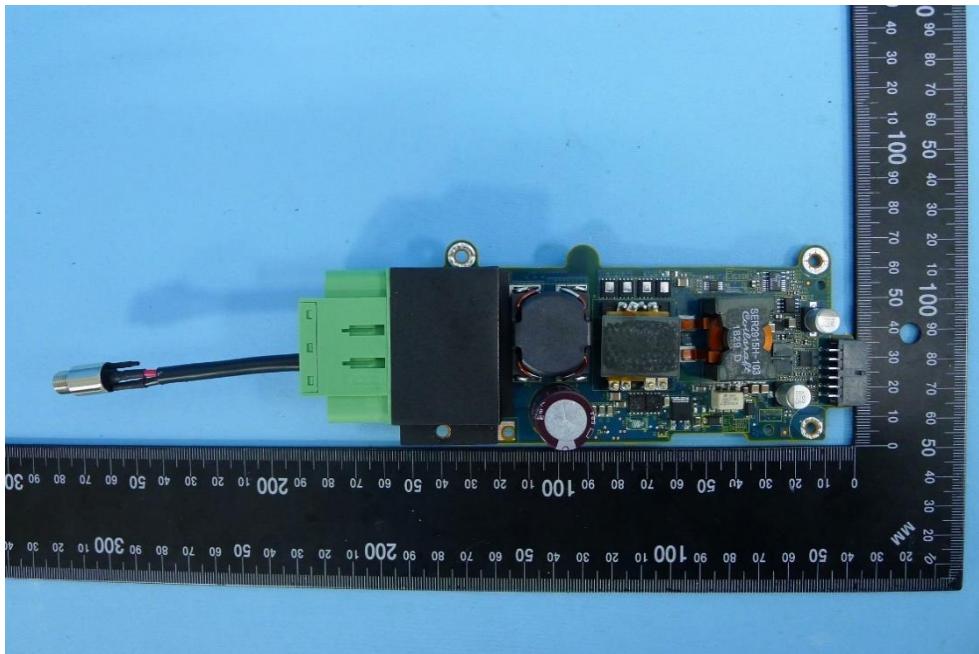


(24) CPU Board (Intel Atom E3950)

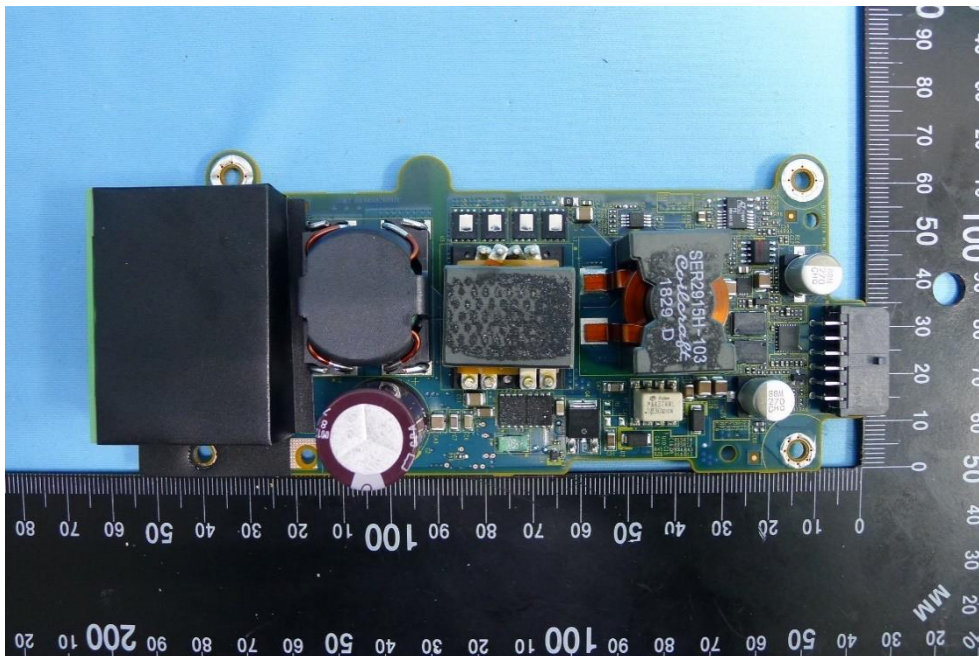


Product: LTE Module
Brand Name: Hewlett Packard Enterprise
Model Number: EL300_EM75L
Report No.: 1808TW5101-U10~U11

(25) DC Power Board (1395A2968901)

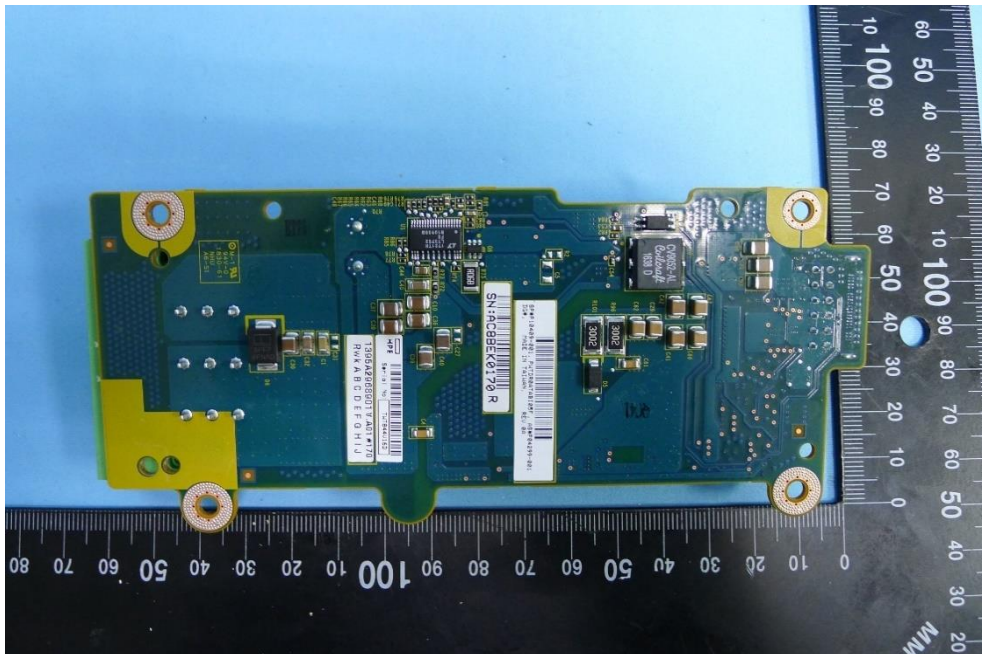


(26) DC Power Board (1395A2968901)

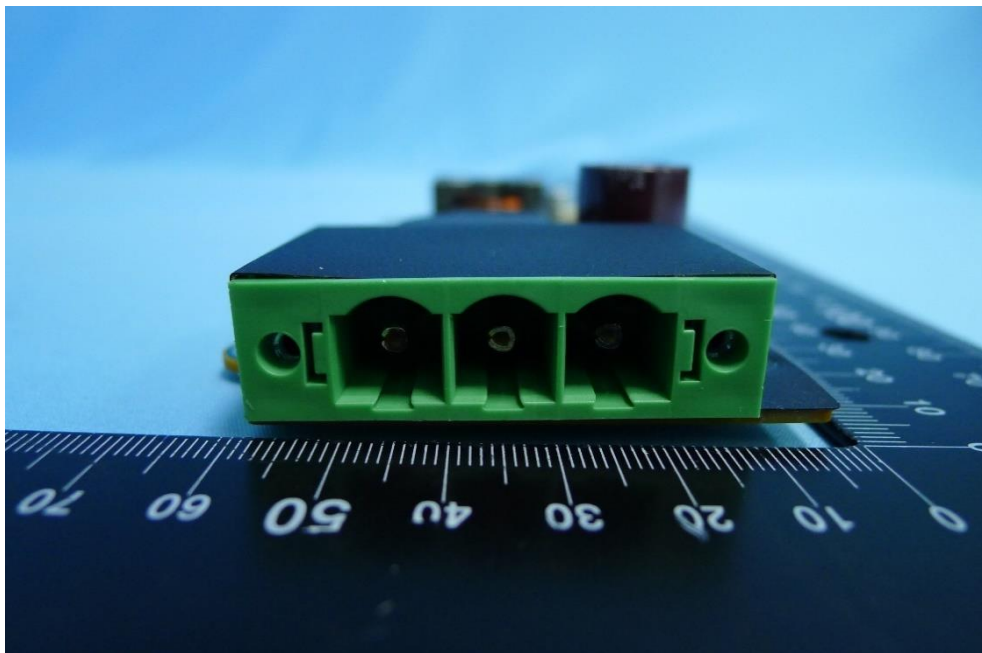


Product: LTE Module
Brand Name: Hewlett Packard Enterprise
Model Number: EL300_EM75L
Report No.: 1808TW5101-U10~U11

(27) DC Power Board (1395A2968901)

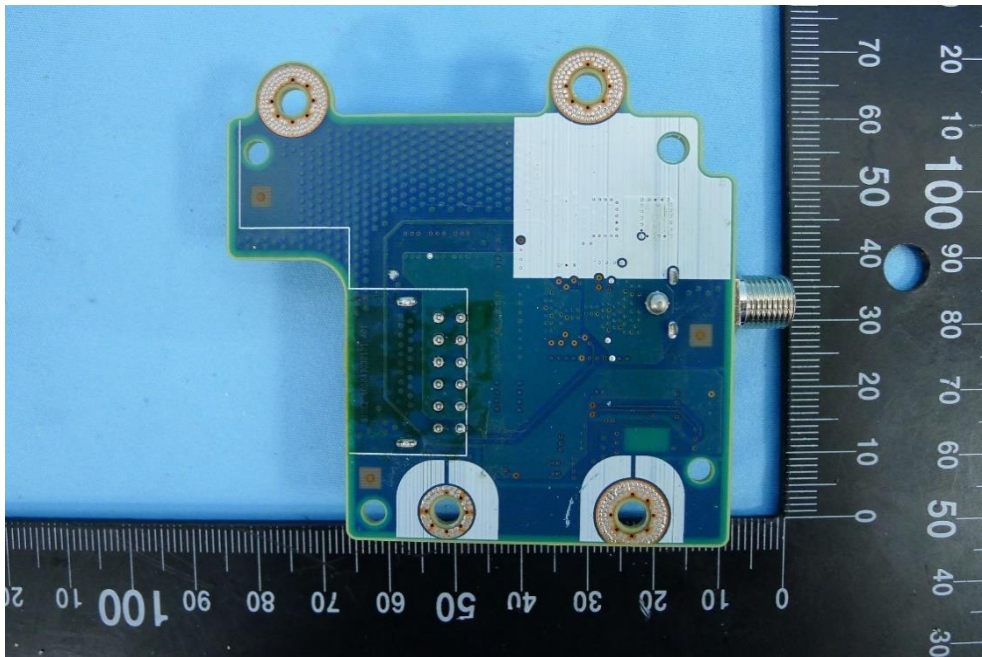


(28) DC Power Board (1395A2968901)

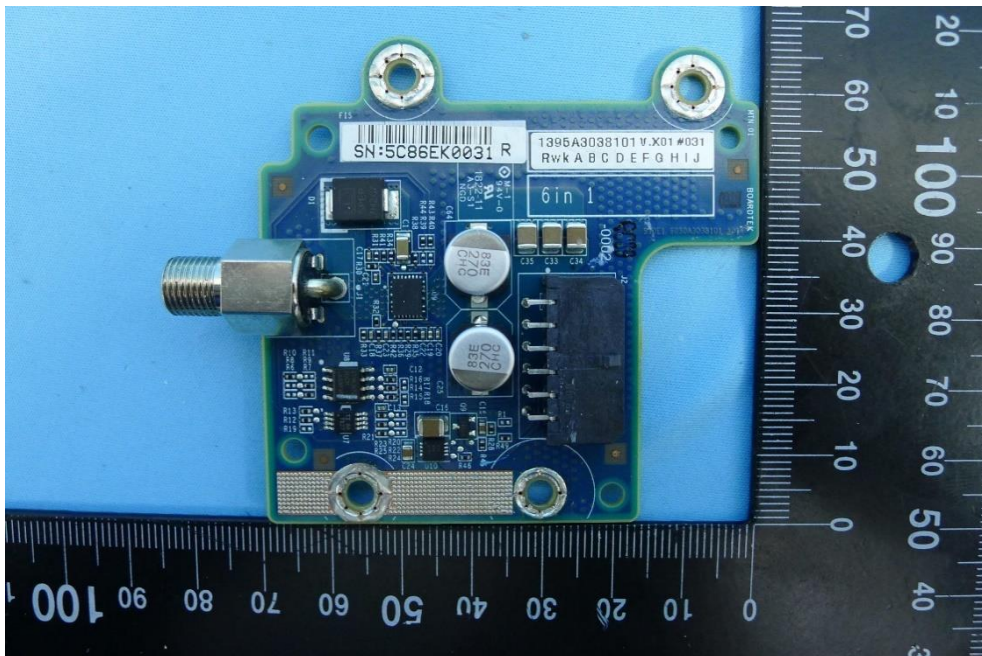


Product: LTE Module
Brand Name: Hewlett Packard Enterprise
Model Number: EL300_EM75L
Report No.: 1808TW5101-U10~U11

(29) DC Power Board (1395A3038101)

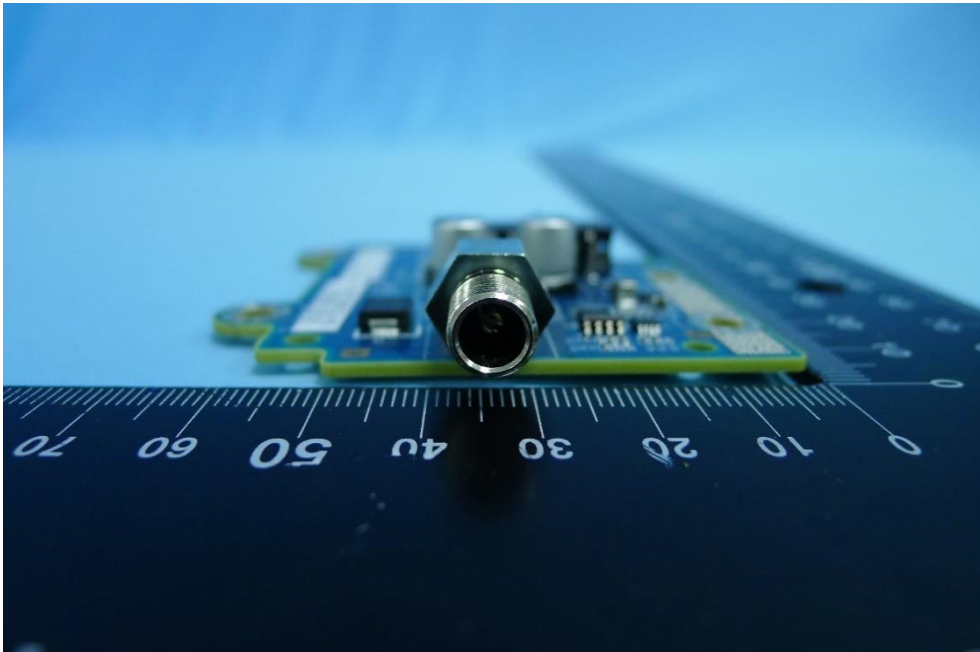


(30) DC Power Board (1395A3038101)

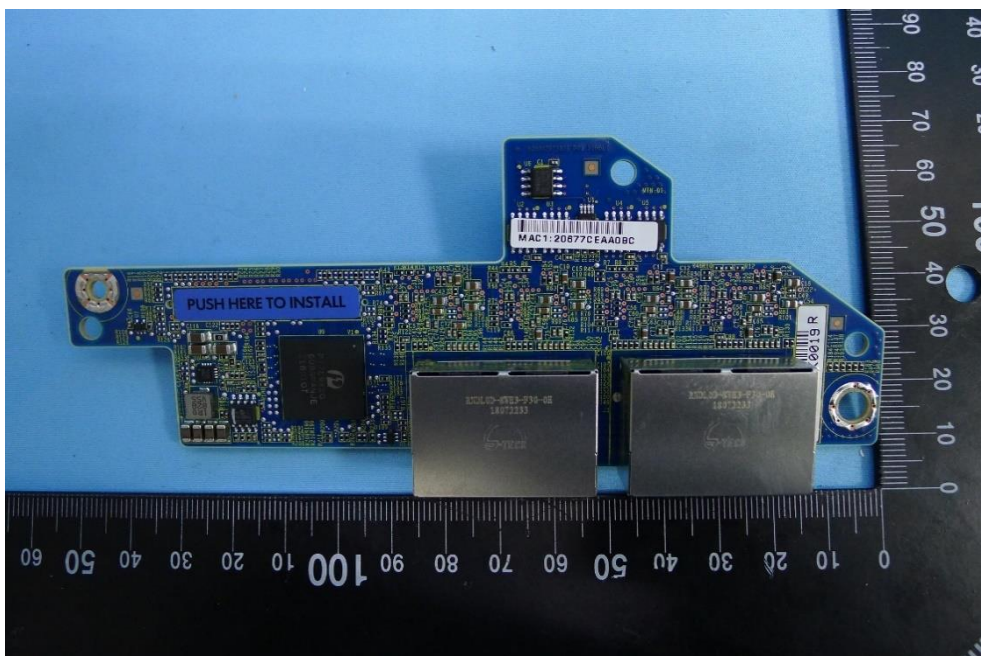


Product: LTE Module
Brand Name: Hewlett Packard Enterprise
Model Number: EL300_EM75L
Report No.: 1808TW5101-U10~U11

(31) DC Power Board (1395A3038101)

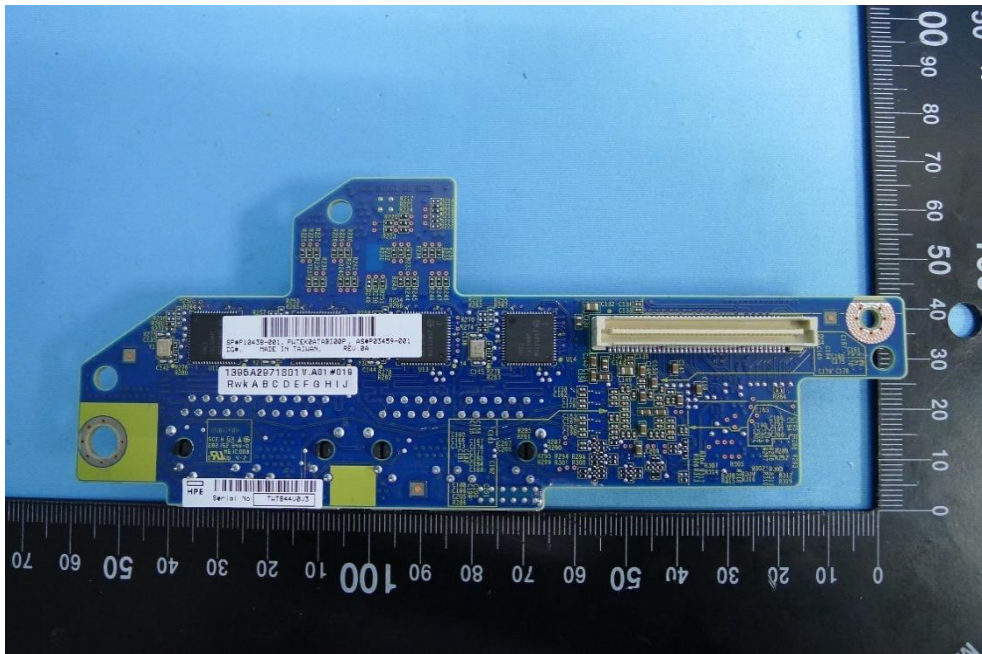


(32) IO Board: Lan Card (1395A2971801V)

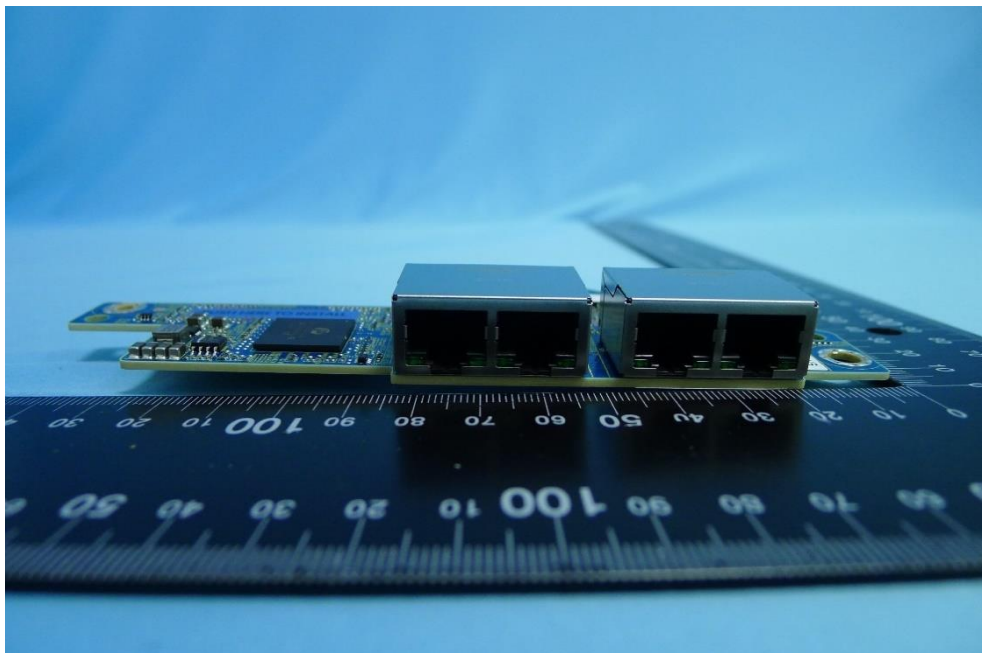


Product: LTE Module
Brand Name: Hewlett Packard Enterprise
Model Number: EL300_EM75L
Report No.: 1808TW5101-U10~U11

(33) IO Board: Lan Card (1395A2971801V)

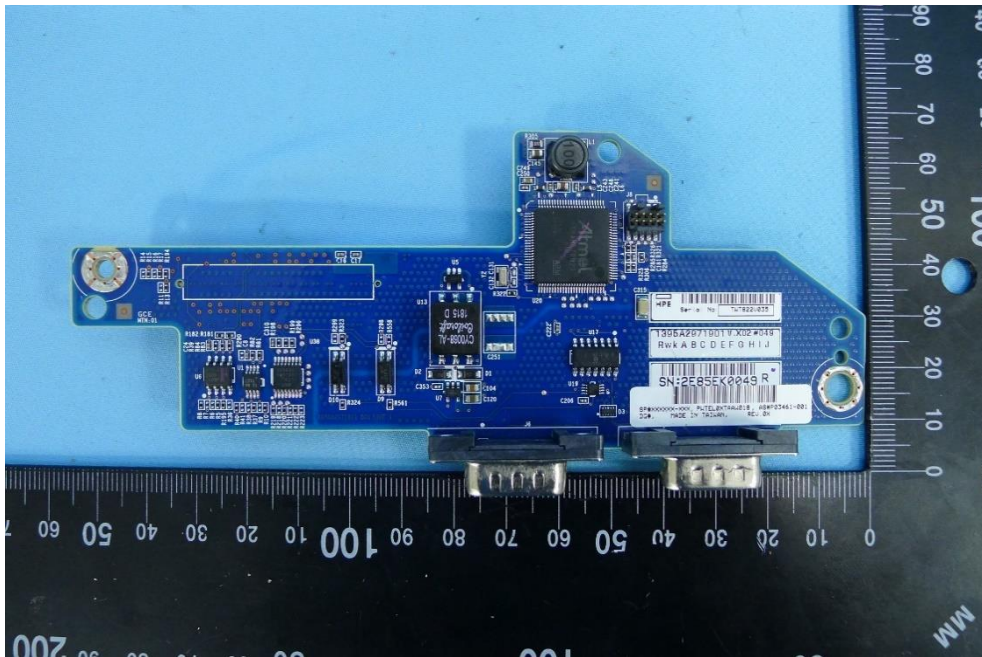


(34) IO Board: Lan Card (1395A2971801V)

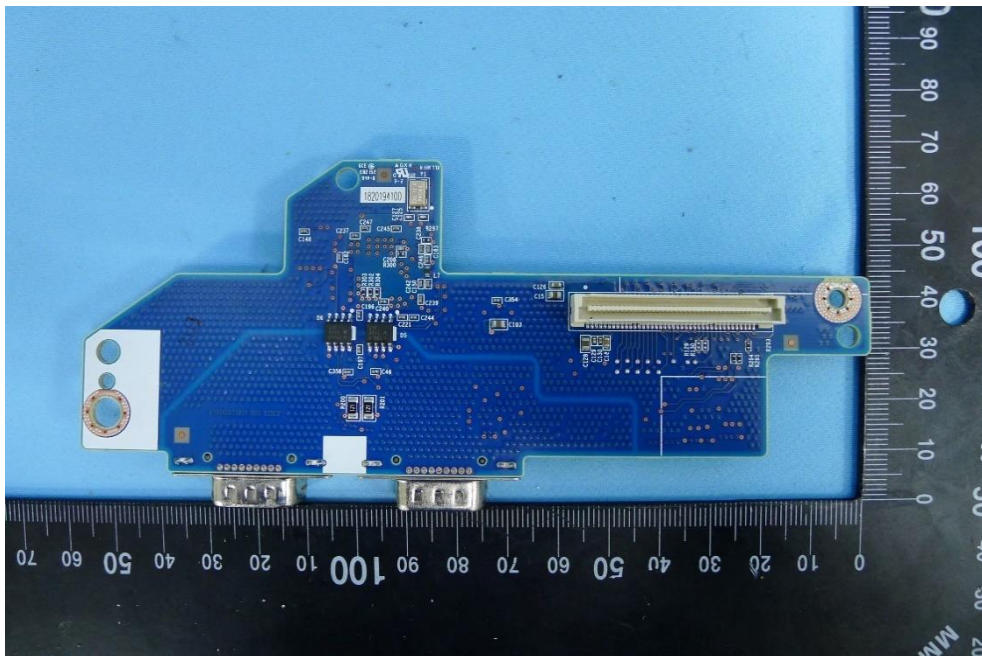


Product: LTE Module
Brand Name: Hewlett Packard Enterprise
Model Number: EL300_EM75L
Report No.: 1808TW5101-U10~U11

(35) IO Board: Canbus Card (1395A2971901)

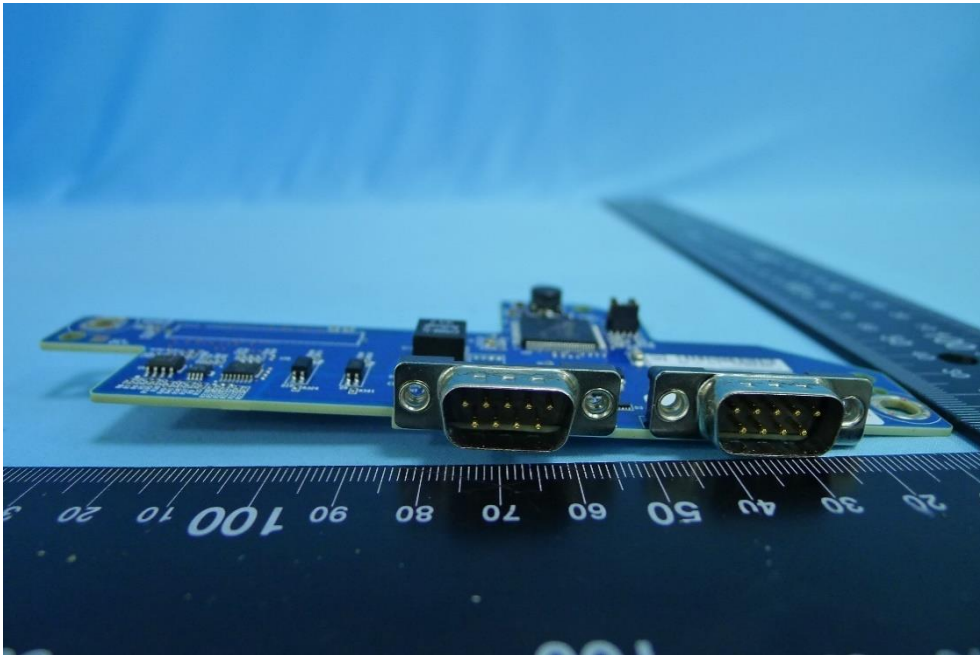


(36) IO Board: Canbus Card (1395A2971901)

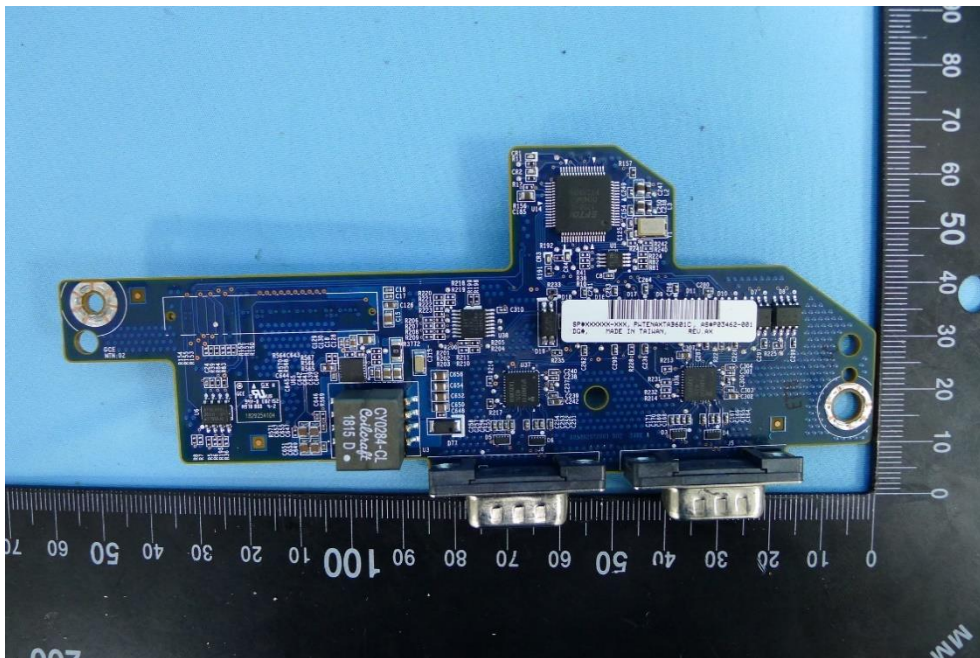


Product: LTE Module
Brand Name: Hewlett Packard Enterprise
Model Number: EL300_EM75L
Report No.: 1808TW5101-U10~U11

(37) IO Board: Canbus Card (1395A2971901)

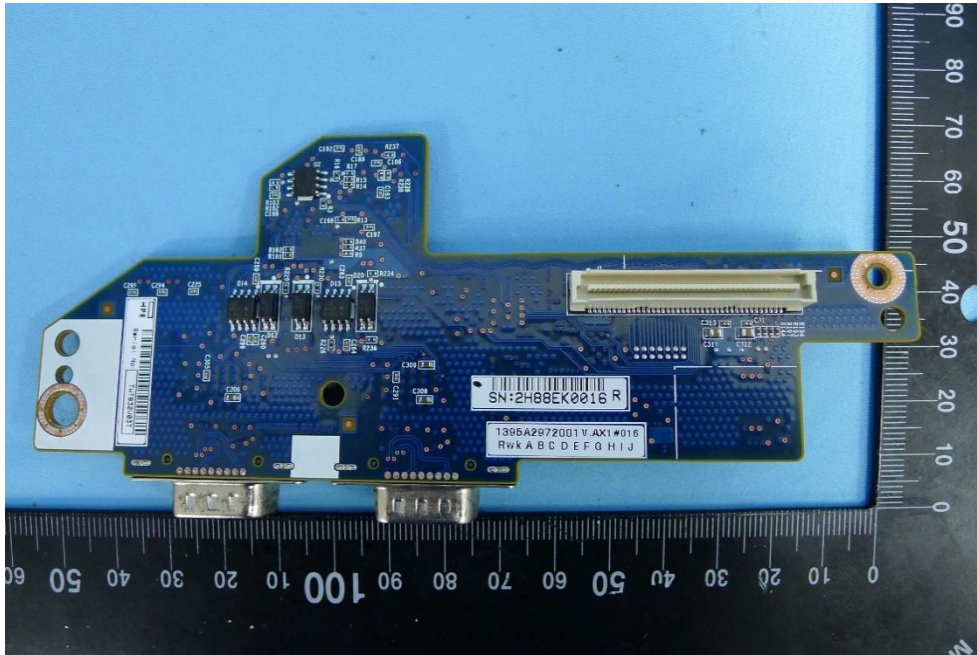


(38) IO Board: RS-232 Card (1395A2972001)

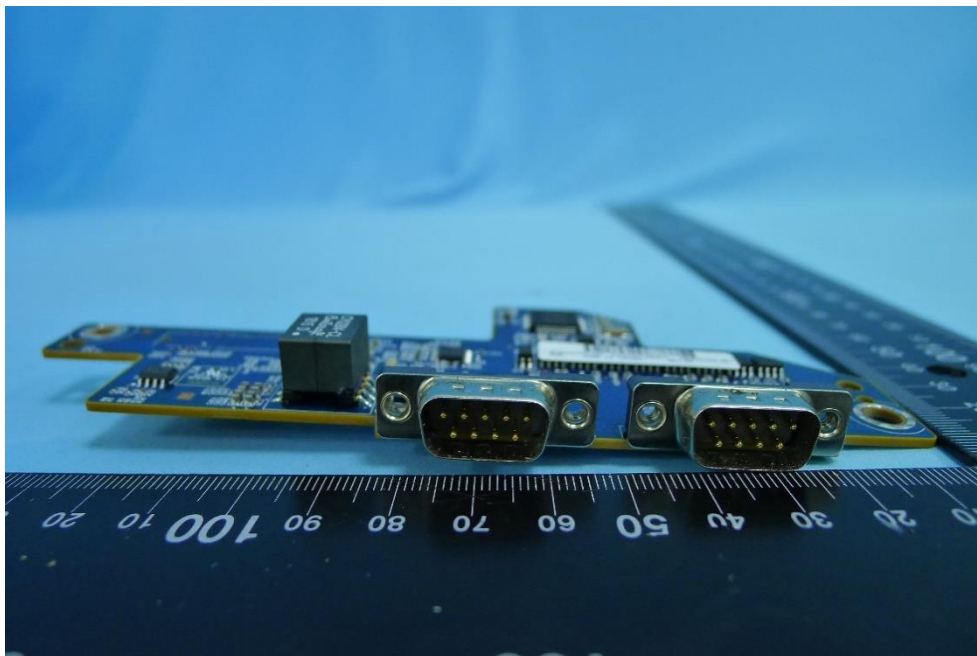


Product: LTE Module
Brand Name: Hewlett Packard Enterprise
Model Number: EL300_EM75L
Report No.: 1808TW5101-U10~U11

(39) IO Board: RS-232 Card (1395A2972001)

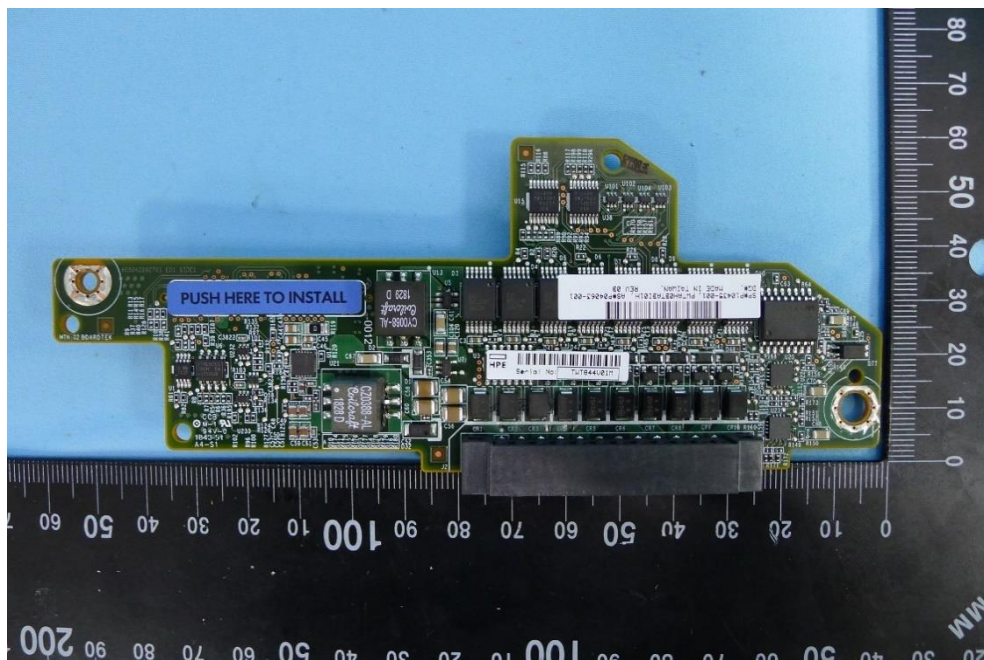


(40) IO Board: RS-232 Card (1395A2972001)

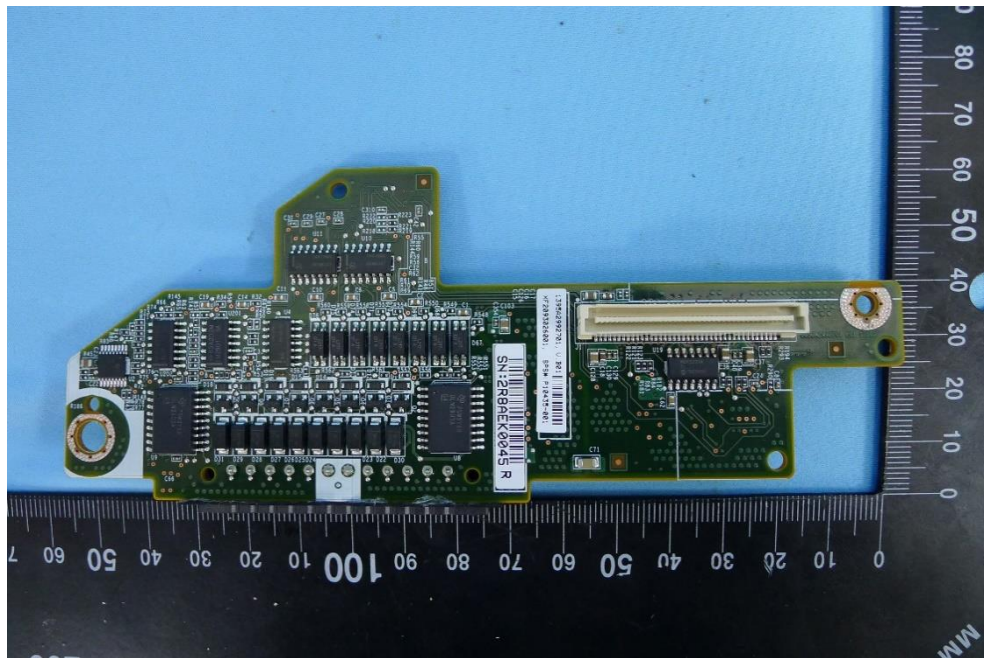


Product: LTE Module
Brand Name: Hewlett Packard Enterprise
Model Number: EL300_EM75L
Report No.: 1808TW5101-U10~U11

(41) IO Board: DIO Card (1395A2992701)

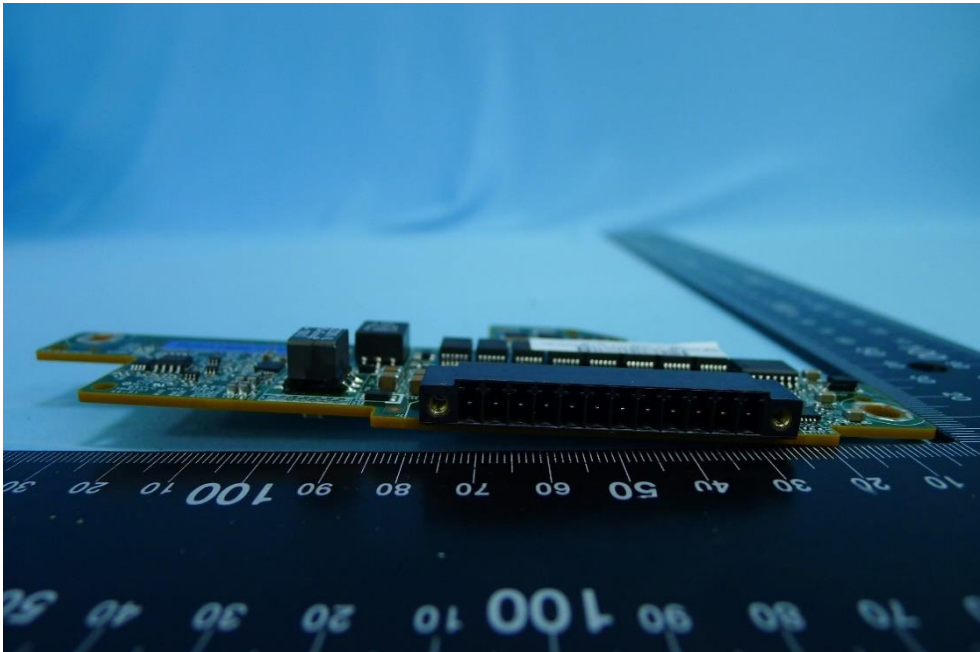


(42) IO Board: DIO Card (1395A2992701)



Product: LTE Module
Brand Name: Hewlett Packard Enterprise
Model Number: EL300_EM75L
Report No.: 1808TW5101-U10~U11

(43) IO Board: DIO Card (1395A2992701)



(44) m2 SSD (AF1TSMIC-HP1)

