

# Installation Guide

△ Please read this manual carefully before installation.

## Galaxy S10 / S10+ USPs Button Device Module (Operator / Retailer)

### Components



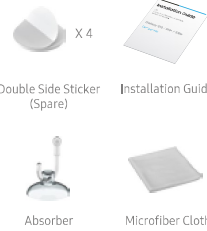
Device Module



Clear Acrylic Cover

Inserted sheet

NFC Tagging Guide Paper



Double Side Sticker (Spare)

Installation Guide

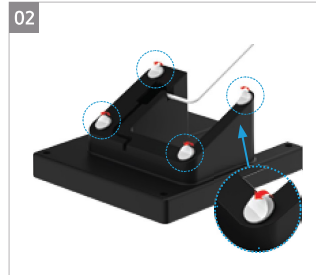
Absorber

Microfiber Cloth

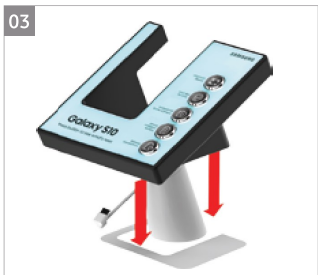
### User Guide



Place a local security system on the display table.  
※ Security device on the image is from Retailer/Operator store. It is Not included in the component.  
If security device is too big, it will not fit with the product.



Remove protective film of double-sided tape on the bottom of the USP Button device Module. (White Color x 4EA)



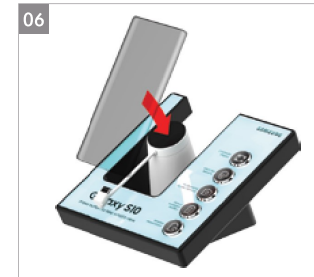
In order to establish connection between the device and the Button module, Refer to separate  
[Button module application install guide]  
\*Download the file from PVI  
The guide will be updated on 1/21



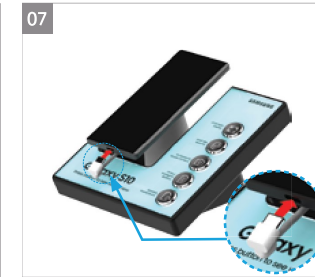
Remove protective film from the Acrylic cover.

Place the USP Button Device Module on the display table.

### User Guide



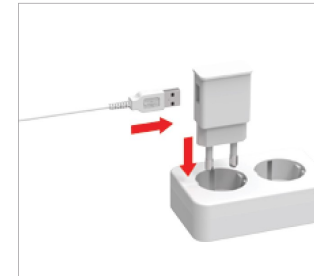
Fix the device on the security system.



Insert the security cable (C-type) to device.



Completion.



Make sure that the adaptor is inserted completely into the outlet. Make sure the plug is inserted perfectly into the socket.

\*Required to use 5V 2A Power adapter  
(Adaptor must be locally sourced since the package does not include it).



Be careful not to touch inserted sheet. Prismatic effect could be slightly faded by natural body oils.  
To restore prismatic effect, wipe the prismatic sheet with alcohol applied clean microfiber cloth.

### Disclaimer Guide

※ Disclaimer Guide will be updated on 1/25. Disclaimer for "24Hour Intelligent Battery" should be included.

### Warranty

One year warranty is provided for manufacturing defect.  
For defective product, report within 3days of receipt for replacement.

Any items damaged due to the reasons below are not covered under warranty.

- Malpractice while assembly and handling.
- Usage for improper purpose.

Arnova Co., Ltd.  
Arnova@arnova.co.kr  
+82319521907 | 09:00-18:30(GMT +9)

24hour Support contact.

- haeyoung.bae@arnova.co.kr
- Whatsapp: +821020050120
- Wechat : arnova1 | Line : arnova1



The grantee is not responsible for any changes or modifications note expressly approved by the part responsible for compliance. such modifications could void the user's authority to operate the equipment.

This device complies with FCC radiation exposure limits for an uncontrolled environment. Avoid operating this device at a distance less than 20cm from the user.