

Installation Guide

⚠ Please read this manual carefully before installation.

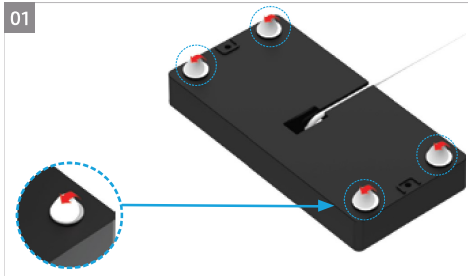
Galaxy S10 / S10+ / S10e Camera Button Module



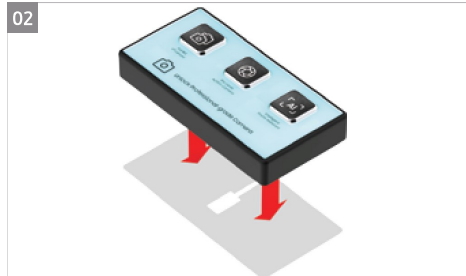
Components



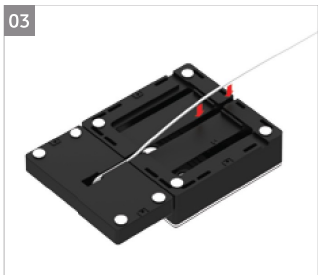
User Guide



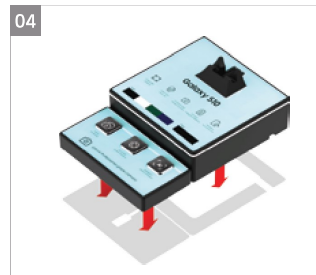
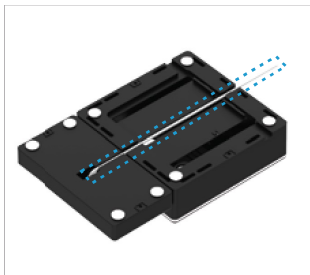
Remove protective film of double-sided tape on the bottom of the Camera Button Module. (White Color x 4EA)



In case of using only Camera Button Module, Place the module on the display table and continue to No. 05

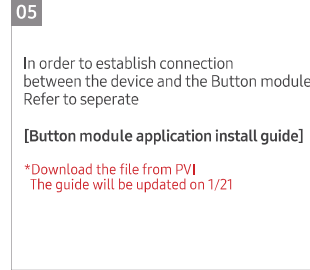


Insert the USB cable of the Camera Button Module through the Device Module centerline groove and fix it.



Place the Camera Button Module & Device Module on the display table.

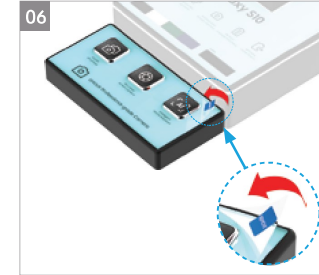
User Guide



In order to establish connection between the device and the Button module, Refer to separate

[Button module application install guide]

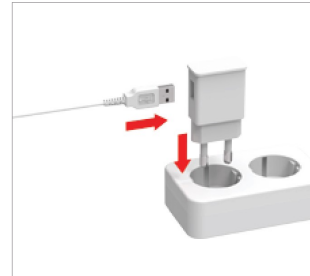
*Download the file from PVI
The guide will be updated on 1/21



Remove protective film from the Acrylic cover.



Completion.



Make sure that the adaptor is inserted completely into the outlet. Make sure the plug is inserted perfectly into the socket.

*Required to use 5V 2A Power adapter
(Adaptor must be locally sourced since the package does not include it).

This device contains licence-exempt transmitter(s)/receiver(s) that comply with Innovation, Science and Economic Development Canada's licence-exempt RSSI(s). Operation is subject to the following two conditions:
(1) This device may not cause interference.
(2) This device must accept any interference, including interference that may cause undesired operation of the device.

L'émetteur/récepteur exempt de licence contenu dans le présent appareil est conforme aux CNR d'Innovation, Sciences et Développement économique Canada applicables aux appareils radio exempts de licence. L'exploitation est autorisée aux deux conditions suivantes :
(1) L'appareil ne doit pas produire de brouillage;
(2) L'appareil doit accepter tout brouillage radioélectrique subi, même si le brouillage est susceptible d'en compromettre le fonctionnement.



Be careful not to touch inserted sheet. Prismatic effect could be slightly faded by natural body oils. To restore prismatic effect, wipe the prismatic sheet with alcohol applied clean microfiber cloth.

Disclaimer Guide

※ Disclaimer Guide will be updated on 1/25. Disclaimer for "Full kif of lenses" should be included.

Warranty

One year warranty is provided for manufacturing defect. For defective product, report within 3days of receipt for replacement.

Any items damaged due to the reasons below are not covered under warranty.

- Malpractice while assembly and handling.
- Usage for improper purpose.

Arnova Co., Ltd.
Arnova@arnova.co.kr
+82319521907 | 09:00-18:30(GMT +9)

24hour Support contact.

- haeyoung.bae@arnova.co.kr
- Whatsapp: +821020050120
- Wechat : arnova1 | Line : arnova1



The grantee is not responsible for any changes or modifications note expressly approved by the part responsible for compliance. such modifications could void the user's authority to operate the equipment.

This device complies with FCC radiation exposure limits for an uncontrolled environment. Avoid operating this device at a distance less than 20cm from the user.