

ORB X

A Fully Immersive Multi-Purpose Semi-Enclosed Station for Gamers And Professionals.

User Manual

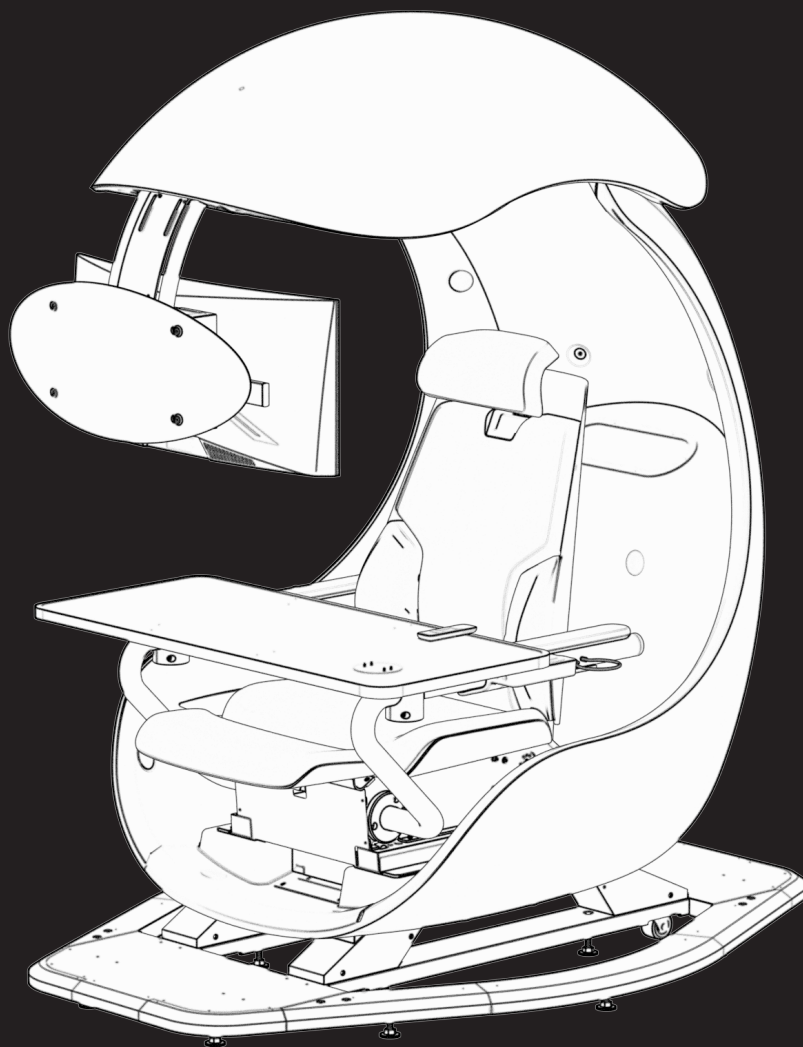


TABLE OF CONTENTS

Overview

OA. 01	PRODUCT SPECIFICATIONS	02
OA. 02	PARTS AND FUNCTIONS	03
OA. 03	REMOTE CONTROL BUTTONS AND FUNCTIONS	06
OA. 04	LEFT SIDE CONTROL DESCRIPTIONS	07
OA. 05	RIGHT SIDE I/O DESCRIPTIONS	08

Instructions

TU. 01	MONITOR MOUNT	09
TU. 02	SHUTTLE DOME LIFTING AND REMOTE CONTROL INSTRUCTIONS	11
TU. 03	RECLINING BACKREST	12
TU. 04	MOVING ERGONOMIC RECLINER FORWARD AND BACKWARDS	13
TU. 05	ERGONOMIC RECLINER LEG REST	14
TU. 06	COCKPIT CABLE	15
TU. 07	ARGB LED LIGHT CONTROL	17
TU. 08	POWER OPERATIONS	18
TU. 09	SAFETY PRECAUTIONS	19

FAQ

QA. 01	FAQ	19
--------	-----	----

After-sales Service

SA. 01	TROUBLESHOOTING	21
--------	-----------------	----

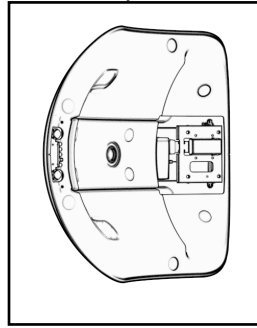
Regulation Descriptions

RL. 01	REGULATORY STATEMENTS OF VARIOUS COUNTRIES	23
--------	--------------------------------------------	----

Product Specifications

Product Name	ORB X
Voltage	100 ~ 240 VAC 50 / 60 Hz
Power	Support 1200Watt for PC and monitor Power consumption 750Watt max.
Cockpit Material	ABS
Ergonomic Recliner Material	Genuine leather
Dimensions	Length: 1881mm
	Width: 1810mm
	Height: 2088mm
Weight	Weight of entire machine: 343.5KG
Operating Temperature Range	5°C ~ 40°C (Space temperature)
Operating Humidity Range	5%~95%RH
Load Limit	Single-monitor: support to 8KG, the max. Suggested monitor size is 34" (curved & flat) Triple-monitor: support to 18 KG, the max. Suggested monitor size is 27" (curved & flat)
Station Cable	HDMI : 4K 100Hz cable x 3 USB2.0 : I/O hub cable, master Plus+ cable S/PDIF : 2.1 channels cable 3.5mm : Microphone cable, Headphone cable RJ45 : Ethernet cable
Hidden Chassis Configuration	Use with Cooler Master Q500L chassis recommended, and compatible with Cooler Master Q300L/NR200; the maximum space limit is 386mm x 230mm x 381mm

PARTS AND FUNCTIONS A



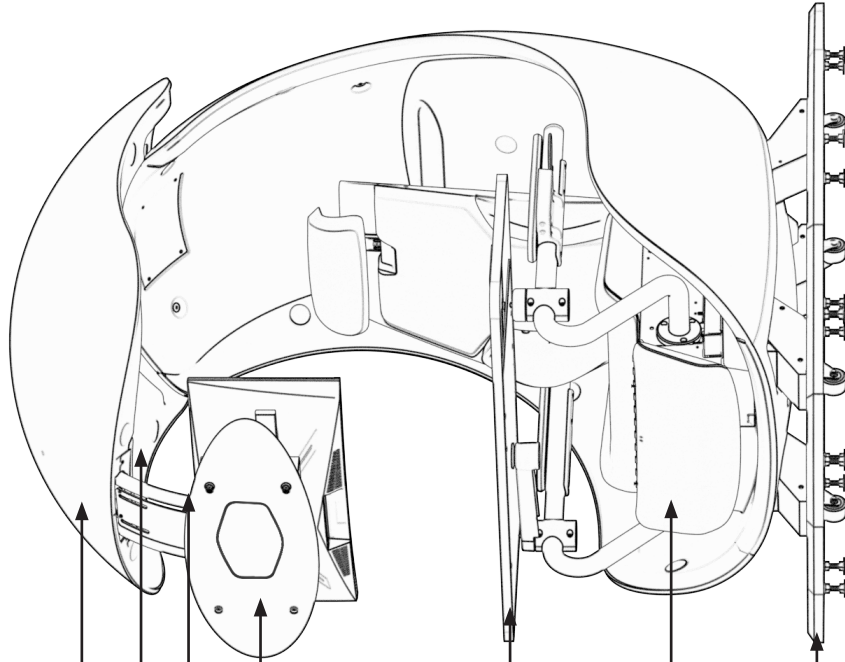
Shuttle dome bottom view

1 Shuttle dome

2 Full-range and tweeter speakers

3 Monitor mount

4 Cooler Master halo

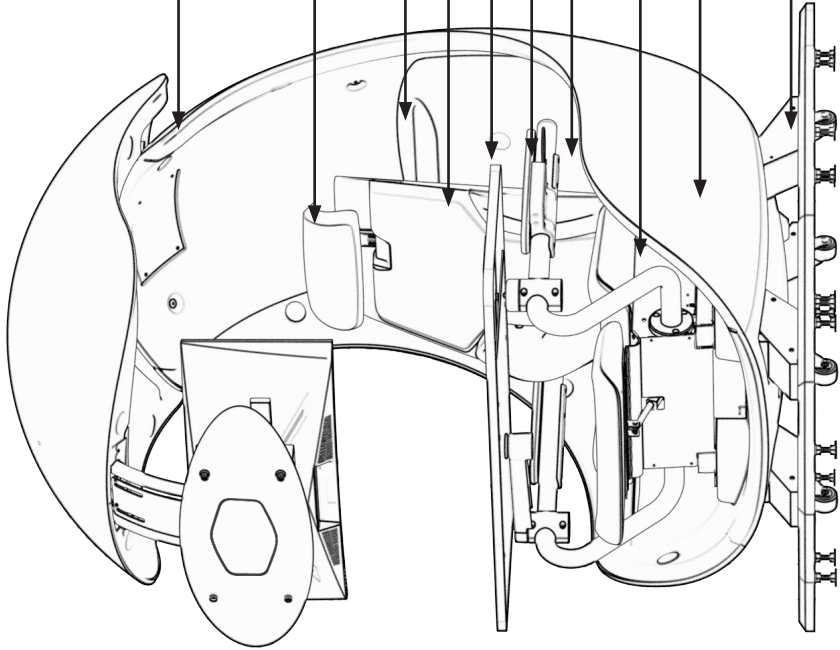


5 Desktop

6 Leg rest

7 Foot pedal

PARTS AND FUNCTIONS B



8 Cockpit ARGB LED light strips

9 Headrest

10 Vents

11 Lumbar support adjustment

12 Armrest

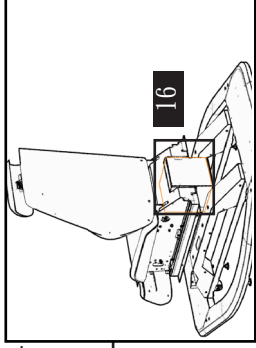
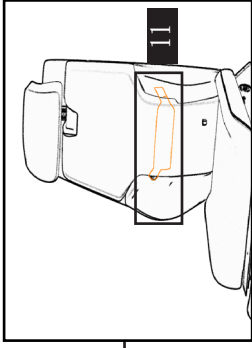
13 Cup holder

14 Control panel

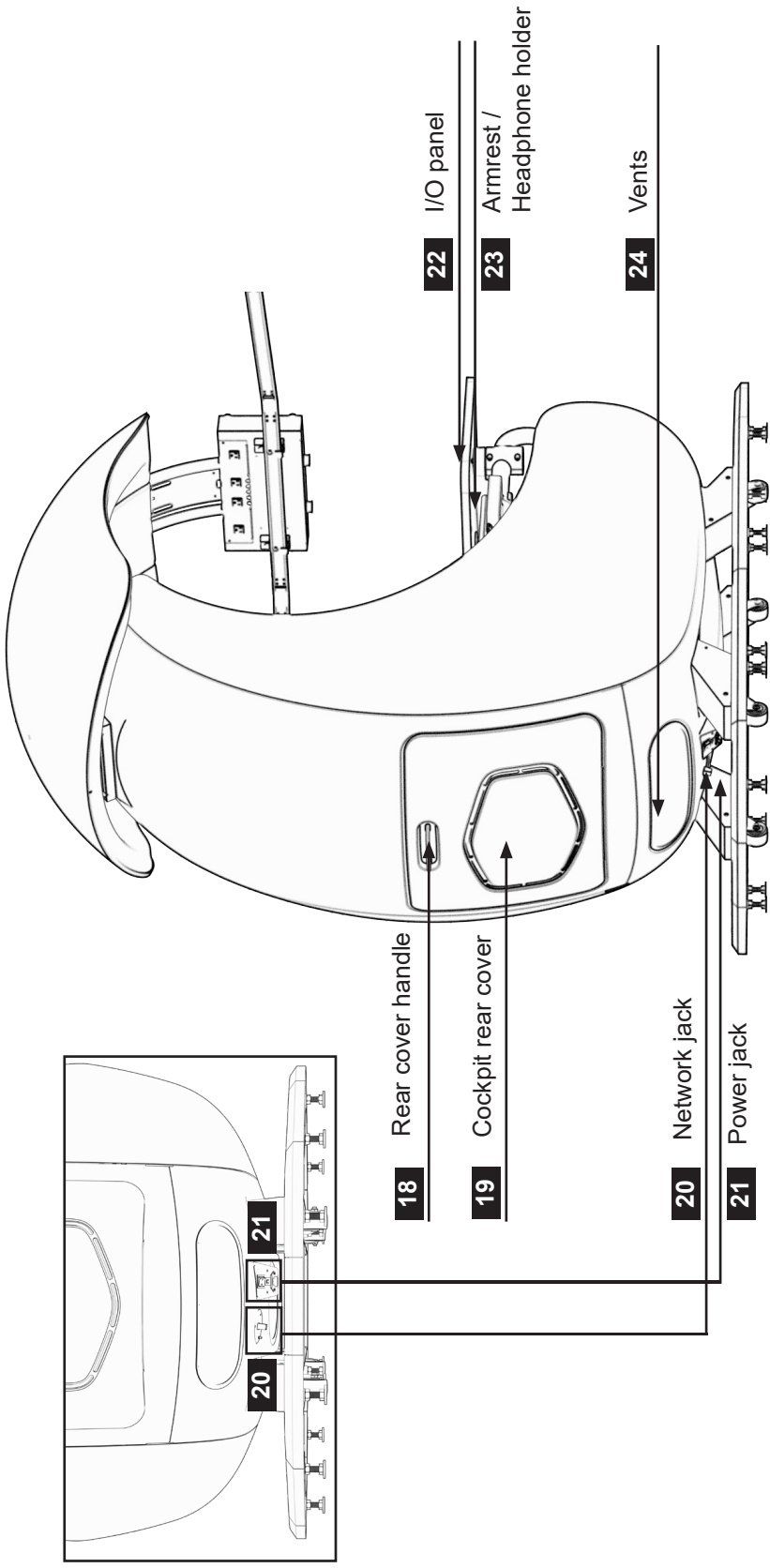
15 Ergonomic recliner

16 Subwoofer

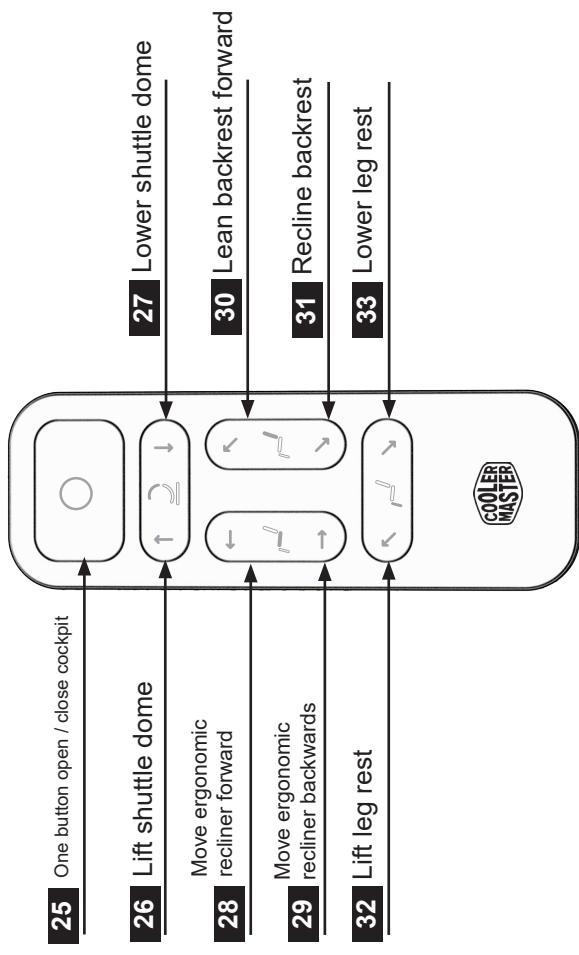
17 Base



PARTS AND FUNCTIONS C



REMOTE CONTROL BUTTONS AND FUNCTIONS



LEFT SIDE CONTROL DESCRIPTIONS

34 Power switch(Long press)

One button open / close cockpit

Cockpit position memory (Long press for 5 seconds)

Switch between open position and

memory position (Short press)

35

36 Speaker switch

37 S/PDIF audio input

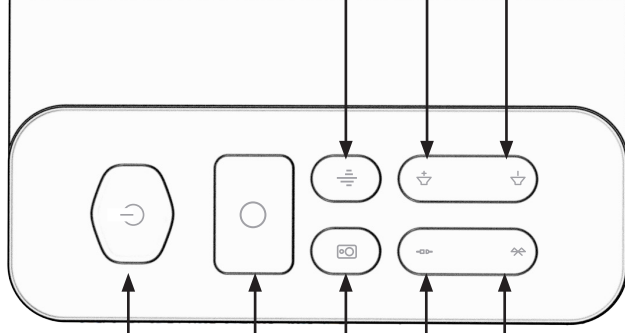
38 Bluetooth audio input

39 Audio mode

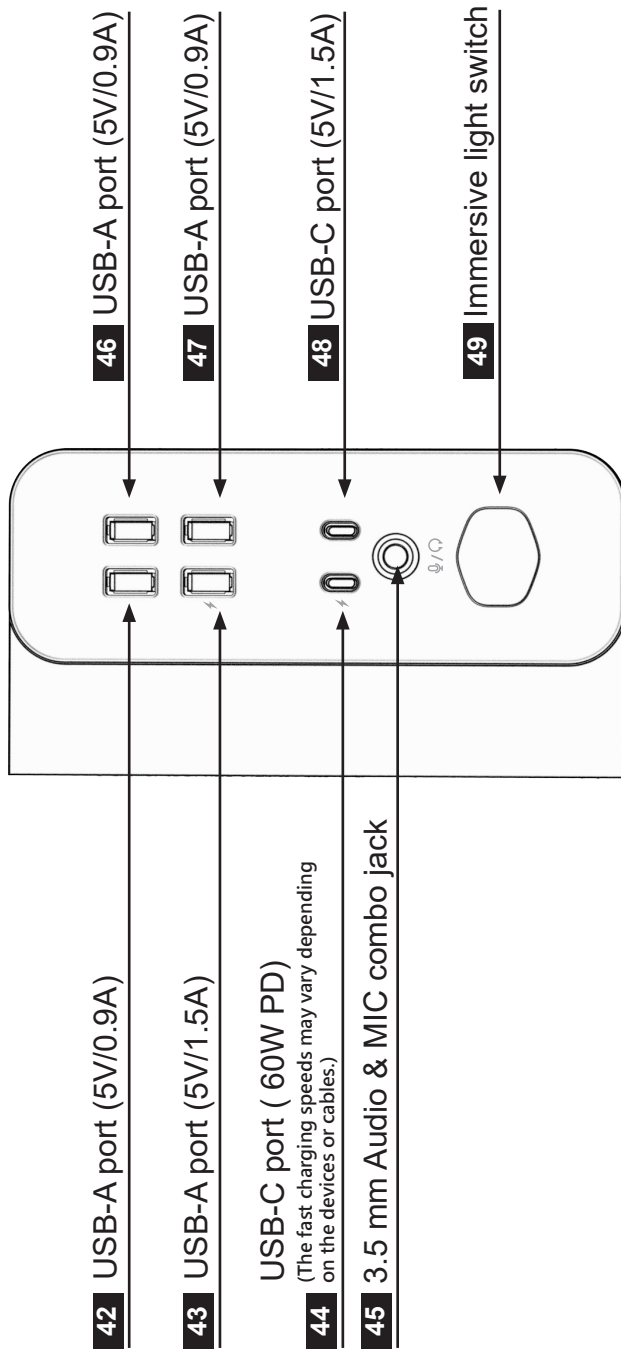
(Cycle through game [purple light], theater [green light] and music [white light] modes, only applicable to S/PDIF audio input)

40 Volume up

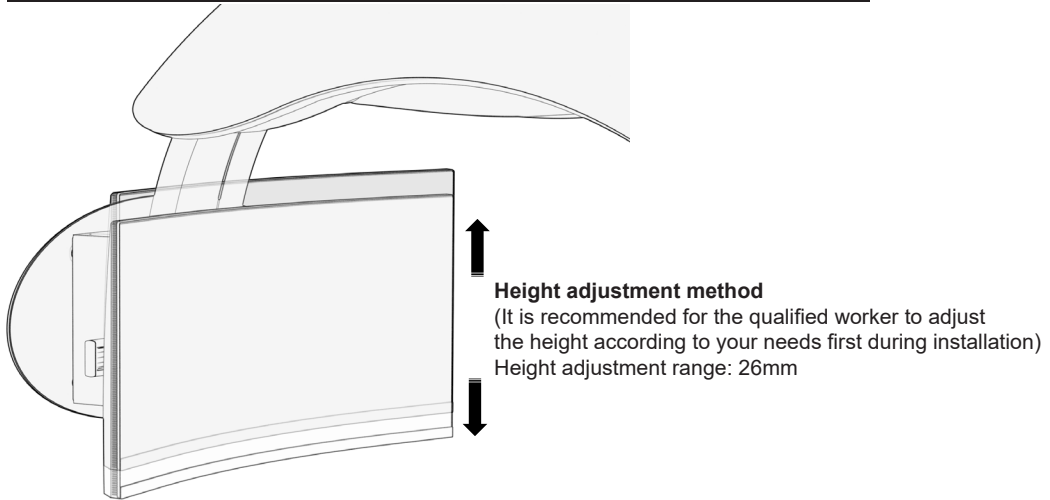
41 Volume down



RIGHT SIDE I/O DESCRIPTIONS

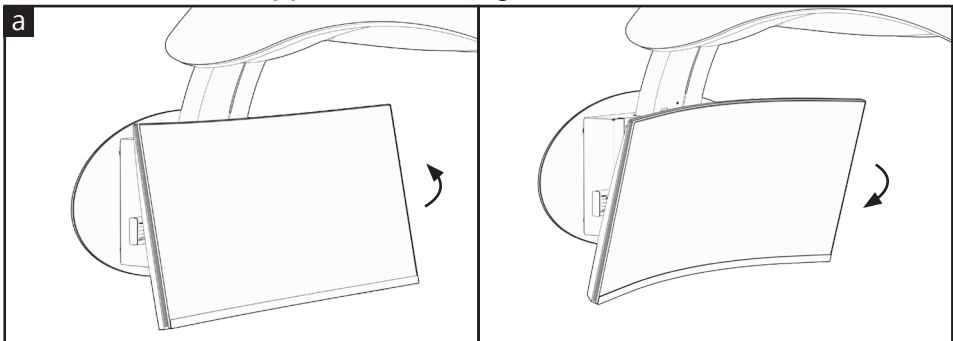


MONITOR MOUNT

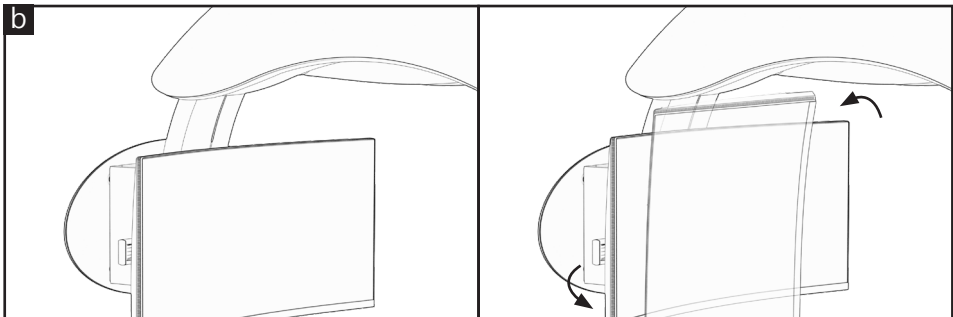


Angle adjustments and rotations

Single-monitor mount/support arm setting

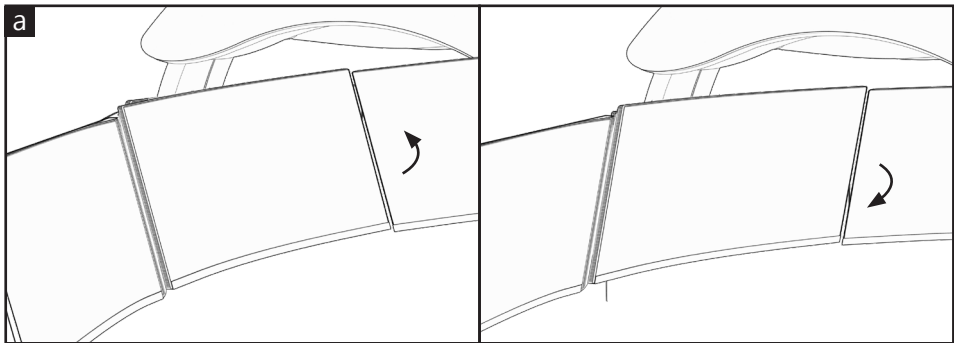


a. Monitor can be tilted upwards and downwards. The degree of the tilt will depend on the monitor chosen for installation, such as the size, type, and brand. (Do not hit the monitor while adjusting.)

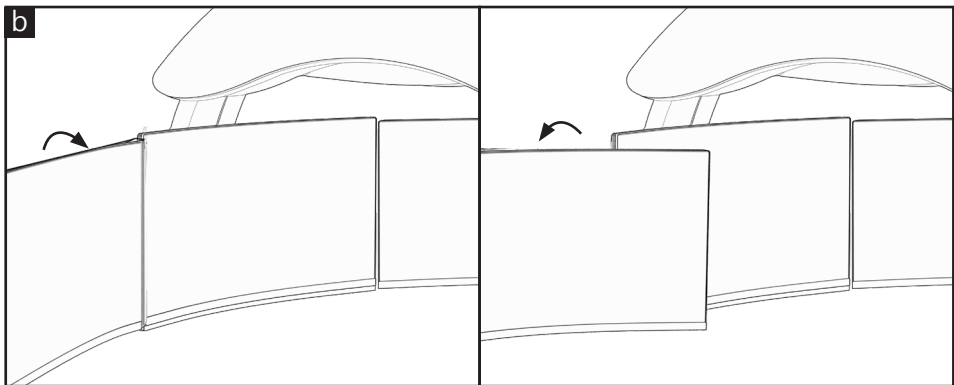


b. Monitor can rotate. The degree of the rotation will depend on the monitor chosen for installation, such as the size, type, and brand. (Do not hit the monitor while rotating.)

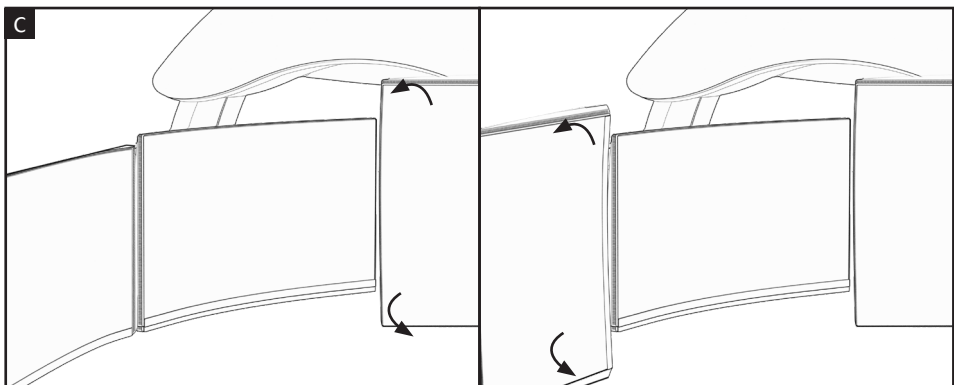
Triple-monitor mount/triple support arm setting



a. Monitors can be tilted upwards and downwards. The degree of the tilt will depend on the monitors chosen for installation, such as the size, type, and brand. (Do not hit the monitors while adjusting.)

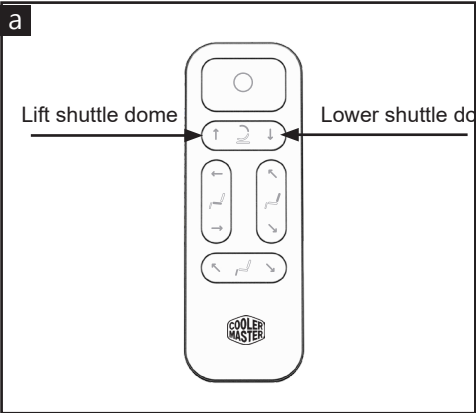


b. The monitors on two sides can be swivelled. The degree of the swivel will depend on the monitors chosen for installation, such as the size, type, and brand. (Do not hit the monitors while adjusting.)



c. Monitors can rotate. The degree of the rotation will depend on the monitors chosen for installation, such as the size, type, and brand. (Do not hit the monitors while rotating.)

SHUTTLE DOME LIFTING AND REMOTE CONTROL INSTRUCTIONS



Remote control instructions

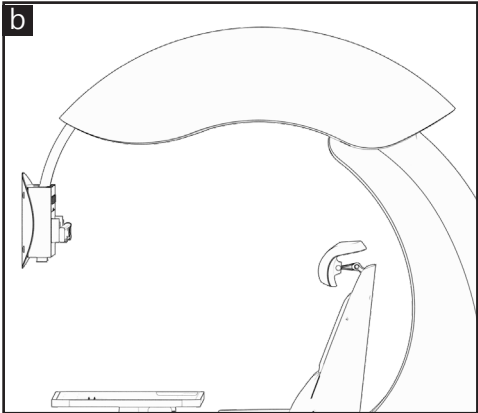
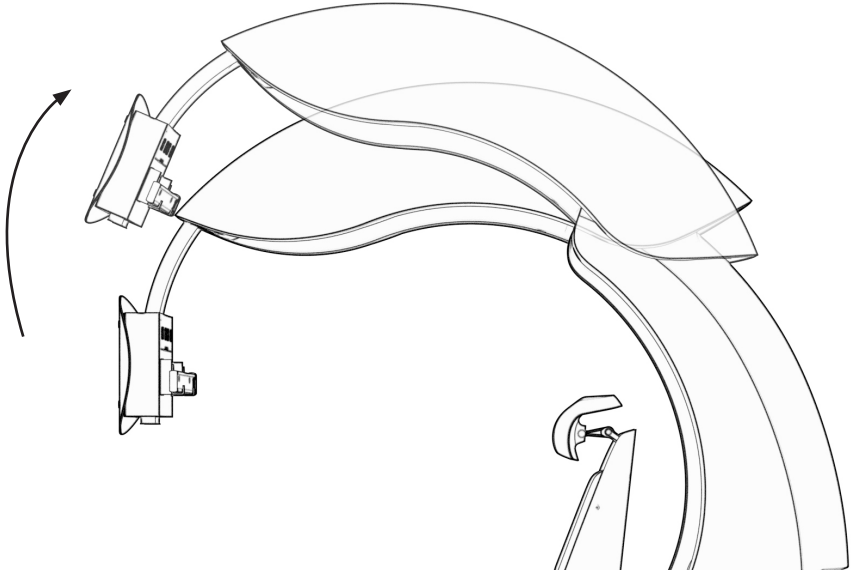
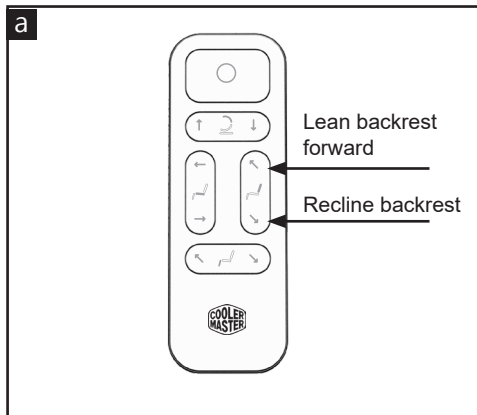


Illustration of the shuttle dome lowered to the lowest position



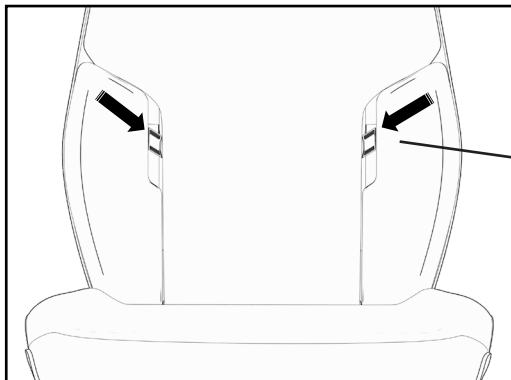
The height limit of the shuttle dome is 240cm.

RECLINING BACKREST

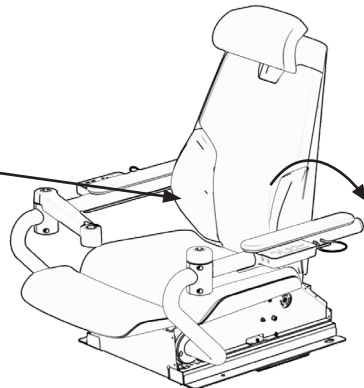


Remote control instructions

Manual adjustment of lumbar support (must be pressed simultaneously)

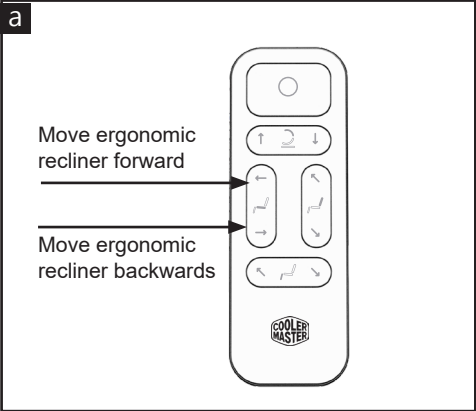


Backrest can recline to 130 degrees maximum

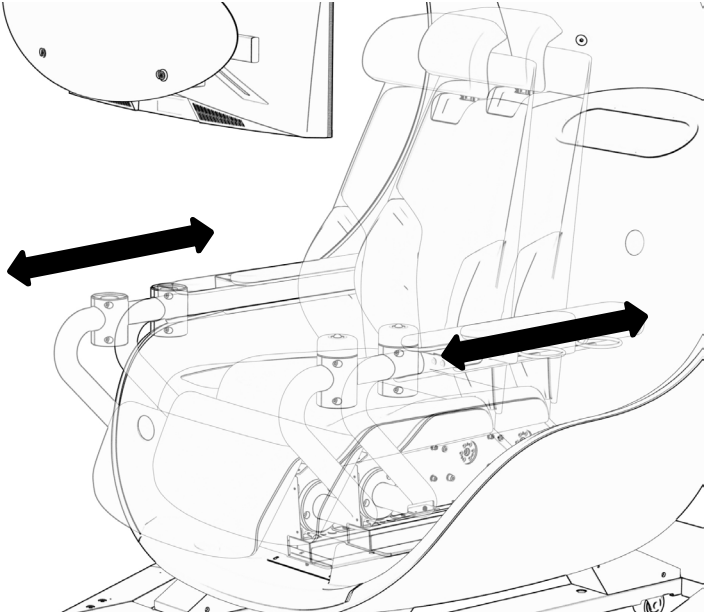


Caution! Since the relative positions of the front and back of the ergonomic recliner are different, the system will limit the reclining angle of the backrest to prevent it from hitting the inside of the cockpit.

MOVING ERGONOMIC RECLINER FORWARD AND BACKWARDS

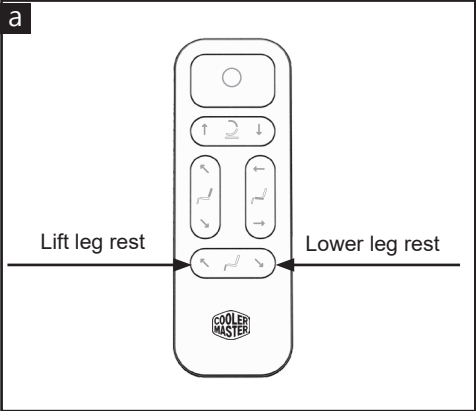


Remote control instructions

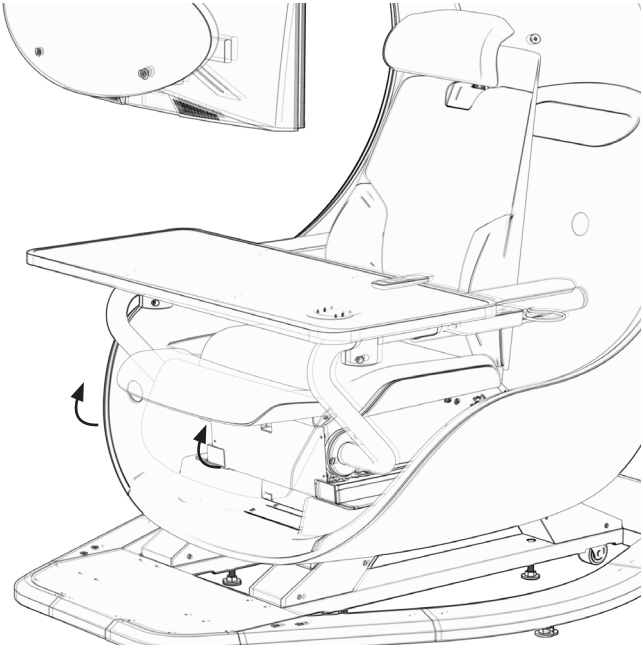


The ergonomic recliner can be adjusted forward and backwards for 190 mm

ERGONOMIC RECLINER LEG REST

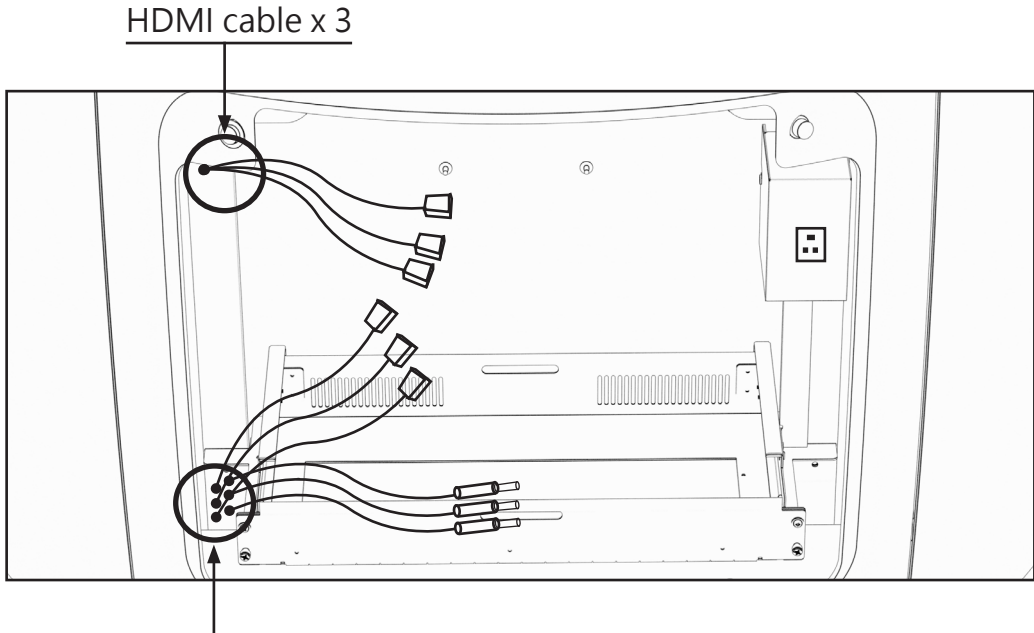
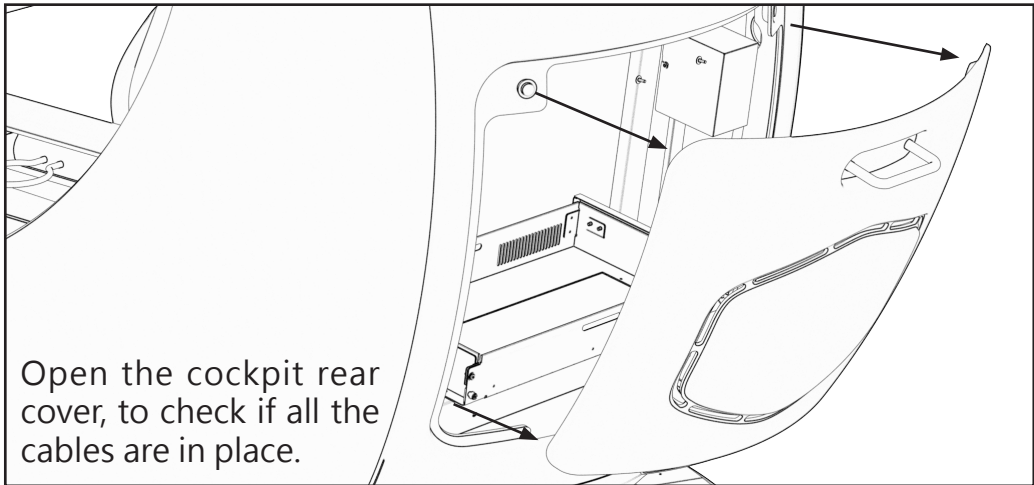


Remote control instructions



The leg rest cannot bear the weight of a person alone

COCKPIT CABLE



USB2.0 - I/O Hub Cable

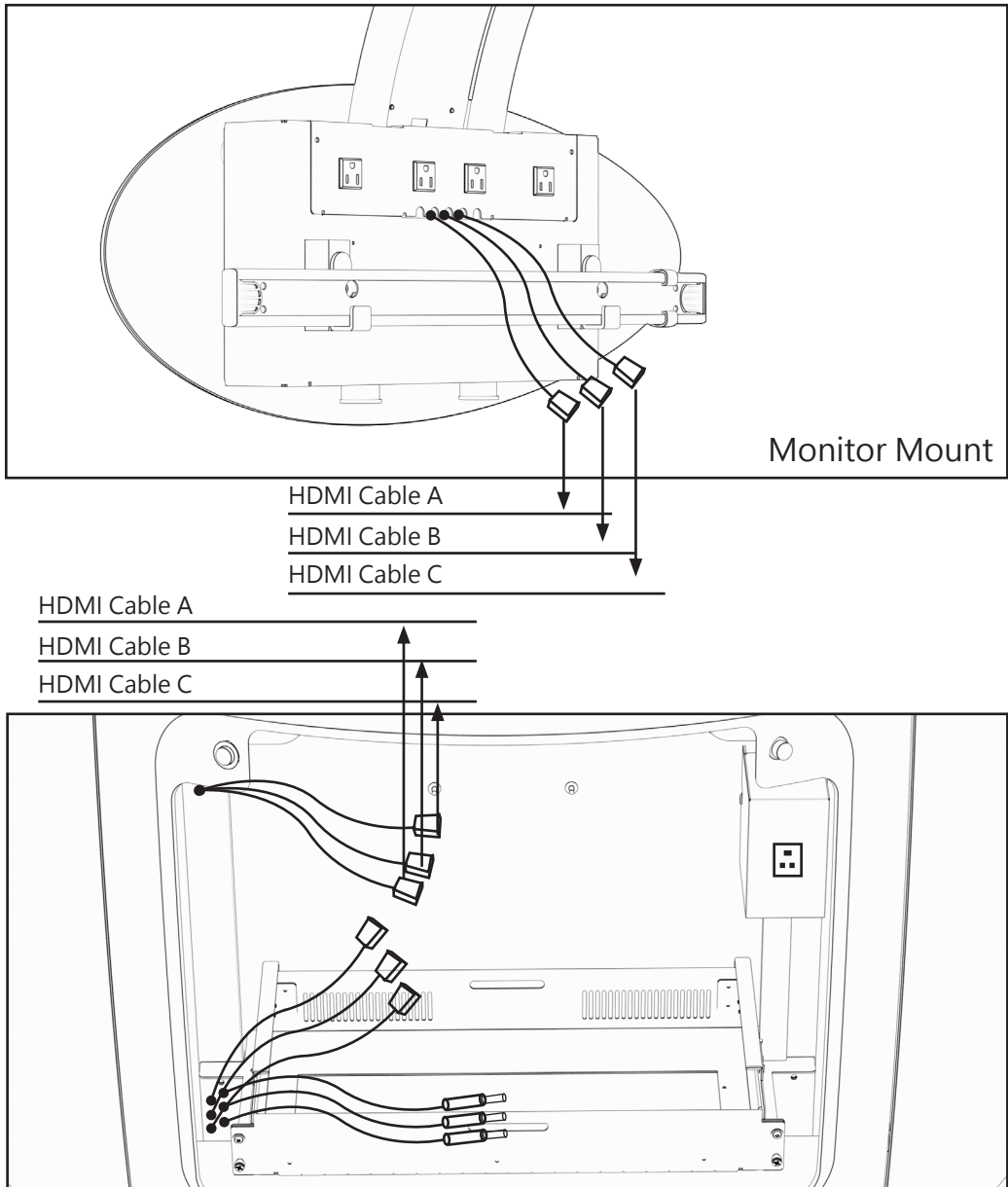
USB2.0 - Master Plus+ Cable

RJ45 - Ethernet Cable

3.5mm - Microphone Cable

3.5mm - Headphone Cable

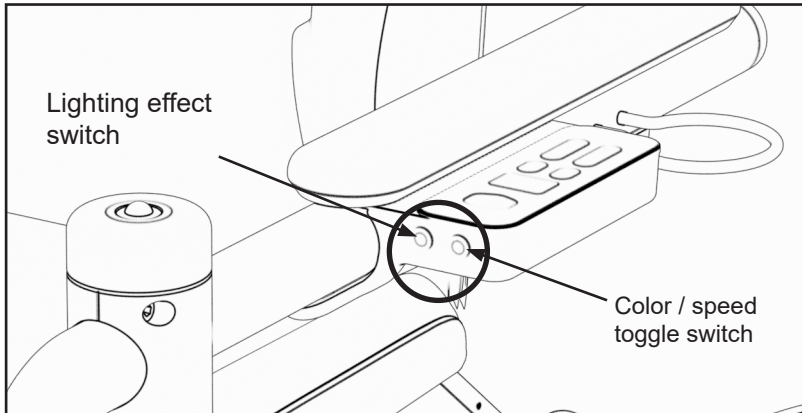
S/PDIF - 2.1 Channels Fiber Optic Cable



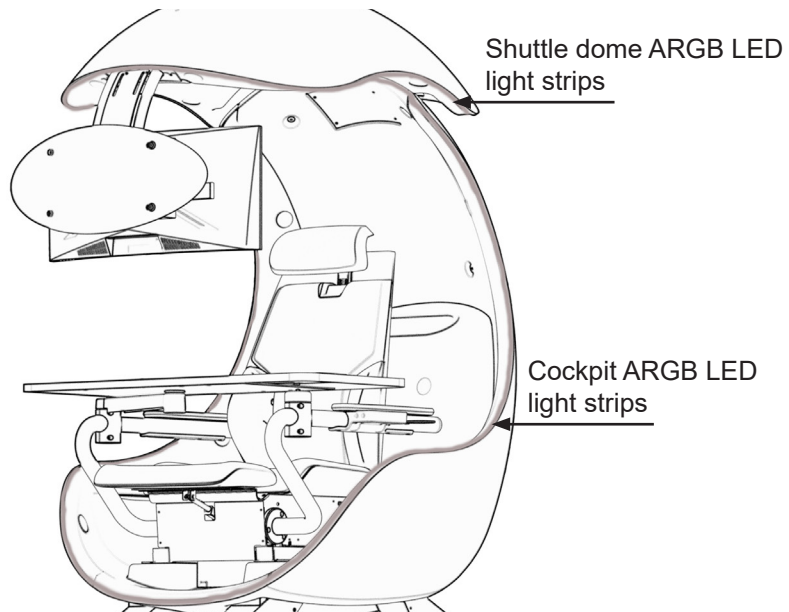
Caution!

The fiber optic cable MUST be used for 2.1 channels audio system

ARGB LED LIGHT CONTROL



Left armrest ARGB LED light control



Switch instructions

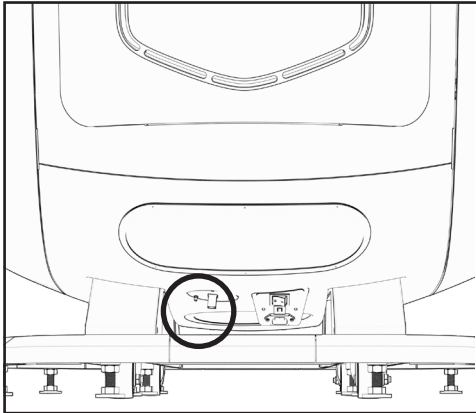
1. Lighting effect switch (red light)
Cycle through 8 types of lighting effects and OFF mode
2. Color / speed toggle switch
Toggle speed and color

Required software -
masterPLUS + Windows can be downloaded
from: www.coolermaster.com *

Modes of lighting effects and speed levels

1. Static support RGB
2. Rainbow spectrum with 3 speed levels
3. Breathing RGB with 3 speed levels
4. Double color flow with 3 speed levels
5. Spectrum RGB with 3 speed levels
6. Stack flow RGB with 3 speed levels
7. Recoil RGB with 3 speed levels
8. Reload RGB with 3 speed levels
9. Off

POWER OPERATIONS



Caution

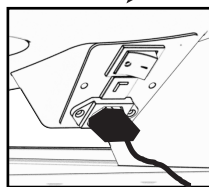
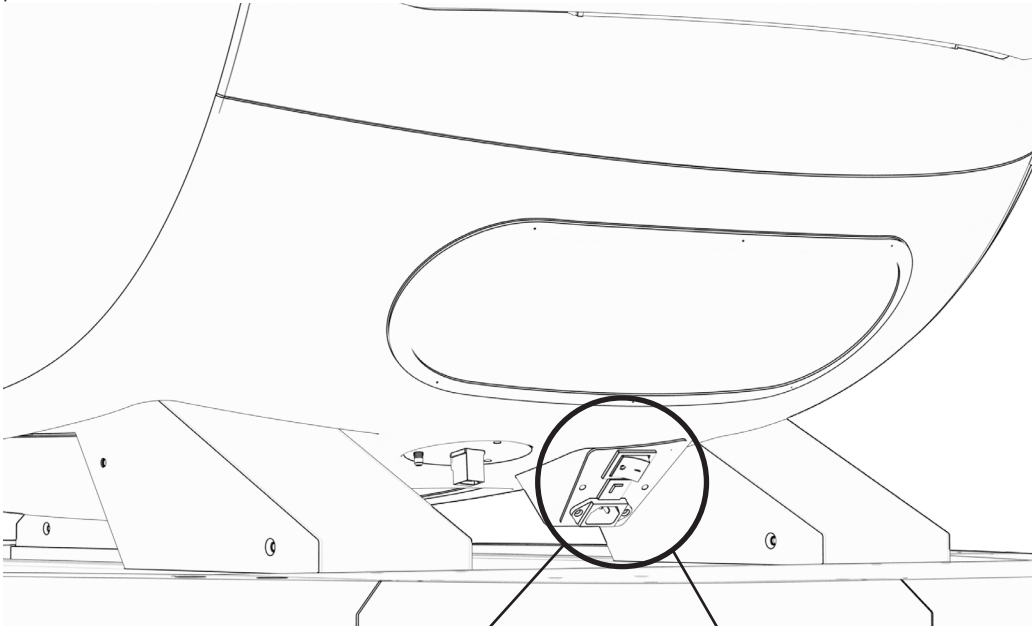
Do not press the cockpit
Do not put unrelated objects inside
the cockpit
Keep the cockpit away from fire and
water

Ethernet port (factory setting)/external cable harness opening

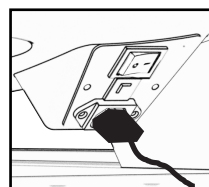
a. This is the Ethernet port when the host is placed in the hidden chassis (factory setting)

b. Please loosen this opening to use as the external cable harness when the host is placed outside the ORB X hidden chassis

3xHDMI, LINE IN, LINE OUT, S/PD-IF fiber optic cables can be run through here to connect to external computers



Power ON



Power OFF

SAFETY PRECAUTIONS

1. Do not sit or stand on the backrest, leg rest, side shell, armrests or desktop.
2. The station should be placed on a horizontal plane to prevent falling and causing accidents or injuries.
3. Do not put any objects into any gaps between the table and armrests.
4. Do not get under the table or the recliner to avoid injuries or scratches.
5. Please keep sharp objects away from the mouse pad or seat surface.
6. Please operate the station in a dry environment.
7. Do not touch plugs, sockets, switches and wires when your hands are wet.
8. Please use the remote control and the left armrest control panel to lift the shuttle dome.
9. Please adjust the angle of the monitor in a static state. Do not hit or press hard on the monitor mount.
10. The cockpit can not accommodate more than one person.
11. Do not operate the remote control and the armrest control panel at the same time.
12. The power supply operation cannot exceed the rated power.
13. Do not put your hands into the gap between the leg rest and the seat.
14. Do not put your hands under the table while it is moving.
15. The monitors mount cannot exceed the weight limit
16. Do not lean on the shuttle dome or place heavy objects on it.
17. The USB connector should be shorter than 6cm to avoid damage to the device while the table is moving.
18. It is normal for the ergonomic recliner and the shuttle dome to produce sound during operation.
19. When you cannot control the shuttle dome during power outage, please do not panic. Push away the desktop by hand and carefully exit through the front.

20. PLEASE DO NOT TOUCH WHEN SEAT IS MOVING



To warn people not to touch the seat while it is moving.

21. HANDS PINCHING



To warn people not to put their hands into the gap to avoid injuries.

22. MAXIMUM WEIGHT TABLE CAN HOLD IS 25 KG



To warn people not to place too many or heavy objects on the table.

23. LEANING OR SITTING ON THE SIDE SHELL PROHIBITED



To warn people not to lean or sit on the side shell.

24. NO HANGING OR PULLING



To warn people not to hang on or pull the shuttle dome.

25. The power supply cord shall require connection of the equipment protective earthing conductor to the installation protective earthing conductor.

26. **CAUTION** Risk of fire or explosion if the battery is replaced by an incorrect type
MISE EN GARDE. Risque d'incendie ou danger d'explosion en cas de
remplacer le type de la pile incorrectement.

27. Do not ingest battery, Chemical Burn Hazard

[The remote control supplied with Orb X] This product contains a coin / button cell battery. If the coin / button cell battery is swallowed, it can cause severe internal burns in just 2 hours and can lead to death.

Ne pas avaler la batterie, danger de brûlure chimique.

[La télécommande est fournie avec OrbX]. Ce produit contient une pile bouton. Si la pile bouton est avalée, elle peut provoquer de graves brûlures internes en moins de 2 heures, ce qui peut entraîner la mort.

28. Keep new and used batteries away from children. If the battery compartment does not close securely, stop using the product and keep it away from children.

Tenez les piles neuves et usagées hors de portée des enfants. Si le compartiment de pile ne se ferme pas correctement, cessez d'utiliser le produit et tenez-le hors de portée des enfants.

29. If you think batteries might have been swallowed or placed inside any part of the body, seek immediate medical attention.

Si vous pensez que des piles ont été ingérées ou placées dans quelque partie du corps que ce soit, consultez immédiatement un médecin.

FAQ

Question 1: What is the required area?

Answer: It takes up to 4 square meters to place the station.
minimum height of 270 cm is also required for the shuttle dome to be lifted and adjusted.

Question 2: How to transport and install ORB X?

Answer: Please contact your local service provider.

Question 3: Can ORB X be disassembled after installation?

Answer: Please contact your local service provider.

Question 4: Can ORB X be moved after installation?

Answer: Yes, ORB X comes with Mecanum wheels which allow it to be moved for a short distance.

Question 5: How to clean the ORB X exterior?

Answer: It can be wiped with a damp cloth when dusty.

Question 6: How to clean the seat surface?

Answer: It can be cleaned with a leather cleaner on a regular basis or when needed.

Question 7: Why is there a gap between the mouse pad and the desktop?

Answer: The ORB X mouse pad is made of natural material and there might be shrinkage due to thermal expansion and contraction, which does not affect the product quality.

ORB X operation suggestion:

1. When the cockpit is turned on, press the "one-button switch" for the first time, the shuttle dome and seat return to their original positions, and press the "one-button switch" for the second time, the cockpit position will be memorized.
2. Press the "one-button switch" to return the shuttle dome and seat to their original positions when leaving the cockpit.

ORB X safety operation:

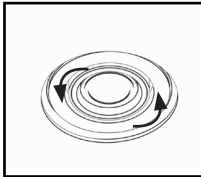
1. Press the "one-button switch", and the cockpit position will be memorized, press the "one-button switch" to interrupt, and then press the "one-button switch" to complete the action
2. Press the "one-button switch", and the shuttle dome and seat return to the original position, press any button to interrupt, and then press the "one-button switch" to complete the action
3. If the power is not turned off in the original position, the seat back will not be able to move back. It is recommended to press the "one-button switch" to return to the original position.

Question 8: How to replace the immersive light?

Answer: MR16 standard specifications, DC12V.

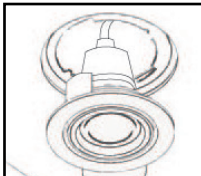
The replacement method is as follows:

A. Turn the light fixture base counterclockwise and take out the immersive light.

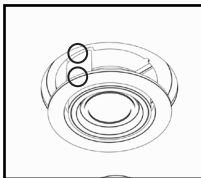


B. Replace the immersive light.

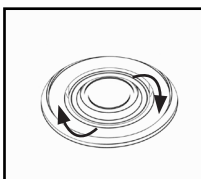
(No polarity difference, no need to worry about wrong circuit connection.)



C. Align the tenon and insert the immersive light into into the ceiling box.



D. Turn the light fixture base clockwise.



Question 9: What is the product warranty policy?

Answer: Please visit www.coolermaster.com for product warranty.

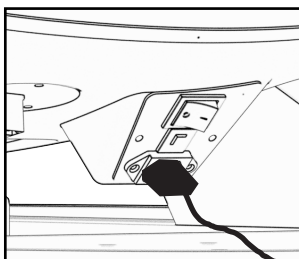
Question 10: Which accessories are not covered by the warranty?

Answer: The product warranty only covers electrical parts except for the consumables such as MR16 immersive lights.

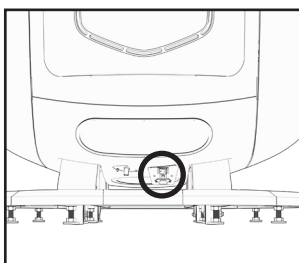
TROUBLESHOOTING

1. If there is no response when turning on the station by pressing the power button on the left armrest control panel, please follow the steps:

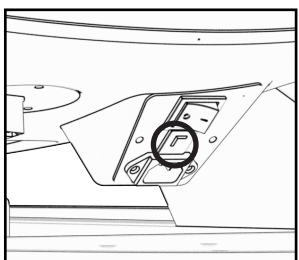
A. Confirm whether the power plug is inserted properly.



B. Confirm whether the power switch is on.



C. Confirm whether the outlet is overloaded and causes the fuse to burn.



D. If the problem still exists after all actions above are taken, please unplug and plug in again.

2. If the speakers cannot produce sound, please follow the steps:

A. Confirm whether the speaker switch is on. The indicator lights will be on when the speaker switch is on.

B. Confirm whether the desired audio input is active. When S/PDIF audio input or Bluetooth audio input is active the corresponding indicator light will be on.

C. Confirm whether the S/PDIF cable connects to the computer properly and choose the correct output on sound settings when switching to S/PDIF audio input.

D. Confirm whether your device connects to ORB X when selecting Bluetooth audio input. If you want to pair your device with ORB X please press “Bluetooth audio input” button on the left control panel. The speaker plays a notification sound when entering pairing mode and plays a confirmation notification sound when pairing completed.

E. Adjust the volume on your computer or device.

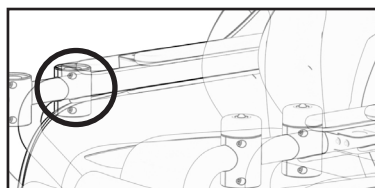
F. Press “Volume up” button or “Volume down” button to adjust the speaker volume.

3. If the monitor displays nothing, please follow the steps:

- A. Check if the monitor power cord is connected and if the monitor is powered on.
- B. Check whether the HDMI cable is connected to the computer and monitor, and check if the cable numbers on both sides are the same.

2. If the desktop cannot rotate or produces abnormal sounds, please follow the steps:

- A. Check whether the shaft screws have loosened.
- B. Check whether there is any object obstructing the movement.



3. If the recliner cannot be adjusted, please follow the steps:

- A. Check if there is power remained in the remote control.
- B. Check whether there is any object on the rails.
- C. Check whether there is any object under the leg rest.
- D. Check whether there is any object behind the backrest.

4. If the shuttle dome cannot be lifted or lowered, please follow the steps:

- A. Check whether the power switch is on.
- B. Check if there is power remained in the remote control.
- C. Check whether there is any object on the shaft of the shuttle dome.

5. If the base cannot be moved or fixed to the ground, please follow the steps:

- A. Check whether there is any object on the ground.
- B. Check whether the leveling screw legs are installed correctly or have loosened.
- C. If the 360 degree rotating wheels are not aligned, the startup power needs to be increased. Or shake the cockpit left and right so that it can slide smoothly.

6. If the fan cannot function, please follow the steps:

Check whether there is any object in the fan.

If the situations still exist after all actions above are taken, please contact customer service any time.

REGULATORY STATEMENT

United State

FEDERAL COMMUNICATIONS COMMISSION INTERFERENCE STATEMENT

This equipment has been tested and found to comply with the limits for a Class B digital device, pursuant to part 15 of the FCC Rules. These limits are designed to provide reasonable protection against harmful interference in a residential installation. This equipment generates, uses and can radiate radio frequency energy and, if not installed and used in accordance with the instructions, may cause harmful interference to radio communications. However, there is no guarantee that interference will not occur in a particular installation. If this equipment does cause harmful interference to radio or television reception, which can be determined by turning the equipment off and on, the user is encouraged to try to correct the interference by one or more of the following measures:

- Reorient or relocate the receiving antenna.
- Increase the separation between the equipment and receiver.
- Connect the equipment into an outlet on a circuit different from that to which the receiver is connected.
- Consult the dealer or an experienced radio/ TV technician for help.

Canada

Canada, ISED notice:

This device contains licence-exempt transmitter(s)/receiver(s) that comply with Innovation, Science and Economic Development Canada's licence-exempt RSS(s). Operation is subject to the following two conditions:

- (1) This device may not cause interference.
- (2) This device must accept any interference, including interference that may cause undesired operation of the device.

Canada, ISED avis:

L'émetteur/récepteur exempt de licence contenu dans le présent appareil est conforme aux CNR d'Innovation, Sciences et Développement économique Canada applicables aux appareils radio exempts de licence. L'exploitation est autorisée aux deux conditions suivantes :

- 1) L'appareil ne doit pas produire de brouillage;
- 2) L'appareil doit accepter tout brouillage radioélectrique subi, même si le brouillage est susceptible d'en compromettre le fonctionnement.

Radio Frequency (RF) Exposure Information

The radiated output power of the Wireless Device is below the Innovation, Science and Economic Development Canada radio frequency exposure limits. The Wireless Device should be used in such a manner such that the potential for human contact during normal operation is minimized.

This device has also been evaluated and shown compliant with the IC RF Exposure limits under mobile exposure conditions. (antennas are greater than 20cm from a person's body).

(French)

Informations concernant l'exposition aux fréquences radio (RF)

La puissance de sortie émise par l'appareil de sans fil est inférieure à la limite d'exposition aux fréquences radio d'Innovation, Sciences et Développement économique Canada. Utilisez l'appareil de sans fil de façon à minimiser les contacts humains lors du fonctionnement normal.

Ce périphérique a également été évalué et démontré conforme aux limites d'exposition aux RF d'IC dans des conditions d'exposition à des appareils mobiles (antennes sont supérieures à 20 cm à partir du corps d'une personne).

Taiwan (R.O.C.)

「減少電磁波影響，請妥適使用」

Low power device

取得審驗證明之低功率射頻器材，非經核准，公司、商號或使用者均不得擅自變更頻率、加大功率或變更原設計之特性及功能。

低功率射頻器材之使用不得影響飛航安全及干擾合法通信；經發現有干擾現象時，應立即停用，並改善至無干擾時方得繼續使用。

前述合法通信，指依電信管理法規定作業之無線電通信。低功率射頻器材須忍受合法通信或工業、科學及醫療用電波輻射性電機設備之干擾。

Europe(CE)

Hereby, [Cooler Master Inc.], declares that this [Orb X] is in compliance with the essential requirements and other relevant provisions of Directive 2014/53/EU.

URL: www.coolermaster.com

Unite Kingdom

Hereby, [Cooler Master Inc.], declares that this [Orb X] is in compliance with the essential requirements and other relevant provisions of Radio Equipment Regulations 2017.

URL: www.coolermaster.com

Device has not approved any changes or modifications to this device by the user. Any changes or modifications could void the user's authority to operate the equipment. See 47 CFR Sec. 15.21.

Make it Yourself

A fully immersive multi-purpose semi-enclosed workstation for gamers and professionals.

