



QUICK START GUIDE ALERT FM RECEIVER

The ALERT FM receiver is an advanced Emergency Warning Receiver. The information is transmitted over the ALERT FM radio network in areas with good coverage.

The ALERT FM receiver is equipped with a graphical display showing receiver status and time. It will switch to the emergency information automatically when there are alerts or other information services.

Power

An AA battery must always be installed. Replace when indicator goes low, always have a spare battery available.

Whenever possible, connect to a USB charger using the attached cable.

When running on USB power, the battery acts as backup in case of power interruption.

When using external power, the battery is not discharged.

A new, good quality Alkaline cell (AA-size) can keep the unit operational for up to 4 weeks without external power.

The power source is indicated on the display panel as well as the battery level.



Inserting the Battery

1. Open the battery compartment lid and insert battery into the compartment as directed on receiver.

Note: Use new AA size alkaline cells.

2. Place the battery compartment lid over the installed battery and press into place to close.

Turning on the receiver

The ALERT FM Receiver should start immediately after power is applied. If not, visit www.alertfm.com for support contact details.

No setup is required, the receiver will search for an ALERT FM transmitter automatically.



Display

The Display Panel at the top provides information about the receiver's current status.

The display layout may also be shown with the symbols to the left and right of the clock. This is due to the receiver improving the quality of the signal. All functions remain active.



- 1. Radio reception quality:** The more indicators it shows, the better the reception quality is at the present location. Normally two bars are required for reliable reception. Place the unit in a location with good reception quality.



- The moving vertical line indicates that the receiver is searching for a station. If no station is found, it will "sleep" (the zz symbol) in order to save battery. It will not sleep if USB powered. Pressing any button will make the receiver search for a valid ALERT FM signal.



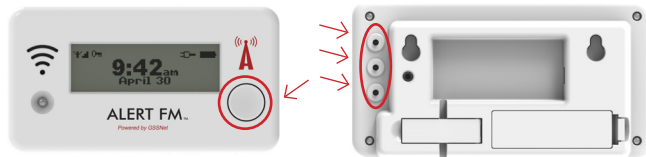
- 2. Locked to a valid ALERT FM service:** The key symbol indicates that the receiver is tuned to an FM transmitter carrying the ALERT FM signal. If you do not see the key symbol, the receiver is searching for an ALERT FM channel and is not able to receive messages.



- 3. AC-connector:** Shown when external (USB) power is available.
- 4. Battery condition:** The more indicators it shows, the more power the battery has left. When any of the three bottom battery symbols are visible replace batteries.

Push Buttons

The ALERT FM receiver is operated by four push buttons.



- **FRONT.** Use this button to go “back” in menus and to toggle radio sound on/off.
- **UP** (backside). Use to navigate up in menus and to increase radio volume when radio sound is on.
- **MIDDLE** (backside). Use to enter menu and confirm selected option.
- **DOWN** (backside). Use to navigate down in menus and to decrease radio volume when radio sound is on.

Alert Event

In case of an alert event the receiver will activate the siren, the LED-light will flash and the display will also be brightened for 1 minute. The message will be shown on the display.

To turn off the alarm press any button.

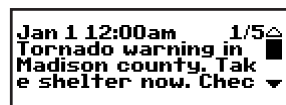
The LED-light will continue to flash until turned off. If the receiver is running on USB power the backlight display will also be turned on until the alarm is acknowledged.

Settings

Note that the ALERT FM receiver will receive the important alert messages without the need for any user settings as long as it is locked to an ALERT FM channel (indicated by the key symbol).



Messages



In the Messages menu previously received messages are shown. Up to 20 messages are stored in the receiver. The number of messages stored, as well as the current message number, are indicated at the top right corner. If the message is longer than 3 rows the arrow to the bottom right on the display is black and indicates possibility to scroll. Use the UP/DOWN buttons to scroll. Press the MIDDLE button to view the next message.

Addresses

With ALERT FM, messages can be sent to groups of receivers based upon their location or addresses. An address is a code stored in the receiver. All receivers with a matching address will receive a message sent to this address assuming that the receiver is properly powered (See Powering section above) and properly tuned to an FM station.

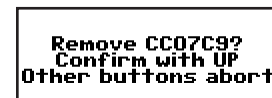
Please visit the My ALERT FM section of www.alertfm.com for the public address codes available in your area. A maximum of 30 addresses can be stored.

Show Addresses: Enter menu and navigate to “Addresses”, press MIDDLE button.



Enter new Address: Navigate to “Add new” and press MIDDLE button. To input the address, use the UP/DOWN buttons to scroll to desired alphanumeric digit (0-9, A-F) and then move to next digit with the MIDDLE button (FRONT button will go back to previous digit).

Note: Only enter Addresses approved by ALERT FM.



Remove an address: Navigate to the address to be removed using the UP and DOWN buttons. Press MIDDLE button. A confirm message is displayed. Press UP button to confirm removal or any other button to abort removal.

Note that there are factory configured addresses that cannot be removed. They are indicated with a padlock next to them when selected.

Services

All messages sent on the ALERT FM channel are part of some service. A service has messages of similar type, such as: alert service, weather service or a paging service.

As new services are introduced, their ID (a number) can be found on the My ALERT FM section of www.alertfm.com. To get access to its messages, the service ID must be entered into the receiver.

Services can be shown, added and removed in a similar way as Addresses, see previous section, by navigating the menu to “Services” and pressing MIDDLE button. A maximum of 30 Services can be stored on the device.

Note that there are factory configured services that cannot be removed. They are indicated with a padlock next to them when selected.

Places

The receiver can receive alerts based on geographical location. Up to 5 “places” can be added with associated ZIP-code and/or geographical position (longitude and latitude).

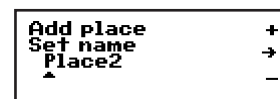


Diagram of the LCD display showing the 'Add place' menu. The screen displays 'Add place' at the top, 'Set name' in the middle, and 'Place2' at the bottom. To the right of 'Set name' is a right arrow, and to the right of 'Place2' is a minus sign.

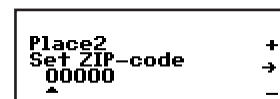


Diagram of the LCD display showing the 'Place2' menu. The screen displays 'Place2' at the top, 'Set ZIP-code' in the middle, and '00000' at the bottom. To the right of 'Set ZIP-code' is a right arrow, and to the right of '00000' is a minus sign.

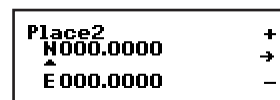


Diagram of the LCD display showing the 'Place2' menu. The screen displays 'Place2' at the top, 'N000.0000' in the middle, and 'E 000.0000' at the bottom. To the right of 'N000.0000' is a right arrow, and to the right of 'E 000.0000' is a minus sign.

Add a place:

1. Enter menu and navigate to “Places”, press MIDDLE button. Select “Add new” and press MIDDLE button.
2. Set the name by changing the characters with UP and DOWN buttons and preceding to the next character by pressing MIDDLE button (FRONT button will go back to previous character).
3. When done with the name of the place press MIDDLE button until asked to enter ZIP-code.
4. Enter ZIP-code by changing the digits with UP and DOWN buttons, and proceeding to the next digit by pressing MIDDLE button. When all digits have been entered, the place is added.

To set a geographical location of a place:

1. Navigate to the place that shall have a geo location and press MIDDLE button.
2. Navigate to “Change position” and press MIDDLE button.
3. Alter the geographical position by pressing UP and DOWN buttons and proceeding to the next digit by pressing MIDDLE button (FRONT button will go back to previous digit).

Longitude and latitude coordinates can be found e.g. by clicking in Google maps.

Settings

Backlight: Choose between 5 different backlight modes by pressing the UP and DOWN buttons.

Alert: Choose between 4 different signals for the alert siren by pressing the UP and DOWN buttons.

Radio

The ALERT FM Receiver will automatically tune to the best available station. It is however possible to force it to rescan the FM band in order to make a new complete search for the best signal.

Scan for stations: A scan is initiated by entering the menu, navigate to “Radio”, and press MIDDLE button. The lower right corner of the display will show “scan”, press FRONT button to start the scan.

When scanning, the receiver will search for FM stations and check them for an ALERT FM signal. This may take a few minutes.

Device Info

Select Device info in the menu to access version, production and serial numbers.

Maintenance

The ALERT FM Receiver is a highly advanced product and should be treated with the greatest care. If you follow the recommendations below, you will fulfill requirements for the warranty and the receiver should provide several years of useful service.

- Keep the receiver away from small children.
- Protect it from moisture. Fluids and moisture may contain substances that can corrode the receiver’s electronics.
- Avoid use in dusty and unclean environments.
- Don’t store in hot places. High temperatures can shorten the lifetime of electronics devices.
- Don’t store in cold places. When the receiver is warmed up to its normal temperature, there may be moisture inside the receiver that could damage the electronics. At temperatures below -10°C (-14°F), the receiver should be carried within your clothing to keep the LCD functioning.
- Don’t try to open the receiver. Unauthorized tampering with the receiver can damage it. Call ALERT FM Customer Service if your receiver needs to be repaired.
- Don’t drop or shake the receiver. If handled roughly, the electronics could be damaged.
- Don’t try to connect the receiver to incompatible devices. Incompatible devices may damage the electronics.
- Don’t use strong chemicals or detergents to clean the receiver. Instead use a soft moist cloth.

Using the Battery

- The battery should only be used for the purpose intended.
- Never use a damaged or worn-out battery.
- Don’t short-circuit the battery. Short-circuiting the battery may damage it.
- Always store the battery in a temperature range of 15°C to 25°C (59°F to 77°F).
- Never throw batteries into open fire. Dispose of them in an environmentally correct manner.

Limitation of Liability

Customer acknowledges that messages may be lost, incorrect, garbled or not received by the intended recipient due to circumstances that are beyond the control of GSS. Customer acknowledges that GSS has no liability at law or in equity for the failure of a message to reach its intended recipient. Customer acknowledges and agrees that, in the absence of willful misconduct by GSS, that GSS and its representatives shall not be responsible for any incidental, special, consequential, punitive or other damages including lost profits arising out of any messaging disruption, interruption, mistakes, omissions, delays, errors or defects in the service or transmission of messages.

Limited Warranty and Exclusions

GSS LLC provides a limited consumer hardware warranty to the original registered (non-commercial) consumer (the “Customer”) of ALERT FM products who registers the Product with the Company within ninety (90) days of purchase. This warranty is non-transferable and does not apply to any product used in any manner other than under normal intended customer use by an individual consumer.

Hardware

Subject to the exclusions, limitations and conditions stated, GSS LLC warrants that all units are free of defects in material and workmanship, under normal intended consumer (non-commercial) use, for a period of ninety (90) days from the original purchase date. GSS additionally warrants to the Customer that all ALERT FM hardware, accessories and components purchased from GSS, including but not limited to the Cables, Power Cords, and Batteries, will be free from defects in workmanship and materials, under normal customer use, for a period of ninety (90) days from the original purchase date.

Exclusive Remedies and Procedure

In the event of a defect in material or workmanship during the warranty period, GSS will, at its sole option, repair or replace the product at no charge to Customer for parts or labor. To obtain warranty service, Customer must contact the GSS Customer Service Center for a return authorization code, and return the unit shipping postpaid, with proof of the date of original purchase and Customer return address, to:

Warranty Returns
C/O: GSS
308 East Pearl Street, Suite 202
Jackson, MS 39201.

Shipping labels must contain the return authorization code. ANY shipments sent for warranty service WITHOUT the appropriate return authorization code will be refused and returned to the Customer at Customer's expense. GSS will not be responsible for any loss or damage to the product incurred while the product is in transit from Customer for repairs. Customer should, as a precaution, purchase adequate insurance for the unit while in transit. GSS shall not be responsible for any software, firmware, data, information, or memory data contained in, stored on, or integrated with any products returned to GSS for repair by the Customer, whether the products are under warranty or not.

GSS's only obligation under this warranty shall be, at GSS's sole discretion, to repair or replace the product or part with a comparable product or part, or if neither repair nor replacement is reasonably available, GSS may refund to Customer the purchase price paid for the product or part. Replacement products or parts may be new or reconditioned. Parts removed by the GSS shall become the sole property of GSS. GSS's repair or replacement of defective parts does not extend the term of this Limited Warranty, which shall expire upon the expiration of the applicable Consumer Limited Warranty period from the date of original purchase.

Severability Clause

If any provision of this Consumer Limited Warranty shall be held invalid, illegal or unenforceable, the validity, legality and enforceability of the remaining provisions shall not in any way be affected or impaired thereby, and all other provisions shall remain in full force and effect as if such invalid, illegal, or unenforceable provision had never been contained herein.

Limitations and Exclusions

This warranty excludes

- (1) cosmetic or physical damage to the surface of the product, including cracks or scratches on the LCD screen or outside casing;
- (2) damage caused by misuse, neglect, improper installation or testing, unauthorized attempts to modify the product, attempted servicing, except for battery replacement, by anyone other than an authorized service representative of GSS or any other cause beyond the range of intended use;
- (3) damage caused by accident, fire, water or liquids, power changes, other hazards, or acts of God;
- (4) use of the product with any non-ALERT FM device, component (such as chargers or connection cables) or service, if such device, component or service causes the problem;
- (5) use of this product for any non-consumer, commercial or rental purpose;
- (6) ALERT FM Software, installation software, or any other software used in conjunction with ALERT FM hardware.

Any third-party products, including software included with ALERT FM products, are not covered by this Consumer Limited Warranty, and the Company makes no representation or warranties on behalf of such third parties. Any warranty on such products is from the supplier or licensor of the third-party product.

THE FOREGOING WARRANTIES AND REMEDIES ARE EXCLUSIVE AND IN LIEU OF ALL OTHER WARRANTIES, EXPRESS OR IMPLIED, PERFORMANCE, ACCURACY, CORRESPONDENCE WITH DESCRIPTION, AND NONINFRINGEMENT, ALL OF WHICH ARE EXPRESSLY DISCLAIMED. IN NO EVENT SHALL GSS BE LIABLE, WHETHER IN CONTRACT OR TORT (INCLUDING NEGLIGENCE) FOR DAMAGES IN EXCESS OF THE PURCHASE PRICE OF THE PRODUCT, ACCESSORY OR SOFTWARE, OR FOR ANY INDIRECT, INCIDENTAL, SPECIAL, CONSEQUENTIAL, OR PUNITIVE DAMAGES OF ANY KIND OR LOSS OF REVENUE OR PROFITS, LOSS OF BUSINESS, LOSS OF INFORMATION OR DATA, SOFTWARE OR APPLICATIONS OR OTHER FINANCIAL LOSS ARISING OUT OF OR IN CONNECTION WITH THE ABILITY OR INABILITY TO USE THE PRODUCTS, ACCESSORIES OR SOFTWARE TO THE FULL EXTENT THESE DAMAGES MAY BE DISCLAIMED BY LAW. EVEN IF GSS HAS BEEN ADVISED OF THE POSSIBILITY OF SUCH DAMAGES, GSS'S ENTIRE LIABILITY SHALL BE LIMITED TO COSTS OF REPLACEMENT, REPAIR, OR REFUND OF THE PURCHASE PRICE PAID, AT THE SOLE OPTION OF THE COMPANY TO THE EXTENT THESE DAMAGES MAY BE SO LIMITED BY APPLICABLE LAW.

Some states and jurisdictions do not allow the limitation or exclusion of incidental or consequential damages, or limitation on the length of an implied warranty, so the above limitations or exclusions may not apply to you. This warranty may give you specific legal rights, and you may also have other rights that vary from state to state and from one jurisdiction to another.

Governing Law

This Registered User Limited Warranty shall be governed by the laws of the State of Mississippi, U.S.A. and by the laws of the United States, excluding their conflicts of law principles. The United Nations Convention on Contracts for the International Sale of Goods is hereby excluded in its entirety from application to this Limited Warrantee.

THIS DEVICE COMPLIES WITH PART 15 OF THE FCC RULES. OPERATION IS SUBJECT TO THE FOLLOWING TWO CONDITIONS: (1) THIS DEVICE MAY NOT CAUSE HARMFUL INTERFERENCE, AND (2) THIS DEVICE MUST ACCEPT ANY INTERFERENCE RECEIVED, INCLUDING INTERFERENCE THAT MAY CAUSE UNDESIRABLE OPERATION.

NOTE: AXENTIA TECHNOLOGIES AB IS NOT RESPONSIBLE FOR ANY CHANGES OR MODIFICATIONS NOT EXPRESSLY APPROVED BY THE PARTY RESPONSIBLE FOR COMPLIANCE. SUCH MODIFICATIONS COULD VOID THE USER'S AUTHORITY TO OPERATE THE EQUIPMENT.

NOTE: This equipment has been tested and found to comply with the limits for a Class B digital device, pursuant to part 15 of the FCC Rules. These limits are designed to provide reasonable protection against harmful interference in a residential installation. This equipment generates uses and can radiate radio frequency energy and, if not installed and used in accordance with the instructions, may cause harmful interference to radio communications. However, there is no guarantee that interference will not occur in a particular installation. If this equipment does cause harmful interference to radio or television reception, which can be determined by turning the equipment off and on, the user is encouraged to try to correct the interference by one or more of the following measures:

- Reorient or relocate the receiving antenna.
- Increase the separation between the equipment and receiver.
- Connect the equipment into an outlet on a circuit different from that to which the receiver is connected.
- Consult the dealer or an experienced radio/TV technician for help.