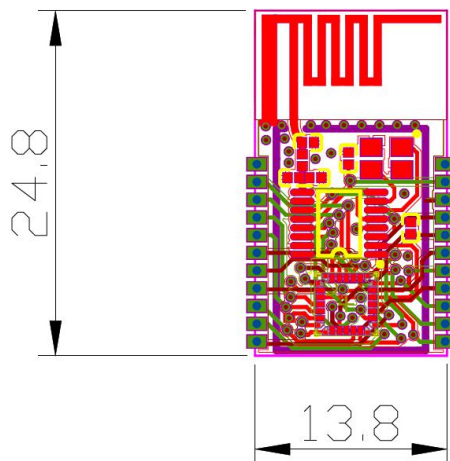


Product parameters:

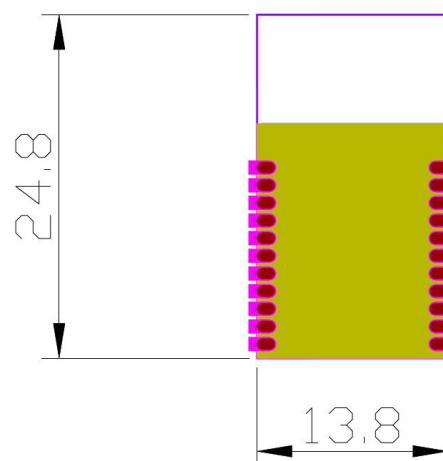
Category	Item	Parameter
Wireless parameters	Frequency range	2.442GHz
	Transmitting power	2dBm
	Receiving sensitivity	-96dBm@62.5Kbps
	Antenna type	Onboard antenna
Hardware parameters	Data interface	SPI
	Operating Volt	3.3V
	Supplying current	≥50mA
	Power consumption (Typical)	Modem Sleep: ~20mA Light Sleep: ~2mA Deep Sleep: ~0.02mA
	Operating Temperature	-40°C ~ +85°C
	Size	13.8x24.8x2.0mm

Package size:

TOP:



Bottom:



FCC Statement

This device complies with part 15 of the FCC Rules. Operation is subject to the following two conditions: (1) This device may not cause harmful interference, and (2) this device must accept any interference received, including interference that may cause undesired operation.

Changes or modifications not expressly approved by the party responsible for compliance could void the user's authority to operate the equipment.

NOTE: This equipment has been tested and found to comply with the limits for a Class B digital device, pursuant to Part 15 of the FCC Rules.

These limits are designed to provide reasonable protection against harmful interference in a residential installation. This equipment generates, uses and can radiate radio frequency energy and, if not installed and used in accordance with the instructions, may cause harmful interference to radio communications. However, there is no guarantee that interference will not occur in a particular installation. If this equipment does cause harmful interference to radio or television reception, which can be determined by turning the equipment off and on, the user is encouraged to try to correct the interference by one or more of the following

measures:

- Reorient or relocate the receiving antenna.
- Increase the separation between the equipment and receiver.
- Connect the equipment into an outlet on a circuit different from that to which the receiver is connected.
- Consult the dealer or an experienced radio/TV technician for help.

FCC Radiation Exposure Statement

This modular complies with FCC RF radiation exposure limits set forth for an uncontrolled environment. This transmitter must not be co-located or operating in conjunction with any other antenna or transmitter.

If the FCC identification number is not visible when the module is installed inside another device, then the outside of the device into which the module is installed must also display a label referring to the enclosed module. This exterior label can use wording such as the following: "Contains Transmitter Module FCC ID: 2AR71-RF8920N-M Or Contains FCC ID: 2AR71-RF8920N-M"

When the module is installed inside another device, the user manual of this device must contain the following warning statements:

1. This device complies with Part 15 of the FCC Rules. Operation is subject to the following two conditions:

(1) This device may not cause harmful interference.

(2) This device must accept any interference received, including interference that may cause undesired operation.

2. Changes or modifications not expressly approved by the party responsible for compliance could void the user's authority to operate the equipment.

The devices must be installed and used in strict accordance with the manufacturer's instructions as described in the user documentation that comes with the product

Any company of the host device which installs this modular with limit modular approval should perform the test of radiated emission and spurious emission according to FCC part 15C : 15.247 and 15.209 requirement, Only if the test result complies with FCC part 15C : 15.247 and 15.209 requirement, then the host can be sold legally.