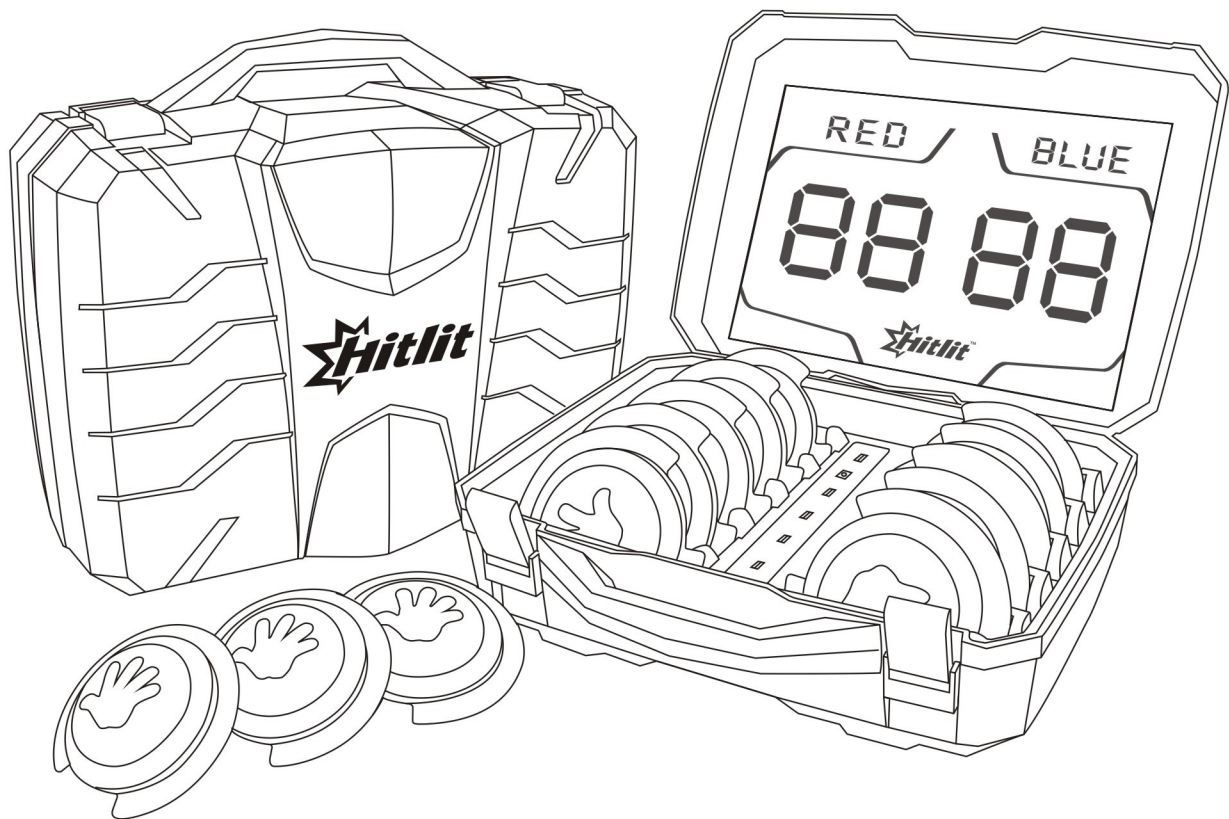




INSTRUCTION MANUAL



THANK YOU FOR CHOOSING OUR PRODUCT

Please read the manual before using and keep for future reference.

This product is an interactive game device that can be installed in a variety of settings: on a desktop or wall, within inflatables, etc. It can be used in indoor / outdoor playgrounds, sports venues, entertainment centers and training centers.

1. Contents:

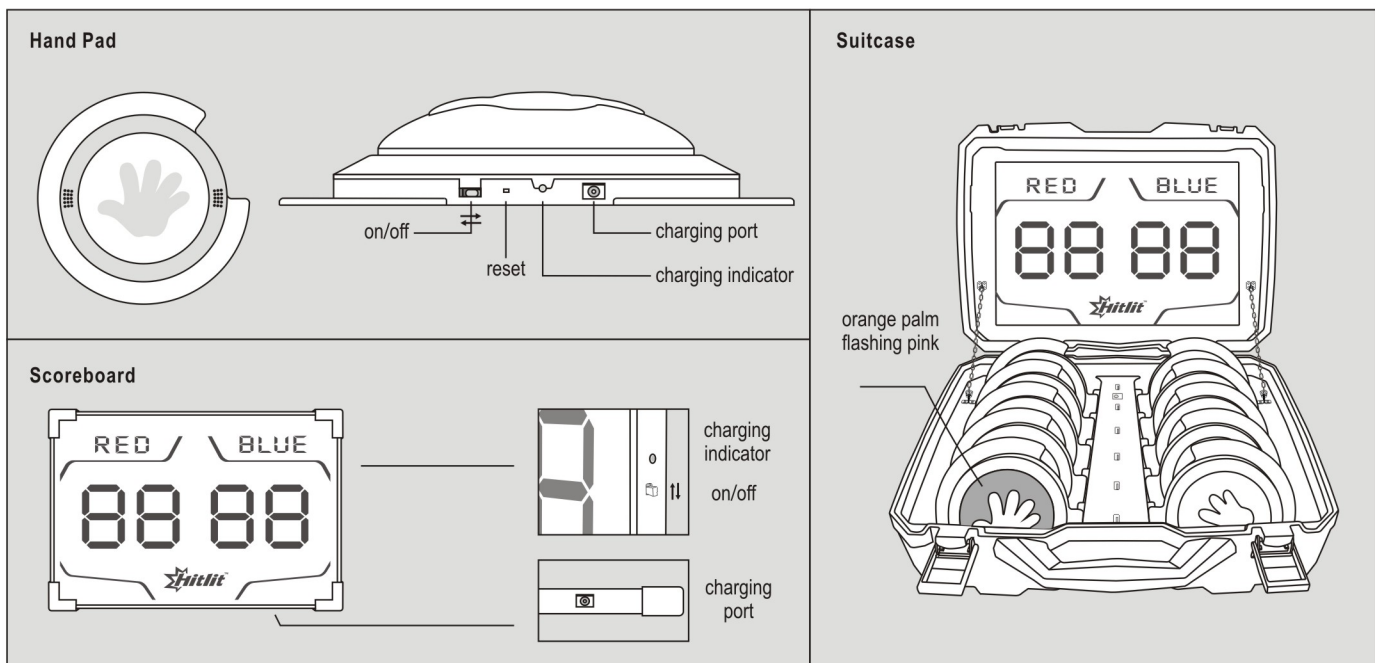
Check to make sure you have each item.

Main Components: scoreboard x1pc / hand pad x 10pcs / mobile speaker x1pc / suitcase (with charging system) x1pc

Accessories: 5V power adapter kit × 1pc / hand pad installing patch × 10pcs / scoreboard installing patch × 1pc

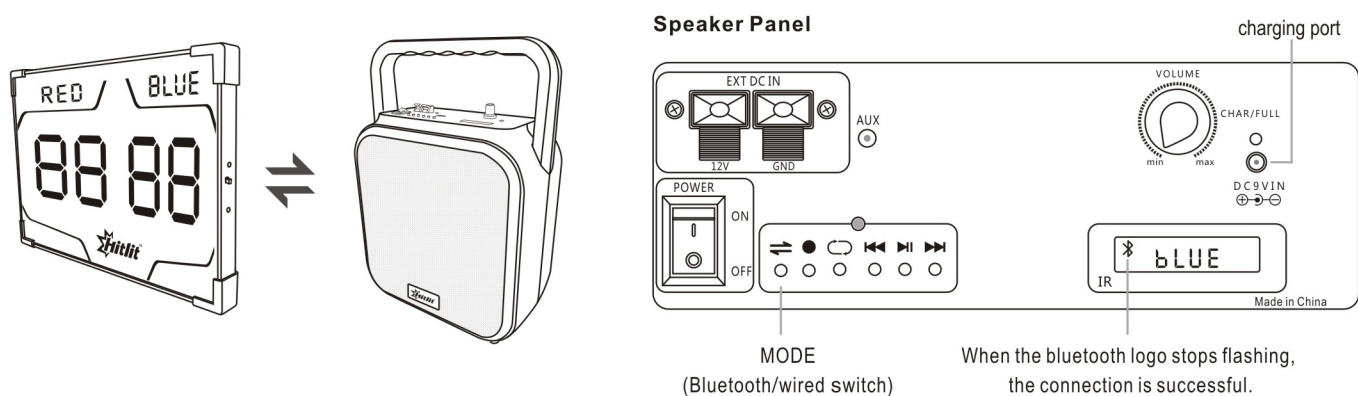
2. Basic Operation:

2.1 Connect the scoreboard to the hand pads



Turn on the scoreboard and hand pads (wait for 20 seconds while they connect). The pad with the orange palm will flash pink while the other 9 hand pads will flash other colors.

2.2 Connect the scoreboard to the mobile speaker

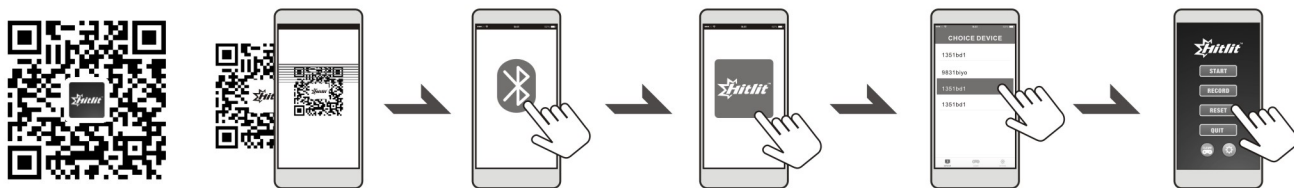


Turn on the speaker (it will default to bluetooth mode) and scoreboard, they will connect automatically. (When the bluetooth connection is not stable, it is recommended to use audio cable with wired connection.)

2.3 Control the game via Hitlit APP

Scan the QR code and download the APP. Turn on the bluetooth function in your phone and run the APP. Search and connect the scoreboard " Hitlit-CN-xxxxxxx " to enter the game control interface .

- "START": Starts the game;
- "STOP": Stops the game;
- "RECORD": Keeps score of the game ;
- "RESET": Clears and resets the scoreboard, clears the highest score on the APP;
- "QUIT": Ends the connection;
- "GAME": Select the game to play;
- " ⚙️ " : Add hand pad , Electricity query , Restart, etc.



- PS: 1. Scan the QR code to install the application.
 2. For IOS, the Hitlit application can be searched and downloaded directly from the app store.
 3. For Androids, authorization is needed for the application to work.
 4. Some phones may need to turn on the GPS.

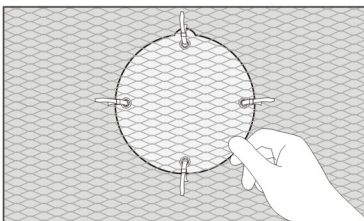
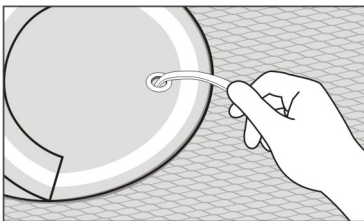
2.4 Hand pad

When the scoreboard and hand pads are connected, press the orange pad (flashing pink) to start the game. Press and hold for 5 seconds to switch the game mode (if connected, the speaker will show a reminder) .

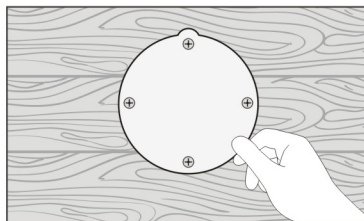
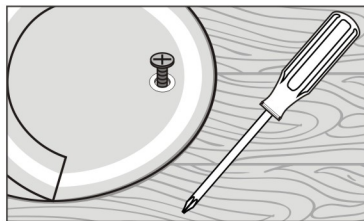
3. Installation:

3.1 Install the hand pad patches (Select the appropriate method to install)

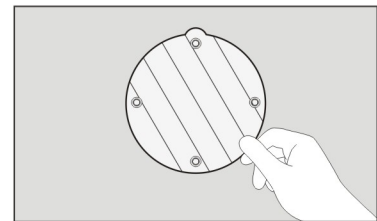
a. Attach to netting with string



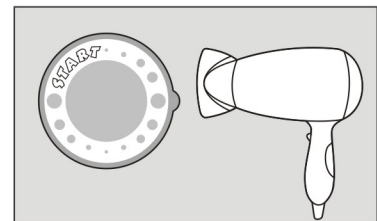
b. Attach to a board with screws



c. Attach to inflatables / other appliances with glue

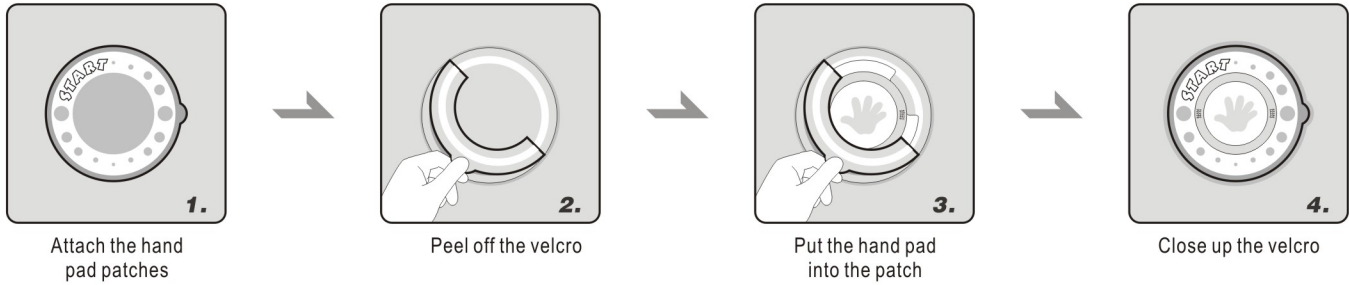


Use glue on the back of the hand pad patches



Dry the glue with a hair dryer

3.2 Installation



1. Attach the hand pad patches

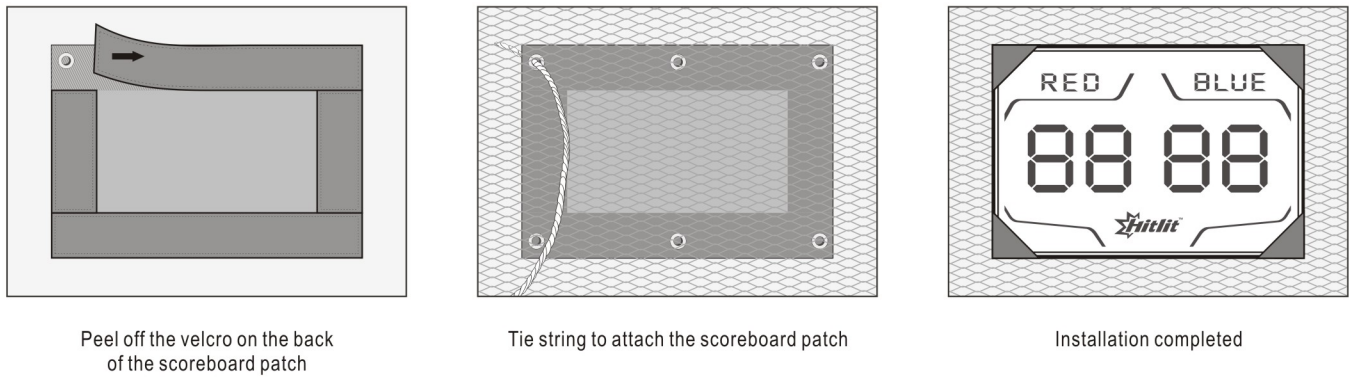
2. Peel off the velcro

3. Put the hand pad into the patch

4. Close up the velcro

3.3 Install the scoreboard patch

a. Attach to netting with string

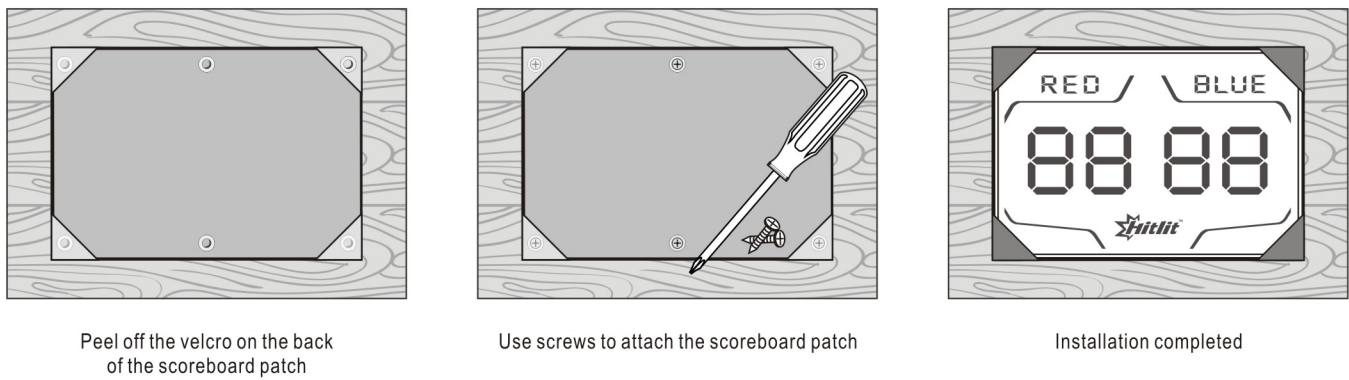


Peel off the velcro on the back of the scoreboard patch

Tie string to attach the scoreboard patch

Installation completed

b. Attach to a board with screws

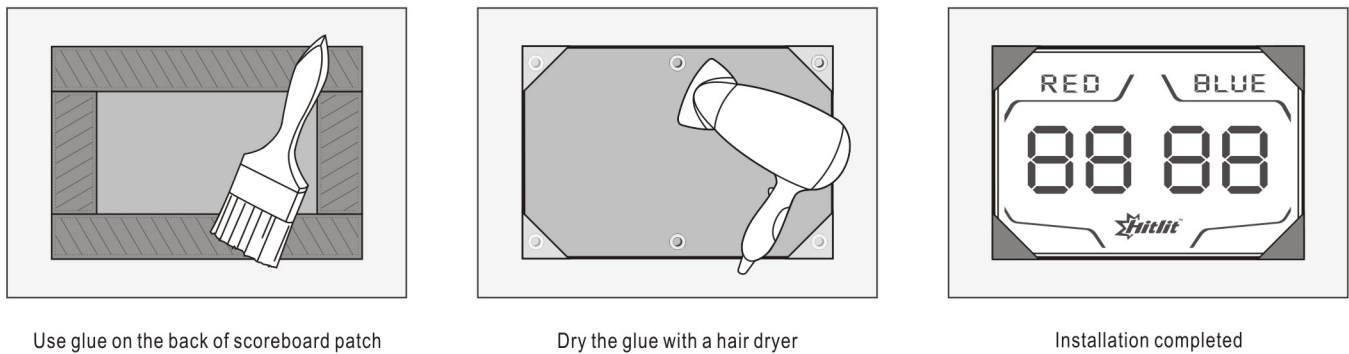


Peel off the velcro on the back of the scoreboard patch

Use screws to attach the scoreboard patch

Installation completed

c. Attach to inflatables / other appliances with glue



Use glue on the back of scoreboard patch

Dry the glue with a hair dryer

Installation completed

4. Playing instructions:

4.1 Game modes

A: Light Speed B: Astro Race C: Treasure Punch

4.2 How to switch game mode

Method 1: Press and hold the orange pad (flashing pink) for 5 seconds to switch the game mode.

Method 2: Click the "GAME" button on Hitlit APP to select the game mode.

A. Light Speed

Players are divided into a red and blue team. Players have one minute to touch each hand pad that lights up in their color. Each touch of your color scores a point, no points for yellow lights. Team with the highest score wins.

B. Astro Race

Players are divided into a red and blue team. Teams race to touch each of their colored pads within 2 minutes of each other. Fastest team to touch all their flashing hand pads wins the game.

C. Treasure Punch

Players are divided into a red and blue team. When the game starts, each hand pad for the red and blue team will flash. Players need to find and touch their hidden flashing pads within 2 minutes of each other. Fastest team to touch all their flashing hand pads wins the game.

(PS: 20 hand pad packs can be used to accommodate larger spaces.)

5. How to charge:

Please charge the scoreboard and hand pads in the suitcase.

A. Use the suitcase charging cable to connect the suitcase to an outlet.

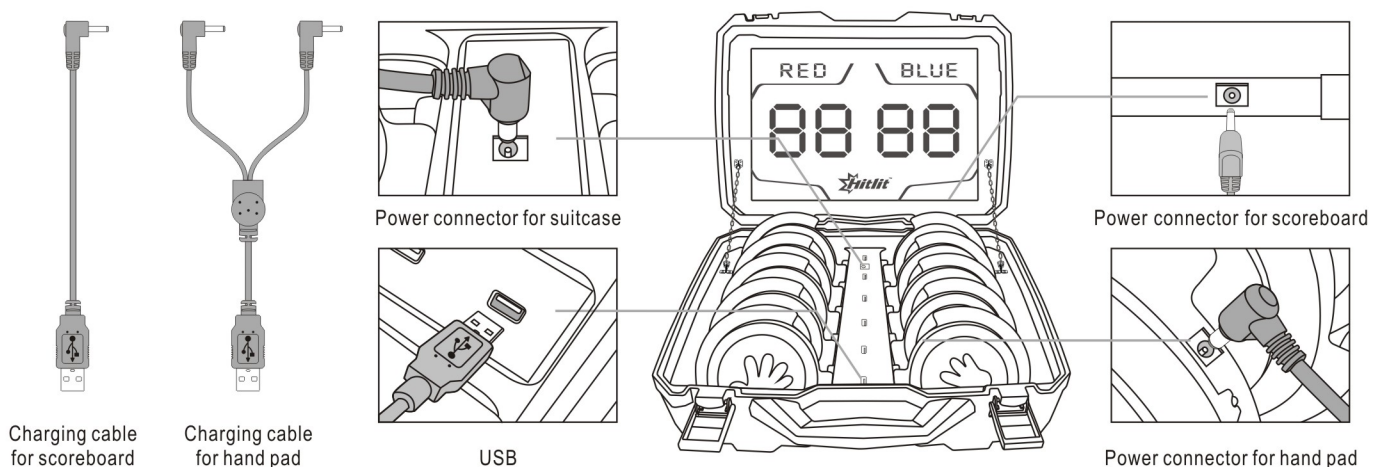
B. Use the USB cables to connect the scoreboard and hand pads to the suitcase charging panel.

C. Use the speaker charging cable to connect the speaker to an outlet.

D. The indicator lights on the hand pads and scoreboard will be red while charging and turn green when fully charged.

E. Hand pads, scoreboard, speaker take 7-8 hours to fully charge. Scoreboard and speaker can last for 11-12 hours, Hand pads can last for 12-40 hours depending on usage frequency.

F. When charging, please turn off all hand pads and scoreboard.





6. Notes:

- 6.1 The speaker should be placed within 8 meters of the scoreboard to ensure a stable signal connection.
- 6.2 The mobile Hitlit APP and scoreboard should be placed within 8 meters of each other to ensure a stable signal connection.
- 6.3 Please check the cables, plugs, shells and other parts regularly. If there is any damage, please stop usage until repaired.
- 6.4 The scoreboard, hand pads and speaker contain batteries which must be charged every 6 months to avoid battery damage.
- 6.5 Most malfunctions are caused by low battery volume. Use the Hitlit APP to check the battery volume.

7. Warning:

This equipment has been tested and found to comply with the limits for a Class B digital device, pursuant to part 15 of the FCC Rules. These limits are designed to provide reasonable protection against harmful interference in a residential installation. This equipment generates, uses and can radiate radio frequency energy and, if not installed and used in accordance with the instructions, may cause harmful interference to radio communications. However, there is no guarantee that interference will not occur in a particular installation.

If this equipment does cause harmful interference to radio or television reception, which can be determined by turning the equipment off and on, the user is encouraged to try to correct the interference by one or more of the following measures:

- Reorient or relocate the receiving antenna.
- Increase the separation between the equipment and receiver.
- Connect the equipment into an outlet on a circuit different from that to which the receiver is connected.
- Consult the dealer or an experienced radio/TV technician for help.

MODIFICATION: Any changes or modifications not expressly approved by the grantee of this device could void the user's authority to operate the device.

8. Warranty repair:

We provide a one year warranty for the entire Hitlit innovative play solution set.
Please contact customer service on our website for advice on the quickest way to resolve the problem.

9. Manufacturer information:

Manufacturer: Swiftech Company Limited
Address: Dongcheng Industrial Zone, Xiping Road, Minzhong Town, Zhongshan City, Guangdong Province, China
Tel: +86 760-2810 8960

Warning!

Adult installation required. Use under adult supervision.
To be charged by adults only.
Contains small parts, not suitable for children under 3 years.

