

Coinangel Electronic wallet V1.5

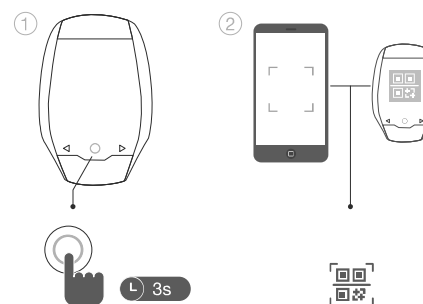
User Manual

1 Download Coinangel App

Please scan the QR code to download Coinangel App



2 Device connection



3-1 Initialize

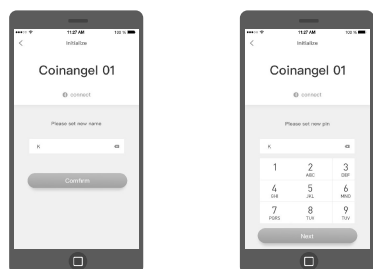
If you already have a wallet's mnemonic, skip to step 4-1



① Click "Initialize" to create the wallet

② Click "O" on your wallet save 24 words in order

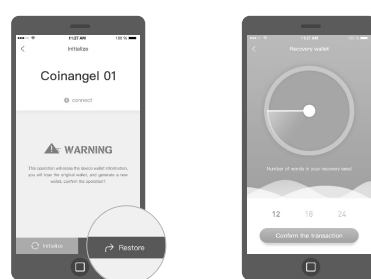
3-2 Initialize



③ Set device name

④ Set the PIN twice (PIN no less than 6 digits)

4-1 Restore



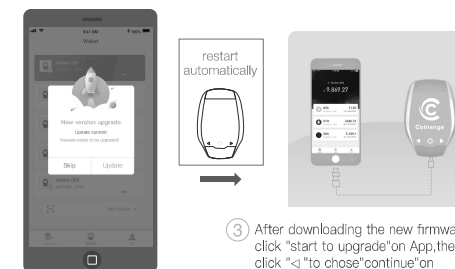
① In the APP, click Restore and select the number of mnemonic words to be restored

4-2 Restore



② After confirmation in the wallet, type in mnemonic word of the specified serial number according to the prompt of the hardware wallet

5 Firmware Upgrade (for Android system only)



① Please make sure your cellphone connected with Coinangel wallet via Bluetooth ALWAYS.

② If there is a pop-up window for upgrading on App from your cellphone, please click "Update"

③ After downloading the new firmware, click "start to upgrade" on App, then click "O" to choose "continue" on Coinangel wallet. click "O" to confirm.

④ Connected your cellphone and Coinangel wallet with the USB cable (in package), click "confirm" on App, then click "O" on wallet to install new firmware, later click "continue" on wallet - click "O" to finish installation.

FCC Warning Statement

This equipment has been tested and found to comply with the limits for a Class B digital device, pursuant to part 15 of the FCC Rules. These limits are designed to provide reasonable protection against harmful interference in a residential installation. This equipment generates, uses and can radiate radio frequency energy and, if not installed and used in accordance with the instructions, may cause harmful interference to radio communications. However, there is no guarantee that interference will not occur in a particular installation. If this equipment does cause harmful interference to radio or television reception, which can be determined by turning the equipment off and on, the user is encouraged to try to correct the interference by one or more of the following measures:

- Reorient or relocate the receiving antenna.
- Increase the separation between the equipment and receiver.
- Connect the equipment into an outlet on a circuit different from that to which the receiver is connected.
- Consult the dealer or an experienced radio/TV technician for help.

Caution: Any changes or modifications to this device not explicitly approved by manufacturer could void your authority to operate this equipment.

This device complies with part 15 of the FCC Rules. Operation is subject to the following two conditions: (1) This device may not cause harmful interference, and (2) this device must accept any interference received, including interference that may cause undesired operation.

The device has been evaluated to meet general RF exposure requirement. The device can be used in portable exposure condition without restriction.