



FCC ID: 2AR5RRMX44BT  
Report No.: T210713N01-RP1-1

Ref. No.: T200610N03-RP1-1

Page: 1 / 25  
Rev.: 00

**FCC 47 CFR PART 15 SUBPART C AND ANSI C63.10: 2013  
TEST REPORT  
( Class II Permissive Change Report )  
For**

**DJ MIXER**

**Model: RMX-44 BT**

**Data Applies To: N/A**

**Brand Name: RELOOP**

Issued for

**Global Distribution GmbH & Co. KG  
Schuckertstr. 28 , 48153 Muenster , Germany**

Issued By

**Compliance Certification Services Inc.**

**Tainan Lab.**

**No.8, Jiucengling, Xinhua Dist.,  
Tainan City, Taiwan**

**Issued Date: September 24, 2021**

---

**Note:** This report shall not be reproduced except in full, without the written approval of Compliance Certification Services Inc. This document may be altered or revised by Compliance Certification Services Inc. personnel only, and shall be noted in the revision section of the document. The client should not use it to claim product endorsement by TAF or any government agencies. The test results in the report only apply to the tested sample.

Unless otherwise stated the results shown in this test report refer only to the sample(s) tested and such sample(s) are retained for 90 days only.  
除非另有說明，此報告結果僅對測試之樣品負責，同時此樣品僅保留90天。本報告未經本公司書面許可，不可部份複製。

This document is issued by the Company subject to its General Conditions of Service printed overleaf, available on request or accessible at <http://www.sgs.com.tw/Terms-and-Conditions> and, for electronic format documents, subject to Terms and Conditions for Electronic Documents at <http://www.sgs.com.tw/Terms-and-Conditions>. Attention is drawn to the limitation of liability, indemnification and jurisdiction issues defined therein. Any holder of this document is advised that information contained hereon reflects the Company's findings at the time of its intervention only and within the limits of client's instruction, if any. The Company's sole responsibility is to its Client and this document does not exonerate parties to a transaction from exercising all their rights and obligations under the transaction documents. This document cannot be reproduced, except in full, without prior written approval of the Company. Any unauthorized alteration, forgery or falsification of the content or appearance of this document is unlawful and offenders may be prosecuted to the fullest extent of the law.

**REVISION HISTORY**

Rev.	Issue Date	Revisions	Effect Page	Revised By
00	September 24, 2021	See the following note rev.00	ALL	Gina Lin

**Note:**

※ *Rev.00 Issue Date: September 24, 2021  
Revised Class II Permissive Change Report and the description is shown in page 7. (3.2 DESCRIPTION OF CLASS II CHANGE)*

## TABLE OF CONTENTS

TITLE	PAGE NO.
<b>1. TEST REPORT CERTIFICATION .....</b>	<b>4</b>
<b>2. TEST RESULT SUMMARY.....</b>	<b>5</b>
<b>3. EUT DESCRIPTION .....</b>	<b>6</b>
3.1 DESCRIPTION OF EUT & POWER.....	6
<b>4. DESCRIPTION OF TEST MODES .....</b>	<b>8</b>
<b>5. TEST METHODOLOGY .....</b>	<b>10</b>
<b>6. FACILITIES AND ACCREDITATIONS.....</b>	<b>11</b>
6.1 FACILITIES .....	11
6.2 EQUIPMENT .....	11
6.3 LABORATORY ACCREDITATIONS LISTINGS.....	11
6.4 TABLE OF ACCREDITATIONS AND LISTINGS .....	12
6.5 MEASUREMENT EQUIPMENT USED .....	13
6.6 MEASURING INSTRUMENT CALIBRATION .....	14
6.7 MEASUREMENT UNCERTAINTY .....	14
<b>7. SETUP OF EQUIPMENT UNDER TEST.....</b>	<b>15</b>
7.1 SETUP CONFIGURATION OF EUT .....	15
7.2 SUPPORT EQUIPMENT.....	15
<b>8. APPLICABLE LIMITS AND TEST RESULTS.....</b>	<b>17</b>
8.1 RADIATED EMISSIONS .....	17
8.8.1 TRANSMITTER RADIATED SUPURIOUS EMSSIONS .....	17
8.8.2 WORST-CASE RADIATED EMISSION BELOW 1 GHZ.....	21
<b>APPENDIX I PHOTOGRPHS OF TEST SETUP .....</b>	<b>24</b>

# 1. TEST REPORT CERTIFICATION

<b>Applicant</b>	:	<b>Global Distribution GmbH &amp; Co. KG</b> Schuckertstr. 28 , 48153 Muenster , Germany
<b>Manufacturer</b>	:	<b>Global Distribution GmbH &amp; Co. KG</b> Schuckertstr. 28 , 48153 Muenster , Germany
<b>Equipment Under Test</b>	:	DJ MIXER
<b>Model Number</b>	:	RMX-44 BT
<b>Data Applies To</b>	:	N/A
<b>Brand Name</b>	:	RELOOP
<b>Date of Test</b>	:	July 21, 2021

APPLICABLE STANDARD	
STANDARD	TEST RESULT
FCC Part 15 Subpart C AND ANSI C63.10: 2013	PASS
Statements of Conformity	
Determining compliance shall be based on the results of the compliance measurement, not taking into account measurement instrumentation uncertainty.	

**We hereby certify that:**

The above equipment was tested by Compliance Certification Services Inc. The test data, data evaluation, test procedures, and equipment configurations shown in this report were made in accordance with the procedures given in **ANSI C63.10: 2013** and the energy emitted by the sample EUT tested as described in this report is in compliance with the requirements of FCC Rules Part 15.207, 15.209, 15.247.

The test results of this report relate only to the tested sample EUT identified in this report.

*Approved by:*




---

**Eric Huang**  
Section Manager

## 2. TEST RESULT SUMMARY

FCC Standard Section	Report Section	Test Item	Result
15.203	3	ANTENNA REQUIREMENT	Pass
15.247(a)(1)	-	20dB BANDWIDTH	-
15.247(b)(1)	-	MAXIMUM PEAK OUTPUT POWER	-
15.247(a)(1)	-	HOPPING CHANNEL SEPARATION	-
15.247(a)(1)(iii)	-	NUMBER OF HOPPING FREQUENCY USED	-
15.247(a)(1)(iii)	-	DWELL TIME	-
-	-	DUTY CYCLE	-
15.247(d)	-	CONDUCTED SPURIOUS EMISSION	-
15.247(d)	8.1	RADIATED EMISSIONS	Pass
15.207(a)	-	POWERLINE CONDUCTED EMISSIONS	-

### 3. EUT DESCRIPTION

#### 3.1 DESCRIPTION OF EUT & POWER

<b>Product</b>	DJ MIXER
<b>Model Number</b>	RMX-44 BT
<b>Data Applies To</b>	N/A
<b>Brand Name</b>	RELOOP
<b>Identify Number</b>	T210713N01
<b>Received Date</b>	July 13, 2021
<b>Reported Date</b>	August 27, 2021
<b>Frequency Range</b>	2402MHz ~ 2480MHz
<b>Transmit Peak Power</b>	GFSK : 0.47dBm / 1.11mW 8DPSK: 1.39dBm / 1.38mW
<b>Channel Spacing</b>	1MHz
<b>Transmit Data Rate</b>	GFSK Mode : 1 Mbps 4/πDQPSK Mode : 2-3Mbps 8DPSK Mode : 24Mbps
<b>Modulation Type</b>	GFSK、π/4DQPSK、8DPSK
<b>Number of Channels</b>	79 Channels
<b>EUT Power Supply</b>	AC 100-240V, 0.8A, 50/60Hz
<b>Antenna Type</b>	Manufacturer: Sunitec Type: PCB Antenna Model: BM20A Gain: 1.78 dBi
<b>Firmware Version</b>	V1.0
<b>Hardware Version</b>	V1.0
<b>Software Version</b>	V1.0

Report No.: T210713N01-RP1-1

Ref. No.: T200610N03-RP1-1

**Power Adapter :**

No.	Manufacturer	Model No.	Power Input	Power Output
1	Hon-Kwang Electric Co., Ltd.	HK-CW-120A200-CP	AC 100-240V, 50/60Hz, 0.8A	DC 12.0V, 2.0A, 24.0W
2	SHENZHEN FUJIA APPLIANCE CO., LTD.	FJ-SW1202000N	AC 100-240V, 50/60Hz, 0.6A	DC 12V, 2.0A, 24.0W

**Remark:**

1. The sample selected for test was production product and was provided by manufacturer.
2. This submittal(s) (test report) is intended for **FCC ID: 2AR5RRMX44BT** filing to comply with Section 15.207, 15.209 and 15.247 of the FCC Part 15, Subpart C Rules.
3. For more details, please refer to the User's manual of the EUT.

### 3.2 DESCRIPTION OF CLASS II CHANGE

The major change filed under this application is:

Updated RAD (Below 1GHz) test data for verification test of new adapter (model: FJ-SW1202000N).

Since the above changes do not influence the RF characteristics, after evaluated, the testing items of the data could be used and showed as original application document reports (report number: T200610N03-RP1-1).

## 4. DESCRIPTION OF TEST MODES

The EUT had been tested under operating condition.

There are three channels have been tested as following :

Channel	Frequency (MHz)
Low	2402
Middle	2441
High	2480

### Radiated Emission Test (Below 1 GHz):

- Pre-Scan has been conducted to determine the worst-case mode from all possible combinations between available modulations, data rates and antenna ports (if EUT with antenna diversity architecture).
- Following channel(s) was (were) selected for the final test as listed below.

Normal Operation

### Radiated Emission Test (Above 1 GHz):

- Pre-Scan has been conducted to determine the worst-case mode from all possible combinations between available modulations, data rates and antenna ports (if EUT with antenna diversity architecture).
- Following channel(s) was (were) selected for the final test as listed below.

Tested Channel	Modulation Technology	Modulation Type	Packet Type
Low, Mid, High	FHSS	GFSK	DH5
Low, Mid, High	FHSS	8-DPSK	3-DH5



**Bandedge Measurement :**

- Pre-Scan has been conducted to determine the worst-case mode from all possible combinations between available modulations, data rates and antenna ports (if EUT with antenna diversity architecture).
- Following channel(s) was (were) selected for the final test as listed below.

Tested Channel	Modulation Technology	Modulation Type	Packet Type
Low, High	FHSS	GFSK	DH5
Low, High	FHSS	8-DPSK	3-DH5

**Antenna Port Conducted Measurement :**

- Pre-Scan has been conducted to determine the worst-case mode from all possible combinations between available modulations, data rates and antenna ports (if EUT with antenna diversity architecture).
- Following channel(s) was (were) selected for the final test as listed below.

Tested Channel	Modulation Technology	Modulation Type	Packet Type
Low, Mid, High	FHSS	GFSK	DH5
Low, Mid, High	FHSS	8-DPSK	3-DH5

## 5. TEST METHODOLOGY

The tests documented in this report were performed in accordance with ANSI C63.10 : 2013 and FCC CFR 47 15.207, 15.209 and 15.247.

## 6. FACILITIES AND ACCREDITATIONS

### 6.1 FACILITIES

All measurement facilities used to collect the measurement data are located at

No.8, Jiucengling, Xinhua Dist., Tainan City 712, Taiwan (R.O.C.)

The sites are constructed in conformance with the requirements of ANSI C63.7, ANSI C63.10 and CISPR Publication 22.

### 6.2 EQUIPMENT

Radiated emissions are measured with one or more of the following types of linearly polarized antennas: tuned dipole, bi-conical, log periodic, bi-log, and/or ridged waveguide, horn. Spectrum analyzers with pre-selectors and quasi-peak detectors are used to perform radiated measurements.

Conducted emissions are measured with Line Impedance Stabilization Networks and EMI Test Receivers.

Calibrated wideband preamplifiers, coaxial cables, and coaxial attenuators are also used for making measurements.

All receiving equipment conforms to CISPR Publication 16-1, "Radio Interference Measuring Apparatus and Measurement Methods."

### 6.3 LABORATORY ACCREDITATIONS LISTINGS

The test facilities used to perform radiated and conducted emissions tests are accredited by Taiwan Accreditation Foundation for the specific scope of accreditation under Lab Code: 1109 to perform Electromagnetic Interference tests according to FCC PART 15 AND CISPR 22 requirements. No part of this report may be used to claim or imply product endorsement by TAF or any agency of the Government. In addition, the test facilities are listed with Federal Communications Commission (registration no: TW1109).

## 6.4 TABLE OF ACCREDITATIONS AND LISTINGS

Our laboratories are accredited and approved by the following approval agencies according to ISO/IEC 17025.

<b>Taiwan</b>	TAF
---------------	-----

The measuring facility of laboratories has been authorized or registered by the following approval agencies.

<b>Canada</b>	Industry Canada (ISED#: 2324H)
<b>Germany</b>	TUV NORD
<b>Taiwan</b>	BSMI
<b>USA</b>	FCC
<b>Japan</b>	VCCI

Copies of granted accreditation certificates are available for downloading from our web site, <http://www.ccsrf.com>

## 6.5 MEASUREMENT EQUIPMENT USED

Chamber 966 Room (Radiation Test)					
Name of Equipment	Manufacturer	Model	Serial Number	Calibration Date	Calibration Due
Active Loop Antenna	ETS-LINDREN	6502	8905-2356	08/02/2019	08/01/2021
Bilog Antenna With 6dB Attenuator	SUNOL SCIENCES & EMCI	JB1 & AT-N0681	A070506-1 & AT-N0681	09/14/2020	09/13/2021
Cable	Suhner	SUCOFLEX104P EA	20520/4PEA&O6	01/29/2021	01/28/2022
EMI Test Receiver	R&S	ESCI	100960	02/05/2021	02/04/2022
Type N coaxial cable	Suhner	CHA9513	6	01/19/2021	01/18/2022
<b>Software</b>	Excel(ccs-o6-2020 v1.1) , e3(v6.101222)				

## 6.6 MEASURING INSTRUMENT CALIBRATION

The measuring equipment utilized to perform the tests documented in this report has been calibrated in accordance with the manufacturer’s recommendations, and is traceable to recognized national standards.

## 6.7 MEASUREMENT UNCERTAINTY

Where relevant, the following measurement uncertainty levels have been estimated for tests performed on the apparatus:

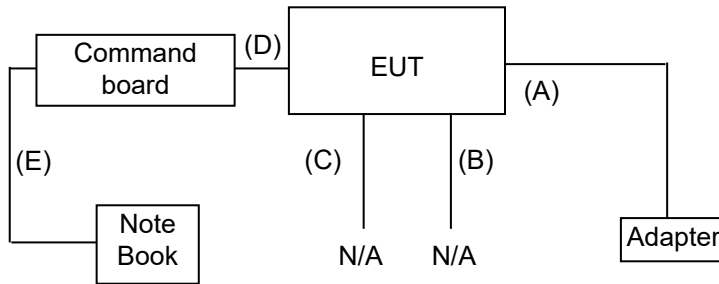
PARAMETER	UNCERTAINTY
Radiated Emission, 30 to 200 MHz Test Site : CB966	±3.1dB
Radiated Emission, 200 to 1000 MHz Test Site : CB966	±2.7dB
Radiated Emission, 1 to 6 GHz	± 2.7dB
Radiated Emission, 6 to 18 GHz	± 2.7dB
Radiated Emission, 18 to 26.5 GHz	± 2.7dB
Radiated Emission, 26 to 40 GHz	± 3.7dB
Power Line Conducted Emission	± 2.0dB

This measurement uncertainty is confidence of approximately 95%, k=2

## 7. SETUP OF EQUIPMENT UNDER TEST

### 7.1 SETUP CONFIGURATION OF EUT

RF



### 7.2 SUPPORT EQUIPMENT

For RF test

No.	Product	Manufacturer	Model No.	Certify No.	Signal cable
1	Note Book	Acer	AS 3830TG	DoC	Power cable, unshd, 1.6m

No.	Signal cable description	
A	Power	Unshielded, 1.5m 1 pcs.
B	MIC	Unshielded, 0.8m 2 pcs.
C	Audio	Unshielded, 1.0m 13 pcs.
D	Command	Unshielded, 0.3m 1 pcs.
E	USB	Shielded, 1.7m 1 pcs with 1 core.

**Note:**

- 1) All the equipment/cables were placed in the worst-case configuration to maximize the emission during the test.
- 2) Grounding was established in accordance with the manufacturer's requirements and conditions for the intended use.
- 3) shd. = shielded; unshd. = unshielded

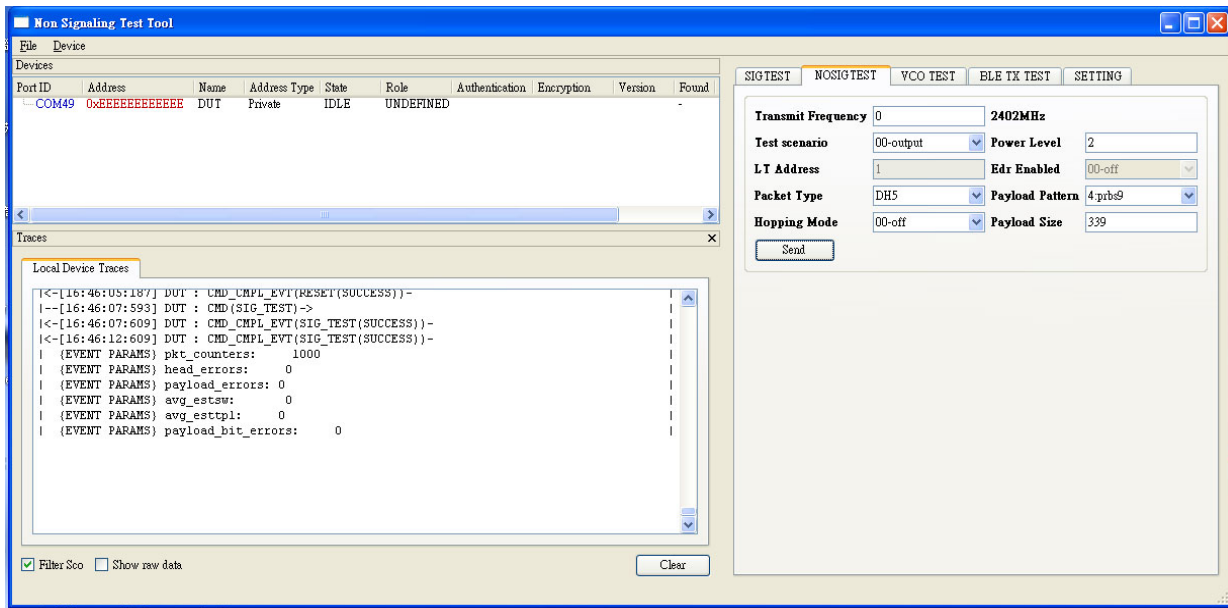
Report No.: T210713N01-RP1-1

Ref. No.: T200610N03-RP1-1

## EUT OPERATING CONDITION

### RF Setup

1. Set up all computers like the setup diagram.
2. The “BQB” software was used for testing.
3. Choose “Device” → “Add Platform Device” → “Auto Detect” → “Connect”.



### TX Mode:

#### BT1.0

NOSIG TEST

Transmit Frequency:0 (0,39,78)

Packet Type:DH5 (DH1,DH3,DH5)

Send

#### BT3.0

NOSIG TEST

Transmit Frequency:0 (0,39,78)

Packet Type:DH5\_3 (DH1-3,DH3\_3,DH5\_3)

Send

#### BT4.0

BLE TX TEST

Transmit Frequency:0 (0,20,39)

Send

### RX Mode:

BLE TX TEST

Receiver Frequency:0 (0,20,39)

4. All of the function are under run.
5. Start test.



## 8. APPLICABLE LIMITS AND TEST RESULTS

### 8.1 RADIATED EMISSIONS

#### 8.8.1 TRANSMITTER RADIATED SUPURIOUS EMSSIONS

##### LIMITS

§ 15.205 (a) Except as shown in paragraph (d) of this section, only spurious emissions are permitted in any of the frequency bands listed below:

MHz	MHz	MHz	GHz
0.090 - 0.110	16.42 - 16.423	399.9 - 410	4.5 - 5.15
<sup>1</sup> 0.495 - 0.505	16.69475 - 16.69525	608 - 614	5.35 - 5.46
2.1735 - 2.1905	16.80425 - 16.80475	960 - 1240	7.25 - 7.75
4.125 - 4.128	25.5 - 25.67	1300 - 1427	8.025 - 8.5
4.17725 - 4.17775	37.5 - 38.25	1435 - 1626.5	9.0 - 9.2
4.20725 - 4.20775	73 - 74.6	1645.5 - 1646.5	9.3 - 9.5
6.215 - 6.218	74.8 - 75.2	1660 - 1710	10.6 - 12.7
6.26775 - 6.26825	108 - 121.94	1718.8 - 1722.2	13.25 - 13.4
6.31175 - 6.31225	123 - 138	2200 - 2300	14.47 - 14.5
8.291 - 8.294	149.9 - 150.05	2310 - 2390	15.35 - 16.2
8.362 - 8.366	156.52475 - 156.52525	2483.5 - 2500	17.7 - 21.4
8.37625 - 8.38675	156.7 - 156.9	2655 - 2900	22.01 - 23.12
8.41425 - 8.41475	162.0125 - 167.17	3260 - 3267	23.6 - 24.0
12.29 - 12.293	167.72 - 173.2	3332 - 3339	31.2 - 31.8
12.51975 - 12.52025	240 - 285	3345.8 - 3338	36.43 - 36.5
12.57675 - 12.57725	322 - 335.4	3600 - 4400	( <sup>2</sup> )
13.36 - 13.41			

<sup>1</sup> Until February 1, 1999, this restricted band shall be 0.490-0.510 MHz.

<sup>2</sup> Above 38.6

§ 15.205 (b) Except as provided in paragraphs (d) and (e), the field strength of emissions appearing within these frequency bands shall not exceed the limits shown in Section 15.209. At frequencies equal to or less than 1000 MHz, compliance with the limits in Section 15.209 shall be demonstrated using measurement instrumentation employing a CISPR quasi-peak detector. Above 1000 MHz, compliance with the emission limits in Section 15.209 shall be demonstrated based on the average value of the measured emissions. The provisions in Section 15.35 apply to these measurements.

§ 15.209 (a) Except as provided elsewhere in this Subpart, the emissions from an intentional radiator shall not exceed the field strength levels specified in the following table :

Frequency (MHz)	Field Strength (microvolts/meter)	Measurement Distance (meters)
30 - 88	100 **	3
88 - 216	150 **	3
216 - 960	200 **	3
Above 960	500	3

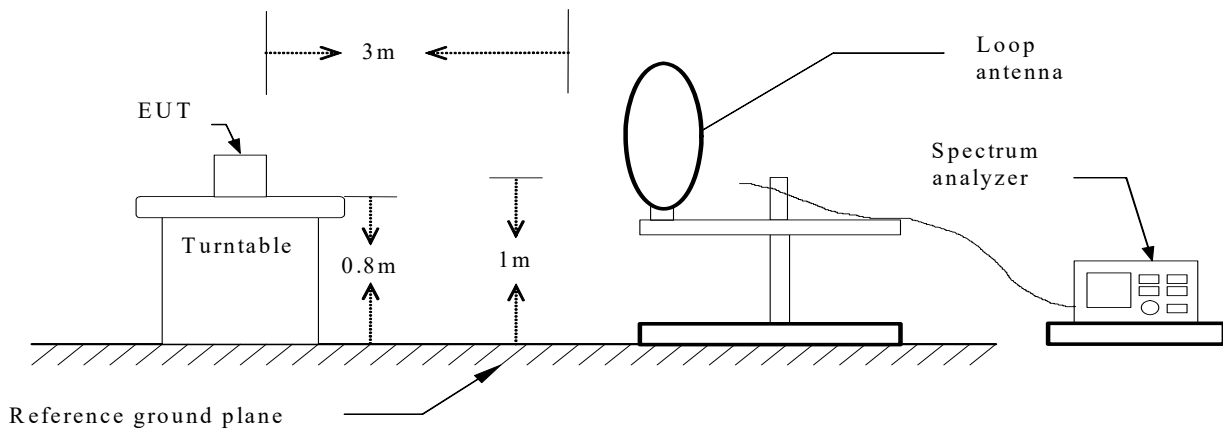
\*\* Except as provided in paragraph (g), fundamental emissions from intentional radiators operating under this Section shall not be located in the frequency bands 54-72 MHz, 76-88 MHz, 174-216 MHz or 470-806 MHz, However, operation within these frequency bands is permitted under other sections of this Part, e-g, Sections 15.231 and 15.241.

§ 15.209 (b) In the emission table above, the tighter limit applies at the band edges.

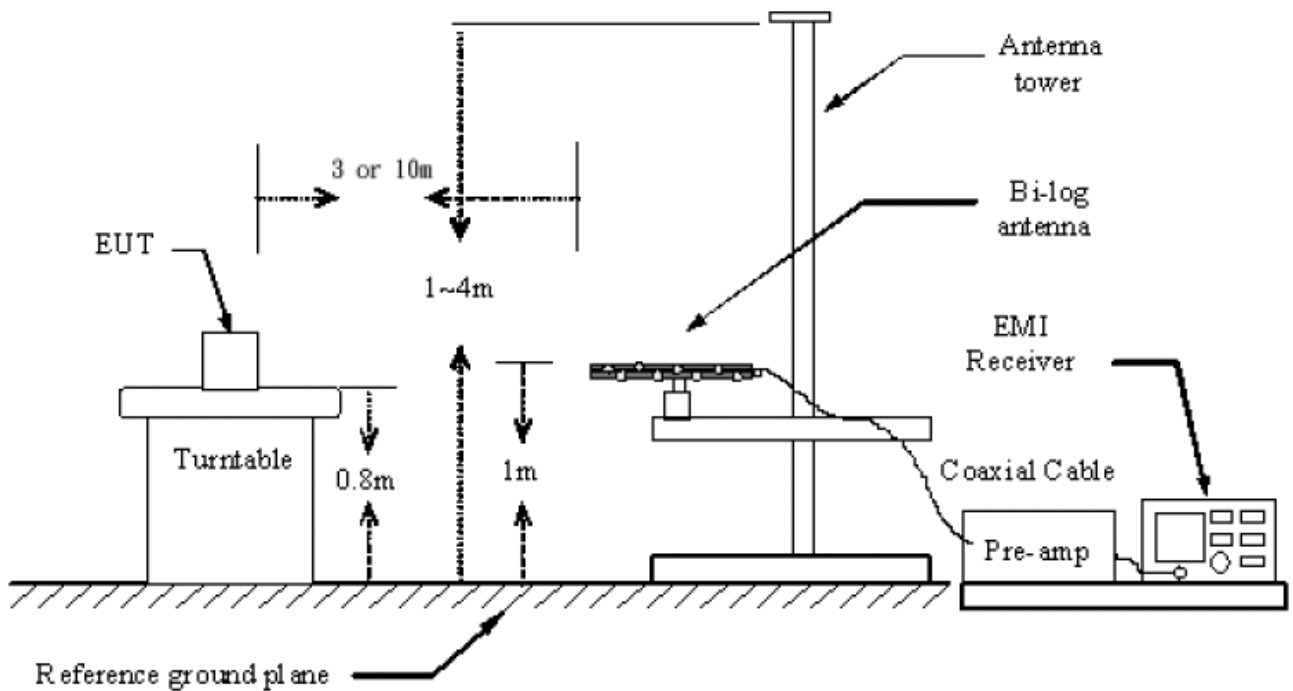
## TEST SETUP

The diagram below shows the test setup that is utilized to make the measurements for emission from below 1GHz.

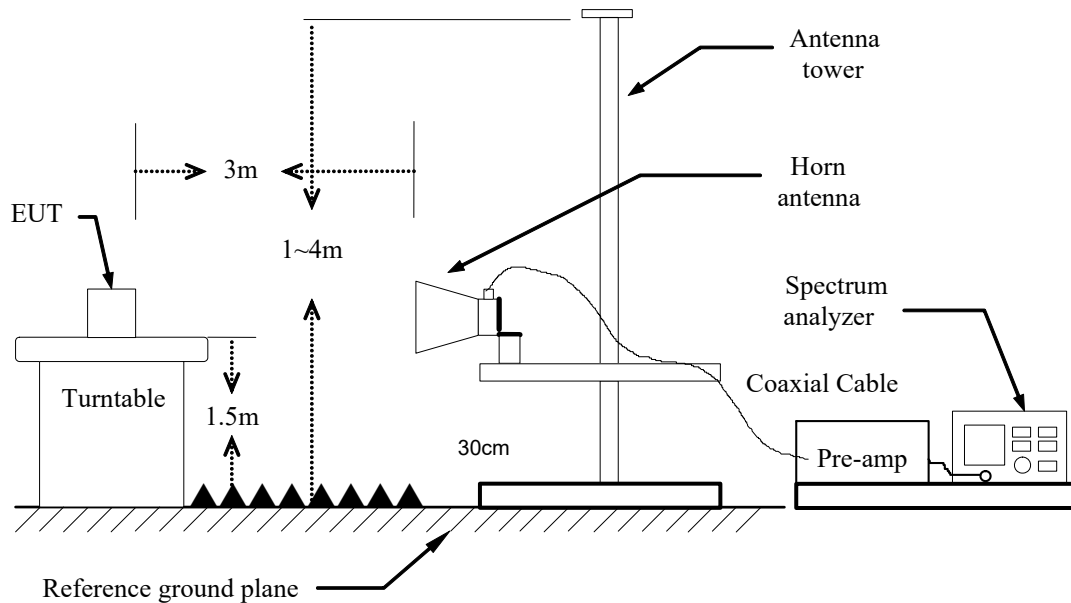
### 9kHz ~ 30MHz



### 30MHz ~ 1GHz



The diagram below shows the test setup that is utilized to make the measurements for emission above 1GHz.



## TEST PROCEDURE

- The EUT was placed on the top of a rotating table 0.8/1.5 meters above the ground at a 10/3 meter open site/chamber test site. The table was rotated 360 degrees to determine the position of the highest radiation.
- While measuring the radiated emission below 1GHz, the EUT was set 3 or 10 meters away from the interference-receiving antenna, which was mounted on the top of a variable-height antenna tower. While measuring the radiated emission above 1GHz, the EUT was set 3 or 10 meters away from the interference-receiving antenna.
- The antenna is a broadband antenna, and its height is varied from one meter to four meters above the ground to determine the maximum value of the field strength. Both horizontal and vertical polarization of the antenna are set to make the measurement.
- For each suspected emission, the EUT was arranged to its worst case and then the antenna was tuned to heights from 1 meter to 4 meters and the table was turned from 0 degrees to 360 degrees to find the maximum reading.
- The test-receiver system was set to Peak Detect Function and Specified Bandwidth with Maximum Hold Mode.
- If the emission level of the EUT in peak mode was 10 dB lower than the limit specified, then testing could be stopped and the peak values of the EUT would be reported. Otherwise the emissions that did not have 10 dB margin would be re-tested one by one using peak, quasi-peak or average method as specified and then reported in a data sheet.

Note :

- The resolution bandwidth and video bandwidth of test receiver/spectrum analyzer is 120 KHz for Peak detection (PK) and Quasi-peak detection (QP) at frequency below 1GHz.
- The resolution bandwidth and video bandwidth of test receiver/spectrum analyzer is 1 MHz for Peak detection and frequency above 1GHz.
- The resolution bandwidth of test receiver/spectrum analyzer is 1 MHz and the video bandwidth is 510 Hz for Average detection (AV) at frequency above 1GHz.

## 8.8.2 WORST-CASE RADIATED EMISSION BELOW 1 GHz

### BELOW 1 GHz (9kHz ~ 30MHz)

No emission found between lowest internal used/generated frequency to 30MHz.

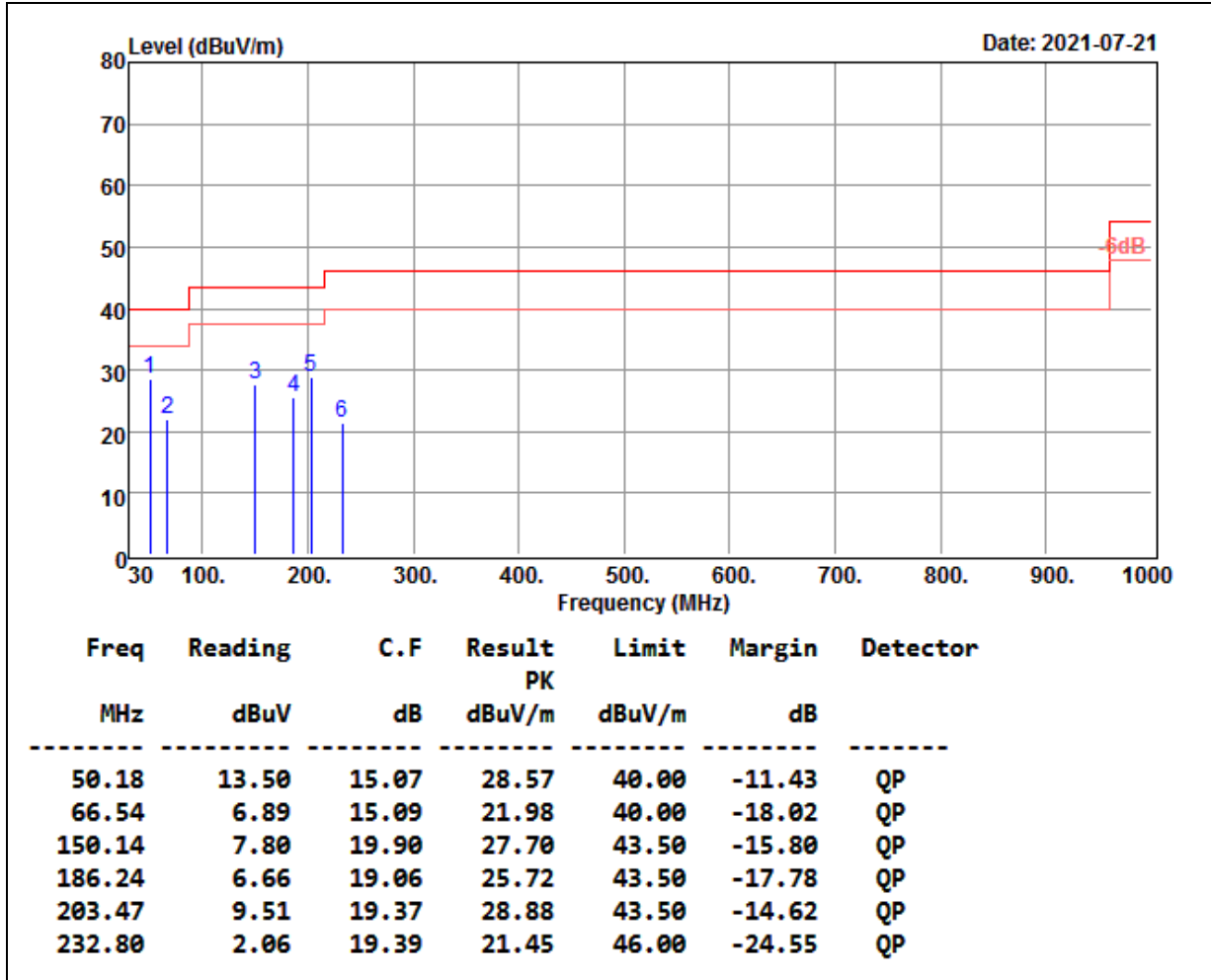
Report No.: T210713N01-RP1-1

Ref. No.: T200610N03-RP1-1

**BELOW 1 GHz (30MHz ~ 1GHz)**

<b>Product Name</b>	DJ MIXER	<b>Test Date</b>	2021/07/21
<b>Model Name</b>	RMX-44 BT	<b>Test By</b>	Ted Huang
<b>Test Mode</b>	TX	<b>Temp &amp; Humidity</b>	26.2°C, 58%

Vertical



**Remark:**

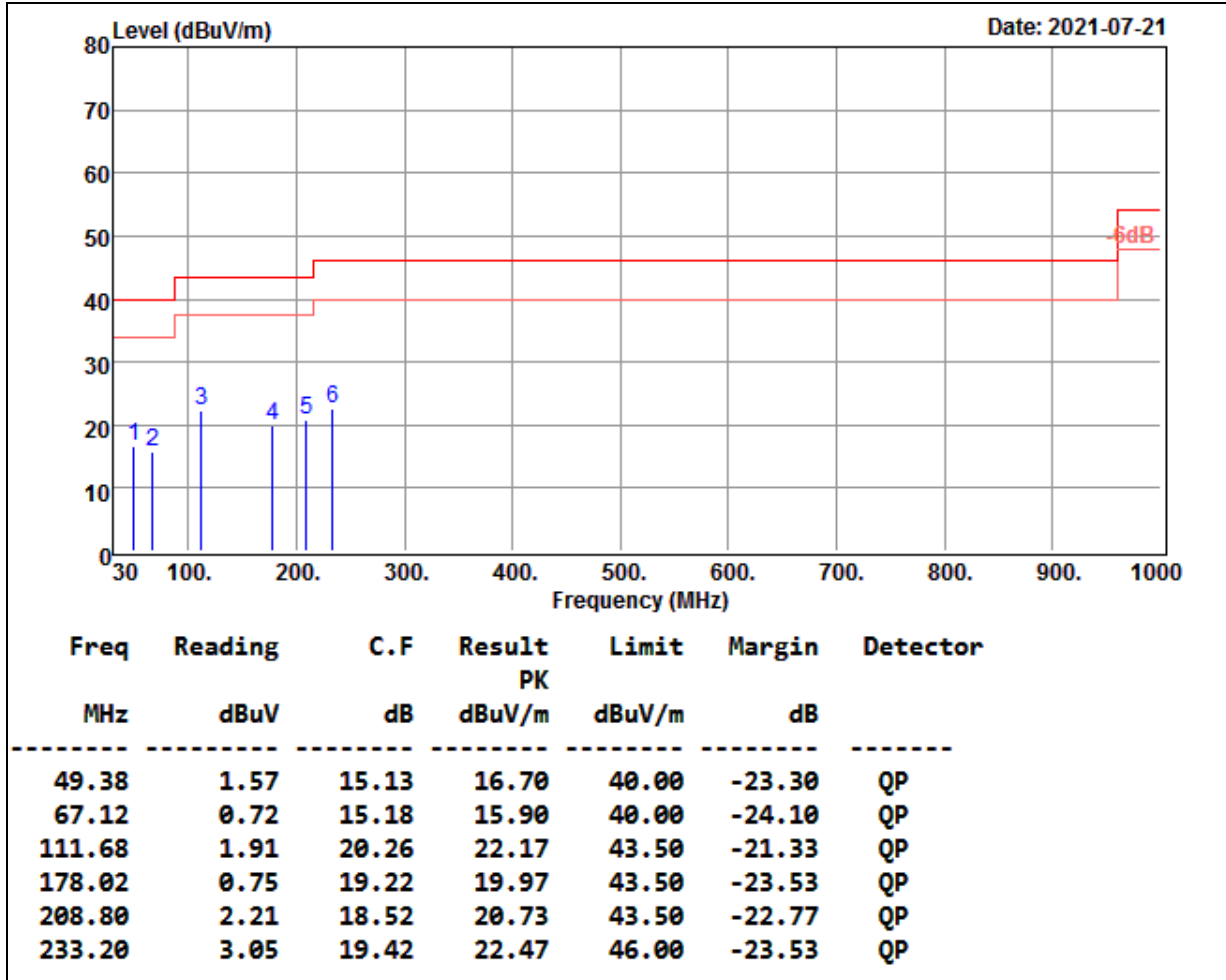
1. No emission found between lowest internal used/generated frequency to 30MHz (9kHz~30MHz).
2. Radiated emissions measured were made with an instrument using peak/quasi-peak detector mode.
3. Quasi-peak test would be performed if the peak result were greater than the quasi-peak limit or as required by the applicant.
4. Margin (dB) = Remark result (dBuV/m) – Quasi-peak limit (dBuV/m).

Report No.: T210713N01-RP1-1

Ref. No.: T200610N03-RP1-1

<b>Product Name</b>	DJ MIXER	<b>Test Date</b>	2021/07/21
<b>Model Name</b>	RMX-44 BT	<b>Test By</b>	Ted Huang
<b>Test Mode</b>	TX	<b>Temp &amp; Humidity</b>	26.2°C, 58%

Horizontal



**Remark:**

1. No emission found between lowest internal used/generated frequency to 30MHz (9kHz~30MHz).
2. Radiated emissions measured were made with an instrument using peak/quasi-peak detector mode.
3. Quasi-peak test would be performed if the peak result were greater than the quasi-peak limit or as required by the applicant.
4. Margin (dB) = Remark result (dBuV/m) – Quasi-peak limit (dBuV/m).

**=== END of Report ===**