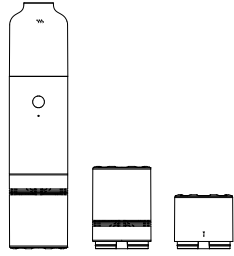


JOINING



LEGO Yoga Bluetooth Speaker

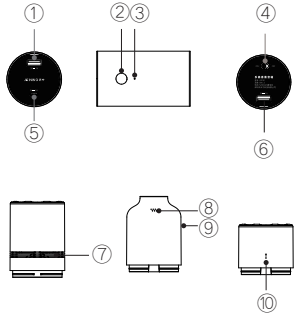
Model: JSP101

MANUAL

Please read the user manual carefully before use, follow the instructions of this manual to operate. Such product technology or software upgrade without notice.

-1-

Product Function



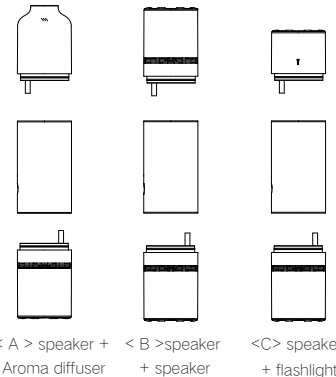
- ①⑥ USB female interface :
 - 5V 1A mobile power bank output interface
 - Speaker interface
 - Aroma diffuser interface
 - Flashlight interface
- ② Speaker control: play/pause, call answer/hang up
LED Indicator: Speaker working status indicating
- ③ Microphone
- ④ Speaker Switch
- ⑤ Micro USB: charging interface
- ⑦ Speaker Play LED indicator
- ⑧ Aroma diffuser touch switch :

- Pressed to turn on/off, scene light will flash 3 times when turned on
- Double press to turn on/off scene light
- Aroma diffuser will cut off after about 80 continuous working automatically
- ⑨ Aroma diffuser scene light
- ⑩ Flashlight touch switch :
 - Pressed to turn on/off

-3-

Product Installation

一、 Installation Diagram



< A > speaker + Aroma diffuser
< B > speaker + speaker
< C > speaker + flashlight

二、 Product function description

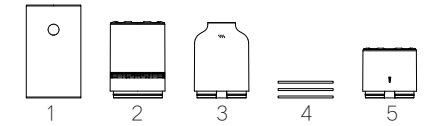
1. Mobile power bank: Main part of the product built-in two sets of 5V 1A mobile power bank output interface.
2. Bluetooth speaker: Configure two sets of 4Ω5W speakers, as the picture
 - Turn on the speaker power before bluetooth pairing, The led indicator will blinking, and will be light on continuously after successful bluetooth pairing.
 - Speaker play indicator light will be continuous light on during play and light off when stop/pause play .
 - The speaker will automatically cut off if the bluetooth is not paired or paired more than 5 minutes without play.
3. Aroma diffuser: Before use please take out the water tank according to Figure 1 and install the swab, add pure water or essential oil (Figure 3), then install the water tank as shown in the figure 4, connect to main body of the product(Figure A)

-5-

Basic parameters

Speaker	Antimagnetic horn 4Ω 5W Effective power 5Wx2
Aroma Diffuser	Water capacity 25ml Support continuous spray for about 70 minutes Power: 2W
Flashlight	0.5W
Built-in Mic	-39db
Battery	5200mAh 18650 lithium battery pack
Power Bank	5V 1A x 2 output interface
Net Weight	440g
Combined Size	Φ 50mm x 211mm(Max)

Packing List



- 1、 Main body x 1 PCS
- 2、 Speaker x 2 PCS
- 3、 Aroma Diffuser x 1 PCS
- 4、 Absorbent cotton swab x 3 PCS
- 5、 Flashlight x 1 PCS
- 6、 power cable : USB to Micro USB x 1 PCS
- 7、 Manual x PCS
- 8、 Quality Assurance Card x 1 PCS
- 9、 Carrying case x 1 PCS

-2-

Product features

Multiple combination use modes

1. Portable bluetooth speaker :
 - Bluetooth connection, stereo play, free to place at home or in the office and outdoor carrying.
2. Bluetooth speaker + Scene light +Aroma Diffuser :
 - Add pure water or essential oil as needed, fine spray with scene light function, the best choice for sleep or yoga.
3. Bluetooth speaker + Flashlight :
 - With high-brightness LED beads, easy to use. One-touch to control power on/off, illuminate dark night with music.
4. Dual mobile power bank output :
 - Built-in 5200mAh 18650 lithium battery pack, used as mobile power for mobile phones, tablet computers etc emergency power supply.

-4-

JOINING

Shenzhen Joining Free Technology Co., Ltd.

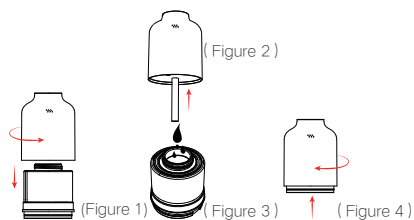
Tel : +86 400-900-9522 , +86 755 2328 1320(9:00-18:00 Monday to Friday)

Website: www.joiningfree.com Email: marketing@joiningfree.com

Add: 16 F, Block C, Qifengda Building, Taohuayuan Technology Park, Furong Road, Songgang, Baoan District, Shenzhen, China, 518105

-5-

4. Flashlight: connect to main part as figure c, touch to turn on/off.



-6-

NOTE

Shenzhen Joining Free Technology Co., Ltd. provides 12 months of quality assurance from the date of receipt of the product you bought from retailer or dealer. If the product(s) occur failure by nonhuman damage, please email to Shenzhen Joining Free Technology Co., Ltd. after-sale service support center(marketing@joiningfree.com) immediately to apply for Quality Assurance Statement. We will contact and guide you how to return failed product(s) to Shenzhen Joining Free Technology Co., Ltd. company or retailer/dealer for repair or replacement.

Contact

Tel: 400-900-9522 +86 755 23281320(9:00-18:00 Monday to Friday)
 Email: marketing@joiningfree.com
 Website: www.joiningfree.com

Statement

Our after-sale service are limited to products sold from Shenzhen Joining Free Technology Co., Ltd. official stores or authorized retailers/agents. If you purchased LEGO Yoga Bluetooth Speaker from other channels, you need to check the authenticity of the product by visit Shenzhen Joining Free Technology Co., Ltd. official website or through scan the anti-counterfeit QR code on the product packaging.

-8-

Product patent number : ZL 201830085375.1; ZL 201820312870.6
 Environmental protection and RoHs Standard
 Free from mercury or environmentally harmful substances
 Executive standard: GB8898-2011



Precautions

- | | | | |
|--|---|--|--|
| | Use proper voltage and current 5V/1A(2A Max) to charge, Unplug when not in use | | Do not repair or disassemble the product without authorization |
| | Keep the surrounding air convection for heat dissipation while product is working | | Do not use this product in a humid environment or near a heat source |
| | Do not touch the electrical parts with wet hands | | Please do not use worn or damaged power cord, avoid circuit overload to prevent electric shock or fire |
| | Avoid liquid influe into the product to prevent product failure or damage | | When the battery is low, the speaker will sound charging prompt tone every few seconds to remind you to charge in time |

-7-

FCC Statement

This equipment has been tested and found to comply with the limits for a Class B digital device, pursuant to Part 15 of the FCC Rules. These limits are designed to provide reasonable protection against harmful interference in a residential installation. This equipment generates uses and can radiate radio frequency energy and, if not installed and used in accordance with the instructions, may cause harmful interference to radio communications. However, there is no guarantee that interference will not occur in a particular installation. If this equipment does cause harmful interference to radio or television reception, which can be determined by turning the equipment off and on, the user is encouraged to try to correct the interference by one or more of the following measures:

- Reorient or relocate the receiving antenna.
- Increase the separation between the equipment and receiver.
- Connect the equipment into an outlet on a circuit different from that to which the receiver is connected.
- Consult the dealer or an experienced radio/TV technician for help.

This device complies with part 15 of the FCC Rules. Operation is subject to the following two conditions:

- (1) This device may not cause harmful interference, and (2) this device must accept any interference received, including interference that may cause undesired operation.
- (2) Changes or modifications not expressly approved by the party responsible for compliance could void the user's authority to operate the equipment.

-9-



Website



Wechat

Thank you for purchasing our LEGO Yoga Bluetooth Speakers, Please read this manual carefully and keep it safe for future reference. If you need any assistance, Please contact our customer service team by email: marketing@joiningfree.com