

Band4-1513-1-0.009~0.15MHz-PASS

Band4-1513-1-0.15~30MHz-PASS



Band4-1513-1-30~100MHz-PASS



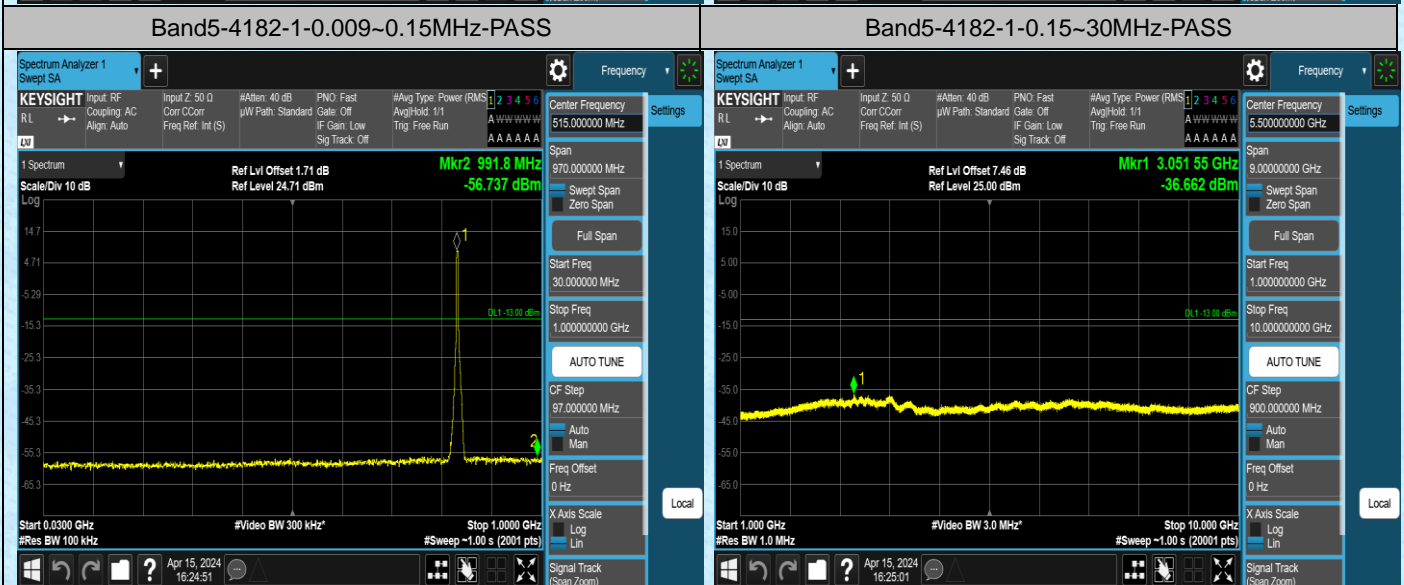
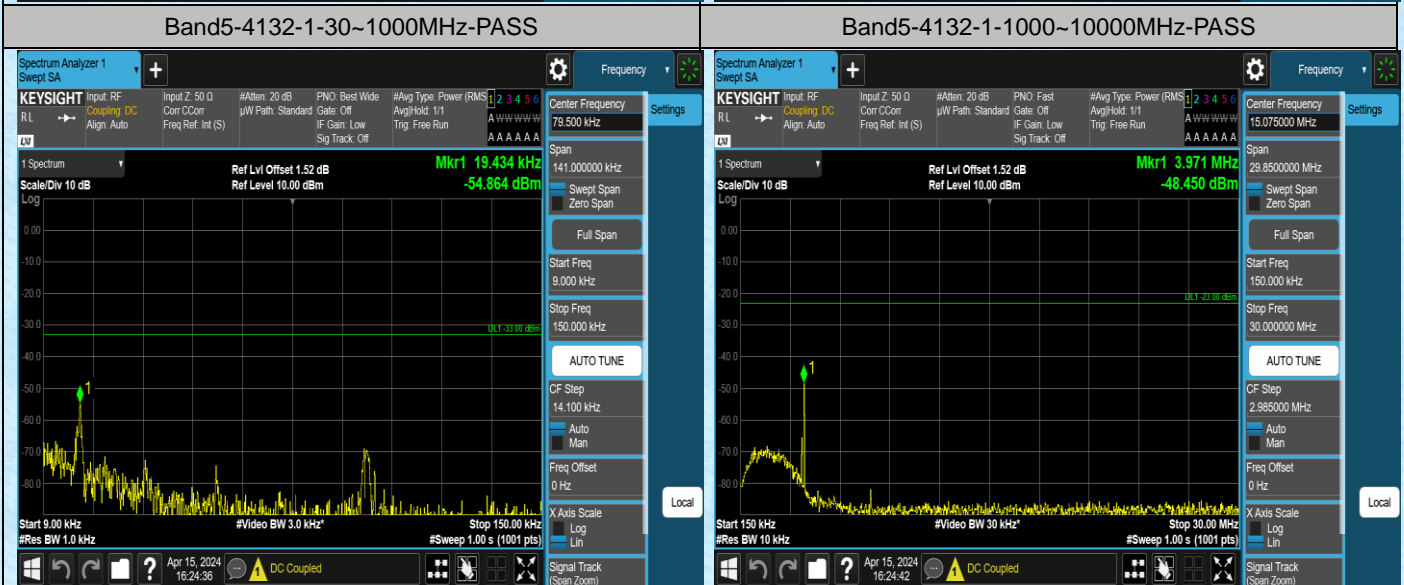
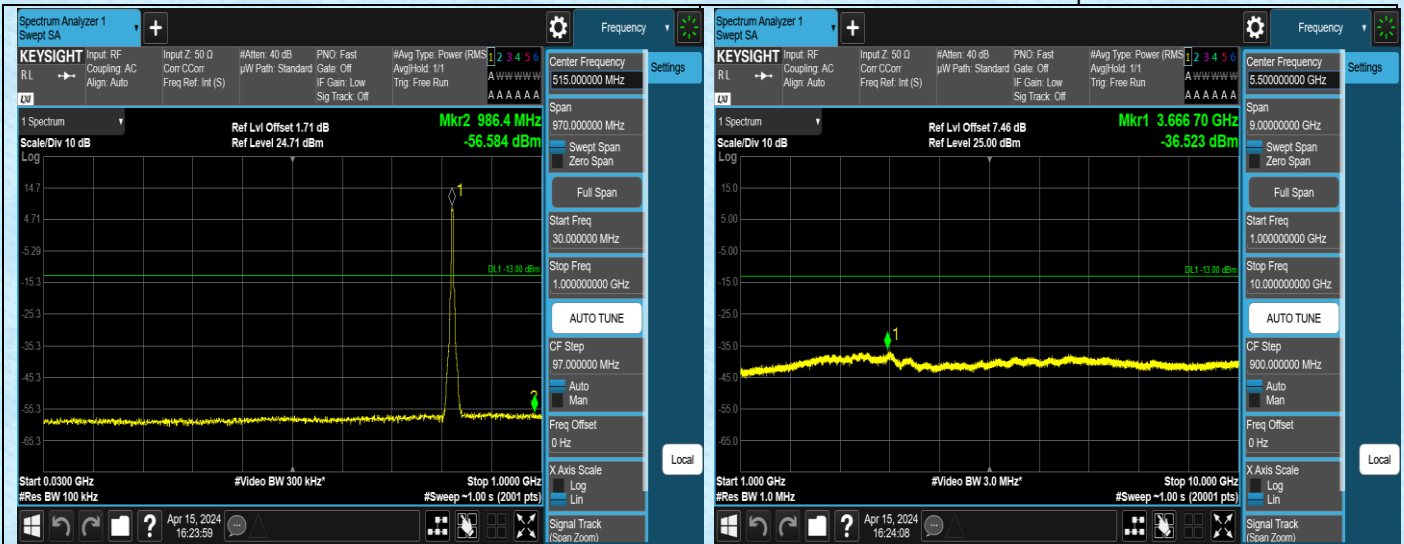
Band4-1513-1-100~2000MHz-PASS

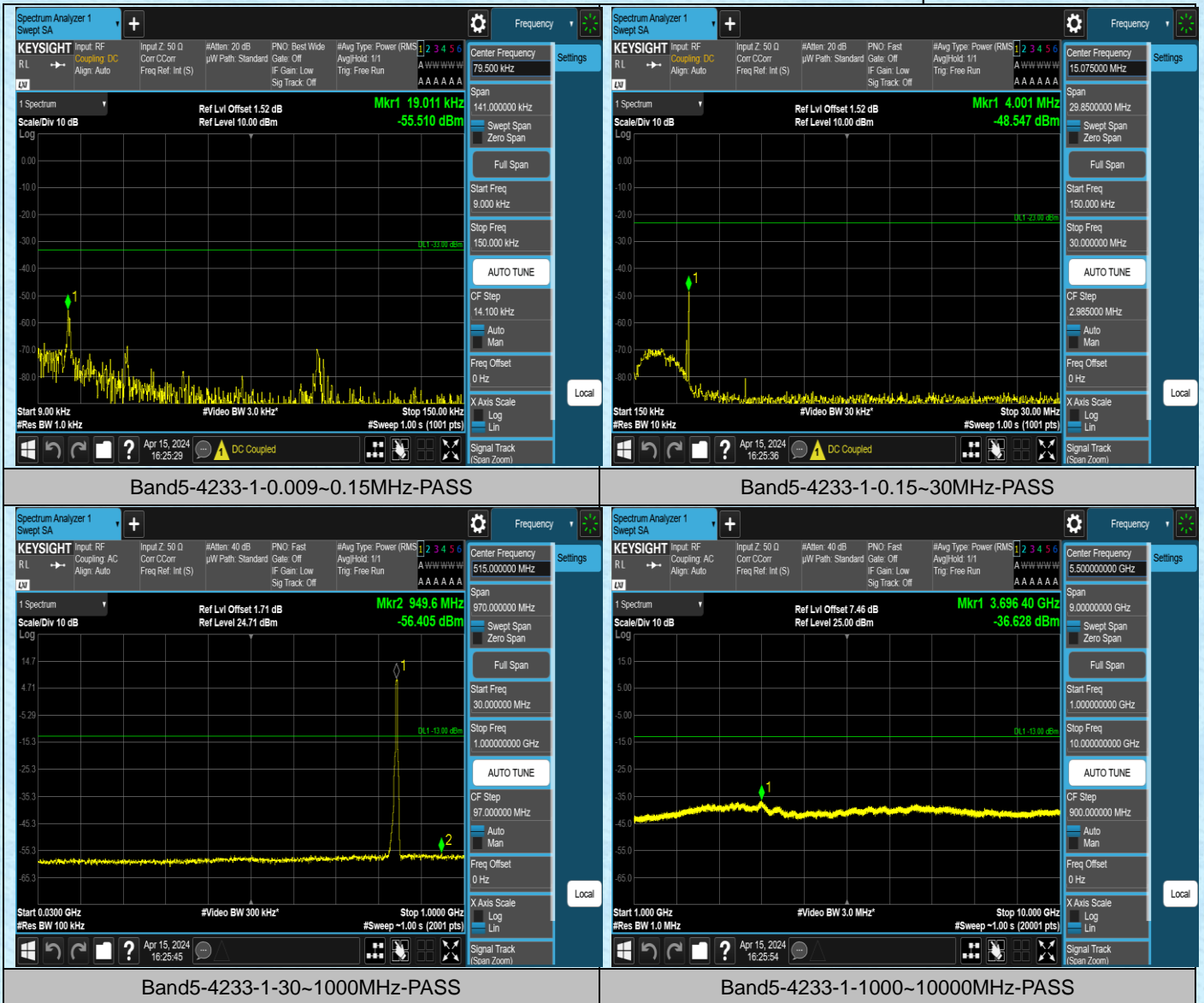


Band5-4132-1-0.009~0.15MHz-PASS



Band5-4132-1-0.15~30MHz-PASS





AppendixF:Frequency Stability

Test Result(WCDMA)

Voltage							
Band	Channel	Voltage (Vdc)	Temperature (°C)	Deviation (Hz)	Deviation (ppm)	Limit (ppm)	Verdict
Band2	9262	VN	NT	0.39	0.000211	±2.5	PASS
Band2	9262	VL	NT	-2.45	-0.001323	±2.5	PASS
Band2	9262	VH	NT	0.36	0.000194	±2.5	PASS
Band2	9400	VN	NT	-6.01	-0.003197	±2.5	PASS
Band2	9400	VL	NT	1.14	0.000606	±2.5	PASS

Band2	9400	VH	NT	3.62	0.001926	±2.5	PASS
Band2	9538	VN	NT	-4.50	-0.002359	±2.5	PASS
Band2	9538	VL	NT	-6.83	-0.003580	±2.5	PASS
Band2	9538	VH	NT	-0.67	-0.000351	±2.5	PASS
Band4	1312	VN	NT	4.67	0.002727	±2.5	PASS
Band4	1312	VL	NT	-0.81	-0.000473	±2.5	PASS
Band4	1312	VH	NT	0.62	0.000362	±2.5	PASS
Band4	1413	VN	NT	-4.06	-0.002343	±2.5	PASS
Band4	1413	VL	NT	-2.57	-0.001483	±2.5	PASS
Band4	1413	VH	NT	0.59	0.000341	±2.5	PASS
Band4	1513	VN	NT	-0.01	-0.000006	±2.5	PASS
Band4	1513	VL	NT	1.17	0.000668	±2.5	PASS
Band4	1513	VH	NT	-4.93	-0.002813	±2.5	PASS
Band5	4132	VN	NT	-2.60	-0.003146	±2.5	PASS
Band5	4132	VL	NT	-2.25	-0.002723	±2.5	PASS
Band5	4132	VH	NT	-1.43	-0.001730	±2.5	PASS
Band5	4182	VN	NT	-1.90	-0.002272	±2.5	PASS
Band5	4182	VL	NT	-3.32	-0.003969	±2.5	PASS
Band5	4182	VH	NT	-3.98	-0.004758	±2.5	PASS
Band5	4233	VN	NT	-4.43	-0.005233	±2.5	PASS
Band5	4233	VL	NT	-3.14	-0.003709	±2.5	PASS
Band5	4233	VH	NT	-0.92	-0.001087	±2.5	PASS

Temperature							
Band	Channel	Voltage (Vdc)	Temperature (°C)	Deviation (Hz)	Deviation (ppm)	Limit (ppm)	Verdict
Band2	9262	NV	-30	3.23	0.001744	±2.5	PASS
Band2	9262	NV	-20	-3.09	-0.001668	±2.5	PASS
Band2	9262	NV	-10	-2.85	-0.001539	±2.5	PASS
Band2	9262	NV	0	-1.65	-0.000891	±2.5	PASS
Band2	9262	NV	10	-2.87	-0.001549	±2.5	PASS
Band2	9262	NV	20	-5.19	-0.002802	±2.5	PASS
Band2	9262	NV	30	-3.73	-0.002014	±2.5	PASS
Band2	9262	NV	40	-2.94	-0.001587	±2.5	PASS
Band2	9262	NV	50	-4.77	-0.002575	±2.5	PASS
Band2	9400	NV	-30	-0.54	-0.000287	±2.5	PASS
Band2	9400	NV	-20	-6.02	-0.003202	±2.5	PASS
Band2	9400	NV	-10	-5.51	-0.002931	±2.5	PASS
Band2	9400	NV	0	1.24	0.000660	±2.5	PASS
Band2	9400	NV	10	-3.44	-0.001830	±2.5	PASS
Band2	9400	NV	20	-3.63	-0.001931	±2.5	PASS
Band2	9400	NV	30	3.30	0.001755	±2.5	PASS
Band2	9400	NV	40	-0.82	-0.000436	±2.5	PASS

Band2	9400	NV	50	-2.70	-0.001436	±2.5	PASS
Band2	9538	NV	-30	-3.82	-0.002003	±2.5	PASS
Band2	9538	NV	-20	1.27	0.000666	±2.5	PASS
Band2	9538	NV	-10	1.28	0.000671	±2.5	PASS
Band2	9538	NV	0	-3.63	-0.001903	±2.5	PASS
Band2	9538	NV	10	-3.13	-0.001641	±2.5	PASS
Band2	9538	NV	20	-3.35	-0.001756	±2.5	PASS
Band2	9538	NV	30	-3.11	-0.001630	±2.5	PASS
Band2	9538	NV	40	2.23	0.001169	±2.5	PASS
Band2	9538	NV	50	0.79	0.000414	±2.5	PASS
Band4	1312	NV	-30	-0.80	-0.000467	±2.5	PASS
Band4	1312	NV	-20	2.00	0.001168	±2.5	PASS
Band4	1312	NV	-10	1.49	0.000870	±2.5	PASS
Band4	1312	NV	0	1.22	0.000712	±2.5	PASS
Band4	1312	NV	10	3.02	0.001764	±2.5	PASS
Band4	1312	NV	20	1.97	0.001150	±2.5	PASS
Band4	1312	NV	30	3.87	0.002260	±2.5	PASS
Band4	1312	NV	40	-5.14	-0.003002	±2.5	PASS
Band4	1312	NV	50	-3.10	-0.001810	±2.5	PASS
Band4	1413	NV	-30	-3.05	-0.001760	±2.5	PASS
Band4	1413	NV	-20	-0.42	-0.000242	±2.5	PASS
Band4	1413	NV	-10	-5.39	-0.003111	±2.5	PASS
Band4	1413	NV	0	-6.04	-0.003486	±2.5	PASS
Band4	1413	NV	10	-5.94	-0.003428	±2.5	PASS
Band4	1413	NV	20	-0.82	-0.000473	±2.5	PASS
Band4	1413	NV	30	-3.36	-0.001939	±2.5	PASS
Band4	1413	NV	40	-3.00	-0.001732	±2.5	PASS
Band4	1413	NV	50	-4.61	-0.002661	±2.5	PASS
Band4	1513	NV	-30	-0.45	-0.000257	±2.5	PASS
Band4	1513	NV	-20	-0.33	-0.000188	±2.5	PASS
Band4	1513	NV	-10	1.39	0.000793	±2.5	PASS
Band4	1513	NV	0	1.49	0.000850	±2.5	PASS
Band4	1513	NV	10	-6.02	-0.003435	±2.5	PASS
Band4	1513	NV	20	-0.57	-0.000325	±2.5	PASS
Band4	1513	NV	30	-0.77	-0.000439	±2.5	PASS
Band4	1513	NV	40	-3.73	-0.002128	±2.5	PASS
Band4	1513	NV	50	-4.66	-0.002659	±2.5	PASS
Band5	4132	NV	-30	-2.40	-0.002904	±2.5	PASS
Band5	4132	NV	-20	-1.49	-0.001803	±2.5	PASS
Band5	4132	NV	-10	-1.70	-0.002057	±2.5	PASS
Band5	4132	NV	0	-2.35	-0.002844	±2.5	PASS
Band5	4132	NV	10	-2.75	-0.003328	±2.5	PASS
Band5	4132	NV	20	-3.50	-0.004235	±2.5	PASS

Band5	4132	NV	30	-2.30	-0.002783	±2.5	PASS
Band5	4132	NV	40	-0.80	-0.000968	±2.5	PASS
Band5	4132	NV	50	-3.45	-0.004175	±2.5	PASS
Band5	4182	NV	-30	-2.65	-0.003168	±2.5	PASS
Band5	4182	NV	-20	-4.31	-0.005153	±2.5	PASS
Band5	4182	NV	-10	-3.93	-0.004699	±2.5	PASS
Band5	4182	NV	0	-3.23	-0.003862	±2.5	PASS
Band5	4182	NV	10	-3.53	-0.004220	±2.5	PASS
Band5	4182	NV	20	-4.26	-0.005093	±2.5	PASS
Band5	4182	NV	30	-4.41	-0.005273	±2.5	PASS
Band5	4182	NV	40	-3.68	-0.004400	±2.5	PASS
Band5	4182	NV	50	-2.92	-0.003491	±2.5	PASS
Band5	4233	NV	-30	1.29	0.001524	±2.5	PASS
Band5	4233	NV	-20	1.78	0.002103	±2.5	PASS
Band5	4233	NV	-10	4.18	0.004937	±2.5	PASS
Band5	4233	NV	0	4.28	0.005056	±2.5	PASS
Band5	4233	NV	10	3.19	0.003768	±2.5	PASS
Band5	4233	NV	20	5.78	0.006827	±2.5	PASS
Band5	4233	NV	30	3.97	0.004689	±2.5	PASS
Band5	4233	NV	40	5.89	0.006957	±2.5	PASS
Band5	4233	NV	50	-5.84	-0.006898	±2.5	PASS

Test Result(HSDPA)

Voltage								
Band	Channel	SubTest	Voltage (Vdc)	Temperature (°C)	Deviation (Hz)	Deviation (ppm)	Limit (ppm)	Verdict
Band2	9262	1	VN	NT	-3.18	-0.001717	±2.5	PASS
Band2	9262	1	VL	NT	-4.18	-0.002257	±2.5	PASS
Band2	9262	1	VH	NT	-4.34	-0.002343	±2.5	PASS
Band2	9400	1	VN	NT	0.46	0.000245	±2.5	PASS
Band2	9400	1	VL	NT	-0.27	-0.000144	±2.5	PASS
Band2	9400	1	VH	NT	0.31	0.000165	±2.5	PASS
Band2	9538	1	VN	NT	-0.28	-0.000147	±2.5	PASS
Band2	9538	1	VL	NT	3.46	0.001814	±2.5	PASS
Band2	9538	1	VH	NT	1.37	0.000718	±2.5	PASS
Band4	1312	1	VN	NT	2.40	0.001402	±2.5	PASS
Band4	1312	1	VL	NT	-1.78	-0.001039	±2.5	PASS
Band4	1312	1	VH	NT	1.95	0.001139	±2.5	PASS
Band4	1413	1	VN	NT	-2.55	-0.001472	±2.5	PASS
Band4	1413	1	VL	NT	3.12	0.001801	±2.5	PASS
Band4	1413	1	VH	NT	-3.73	-0.002153	±2.5	PASS
Band4	1513	1	VN	NT	-3.84	-0.002191	±2.5	PASS
Band4	1513	1	VL	NT	-2.30	-0.001312	±2.5	PASS
Band4	1513	1	VH	NT	-5.64	-0.003218	±2.5	PASS
Band5	4132	1	VN	NT	3.09	0.003739	±2.5	PASS
Band5	4132	1	VL	NT	-6.99	-0.008458	±2.5	PASS
Band5	4132	1	VH	NT	-4.20	-0.005082	±2.5	PASS
Band5	4182	1	VN	NT	-0.05	-0.000060	±2.5	PASS
Band5	4182	1	VL	NT	-0.65	-0.000777	±2.5	PASS
Band5	4182	1	VH	NT	-4.55	-0.005440	±2.5	PASS
Band5	4233	1	VN	NT	1.68	0.001984	±2.5	PASS
Band5	4233	1	VL	NT	-9.92	-0.011717	±2.5	PASS
Band5	4233	1	VH	NT	2.77	0.003272	±2.5	PASS

Temperature								
Band	Channel	SubTest	Voltage (Vdc)	Temperature (°C)	Deviation (Hz)	Deviation (ppm)	Limit (ppm)	Verdict
Band2	9262	1	NV	-30	-2.60	-0.001404	±2.5	PASS
Band2	9262	1	NV	-20	-6.17	-0.003331	±2.5	PASS
Band2	9262	1	NV	-10	-2.84	-0.001533	±2.5	PASS
Band2	9262	1	NV	0	3.20	0.001727	±2.5	PASS
Band2	9262	1	NV	10	-0.94	-0.000507	±2.5	PASS
Band2	9262	1	NV	20	0.06	0.000032	±2.5	PASS
Band2	9262	1	NV	30	1.44	0.000777	±2.5	PASS

Band2	9262	1	NV	40	-5.00	-0.002699	±2.5	PASS
Band2	9262	1	NV	50	-7.60	-0.004103	±2.5	PASS
Band2	9400	1	NV	-30	5.02	0.002670	±2.5	PASS
Band2	9400	1	NV	-20	2.58	0.001372	±2.5	PASS
Band2	9400	1	NV	-10	4.89	0.002601	±2.5	PASS
Band2	9400	1	NV	0	0.71	0.000378	±2.5	PASS
Band2	9400	1	NV	10	3.47	0.001846	±2.5	PASS
Band2	9400	1	NV	20	-1.86	-0.000989	±2.5	PASS
Band2	9400	1	NV	30	6.49	0.003452	±2.5	PASS
Band2	9400	1	NV	40	5.04	0.002681	±2.5	PASS
Band2	9400	1	NV	50	2.11	0.001122	±2.5	PASS
Band2	9538	1	NV	-30	0.87	0.000456	±2.5	PASS
Band2	9538	1	NV	-20	1.14	0.000598	±2.5	PASS
Band2	9538	1	NV	-10	5.81	0.003046	±2.5	PASS
Band2	9538	1	NV	0	0.84	0.000440	±2.5	PASS
Band2	9538	1	NV	10	-4.17	-0.002186	±2.5	PASS
Band2	9538	1	NV	20	-1.44	-0.000755	±2.5	PASS
Band2	9538	1	NV	30	-4.84	-0.002537	±2.5	PASS
Band2	9538	1	NV	40	-3.34	-0.001751	±2.5	PASS
Band2	9538	1	NV	50	-3.92	-0.002055	±2.5	PASS
Band4	1312	1	NV	-30	2.20	0.001285	±2.5	PASS
Band4	1312	1	NV	-20	-1.39	-0.000812	±2.5	PASS
Band4	1312	1	NV	-10	-5.78	-0.003375	±2.5	PASS
Band4	1312	1	NV	0	-2.20	-0.001285	±2.5	PASS
Band4	1312	1	NV	10	1.57	0.000917	±2.5	PASS
Band4	1312	1	NV	20	4.16	0.002429	±2.5	PASS
Band4	1312	1	NV	30	-2.89	-0.001688	±2.5	PASS
Band4	1312	1	NV	40	-0.48	-0.000280	±2.5	PASS
Band4	1312	1	NV	50	1.53	0.000893	±2.5	PASS
Band4	1413	1	NV	-30	3.55	0.002049	±2.5	PASS
Band4	1413	1	NV	-20	-0.13	-0.000075	±2.5	PASS
Band4	1413	1	NV	-10	-4.44	-0.002563	±2.5	PASS
Band4	1413	1	NV	0	1.12	0.000646	±2.5	PASS
Band4	1413	1	NV	10	3.45	0.001991	±2.5	PASS
Band4	1413	1	NV	20	-3.73	-0.002153	±2.5	PASS
Band4	1413	1	NV	30	-2.35	-0.001356	±2.5	PASS
Band4	1413	1	NV	40	0.77	0.000444	±2.5	PASS
Band4	1413	1	NV	50	2.07	0.001195	±2.5	PASS
Band4	1513	1	NV	-30	0.59	0.000337	±2.5	PASS
Band4	1513	1	NV	-20	-1.34	-0.000765	±2.5	PASS
Band4	1513	1	NV	-10	-3.73	-0.002128	±2.5	PASS
Band4	1513	1	NV	0	-1.42	-0.000810	±2.5	PASS
Band4	1513	1	NV	10	-3.09	-0.001763	±2.5	PASS

Band4	1513	1	NV	20	1.19	0.000679	±2.5	PASS
Band4	1513	1	NV	30	-4.17	-0.002379	±2.5	PASS
Band4	1513	1	NV	40	-5.46	-0.003115	±2.5	PASS
Band4	1513	1	NV	50	-2.45	-0.001398	±2.5	PASS
Band5	4132	1	NV	-30	-2.49	-0.003013	±2.5	PASS
Band5	4132	1	NV	-20	-1.09	-0.001319	±2.5	PASS
Band5	4132	1	NV	-10	0.78	0.000944	±2.5	PASS
Band5	4132	1	NV	0	1.69	0.002045	±2.5	PASS
Band5	4132	1	NV	10	2.45	0.002965	±2.5	PASS
Band5	4132	1	NV	20	4.44	0.005373	±2.5	PASS
Band5	4132	1	NV	30	-5.89	-0.007127	±2.5	PASS
Band5	4132	1	NV	40	-5.44	-0.006583	±2.5	PASS
Band5	4132	1	NV	50	-7.25	-0.008773	±2.5	PASS
Band5	4182	1	NV	-30	-4.94	-0.005906	±2.5	PASS
Band5	4182	1	NV	-20	-2.85	-0.003407	±2.5	PASS
Band5	4182	1	NV	-10	-1.72	-0.002056	±2.5	PASS
Band5	4182	1	NV	0	-0.58	-0.000693	±2.5	PASS
Band5	4182	1	NV	10	-0.49	-0.000586	±2.5	PASS
Band5	4182	1	NV	20	1.40	0.001674	±2.5	PASS
Band5	4182	1	NV	30	1.18	0.001411	±2.5	PASS
Band5	4182	1	NV	40	0.16	0.000191	±2.5	PASS
Band5	4182	1	NV	50	-39.09	-0.046736	±2.5	PASS
Band5	4233	1	NV	-30	-3.57	-0.004217	±2.5	PASS
Band5	4233	1	NV	-20	0.26	0.000307	±2.5	PASS
Band5	4233	1	NV	-10	-1.17	-0.001382	±2.5	PASS
Band5	4233	1	NV	0	-2.22	-0.002622	±2.5	PASS
Band5	4233	1	NV	10	-3.05	-0.003603	±2.5	PASS
Band5	4233	1	NV	20	-10.16	-0.012001	±2.5	PASS
Band5	4233	1	NV	30	-4.63	-0.005469	±2.5	PASS
Band5	4233	1	NV	40	2.78	0.003284	±2.5	PASS
Band5	4233	1	NV	50	16.54	0.019537	±2.5	PASS

Test Result(HSUPA)

Voltage								
Band	Channel	SubTest	Voltage (Vdc)	Temperature (°C)	Deviation (Hz)	Deviation (ppm)	Limit (ppm)	Verdict
Band2	9262	1	VN	NT	-3.34	-0.001803	±2.5	PASS
Band2	9262	1	VL	NT	-5.57	-0.003007	±2.5	PASS
Band2	9262	1	VH	NT	-5.14	-0.002775	±2.5	PASS
Band2	9400	1	VN	NT	-9.23	-0.004910	±2.5	PASS
Band2	9400	1	VL	NT	-7.91	-0.004207	±2.5	PASS
Band2	9400	1	VH	NT	-8.28	-0.004404	±2.5	PASS
Band2	9538	1	VN	NT	-4.50	-0.002359	±2.5	PASS
Band2	9538	1	VL	NT	-4.01	-0.002102	±2.5	PASS
Band2	9538	1	VH	NT	-1.06	-0.000556	±2.5	PASS
Band4	1312	1	VN	NT	-8.98	-0.005244	±2.5	PASS
Band4	1312	1	VL	NT	-2.04	-0.001191	±2.5	PASS
Band4	1312	1	VH	NT	0.94	0.000549	±2.5	PASS
Band4	1413	1	VN	NT	-4.76	-0.002747	±2.5	PASS
Band4	1413	1	VL	NT	0.24	0.000139	±2.5	PASS
Band4	1413	1	VH	NT	3.32	0.001916	±2.5	PASS
Band4	1513	1	VN	NT	-2.83	-0.001615	±2.5	PASS
Band4	1513	1	VL	NT	-2.68	-0.001529	±2.5	PASS
Band4	1513	1	VH	NT	1.42	0.000810	±2.5	PASS
Band5	4132	1	VN	NT	-0.03	-0.000036	±2.5	PASS
Band5	4132	1	VL	NT	-3.58	-0.004332	±2.5	PASS
Band5	4132	1	VH	NT	-7.65	-0.009257	±2.5	PASS
Band5	4182	1	VN	NT	8.42	0.010067	±2.5	PASS
Band5	4182	1	VL	NT	-19.10	-0.022836	±2.5	PASS
Band5	4182	1	VH	NT	-21.43	-0.025622	±2.5	PASS
Band5	4233	1	VN	NT	-10.56	-0.012473	±2.5	PASS
Band5	4233	1	VL	NT	-0.44	-0.000520	±2.5	PASS
Band5	4233	1	VH	NT	-4.23	-0.004996	±2.5	PASS

Temperature								
Band	Channel	SubTest	Voltage (Vdc)	Temperature (°C)	Deviation (Hz)	Deviation (ppm)	Limit (ppm)	Verdict
Band2	9262	1	NV	-30	-2.18	-0.001177	±2.5	PASS
Band2	9262	1	NV	-20	2.55	0.001377	±2.5	PASS
Band2	9262	1	NV	-10	-1.52	-0.000821	±2.5	PASS
Band2	9262	1	NV	0	0.54	0.000292	±2.5	PASS
Band2	9262	1	NV	10	-4.64	-0.002505	±2.5	PASS
Band2	9262	1	NV	20	-8.46	-0.004567	±2.5	PASS
Band2	9262	1	NV	30	-8.78	-0.004740	±2.5	PASS

Band2	9262	1	NV	40	-2.12	-0.001144	±2.5	PASS
Band2	9262	1	NV	50	-1.07	-0.000578	±2.5	PASS
Band2	9400	1	NV	-30	5.00	0.002660	±2.5	PASS
Band2	9400	1	NV	-20	-4.52	-0.002404	±2.5	PASS
Band2	9400	1	NV	-10	-4.96	-0.002638	±2.5	PASS
Band2	9400	1	NV	0	-3.38	-0.001798	±2.5	PASS
Band2	9400	1	NV	10	-1.05	-0.000559	±2.5	PASS
Band2	9400	1	NV	20	2.57	0.001367	±2.5	PASS
Band2	9400	1	NV	30	-2.94	-0.001564	±2.5	PASS
Band2	9400	1	NV	40	-3.88	-0.002064	±2.5	PASS
Band2	9400	1	NV	50	0.54	0.000287	±2.5	PASS
Band2	9538	1	NV	-30	1.86	0.000975	±2.5	PASS
Band2	9538	1	NV	-20	-10.36	-0.005431	±2.5	PASS
Band2	9538	1	NV	-10	-9.54	-0.005001	±2.5	PASS
Band2	9538	1	NV	0	1.78	0.000933	±2.5	PASS
Band2	9538	1	NV	10	-4.47	-0.002343	±2.5	PASS
Band2	9538	1	NV	20	-1.54	-0.000807	±2.5	PASS
Band2	9538	1	NV	30	-3.53	-0.001850	±2.5	PASS
Band2	9538	1	NV	40	4.44	0.002328	±2.5	PASS
Band2	9538	1	NV	50	-7.99	-0.004189	±2.5	PASS
Band4	1312	1	NV	-30	3.95	0.002307	±2.5	PASS
Band4	1312	1	NV	-20	0.29	0.000169	±2.5	PASS
Band4	1312	1	NV	-10	3.99	0.002330	±2.5	PASS
Band4	1312	1	NV	0	-6.04	-0.003527	±2.5	PASS
Band4	1312	1	NV	10	3.01	0.001758	±2.5	PASS
Band4	1312	1	NV	20	2.88	0.001682	±2.5	PASS
Band4	1312	1	NV	30	5.27	0.003078	±2.5	PASS
Band4	1312	1	NV	40	0.06	0.000035	±2.5	PASS
Band4	1312	1	NV	50	4.37	0.002552	±2.5	PASS
Band4	1413	1	NV	-30	3.65	0.002107	±2.5	PASS
Band4	1413	1	NV	-20	-0.06	-0.000035	±2.5	PASS
Band4	1413	1	NV	-10	-4.70	-0.002713	±2.5	PASS
Band4	1413	1	NV	0	-1.14	-0.000658	±2.5	PASS
Band4	1413	1	NV	10	2.51	0.001449	±2.5	PASS
Band4	1413	1	NV	20	-2.10	-0.001212	±2.5	PASS
Band4	1413	1	NV	30	-0.12	-0.000069	±2.5	PASS
Band4	1413	1	NV	40	2.63	0.001518	±2.5	PASS
Band4	1413	1	NV	50	-2.98	-0.001720	±2.5	PASS
Band4	1513	1	NV	-30	1.97	0.001124	±2.5	PASS
Band4	1513	1	NV	-20	-3.88	-0.002214	±2.5	PASS
Band4	1513	1	NV	-10	-5.50	-0.003138	±2.5	PASS
Band4	1513	1	NV	0	1.28	0.000730	±2.5	PASS
Band4	1513	1	NV	10	0.49	0.000280	±2.5	PASS

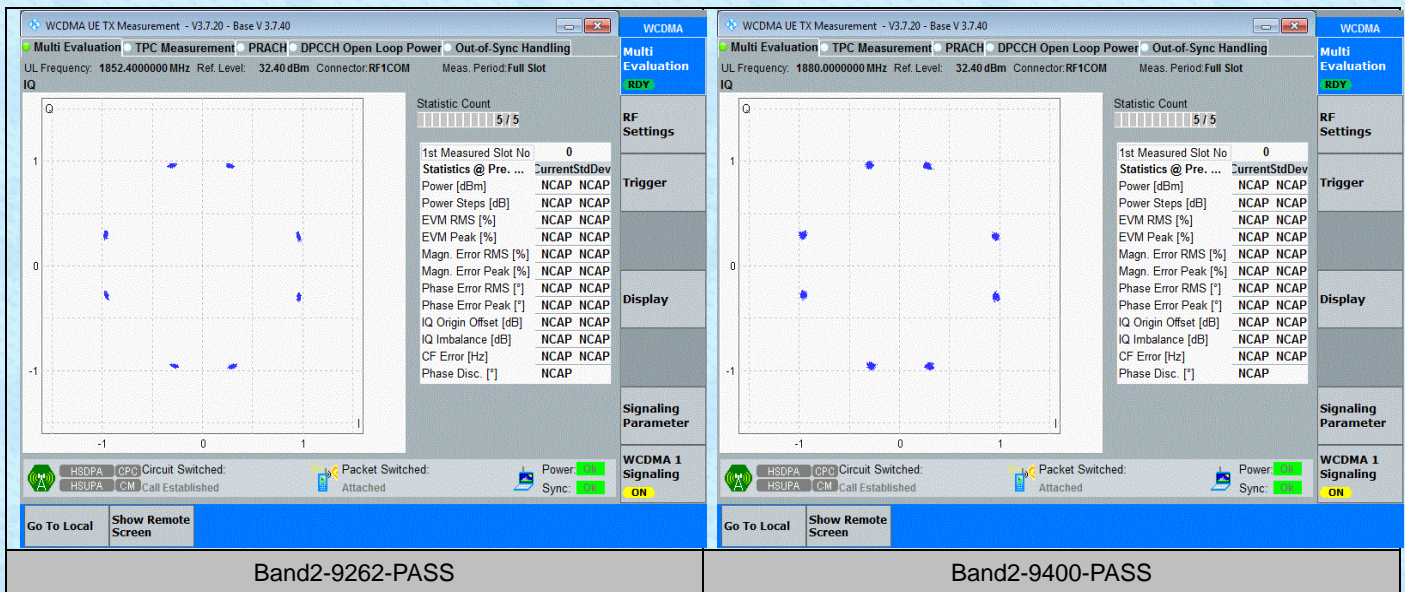
Band4	1513	1	NV	20	5.03	0.002870	±2.5	PASS
Band4	1513	1	NV	30	-1.72	-0.000981	±2.5	PASS
Band4	1513	1	NV	40	2.88	0.001643	±2.5	PASS
Band4	1513	1	NV	50	4.83	0.002756	±2.5	PASS
Band5	4132	1	NV	-30	-3.88	-0.004695	±2.5	PASS
Band5	4132	1	NV	-20	30.00	0.036302	±2.5	PASS
Band5	4132	1	NV	-10	6.59	0.007974	±2.5	PASS
Band5	4132	1	NV	0	-0.09	-0.000109	±2.5	PASS
Band5	4132	1	NV	10	-16.88	-0.020426	±2.5	PASS
Band5	4132	1	NV	20	8.77	0.010612	±2.5	PASS
Band5	4132	1	NV	30	12.93	0.015646	±2.5	PASS
Band5	4132	1	NV	40	-11.17	-0.013516	±2.5	PASS
Band5	4132	1	NV	50	-9.73	-0.011774	±2.5	PASS
Band5	4182	1	NV	-30	-58.64	-0.070110	±2.5	PASS
Band5	4182	1	NV	-20	-41.37	-0.049462	±2.5	PASS
Band5	4182	1	NV	-10	-40.88	-0.048876	±2.5	PASS
Band5	4182	1	NV	0	0.16	0.000191	±2.5	PASS
Band5	4182	1	NV	10	0.21	0.000251	±2.5	PASS
Band5	4182	1	NV	20	3.75	0.004484	±2.5	PASS
Band5	4182	1	NV	30	2.19	0.002618	±2.5	PASS
Band5	4182	1	NV	40	3.05	0.003647	±2.5	PASS
Band5	4182	1	NV	50	-5.99	-0.007162	±2.5	PASS
Band5	4233	1	NV	-30	-6.73	-0.007949	±2.5	PASS
Band5	4233	1	NV	-20	-6.81	-0.008044	±2.5	PASS
Band5	4233	1	NV	-10	0.63	0.000744	±2.5	PASS
Band5	4233	1	NV	0	2.90	0.003425	±2.5	PASS
Band5	4233	1	NV	10	-0.43	-0.000508	±2.5	PASS
Band5	4233	1	NV	20	1.44	0.001701	±2.5	PASS
Band5	4233	1	NV	30	-0.77	-0.000910	±2.5	PASS
Band5	4233	1	NV	40	3.84	0.004536	±2.5	PASS
Band5	4233	1	NV	50	3.33	0.003933	±2.5	PASS

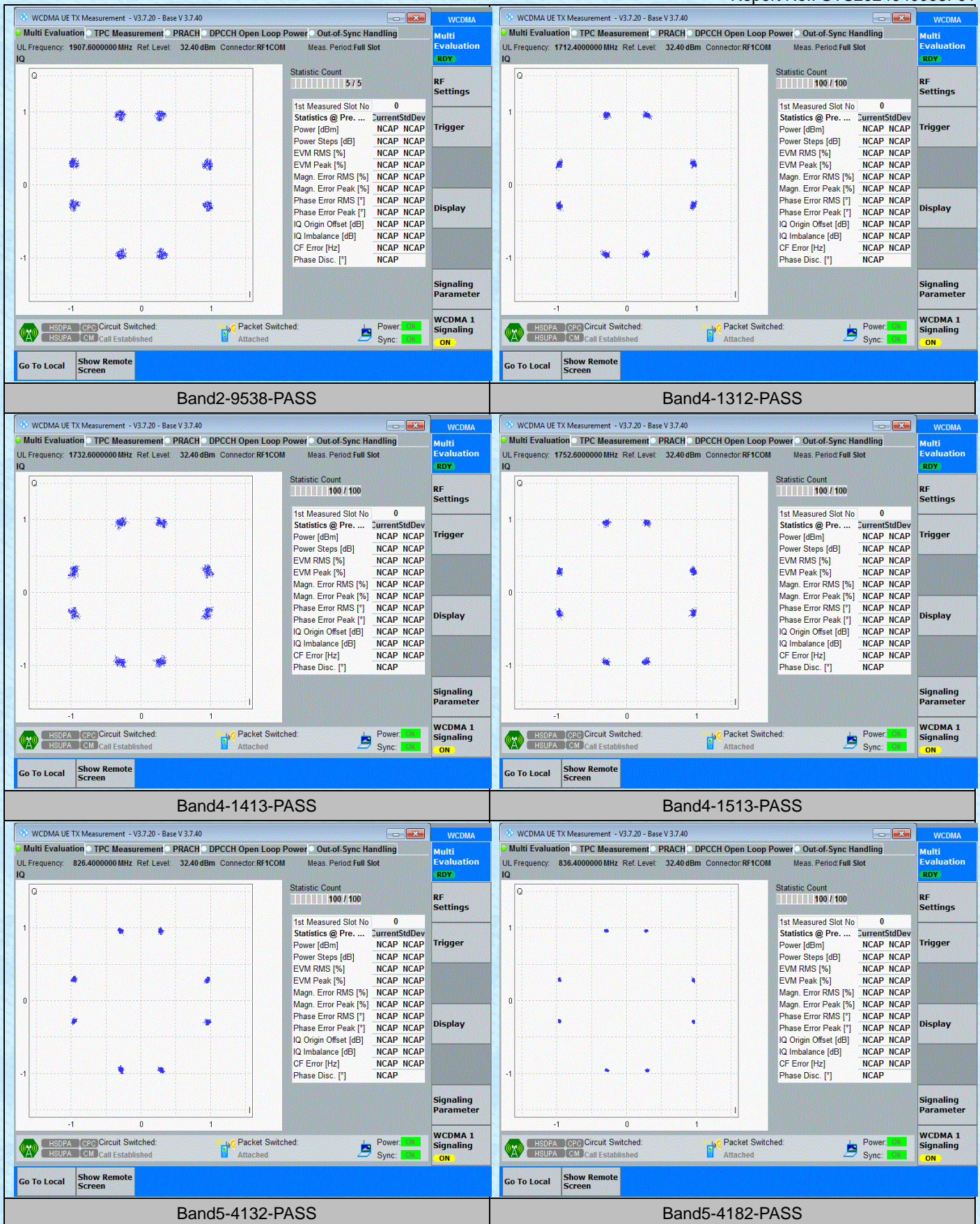
AppendixG: Modulation characteristics

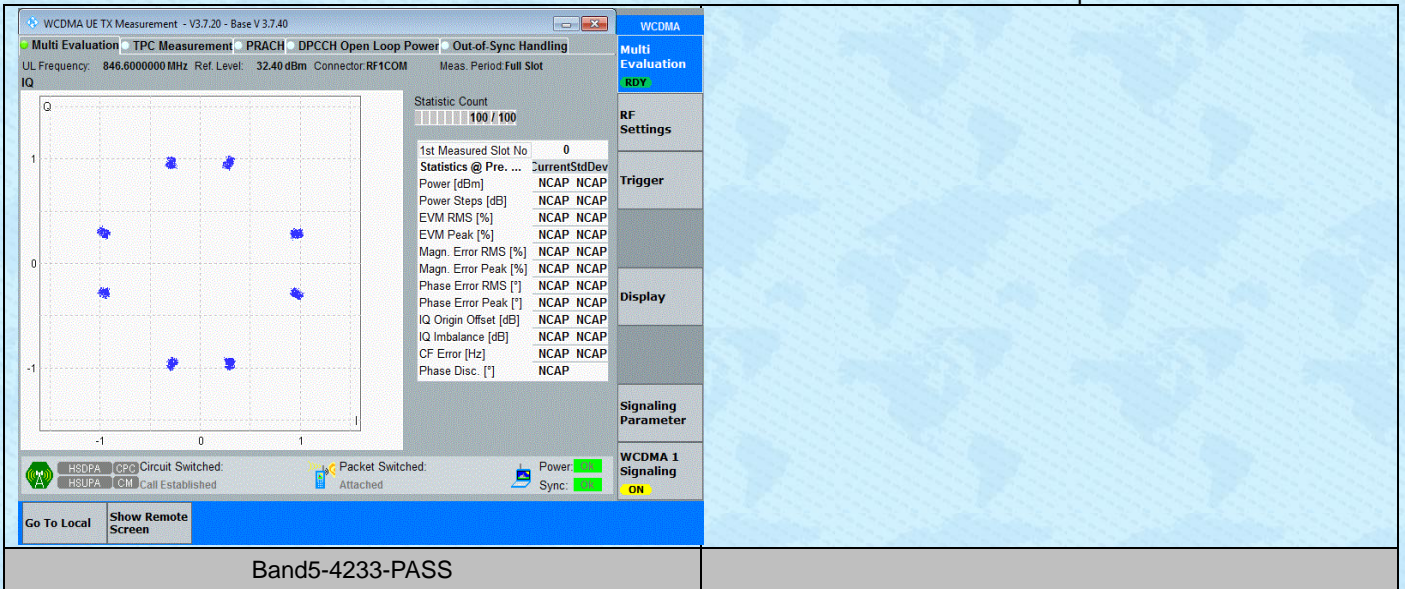
Test Result

Band	Channel	Result	Limit	Verdict
Band2	9262	PASS	---	PASS
Band2	9400	PASS	---	PASS
Band2	9538	PASS	---	PASS
Band4	1312	PASS	---	PASS
Band4	1413	PASS	---	PASS
Band4	1513	PASS	---	PASS
Band5	4132	PASS	---	PASS
Band5	4182	PASS	---	PASS
Band5	4233	PASS	---	PASS

Test Graphs







-----End-----