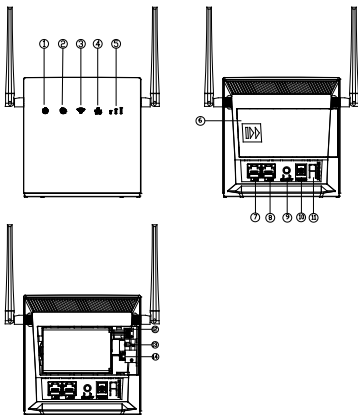


# **LTE CPE Quick Start**

## 1. Getting to know your router



### ① Power indicator

On: the device is powered on.

Steady blue: power on the device by the battery or the power adapter

Blue flicker: charging the battery

Steady blue: finish charging

Red flicker: battery power is less than 10%

Off: the device is powered off.

- |                            |   |
|----------------------------|---|
| ②network mode indicator    | <p>Steady blue: connected to a 4G network.</p> <p>Blue flicker: 4G data transfer.</p> <p>Steady red:</p> <p>---The SIM card is not recognized, the PIN has not been entered, or the PIN verification failed.</p> <p>---Failed to connect to a mobile network or an Ethernet network.</p> <p>Red flicker: Looking for network.</p> |
| ③Wi-Fi indicator           | <p>Steady on: Wi-Fi turned on.</p> <p>Off: Wi-Fi turned off.</p>  |
| ④LAN indicator             | <p>Steady on: At least one of the LAN ports is connected to a device.</p> <p>Blinking: data is being transmitted through a LAN port</p> <p>Off: No device is connected to a LAN port.</p>   |
| ⑤Signal strength indicator | <p>On: signal reception available(more bars mean better reception).</p> <p>Off: no reception.</p>   |
| ⑥battery back cover        |   |
| ⑦⑧LAN port                 | <p>Connect to computer, switch, or other LAN device.</p>  |

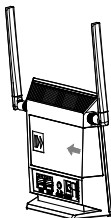
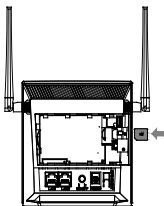
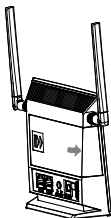
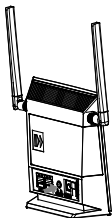
- |                   |   |
|-------------------|---|
| ⑨power button     | Press the button to power the device on or off;   |
| ⑩Power port       | Connect to compatible power adapter.  |
| ⑪WPS/Reset button | Press for 2 seconds to active WPS connection when Wi-Fi is turned on.<br><br>!! Restoring the default settings of the device will erase all previous settings.<br>When the device is powered on ,press the reset button and hold for about 8 seconds to restore the device to its factory settings. After the factory defaults are restored, the device will restart automatically. |
| ⑫Battery port     | Connect to compatible battery   |
| ⑬SIM card slot    | Install a standard SIM card to access the internet via an LTE data connection.  |
| ⑭USB port         | Connect to compatible USB adapter.<br>( Only for upgrade software )。  |

## 2. Installation

### Scenario 1: Accessing the Internet using an LTE network

#### Step 1: Installing the SIM card

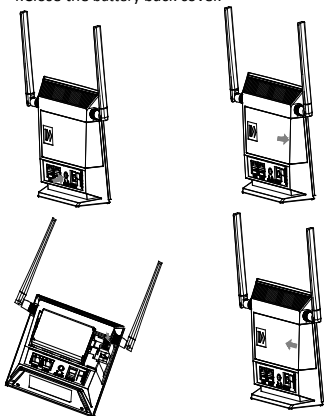
1. Power off the device.
2. Slide off the battery back cover.
3. Insert the SIM card into the card slot.
4. Close the battery back cover.



!! Do not remove the SIM card when it is in use, Doing so will affect the performance of your device and data stored on the SIM card may be lost.

## Step 2: Installing the battery

1. Power off the device.
2. Slide off the battery back cover.
3. Insert the battery into the battery slot, connect the battery with the device by the connector.
4. Close the battery back cover.



### **Step 3: Charging the Battery**

- 1.Power off the device.
- 2.Slide off the battery back cover.
- 3.Insert the battery into the battery slot, connect the battery with the device by the connector.
- 4.Connect the power adapter to the device.(you can power on the device to charge)

If the device has not been used for a long time or if the battery is fully depleted, the device may not power on immediately after the charger is plugged in. Please charge the battery for a while before attempting to power on the device;

### **Use the charger to charge the device**

#### **Note:**

- Only use chargers compatible with the CPE and provided by a designated manufacturer. Use of an incompatible charger or one from an unknown manufacturer may cause the CPE to malfunction, fail, or could even cause a fire. Such use voids all warranties, whether expressed or implied, on the product.
- The charger is an optional accessory. If it is not included in the package, you may contact an authorized dealer to buy a charger compatible with the CPE.
- The CPE's charger model is XXXXXX. For details about the specific charger model, contact an authorized dealer.

### **Step 4: Connecting cables**

!! To prevent interference caused by radio signals ,place the device at least 1 meter away from telephone and other electrical devices.

Do not change another unexpected power adapter unless manufacturer provide. For details about the details about the specific adapter model, contact an authorized dealer.



Once connected to a power outlet, press the power button to power the device on .

### **3. Setting up a Wi-Fi connection**

!! Make sure your client (computer, tablet, or smart phone)also supports Wi-Fi.

#### **Step 1: Enable Wi-Fi on the device**

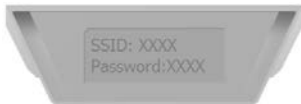
When the Wi-Fi indicator is steady on, the Wi-Fi function of the device is turned on .

!! For details about how to manually enable or disable the Wi-Fi function, refer to the WLAN settings section of the help information on the web management page.



## Step 2: Recording the SSID and Wi-Fi key

The default SSID and Wi-Fi key are printed on the device's bottom label.



!! To prevent unauthorized parties from accessing your Wi-Fi network, it is recommended that you change the SSID and Wi-Fi key from time to time. For details, see the help information on the web management page.

## Step 3: Setting up a Wi-Fi connection on your client

### ● Method 1: Setting up a Wi-Fi connection manually

1. From your Wi-Fi enabled client, scan for wireless networks in your area.
2. Connect to the network name that matches the SSID found on the device label.
3. When prompted for password, enter the Wi-Fi Key found on the device label. (The Wi-Fi key is case sensitive.) Your client will notify you when it is connected.

### ● Method 2: Setting up a Wi-Fi connection through WPS

If the client supports WPS, you can set up a WPS connection as follows:

1. Ensure that Wi-Fi is enabled on the client.
2. Press the WPS button for 2 seconds.
3. Activate the WPS connection on the client in 2 minutes.

!! For instructions about how to enable a WPS connection on the client, see the client's user guide.

## **4. Configuring your device**

1. After a client is connected to the device through Wi-Fi or LAN port, launch a browser on the client and visit <http://192.168.1.1>.
  2. Enter the user name and password to log in to the web management page. The default user name and password are printed on the device's bottom label.
  3. Follow the quick setup wizard to check or set network connection parameters step by step. For details, see the help information on the web management page.
- To protect your account, change the password after your first login. For details, see the help information on the web management page.
  - If you modify the SSID and Wi-Fi key, you must set up the Wi-Fi connection on the client again.

Once you are done, try opening a web page on the client to verify whether you have Internet access.

## **5. For more help**

If you are experiencing any issues with the device:

- Restart the device.
- See the help information on the web management page.
- Restore the device to its factory settings.
- Contact your service provider.

!! Figures in this guide are for your reference only. Specific models may vary slightly, contact your service provider for more detailed information.

## **6. Safety information**

This section contains important information about the operation of your device. It also contains information about how to use the device safely. Read this information carefully before using your device.

### **Electronic device**

Do not use your device if using the device is prohibited. Do not use the device if doing so causes danger or interference with other electronic devices.

### **Interference with medical equipment**

- Follow rules and regulations set forth by hospitals and health care facilities. Do not use your device where prohibited.
- Some wireless devices may affect the performance of hearing aids or pacemakers. Consult your service provider for more information.
- Pacemaker manufacturers recommend that a minimum distance of 15 cm be maintained between a device and a pacemaker to prevent potential interference with the pacemaker. If using a pacemaker, hold the device on the side opposite the pacemaker and do not carry the device in your front pocket.

### **Areas with flammables and explosives**

- Do not use the device where flammables or explosives are

stored (in a gas station, oil depot, or chemical plant, for example). Using your device in these environments increases the risk of explosion or fire. In addition, follow the instructions indicated in text or symbols.

- Do not store or transport the device in containers with flammable liquids, gases, or explosives.

### **Operating environment**

- Avoid dusty, damp, or dirty environments. Avoid magnetic fields. Using the device in these environments may result in circuit malfunctions.
- Before connecting and disconnecting cables, stop using the device and disconnect it from the power supply. Ensure that your hands are dry during operation.
- Place the device on a stable surface.
- Keep the device away from electronic appliances that generate strong magnetic or electric fields, such as a microwave oven or refrigerator.
- During thunderstorms, power off your device and remove all cables connected to it to protect against lightning strikes.
- Do not use your device during thunderstorms to protect your device against any danger caused by lightning.
- Ideal operating temperatures are 0°C to +40°C. Ideal storage temperatures are -20°C to +70°C. Extreme heat or cold may damage your device or accessories.
- Keep the device and accessories in a well-ventilated and cool area away from direct sunlight. Do not enclose or cover your device with towels or other objects.
- Do not place the device in a container with poor heat

dissipation, such as a box or bag.

- To protect your device or accessories from fire or electrical shock hazards, avoid rain and moisture.
- Keep the device away from sources of heat and fire, such as a heater, microwave oven, stove, water heater, radiator, or candle.
- Do not place any object, such as a candle or a water container, on the device. If any foreign object or liquid enters the device, immediately stop using it, power it off, and remove all cables connected to it.
- Do not block device openings. Reserve a minimum of 10 cm around the device to dissipate heat.
- Stop using your device or applications for a while if the device is overheated. If skin is exposed to an overheated device for an extended period, low temperature burn symptoms, such as red spots and darker pigmentation, may occur.
- Do not touch the device's antenna. Otherwise, communication quality may be reduced.
- Do not allow children or pets to bite or suck the device or accessories. Doing so may result in damage or explosion.
- Observe local laws and regulations, and respect the privacy and legal rights of others.
- The device should be installed and operated with a minimum distance of 20 cm between the radiator and your body.
- Keep the device in a place with good reception. The distance between the device and other metal materials (such as metal brackets or metal doors and windows) should be greater than 25 cm and the distance between

the device should be greater than 30 cm.

### **Child's safety**

- Comply with all precautions with regard to child's safety. Letting children play with the device or its accessories may be dangerous. The device includes detachable parts that may present a choking hazard. Keep away from children.
- The device and its accessories are not intended for use by children. Children should only use the device with adult supervision.

### **Accessories**

- Using an unapproved or incompatible power adapter, charger or battery may cause fire, explosion or other hazards.
- Choose only accessories approved for use with this model by the device manufacturer. The use of any other types of accessories may void the warranty, may violate local regulations and laws, and may be dangerous.

### **Power adapter safety**

- The power plug is intended to serve as a disconnect device.
- For pluggable devices, the socket-outlet shall be installed near the devices and shall be easily accessible.
- Unplug the power adapter from electrical outlets and the device when not in use.
- Do not drop or cause an impact to the power adapter.
- If the power cable is damaged (for example, the cord is exposed or broken), or the plug loosens, stop using it at

once. Continued use may lead to electric shocks, short circuits, or fire.

- Do not touch the power cord with wet hands or pull the power cord to disconnect the power adapter.
- Do not touch the device or the power adapter with wet hands. Doing so may lead to short circuits, malfunctions, or electric shocks.
- If your power adapter has been exposed to water, other liquids, or excessive moisture, take it to an authorized service center for inspection.
- Ensure that the power adapter meets the requirements of Clause 2.5 in IEC60950-1/EN60950-1/UL60950-1 and has been tested and approved according to national or local standards.

### **Cleaning and maintenance**

- During storage, transportation, and operation of the device, keep it dry and protect it from collision.
- Keep the device and accessories dry. Do not attempt to dry it with an external heat source, such as a microwave oven or hair dryer.
- Do not expose your device or accessories to extreme heat or cold. These environments may interfere with proper function and may lead to fire or explosion.
- Avoid collision, which may lead to device malfunctions, overheating, fire, or explosion.
- If the device is not going to be used for an extended period of time, power it off, and remove all cables connected to it.
- If anything unusual occurs (for example, if the device

emits smoke or any unusual sound or smell), immediately stop using it, power it off, remove all cables connected to it, and contact an authorized service center.

- Do not trample, pull, or excessively bend any cable. Doing so may damage the cable, causing the device to malfunction.
- Before you clean or maintain the device, stop using it, stop all applications, and disconnect all cables connected to it.
- Do not use any chemical detergent, powder, or other chemical agents (such as alcohol and benzene) to clean the device or accessories. These substances may cause damage to parts or present a fire hazard. Use a clean, soft, and dry cloth to clean the device and accessories.
- Do not place magnetic stripe cards, such as credit cards and phone cards, near the device for extended periods of time. Otherwise the magnetic stripe cards may be damaged.
- Do not dismantle or remanufacture the device and its accessories. This voids the warranty and releases the manufacturer from liability for damage.

### **Environmental protection**

- The device and its accessories (if included), such as the power adapter, headset, and battery should not be disposed of with household garbage.



**Warning:**

This equipment has been tested and found to comply with the limits for a Class B digital device, pursuant to Part 15 of the FCC Rules. These limits are designed to provide reasonable protection against harmful interference in a residential installation. This equipment generates uses and can radiate radio frequency energy and, if not installed and used in accordance with the instructions, may cause harmful interference to radio communications.

However, there is no guarantee that interference will not occur in a particular installation. If this equipment does cause harmful interference to radio or television reception, which can be determined by turning the equipment off and on, the user is encouraged to try to correct the interference by one or more of the following measures:

- Reorient or relocate the receiving antenna.
- Increase the separation between the equipment and receiver.
- Connect the equipment into an outlet on a circuit different from that to which the receiver is connected.
- Consult the dealer or an experienced radio/TV technician for help.

Changes or modifications not expressly approved by the party responsible for compliance could void the user's authority to operate the equipment.

This device complies with part 15 of the FCC Rules. Operation is subject to the following two conditions: (1) This device may not cause harmful interference, and (2) this device must accept any interference received, including interference that may cause undesired operation.