



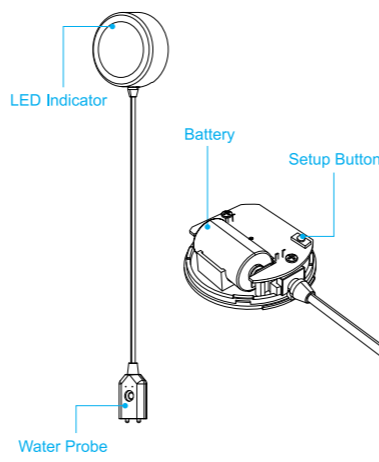
Introduction

The Water Leak Detector keeps you connected and aware to potentially costly water activity in your home. Whether you're in the kitchen — or on vacation — you can receive notifications when a leak is detected.

Specifications

Power	DC3V,1*CR2 Battery Required
Working Current	<150mA
Standby Current	<15uA
Network	WiFi 2.4G b/n/g
Operation Temperature	-10 C~55 C

Product overview

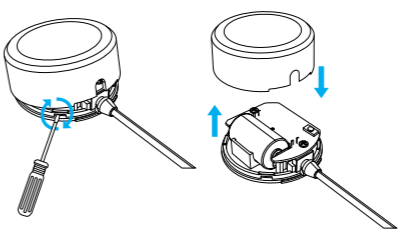


What you will need ?

- 1. WiFi Access**
Note: only 2.4 GHz b/g/n networks supported
The detector requires to use WiFi network communication and must be installed within range of a strong signal source for reliable performance. You will need to know your network(SSID) and password to connect to your network.
- 2. Mobile Device**
Requires iOS 9.3 or later or Android 4.0 or later.
- 3. Tools**
Prepare a small flathead screwdriver to open the detector.

Power up the detector

- Attach the flathead screwdriver to the gap between top cover and back cover and gently rotate the screwdriver to lever the top cover.
- Pull out the battery insulator to power up the detector.
- Place the top cover back on the detector after you added the detector to App.



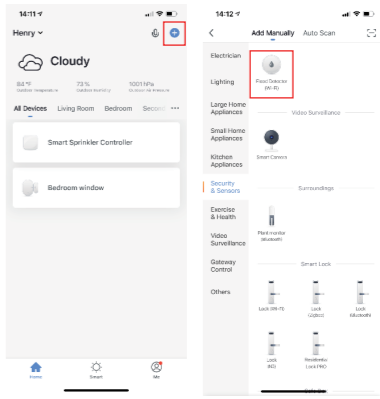
Download the App



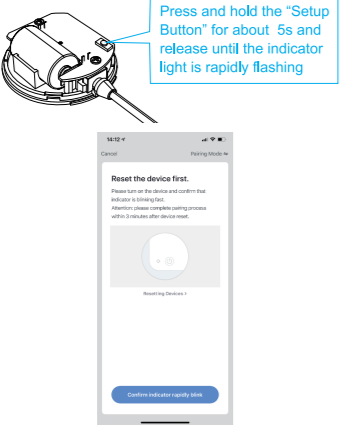
- Search the keyword "Smart Life" in APP Store or Google Play to download the App.
- Launch the App and you will need to register a user account to log in.

Add a new detector to App

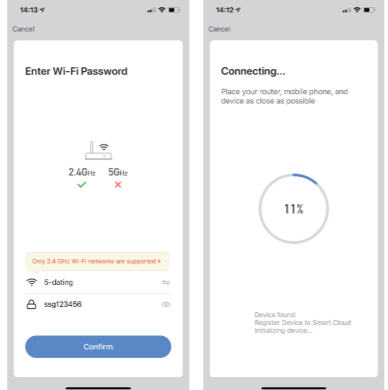
- Tap the add icon "+" on the top right to add a new device.
- Scroll through the list and select "Flood Detector".



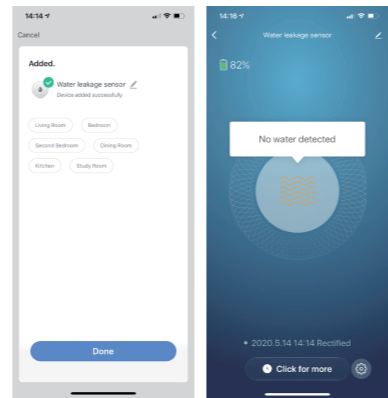
- After powered up the detector, press and hold the "Setup Button" for about 5s and release until the indicator light is rapidly flashing that indicates the detector is ready to configure.



- Enter the password of the WIFI network that your mobile device connected, then it will start registering the device to the cloud.



- Once the device was added successfully, you will be alerted when a leak is detected.



Mounting the detector

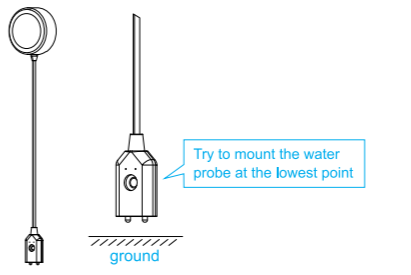
Note: we suggest you do not mount the detector on the object which made of metal, because it will interfere with the WiFi signal and shorten the distance of the WiFi signal. Please make sure the position where you want to mount the detector is covered by the WiFi signal.

Place the detector under sinks, near bathtubs, water heaters, pipes, filters, and anywhere a water leak may be present.



- Clean up the place you want to mount the detector
- Mount the detector to with the included double-side adhesive tap.

- Mount water probe with the included screws next to a possible source of flooding.



In case of an alert

To preserve battery life, it can take up to 1 minute for the detector to sense a leak. After you've addressed the cause of the alert, wipe dry the water probe and put it back in place.

Low power alert and battery replacement

Please replace battery when you get a Low-battery notification from the detector, the battery type used for the detector is CR2.

Troubleshooting

Can't receive alert

- Check if the Notification is allowed on your mobile phone.
- WiFi network disconnected.

说明书尺寸: 60 × 80mm

FCC Requirement

changes or modifications not expressly approved by the party responsible for compliance could void the user's authority to operate the equipment.

This device complies with Part 15 of the FCC Rules. Operation is subject to the following two conditions:

- (1) this device may not cause harmful interference, and
- (2) this device must accept any interference received, including interference that may cause undesired operation.

Note: This equipment has been tested and found to comply with the limits for a Class B digital device, pursuant to Part 15 of the FCC Rules. These limits are designed to provide reasonable protection against harmful interference in a residential installation. This equipment generates, uses, and can radiate radio frequency energy, and if not installed and used in accordance with the instructions, may cause harmful interference to radio communications. However, there is no guarantee that interference will not occur in a particular installation. If this equipment does cause harmful interference to radio or television reception, which can be determined by turning the equipment off and on, the user is encouraged to try to correct the interference by one or more of the following measures:

- Reorient or relocate the receiving antenna.
- Increase the separation between the equipment and receiver.
- Connect the equipment into an outlet on a circuit different from that to which the receiver is connected.
- Consult the dealer or an experienced radio/TV technician for help.

FCC 20cm Statement

This equipment complies with FCC radiation exposure limits set forth for an uncontrolled environment. This equipment should be installed and operated with a minimum distance of 20cm between the radiator & your body. This transmitter must not be co-located or operating in conjunction with any other antenna or transmitter.