

# Outdoor Switch User Manual

The Outdoor Switch allows you to control electronics from your mobile device, it is rain-tight and features dual outlets so you can control two electronics simultaneously. It also seamlessly works with Amazon Alexa and the Google Assistant, which allows you to control your smart home directly, just by using your voice.

## Download the App and registration

1. Search the keyword "Smart Life" in APP Store or Google Play to download the App.
2. Open the App and register an account to log in.

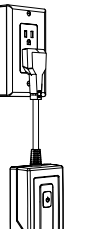


Smart Life



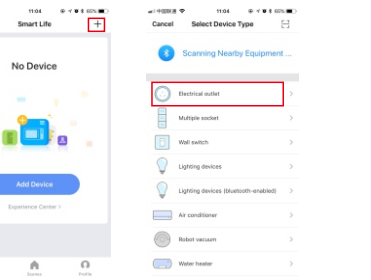
### Set up the switch

1. Plug your Outdoor Switch into a grounded wall outlet and let the unit hang down freely, ensure your mobile device's Wi-Fi is turned on and is connected to your home Wi-Fi Network

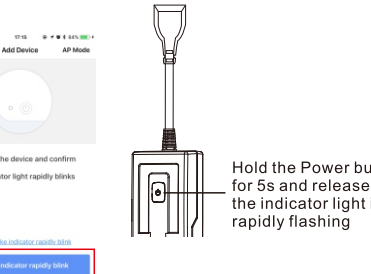


Note: 2.4 GHz b/g/n networks are compatible, 5 GHz networks are not compatible

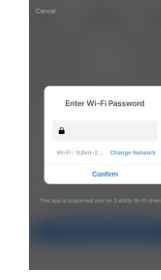
2. Tap the add icon "+" on the top right and select "Electrical outlet" from the device type list.



3. To make the switch enter into WiFi configuration mode, hold the power button for 5s and release until the indicator light is rapidly blinking that indicates the switch is ready to configure.



4. Enter the password of the WIFI network that your mobile device connected



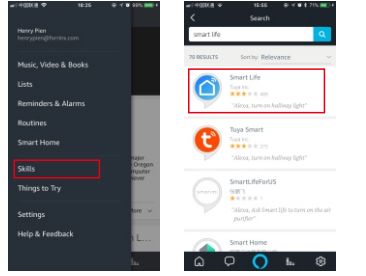
5. Once the switch was added successfully, you will be able to quickly control it within the App or using Amazon Alexa and Google Assistant. you can also share it with your family and name it whatever you want, the name will be used for voice control.

### \*Each Outlet Could Be Controlled Separately

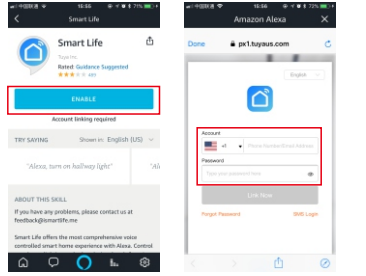


## How connect the switch to Amazon Alexa

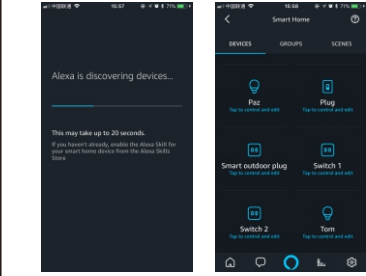
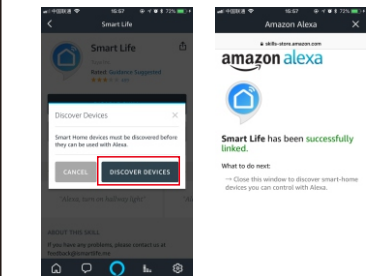
1. Open the Amazon Alexa App, tap "Skill" on the menu to go to the Amazon Skill Store
2. Search the Skill name "Smart Life" in the search bar



3. Enable the Skill and type in your login information from the App account to finish the account linking



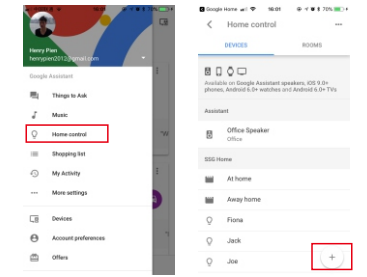
4. Tap "Discover Devices" to sync your devices to Alexa, after about 20s, the devices will be discovered and Alexa will tell you "I found xxx devices", then you can control your devices using voice through your Amazon Alexa devices.



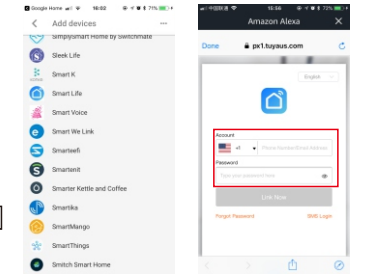
The following voice commands are supported:  
**Alexa, turn on/off "xxx"**

## How connect the switch to Google Assistant

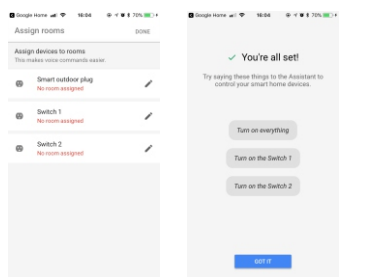
1. Open the Google Home App, tap "Home Control" on the menu
2. Tap the add icon "+" on the bottom right



3. Find "Smart Life" from the list
4. Type in your login information from the App account to finish the account linking



5. Once the linking was successful, you can assign the devices to rooms, then your devices will be listed in the Home Control list.

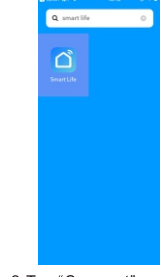


The following voice commands are supported:  
**Alexa, turn on/off "xxx"**

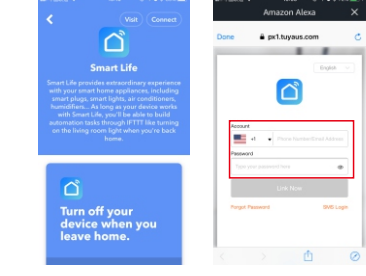
## How to connect device to IFTTT

IFTTT is a service that lets you connect other services together. When an action happens with one service, IFTTT automatically triggers a separate action with another service. In other words: "If this happens, then have that happen."

1. Open the IFTTT App, type "Smart Life" on search bar



2. Tap "Connect" and then type in your login information from the App account to finish the account linking



3. After linked to IFTTT successfully, you can make an Applet to link with other IFTTT service together. Tap "New Applet" and follow the instructions to set up your triggers and actions for your needs. You can also add Applets other users have created by searching or browsing through Discover and Search tabs.

## LED indicator status

LED Activity	Description
Rapidly flashing red	Ready for setup
Red light always on	Configured and working properly
Red light off	Network error
Green light always on	At least 1 outlet is power-on
Green light off	All outlets power-off

## Specifications

WiFi technology	2.4GHz 802.11 b/g/n
OS requirements	Android 4.1/iOS 9 or higher
Electrical rating	120V~/15A/60Hz/1800W



## FCC WARNING

This device complies with part 15 of the FCC Rules. Operation is subject to the following two conditions: (1) this device may not cause harmful interference, and (2) this device must accept any interference received, including interference that may cause undesired operation.

Any changes or modifications not expressly approved by the party responsible for compliance could void the user's authority to operate the equipment.

NOTE: This equipment has been tested and found to comply with the limits for a Class B digital device, pursuant to Part 15 of the FCC Rules. These limits are designed to provide reasonable protection against harmful interference in a residential installation. This equipment generates, uses and can radiate radio frequency energy and, if not installed and used in accordance with the instructions, may cause harmful interference to radio communications. However, there is no guarantee that interference will not occur in a particular installation. If this equipment does cause harmful interference to radio or television reception, which can be determined by turning the equipment off and on, the user is encouraged to try to correct the interference by one or more of the following measures:

- Reorient or relocate the receiving antenna.
- Increase the separation between the equipment and receiver.
- Connect the equipment into an outlet on a circuit different from that to which the receiver is connected.
- Consult the dealer or an experienced radio/TV technician for help.

To maintain compliance with FCC's RF Exposure guidelines, This equipment should be installed and operated with minimum 20cm distance between the radiator your body: Use only the supplied antenna.