

## Smart WiFi Contact Sensor Manual



MC08-W1

Please read this user manual before using and installation

### Introduction

Whether you are at home or away, the smart WiFi contact sensor will push notification to alert you when door/window is opened or closed. It's easy to setup, no hub required, connects to your home Wi-Fi and can detect the realtime status of door or window. What's more, you can set up Automations to tell the lights to turn on and off as door/window is opened or closed.

### Main Features

- 24/7 Monitoring**  
 Detect door/window opening and closing in real time. Receive instant alerts when door/window is opened or closed.
- Flexible Installation**  
 Easy to setup, Simple Do-It-Yourself, No hub required.

- 1 -

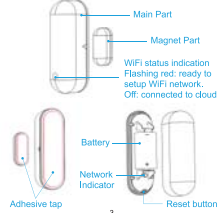
- Super Low Power Consumption**  
 Minimize energy savings with ultra-low power MCU and WiFi module.
- Home Automation**  
 Set devices to automatically turn on or off as door/window is opened or closed.
- Works with IFTTT**  
 Create an IFTTT applet to turn lamps on or link with other electronics as door/window is opened or closed.

### Specifications

|                       |                              |
|-----------------------|------------------------------|
| Power                 | DC5V, 1*CR2 Battery Required |
| Working current       | <150mA                       |
| Standby current       | <15uA                        |
| Network               | WiFi 2.4G b/g/n              |
| Operation Temperature | -10°C ~ 65°C                 |

- 2 -

### Hardware Overview



- 3 -

### Download the App



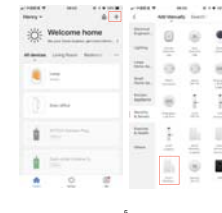
- Search the keyword "Smart Life" in APP Store or Google Play to download the App.
- Open the App and register an account to log in.

### WiFi Setup

Note: only 2.4 GHz b/g/n networks supported

- 4 -

- Tap the add icon "+" on the top right and select "Door/Window Sensor" from the device type list.



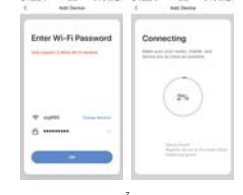
- 5 -

- Power on the contact sensor, press and hold the "Reset button" for 5s a about and release until the indicator light is rapidly flashing that indicates the contact sensor is ready to configure.



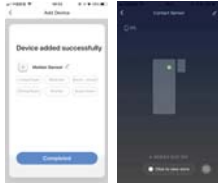
- 6 -

- Enter the password of the WiFi network that your mobile device connected, then it will start registering the device to the cloud.



- 7 -

- Once the device was added successfully, you will be alerted when door/window is opened or closed.



- 8 -

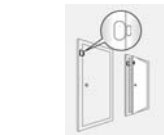
### Installation

The contact sensor can be installed on doors, windows, and any other objects that can open and close. Note: we suggest you do not mount the sensor on the door/window which made of metal, because it will interfere the WiFi signal and shorten the distance of the WiFi signal.

- Please make sure the position where you want to mount the contact sensor is covered by WiFi signal.
- Clean up the place you want to mount the contact sensor.
  - Tear off the adhesive tape from the main part and magnet part.
  - Stick the contact sensor to the place where you want.

Note: the magnet part must be placed on the side of the main part with a triangular sign.

- 9 -



Note: the gap between the main part and magnet part should be less than 1cm.  
**Low power alert and battery replacement**  
 When the battery runs low, you will get an alert on the App, please replace it with a new one, the battery type used for the contact sensor is CR2.

- 10 -

### Reset

Power on the contact sensor, press and hold the "Reset button" for 5s a about and release until the indicator light is rapidly flashing that indicates the contact sensor is reset.

### How to connect device to IFTTT

IFTTT is a service that lets you connect other services together. When an action happens with one service, IFTTT automatically triggers a separate action with another service. In other words: "If this happens, then have that happen."

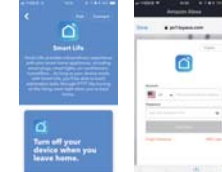
- 11 -

- Open the IFTTT App, type "Smart Life" on search bar.



- 12 -

- Tap "Connect" and then type in your login information from the App account to finish the account linking.



- 13 -

- After linked to IFTTT successfully, you can make an Applet to link with other IFTTT service together. Tap "New Applet" and follow the instructions to set up your triggers and actions for your needs. You can also add Applets other users have created by searching or browsing through Discover and Search tabs.

### Troubleshooting

#### Can't receive alert

- Check if the Notification is allowed on your mobile phone.
- WiFi network disconnected.

- 14 -

Changes or modifications not expressly approved by the party responsible for compliance could void the user's authority to operate the equipment.  
 This device complies with Part 15 of the FCC Rules. Operation is subject to the following two conditions:  
 (1) The device may not cause harmful interference, and  
 (2) The device must accept any interference received, including interference that may cause undesired operation.

Note: This equipment has been tested and found to comply with the limits for a Class B digital device, pursuant to Part 15 of the FCC Rules. These limits are designed to provide reasonable protection against harmful interference in a residential installation. This equipment generates, uses, and can radiate radio frequency energy, and if not installed and used in accordance with the instructions, may cause harmful interference to radio communications. However, there is no guarantee that interference will not occur in a particular installation. If this equipment does cause harmful interference to radio or television reception, which can be determined by turning the equipment off and on, the user is encouraged to try to correct the interference by one or more of the following measures:

- Reorient or relocate the receiving antenna.
- Increase the separation between the equipment and receiver.
- Connect the equipment into an outlet on a circuit different from that to which the receiver is connected.
- Consult the dealer or an experienced radio/TV technician for help.

This equipment complies with FCC radiation exposure limits set forth for an uncontrolled environment. This equipment should be installed and operated with a minimum distance of 20cm between the radiator & your body. This transmitter must not be co-located or operating in conjunction with any other antenna or transmitter.

尺寸: 60×65mm 风琴折 128g双铜 正反面 四色印刷