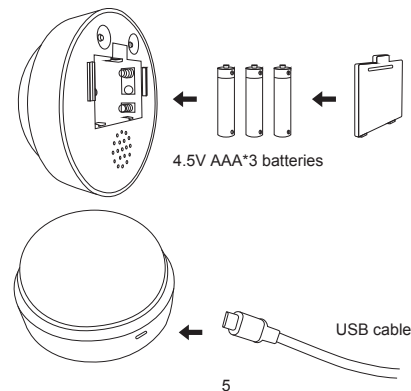


4. The shorter the linear distance between receiver and transmitter, the better the wall penetration performance of signal is.

### Installation Method

#### For Receiver:

Place 3 AAA batteries into receiver or insert USB cable into the port.

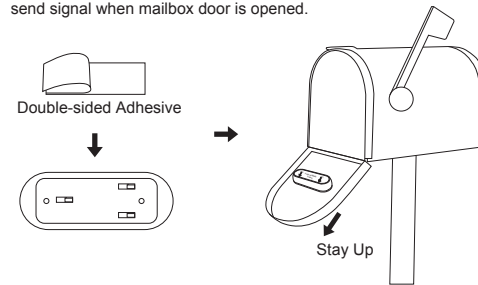


5

**!** Note: the learning code receiver needs to be recoded if you want to add extra transmitters.

#### For Transmitter:

Stick it on the bracket with double-sided adhesive and stick it on the mailbox door. Install transmitter on the bracket with right direction. It will send signal when mailbox door is opened.



6

**!** Note: Please test functions after installation.

### Operating Instruction

- Select mailbox prompt tone: Press the light cover 5 seconds each time to choose the prompt tone. There are 3 tones to choose from. You will hear prompt tone along with "Ding" sound when mailbox is opened.
- If you missed the instant notification when mailbox was opened, the orange flashing light slowly reminds you that there is a new mail. Short press the light cover to remove the reminds and wait for new mails.
- Pairing mailbox transmitter procedure: a) Long press the volume button on the receiver for 5 seconds until you hear a sound and see orange flashing light. b) Turn your mailbox transmitter over at the same time. c) It is successful if you hear "Ding" and mailbox prompt tone. d) Turn your mailbox transmitter over again to confirm the pairing is done.
- Pairing receiver with extra transmitters, like doorbell push button, door sensor, etc.. (This function needs to be equipped with the above transmitter, this mailbox transmitter does not have this function)
  - Short press the music button to choose music from 58 melodies.
  - Long press the volume button on the receiver for 5 seconds until you hear a sound and see orange flashing light.
  - Trigger your transmitter at the same time.
  - It is successful if you hear the music that you chosen.

7

- Trigger your transmitter again to confirm the pairing is done.
- Reset: Long press the music button for 5 seconds until you hear a sound. All transmitters bound to receiver will be cleaned.

### Warning

- You'd better use the high quality battery, avoid using the ones with short life and easy leakage of electrolyte.
- Be sure to protect the precision electronic components, and non-professionals are not allowed to open it for maintenance.

### Trouble Shooting

- The receiver doesn't sound.
  - Check whether the power supply of the receiver is working.
  - Check the mailbox transmitter battery, and if necessary, replace the battery.
  - The receiver may not be paired with the mailbox transmitter.

8

# Mailbox Alert User Manual

### Product Overview

The mailbox alert allows you to receive instant sound and flashing light notifications every time the mail arrives. It also flashes orange light slowly after mailbox was opened, in case you missed the instant notifications.

#### Main Features:

- Get instant notifications once the mailbox is opened.
- Remind you that there is a new mail if you missed instant notification.
- 3 mailbox remind tone can be selected.
- Compatible with doorbell push button.
- IP55 waterproof transmitter.
- Learning code and expandable extra transmitters or receivers.
- Easy to install and operate.

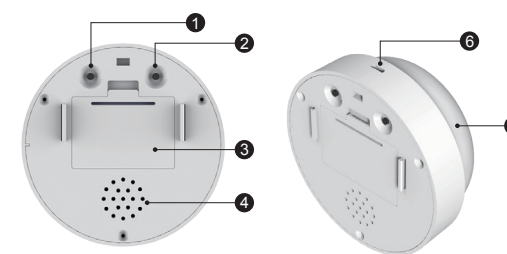
1

### Specifications

Input of Receiver:	DC 5V or DC 4.5V AAA*3
Operating Current of Receiver:	<100MA
Standby Current of Receiver:	<600UA
Power of Transmitter:	12V 23A Alkaline Battery
Waterproof of Transmitter:	IP55
Frequency:	433.92MHz
Wireless Distance:	250m (800ft) in open air
Operation Temperature:	-20 C ~55 C

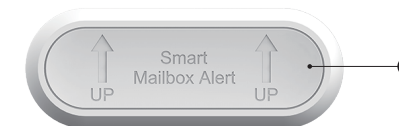
2

### Structure Diagram



- Volume Button/Pairing Button
- Music Button/Reset Button
- Battery Cover
- Speaker
- Light Cover/Select Mailbox Prompt Tone
- 5V USB Port

3



7. Mailbox Sensor/Transmitter

### Notice Before Installation

Mailbox alert relies on wireless radio technology which is subject to physical and environmental considerations. These products do not have an out of range function and as such should be tested periodically in the setting in which they are to be used to understand their area of effective operation.

- Please install receiver as close to the mailbox transmitter as possible.
- Radio signal will be affected by metal, wall, concrete and barrier etc., please first test whether the operation range you choose is proper before install them.
- Please install the receivers away from induction cooker, television and horn where there is interference of magnetic and signal.

4

**FCC Caution:**

This device complies with part 15 of the FCC Rules. Operation is subject to the following two conditions: (1) This device may not cause harmful interference, and (2) this device must accept any interference received, including interference that may cause undesired operation.

Any Changes or modifications not expressly approved by the party responsible for compliance could void the user's authority to operate the equipment.

**Note:** This equipment has been tested and found to comply with the limits for a Class B digital device, pursuant to part 15 of the FCC Rules. These limits are designed to provide reasonable protection against harmful interference in a residential installation. This equipment generates uses and can radiate radio frequency energy and, if not installed and used in accordance with the instructions, may cause harmful interference to radio communications. However, there is no guarantee that interference will not occur in a particular installation. If this equipment does cause harmful interference to radio or television reception, which can be determined by turning the equipment off and on, the user is encouraged to try to correct the interference by one or more of the following measures:

- Reorient or relocate the receiving antenna.
- Increase the separation between the equipment and receiver.
- Connect the equipment into an outlet on a circuit different from that to which the receiver is connected.
- Consult the dealer or an experienced radio/TV technician for help.

The device has been evaluated to meet general RF exposure requirement. The device can be used in portable exposure condition without restriction.