

Smart WiFi Motion Sensor HP03W Manual



Please read this user manual before using and installation

Introduction

Wherever you are, be alerted when motion is detected in your home Wi-Fi Motion Sensor, keeping you and your family safe. It's easy to setup, no hub required, connects to your home Wi-Fi and can detect motion up to 15 feet with 90° view range. Whether you are at home or away, push notifications will alert you whenever motion is detected. What's more, you can set up Automations to tell the lights to turn on and off as you come and go.

Main Features

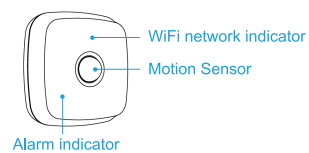
- 24/7 monitoring, receive instant alerts when there is unexpected movement in your home.
- Broad field of vision, detect motion up to 15 feet with 90° view range.
- Home automation, set devices to automatically turn on or off as people come and go.
- Easy to setup, Simple Do-It-Yourself, No hub required.
- Simply mount it to a wall or ceiling with the magnetic mount.

- 1 -

Specifications

Power	DC3V,2*AAA batteries Required
Working current	<150mA
Standby current	<100uA
Detection Range	15FT x 90°
Detection Angle	Horizontal 100 degree; Vertical 90 degree
Network	WiFi 2.4G b/n/g
Operation Temperature	-10℃~55℃

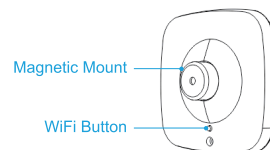
Hardware Overview



- 2 -

WiFi status indication

Flashing red: ready to setup WiFi
Off: connected to cloud



Download the App



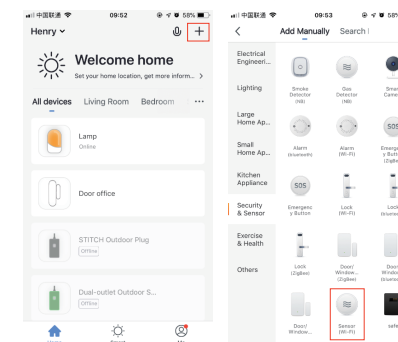
1. Search the keyword " Smart Life " in APP Store or Google Play to download the App,
2. Open the App and register an account to log in.

- 3 -

WiFi Setup

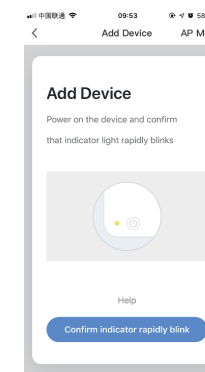
Note: only 2.4 GHz b/g/n networks supported

1. Tap the add icon "+" on the top right and select " Motion Sensor " from the device type list.



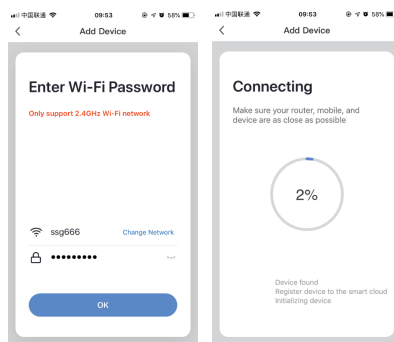
- 4 -

2. Press and hold the " WiFi button " for 5s and release until the indicator light is rapidly flashing that indicates the switch is ready to configure.



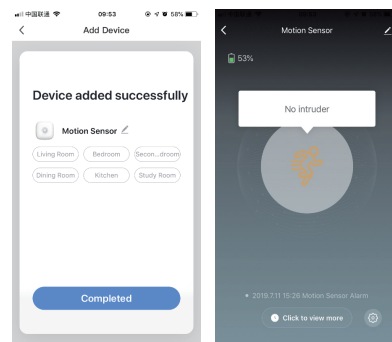
- 5 -

3. Enter the password of the WIFI network that your mobile device connected, then it will start registering the device to the cloud.



- 6 -

4. Once the device was added successfully, you will be alerted when there is unexpected movement in your home.



- 7 -

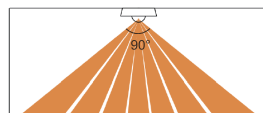
Installation

Note:

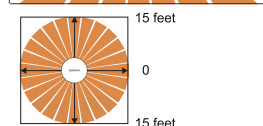
Avoid placing the detector within proximity of the following sources of interference: reflective surfaces, direct air flow from vents, fans, windows, sources of steam/oil vapor, infrared light sources and objects causing temperature changes such as heaters, refrigerators and ovens.

Detection coverage: Up to 15 feet with 90° view range

Side View



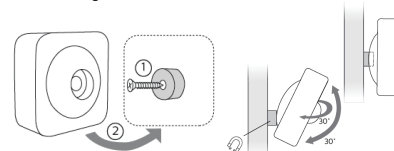
Top View



- 8 -

Mounting options:

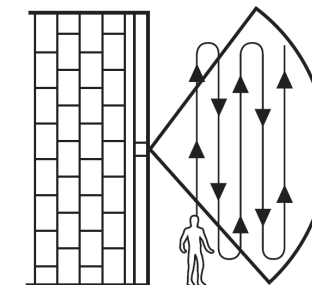
- A: Free-standing
- B: Wall mounted
- C: Ceiling mounted



Walking-test

Please do the walking test after mounted to make sure the sensor is covering the area you would like to monitor, if not, you could adjust the position or angle of the detector head to obtain approximately the desired detection area as required.

- 9 -



Troubleshooting Can't receive alert

1. Check if the Notification is allowed on your mobile phone.
2. WiFi network disconnected.

- 10 -

changes or modifications not expressly approved by the party responsible for compliance could void the user's authority to operate the equipment.
This device complies with Part 15 of the FCC Rules. Operation is subject to the following two conditions:

- (1) this device may not cause harmful interference, and
- (2) this device must accept any interference received, including interference that may cause undesired operation.

Note: This equipment has been tested and found to comply with the limits for a Class B digital device, pursuant to Part 15 of the FCC Rules. These limits are designed to provide reasonable protection against harmful interference in a residential installation. This equipment generates, uses, and can radiate radio frequency energy, and if not installed and used in accordance with the instructions, may cause harmful interference to radio communications. However, there is no guarantee that interference will not occur in a particular installation. If this equipment does cause harmful interference to radio or television reception, which can be determined by turning the equipment off and on, the user is encouraged to try to correct the interference by one or more of the following measures:

- Reorient or relocate the receiving antenna.
- Increase the separation between the equipment and receiver.
- Connect the equipment into an outlet on a circuit different from that to which the receiver is connected.
- Consult the dealer or an experienced radio/TV technician for help.

This equipment complies with FCC radiation exposure limits set forth for an uncontrolled environment. This equipment should be installed and operated with a minimum distance of 20cm between the radiator & your body. This transmitter must not be co-located or operating in conjunction with any other antenna or transmitter.

尺寸: 60×72mm 风琴折 128g双铜 正反面 四色印刷