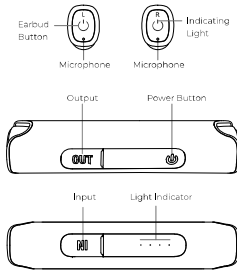


Linklike
Wired Headset
User Manual
Classic 8

Walk through this user manual before the first use.

Classic 8 overview



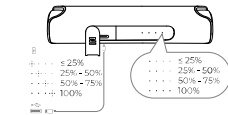
Wearing

Choose the earbuds that fit your ears the best. Keep the "R" and "L" upright, not upside down, and insert the earbuds into the inner canal of your ears.

Warning: Try rotating the pod to make sure the pod fits comfortably and securely in the ear canal. Otherwise, the pod can easily fall off during workout.

Charging

Press the power button on the charging case to check its power status.



Check the earbud's power status in your phone's notification bar after connected.

| Power status indicator | |
|--------------------------|------------------------------------------------------|
| Earbud low battery alarm | Red rapid blinking 2 times every 30s until power off |
| Earbud in charging | Solid red |

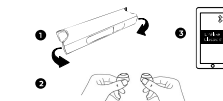
| | |
|---------------------------------|------------------------------------------------------|
| Earbud fully charged | Solid blue 60s and then off |
| Earbud power off | Solid red 3s and then off |
| Charging case fully charged | All lights solid blue |
| Charging case in charging | The lights will be on to match the charging progress |
| Charging case output | One light slow blinking 10s and then off |
| Charging case low battery alarm | The last battery light rapid blinking |

To preserve battery lifespan, fully charge at least once every 1 month.

Turn On / Off

- The earbuds switch on automatically when taking them out of the charging case. To manually switch on the earbuds, press the multifunction button on both your earbuds for about 3s.
- The earbuds switch off automatically when placing them back in the charging case. To manually switch off the earbuds, press and hold the multifunction button on any earbud for 3s (Solid red for 3s and then off).

Pairing



- First pairing:** Take the pair of earbuds out of the charging case, search and tap "Linklike Classic 8" in your device's Bluetooth Settings to connect.

- Re-pairing:** Take the pair of the earbuds (binaural model) or the right pod (single-use model) out of the charging case, they will reconnect to the last-paired device automatically.

| | |
|-----------------------------------------|--------------------------------------|
| Switched on and no Bluetooth connection | Blue rapid blinking 2 times every 3s |
| Bluetooth pairing | Red and blue rapid blinking |
| Bluetooth pairing succeeded | All lights off |

Controls

Warning: Hold the pod first, and then press the button to avoid hurting your ear.



Warranty Card

Buyer Name: _____
 Phone Number: _____
 Order ID: _____
 Date of Purchase: _____
 Address: _____
 Issue: _____



linklike-audio.com
 support@linklike-audio.com

Linklike is a trademark registered in the USA and other countries. All rights reserved.

| | |
|-----------------------------|---------------------------|
| Pause/Play | Press the earbud once |
| Switch to the next song | Press the earbud twice |
| Switch to the previous song | Press the earbud 3 times |
| Adjust the volume | Adjust on your phone |
| Answer incoming call | Press the earbud once |
| Reject incoming call | Press the earbud about 2s |
| Hang up the call | Press the earbud once |

Reset

Reset the earbuds if the earbuds perform abnormally.
Step 1 Switch the earbuds off, and then press and hold the buttons on both earbuds for about 15s simultaneously (Red and blue blinks 2 times and then off).

Step 2 Press and hold the buttons on both earbuds for about 3s to switch on (Red and blue slow blinking).

Specifications

| | |
|------------------|--------------------|
| Product Name | Wireless Headset |
| Model | Classic 8 |
| Wireless Name | Linklike Classic 8 |
| Wireless Version | V5.0 |

| | |
|------------------------------------------------|---------------------|
| Wireless Transmission Distance | 10m (paired device) |
| Charging Case Capacity | 3.7V, 850mAh |
| Charging Case Input | 5V=1.35A |
| Charging Case Output | 5V=1A |
| Charging Case Charging Time | ≈1.5h |
| Recharge Times of the Charging Case to Earbuds | ≈6 times |
| Earbud Capacity | 3.7V, 45mAh |
| Earbud Charging Time | ≈1.5h |
| Working Time of Fully Charged Earbud | ≈5h |
| Standby Time of Fully Charged Earbud | ≈35h |
| Earbud Net Weight | ≈5.5g |
| Working Temperature | 0C-45C |

Warning

- The earbuds may dropout in low battery condition or strong interference (e.g. traffic light, or signal in crossroad or door opening / closing of elevator).
- Do not use corrosive detergent to clean this product.
- Keep the product away from fire or any extremely high temperature such as a cooking stove, to avoid fire hazards or explosion.
- If you do not intend to use this product for a long

period of time, please put the earbuds back into the charging box, and store it in dry environment, and charge the earbuds at least once a month to prolong its life.

- Do not charge below zero degree Celsius. Charging below zero degree Celsius may damage the battery.
- Permanent hearing damage may occur when earbuds are used at high volume levels for long periods of time.
- Do not disassemble, strike, squeeze or put into fire. Once it is bulging, do not continue to use. Do not put in high temperature environment.
- Do not use the product in situations which requires focused attention (e.g. When driving or performing skilled jobs).
- Keep the product, accessories and packaging parts out of reach of children and pets to prevent accidents and choking hazards.



CE RoHS

FCC ID : ZAR3ECLASS8B

The device has been evaluated to meet general RF exposure requirement. The device can be used in portable exposure condition without restriction.

Changes or modifications not expressly approved by the party responsible for compliance could void the user's authority to operate the equipment.

This equipment has been tested and found to comply with the limits for a Class B digital device, pursuant to Part 15 of the FCC Rules. These limits are designed to provide reasonable protection against harmful interference in a residential installation. This equipment generates uses and can radiate radio frequency energy and, if not installed and used in accordance with the instructions, may cause harmful interference to radio communications. However, there is no guarantee that interference will not occur in a particular installation. If this equipment does cause harmful interference to radio or television reception, which can be determined by turning the equipment off and on, the user is encouraged to try to correct the interference by one or more of the following measures:
 -- Reorient or relocate the receiving antenna.
 -- Increase the separation between the equipment and receiver.
 -- Connect the equipment into an outlet on a circuit different from that to which the receiver is connected.
 -- Consult the dealer or an experienced radio/TV technician for help.

This device complies with part 15 of the FCC rules. Operation is subject to the following two conditions: (1) this device may not cause harmful interference, and (2) this device must accept any interference received, including interference that may cause undesired operation.