

# Linklike

## USER MANUAL

### Connection Tutorial



1. Open the settings in your services.
2. Open the bluetooth.
3. Click the "LINKLIKE Free12" to connect.
4. Enable the call and media permissions.

### Check the Battery Level



According to the system, you can check the battery level on the phone's negative one screen or the top bar.

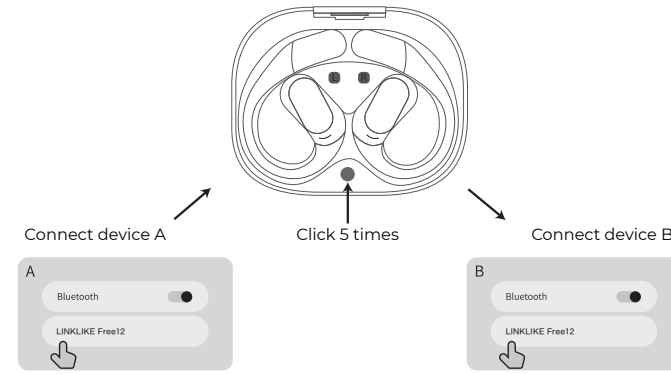
### Volume Synchronization (Important)



- According to different systems, the sync function locations is different. You can find the sync function through the following steps:
1. iOS system: Automatic sync, no need to set up.
  2. Android New system: Settings - Bluetooth - Headphone settings - Turn on volume sync function.
  3. Android Old system: Settings - About phone - Tap on the version number repeatedly (at least 8 times) to enter developer mode - Go back to the settings interface, system and updates - Developer options - Turn on Bluetooth absolute volume - Done (you can exit developer mode in the status bar).

Tip: To better control the volume and enjoy music, it is best to turn on the phone of sync function before use the headphones.

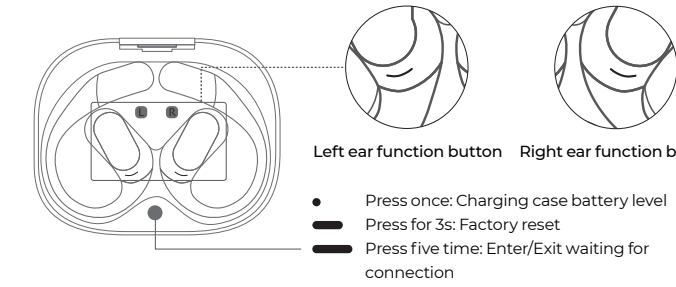
### Two Device Connection Explanation



1. Turn on the earphones - Enable the Bluetooth function on devices A and B - Connect on the device interface; (Quick connection is possible within 20 seconds)
2. Connect to device A - click the reset button 5 times to waiting for connection again and connect to device B.

If two devices are already connected, you will need to disconnect one of them first. (Note: If you cannot reconnect immediately, close and open the bluetooth function again.)

### Reset Button



### Multifunction Button

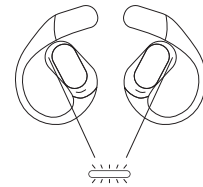
	Left ear function button	Right ear function button
Music Mode	● Click Once: Play/pause music	● Click Once: Play/pause music
	●● Click Twice: Previous song	●● Click Twice: Next song
	▬ Long Press: Volume -	▬ Long press: Volume +
Call Mode	●● Click Twice: Answer call	●● Click Twice: Answer call
	▬ Long Press: Hang up/Reject call	▬ Long press: Hang up/Reject call
Normal Mode (In non-music non-call mode)	▬ Press 3s / 6s: Power on / off	▬ Press 3s / 6s: Power on / off
	●●● Click Thrice: Enter/Exit Game mode	●●● Click Thrice: Turn Voice assistant on/off

LINKLIKE Free12 Model: LNOW1  
Linklike (Shenzhen) Technology Co., Ltd.  
ADD: RM1709, BLK C, Zhantao Technology BLDG, Minzhi Avenue, Minzhi ST, Longhua DIST, Shenzhen, China  
• E-mail: Linklike-Audio@outlook.com  
Linklike is a trademark registered in the USA and other countries. All rights reserved. Made in China

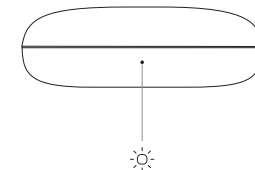


LKPC01010A

### Light Instructions



Function Description	Indicator Light Status
Two earphones pairing each other	White light flashes quickly
Waiting for connection	White light breathes flashing
Connected and power on	White light stays on for 2s
Reset successful	White and red lights alternate flashing for 2s
Power off	Red light stays on for 2s
NTC over-high or over-low temperature protection mode	Red light flashed for 10s
Fully charged	White light stays on for 5s
Low battery reminder	Red light flashes quickly for 2s



Function Description	Indicator Light Status
Power level display	White light: 80% to 100%
	Green light: 50% to 80%
	Orange light: 20% to 50%
Red light: 0% to 20%	
Fully charged	White light stays on for 10s
NTC over-high or over-low temperature protection mode	Red light flashed 10s
Earphone insertion and retrieval	White light flash 2 time

### Important Instructions

1. Do not use corrosive cleaning agents to clean this product.
2. Do not use this product in high temperature or humid environments, and avoid heating, close proximity to a heat source, or placing it in fire to prevent explosions.
3. This product does not have any user-maintainable parts. Do not disassemble or modify it without authorization.
4. If the product is not used for a long time, please store the earphones in the charging case and ensure a dry storage environment. Additionally, charge the charging case at least once a month.
5. Do not charge the product in temperatures below zero, as it may damage the battery.
6. Do not use this product during thunderstorms, as it may cause abnormal headphone operation and increase the risk of electric shock.
7. Adjust the system volume to a moderate level when using this product for an extended period of time, as high volume levels may pose a risk to hearing loss.
8. Do not use this product in situations that require special attention, such as while in traffic or engaging in skilled work.
9. When using a charger for power supply, please purchase or use a charger that has obtained certification and meets the standard requirements.
10. To ensure the normal use of this product, please use a USB-C charging adapter that complies with national standards.
11. Please keep the product accessories and packaging components out of reach of children and pets to prevent accidents and choking hazards.

### Battery Warning

This product contains a built-in lithium battery. Please note the following:

1. Please charge the battery promptly when the power is low. If not used for a long time, please turn on the product every three months until the battery is fully discharged, and then fully charge the battery to prevent battery damage. It is recommended to use and store the product in suitable environmental temperatures.
2. Do not dismantle, impact, squeeze, or throw into fire. If severe swelling occurs, please stop using it. Do not place it in high-temperature environments. If the battery life is significantly reduced, please stop using it and have it repaired by professionals.
3. Improper battery replacement may cause explosion risks. Only use the same type or equivalent type of battery and have it replaced by professionals.
4. The battery (battery pack or combination battery) should not be exposed to sunlight, fire, or similar overheating environments.
5. Products containing lithium batteries should be disposed of separately from household waste. If the product is discarded, the battery should be removed and the positive and negative ends should be insulated before being placed in designated recycling locations or handed over to environmental protection recycling departments. Do not dispose of it casually.
6. Battery dismantling steps: ① Disassemble the product and remove the PCB and battery components. ② Use a screwdriver to unscrew the screws one by one. ③ Separate the battery from the circuit board and casing. Cut off the connection between the battery and the circuit board, and then remove the battery. (Special warning: Do not cut off all the connecting wires between the battery and the circuit board at the same time.)

Changes or modifications not expressly approved by the party responsible for compliance could void the user's authority to operate the equipment.  
This equipment has been tested and found to comply with the limits for a Class B digital device, pursuant to Part 15 of the FCC Rules. These limits are designed to provide reasonable protection against harmful interference in a residential installation. This equipment generates uses and can radiate radio frequency energy and, if not installed and used in accordance with the instructions, may cause harmful interference to radio communications. However, there is no guarantee that interference will not occur in a particular installation. If this equipment does cause harmful interference to radio or television reception, which can be determined by turning the equipment off and on, the user is encouraged to try to correct the interference by one or more of the following measures:  
-- Reorient or relocate the receiving antenna.  
-- Increase the separation between the equipment and receiver.  
-- Connect the equipment into an outlet on a circuit different from that to which the receiver is connected.  
-- Consult the dealer or an experienced radio/TV technician for help  
This device complies with part 15 of the FCC rules. Operation is subject to the following two conditions (1) this device may not cause harmful interference, and (2) this device must accept any interference received, including interference that may cause undesired operation.

FCC RF Radiation Exposure Statement:  
1. This Transmitter must not be co-located or operating in conjunction with any other antenna or transmitter.  
2. This equipment complies with RF radiation exposure limits set forth for an uncontrolled environment.  
This equipment should be installed and operated with minimum distance 5mm between the radiator and your body.

物料编码: LKPC01010A		表面工艺: ①风琴折, ②双面印刷, ③单黑, 满版过哑油④啤	
物料名称: LinkLike Free 12耳挂耳机使用说明书		印刷颜色: K	
结构部分	材质: 银禾样合100克本白双胶纸	单位: mm	LOFFAN DESIGN 洛凡设计
	成型尺寸: 100*100mm 展开尺寸: 400*100mm	刀线: ———	
	结构设计: 黄从峰	压线: - - - - -	
	结构修改:	针刀线: - - - - -	
	日期:	刀线相交: - - - - -	
备注: 特别注意事项	坑纹:	日期: 24.04.29	备注:
特别说明: 所有物料需要符合蓝禾《有害物质限用管理程序》LH-WI-0004 (环保要求)			