

# COFFEESECRET

## Smart Coffee Scale

[ CS-900 Operating Manual ]



**ULTRAKOSKI**

The instructions in this operation manual apply to coffeeseecret smart coffee scale.

Thank you very much for purchasing our smart digital scale.

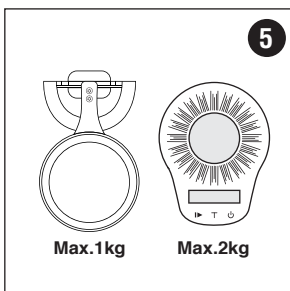
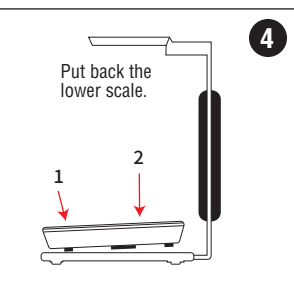
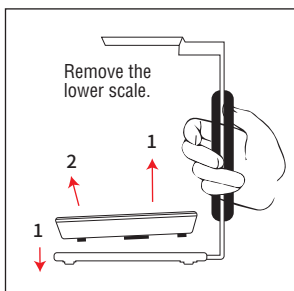
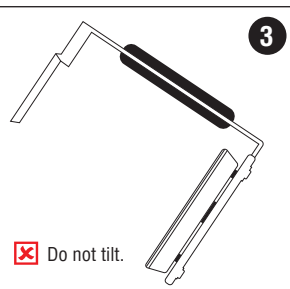
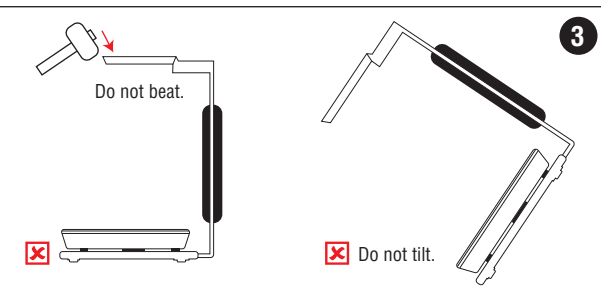
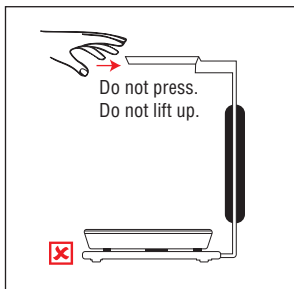
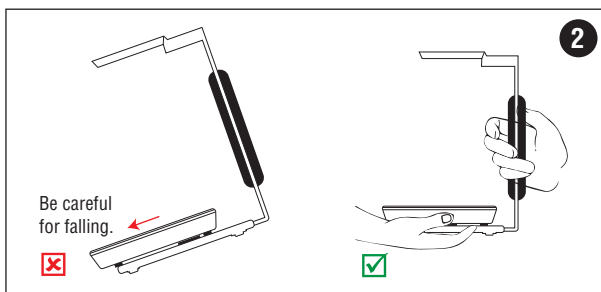
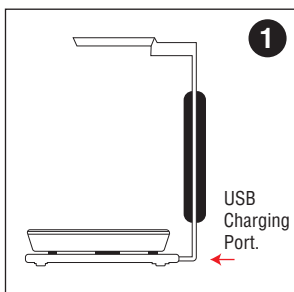
With normal care and proper treatment it will provide years of reliable service.

Please read all the operating instructions carefully before using the product.

# CAUTION

# ULTRAKOKI

1. Due to low battery the new scale isn't turn on. Please charge fully first, then use it.
2. As the smart coffee scale is a precise device, please manipulate with care. When moving, please hold the wooden handle in one hand and hold the weighing scale in the other hand. Please try to avoid shakings or other rough handling caused to damages.
3. The maximum weighing capacity for upper scale ring is 1kg. Please use it not in overloading or not with collision tilt to avoid damages.
4. If you need to remove the lower scale, please grip the wooden handle in one hand and hold the lower scale in the other hand. After gently taking from Position 1, next take from Position 2. As to installing the lower scale, please manipulate in reverse direction, i.e. put it back on Position 2 first and then on Position 1 POGOPIN for connecting.
5. The maximum weighing capacity for upper scale is 1kg. The maximum weighing capacity for lower scale is 2kg. Do not overload.
6. Please do not dismantle any screws to avoid weight inaccuracy, if you are not our maintenance staff.
7. If you need to download app, please visit the web site [www.ultrakoki.com](http://www.ultrakoki.com) or scan the QR code. Any enquires or services after sale, please e-mail to [service@ultrakoki.com](mailto:service@ultrakoki.com).



## Scale Overview

ULTRAKOKI

Coffeeseecret smart coffee scale from Ultrakoki includes following items:

1. a frame of coffee scale
2. a main unit of coffee scale
3. an operation manual
4. a Micro-USB charging cable(1m)

\* CS-900S: 130mm(L) x 195mm (W) x 210mm (H)  
\* Weight:1000g

\* CS-900L: 130mm(L) x 195mm (W) x 260mm (H)  
\* Weight:1200g

\* Capacity for the upper scale: 2.2lbs/1kg

\* Capacity for the lower scale: 4.4lbs/2kg

\* Measuring units: oz, g

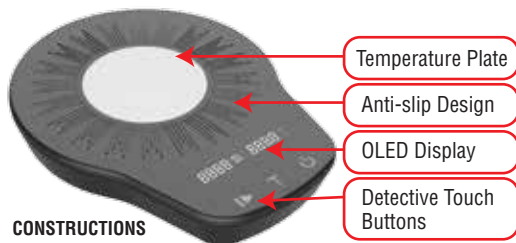
\* Display: OLED

\* Battery & Power: Rechargeable Lithium-ion battery, 3.7V,1000mAh

\* Connectivity: Bluetooth 4.0

\* Colors: Black / White

\* Turn on/ off : Press Key On / Off / Auto-off



### CONSTRUCTIONS OF MAIN UNIT SCALE

### Material & Components:

- \* OLED: glass
- \* Scale plate: PMMA + Stainless steel
- \* Plastic Upper Cover: PMMA
- \* Plastic lower Cover: ABS
- \* Stand: Aerospace aluminum alloy / preservative stainless steel

### Electrical Requirements:

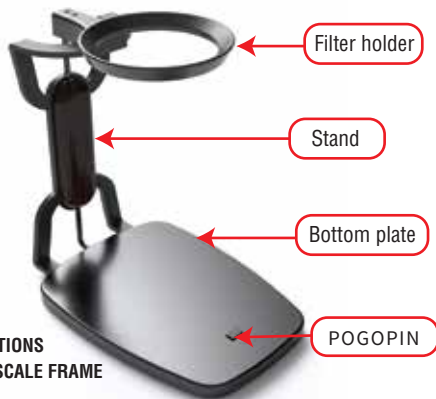
- \* Fixed Voltage: DC3.7V
- \* Battery: High Density Lithium Polymer Battery - Soft Pack
- \* High Stability

### Functions:

- \* Weighing Range for Upper Scale: 0~1000g
- \* Weighing Range for Lower Scale: 0~2000g
- \* Division: 0~200g : 0.1g, 200~500g : 0.5g  
500g~2000g : 1g

### Required Temperature & Humidity:

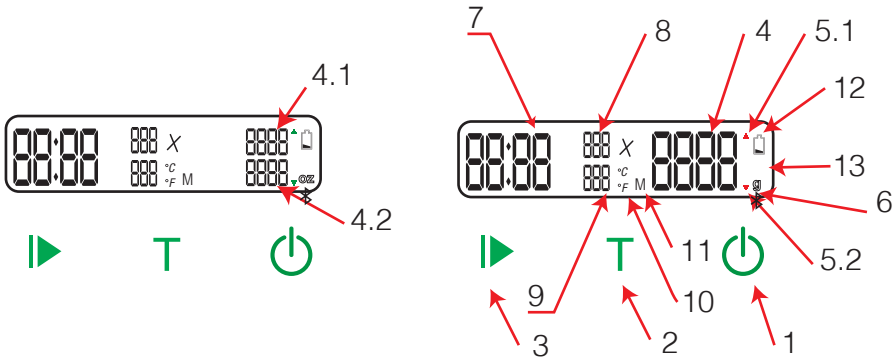
- \* Temperature for Operating: 5-35°C
- \* Humidity for Operating: 30-85 % RH
- \* Temperature for Preservation: 20-60°C
- \* Humidity for Preservation: 0-95 % RH
- \* Lifetime: 3 years



### CONSTRUCTIONS OF UPPER SCALE FRAME

## Functions and Panel illustration

ULTRAKOKI






1. Power Button & Scale Select:
  - First Press to turn on the scale.
  - Press and Hold for 3 seconds to turn off the scale.
  - While brewing, click to switch through 4 different scale modes indicating "Upper Scale", "Lower Scale", "Upper & Lower Scale", "Upper Scale + Lower Scale".
2. Button for Tare Operation(Zero): **Click** to tare depending on different scale modes.
3. Start Button:
  - Click for Learning/Profession modes before Timer mode setting.
  - Click for Start/Pause after Timer mode setting.
  - Press and Hold for 2 seconds to restart the process.
4. Weighing Indicators:
  - 4 via 5.1 shows the weighing of the upper scale.
  - 4 via 5.2 shows the weighing of the lower scale.
  - 4 via 5.1 & 5.2 flashing shows the total weighing of upper and lower scale.
5.
  - 5.1 for the upper scale, 5.2 for the lower scale.
  - Both displays of 5.1 & 5.2 show both weighing or its total weighing value.
6. Weighing Units Indicators:
  - Pre-setting for g.
  - To switch units setting is to be executed via APP.
7. Timer display shows in Timer Mode.
8. Ratio of water and coffee grinds - "Power Off" shows "Zero".
  - Auto-Calculating the ratio figure concerning coffee weight in coffee pot/recorded coffee powder while brewing in Timer mode.
  - Units: Multiple( $\times$ ).
9. Temperature Indicator for coffee drip pot.
10. Temperature Units:
  - Pre-setting for  $^{\circ}\text{C}$ .
  - To switch temperature units setting is to be executed via App.
11. "M" shows memory completion of coffee grinds weight.
12. Battery Indicator: Please charge in low battery. Charging. Full Charge.
13. Bluetooth Indicator:
  - "OLED ON" shows connecting via App.
  - "OLED OFF" shows not connecting via App.

**Click** means less than 1 second button touching.

## Teaching Mode of Hand-Drip-Brewing Coffee

ULTRAKOKI


- Indicating for both weighing of the upper and the lower scale. No switching from Step1 to Step8.
- From Step 9 to Step11, pressing  Power Button can be switched into 4 different modes like "Upper Scale", "Lower Scale", "Upper & Lower Scale", "Upper Scale + Lower Scale".
- From Step1 to Sep7, **clicking**  Start button can be switched into the modes for Professional Hand-Drip-Brewing Coffee or Teaching of Hand-Drip-Brewing Coffee.



Upper Scale	Coffee Dripper & Paper Filter	Upper Scale	Weight
Lower Scale	Coffee-Drip Pot	Lower Scale	Weight

Step 01


Coffee Dripper and Paper Filter for the Upper Scale. Coffee-Drip Pot for the Lower Scale. Auto-Tare after placing both of items.  
If any disabled Zeroing under some factors, please click "T" Button once again for Zeroing.



Weighing roasted coffee beans in Coffee Dripper	Upper Scale	Weight
	Lower Scale	Weight

Step 02


Add your required roasted coffee beans to Coffee Dripper with Paper Filter, once the weight of Upper Scale is detected, then go next step, but the weight display for Upper Scale shows the current figure.



Grinding roasted coffee beans	Upper Scale	Weight
	Lower Scale	Weight

Step 03


Pour roasted coffee beans into Grinder , put the Coffee Dripper with Paper Filter back to the Upper Scale, then enter next step.



Cleaning Paper Filter with hot water	Upper Scale	Weight
	Lower Scale	Weight

Step 04

Pour hot water into Paper Filter, after water dripping, then enter next step.



Wastewater Empty	Upper Scale	Weight
	Lower Scale	Weight

Step 05

Empty the used water from the Coffee-Drip Pot, then enter next step.



<b>Place the Coffee-Drip Pot back</b>	Upper Scale	Weight
	Lower Scale	Weight

**Step 06**

Place the Coffee-Drip Pot back to the Lower Scale, after Auto-Zeroing for Upper and Lower Scale, then enter next step.



<b>Add coffee grinds</b>	Upper Scale	Weight
	Lower Scale	Weight

**Step 07**

If any disabled Zeroing before this step, please click "T" Button once again for Zeroing, then add coffee grinds into the Paper Filter. After stop of adding, enter next step.  
(At the same time, take the Coffee Dripper to adjust Coffee grinds equally, then place it back to the Upper Scale.)



<b>Press "▶" for operation</b>	Upper Scale	Weight
	Lower Scale	Weight

**Step 08**

Click the ▶ Start Button for calculating that records the weight of Coffee Grinds automatically. After Zeroing of the Upper Scale, enter next step.



<b>Start to pour water</b>	Ratio of water and coffee grinds × Temperature°C	Added Weight for the upper and lower scale

**Step 09**

"Start to pour water" flashed displays calculating upon the first water drip, then enter next step.



<b>Drip &amp; Brew Timer</b>	Ratio of water and coffee grinds × Temperature°C	Added Weight for the upper and lower scale

**Step 10**

It indicates Time of Pouring water, Ratio of water and coffee grinds (weight of Coffee-Drip Pot with liquid/weight of recorded coffee grinds), Temperature of Coffee-Drip Pot and Weight of Liquid (The above setting is for the added weight of the upper / lower scale. If you want to switch different scale weighing, you can also press "Power Button" at any time.



<b>Completion for Drip &amp; Brew</b>	Ratio of water and coffee grinds × Temperature°C	Added Weight for the upper and lower scale

**Step 11**

You can stop to pour water, when your requested ratio of water and coffee grinds is attained. There are two methods to complete Drip & Brew, i.e. taking the Coffee Dripper or the Coffee-Drip Pot out. The indicator for "Completion for Drip & Brew" and the indicator for finished time calculating display in turn. The digital data for the Ratio of water/coffee grinds and the added Weight won't be changed while completing.


Press the "▶" and hold for 2 seconds to restart.

## Professional Mode of Hand-Drip-Brewing Coffee

ULTRAKOKI

From Step1 to Sep7, clicking ► "Start Button" can be switched into the learning mode for Hand-Drip-Brewing Coffee or the professional mode of Hand-Drip-Brewing Coffee.


Please enter directly Step 7" Add Coffee Grinds" for the Professional Mode of Hand-Drip-Brewing Coffee.



<b>Add coffee grinds</b>	Upper Scale Lower Scale	Weight Weight
--------------------------	----------------------------	------------------

**Step 07**


If any disabled Zeroing before this step, please click "T" Button once again for Zeroing, then add coffee grinds into the Paper Filter. After stop of adding, enter next step.  
(At the same time, take the Coffee Dripper to adjust Coffee grinds equally, then place it back to the Upper Scale.)



<b>Press ► " Start Button</b>	Upper Scale Lower Scale	Weight Weight
-------------------------------	----------------------------	------------------

**Step 08**


Click the ► Start Button for calculating that records the weight of Coffee Grinds automatically. After Zeroing of the Upper Scale, enter next step.



<b>Start to pour water</b>	Ratio of water and coffee grinds × Temperature °C	Added Weight for the upper and lower scale
----------------------------	--	---

**Step 09**


"Start to pour water" flashed displays calculating upon the first water drip, then enter next step.



<b>Drip &amp; Brew Timer</b>	Ratio of water and coffee grinds × Temperature °C	Added Weight for the upper and lower scale
----------------------------------	--	---

**Step 10**

It indicates Time of Pouring water, Ratio of water and coffee grinds (weight of Coffee-Drip Pot with liquid/weight of recorded coffee grinds), Temperature of Coffee-Drip Pot and Weight of Liquid (The above setting is for the added weight of the upper / lower scale. If you want to switch different scale weighing, you can also press "Power Button" at any time.



<b>Completion for Drip &amp; Brew</b>	Ratio of water and coffee grinds × Temperature °C	Added Weight for the upper and lower scale
---	--	---

**Step 11**

You can stop to pour water, when your requested ratio of water and coffee grinds is attained. There are two methods to complete Drip & Brew, i.e. taking the Coffee Dripper or the Coffee-Drip Pot out. The indicator for "Completion for Drip & Brew" and the indicator for finished time calculating display in turn. The digital data for the Ratio of water/coffee grinds and the added Weight won't be changed while completing.  
**Press the ► and hold for 2 seconds to restart.**

# Warning:

## **FEDERAL COMMUNICATIONS COMMISSION INTERFERENCE STATEMENT**

This equipment has been tested and found to comply with the limits for a Class B digital device, pursuant to part 15 of the FCC Rules. These limits are designed to provide reasonable protection against harmful interference in a residential installation. This equipment generates, uses and can radiate radio frequency energy and, if not installed and used in accordance with the instructions, may cause harmful interference to radio communications. However, there is no guarantee that interference will not occur in a particular installation. If this equipment does cause harmful interference to radio or television reception, which can be determined by turning the equipment off and on, the user is encouraged to try to correct the interference by one or more of the following measures:

- Reorient or relocate the receiving antenna.
- Increase the separation between the equipment and receiver.
- Connect the equipment into an outlet on a circuit different from that to which the receiver is connected.
- Consult the dealer or an experienced radio/ TV technician for help.

### **CAUTION:**

Any changes or modifications not expressly approved by the grantee of this device could void the user's authority to operate the equipment.

This device complies with Part 15 of the FCC Rules. Operation is subject to the following two conditions: (1) this device may not cause harmful interference, and (2) this device must accept any interference received, including interference that may cause undesired operation.

### **RF exposure warning**

The equipment complies with FCC RF exposure limits set forth for an uncontrolled environment.

The equipment must not be co-located or operating in conjunction with any other antenna or transmitter.