

SMD CERAMIC ANTENNA

Data Sheet

CA-2450-31-C

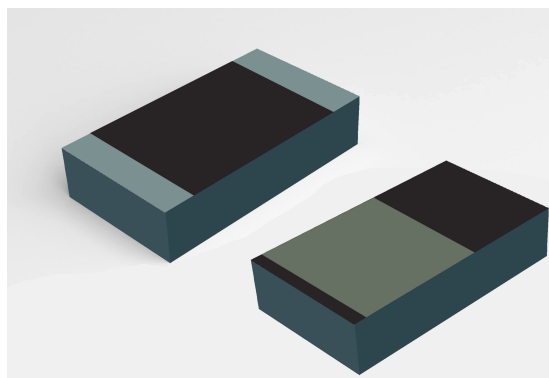
For 2400-2484MHz
3.2x1.6mm [EIA1206]

Shenzhen Kewei New Technology Co., LTD

305, Floor 3, Building C, Chengshanhai Center, No.11
Zhongxing Road, Bantian Street, Longgang District, Shenzhen

特征 Feature

- 重量轻, 结构紧凑
Light weight, compact
- 宽带大, 低成本
Wide bandwidth, low cost
- 高增益内置天线
Built-in antenna with high gain

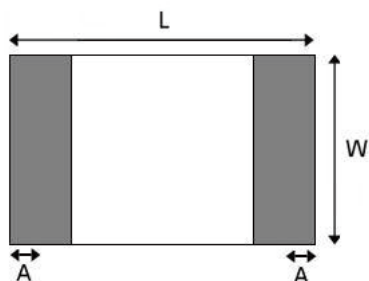


应用 Application

- 蓝牙技术Bluetooth
2.4GHz频段 IEEE802.11g/b
- 齐格比系统
Zigbee systems
- 其它etc...

形状和尺寸(单位: mm)

Shapes And Dimensions Dimensions in mm



L	W	A	H
3.10±0.10	1.55±0.10	0.40±0.20	0.55±0.1

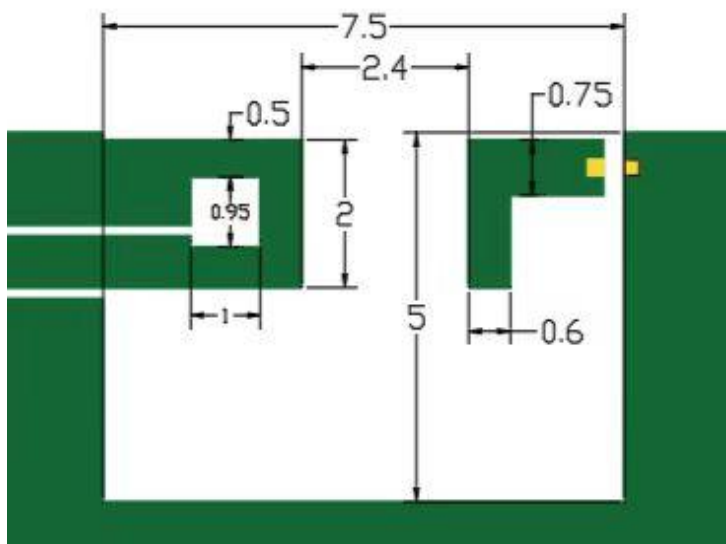


电气特性 Electrical Characteristics per line(TA= 25°C)

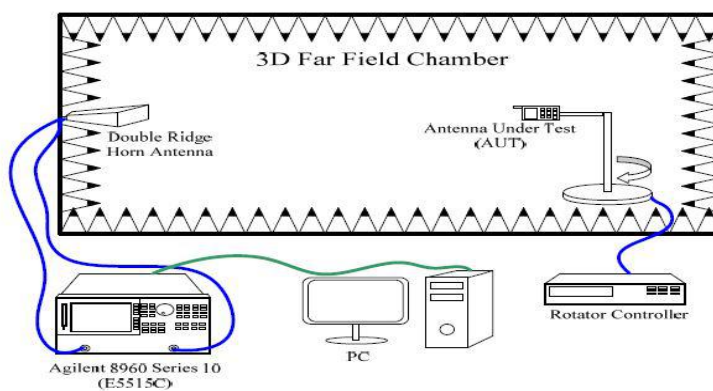
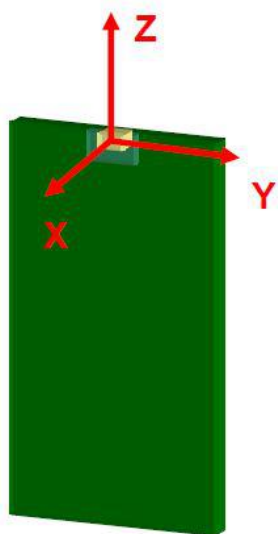
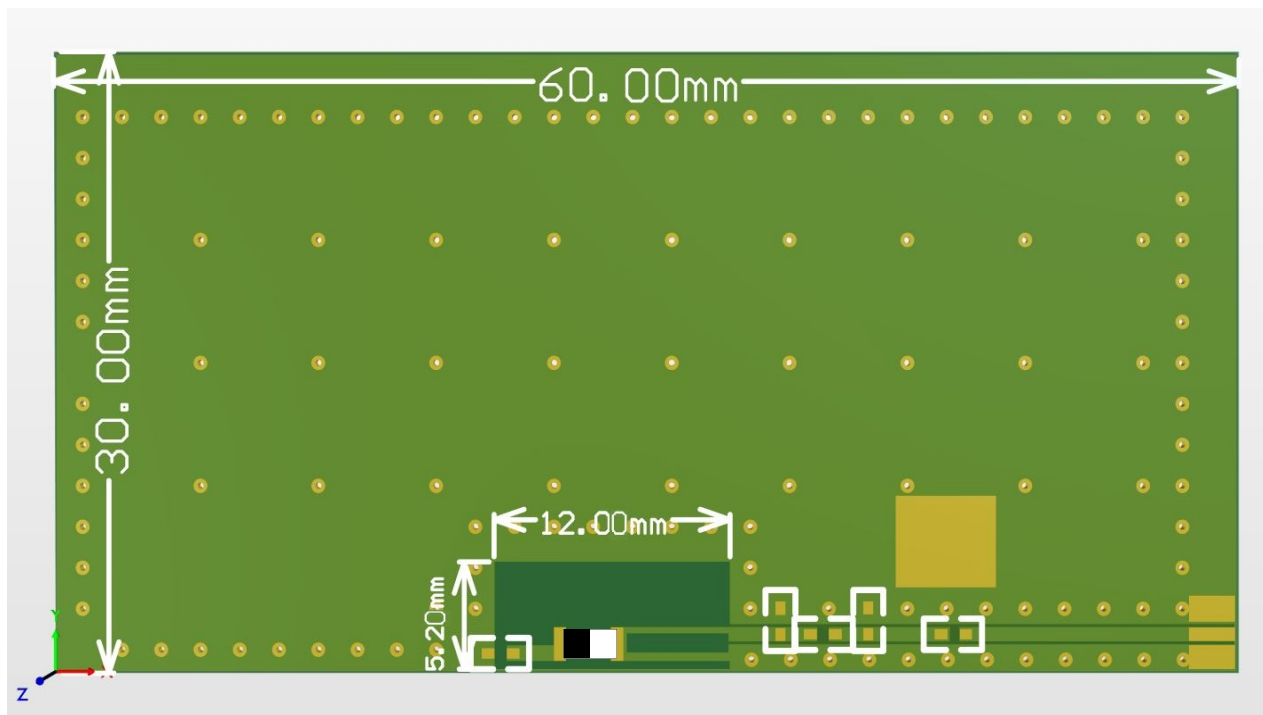
参数Parameter	规格Specification	单位Units
频带 Frequency Band	2400~2483	MHz
极化 Polarization	线极化	
*最大增益 Peak Gain	2.58	dBi
*效率 Efficiency	72.30	%
阻抗 Impedance	50	Ω

■ 编码 Part Numbering System

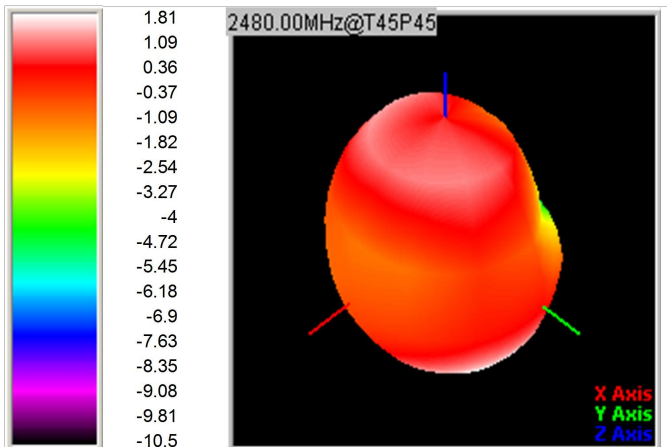
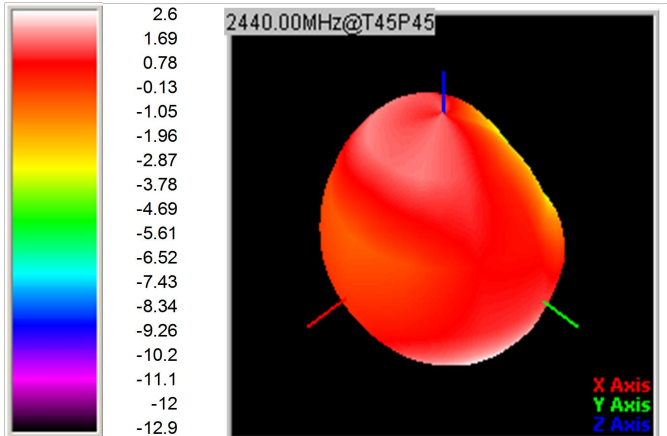
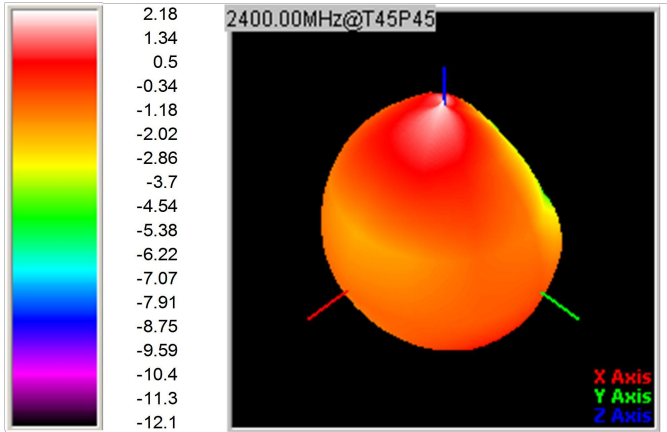
CA - 2450 - 31 - C
 Material Frequency Size Type



■ 评价板 Evaluation Board

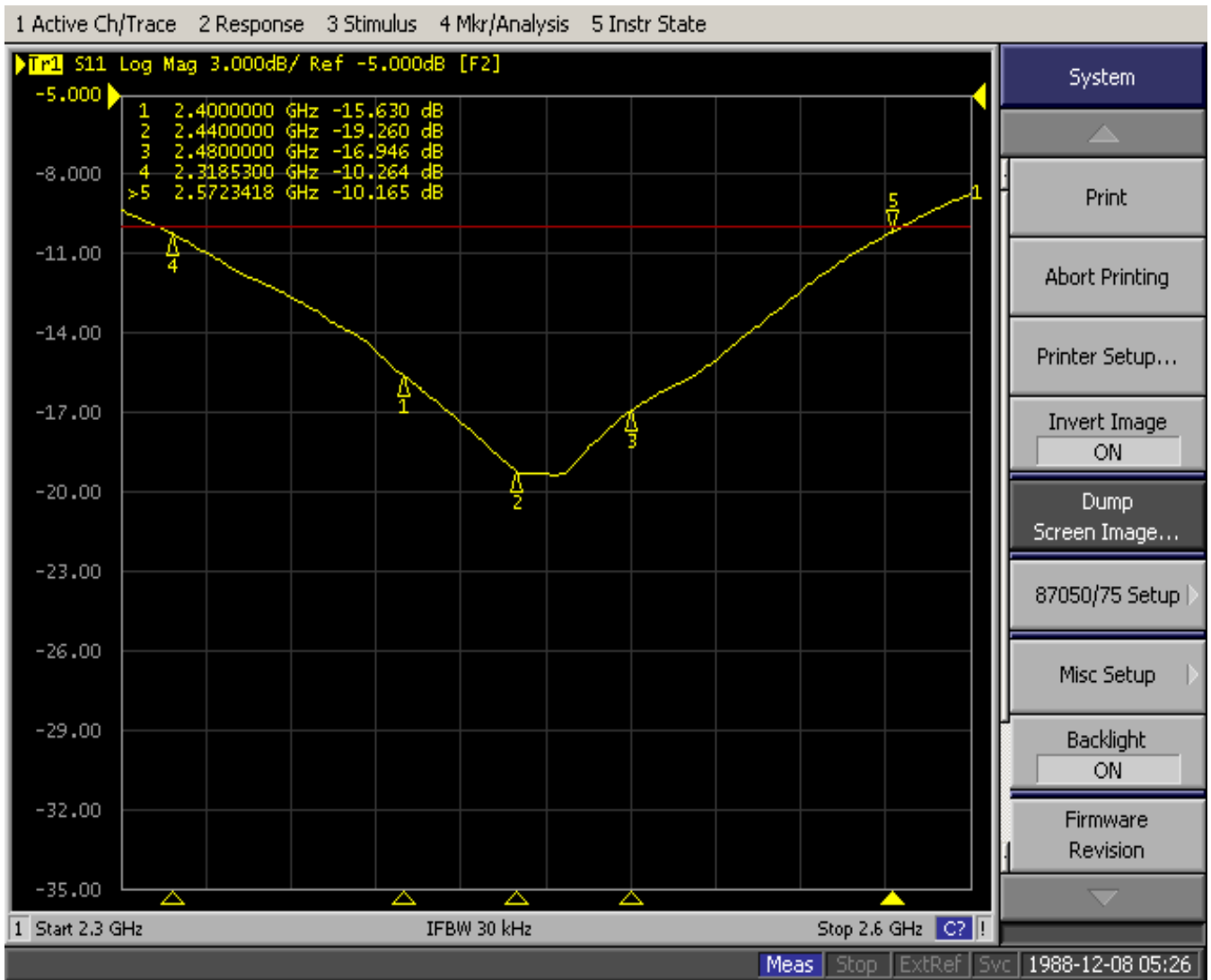


■ 增益&效率 Gain Pattern&Efficiency

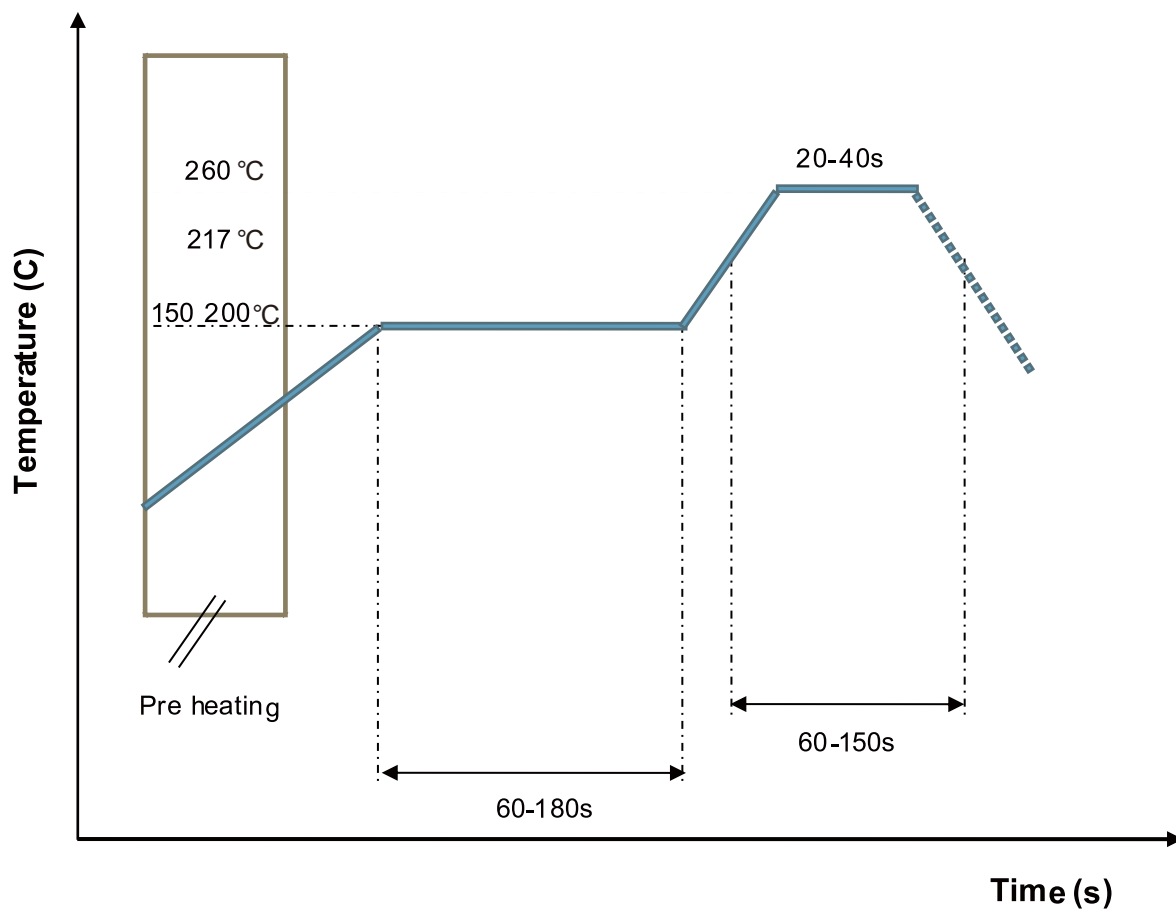


Frequency	Efficiency	Peak Gain
2350	70.32	2.56
2360	71.57	2.53
2370	71.36	2.5
2380	72.43	2.57
2390	72.72	2.51
2400	73.26	2.58
2410	73.34	2.46
2420	72.9	2.41
2430	72.33	2.37
2440	71.84	2.34
2450	70.78	2.39
2460	69.7	2.27
2470	68.95	2.22
2480	68.17	2.19
2490	67.06	2.12
2500	66.7	2.11
2510	66.59	2.1
2520	66.52	2.12
2530	66.13	2.05
2540	65.45	1.98
2550	64.65	1.99

■ 频率特性 FREQUENCY CHARACTERISTICS

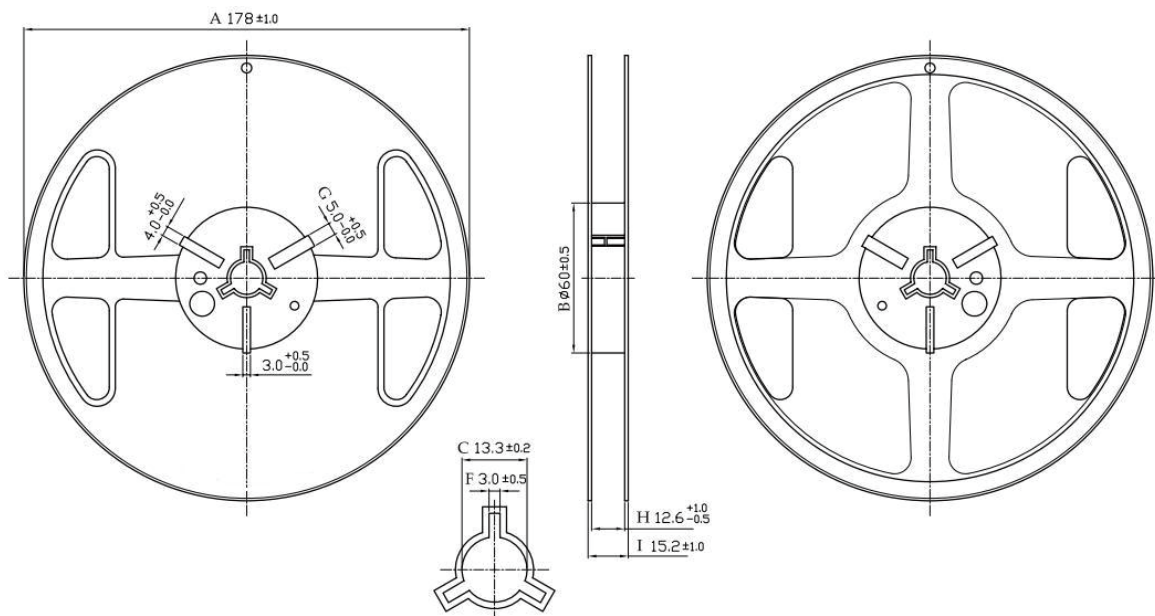


■ 推荐回流剖面
RECOMMENDED REFLOW PROFILE

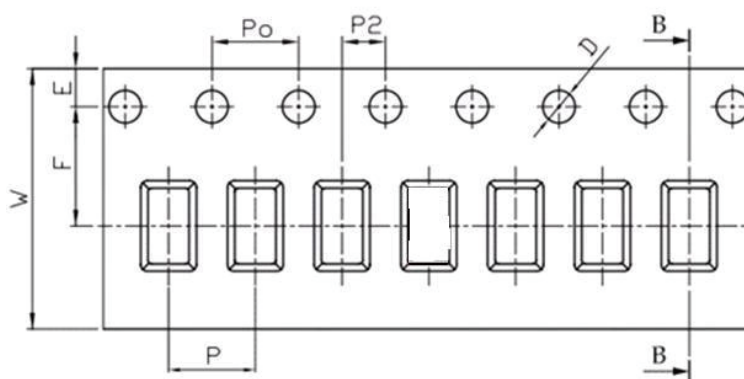


■ 包装形式 Packaging Style

□ REEL DIMENSIONS



□ 胶带尺寸 TAPE DIMENSIONS



Feature	Specifications	Tolerances
W	8.00	±0.30
P	4.00	±0.10
E	1.75	±0.10
F	3.50	±0.10
P ₂	2.00	±0.10
D	1.50	+0.10 -0.00
P ₀	4.00	±0.10
10P ₀	40.00	±0.20

数量Quantity: 5000 pieces per 7 reel