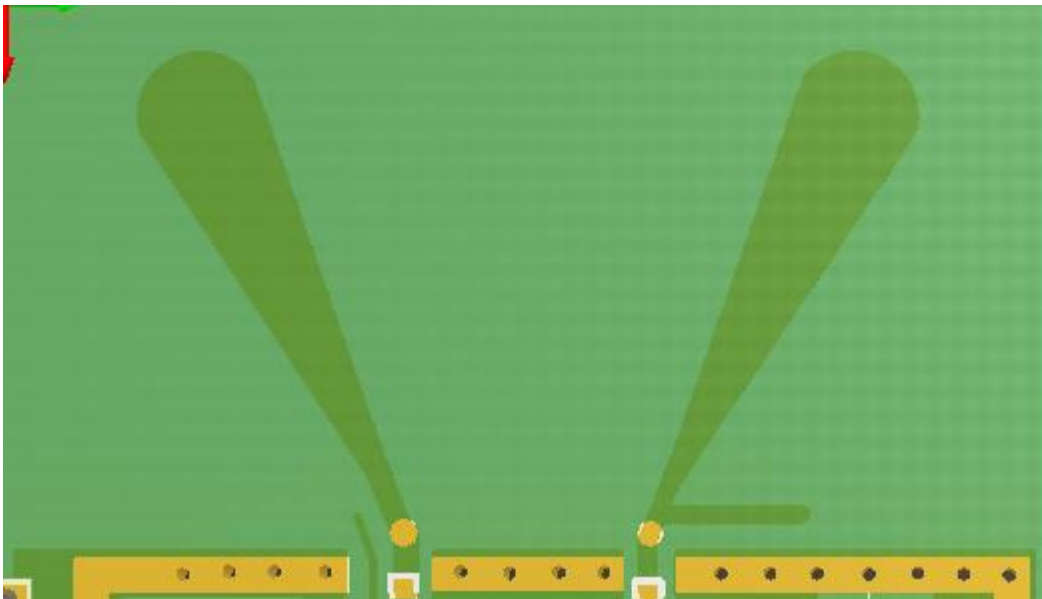


## Product specification

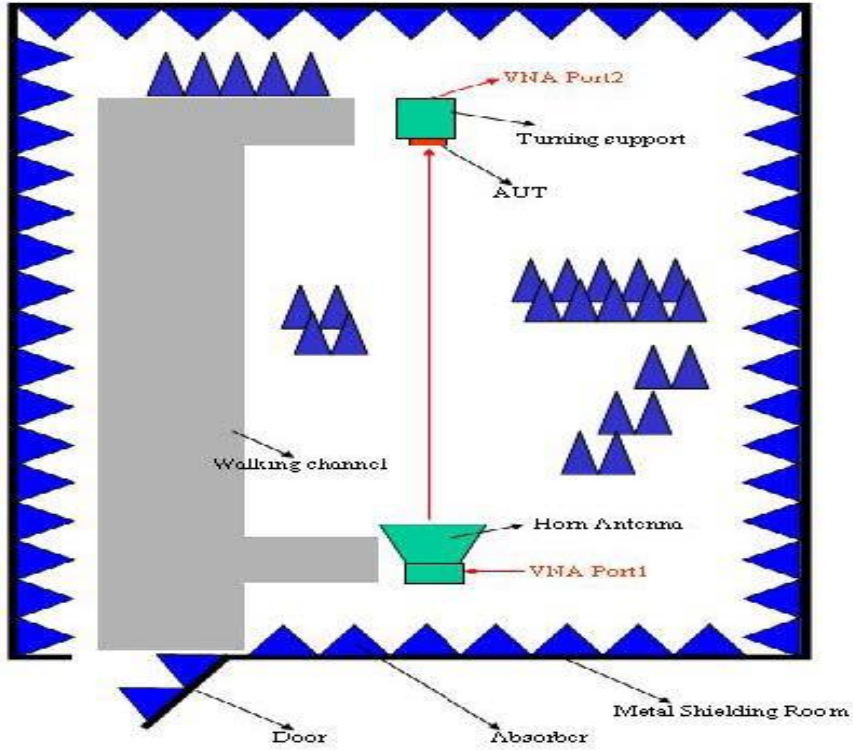
### Quick Reference Date

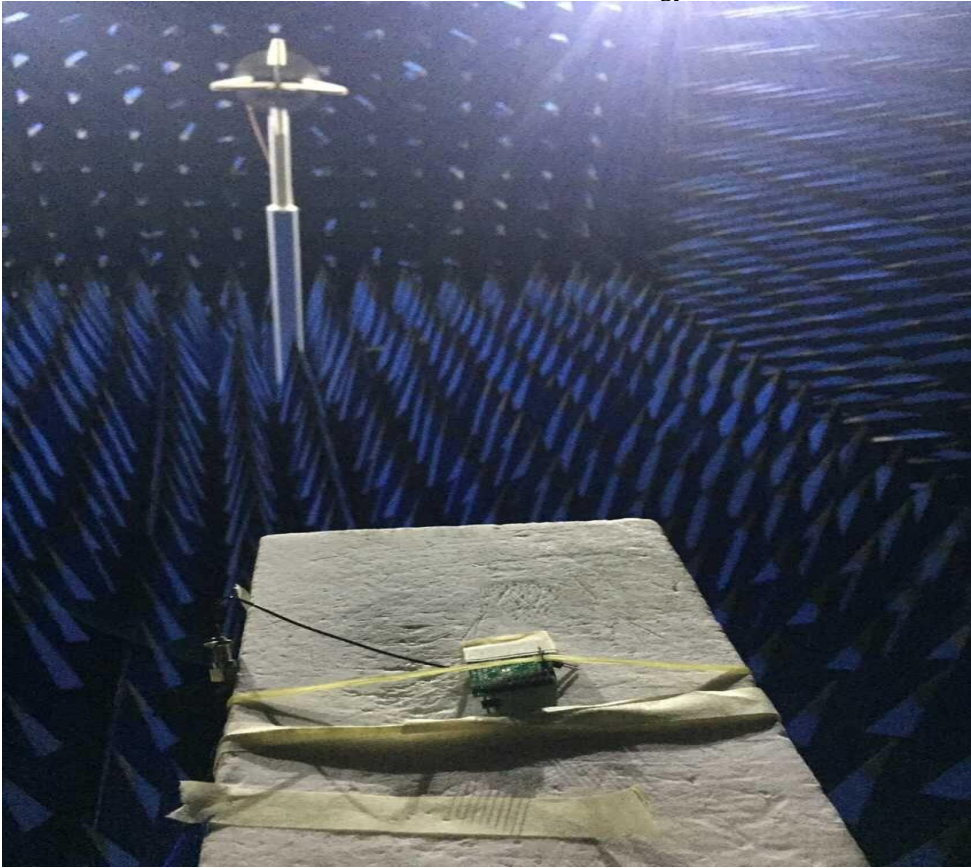
Antenna Layout & module on the system board	
Frequency Range	5729 ~ 5849MHz
Ant. Port Input Pwr. (dBm)	10
Ant. Type	PCB Antenna
Efficiency (dB)	62.67 %
Gain (dBi)	0.5(peakGain XY-plane)
Input Impedence(ohm)	50
Polarization Type	Vertical & Horizontal
VSWR	< 2

### Antenna Layout & module on the system board



## The Environment of Antenna Radiation Pattern





### 3D radiation pattern diagram

