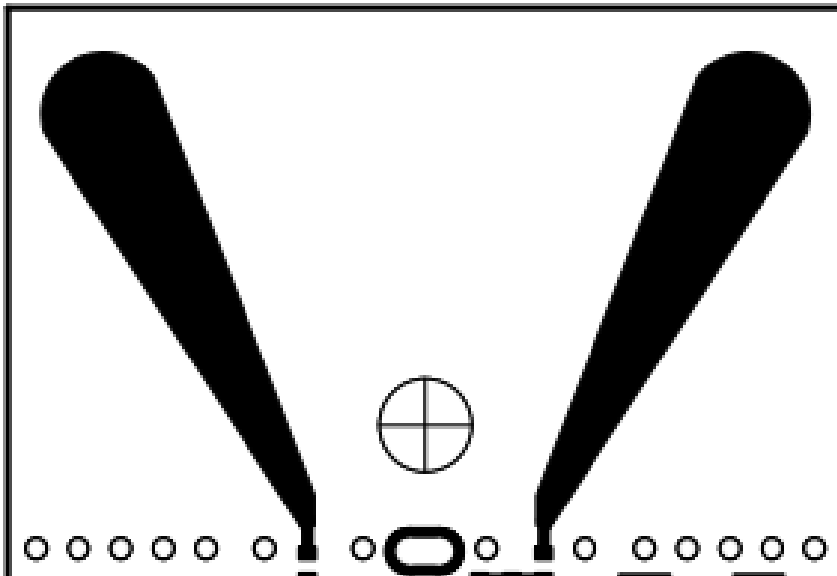


Product specification

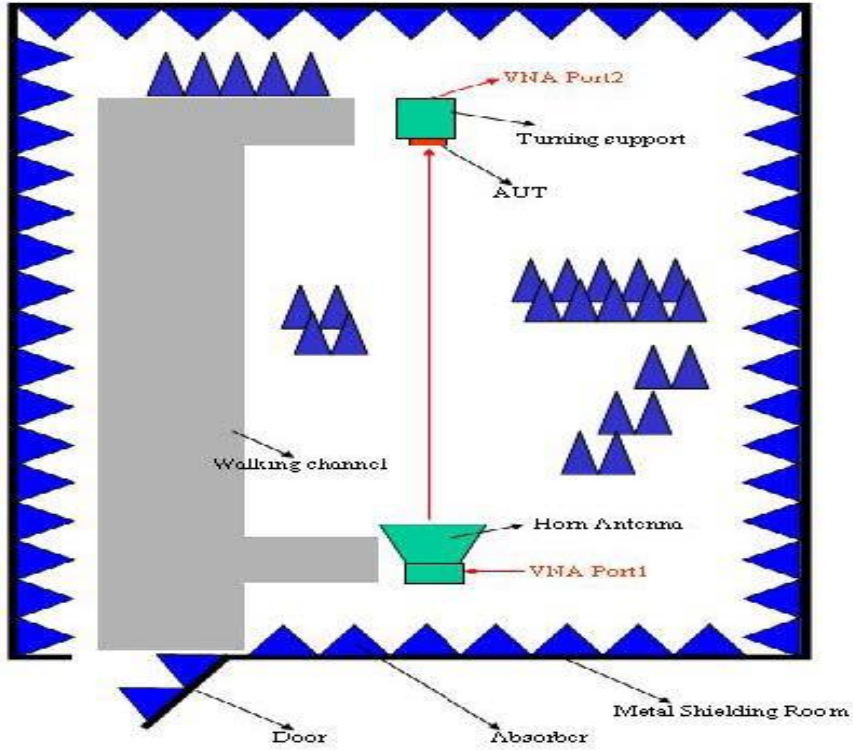
Quick Reference Date

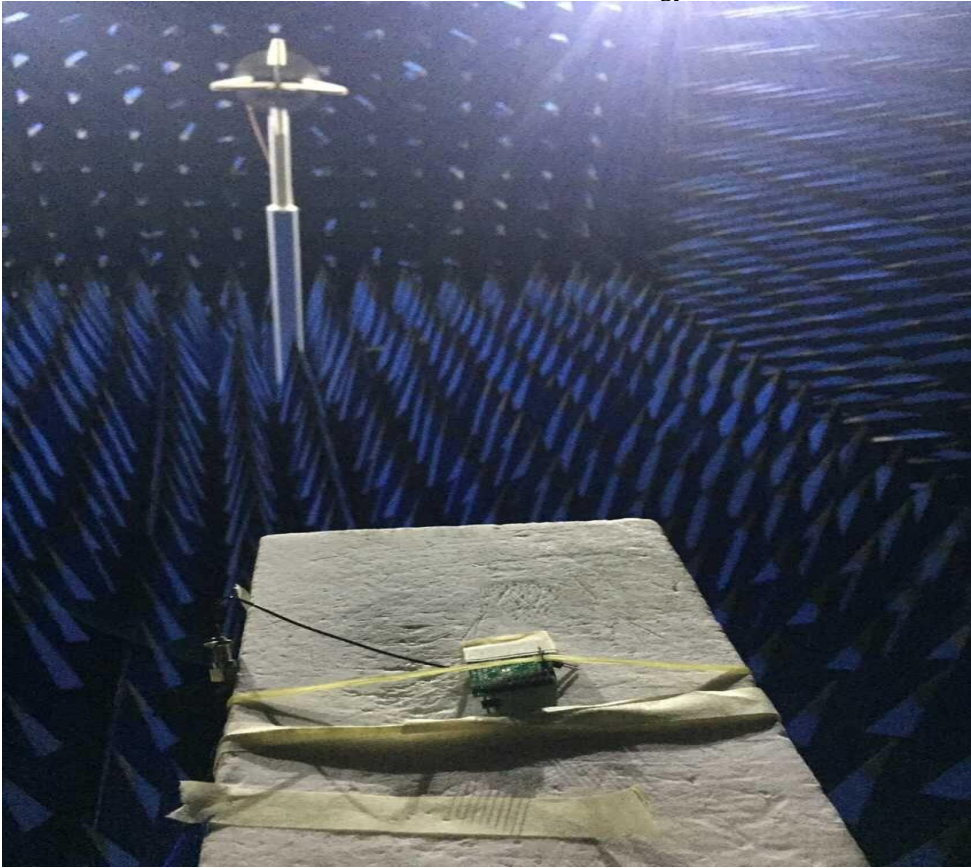
Antenna Layout & module on the system board	
Frequency Range	5729 ~ 5851MHz
Ant. Port Input Pwr. (dBm)	10
Ant. Type	MONO POLE Antenna
Efficiency (dB)	62.67 %
Gain (dBi)	1.55 (peak Gain XY-plane)
Input Impedence(ohm)	50
Polarization Type	Vertical & Horizontal
VSWR	< 2

Antenna Layout & module on the system board

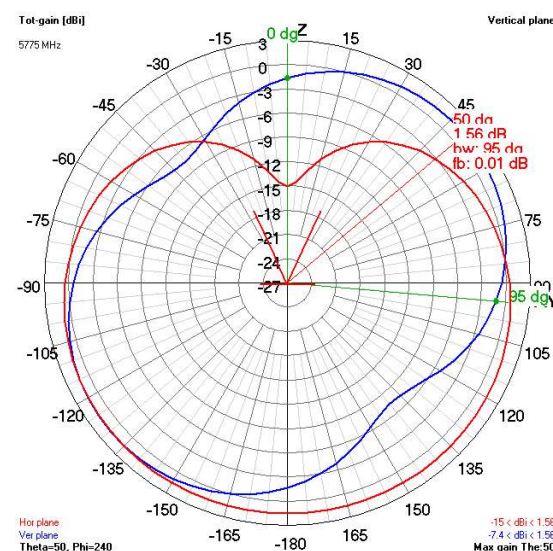
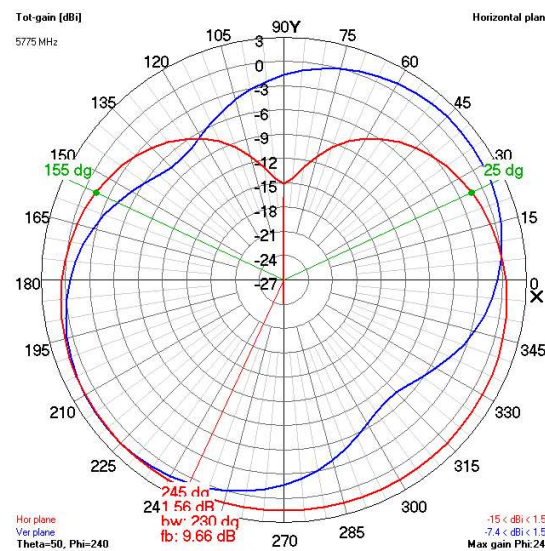
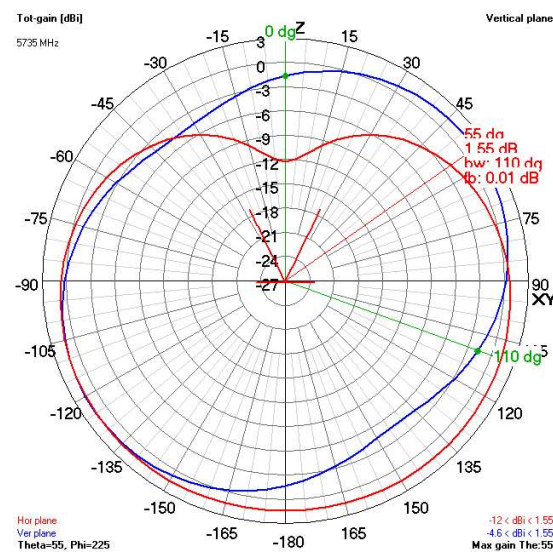
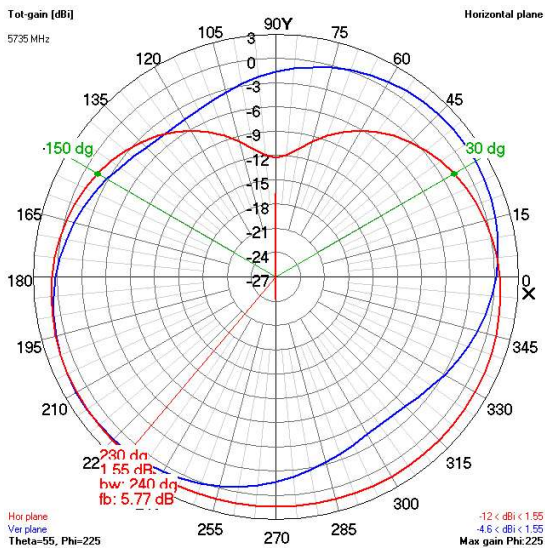
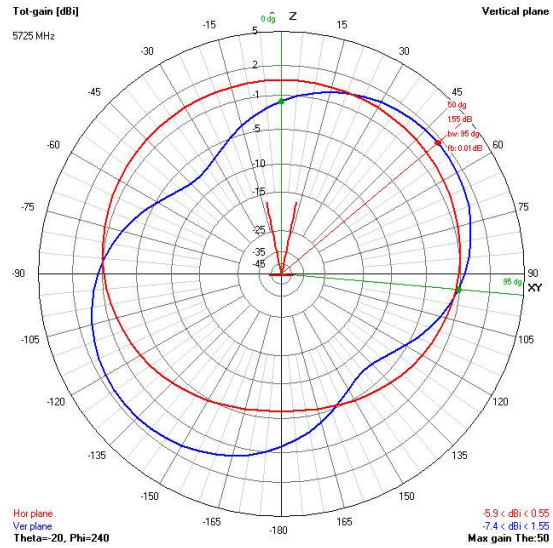
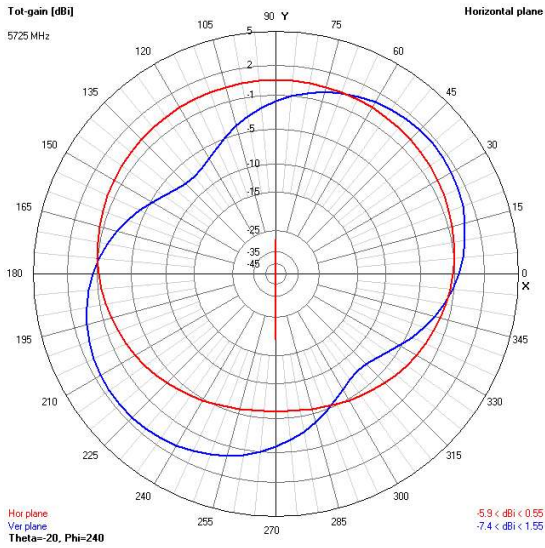


The Environment of Antenna Radiation Pattern





3D radiation pattern diagram



3D radiation pattern diagram

