

# PORSCHE DESIGN

## USER MANUAL

Open-Ear Headphones PDT30

# Contents

---

1	Important safety instructions	2
	Hearing safety	2
	General information	2

---

2	Your Open-ear Headphones	4
	What is in the box	4
	Other devices	4
	Overview of your Open-ear Headphones	5

---

3	Get started	6
	Charge the battery	6
	How to wear	7
	Pair the earpieces with your Bluetooth device for the first time	7
	Single earpiece (Mono mode)	7
	Multi-point connection	8
	Pair the earpieces with another Bluetooth device	8

---

4	Use your earphones	9
	Connect the earphones to your Bluetooth device	9
	Power on/off	9
	Manage your calls and music	9
	Voice Assistant	10
	Earpieces LED indicator status	10
	Charging box LED indicator status	10

---

5	Reset the earphones	11
---	---------------------	----

---

6	Technical data	12
---	----------------	----

---

7	Notice	13
	Declaration of conformity	13
	Disposal of your old product and battery	13
	Remove the integrated battery	13
	Compliance with EMF	14
	Environmental information	14
	Notice of compliance	14

---

8	Trademarks	16
---	------------	----

---

9	Frequently asked questions	17
---	----------------------------	----

# 1 Important safety instructions

## Hearing safety



### Danger

- To avoid hearing damage, limit the time you use earphones at high volume and set the volume to a safe level. The louder the volume, the shorter the safe listening time is.

Be sure to observe the following guidelines when using your earpieces:

- Listen at reasonable volumes for reasonable periods of time.
- Be careful not to adjust the volume continuously upwards as your hearing adapts.
- Do not turn up the volume so high that you cannot hear what is around you.
- You should use caution or temporarily discontinue use in potentially hazardous situations.
- Excessive sound pressure from earphones can cause hearing loss.
- Using earphones with both ears covered while driving is not recommended and may be illegal in some areas.
- For your safety, avoid distractions from music or phone calls while in traffic or other potentially dangerous environments.

## General information

To avoid damage or malfunction:



### Caution

- Do not expose headphones to excessive heat.
- Do not drop your headphones.
- Headphones shall not be exposed to dripping or splashing. (Refer to the IP rating of specific product)
- Do not allow your headphones to be submerged in water.
- Do not charge your headphones when the connector or socket is wet.
- Do not use any cleaning agents containing alcohol, ammonia, benzene, or abrasives.
- Use a clean, damp cloth to clean your headphones - especially the sound conduits and the microphone holes - regularly and avoid buildup of substances such as sweat or earwax.
- If any sweat or water droplets are left in the sound conduits, air holes or microphone holes, the sound level will temporarily drop or cut out entirely. This is not a malfunction. Use a soft, damp cloth to dry the headphones thoroughly. Alternatively, remove the earbud tips, turn the sound conduits downward and gently tap the headphones about five times on a dry cloth or similar to remove any water collected inside.
- Be sure the headphones are completely dry before charging and using. Avoid using disposable alcohol pads or other substances for cleaning.
- The integrated battery shall not be exposed to excessive heat such as sunshine, fire or the like.
- Danger of explosion if battery is incorrectly replaced. Replace only with the same or equivalent type.
- To achieve the specific IP rating, the charging slot lid must be closed.
- Disposal of a battery into fire or a hot oven, or mechanically crushing or cutting a battery, can result in an explosion.
- Leaving a battery in an extremely high temperature surrounding environment can result in an explosion or the leakage of flammable liquid or gas.
- A battery subjected to extremely low air pressure may result in an explosion or the leakage of flammable liquid or gas.
- Replacement of a battery with an incorrect type risks severely damaging the headphones and the battery (for example, in the case of some lithium battery types).
- If the headset is not used for a long time, the rechargeable battery will begin to lose its charge. To avoid this loss, please fully charge the battery at least once every three months.
- To avoid risk of fire, the equipment is supplied only by external power source which output shall comply with PS1 (with output capacity less than 15W).

- Always keep all new and used batteries out of reach of children.
- Packaging materials are not a toy. Keep all packaging materials out of the reach of children. Suffocation hazard!
- Always keep children and pets away from the product.

#### Operating and storage temperatures and humidity:

- Store in a place where the temperature is between -20°C (-4°F) and 50°C (122 °F) with up to 90% relative humidity.
- Operate in a place where the temperature is between 0°C (32°F) and 45°C (113 °F) with up to 90% relative humidity.
- Battery life may be shorter in high or low temperature conditions.
- Replacement of a battery with an incorrect type risks severely damaging the earphones and the battery (for example, in the case of some lithium battery types).

## 2 Your Open-ear Headphones

Congratulations on your purchase, and welcome to Porsche Design! With these open ear true wireless headphones you can:

- Enjoy convenient wireless handsfree calls.
- Enjoy and control music wirelessly.
- Switch between calls and music.



Quick start guide



Global warranty



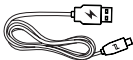
Safety leaflet

---

### What is in the box



Porsche Design Open-Ear Headphones PDT30



USB-C charging cable (for charging only)



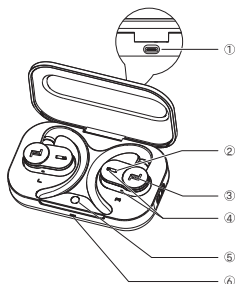
Lanyard

---

### Other devices

Requires a mobile phone or device (e.g. notebook, tablet, Bluetooth adapters, MP3 players, etc) which supports Bluetooth and is compatible with the earphones (see 'Technical data' on page 12).

## Overview of your Open-ear Headphones



- 1 USB-C charging slot
- 2 LED indicator (L/R earpiece)
- 3 Multi-function touch (L/R earpiece)
- 4 Microphone (L/R earpiece)
- 5 Bluetooth pair button
- 6 LED indicator (charging box)

## 3 Get started

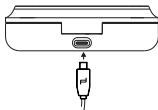
### Charge the battery

#### Note

- Before you use your headphones, place them in the charging box and charge the battery for 2 hours for optimum battery capacity and lifetime.
- Use only the original USB-C charging cable to avoid any damage.
- Finish your call before charging. Connecting the earpieces to charge will power them off.
- If the headset is not used for a long time, the rechargeable battery will begin to lose its charge. To avoid this loss, please fully charge the battery at least once every three months.

### Charging box

Plug one end of the USB-C cable into the charging box and the other end into the power source.



#### Tip

- The charging box serves as a portable backup battery for charging the earpieces. When the charging box is fully charged, it will fully recharge the earpieces three times.

### Earpieces

Place the earpieces in the charging box and close the lid.

- The earpieces start charging.
- The earpieces start charging and the blue LED light goes on.
  - When the earpieces are fully charged, the blue light will go off.



#### Tip

- Normally, a full charge takes 2.5 hours (for the earpieces or charging box) by USB cable.

---

## How to wear

A tight, secure fit will provide the best sound quality.

- 1 Check left or right orientation of the earpieces.
- 2 Twist earpieces slightly until a secure fit is achieved.



---

## Pair the earpieces with your Bluetooth device for the first time

- 1 Make sure the earpieces are fully charged and powered on.
- 2 Open the lid of the charging box, the earpieces will be in pairing mode and ready to connect.
  - ↳ The LEDs on both earpieces flash white LED.
  - ↳ The earpieces are now in pairing mode and are ready to pair with a Bluetooth device (e.g. a mobile phone).

- 3 Turn on the Bluetooth function of your Bluetooth device.
- 4 Pair the earpieces with your Bluetooth device. Refer to the user manual of your Bluetooth device.



### Note

- After powering on, if the earpieces cannot find any previously connected Bluetooth device, they will automatically switch to pairing mode.

The following example shows you how to pair the earpieces with your Bluetooth device.

- 1 Turn on the Bluetooth function of your Bluetooth device, select Porsche Design PDT30.
- 2 Enter the earpieces' password "0000" (four zeros) if prompted. For those devices featuring Bluetooth 3.0 or higher, there is no need to enter a password.



Porsche Design PDT30

---

## Single earpiece (Mono mode)

Take either right or left earpiece out from charging box for mono use. The earpiece will power on automatically. You will hear a voice from the earpieces saying "Power on".



### Note

- Take the second earpiece from the charging box and they will pair with each other automatically.



## Multi-point connection

### Pairing

- Pairing the headphones to 2 devices, e.g. mobile phone and notebook.

### Switch between device

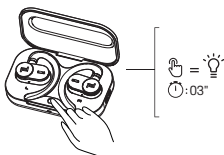
- At anytime, you can only listen to music from 1 device. Another device will be for phone call.
- Pause the audio from 1 device and then start play audio from the another device.

#### Note

- When streaming audio from Device 1, receiving a call from Device 2 will automatically pause Device 1 playback. And the call will be routed automatically to headphones.
- Ending the call will automatically resume playback from device 1.

## Pair the earpieces with another Bluetooth device

If you want to pair another Bluetooth device with the earpieces, make sure the Bluetooth function on any other previously paired device is turned off. Place earpieces on your ears, then press and hold the buttons on both earpieces for three seconds. Release when 'Pairing' voice prompt is heard.



#### Note

- The earpieces store four devices in the memory. If you try to pair more than four devices, the earliest paired device is replaced by the new one.

## 4 Use your earphones

### Connect the earpieces to your Bluetooth device

- 1 Turn on the Bluetooth function of your Bluetooth device.
- 2 Open the charging box lid.
  - ↳ The blue LED flashes.
  - ↳ The earpieces will search the last connected Bluetooth device and reconnect to it automatically. If the last connected device is not available, the earpieces will enter pairing mode.



#### Tip

- If you turn on the Bluetooth function of your Bluetooth device after turning on the earpieces, you have to go to the Bluetooth menu of the device and connect the earpieces to the device manually.



#### Note

- If the earpieces fail to connect to any Bluetooth device within 3 minutes, it will turn off automatically to save the battery life.
- In some Bluetooth devices, connection may not be automatic. In this case, you have to go to the Bluetooth menu of your device and connect the earpieces to the Bluetooth device manually.
- If no signal (music/call) is received for 60 mins even with Bluetooth connection, the earpieces will turn off automatically to save the battery life.

### Power on/off

Task	Multi-function button	Operation
Turn the earpieces on		Open the lid to power on
Turn the earpieces off		Put earpieces back into the charging box and close the lid

### Manage your calls and music

#### Music control

Task	Multi-function button	Operation
Play or pause music	Right earpiece	Double tap
Next track	Right earpiece	Triple tap
Previous track	Left earpiece	Triple tap
Adjust volume +	Right earpiece	Tap once and hold
Adjust volume -	Left earpiece	Tap once and hold

## Call control

Task	Multi-function button	Operation
Pick up / Hold call	Right earpiece	Double tap
Reject call / Hang up call	Right earpiece	Tap and hold one second

## Voice Assistant

Task	Multi-function button	Operation
Trigger Voice (Siri/Google) Assistant	Right earpiece	Tap and hold two seconds
Stop Voice Assistant	Right earpiece	Single tap

## Earpieces LED indicator status

Earphones status	Indicator
The earpieces are connected to a Bluetooth device	White LED blinks every five seconds
The earpieces are ready for pairing	The LED flashes blue and white alternately
The earpieces are on but not connected to a Bluetooth device	White LED blinks every second (auto turn off after three minutes)
Low battery level (earpieces)	Blue LED blinks twice every five seconds
Battery is fully charged (charging box)	Refer to case LED

## Charging box LED indicator status

When charging	Indicator
Battery low	Amber LED lights up
Relative adequate battery	White LED lights up

In use and lid is open	Indicator
Battery low	Amber slowly blinks for 4 cycles
Relative adequate battery	Off

## 5 Reset the earpieces

If you encounter any pairing or connection issue, you can follow the procedures below to reset your earpieces.

- 1 On your Bluetooth device, go to the Bluetooth menu and remove **Porsche Design PDT30** from the device list.
- 2 Turn off the Bluetooth function of your Bluetooth device.
- 3 Return earpieces to charging box and open the lid.
- 4 Press button on box twice.
- 5 Follow steps in 'Use your earpieces-Connect the earpieces to your Bluetooth device.'
- 6 Pair the earpieces with your Bluetooth device, select **Porsche Design PDT30**.

If there is no response from the earpieces, you can follow the below step to reset the hardware of your earpieces.

- Tap and hold multi-function touch for ten seconds.

## 6 Technical data

- Music play time: 6 + 15 hours
- Standby time: 200 hours
- Charging time: 2.5 hours
- Lithium-ion battery 70 mAh on each earpiece, Lithium-ion battery 650 mAh on charging box
- Bluetooth version: 5.3
- Compatible Bluetooth profiles:
  - HFP (Hands-free profile)
  - A2DP (Advanced audio distribution profile)
  - AVRCP (Audio video remote control profile)
- Supported audio codecs: SBC
- Frequency range: 2.402-2.480 GHz
- Transmitter power: < 10 dBm
- Operation frequency: 110-205kHz
- Max. H-field strength: 11.3 dBuA/m (62.8 dBuV/m)
- Operating range: Up to 10 meters (33 feet)
- Auto power off
- USB-C port for charging
- Low battery warning: available



### Note

- Specifications are subject to change without notice.

## 7 Notice

### Declaration of conformity

Hereby, MMD Hong Kong Holding Limited declares that this product is in compliance with the essential requirements and other relevant provisions of Directive 2014/53/EU as well as UK Radio Equipment Regulations SI 2017 No. 1206. You can find the Declaration of Conformity on [www.porsche-design.com](http://www.porsche-design.com).

### Disposal of your old product and battery



Your product is designed and manufactured with high quality materials and components which can be recycled and reused.



This symbol on a product means that the product is covered by European Directive 2012/19/EU.

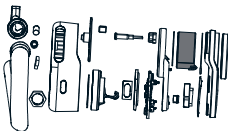


This symbol means that the product contains a built-in rechargeable battery covered by European Directive 2013/56/EU which cannot be disposed of with normal household waste. We strongly advise you to take your product to an official collection point or a Porsche Design service centre to have a professional remove the rechargeable battery. Inform yourself about the local separate collection system for electrical and electronic products and rechargeable batteries. Follow local rules and never dispose of the product and rechargeable batteries with normal household waste. Correct disposal of old products and rechargeable batteries helps prevent negative consequences for the environment and human health.

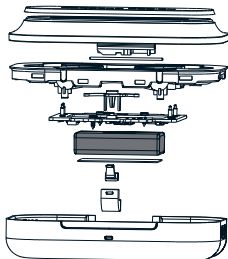
### Remove the integrated battery

If there is no collection/recycling system for electronic products in your country, you can protect the environment by removing and recycling the battery before disposing of the earphones.

- Make sure the earpieces are disconnected from the charging box before removing the battery.



- Make sure the charging box is disconnected from the USB charging cable before removing the battery.



---

## Compliance with EMF

This product complies with all applicable standards and regulations regarding exposure to electromagnetic fields.

---

## Environmental information

Your system consists of materials which can be recycled and reused if disassembled by a specialized company. Please observe the local regulations regarding the disposal of packaging materials, exhausted batteries and old equipment.

---

## Notice of compliance

The device complies with the FCC rules, Part 15. Operation is subject to the following two conditions:

1. This device may not cause harmful interference, and
2. This device must accept any interference received, including interference that may cause undesired operation.

### FCC rules

This equipment has been tested and found to comply with the limits for a Class B digital device, pursuant to part 15 of the FCC Rules. These limits are designed to provide reasonable protection against harmful interference in a residential installation. This equipment generates, uses and can radiate radio frequency energy and, if not installed and used in accordance with the instruction manual, may cause harmful interference to radio communications.

However, there is no guarantee that interference will not occur in a particular installation. If this equipment does cause harmful interference to radio or television reception, which can be determined by turning the equipment off and on, the user is encouraged to try to correct the interference by one or more of the following measures:

- Reorient or relocate the receiving antenna.
- Increase the separation between equipment and receiver
- Connect the equipment to an outlet on a circuit different to that to which the receiver is connected.
- Consult the dealer or an experienced radio/TV technician for help.

### FCC Radiation Exposure Statement:

This equipment complies with FCC radiation exposure limits set forth for an uncontrolled environment.

This transmitter must not be co-located or operated in conjunction with any other antenna or transmitter.

Caution: The user is cautioned that changes or modifications not expressly approved by the party responsible for compliance could void the user's authority to operate the equipment.

### Canada:

This device contains license-exempt transmitter(s)/receiver(s) that comply with Innovation, Science and Economic Development Canada's license-exempt RSS(s). Operation is subject to the following two conditions:

- (1) This device may not cause interference.
- (2) This device must accept any interference, including interference that may cause undesired operation of the device.

#### IC Radiation Exposure Statement:

This equipment complies with Canada radiation exposure limits set forth for uncontrolled environments.

This transmitter must not be co-located or operated in conjunction with any other antenna or transmitter.

BC

#### Avis de conformité

Cet appareil satisfait aux règlements de la FCC partie 15 du Code of Federal Regulations. Son fonctionnement est assujéti aux deux conditions suivantes :

1. Cet appareil ne doit pas causer d'interférence préjudiciable et
2. L'appareil doit accepter toute interférence reçue, y compris les interférences qui peuvent causer un fonctionnement non désiré.

#### Règlement de la FCC

Cet équipement a été testé et jugé compatible avec les limites s'appliquant aux appareils numériques de la classe B, conformément à l'article 15 du règlement de la FCC. Ces limites ont été définies pour fournir une protection raisonnable contre les interférences nuisibles dans le cadre d'une installation résidentielle. Cet équipement génère, utilise et peut émettre de l'énergie radiofréquence et, s'il n'est pas installé ni utilisé conformément aux instructions, peut causer des interférences gênantes pour les communications radio.

Rien ne garantit toutefois que des interférences ne surviendront pas dans une installation particulière. Si cet équipement cause des interférences nuisibles pour la réception de la radio ou de la télévision, ce qui peut être déterminé en mettant l'équipement hors tension puis sous tension, l'utilisateur devra essayer de corriger ces interférences en effectuant une ou plusieurs des opérations suivantes :

Déplacez l'antenne de réception.

Augmentez la distance entre l'équipement et le récepteur.

Branchez l'équipement à une prise d'un circuit autre que celui sur lequel le récepteur est branché.

Consultez le détaillant ou un technicien de radiotélévision expérimenté.

#### Canada:

L'émetteur/récepteur exempt de licence contenu dans le présent appareil est conforme aux CNR d'Innovation, Sciences et Développement économique Canada applicables aux appareils radio exempts de licence. L'exploitation est autorisée aux deux conditions suivantes :

1. L'appareil ne doit pas produire de brouillage;
2. L'appareil doit accepter tout brouillage radioélectrique subi, même si le brouillage est susceptible d'en compromettre le fonctionnement.

#### CAN ICES-003(B)/NMB-003(B)

#### Déclaration d'IC sur l'exposition aux radiations:

Cet équipement est conforme aux limites d'exposition aux radiations définies par le Canada pour des environnements non contrôlés.

Cet émetteur ne doit pas être installé au même endroit ni utilisé avec une autre antenne ou un autre émetteur.

BC



# 8 Trademarks

---

## Bluetooth

The Bluetooth® word mark and logos are registered trademarks owned by Bluetooth SIG, Inc. and any use of such marks by MMD Hong Kong Holding Limited is under license. Other trademarks and trade names are those of their respective owners.

---

## Siri

Siri is a trademark of Apple Inc., registered in the U.S. and other countries.

---

## Google

Google and Google Play are trademarks of Google LLC.

## 9 Frequently asked questions

### **My Bluetooth earpieces do not turn on.**

The battery level is low. Charge the earpieces.

### **I cannot pair my Bluetooth earpieces with my Bluetooth device.**

Bluetooth is disabled. Turn on your device and enable the Bluetooth feature before you turn on the earpieces.

### **Pairing does not work.**

- Put both earpieces into charging box.
- Make sure you have disabled the Bluetooth function of any previously connected Bluetooth devices.
- On your Bluetooth device, delete "Porsche Design PDT30" from the Bluetooth list.
- Pair your earpieces (see 'Pair the earpieces with your Bluetooth device for the first time' on page 7).

### **The Bluetooth device cannot find the earpieces.**

- The earpieces may be connected to a previously paired device. Turn off the connected device or move it out of range.
- Pairing may have been reset or the earpieces have been previously paired with another device. Pair the earpieces with the Bluetooth device again as described in the user manual (see 'Pair the earpieces with your Bluetooth device for the first time' on page 7).

### **My Bluetooth earpieces are connected to a Bluetooth stereo-enabled mobile phone, but music only plays on the mobile phone speaker.**

Refer to the user manual of your mobile phone. Select to listen to music through the earpieces.

### **The audio quality is poor and a crackling noise can be heard.**

- The Bluetooth device is out of range. Reduce the distance between your earpieces and Bluetooth device, or remove obstacles between them.
- Charge your earpieces.

### **The audio quality is poor when streaming from a mobile phone, is very slow or streaming does not work at all.**

Make sure your mobile phone not only supports (mono) HSP/HFP but also supports A2DP and is BT4.0x (or higher) compatible (see 'Technical data' on page 12).

### **Clean your headphones regularly**

- Use a clean, damp cloth to clean your headphones - especially the sound conduits and the microphone holes - regularly and avoid buildup of substances such as sweat or earwax.
- If any sweat or water droplets are left in the sound conduits, air holes or microphone holes, the sound level will temporarily drop or cut out entirely. This is not a malfunction. Use a soft, damp cloth to dry the headphones thoroughly.
- Be sure the headphones are completely dry before charging and using. Avoid using disposable alcohol pads or other substances for cleaning.

### **Charge your headphones regularly**

If the headset is not used for a long time, the rechargeable battery will begin to lose its charge. To avoid this loss, please fully charge the battery at least once every three months.

