

# PHILIPS

## Headphones

### Fidelio L4



# User manual

Register your product and get support at  
[www.philips.com/support](http://www.philips.com/support)

# Contents

---

1	Important safety instructions	2
	Hearing Safety	2
	General information	2

---

2	Your Bluetooth headphones	3
	What's in the box	3
	Other devices	3
	Overview of your Bluetooth wireless headset	4

---

3	Get started	5
	Charge the battery	5
	Pair the headphones with your mobile phone	5

---

4	Use your headphones	6
	Connect the headphones to a Bluetooth device	6
	Manage your calls and music	6

---

5	Technical data	8
---	----------------	---

---

6	Notice	9
	Declaration of conformity	9
	Disposal of your old product and battery	9
	Remove the integrated battery	9
	Compliance with EMF	9
	Environmental information	10
	Notice of compliance	10

---

7	Trademarks	11
---	------------	----

---

8	Frequently asked questions	12
---	----------------------------	----

# 1 Important safety instructions

## Hearing Safety



### Danger

- To avoid hearing damage, limit the time you use headphones at high volume and set the volume to a safe level. The louder the volume, the shorter the safe listening time is.

Be sure to observe the following guidelines when using your headset.

- Listen at reasonable volumes for reasonable periods of time.
- Be careful not to adjust the volume continuously upwards as your hearing adapts.
- Do not turn up the volume so high that you can't hear what's around you.
- You should use caution or temporarily discontinue use in potentially hazardous situations.
- Excessive sound pressure from earphones and headphones can cause hearing loss.
- Using headphones with both ears covered while driving is not recommended and may be illegal in some areas while driving.
- For your safety, avoid distractions from music or phone calls while in traffic or other potentially dangerous environments.

## General information

To avoid damage or malfunction:

### Caution

- Do not expose headphones to excessive heat
- Do not drop your headphones.
- Headphones shall not be exposed to dripping or splashing.
- Do not allow your headphones to be submerged in water.
- Do not use any cleaning agents containing alcohol, ammonia, benzene, or abrasives.
- If cleaning is required use a soft cloth, if necessary dampened with a minimum amount of water or diluted mild soap, to clean the product.
- The integrated battery shall not be exposed to excessive heat such as sunshine, fire or the like.
- Replacement of a battery with an incorrect type that can defeat a safeguard;
- Disposal of a battery into fire or a hot oven, or mechanically crushing or cutting of a battery, that can result in an explosion;
- Leaving a battery in an extremely high temperature surrounding environment that can result in an explosion or the leakage of flammable liquid or gas;
- A battery subjected to extremely low air pressure that may result in an explosion or the leakage of flammable liquid or gas.
- Never use your headphones when you are operating a motor vehicle, riding a bicycle, running or walking in traffic areas. It is dangerous and illegal in many places.
- To avoid risk of fire, the equipment is supplied only by external power source which output shall comply with PS1 (with output capacity less than 15W)

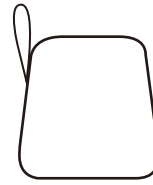
About operating and storage temperatures and humidity

- Operating temperature: 0°C (32°F) to 40°C (104°F)
- Storage temperature: -10°C (14°F) to 45°C (113°F)
- Operating humidity: 8% - 90% RH (No condensation)
- Storage humidity: 5% - 90% RH (No condensation)
- Maximum operating altitude: 3000m
- Battery life may be shorter in high or low temperature conditions.

# 2 Your Bluetooth headphones

Congratulations on your purchase, and welcome to Philips! To fully benefit from the support that Philips offers, register your product at [www.philips.com/welcome](http://www.philips.com/welcome). With this Philips over-ear headphones, you can:

- enjoy convenient wireless handsfree calls;
- enjoy and control wireless music;
- switch between calls and music;
- enjoy noise cancelation.



Carrying case



Quick start guide



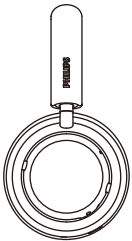
Global Warranty



Safety leaflet

---

## What's in the box



Philips Bluetooth over-ear headphones  
Philips Fidelio L4



USB-C charging cable (for charging only)



Audio cable

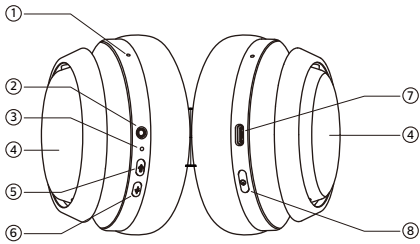
---

## Other devices

A mobile phone or device (e.g. note-book, PAD, Bluetooth adapters, MP3 players etc) which supports Bluetooth and is compatible to the headset (see 'Technical data' on page 8).

---

## Overview of your Bluetooth wireless headset



- ① LED indicator
- ② Audio jack
- ③ ANC/Awareness LED indicator
- ④ Touch Control Panel
- ⑤ Voice Assistant
- ⑥ ANC/Awareness mode button
- ⑦ USB Type C charger slot
- ⑧ ⏻ (Power button)

# 3 Get started

## Charge the battery

### Note

- Before you use your headset for the first time, charge the battery for 2 hours for optimum battery capacity and lifetime.
- Use only the original USB charging cable to avoid any damage.
- Finish your call before charging the headset, as connecting the headset for charging will power the headset off.

Connect the supplied USB charging cable to:


- The USB type C charging slot on the headphones and;
  - The charger/USB port of a computer.
- ↳ LED turns white during charging and turns off when the headphones in fully charged.

### Tip

- Normally, a full charge takes 2 hours.

## Pair the headphones with your mobile phone

Before you use the headphones with your mobile phone for the first time, pair it with a mobile phone. A successful pairing establishes a unique encrypted link between the headphones and mobile phone. The headphones store the last 4 devices in the memory. If you try to pair more than 4 devices, the earliest paired device is replaced by the new one.

- 1 Make sure that the headphones are fully charged and turned off.
- 2 Press and hold  for 5 seconds until the blue and white LED flashes alternately.
  - ↳ The headphone remain in pairing mode for 5 minutes.
- 3 Make sure that the mobile phone is turned on and its Bluetooth feature is activated.
- 4 Pair the headphones with the mobile phone. For detailed information, refer to the user manual of your mobile phone.

The following example shows you how to pair the headphones with your mobile phone.

- ↳ Activate the Bluetooth feature of your mobile phone, select **Philips Fidelio L4**



Philips Fidelio L4

## 4 Use your headphones

### Connect the headset to your Bluetooth device

- 1 Turn on your mobile phone/ Bluetooth device.
- 2 Press and hold the on/off button to turn the headphones on.
  - ↳ The blue LED will turn on 2s.
  - ↳ The headphones are reconnected to the last connected mobile phone/ Bluetooth device automatically.

#### Tip

- If you turn on the mobile phone/Bluetooth device or activate the Bluetooth feature after turning on the headphones, you have to reconnect the headphones and mobile phone/ Bluetooth device manually.

#### Note

- If the headphones fail to connect to last connected Bluetooth device within range in 3 minutes, it will change to pairing mode, then will switch off automatically if it's still not connected to any Bluetooth device 5 minutes later.

### Wired Connection

You can also use the headphones with the audio cable provided. Connect the supplied audio cable to the headphones and external audio device.

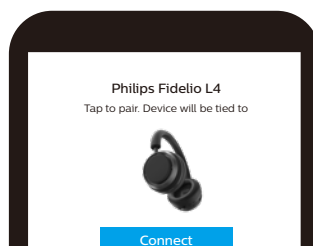
#### Tip

- The function keys will be disabled when using line-in mode.

### Google Fast Pairing

The headphone supports Google Fast Pairing

- Enter pairing mode of the headphone.
- The Bluetooth of Android smartphone should also turn on.
- The headphone will be automatically detected by the Android smartphone



### Multi-point connection

Pairing

- Pairing the headphones to 2 devices, e.g. mobile phone and notebook.

Switch between device

- At anytime, only can listen to music from 1 device. Another device will be for phone call.
- Pause the audio from 1 device and then start play audio from the another device.

#### Note

- When streaming audio from Device 1, receiving a call from Device 2 will automatically pause Device 1 playback. And the call will be routed automatically to headphones.
- Ending the call will automatically resume playback from device 1.

## Manage your calls and music

### On/off

Task	Button	Operation
Turn the headphones on	Power button	Press and hold for 2 seconds.
Turn the headphones off	Power button	Press and hold for 2 seconds. ↳ The blue LED is on and fades out.

### Music control

Task	Button	Operation
Play or pause music	Touch Control Panel	Tape 2 twice
Adjust volume.	Touch Control Panel	Swipe up/ Swipe down
Next track.	Touch Control Panel	Swipe front
Previous track.	Touch Control Panel	Swipe back

### Call control

Task	Button	Operation
Pick up/hang up a call.	Touch Control Panel	Tape twice
Reject call.	Touch Control Panel	Touch 1 sec
Answer new call during a call.	Touch Control Panel	Tape twice
Reject new call during a call.	Touch Control Panel	Touch 1 sec
Switch call when answered two calls	Touch Control Panel	Tape twice

### ANC/Awareness control

Task	Button	Operation
ANC ON/ANC OFF/Awareness mode	ANC / Awareness Mode button	Press once
Quick conversation		Palm over the Right ear cup

### Google Assistant

Task	Button	Operation
Wake up Google assistant	Voice Assistant button	Press and hold
Playback notification	Voice Assistant button	Press once
Cancel Google Assistance or notification	Voice Assistant button	Press twice



#### Note

- Smartphones have to install the Google Assistant app.

### Smartphone voice assist function (e.g. Google app, Siri)

Task	Button	Operation
Wake up smartphone voice assist function	Touch sensor panel	Press once



#### Note

- Please refer to the operating instructions of the smartphone.

### Other headphones indicator status

Headphones status	Indicator
The headphones are connected to a Bluetooth device, while the headphones in standby mode or while you are listening to music.	The blue LED blink slowly.
The headphones are ready for pairing.	The LED flashes blue and white alternately.
The headphones are on but not connected to a Bluetooth device.	The white LED flashes slowly. If no connection can be made, the headphones will turn itself off within 3 minutes.
Low battery level.	The white LED blink slowly until it is out of power
Battery is fully charged.	White LED is off.



---

## Wearing Detection

- The music playback will be paused when take off the headphone from wearing.
- Then, the music playback will be resumed when you put on the headphone.

### Note

- If you do not wear the headphone for more than 5 minutes, the headphone will be powered off.

---

## APP download

Scan the QR code/press 'Download' button or search 'Philips Headphones' in Apple App Store or Google Play to download App.



# 5 Technical data

## Headphone

- Music time: 50 hours (ANC off) | 40 hours (ANC on)
- Talk time: 50 hours (ANC off) | 40 hours (ANC on)
- Charging time: 2 hours
- Rechargeable lithium polymer battery (800 mAh)
- Bluetooth version: 5.2
- Compatible Bluetooth profiles:
  - HFP (Hands-Free Profile)
  - A2DP (Advanced Audio Distribution Profile)
  - AVRCP (Audio Video Remote Control Profile)
- Frequency range: 2.402–2.480 GHz
- Transmitter power: < 10 dBm
- Operating range: Up to 10 meters (33 feet)
- Digital echo & noise reduction
- Auto power off
- Type -C-USB port for charging
- Supports ACC

### Note

- Specifications are subject to change without notice.

# 6 Notice

## Declaration of conformity

Hereby, MMD Hong Kong Holding Limited declares that this product is in compliance with the essential requirements and other relevant provisions of Directive 2014/53/EU. You can find the Declaration of Conformity on [www.p4c.philips.com](http://www.p4c.philips.com).

## Disposal of your old product and battery



Your product is designed and manufactured with high quality materials and components, which can be recycled and reused.



This symbol on a product means that the product is covered by European Directive 2012/19/EU.

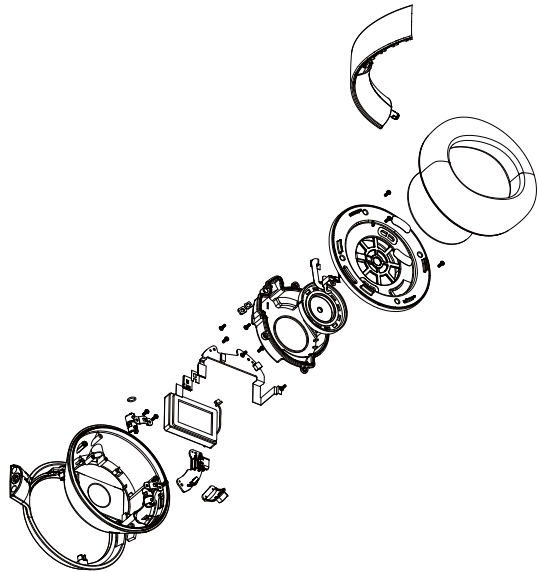


This symbol means that the product contains a built-in rechargeable battery covered by European Directive 2013/56/EU which cannot be disposed of with normal household waste. We strongly advise you to take your product to an official collection point or a Philips service centre to have a professional remove the rechargeable battery. Inform yourself about the local separate collection system for electrical and electronic products and rechargeable batteries. Follow local rules and never dispose of the product and rechargeable batteries with normal household waste. Correct disposal of old products and rechargeable batteries helps prevent negative consequences for the environment and human health.

## Remove the integrated battery

If there is no collection/recycling system for electronic products in your country, you can protect the environment by removing and recycling the battery before disposing the headphones.

- Make sure the headset is disconnected from the charging case before removing the battery.



## Compliance with EMF

This product complies with all applicable standards and regulations regarding exposure to electromagnetic fields.

---

## Environmental information

All unnecessary packaging has been omitted. We have tried to make the packaging easy to separate into three materials: cardboard (box), polystyrene foam (buffer) and polyethylene (bags, protective foam sheet.)

Your system consists of materials which can be recycled and reused if disassembled by a specialized company. Please observe the local regulations regarding the disposal of packaging materials, exhausted batteries and old equipment.

---

## Notice of compliance

The device complies with the FCC rules, Part 15. Operation is subject to the following two conditions:

1. This device may not cause harmful interference, and
2. This device must accept any interference received, including interference that may cause undesired operation.

### FCC rules

This equipment has been tested and found to comply with the limits for a Class B digital device, pursuant to part 15 of the FCC Rules. These limits are designed to provide reasonable protection against harmful interference in a residential installation. This equipment generates, uses and can radiate radio frequency energy and, if not installed and used in accordance with the instruction manual, may cause harmful interference to radio communications. However, there is no guarantee that interference will not occur in a particular installation. If this equipment does cause harmful interference to radio or

television reception, which can be determined by turning the equipment off and on, the user is encouraged to try to correct the interference by one or more of the following measures:

- Reorient or relocate the receiving antenna.
- Increase the separation between equipment and receiver
- Connect the equipment into an outlet on a circuit different from that to which the receiver is connected.
- Consult the dealer or an experienced radio/TV technician for help.

### FCC Radiation Exposure Statement:

This equipment complies with FCC radiation exposure limits set forth for an uncontrolled environment.

This transmitter must not be co-located or operating in conjunction with any other antenna or transmitter.

**Caution:** The user is cautioned that changes or modifications not expressly approved by the party responsible for compliance could void the user's authority to operate the equipment.

### Canada:

This device contains licence-exempt transmitter(s)/receiver(s) that comply with Innovation, Science and Economic Development Canada's licence-exempt RSS(s). Operation is subject to the following two conditions: (1) this device may not cause harmful interference, and (2) This device must accept any interference received, including interference that may cause undesired operation of the device.

CAN ICES-003(B)/NMB-003(B)

### IC Radiation Exposure Statement:

This transmitter must not be co-located or operating in conjunction with any other antenna or transmitter. This equipment should be installed and operated with a minimum distance of 0mm between the radiator and your body.

# 7 Trademarks

---

## Bluetooth

The Bluetooth® word mark and logos are registered trademarks owned by Bluetooth SIG, Inc. and any use of such marks by Top Victory Investment Limited is under license. Other trademarks and trade names are those of their respective owners.

---

## Siri

Siri is a trademark of Apple Inc., registered in the U.S. and other countries.

---

## Google

Google is a trademark of Google LLC. The Google Assistant is not available in certain languages and countries.

# 8 Frequently asked questions

## **My Bluetooth headset does not turn on.**

The battery level is low. Charge the headset.

## **I cannot pair my Bluetooth headset with my Bluetooth device.**

The Bluetooth is disabled. Enable the Bluetooth feature on your Bluetooth device and turn on the Bluetooth device before you turn on the headset.

## **How to reset pairing.**

Press/hold both Power button + ANC for 3s with USB power removed.

## **I hear but cannot control music on my Bluetooth device (e.g. play/pause/skip forward/backward).**

Make sure the Bluetooth audio source supports AVRCP (see 'Technical data' on page 8).

## **The volume level of the headset is too low.**

Some Bluetooth devices cannot link the volume level with the headset through volume sync. In this case, you have to adjust the volume on your Bluetooth device independently to achieve an appropriate volume level.

## **Cannot change with other USB cable.**

The product does not support USB type C to USB type C charging cable.

Please always use the supplied USB charging cable (USB type A to USB type C).

## **The Bluetooth device cannot find the headset.**

- The headset may be connected to a previously paired device. Turn off the connected device or move it out of range.
- Pairing may have been reset or the headset has been previously paired with another device. Pair the headset with the Bluetooth device again as described in the user manual. (see 'Pair the headset with your Bluetooth device at the first time' on page 6).

## **My Bluetooth headset is connected to a Bluetooth stereo enabled mobile phone, but music only plays on the mobile phone speaker.**

Refer to the user manual of your mobile phone. Select to listen to music through the headset.

## **The audio quality is poor and crackling noise can be heard.**

- The Bluetooth device is out of range. Reduce the distance between your headset and Bluetooth device, or remove obstacles between them.
- Charge your headset.

For further support, visit [www.philips.com/support](http://www.philips.com/support).



Philips and the Philips Shield Emblem are registered trademarks of Koninklijke Philips N.V. and are used under license. This product has been manufactured by and is sold under the responsibility of MMD Hong Kong Holding Limited or one of its affiliates, and MMD Hong Kong Holding Limited is the warrantor in relation to this product.

