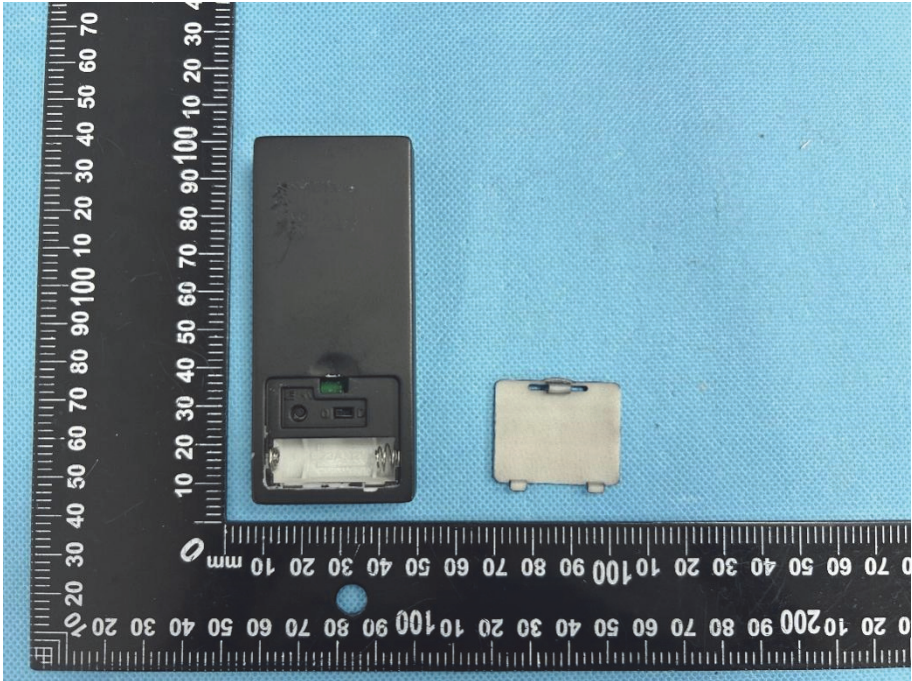
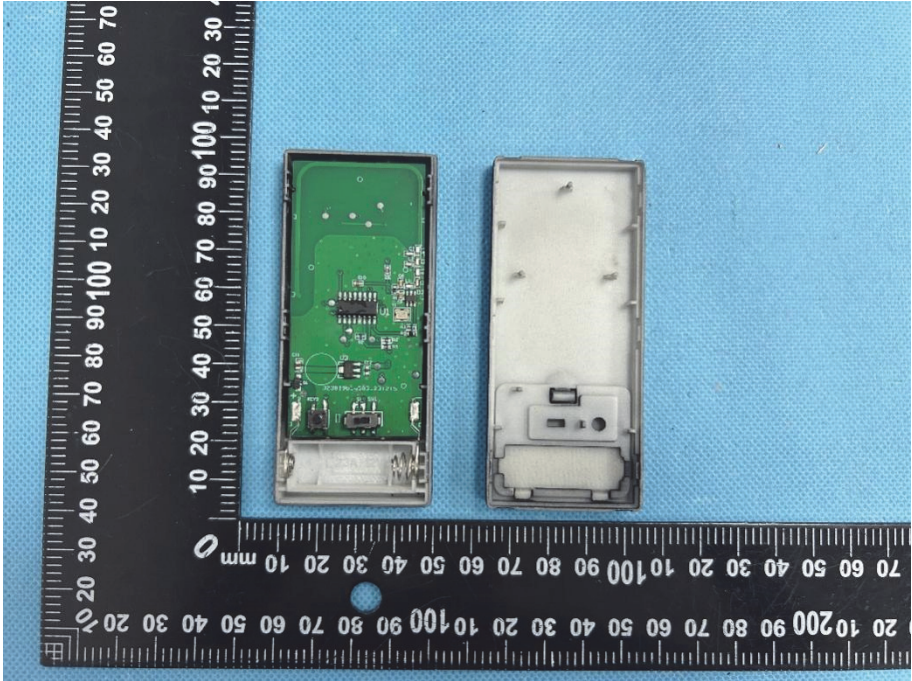
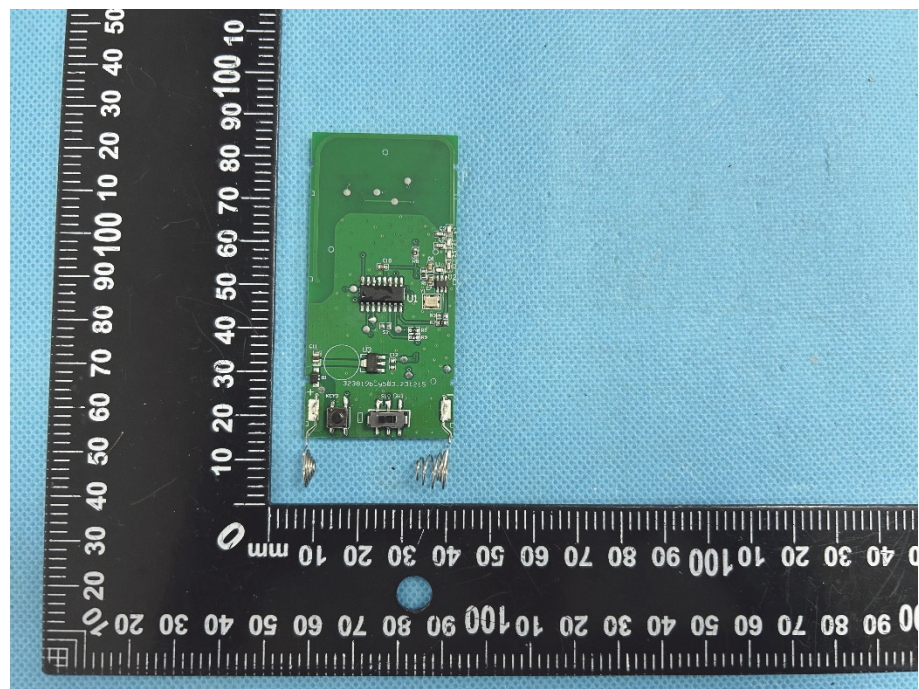


### EXHIBIT 3 - EUT INTERNAL PHOTOGRAPHS

<p><b>EUT Housing and Board View 1</b></p>	 <p>This photograph shows the external components of the EUT. On the left is a black plastic housing with a battery compartment at the bottom. To its right is a small, rectangular, light-colored component. Both items are placed on a blue textured surface next to a black ruler with white markings for scale.</p>
<p><b>EUT Housing and Board View 2</b></p>	 <p>This photograph shows the internal components of the EUT. On the left is a green printed circuit board (PCB) populated with various electronic components, including a microcontroller and several capacitors. To its right is the white plastic housing, showing the internal structure and mounting points. Both items are placed on a blue textured surface next to a black ruler with white markings for scale.</p>

**Solder  
Board-Component  
View 1**



**Solder  
Board-Component  
View 2**

