

EXHIBIT 3 - EUT INTERNAL PHOTOGRAPHS

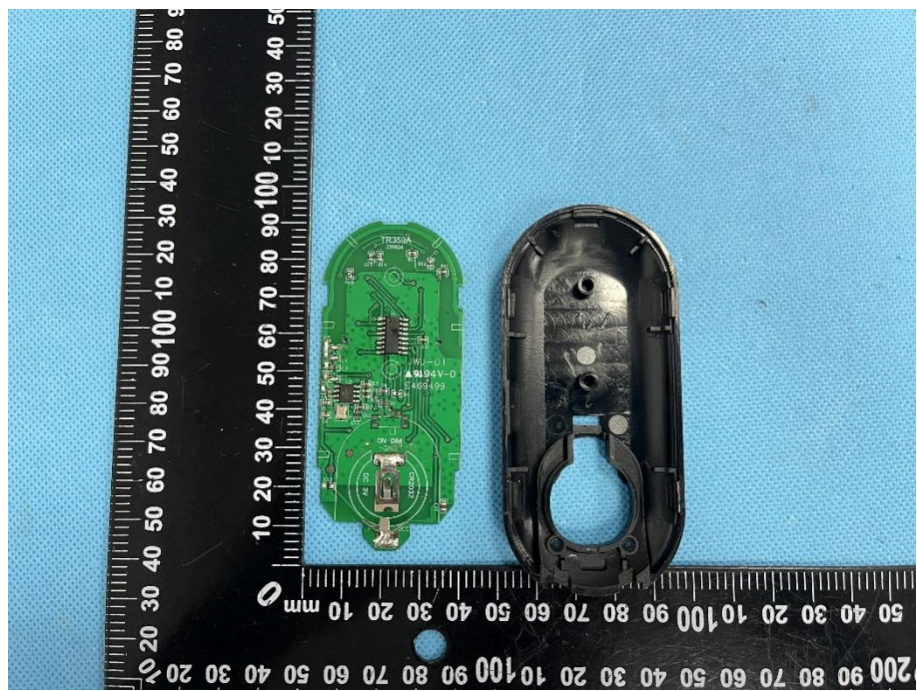
EUT Housing and Board View 1



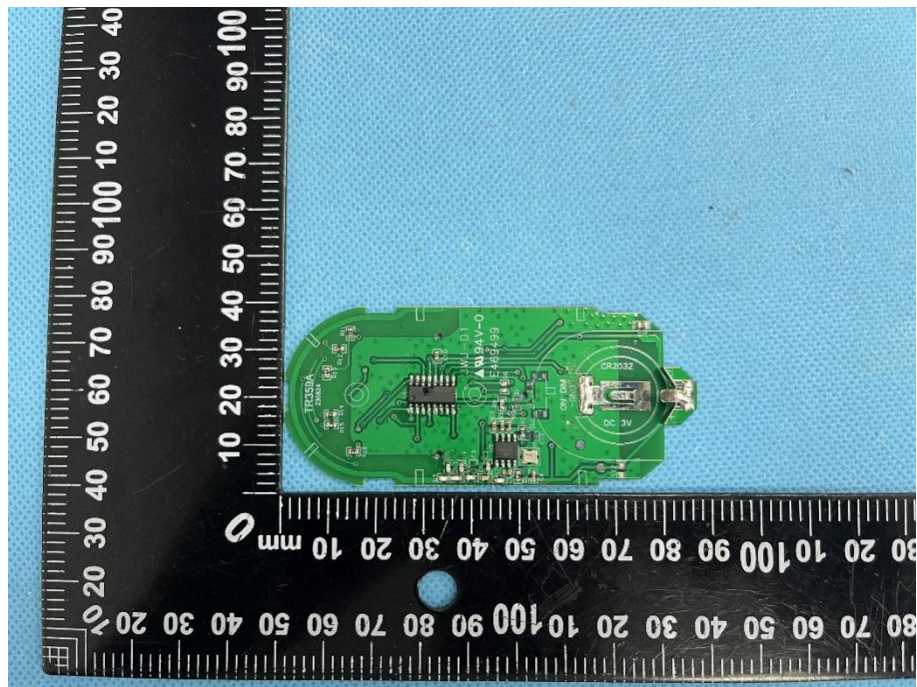
EUT Housing and Board View 2

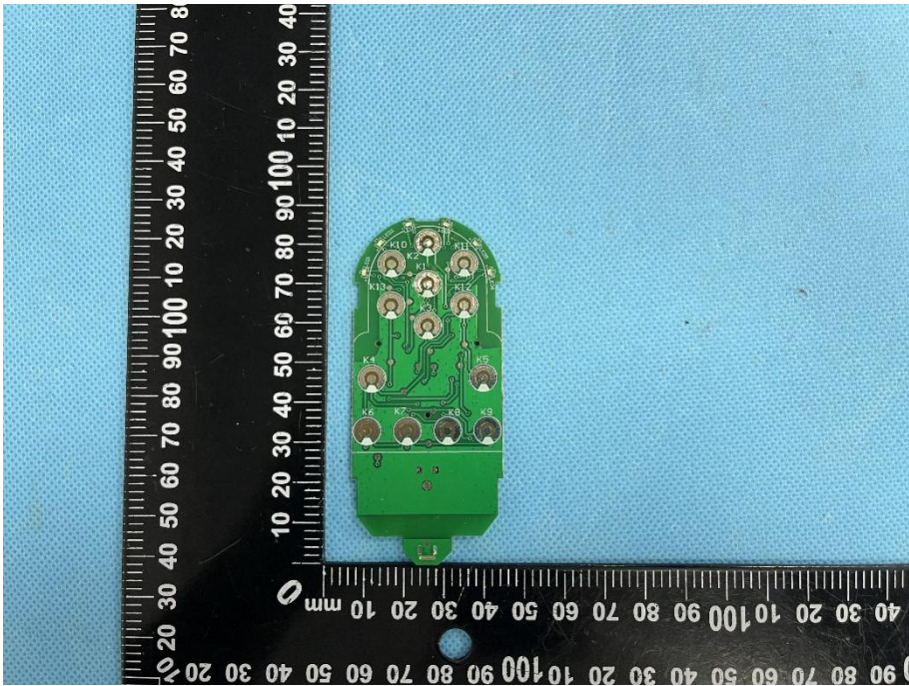
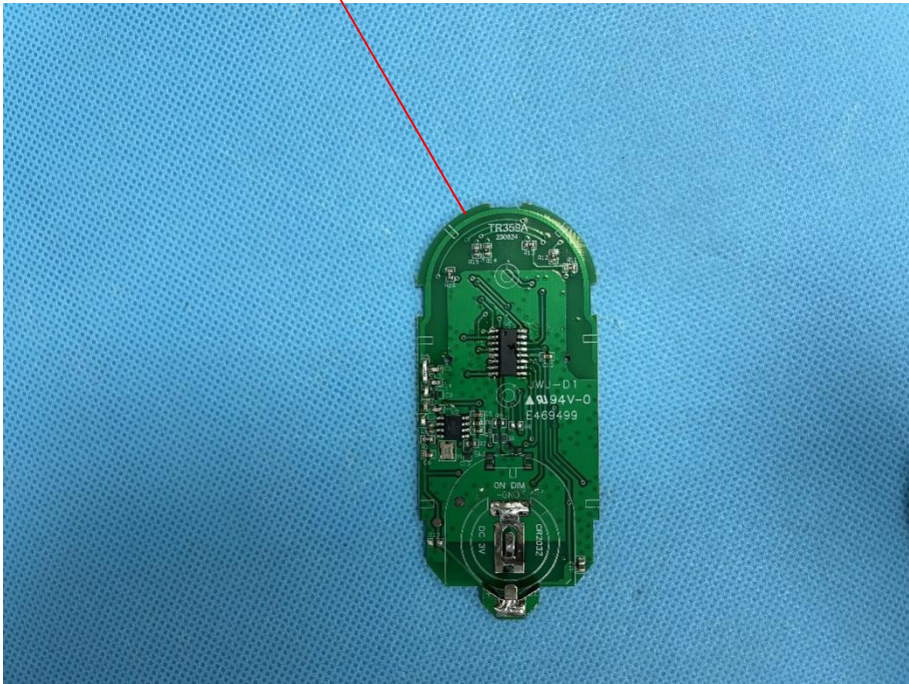


**EUT Housing and
Board View 3**



**Solder
Board-Component
View 1**



<p>Solder Board-Component View 2</p>	 <p>A photograph of a green PCB component with several soldered connections. The component is positioned next to a black ruler with white markings in millimeters. The ruler shows the component's dimensions, which are approximately 100mm in length and 20mm in width.</p>
<p>Antenna View</p>	<p>433.92MHz Antenna</p>  <p>A photograph of the same green PCB component from a different perspective, showing the antenna structure. A red line points from a text box labeled "433.92MHz Antenna" to the antenna area on the board. The board features various components, including a TR3529A antenna chip, a W1-D1 chip, and a 3.3V-0 component. The board is marked with "669499" and "CN DINA".</p>