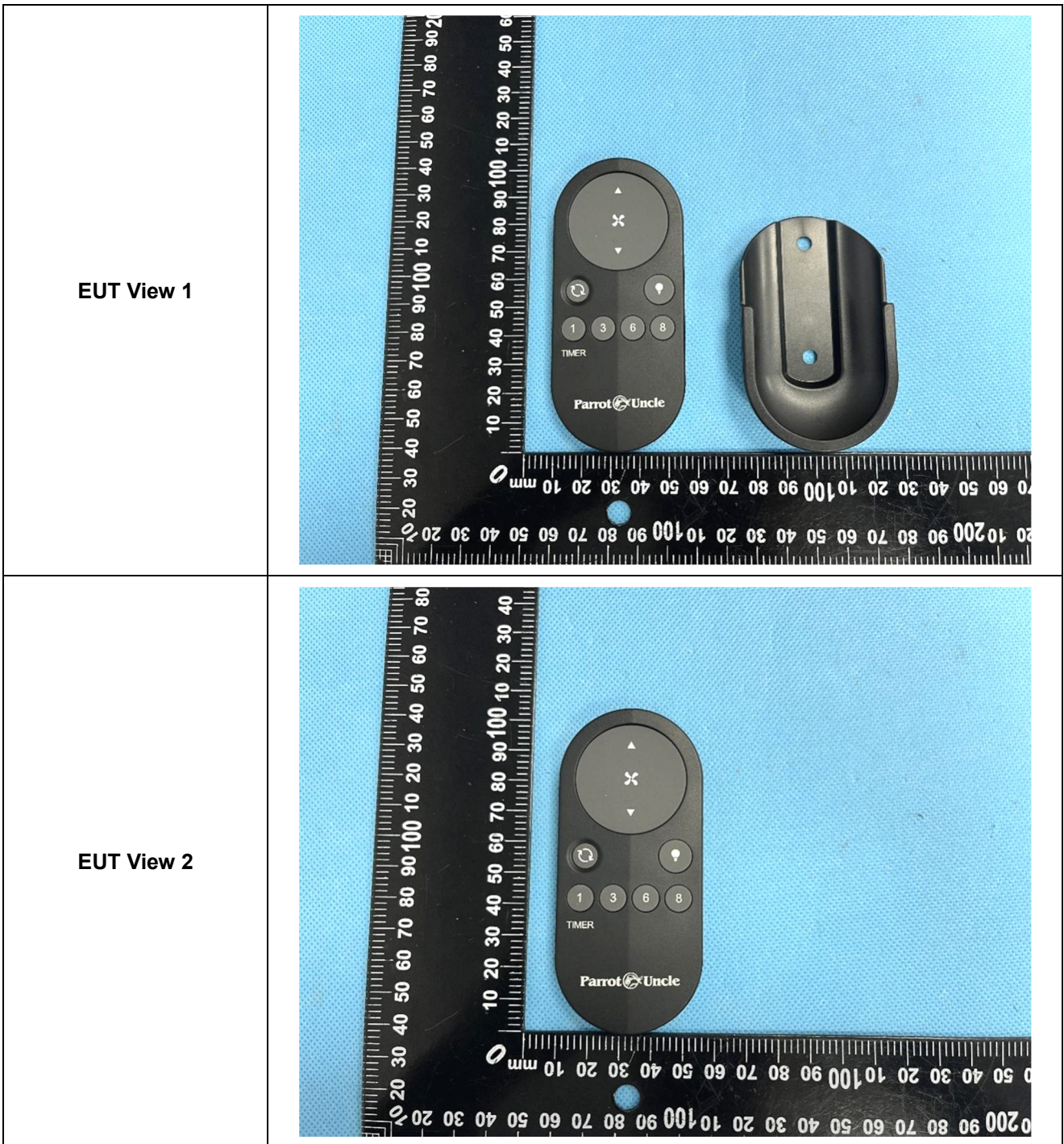

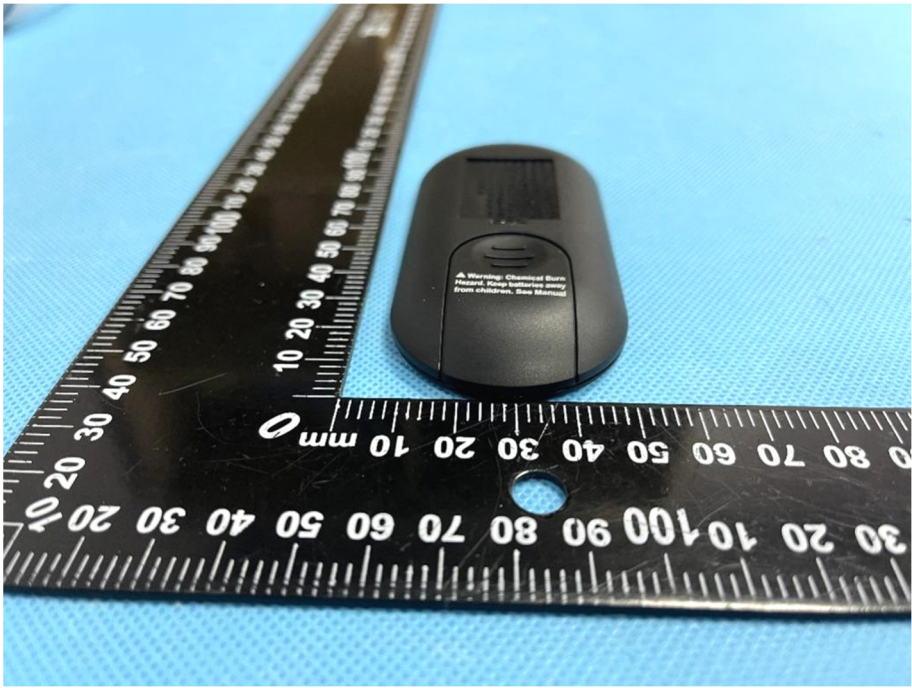
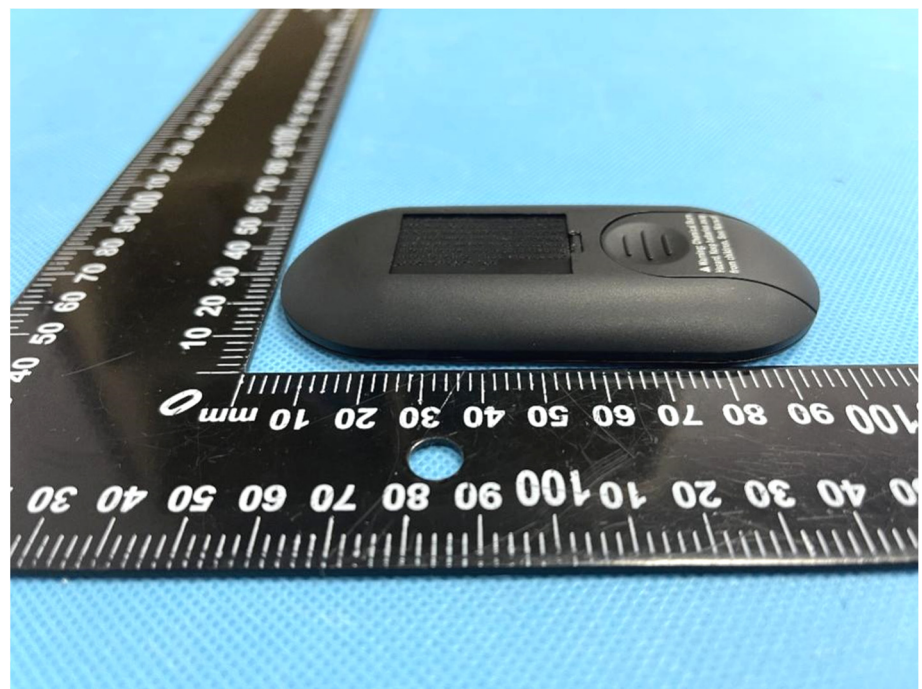


EXHIBIT 2 - EUT EXTERNAL PHOTOGRAPHS

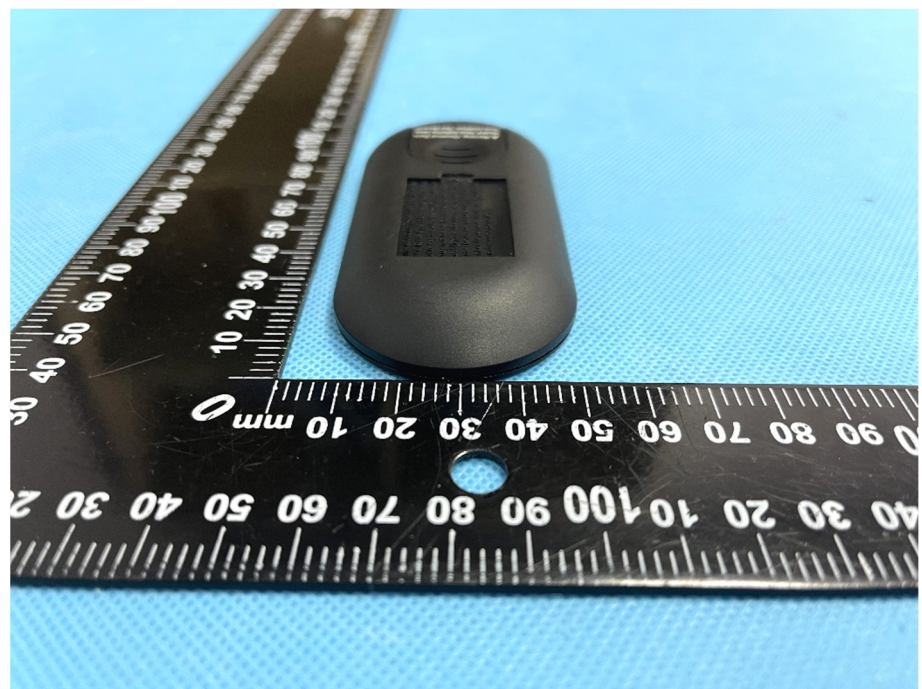


<p>EUT View 3</p>	 A black, oval-shaped electronic unit is shown against a blue background. A black ruler with white markings is placed vertically to the left of the unit. The unit has a rectangular display area at the top and a small circular feature at the bottom. A warning label is visible on the bottom part of the unit, which reads: "A Warning: Chemical Burns Hazard. Keep children away from children. See Manual".
<p>EUT View 4</p>	 A close-up view of the black, oval-shaped electronic unit. A black ruler with white markings is placed horizontally below the unit. The unit's features, including the display area and the warning label, are more clearly visible in this view. The warning label text is: "A Warning: Chemical Burns Hazard. Keep children away from children. See Manual".

EUT View 5



EUT View 6



EUT View 7

