

FCC TEST REPORT

Client Name : Gopod Group Limited.
Address : 6/F., 235 Wing Lok Trade Centre, Sheung Wan, Hong Kong
Product Name : wireless charging Pad
Date : Jun. 29, 2019

Shenzhen Anbotek Compliance Laboratory Limited

Contents

1. General Information.....	4
1.1. Client Information.....	4
1.2. Description of Device (EUT).....	4
1.3. Auxiliary Equipment Used During Test.....	4
1.4. Description of Test Modes.....	5
1.5. Description Of Test Setup.....	6
1.6. Test Equipment List.....	7
1.7. Description of Test Facility.....	8
2. Summary of Test Results.....	9
3. Conducted Emission Test.....	10
3.1. Test Standard and Limit.....	10
3.2. Test Setup.....	10
3.3. Test Procedure.....	10
3.4. Test Data.....	10
4. Radiation Spurious Emission and Band Edge.....	15
4.1. Test Standard and Limit.....	15
4.2. Test Setup.....	15
4.3. Test Procedure.....	16
4.4. Test Data.....	17
5. Antenna Requirement.....	21
5.1. Test Standard and Requirement.....	21
5.2. Antenna Connected Construction.....	21
APPENDIX I -- TEST SETUP PHOTOGRAPH.....	22
APPENDIX II -- EXTERNAL PHOTOGRAPH.....	24
APPENDIX III -- INTERNAL PHOTOGRAPH.....	28

TEST REPORT

Applicant : Gopod Group Limited.
Manufacturer : Gopod Group Holding Ltd.
Product Name : wireless charging Pad
Model No. : GW16A, GW16B, GW16C, GW16D, GW16E, GW16F
Trade Mark : Gmobi
Rating(s) : Input: DC 5V, 2A/9V, 2A
Output: 5W/7.5W/10W
Test Standard(s) : **FCC Part15 Subpart C 2018, Paragraph 15.209**
Test Method(s) : **ANSI C63.10: 2013**

The device described above is tested by Shenzhen Anbotek Compliance Laboratory Limited to determine the maximum emission levels emanating from the device and the severe levels of the device can endure and its performance criterion. The measurement results are contained in this test report and Shenzhen Anbotek Compliance Laboratory Limited is assumed full of responsibility for the accuracy and completeness of these measurements. Also, this report shows that the EUT (Equipment Under Test) is technically compliant with the FCC Part 15 Subpart C requirements.

This report applies to above tested sample only and shall not be reproduced in part without written approval of Shenzhen Anbotek Compliance Laboratory Limited.

Date of Receipt Jun. 01, 2019
Date of Test Jun. 01~21, 2019

Prepared By



[Signature]

(Engineer / Dolly Mo)

Reviewer

[Signature]

(Supervisor / Snowy Meng)

Approved & Authorized Signer

[Signature]

(Manager / Sally Zhang)

1. General Information

1.1. Client Information

Applicant	:	Gopod Group Limited.
Address	:	6/F., 235 Wing Lok Trade Centre, Sheung Wan, Hong Kong
Manufacturer	:	Gopod Group Holding Ltd.
Address	:	4-6/F, Building 8, Lianjian Industrial Park, Hua Rong Road, Longhua, Shenzhen, China
Factory	:	Gopod Group Holding Ltd.
Address	:	4-6/F, Building 8, Lianjian Industrial Park, Hua Rong Road, Longhua, Shenzhen, China

1.2. Description of Device (EUT)

Product Name	:	wireless charging Pad
Model No.	:	GW16A, GW16B, GW16C, GW16D, GW16E, GW16F (Note: All samples are the same except the appearance color, so we prepare "GW16A" for test only.)
Trade Mark	:	Gmobi
Test Power Supply	:	AC 240V, 60Hz for adapter/ AC 120V, 60Hz for adapter/ DC 3.7V Battery inside
Test Sample No.	:	1-2-1(Normal Sample), 1-2-2(Engineering Sample)
Product Description	:	Operation Frequency: 110.1~205KHz
	:	Modulation Type: FSK
	:	Antenna Type: Inductive loop coil Antenna
	:	Antenna Gain(Peak): 0 dBi
Remark: 1) For a more detailed features description, please refer to the manufacturer's specifications or the User's Manual.		

1.3. Auxiliary Equipment Used During Test

Adapter	:	Manufacturer: Anker Innovations Limited
	:	M/N: A2013 Input: 100-240V 50-60Hz 0.7A Output: 3.6-6.5V== 3A/ 6.5-9V== 2A/ 9-12V== 1.5A
Watch	:	Apple Watch - Series 2

1.4. Description of Test Modes

To investigate the maximum EMI emission characteristics generates from EUT, the test system was pre-scanning tested base on the consideration of following EUT operation mode or test configuration mode which possible have effect on EMI emission level. Each of these EUT operation mode(s) or test configuration mode(s) mentioned above was evaluated respectively.

Pretest Mode	Description
Mode 1	Full load, Wireless charger module

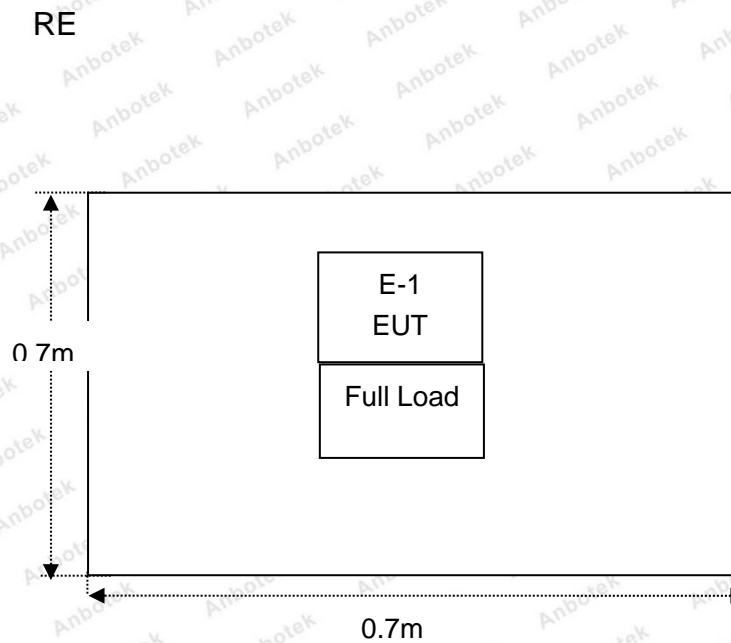
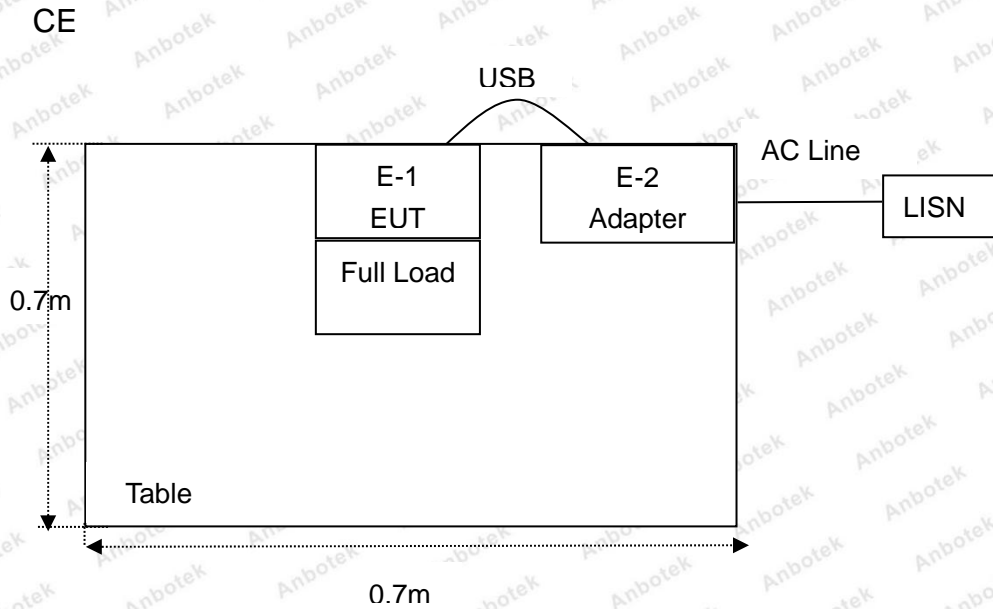
For Conducted Emission	
Final Test Mode	Description
Mode 1	Full load, Wireless charger module

For Radiated Emission	
Final Test Mode	Description
Mode 1	Full load, Wireless charger module

Note: (1)Test channel is 0.1272MHz.

(2)All the situation(full load, half load and empty load) has been tested,only the worst situation (full load) was recorded in the report.

1.5. Description Of Test Setup



1.6. Test Equipment List

Item	Equipment	Manufacturer	Model No.	Serial No.	Last Cal.	Cal. Interval
1.	L.I.S.N. Artificial Mains Network	Rohde & Schwarz	ENV216	100055	Nov. 26, 2018	1 Year
2.	EMI Test Receiver	Rohde & Schwarz	ESPI3	101604	Nov. 05, 2018	1 Year
3.	RF Switching Unit	Compliance Direction	RSU-M2	38303	Nov. 05, 2018	1 Year
4.	Spectrum Analysis	Agilent	E4407B	US39390582	Nov. 05, 2018	1 Year
5.	MAX Spectrum Analysis	Agilent	N9020A	MY51170037	Nov. 05, 2018	1 Year
6.	Preamplifier	SKET Electronic	BK1G18G30 D	KD17503	Nov. 05, 2018	1 Year
7.	Double Ridged Horn Antenna	Instruments corporation	GTH-0118	351600	Nov. 19, 2018	1 Year
8.	Bilog Broadband Antenna	Schwarzbeck	VULB9163	VULB 9163-289	Nov. 19, 2018	1 Year
9.	Loop Antenna	Schwarzbeck	FMZB1519B	00053	Nov. 19, 2018	1 Year
10.	Horn Antenna	A-INFO	LB-180400-K F	J211060628	Nov. 20, 2018	1 Year
11.	Pre-amplifier	SONOMA	310N	186860	Nov. 05, 2018	1 Year
12.	EMI Test Software EZ-EMC	SHURPLE	N/A	N/A	N/A	N/A
13.	RF Test Control System	YIHENG	YH3000	2017430	Nov. 05, 2018	1 Year
14.	Power Sensor	DAER	RPR3006W	15I00041SN045	Nov. 05, 2018	1 Year
15.	Power Sensor	DAER	RPR3006W	15I00041SN046	Nov. 05, 2018	1 Year
16.	MXA Spectrum Analysis	Agilent	N9020A	MY51170037	Nov. 05, 2018	1 Year
17.	MXG RF Vector Signal Generator	Agilent	N5182A	MY48180656	Nov. 05, 2018	1 Year
18.	Signal Generator	Agilent	E4421B	MY41000743	Nov. 05, 2018	1 Year
19.	DC Power Supply	LW	TPR-6420D	374470	Oct. 31, 2018	1 Year
20.	Constant Temperature Humidity Chamber	ZHONGJIAN	ZJ-KHWS80 B	N/A	Nov. 01, 2018	1 Year

1.7. Description of Test Facility

The test facility is recognized, certified, or accredited by the following organizations:

FCC-Registration No.: 184111

Shenzhen Anbotek Compliance Laboratory Limited, EMC Laboratory has been registered and fully described in a report filed with the (FCC) Federal Communications Commission. The acceptance letter from the FCC is maintained in our files. Registration No. 184111, July 31, 2017.

ISED-Registration No.: 8058A-1

Shenzhen Anbotek Compliance Laboratory Limited, EMC Laboratory has been registered and fully described in a report filed with the (ISED) Innovation, Science and Economic Development Canada. The acceptance letter from the ISED is maintained in our files. Registration 8058A-1, June 13, 2016.

Test Location

Shenzhen Anbotek Compliance Laboratory Limited.

1/F, Building D, Sogood Science and Technology Park, Sanwei community, Hangcheng Street, Bao'an District, Shenzhen, Guangdong, China.518102

2. Summary of Test Results

Standard Section	Test Item	Result
FCC Part 15, Paragraph 15.207	Conducted Emission Test	PASS
FCC Part 15, Paragraph 15.209(a)(f)	Spurious Emission	PASS
Part 15.203	Antenna Requirement	PASS

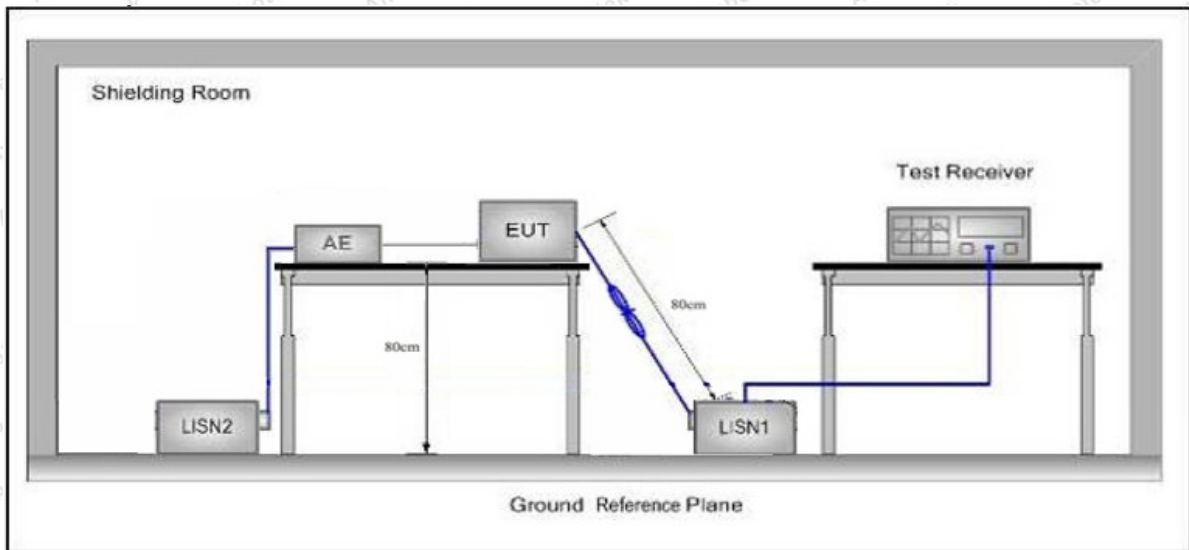
3. Conducted Emission Test

3.1. Test Standard and Limit

Test Standard	FCC Part15 Section 15.207		
	Frequency	Maximum RF Line Voltage (dBuV)	
		Quasi-peak Level	Average Level
Test Limit	150kHz~500kHz	66 ~ 56 *	56 ~ 46 *
	500kHz~5MHz	56	46
	5MHz~30MHz	60	50

Remark: (1) *Decreasing linearly with logarithm of the frequency.
(2) The lower limit shall apply at the transition frequency.

3.2. Test Setup



3.3. Test Procedure

The EUT system is connected to the power mains through a line impedance stabilization network (L.I.S.N.). This provides a 50ohm coupling impedance for the EUT system. Please refer the block diagram of the test setup and photographs. Both sides of AC line are checked to find the maximum conducted emission. In order to find the maximum emission levels, the relative positions of equipment and all of the interface cables shall be changed according to FCC ANSI C63.10-2013 on Conducted Emission Measurement.

The bandwidth of test receiver (ESCI) set at 9kHz.

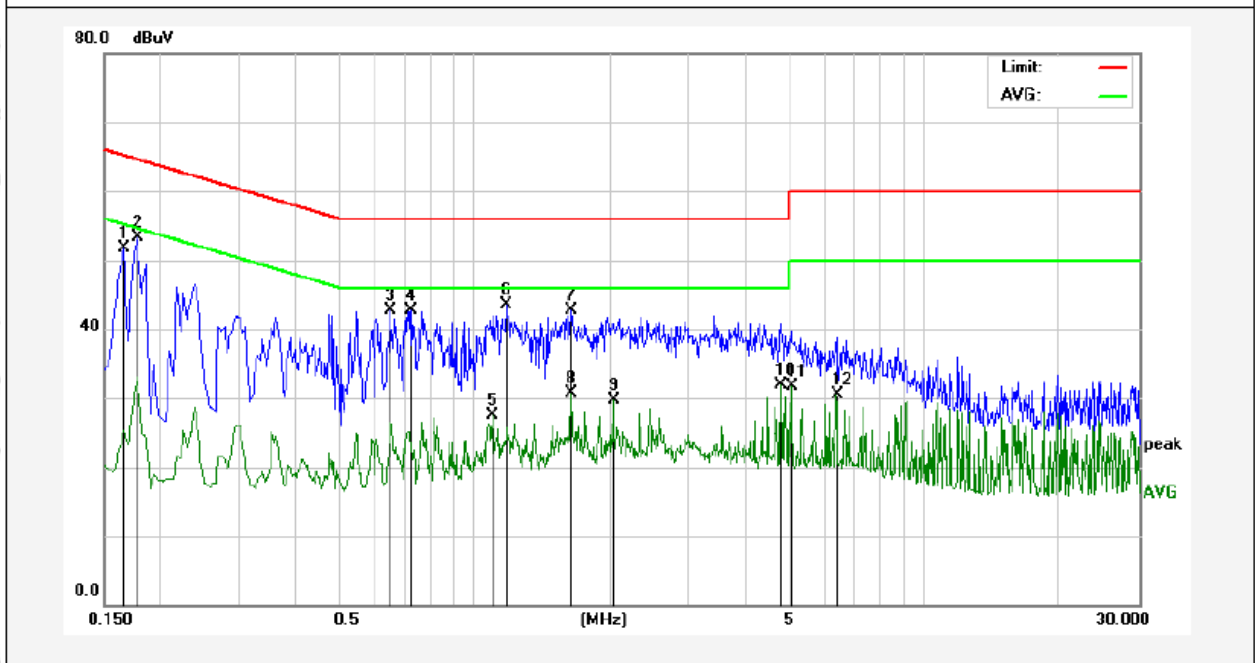
The frequency range from 150kHz to 30MHz is checked.

3.4. Test Data

Please to see the following pages

Conducted Emission Test Data

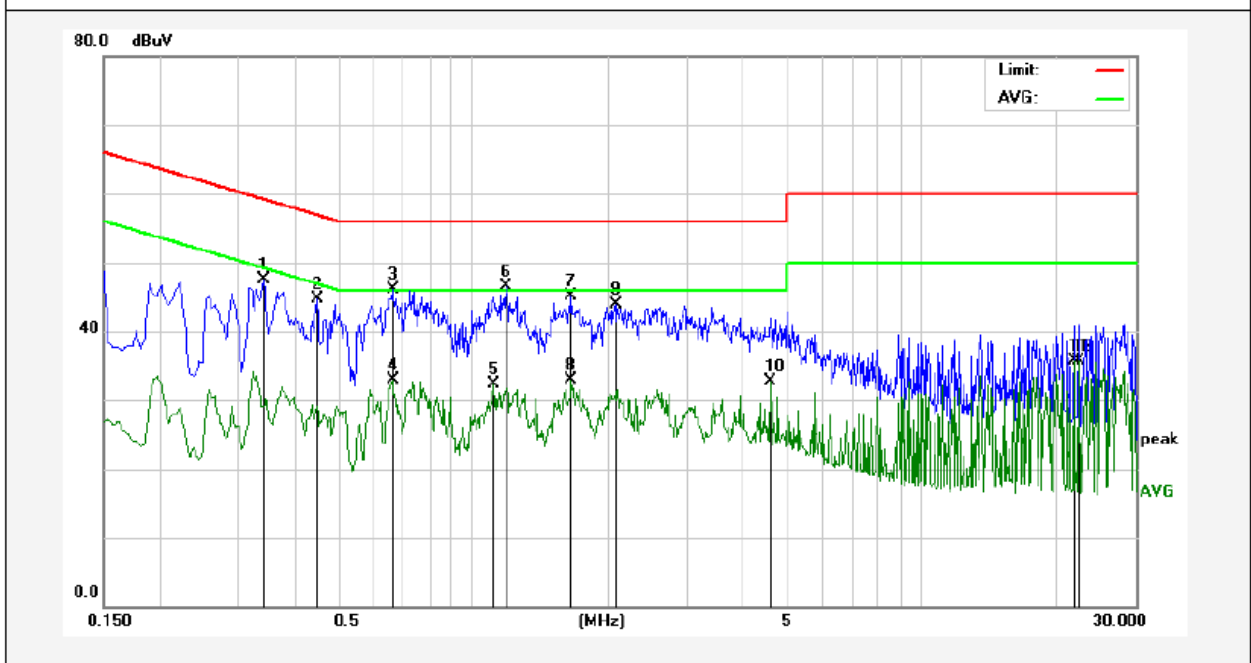
Test Site: 1# Shielded Room
 Operating Condition: Mode 1
 Test Specification: AC 240V, 60Hz for adapter
 Comment: Live Line
 Tem.: 22.3°C Hum.: 61%



No.	Freq. (MHz)	Reading (dBuV)	Factor (dB)	Result (dBuV)	Limit dBuV	Over Limit (dB)	Detector	Remark
1	0.1660	31.89	19.90	51.79	65.15	-13.36	QP	
2	0.1780	33.36	19.90	53.26	64.57	-11.31	QP	
3	0.6500	22.77	20.02	42.79	56.00	-13.21	QP	
4	0.7260	22.75	20.05	42.80	56.00	-13.20	QP	
5	1.0940	7.34	20.12	27.46	46.00	-18.54	AVG	
6	1.1780	23.36	20.12	43.48	56.00	-12.52	QP	
7	1.6420	22.51	20.13	42.64	56.00	-13.36	QP	
8	1.6420	10.59	20.13	30.72	46.00	-15.28	AVG	
9	2.0380	9.66	20.14	29.80	46.00	-16.20	AVG	
10	4.8180	11.61	20.20	31.81	46.00	-14.19	AVG	
11	5.0820	11.42	20.21	31.63	50.00	-18.37	AVG	
12	6.3580	10.22	20.24	30.46	50.00	-19.54	AVG	

Conducted Emission Test Data

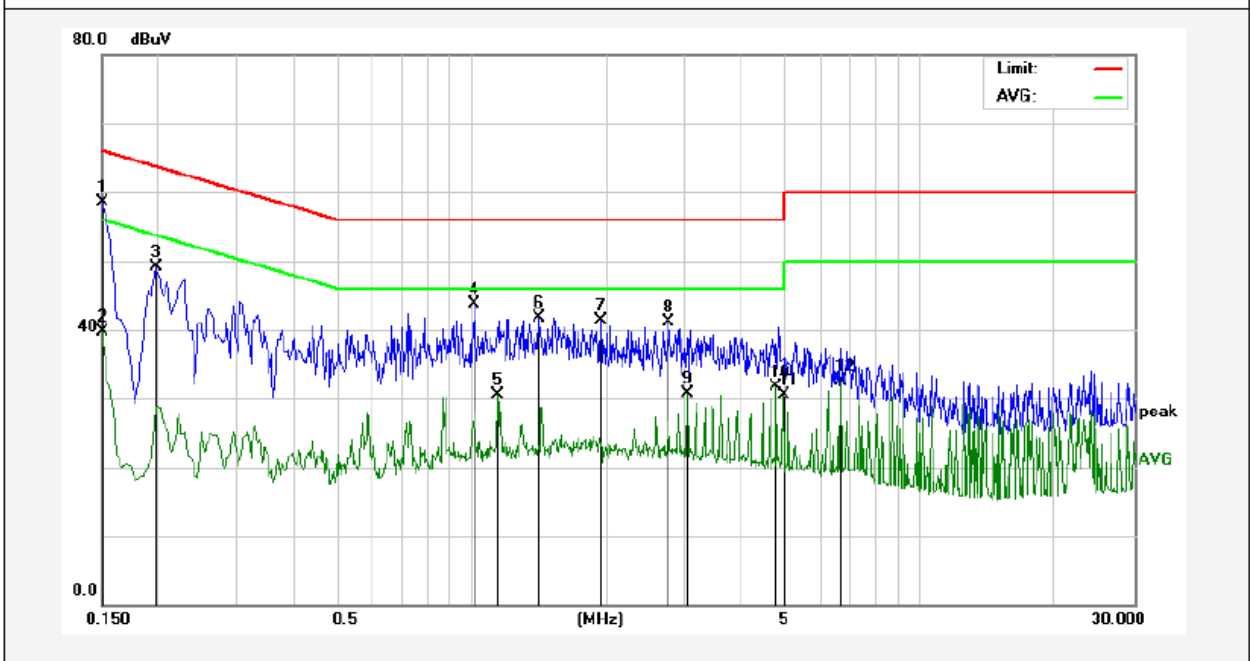
Test Site: 1# Shielded Room
 Operating Condition: Mode 1
 Test Specification: AC 240V, 60Hz for adapter
 Comment: Neutral Line
 Tem.: 22.3°C Hum.: 61%



No.	Freq. (MHz)	Reading (dBUV)	Factor (dB)	Result (dBUV)	Limit dBUV	Over Limit (dB)	Detector	Remark
1	0.3420	27.60	19.91	47.51	59.15	-11.64	QP	
2	0.4500	24.78	19.96	44.74	56.87	-12.13	QP	
3	0.6620	26.11	20.03	46.14	56.00	-9.86	QP	
4	0.6620	12.89	20.03	32.92	46.00	-13.08	AVG	
5	1.1140	12.22	20.12	32.34	46.00	-13.66	AVG	
6	1.1860	26.38	20.12	46.50	56.00	-9.50	QP	
7	1.6580	24.96	20.13	45.09	56.00	-10.91	QP	
8	1.6580	12.77	20.13	32.90	46.00	-13.10	AVG	
9	2.0780	23.73	20.14	43.87	56.00	-12.13	QP	
10	4.6060	12.44	20.20	32.64	46.00	-13.36	AVG	
11	21.8700	15.30	20.32	35.62	50.00	-14.38	AVG	
12	22.3260	15.39	20.31	35.70	50.00	-14.30	AVG	

Conducted Emission Test Data

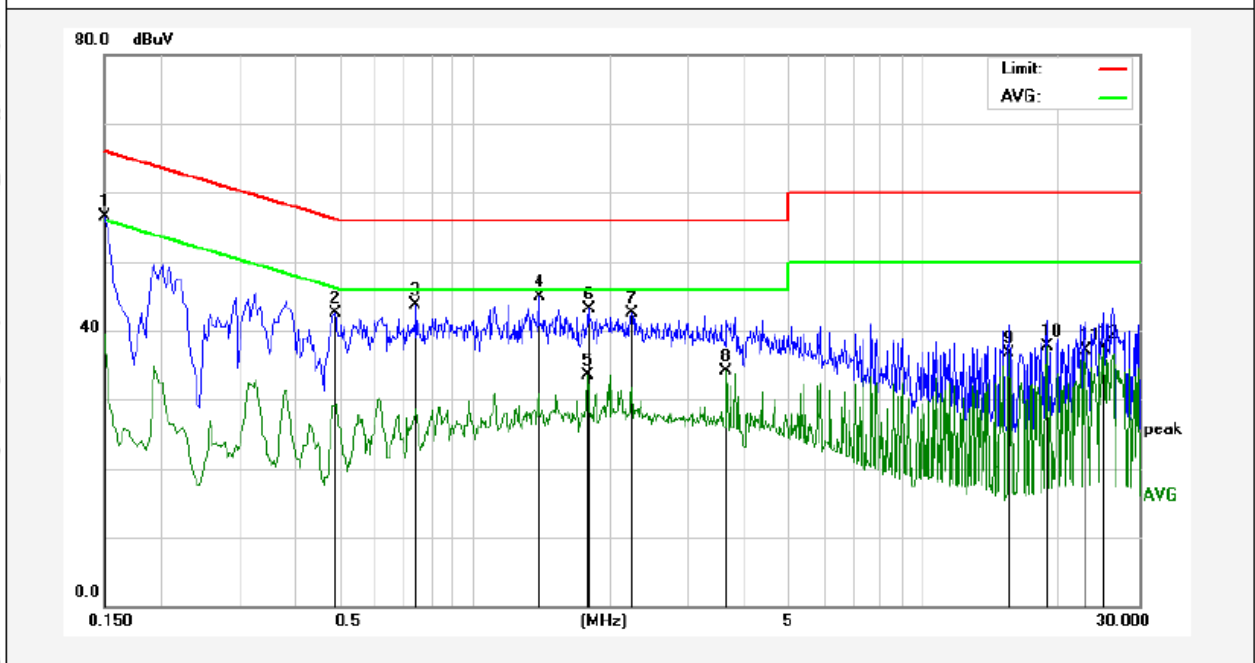
Test Site: 1# Shielded Room
 Operating Condition: Mode 1
 Test Specification: AC 120V, 60Hz for adapter
 Comment: Live Line
 Tem.: 22.3°C Hum.: 61%



No.	Freq. (MHz)	Reading (dBuV)	Factor (dB)	Result (dBuV)	Limit dBuV	Over Limit (dB)	Detector	Remark
1	0.1500	38.51	19.90	58.41	65.99	-7.58	QP	
2	0.1500	19.76	19.90	39.66	55.99	-16.33	AVG	
3	0.1980	29.16	19.90	49.06	63.69	-14.63	QP	
4	1.0180	23.61	20.12	43.73	56.00	-12.27	QP	
5	1.1460	10.45	20.12	30.57	46.00	-15.43	AVG	
6	1.4140	21.50	20.13	41.63	56.00	-14.37	QP	
7	1.9420	21.23	20.14	41.37	56.00	-14.63	QP	
8	2.7580	20.88	20.16	41.04	56.00	-14.96	QP	
9	3.0340	10.63	20.16	30.79	46.00	-15.21	AVG	
10	4.7900	11.49	20.20	31.69	46.00	-14.31	AVG	
11	4.9460	10.20	20.21	30.41	46.00	-15.59	AVG	
12	6.6580	12.33	20.25	32.58	50.00	-17.42	AVG	

Conducted Emission Test Data

Test Site: 1# Shielded Room
 Operating Condition: Mode 1
 Test Specification: AC 120V, 60Hz for adapter
 Comment: Neutral Line
 Tem.: 22.3°C Hum.: 61%



No.	Freq. (MHz)	Reading (dBuV)	Factor (dB)	Result (dBuV)	Limit dBuV	Over Limit (dB)	Detector	Remark
1	0.1500	36.59	19.90	56.49	65.99	-9.50	QP	
2	0.4900	22.57	19.98	42.55	56.17	-13.62	QP	
3	0.7420	23.61	20.05	43.66	56.00	-12.34	QP	
4	1.3900	24.68	20.13	44.81	56.00	-11.19	QP	
5	1.7900	13.40	20.14	33.54	46.00	-12.46	AVG	
6	1.7940	23.06	20.14	43.20	56.00	-12.80	QP	
7	2.2460	22.42	20.14	42.56	56.00	-13.44	QP	
8	3.6380	13.96	20.17	34.13	46.00	-11.87	AVG	
9	15.3900	16.36	20.27	36.63	50.00	-13.37	AVG	
10	18.8060	17.44	20.32	37.76	50.00	-12.24	AVG	
11	22.8380	16.87	20.31	37.18	50.00	-12.82	AVG	
12	25.1220	17.27	20.28	37.55	50.00	-12.45	AVG	

4. Radiation Spurious Emission and Band Edge

4.1. Test Standard and Limit

Test Standard	FCC Part15 C Section 15.209 and 15.205				
Test Limit	Frequency (MHz)	Field strength (microvolt/meter)	Limit (dBuV/m)	Remark	Measurement distance (m)
	0.009MHz~0.490MHz	2400/F(kHz)	-	-	300
	0.490MHz~1.705MHz	24000/F(kHz)	-	-	30
	1.705MHz~30MHz	30	-	-	30
	30MHz~88MHz	100	40.0	Quasi-peak	3
	88MHz~216MHz	150	43.5	Quasi-peak	3
	216MHz~960MHz	200	46.0	Quasi-peak	3
	960MHz~1000MHz	500	54.0	Quasi-peak	3
	Above 1000MHz	500	54.0	Average	3
-		74.0	Peak	3	

Remark:

- (1)The lower limit shall apply at the transition frequency.
- (2) 15.35(b), Unless otherwise specified, the limit on peak radio frequency emissions is 20dB above the maximum permitted average emission limit applicable to the equipment under test. This peak limit applies to the total peak emission level radiated by the device.

4.2. Test Setup

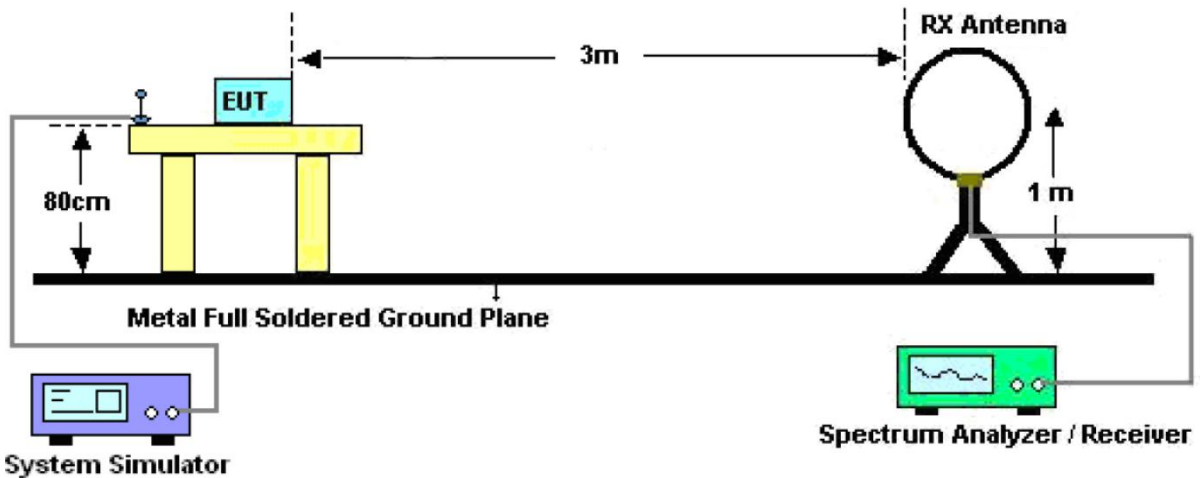


Figure 1. Below 30MHz

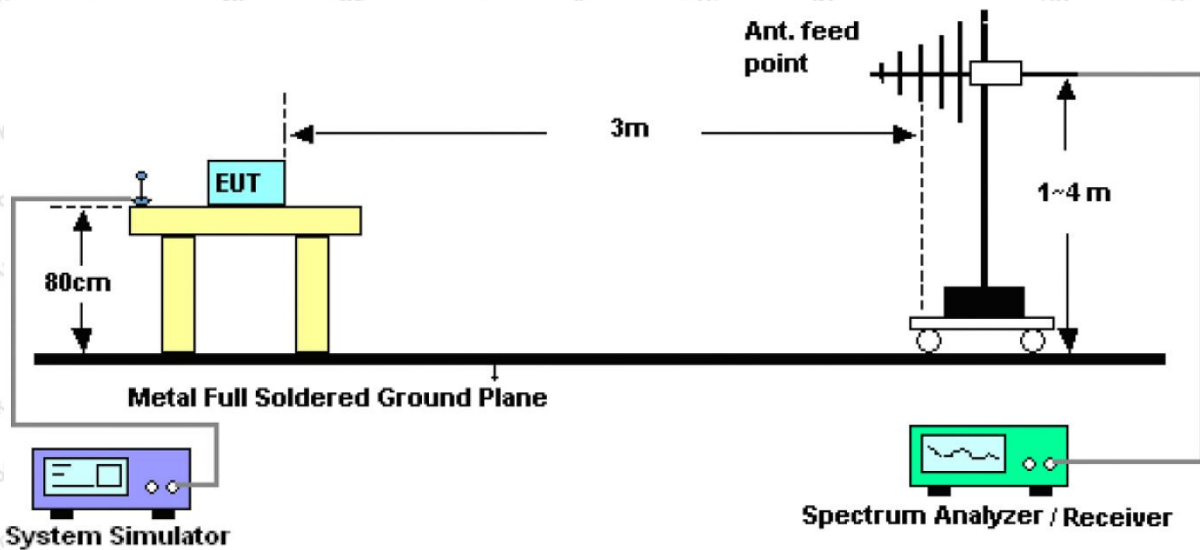


Figure 2. 30MHz to 1GHz

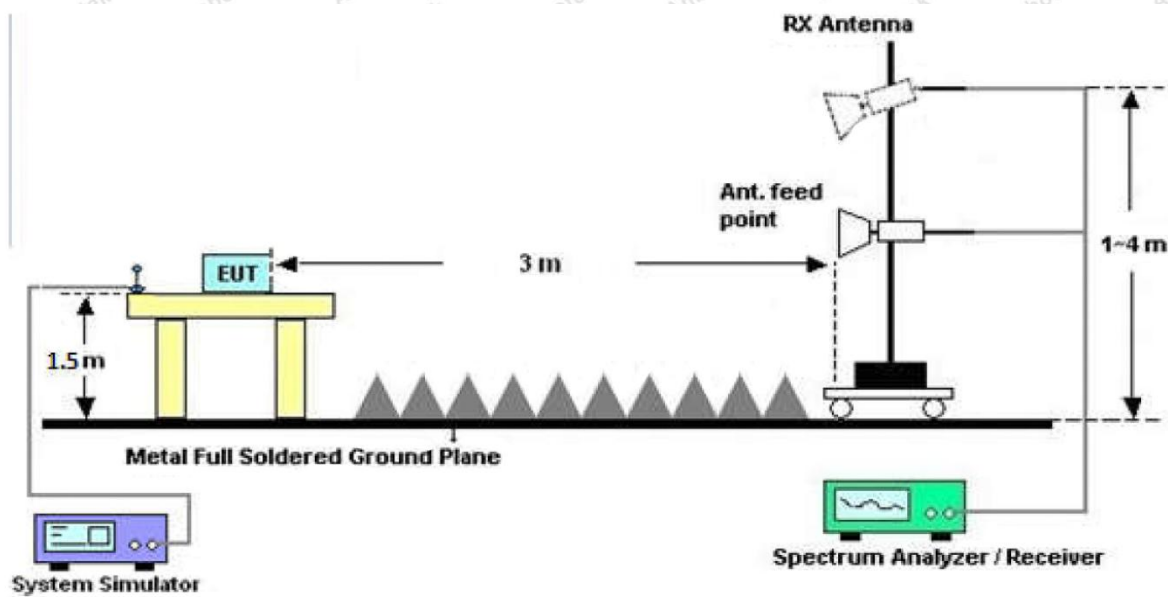


Figure 3. Above 1 GHz

4.3. Test Procedure

For below 1GHz: The EUT is placed on a turntable, which is 0.8m above the ground plane.

For above 1GHz: The EUT is placed on a turntable, which is 1.5m above the ground plane.

The turn table can rotate 360 degrees to determine the position of the maximum emission level. The EUT is set 3 meters away from the receiving antenna which is mounted on a antenna tower. The antenna can be moved up and down from 1 to 4 meters to find out the maximum emission level. Rotated the EUT through three orthogonal axes to determine the maximum emissions, both horizontal and vertical polarization of the antenna are set on test. The EUT is tested in 9*6*6 Chamber. The device is evaluated in xyz orientation.

Report No.: SZAWW190601004-01

FCC ID: 2AQZH-GW16A

Page 17 of 31

For 9kHz to 150kHz, Set the spectrum analyzer as:

RBW = 200Hz, VBW = 1kHz, Detector= Quasi-Peak, Trace mode= Max hold, Sweep- auto couple.

For 150kHz to 30MHz, Set the spectrum analyzer as:

RBW = 9kHz, VBW = 30kHz, Detector= Quasi-Peak, Trace mode= Max hold, Sweep- auto couple.

For 30MHz to 1000MHz, Set the spectrum analyzer as:

RBW = 100kHz, VBW = 300kHz, Detector= Quasi-Peak, Trace mode= Max hold, Sweep- auto couple.

4.4. Test Data

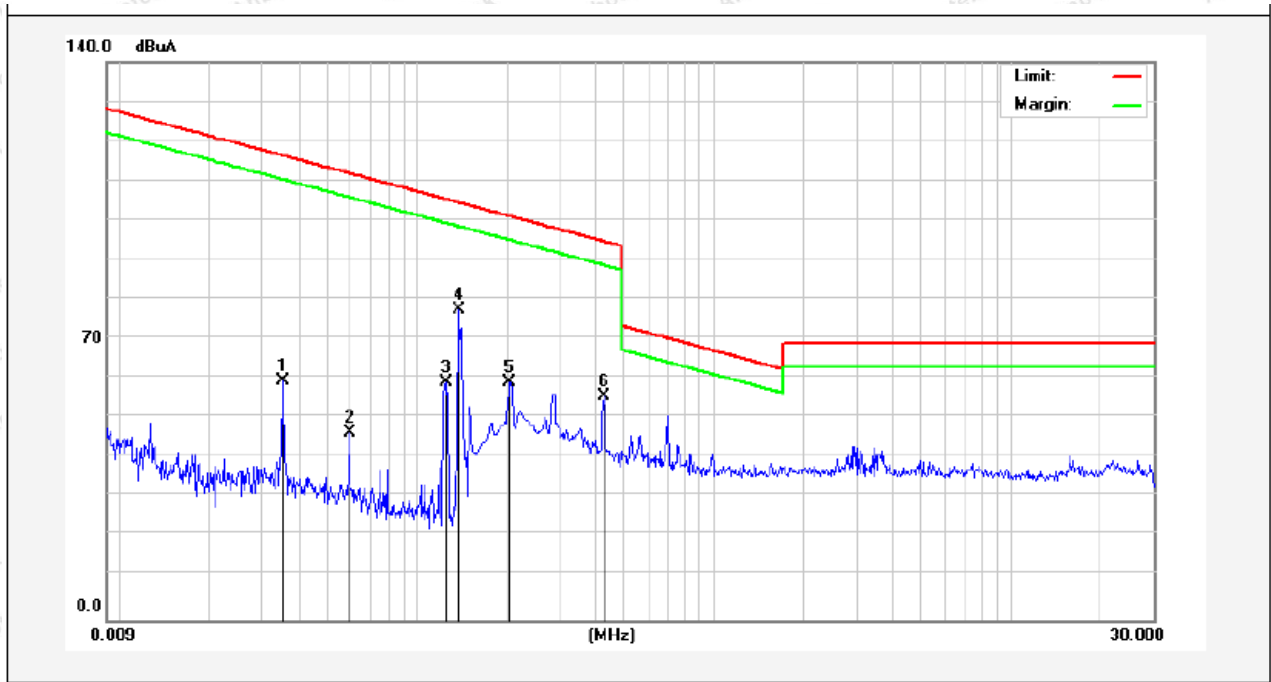
PASS

Note: The data is in TX mode, and this is the worst mode.

Test Results

(Between 9KHz – 30MHz)

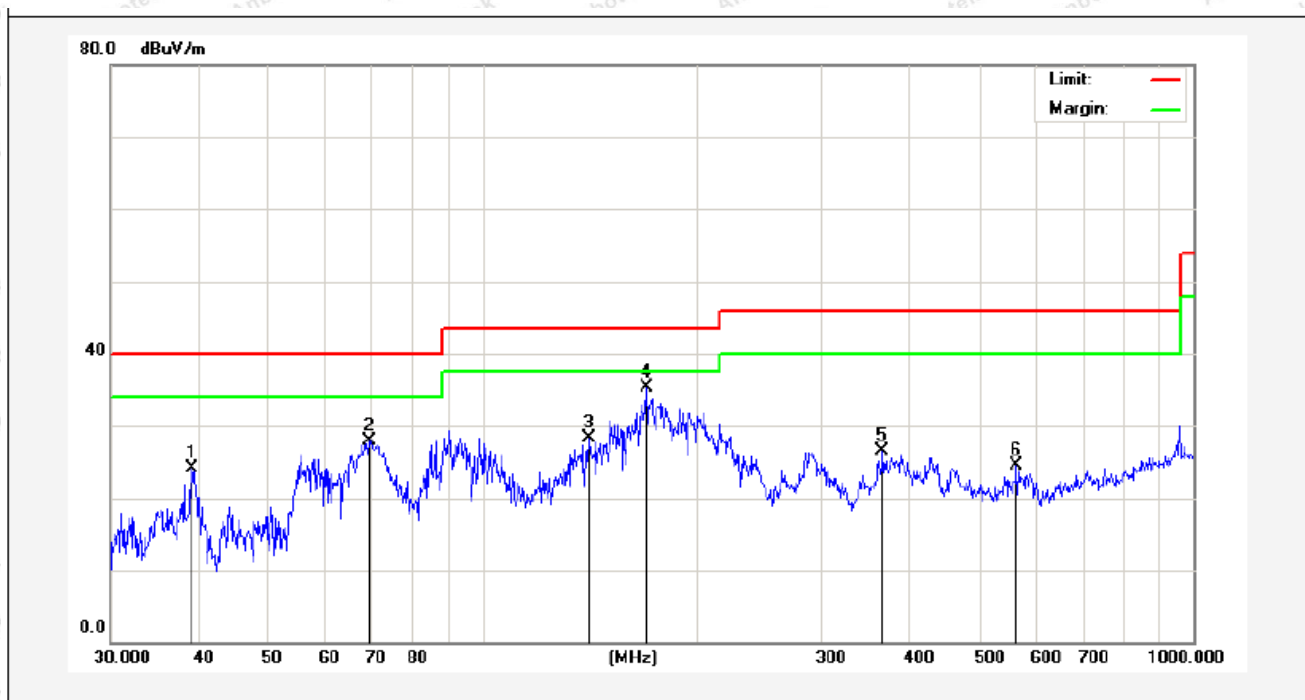
Job No.: SZAWW190601004-01
Standard: FCC PART15 C _3m **Power Source:** AC 120V, 60Hz for adapter
Test item: Radiation Test **Temp.(C)/Hum.(%RH):** 24.7°C/51%RH
Test Mode: Mode 1 **Distance:** 3m



Frequency (MHz)	Read Level (dBuV)	Antenna Factor (dB/m)	Cable Loss (dB)	Preamp Factor (dB)	Level (dBuV/m)	Limit (dBuV/m)	Over Limit (dB)	Detector	degree (dgc)
0.0352	50.52	19.28	2.53	0	72.33	136.55	-64.22	Peak	124
0.0352	38.27	19.28	2.53	0	60.08	116.55	-56.47	AV	124
0.0592	34.48	19.28	2.53	0	56.29	132.05	-75.76	Peak	308
0.0592	25.32	19.28	2.53	0	47.13	112.05	-64.92	AV	308
0.1247	48.10	19.53	2.59	0	70.22	125.62	-55.40	Peak	229
0.1247	37.42	19.53	2.59	0	59.54	105.62	-46.08	AV	229
0.1378	64.22	19.53	2.59	0	86.34	124.76	-38.42	Peak	62
0.1378	55.62	19.53	2.59	0	77.74	104.76	-27.02	AV	62
0.2058	48.01	19.53	2.59	0	70.13	121.29	-51.16	Peak	87
0.2058	37.06	19.53	2.59	0	59.18	101.29	-42.11	AV	87
0.4259	42.10	20.66	2.63	0	65.39	115.01	-49.62	Peak	248
0.4259	32.81	20.66	2.63	0	56.10	95.01	-38.91	AV	248

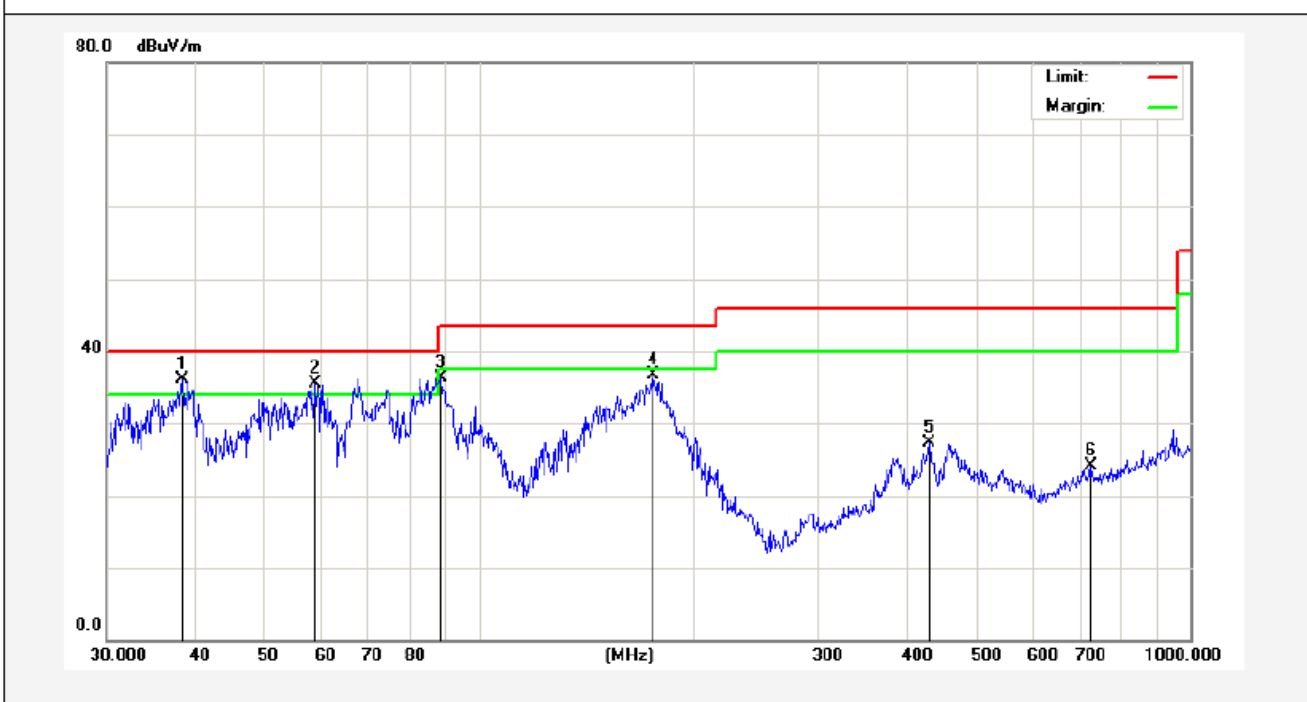
Remark: According to FCC PART 15.209 (d), the emission limits for the frequency bands 9–90 kHz, 110–490 kHz and above 1000 MHz, Radiated emission limits in these three bands are based on measurements employing an average detector.

Job No.:	SZAWW190601004-01	Polarization:	Horizontal
Standard:	FCC PART15 C_3m	Power Source:	DC 3.7V Battery inside
Test item:	Radiation Test	Temp.(C)/Hum.(%RH):	23.7°C/51%RH
Test Mode:	Mode 1	Distance:	3m



No.	Freq. (MHz)	Reading (dBuV)	Factor (dB/m)	Result (dBuV/m)	Limit (dBuV/m)	Over Limit (dB)	Detector	Height (cm)	degree (deg)	Remark
1	39.0245	41.84	-17.83	24.01	40.00	-15.99	QP	300	360	
2	69.3568	50.16	-22.20	27.96	40.00	-12.04	QP	300	320	
3	141.3298	51.72	-23.48	28.24	43.50	-15.26	QP	300	154	
4	170.1948	56.87	-21.50	35.37	43.50	-8.13	QP	300	155	
5	365.5391	41.27	-14.69	26.58	46.00	-19.42	QP	300	179	
6	564.6389	36.64	-12.20	24.44	46.00	-21.56	QP	300	257	

Job No.:	SZAWW190601004-01	Polarization:	Vertical
Standard:	FCC PART15 C_3m	Power Source:	DC 3.7V Battery inside
Test item:	Radiation Test	Temp.(C)/Hum.(%RH):	23.7°C/51%RH
Test Mode:	Mode 1	Distance:	3m



No.	Freq. (MHz)	Reading (dBUV)	Factor (dB/m)	Result (dBUV/m)	Limit (dBUV/m)	Over Limit (dB)	Detector	Height (cm)	degree (deg)	Remark
1	38.3462	53.02	-17.00	36.02	40.00	-3.98	QP	300	360	
2	59.0251	52.84	-17.34	35.50	40.00	-4.50	QP	300	320	
3	88.3421	55.79	-19.47	36.32	43.50	-7.18	QP	300	222	
4	176.2686	54.73	-18.05	36.68	43.50	-6.82	QP	300	195	
5	429.5228	39.80	-12.55	27.25	46.00	-18.75	QP	300	154	
6	724.2611	32.67	-8.65	24.02	46.00	-21.98	QP	300	55	

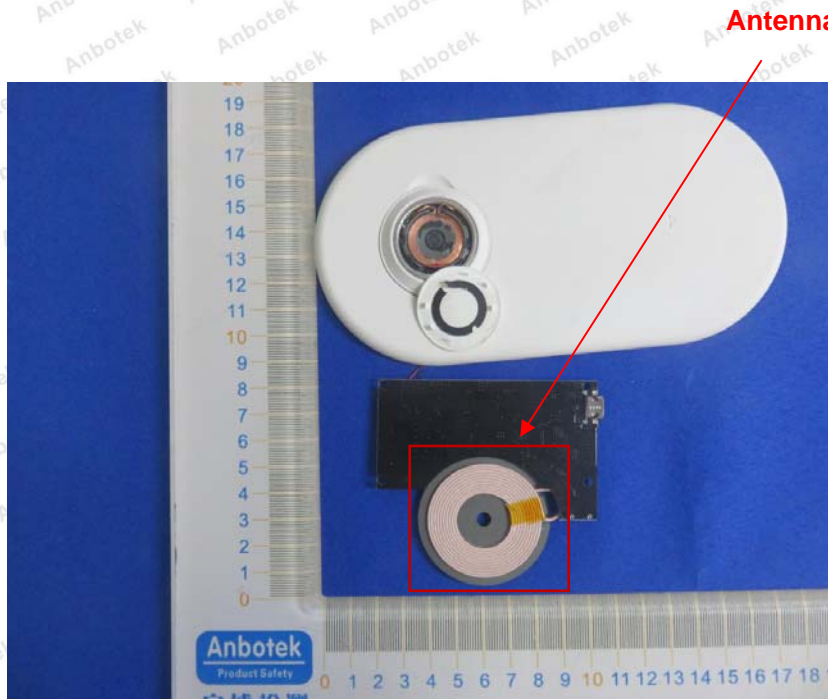
5. Antenna Requirement

5.1. Test Standard and Requirement

Test Standard	FCC Part15 Section 15.203
Requirement	An intentional radiator shall be designed to ensure that no antenna other than that furnished by the responsible party shall be used with the device. The use of a permanently attached antenna or of an antenna that uses a unique coupling to the intentional radiator, the manufacturer may design the unit so that a broken antenna can

5.2. Antenna Connected Construction

The antenna is a Inductive loop coil Antenna which permanently attached, and the best case gain of the antenna is 0 dBi. It complies with the standard requirement.



APPENDIX I -- TEST SETUP PHOTOGRAPH

Photo of Conducted Emission Measurement



Photo of Radiation Emission Test





APPENDIX II -- EXTERNAL PHOTOGRAPH

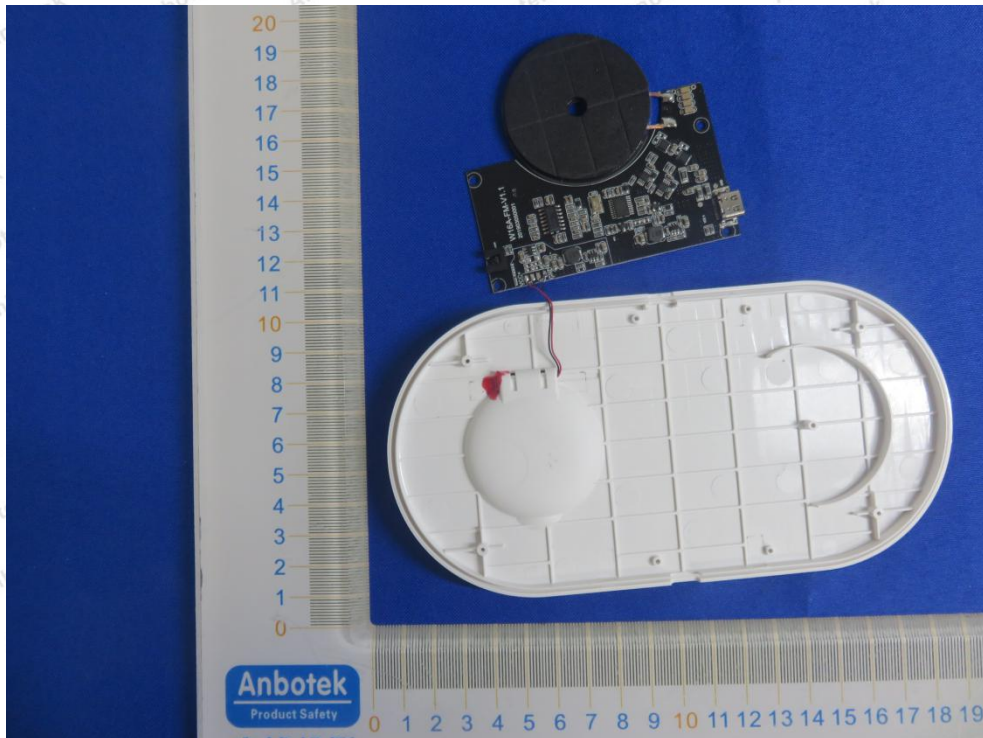
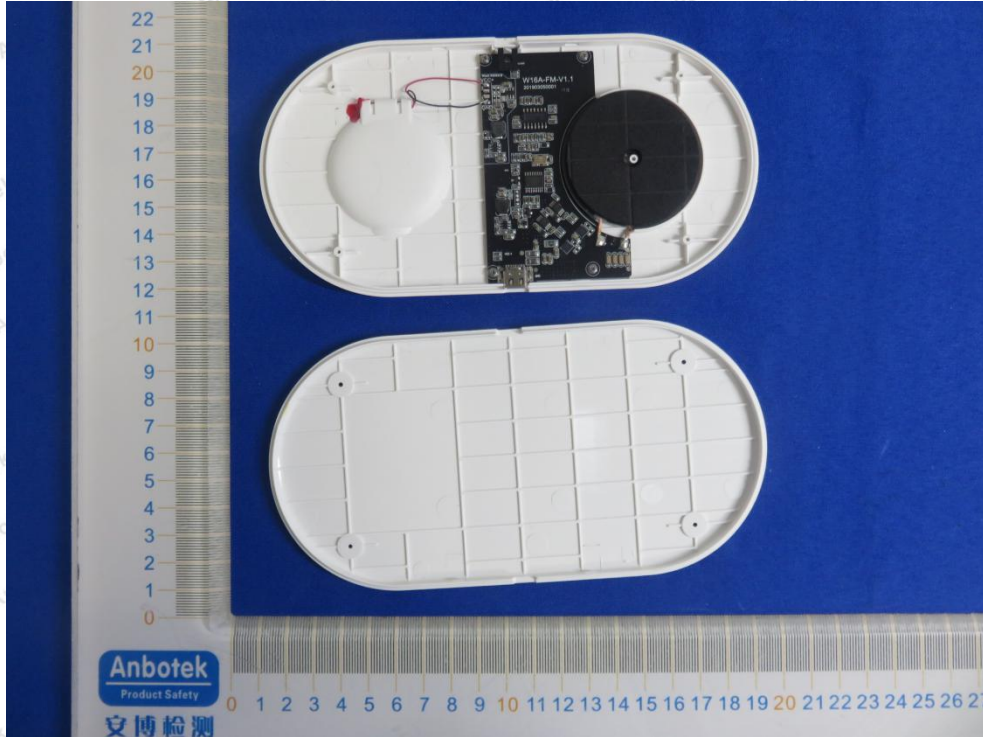


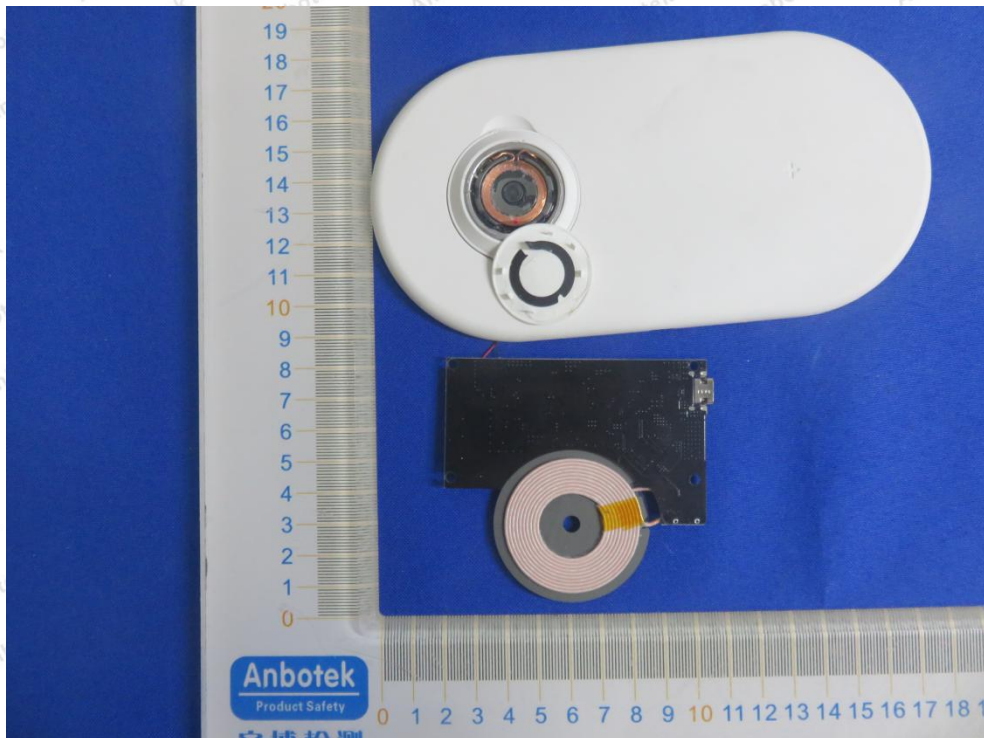
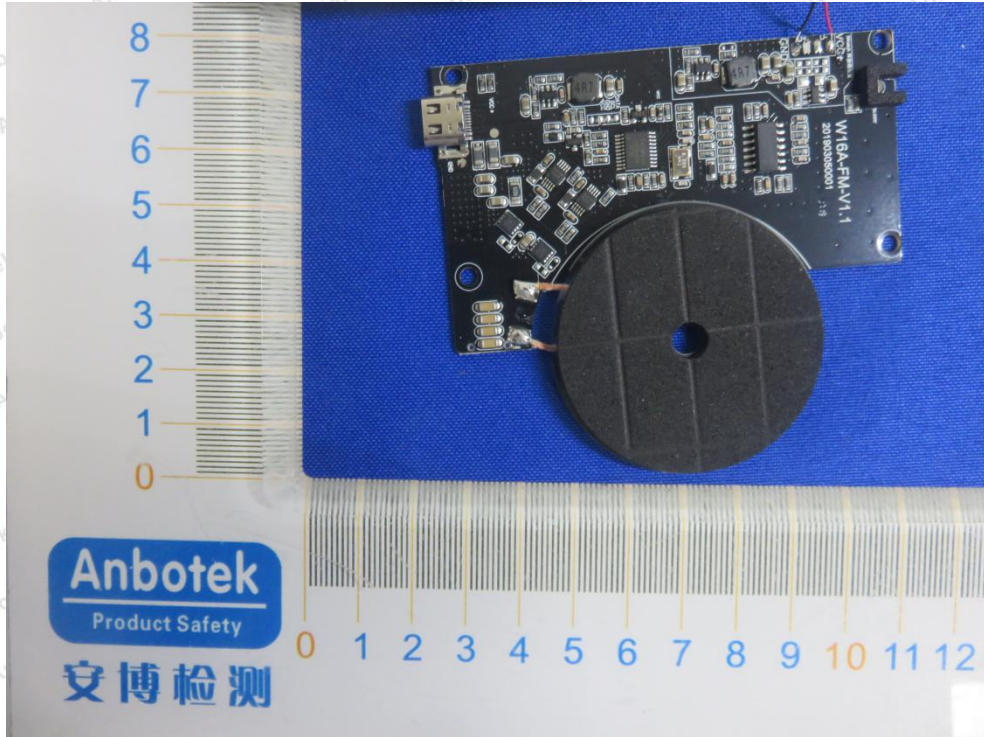


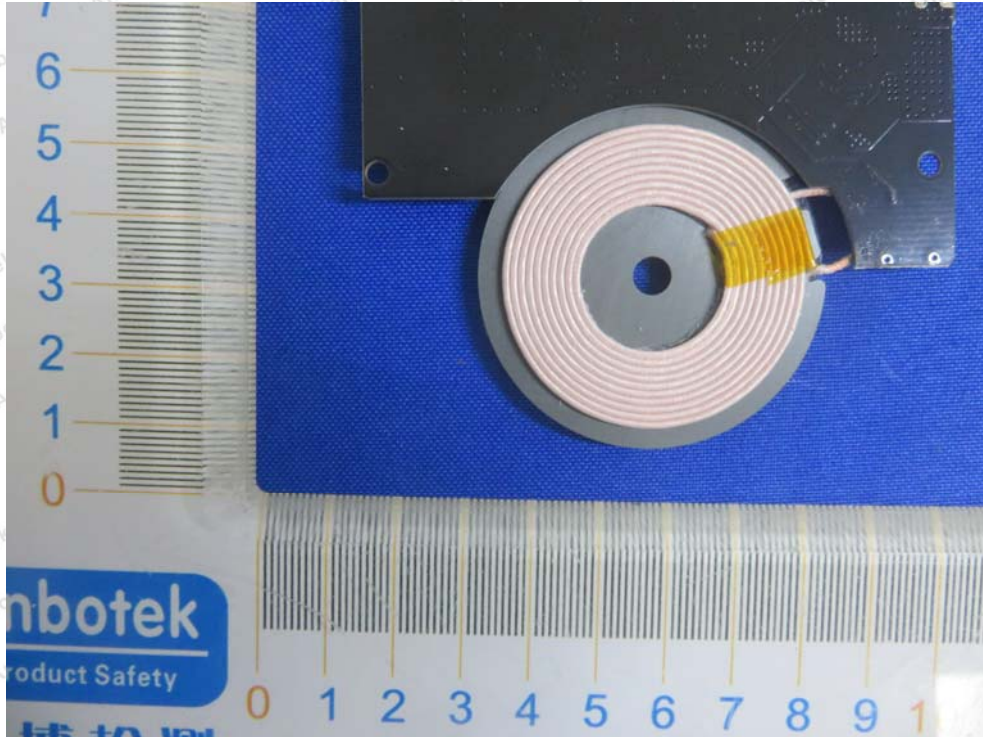


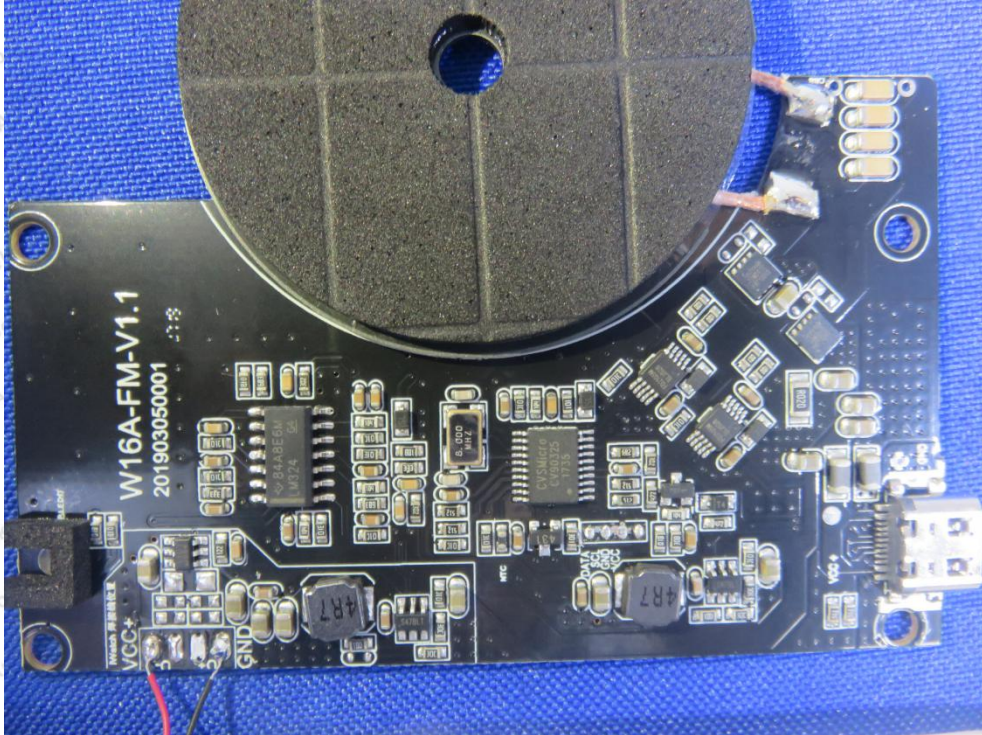


APPENDIX III -- INTERNAL PHOTOGRAPH









----- End of Report -----