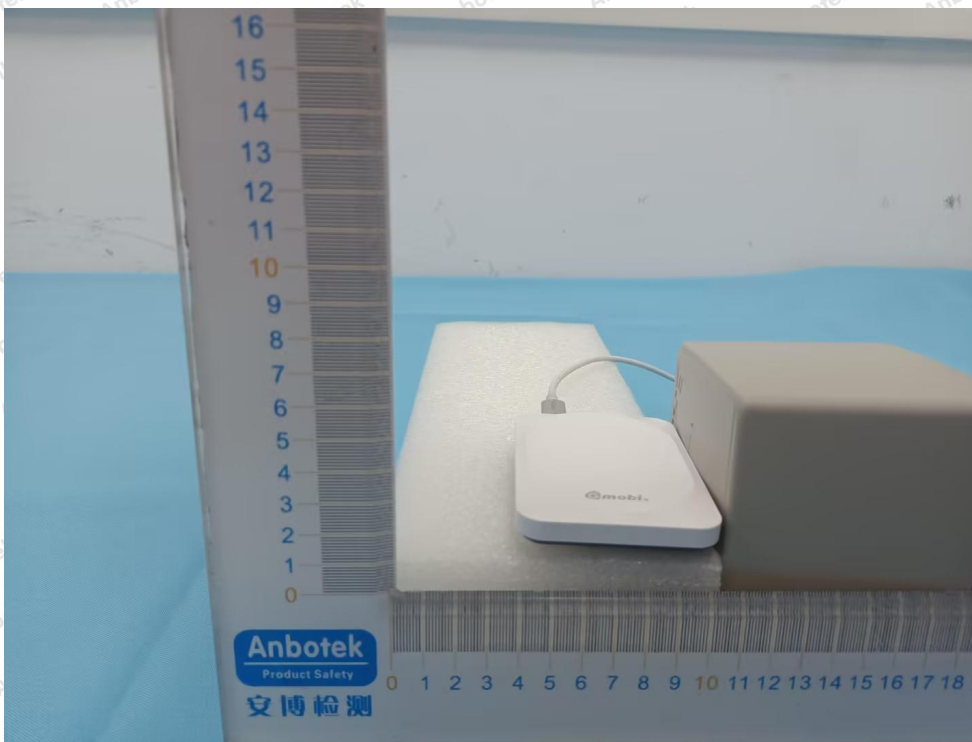
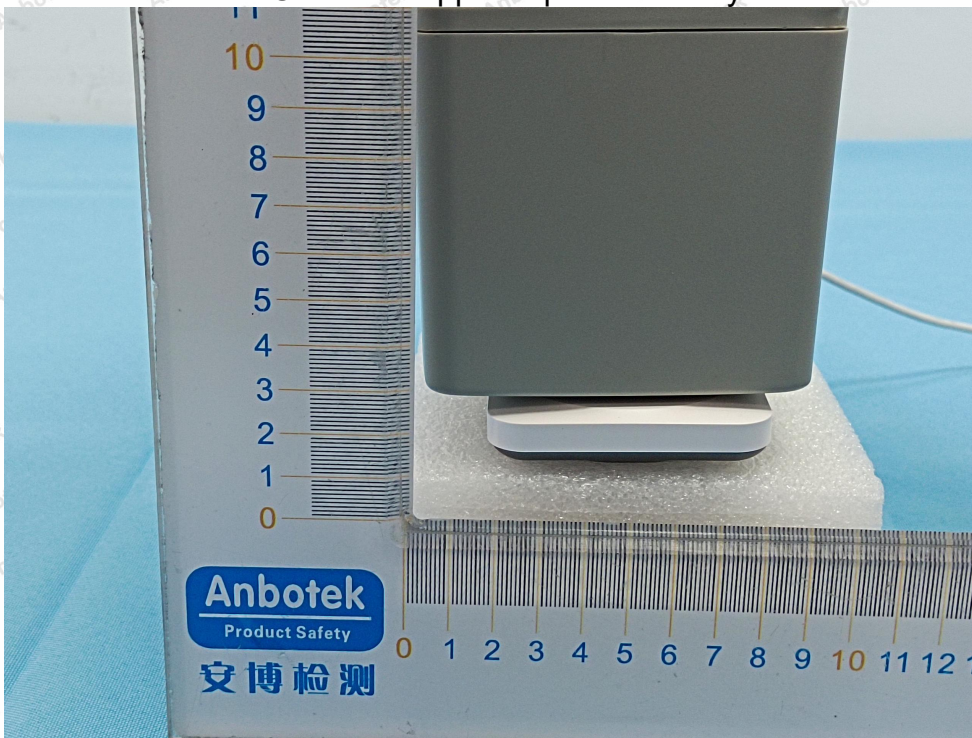


Test Setup Photograph EUT Base support input + Standby



Anbotek

Product Safety



Shenzhen Anbotek Compliance Laboratory Limited

Address: 1/F., Building D, Sogood Science and Technology Park, Sanwei Community, Hangcheng Street, Bao'an District, Shenzhen, Guangdong, China.
Tel: (86) 0755-26066440 Fax: (86) 0755-26014772 Email: service@anbotek.com

Code: AB-RF-05-b

Hotline
400-003-0500
www.anbotek.com.cn



EUT Base support input + iPhone 12 operating (10% electric quantity)
0,2,4 cm

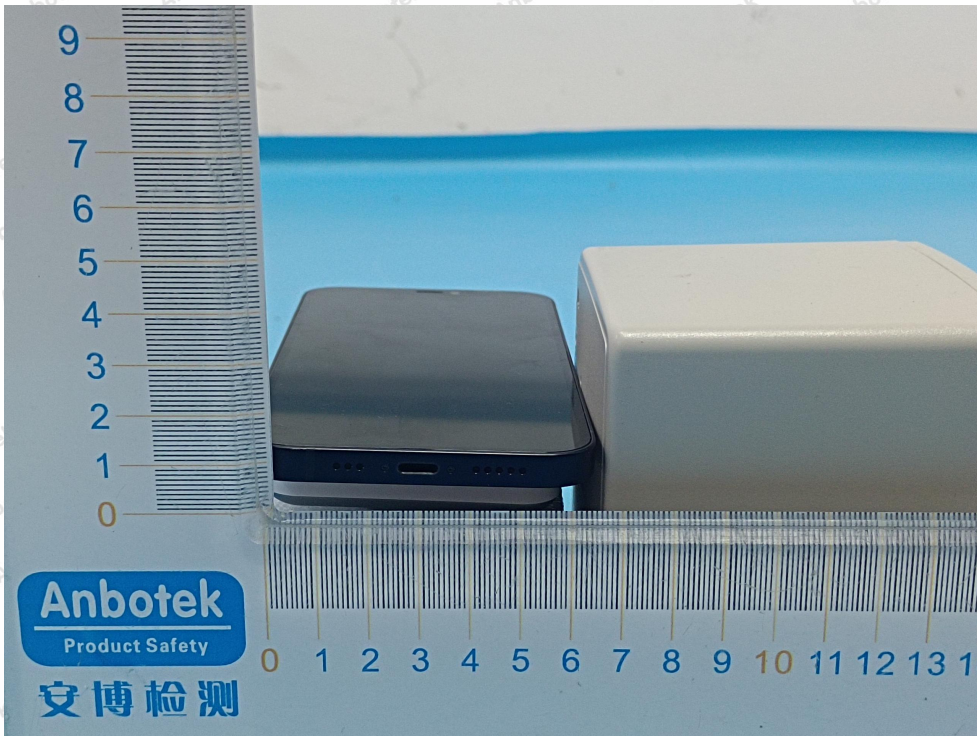
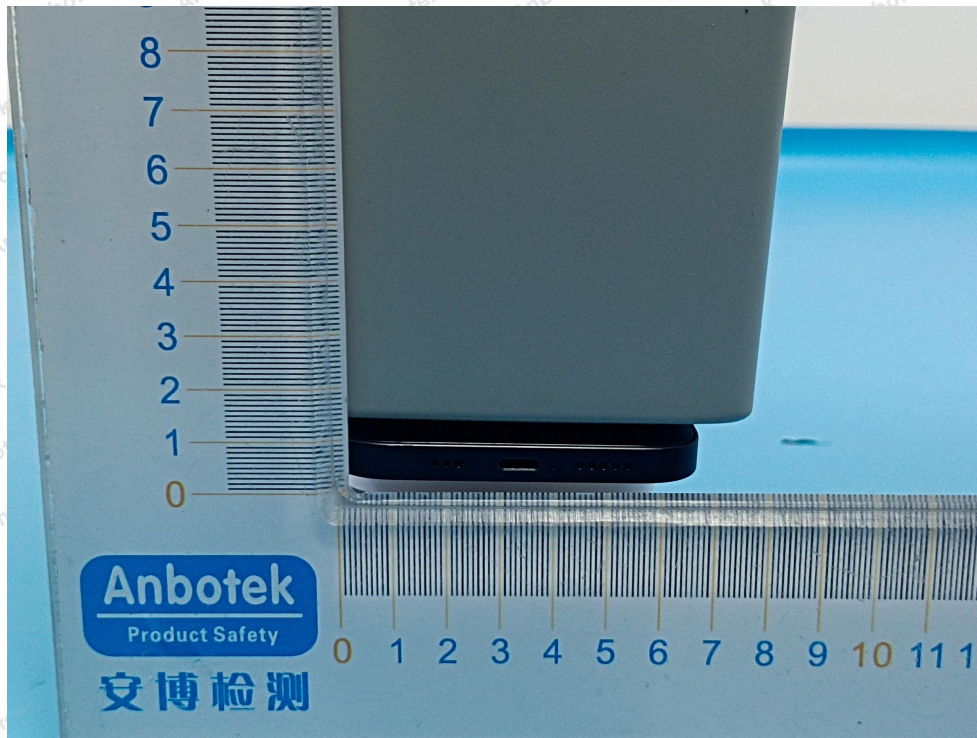


Photo of MPE Measurement at 6 cm

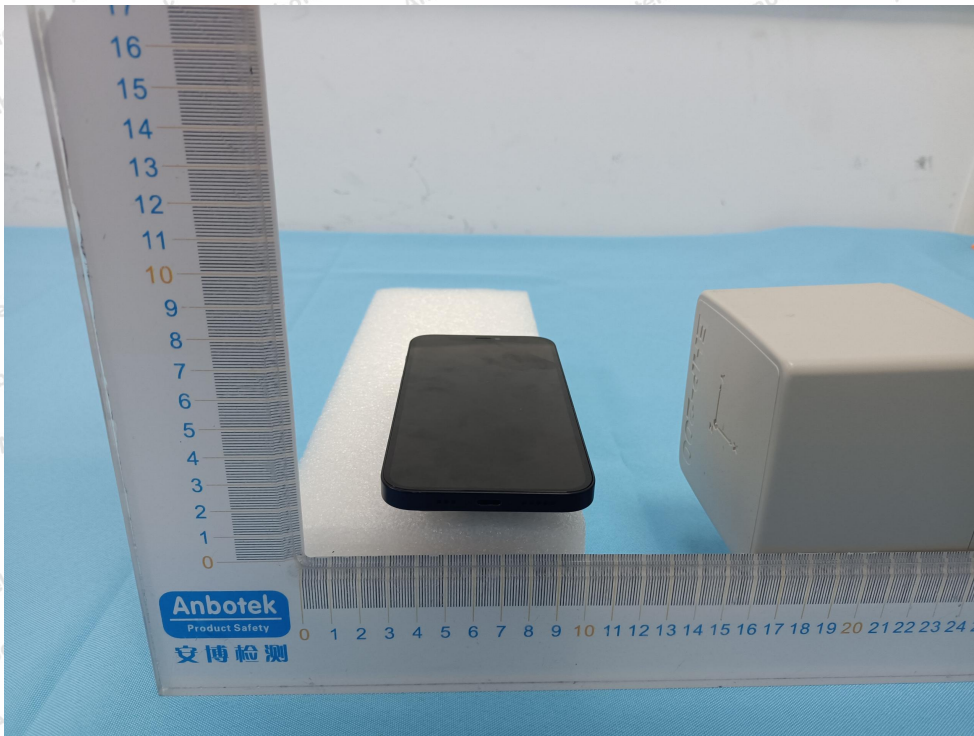


Photo of MPE Measurement at 8 cm

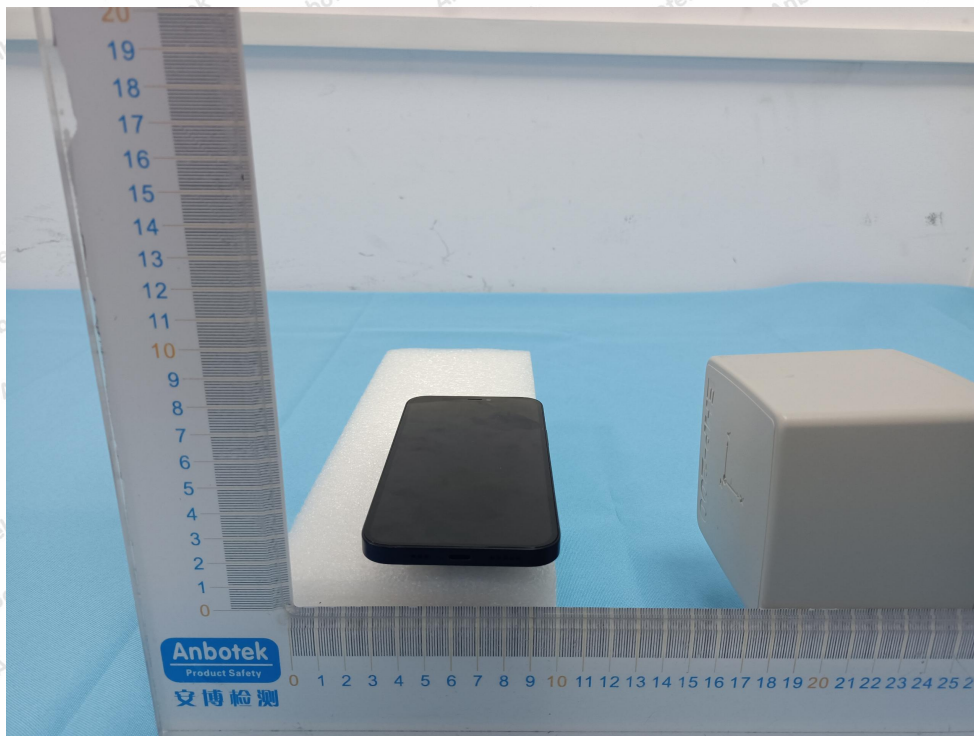
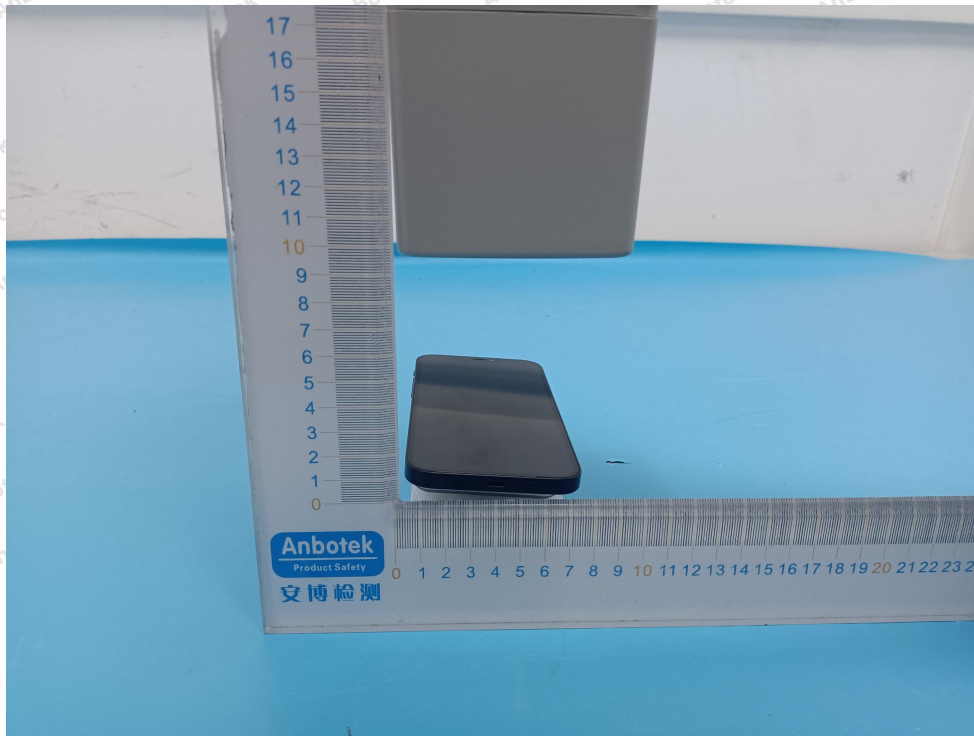


Photo of MPE Measurement at 10 cm

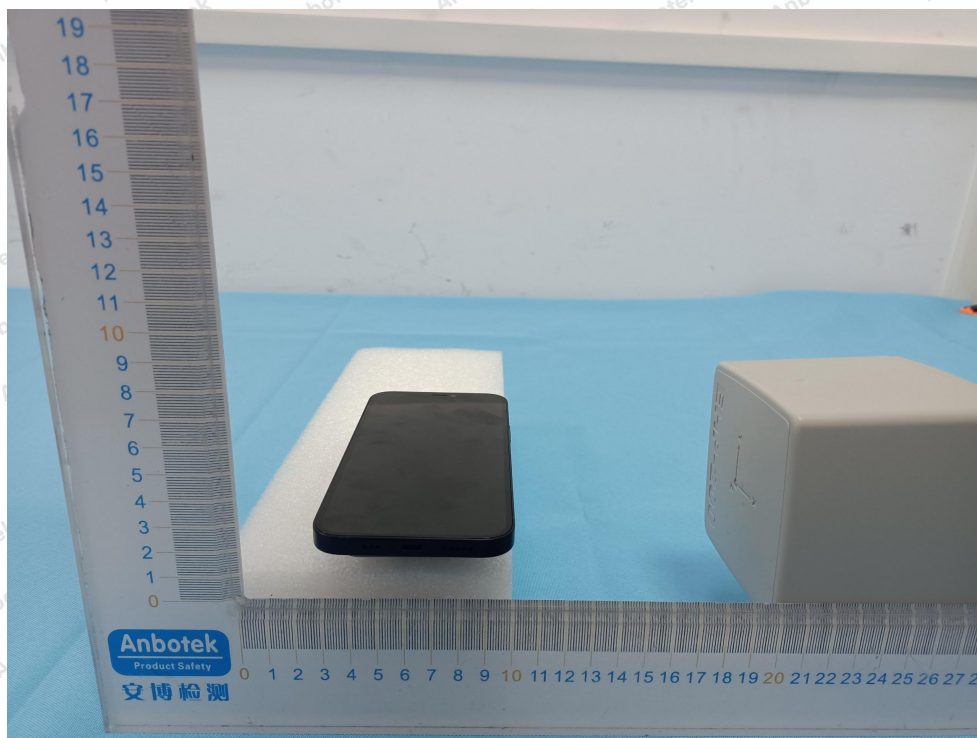
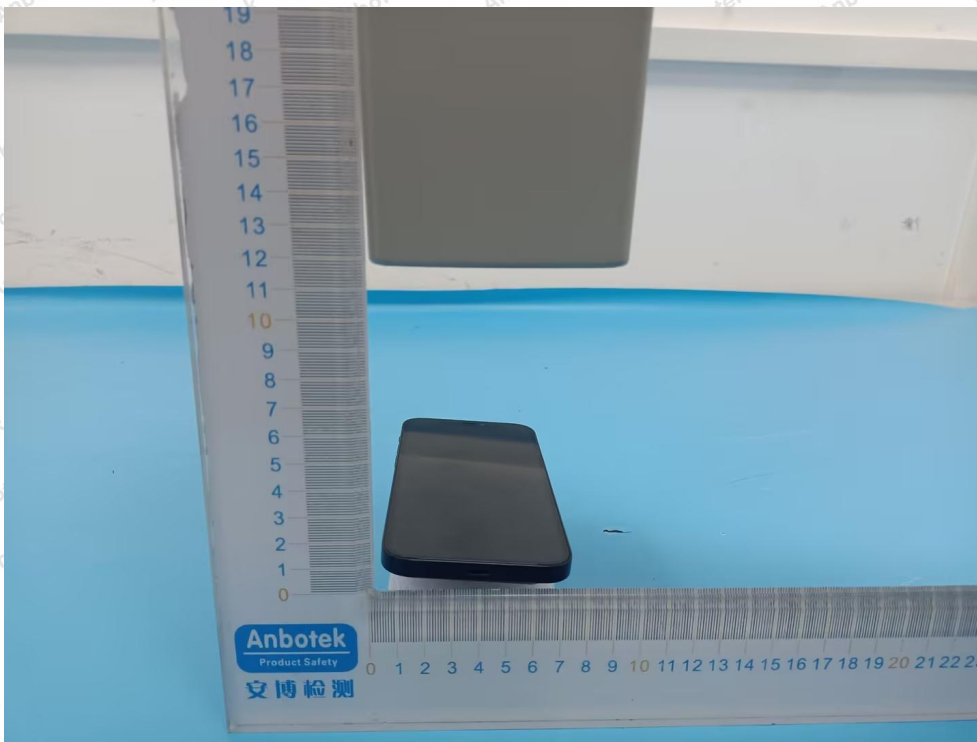


Photo of MPE Measurement at 12 cm

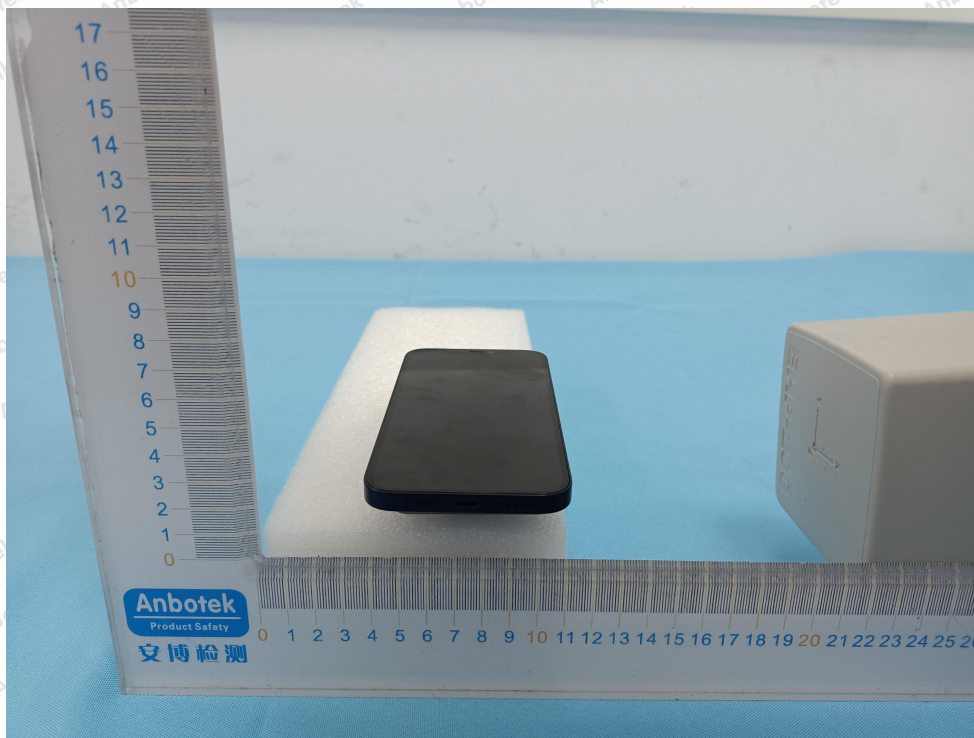
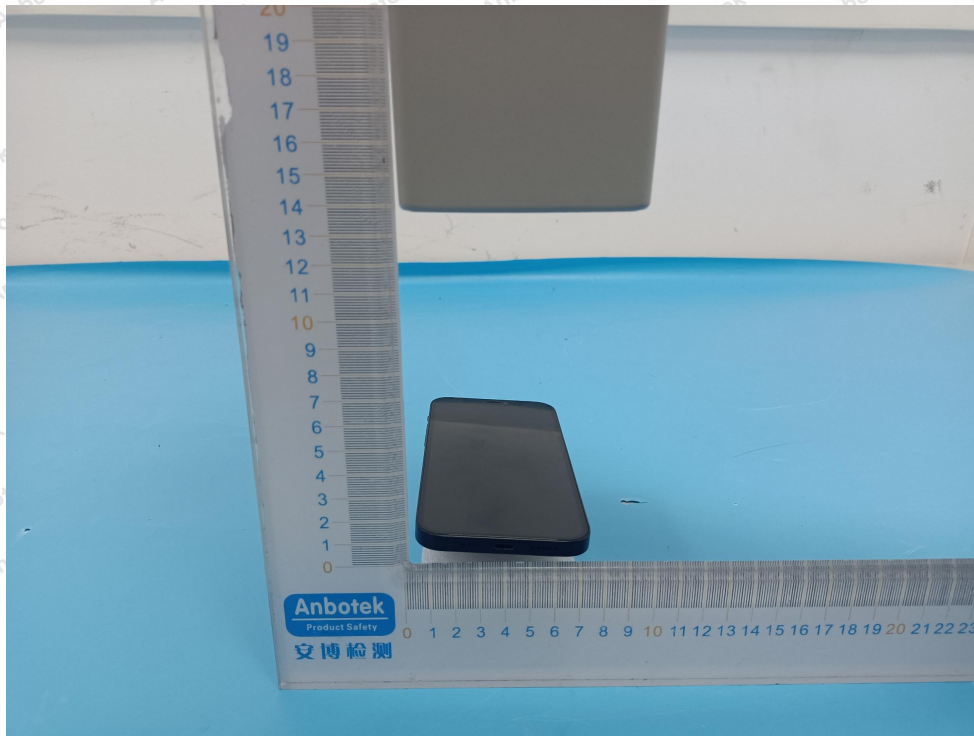


Photo of MPE Measurement at 14 cm

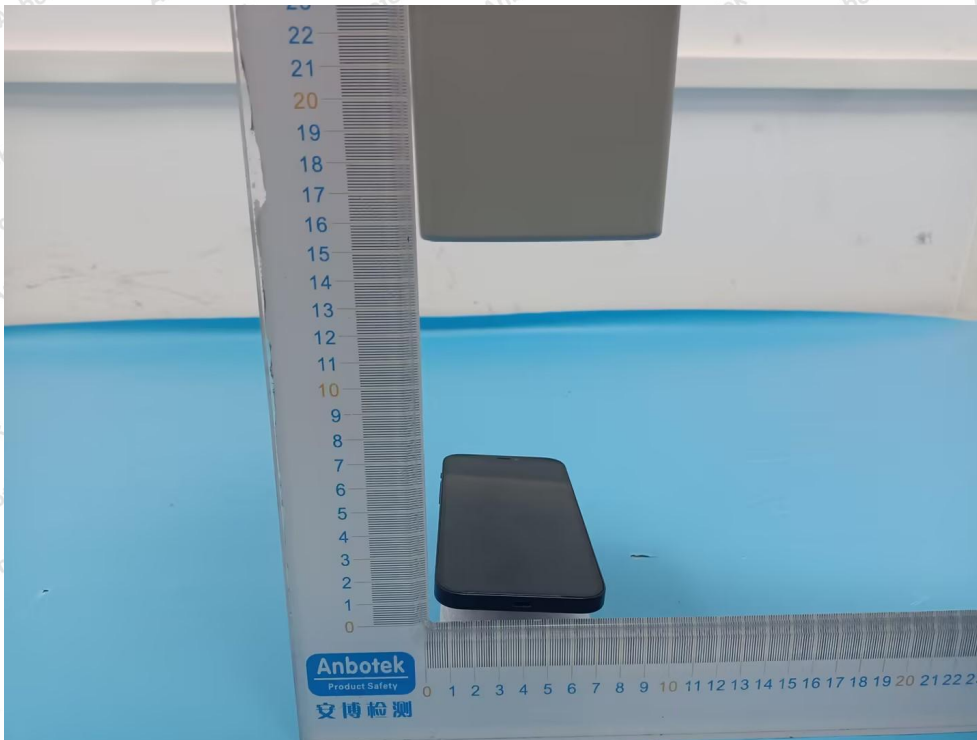


Photo of MPE Measurement at 16 cm

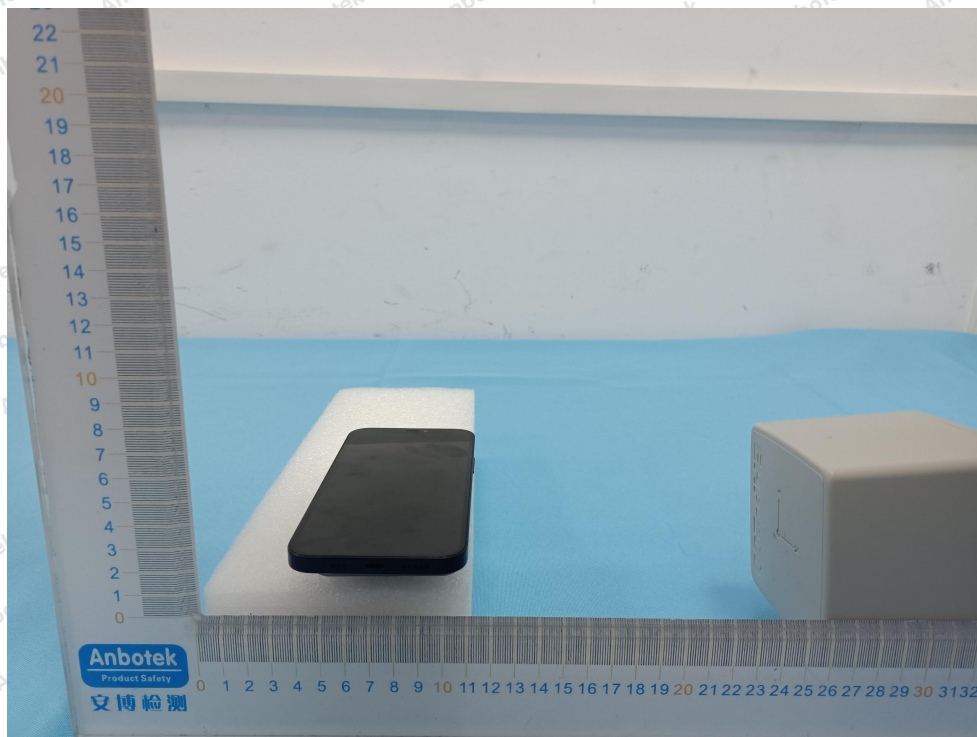
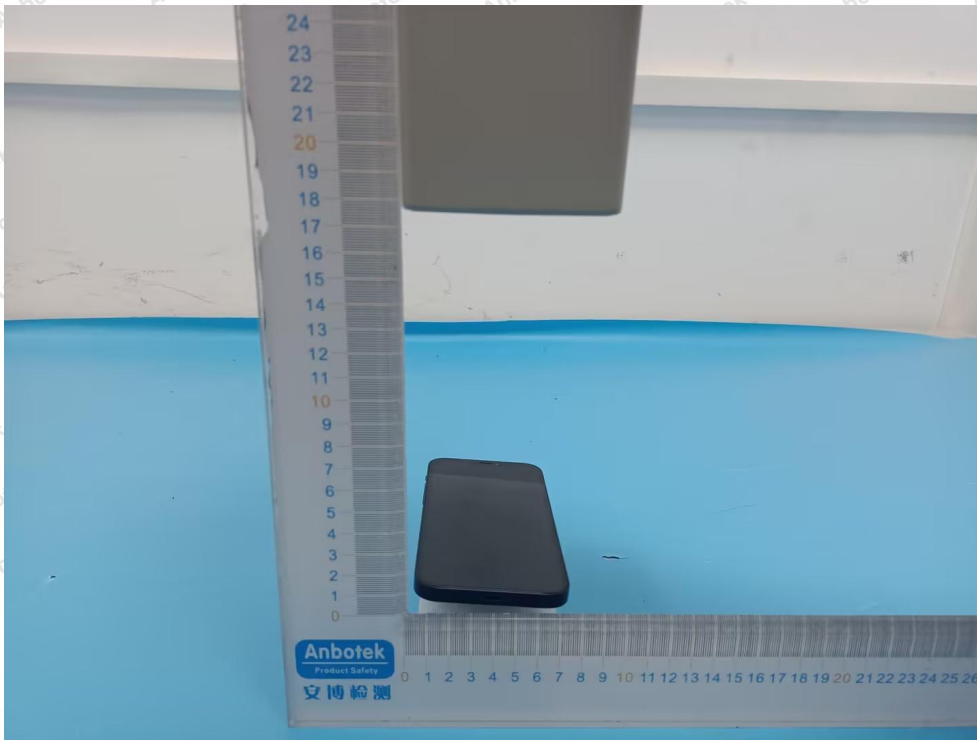


Photo of MPE Measurement at 18 cm

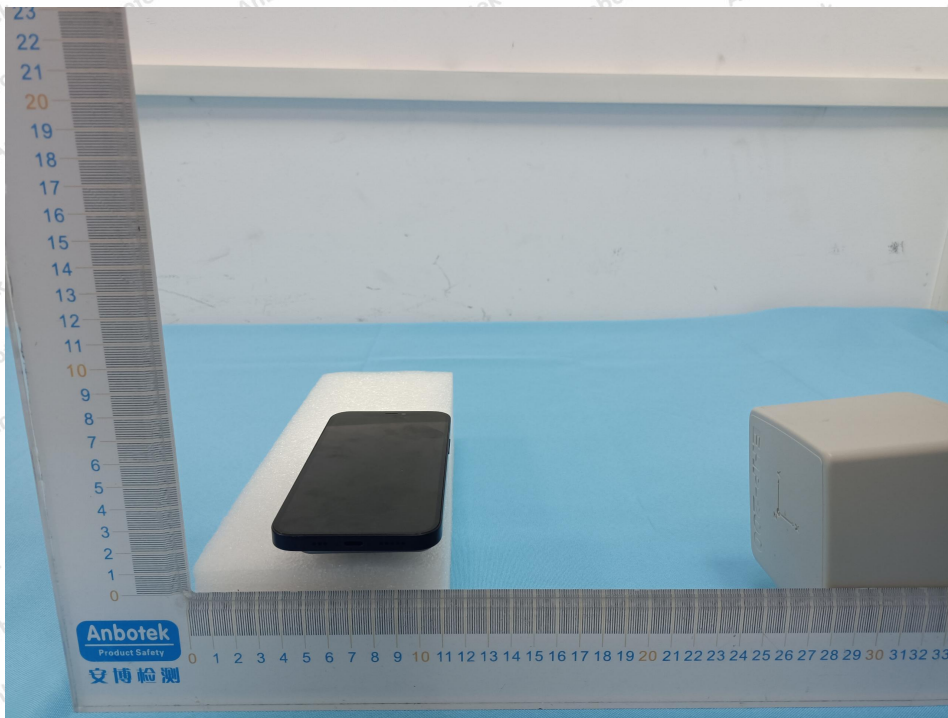
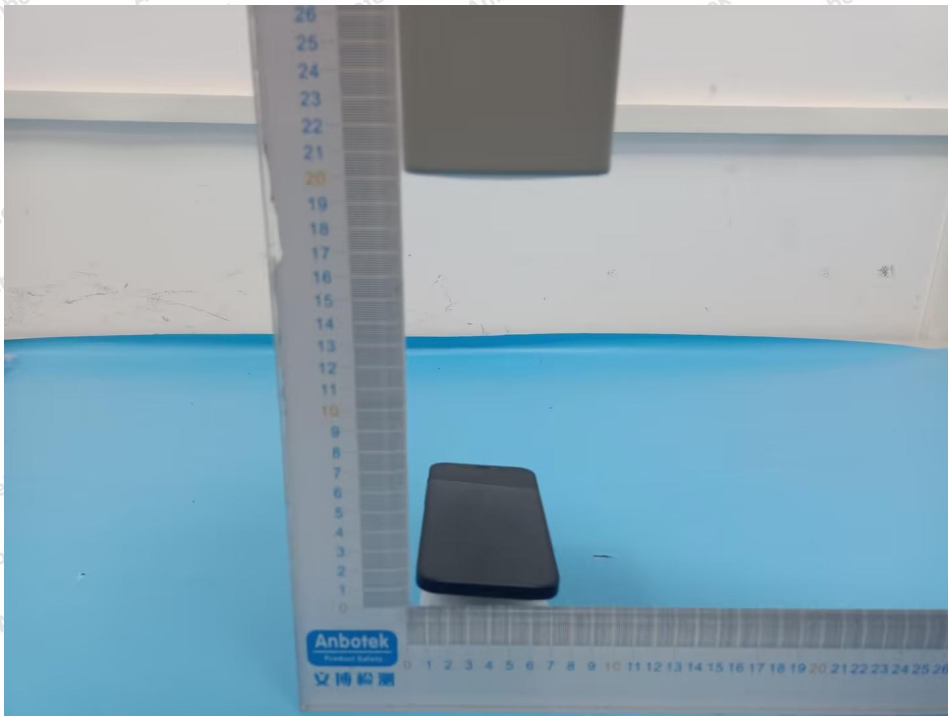


Photo of MPE Measurement at 20 cm

