

FCC TEST REPORT

Client Name : Gopod Group Limited
Address : 6/F,235 Wing Lok Trade Centre,Sheung Wan,Hong Kong
Product Name : 2-in-1 Wireless Charging Stand with MagSafe
Date : Mar. 24, 2022



Shenzhen Anbotek Compliance Laboratory Limited

Contents

1. General Information.....	4
1.1. Client Information.....	4
1.2. Description of Device (EUT).....	4
1.3. Auxiliary Equipment Used During Test.....	5
1.4. Description of Test Modes.....	5
1.5. Description Of Test Setup.....	6
1.6. Test Equipment List.....	7
1.7. Measurement Uncertainty.....	8
1.8. Description of Test Facility.....	8
2. Summary of Test Results.....	9
3. Conducted Emission Test.....	10
3.1. Test Standard and Limit.....	10
3.2. Test Setup.....	10
3.3. Test Procedure.....	10
3.4. Test Data.....	10
4. Radiation Spurious Emission and Band Edge.....	15
4.1. Test Standard and Limit.....	15
4.2. Test Setup.....	15
4.3. Test Procedure.....	16
4.4. Test Data.....	16
5. Antenna Requirement.....	21
5.1. Test Standard and Requirement.....	21
5.2. Antenna Connected Construction.....	21
APPENDIX I -- TEST SETUP PHOTOGRAPH.....	22
APPENDIX II -- EXTERNAL PHOTOGRAPH.....	24
APPENDIX III -- INTERNAL PHOTOGRAPH.....	27

TEST REPORT

Applicant : Gopod Group Limited
Manufacturer : Gopod Group Holding Limited
Product Name : 2-in-1 Wireless Charging Stand with MagSafe
Model No. : D461E, D461E1, D461E2, D461E3
Trade Mark : Gmobi
Rating(s) : Input: 5V/3A, 9V/3A, 12V/3A, 15/2.5A
Wireless Output 1: 5W/7.5W/15W
Wireless Output 2: 5W
Total power: 20W Max
Test Standard(s) : **FCC Part15 Subpart C, Paragraph 15.209**
Test Method(s) : **ANSI C63.10: 2020**

The device described above is tested by Shenzhen Anbotek Compliance Laboratory Limited to determine the maximum emission levels emanating from the device and the severe levels of the device can endure and its performance criterion. The measurement results are contained in this test report and Shenzhen Anbotek Compliance Laboratory Limited is assumed full of responsibility for the accuracy and completeness of these measurements. Also, this report shows that the EUT (Equipment Under Test) is technically compliant with the FCC Part 15 Subpart C requirements.

This report applies to above tested sample only and shall not be reproduced in part without written approval of Shenzhen Anbotek Compliance Laboratory Limited.

Date of Receipt

Feb. 16, 2022

Date of Test

Feb. 16~Mar. 01, 2022

Prepared By



(TuTu Hong)

Approved & Authorized Signer



(Kingkong Jin)

1. General Information

1.1. Client Information

Applicant	:	Gopod Group Limited
Address	:	6/F,235 Wing Lok Trade Centre,Sheung Wan,Hong Kong
Manufacturer	:	Gopod Group Holding Limited
Address	:	4/F,5/F,6/F of Building#8,1/F of Building#3,4/F of Building#6,Unlbuilt Science and Technology Industrial Park,Huarong Road,HengLang Community Dalang Street,LongHua District, Shenzhen
Factory	:	Gopod Group Holding Limited
Address	:	4/F,5/F,6/F of Building#8,1/F of Building#3,4/F of Building#6,Unlbuilt Science and Technology Industrial Park,Huarong Road,HengLang Community Dalang Street,LongHua District, Shenzhen

1.2. Description of Device (EUT)

Product Name	:	2-in-1 Wireless Charging Stand with MagSafe	
Model No.	:	D461E, D461E1, D461E2, D461E3 (Note: All samples are the same except the model number, so we prepare "D461E" for test only.)	
Trade Mark	:	Gmobi	
Test Power Supply	:	AC 120V, 60Hz for adapter / AC 240V, 60Hz for adapter	
Test Sample No.	:	1-2-1(Normal Sample), 1-2-2(Engineering Sample)	
Product Description	:	Operation Frequency:	Wireless 1: 127.7KHz (7.5W); 360 KHz (15W) Wireless 2: 127.7KHz (5W)
		Modulation Type:	FSK
		Antenna Type:	Inductive loop coil Antenna
		Antenna Gain(Peak):	0 dBi
Remark: 1) For a more detailed features description, please refer to the manufacturer's specifications or the User's Manual.2)The frequencies 127.7KHz and 360KHz do not support simultaneous transmission.			

1.3. Auxiliary Equipment Used During Test

Adapter	:	M/N:AD651P Input: AC 100-240V, 1.5A, 50-60Hz Output: DC 5V3A,DC 9V3A,DC 10V5A,DC 12V3A,DC 15V3A,DC 20V3.25A
Wireless charging load	:	Manufacturer: Shenzhen Ouju Technology Co., Ltd. M/N: CD2577 Power: 5W/7.5W/10W/15W Last Cal.: Oct. 26, 2020 Cal. Interval: 1 Year
Mobile Phone	:	iPhone 12

1.4. Description of Test Modes

To investigate the maximum EMI emission characteristics generates from EUT, the test system was pre-scanning tested base on the consideration of following EUT operation mode or test configuration mode which possible have effect on EMI emission level. Each of these EUT operation mode(s) or test configuration mode(s) mentioned above was evaluated respectively.

Pretest Mode	Description
Mode 1	Wireless Charging Mode (Phone 15W)
Mode 2	Wireless Charging Mode (Wireless Load 5W)
Mode 3	Wireless Charging Mode (Phone+ Wireless Load 20W)

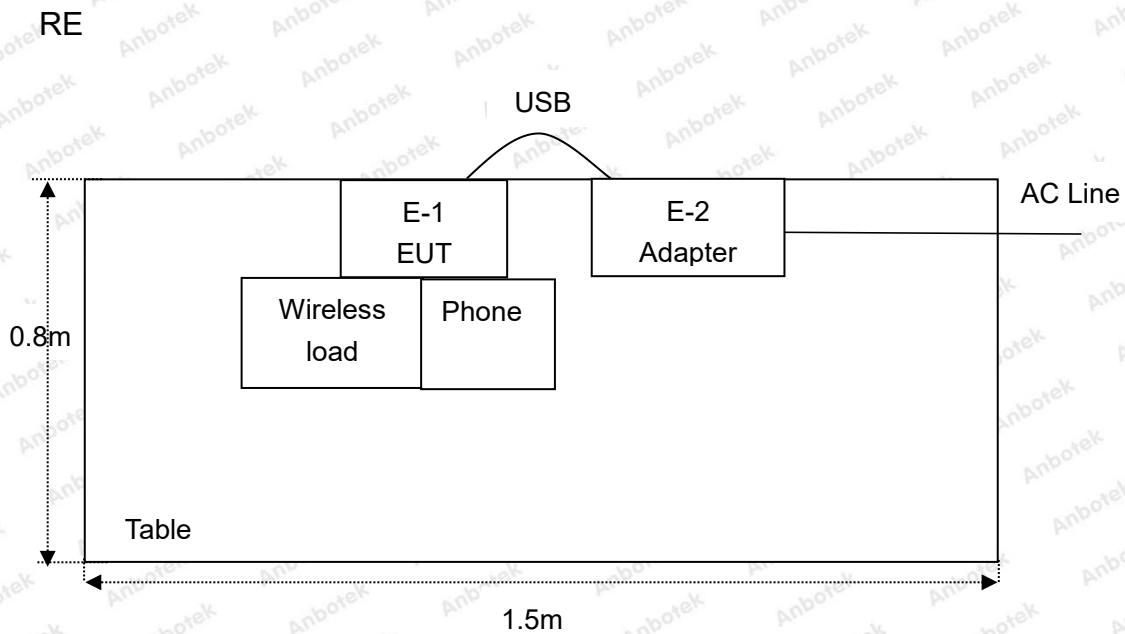
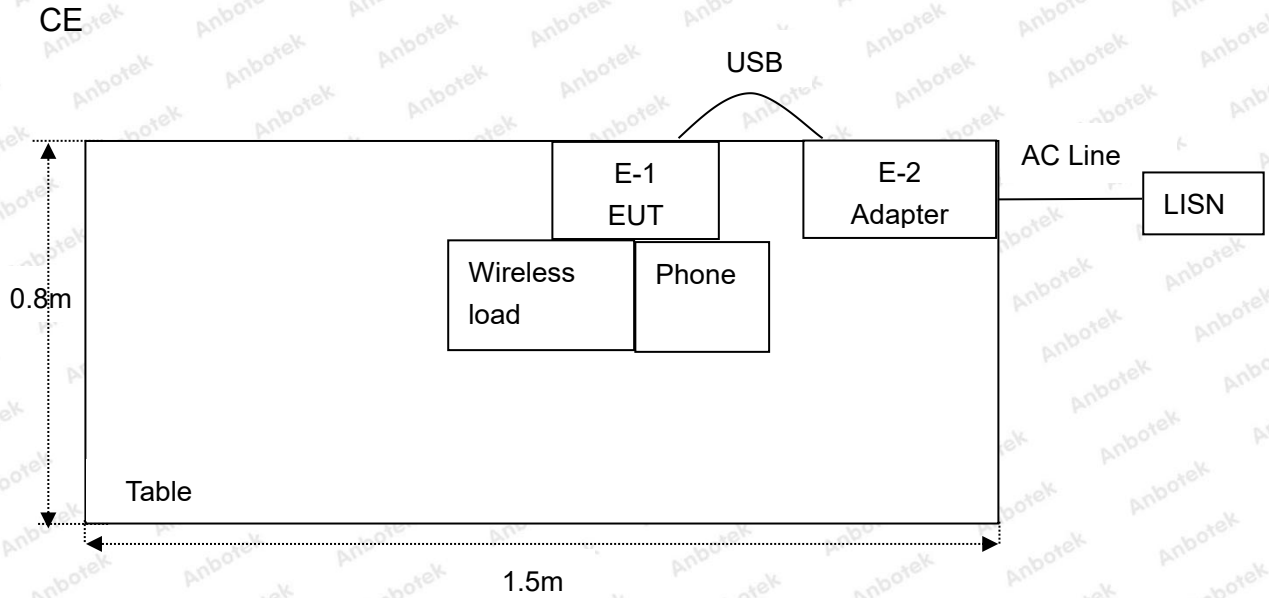
For Conducted Emission	
Final Test Mode	Description
Mode 1	Wireless Charging Mode (Phone 15W)
Mode 2	Wireless Charging Mode (Wireless Load 5W)
Mode 3	Wireless Charging Mode (Phone+ Wireless Load 20W)

For Radiated Emission	
Final Test Mode	Description
Mode 1	Wireless Charging Mode (Phone 15W)
Mode 2	Wireless Charging Mode (Wireless Load 5W)
Mode 3	Wireless Charging Mode (Phone+ Wireless Load 20W)

Note: (1)Test channel is 0.1277MHz, 0.360MHz.

(2)All the situation(full load, half load and empty load) has been tested,only the worst situation (full load: Phone+Wireless Load 20W) was recorded in the report.

1.5. Description Of Test Setup



1.6. Test Equipment List

Item	Equipment	Manufacturer	Model No.	Serial No.	Last Cal.	Cal. Interval
1.	Three Phase V-type Artificial Power Network	CYBERTEK	EM5040DT	E215040DT001	Jul 05, 2021	1 Year
2.	EMI Test Receiver	Rohde & Schwarz	ESCI	100627	Oct. 22, 2021	1 Year
3.	EMI Test Receiver	Rohde & Schwarz	ESR26	101481	Oct. 22, 2021	1 Year
4.	RF Switching Unit	Compliance Direction	RSU-M2	38303	Oct. 22, 2021	1 Year
5.	MAX Spectrum Analysis	Agilent	N9020A	MY51170037	Oct. 22, 2021	1 Year
6.	Preamplifier	SKET Electronic	BK1G18G30 D	KD17503	Oct. 22, 2021	1 Year
7.	Double Ridged Horn Antenna	Instruments corporation	GTH-0118	351600	Oct. 22, 2021	2 Year
8.	Bilog Broadband Antenna	Schwarzbeck	VULB9163	VULB 9163-289	Oct. 22, 2021	2 Year
9.	Loop Antenna	Schwarzbeck	FMZB1519B	00053	Oct. 22, 2021	2 Year
10.	Horn Antenna	A-INFO	LB-180400-K F	J211060628	Oct. 22, 2021	2 Year
11.	Pre-amplifier	SONOMA	310N	186860	Oct. 22, 2021	1 Year
12.	EMI Test Software EZ-EMC	SHURPLE	N/A	N/A	N/A	N/A
13.	RF Test Control System	YIHENG	YH3000	2017430	Oct. 22, 2021	1 Year
14.	Power Sensor	DAER	RPR3006W	15100041SN045	Oct. 22, 2021	1 Year
15.	Power Sensor	DAER	RPR3006W	15100041SN046	Oct. 22, 2021	1 Year
16.	MXA Spectrum Analysis	KEYSIGHT	N9020A	MY53280032	Oct. 22, 2021	1 Year
17.	MXG RF Vector Signal Generator	Agilent	N5182A	MY48180656	Oct. 22, 2021	1 Year
18.	Signal Generator	Agilent	E4421B	MY41000743	Oct. 22, 2021	1 Year
19.	DC Power Supply	IVYTECH	IV3605	1804D360510	Oct. 22, 2021	1 Year
20.	Constant Temperature Humidity Chamber	ZHONGJIAN	ZJ-KHWS80 B	N/A	Oct. 22, 2021	1 Year

1.7. Measurement Uncertainty

Radiation Uncertainty	:	Ur = 3.9 dB (Horizontal)
	:	Ur = 3.8 dB (Vertical)
Conduction Uncertainty	:	Uc = 3.4 dB

1.8. Description of Test Facility

The test facility is recognized, certified, or accredited by the following organizations:

FCC-Registration No.: 184111

Shenzhen Anbotek Compliance Laboratory Limited, EMC Laboratory has been registered and fully described in a report filed with the (FCC) Federal Communications Commission. The acceptance letter from the FCC is maintained in our files. Registration No. 184111.

ISED-Registration No.: 8058A

Shenzhen Anbotek Compliance Laboratory Limited, EMC Laboratory has been registered and fully described in a report filed with the (ISED) Innovation, Science and Economic Development Canada. The acceptance letter from the ISED is maintained in our files. Registration 8058A.

Test Location

Shenzhen Anbotek Compliance Laboratory Limited.

1/F, Building D, Sogood Science and Technology Park, Sanwei community, Hangcheng Street, Bao'an District, Shenzhen, Guangdong, China.518102

2. Summary of Test Results

Standard Section	Test Item	Result
FCC Part 15, Paragraph 15.207	Conducted Emission Test	PASS
FCC Part 15, Paragraph 15.209(a)(f)	Spurious Emission	PASS
Part 15.203	Antenna Requirement	PASS

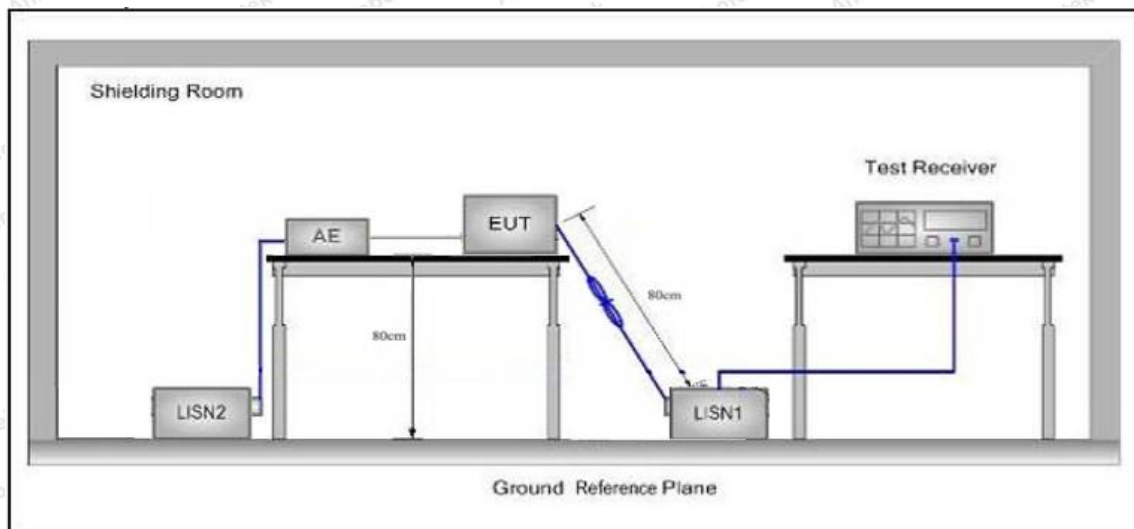
3. Conducted Emission Test

3.1. Test Standard and Limit

Test Standard	FCC Part15 Section 15.207		
Test Limit	Frequency	Maximum RF Line Voltage (dBuV)	
		Quasi-peak Level	Average Level
	150kHz~500kHz	66 ~ 56 *	56 ~ 46 *
	500kHz~5MHz	56	46
5MHz~30MHz	60	50	

Remark: (1) *Decreasing linearly with logarithm of the frequency.
 (2) The lower limit shall apply at the transition frequency.

3.2. Test Setup



3.3. Test Procedure

The EUT system is connected to the power mains through a line impedance stabilization network (L.I.S.N.). This provides a 50ohm coupling impedance for the EUT system. Please refer the block diagram of the test setup and photographs. Both sides of AC line are checked to find out the maximum conducted emission. In order to find the maximum emission levels, the relative positions of equipment and all of the interface cables shall be changed according to FCC ANSI C63.10-2020 on Conducted Emission Measurement.

The bandwidth of test receiver (ESCI) set at 9kHz.

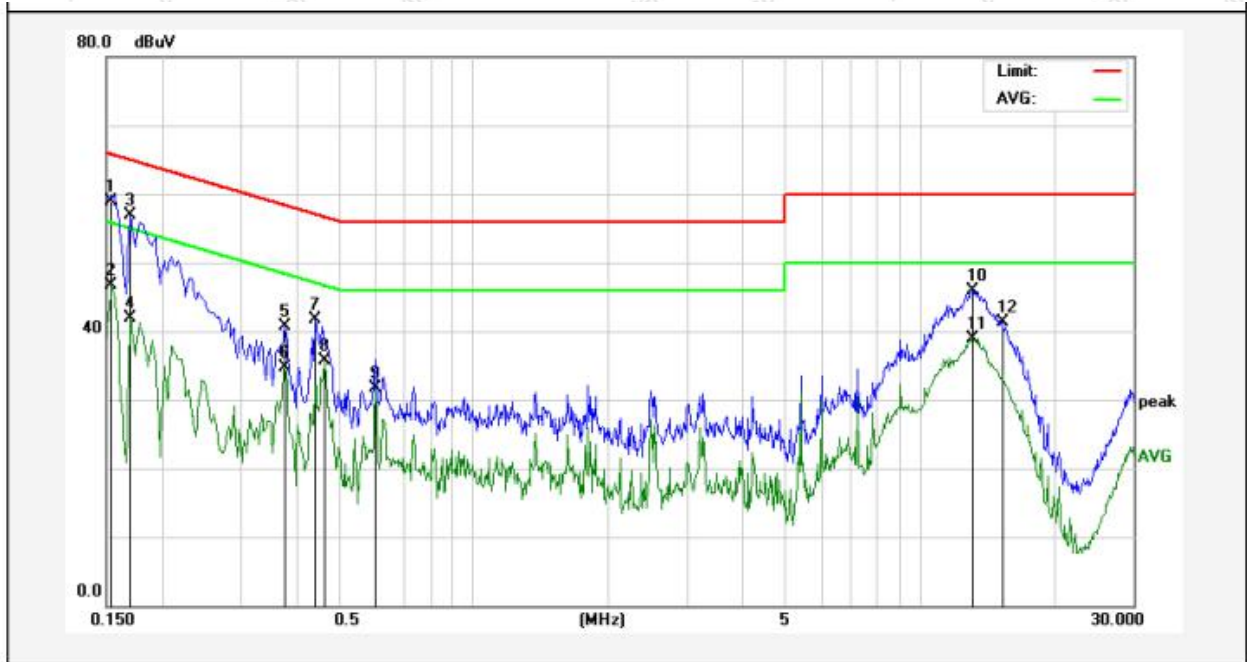
The frequency range from 150kHz to 30MHz is checked.

3.4. Test Data

Please to see the following pages

Conducted Emission Test Data

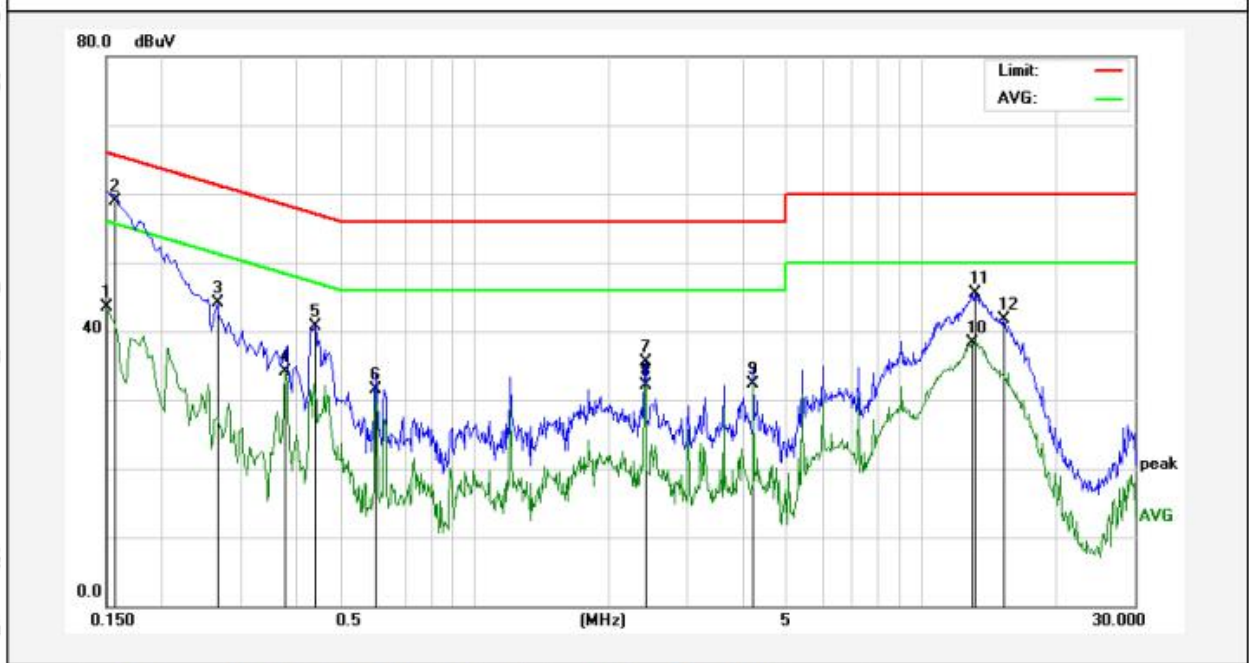
Test Site: 1# Shielded Room
 Operating Condition: Mode 3
 Test Specification: AC 120V, 60Hz for adapter
 Comment: Live Line
 Tem.: 23.1°C Hum.: 49%



No.	Freq. (MHz)	Reading (dBuV)	Factor (dB)	Result (dBuV)	Limit (dBuV)	Over Limit (dB)	Detector	Remark
1	0.1539	58.69	0.12	58.81	65.78	-6.97	QP	
2	0.1539	46.60	0.12	46.72	55.78	-9.06	AVG	
3	0.1700	56.78	0.12	56.90	64.96	-8.06	QP	
4	0.1700	41.74	0.12	41.86	54.96	-13.10	AVG	
5	0.3780	40.50	0.11	40.61	58.32	-17.71	QP	
6	0.3780	34.51	0.11	34.62	48.32	-13.70	AVG	
7	0.4420	41.49	0.13	41.62	57.02	-15.40	QP	
8	0.4620	35.60	0.13	35.73	46.66	-10.93	AVG	
9	0.6020	31.64	0.15	31.79	46.00	-14.21	AVG	
10	13.1059	45.67	0.15	45.82	60.00	-14.18	QP	
11	13.1059	38.85	0.15	39.00	50.00	-11.00	AVG	
12	15.2980	41.09	0.17	41.26	60.00	-18.74	QP	

Conducted Emission Test Data

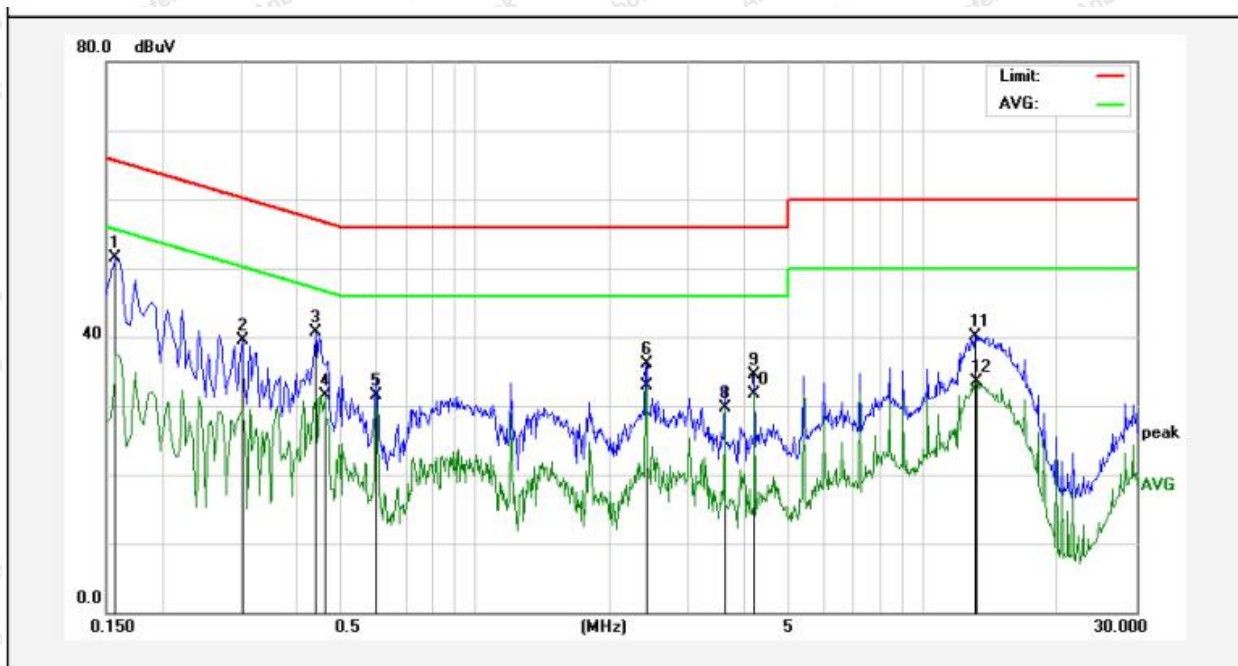
Test Site: 1# Shielded Room
 Operating Condition: Mode 3
 Test Specification: AC 120V, 60Hz for adapter
 Comment: Neutral Line
 Tem.: 23.1°C Hum.: 49%



No.	Freq. (MHz)	Reading (dBuV)	Factor (dB)	Result (dBuV)	Limit (dBuV)	Over Limit (dB)	Detector	Remark
1	0.1500	43.43	0.11	43.54	55.99	-12.45	AVG	
2	0.1580	58.85	0.12	58.97	65.56	-6.59	QP	
3	0.2660	44.04	0.13	44.17	61.24	-17.07	QP	
4	0.3780	33.93	0.11	34.04	48.32	-14.28	AVG	
5	0.4420	40.65	0.13	40.78	57.02	-16.24	QP	
6	0.6020	31.28	0.15	31.43	46.00	-14.57	AVG	
7	2.4100	35.44	0.12	35.56	56.00	-20.44	QP	
8	2.4100	32.08	0.12	32.20	46.00	-13.80	AVG	
9	4.2140	32.15	0.11	32.26	46.00	-13.74	AVG	
10	13.0100	38.09	0.15	38.24	50.00	-11.76	AVG	
11	13.1420	45.26	0.15	45.41	60.00	-14.59	QP	
12	15.2660	41.56	0.17	41.73	60.00	-18.27	QP	

Conducted Emission Test Data

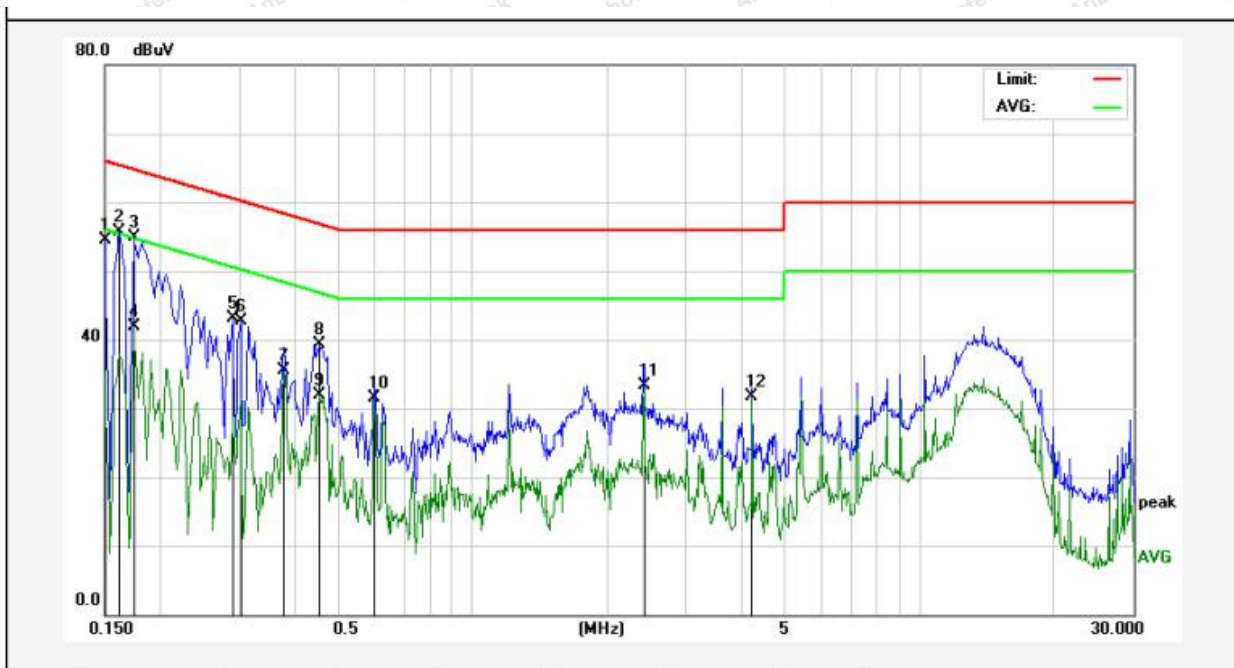
Test Site: 1# Shielded Room
 Operating Condition: Mode 3
 Test Specification: AC 240V, 60Hz for adapter
 Comment: Live Line
 Tem.: 23.1°C Hum.: 49%



No.	Freq. (MHz)	Reading (dBuV)	Factor (dB)	Result (dBuV)	Limit (dBuV)	Over Limit (dB)	Detector	Remark
1	0.1580	51.43	0.12	51.55	65.56	-14.01	QP	
2	0.3020	39.47	0.13	39.60	60.19	-20.59	QP	
3	0.4420	40.53	0.13	40.66	57.02	-16.36	QP	
4	0.4620	31.40	0.13	31.53	46.66	-15.13	AVG	
5	0.6020	31.28	0.15	31.43	46.00	-14.57	AVG	
6	2.4100	35.96	0.12	36.08	56.00	-19.92	QP	
7	2.4100	32.70	0.12	32.82	46.00	-13.18	AVG	
8	3.6140	29.68	0.12	29.80	46.00	-16.20	AVG	
9	4.2139	34.35	0.11	34.46	56.00	-21.54	QP	
10	4.2139	31.64	0.11	31.75	46.00	-14.25	AVG	
11	13.0859	39.99	0.15	40.14	60.00	-19.86	QP	
12	13.2139	33.43	0.15	33.58	50.00	-16.42	AVG	

Conducted Emission Test Data

Test Site: 1# Shielded Room
 Operating Condition: Mode 3
 Test Specification: AC 240V, 60Hz for adapter
 Comment: Neutral Line
 Tem.: 23.1°C Hum.: 49%



No.	Freq. (MHz)	Reading (dBuV)	Factor (dB)	Result (dBuV)	Limit (dBuV)	Over Limit (dB)	Detector	Remark
1	0.1499	54.46	0.11	54.57	66.00	-11.43	QP	
2	0.1620	55.50	0.12	55.62	65.36	-9.74	QP	
3	0.1740	54.85	0.12	54.97	64.76	-9.79	QP	
4	0.1740	41.82	0.12	41.94	54.76	-12.82	AVG	
5	0.2900	42.95	0.13	43.08	60.52	-17.44	QP	
6	0.3020	42.67	0.13	42.80	60.19	-17.39	QP	
7	0.3780	35.48	0.11	35.59	48.32	-12.73	AVG	
8	0.4540	39.26	0.13	39.39	56.80	-17.41	QP	
9	0.4540	31.75	0.13	31.88	46.80	-14.92	AVG	
10	0.6020	31.31	0.15	31.46	46.00	-14.54	AVG	
11	2.4100	33.24	0.12	33.36	46.00	-12.64	AVG	
12	4.2179	31.63	0.11	31.74	46.00	-14.26	AVG	

4. Radiation Spurious Emission and Band Edge

4.1. Test Standard and Limit

Test Standard	FCC Part15 C Section 15.209 and 15.205				
Test Limit	Frequency (MHz)	Field strength (microvolt/meter)	Limit (dBuV/m)	Remark	Measurement distance (m)
	0.009MHz~0.490MHz	2400/F(kHz)	-	-	300
	0.490MHz-1.705MHz	24000/F(kHz)	-	-	30
	1.705MHz-30MHz	30	-	-	30
	30MHz~88MHz	100	40.0	Quasi-peak	3
	88MHz~216MHz	150	43.5	Quasi-peak	3
	216MHz~960MHz	200	46.0	Quasi-peak	3
	Above 1000MHz	500	54.0	Average	3
			74.0	Peak	3

Remark:

(1)The lower limit shall apply at the transition frequency.

(2) 15.35(b), Unless otherwise specified, the limit on peak radio frequency emissions is 20dB above the maximum permitted average emission limit applicable to the equipment under test. This peak limit applies to the total peak emission level radiated by the device.

4.2. Test Setup

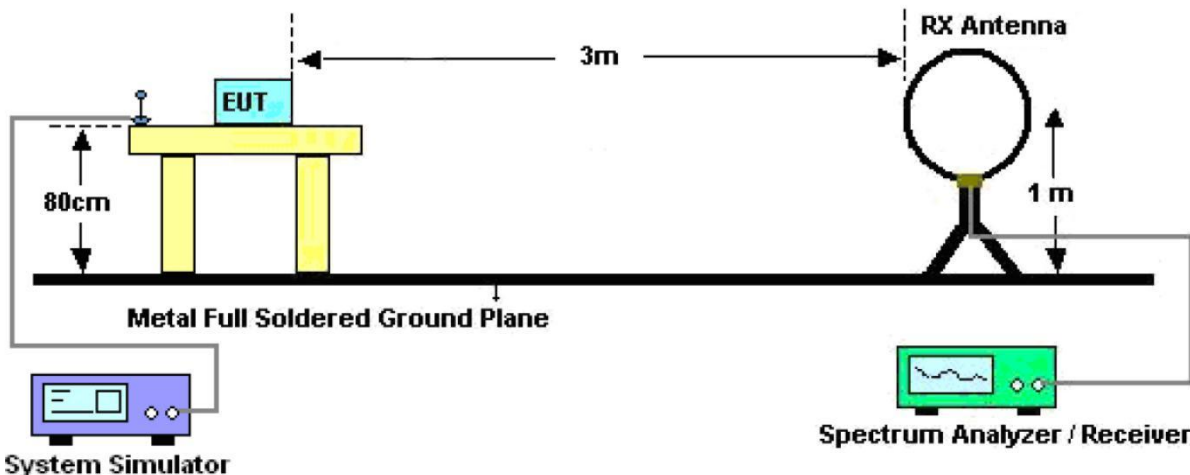


Figure 1. Below 30MHz

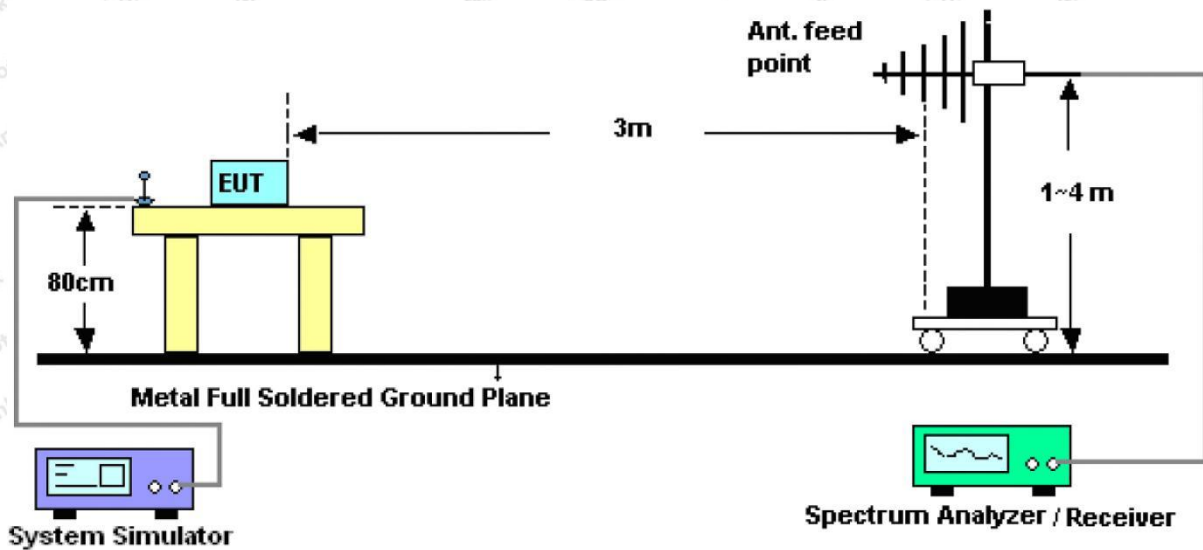


Figure 2. 30MHz to 1GHz

4.3. Test Procedure

For below 1GHz: The EUT is placed on a turntable, which is 0.8m above the ground plane.

The turn table can rotate 360 degrees to determine the position of the maximum emission level. The EUT is set 3 meters away from the receiving antenna which is mounted on an antenna tower. The antenna can be moved up and down from 1 to 4 meters to find out the maximum emission level. Rotated the EUT through three orthogonal axes to determine the maximum emissions, both horizontal and vertical polarization of the antenna are set on test. The EUT is tested in 9*6*6 Chamber. The device is evaluated in xyz orientation.

For 9kHz to 150kHz, Set the spectrum analyzer as:

RBW = 200Hz, VBW = 1kHz, Detector = Quasi-Peak, Trace mode = Max hold, Sweep = auto couple.

For 150kHz to 30MHz, Set the spectrum analyzer as:

RBW = 9kHz, VBW = 30kHz, Detector = Quasi-Peak, Trace mode = Max hold, Sweep = auto couple.

For 30MHz to 1000MHz, Set the spectrum analyzer as:

RBW = 100kHz, VBW = 300kHz, Detector = Quasi-Peak, Trace mode = Max hold, Sweep = auto couple.

4.4. Test Data

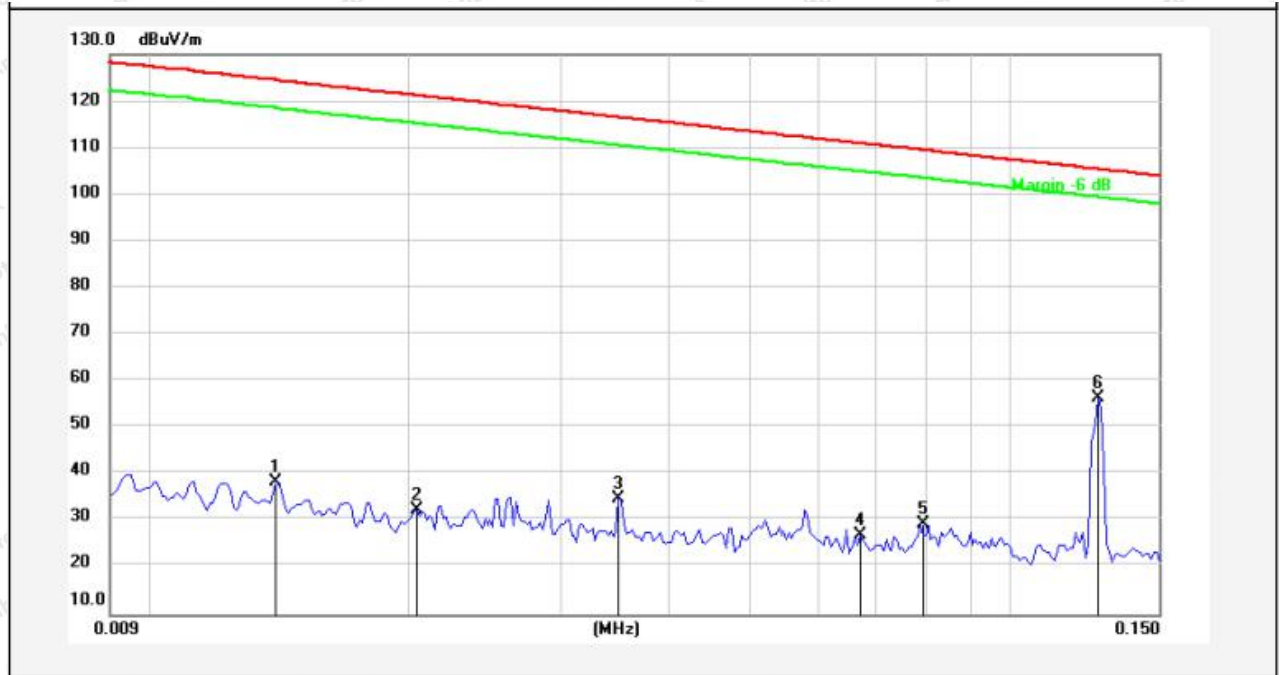
PASS

Note: The data is in TX mode, and this is the worst mode.

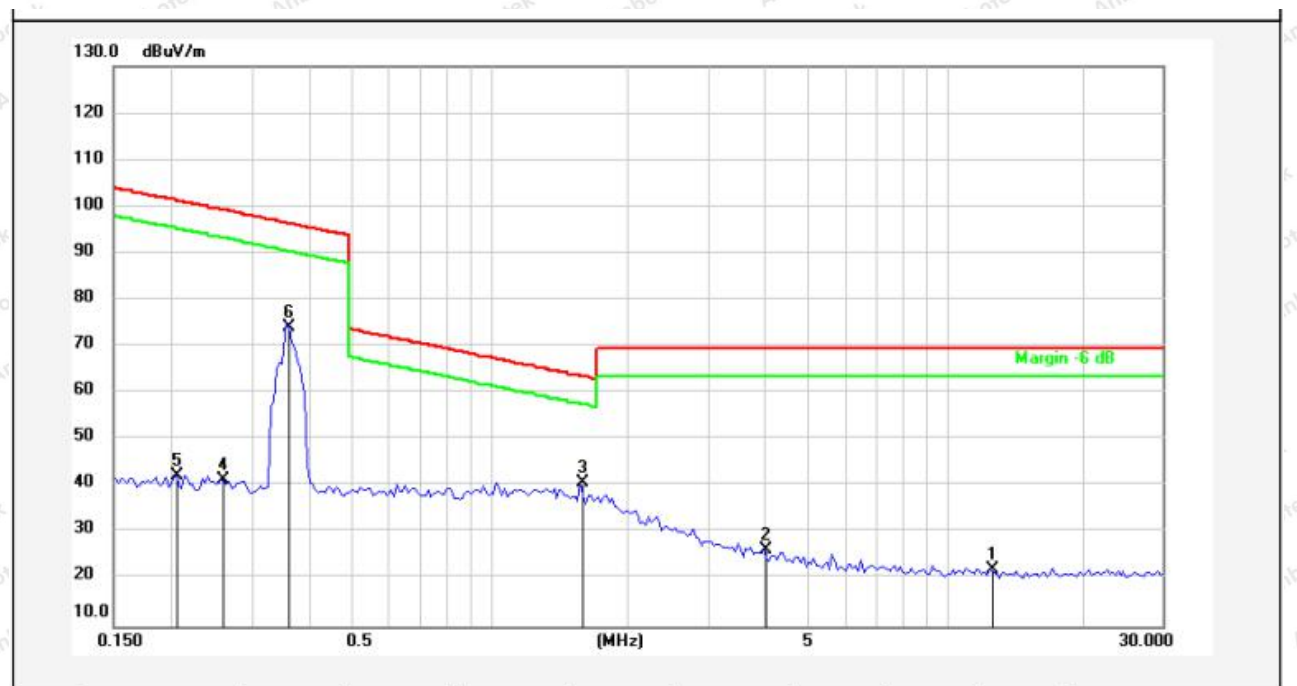
Test Results

(Between 9KHz – 30MHz)

Standard: FCC PART15 C _3m **Power Source:** AC 120V, 60Hz for adapter
Test item: Radiation Test **Temp.(C)/Hum.(%RH):** 22.4°C/49%RH
Test Mode: Mode 3 **Distance:** 3m



No.	Freq. (MHz)	Reading (dBuV)	Factor ()	Result (dBuV/m)	Limit (dBuV/m)	Over Limit (dB)	Detector	Height (cm)	degree (deg)	Remark
1	0.0140	18.08	20.18	38.26	124.49	-86.23	AV			
2	0.0204	12.00	20.30	32.30	121.24	-88.94	AV			
3	0.0352	14.16	20.48	34.64	116.53	-81.89	AV			
4	0.0670	6.53	20.38	26.91	110.98	-84.07	AV			
5	0.0791	8.96	20.36	29.32	109.54	-80.22	AV			
6	0.1277	35.90	20.34	56.24	105.42	-49.18	AV			

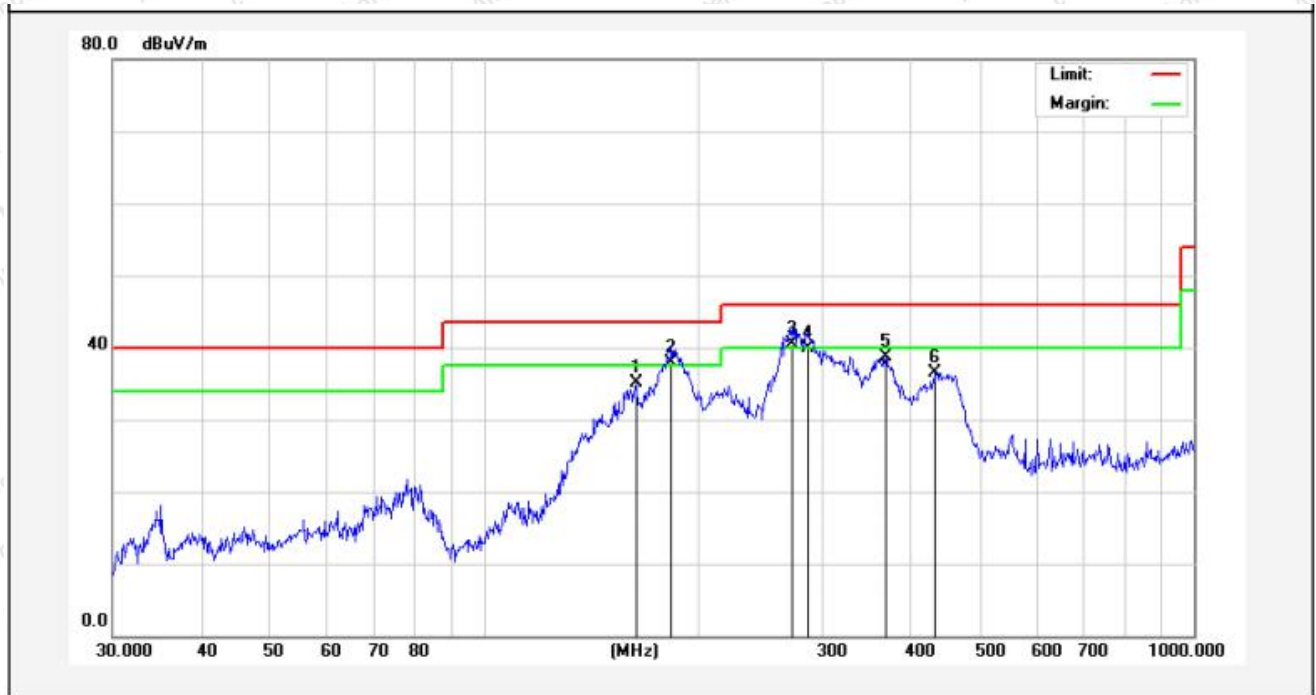


No.	Freq. (MHz)	Reading (dBUV)	Factor ()	Result (dBUV/m)	Limit (dBUV/m)	Over Limit (dB)	Detector	Height (cm)	degree (deg)	Remark
1	12.5156	1.74	20.53	22.27	69.50	-47.23	QP			
2	4.0062	5.88	20.36	26.24	69.50	-43.26	QP			
3	1.5851	20.35	20.26	40.61	63.63	-23.02	QP			
4	0.2615	21.16	20.30	41.46	99.22	-57.76	AV			
5	0.2061	22.06	20.31	42.37	101.28	-58.91	AV			
6	0.3600	53.77	20.28	74.05	96.46	-22.41	AV			

Remark: According to FCC PART 15.209 (d), the emission limits for the frequency bands 9–90 kHz, 110–490 kHz and above 1000 MHz, Radiated emission limits in these three bands are based on measurements employing an average detector.

(Between 30MHz –1000 MHz)

Standard:	FCC PART15 C _3m	Polarization:	Horizontal
Test item:	Radiation Test	Power Source:	AC 120V, 60Hz for adapter
Test Mode:	Mode 3	Temp.(C)/Hum.(%RH):	21.5°C/49%RH
Distance:	3m		



No.	Freq. (MHz)	Reading (dBuV)	Factor (dB/m)	Result (dBuV/m)	Limit (dBuV/m)	Over Limit (dB)	Detector	Height (cm)	degree (deg)	Remark
1	163.7550	58.94	-23.87	35.07	43.50	-8.43	QP			
2	183.2005	60.89	-23.04	37.85	43.50	-5.65	QP			
3	272.2776	60.06	-19.56	40.50	46.00	-5.50	QP			
4	285.9778	58.37	-18.37	40.00	46.00	-6.00	QP			
5	368.1116	54.70	-16.04	38.66	46.00	-7.34	QP			
6	432.5457	52.30	-15.71	36.59	46.00	-9.41	QP			

Standard:	FCC PART15 C _3m	Polarization:	Vertical
Test item:	Radiation Test	Power Source:	AC 120V, 60Hz for adapter
Test Mode:	Mode 3	Temp.(C)/Hum.(%RH):	21.5°C/49%RH
Distance:	3m		



No.	Freq. (MHz)	Reading (dBuV)	Factor (dB/m)	Result (dBuV/m)	Limit (dBuV/m)	Over Limit (dB)	Detector	Height (cm)	degree (deg)	Remark
1	31.8427	47.07	-17.66	29.41	40.00	-10.59	QP			
2	79.2426	49.68	-19.40	30.28	40.00	-9.72	QP			
3	179.3863	55.65	-20.63	35.02	43.50	-8.48	QP			
4	213.0151	56.04	-19.21	36.83	43.50	-6.67	QP			
5	276.1235	54.14	-17.07	37.07	46.00	-8.93	QP			
6	411.8240	53.36	-14.26	39.10	46.00	-6.90	QP			

5. Antenna Requirement

5.1. Test Standard and Requirement

Test Standard	FCC Part15 Section 15.203
Requirement	An intentional radiator shall be designed to ensure that no antenna other than that furnished by the responsible party shall be used with the device. The use of a permanently attached antenna or of an antenna that uses a unique coupling to the intentional radiator, the manufacturer may design the unit so that a broken antenna can be replaced by the user, but the use of a standard antenna jack or electrical connector is prohibited.

5.2. Antenna Connected Construction

The antenna is a Inductive loop coil Antenna which permanently attached, and the best case gain of the antenna is 0 dBi. It complies with the standard requirement.

APPENDIX I -- TEST SETUP PHOTOGRAPH

Photo of Conducted Emission Test

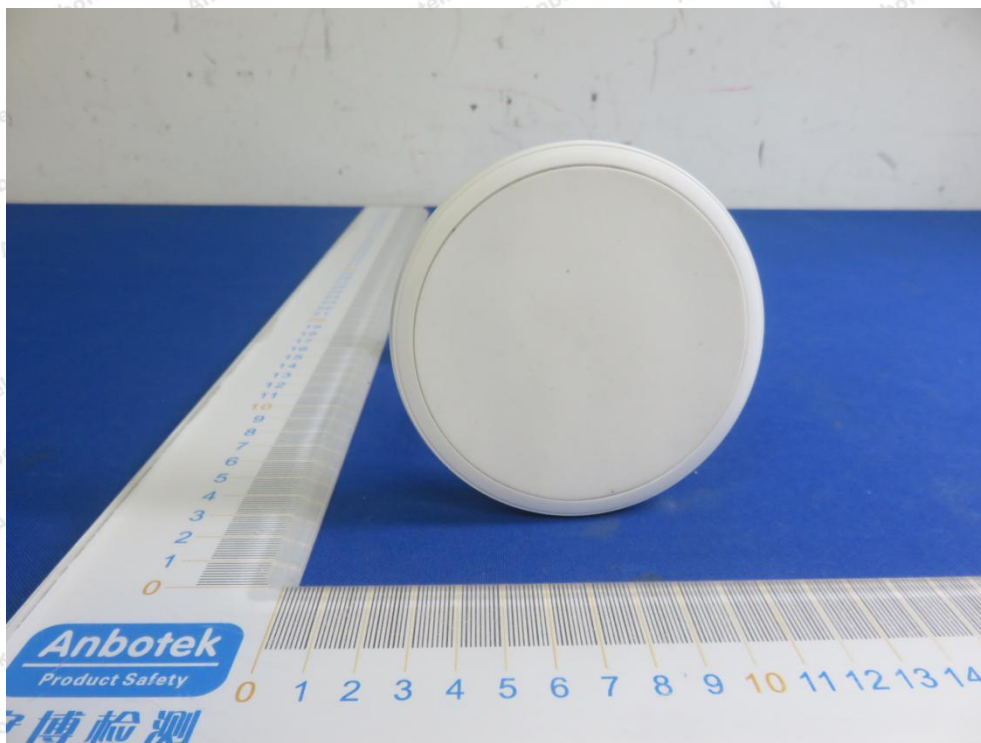
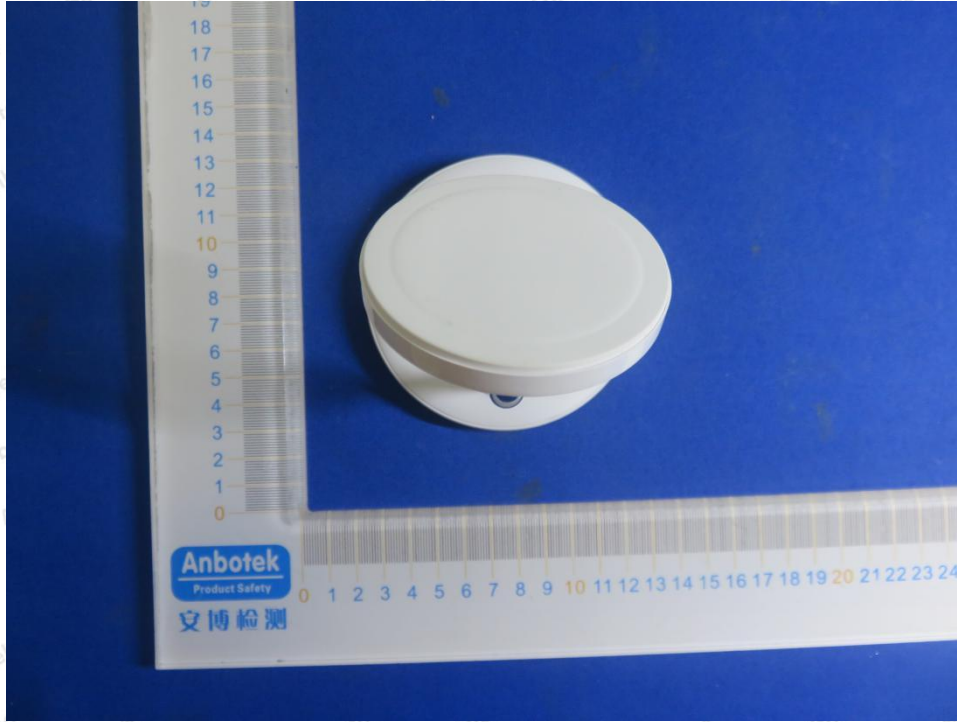


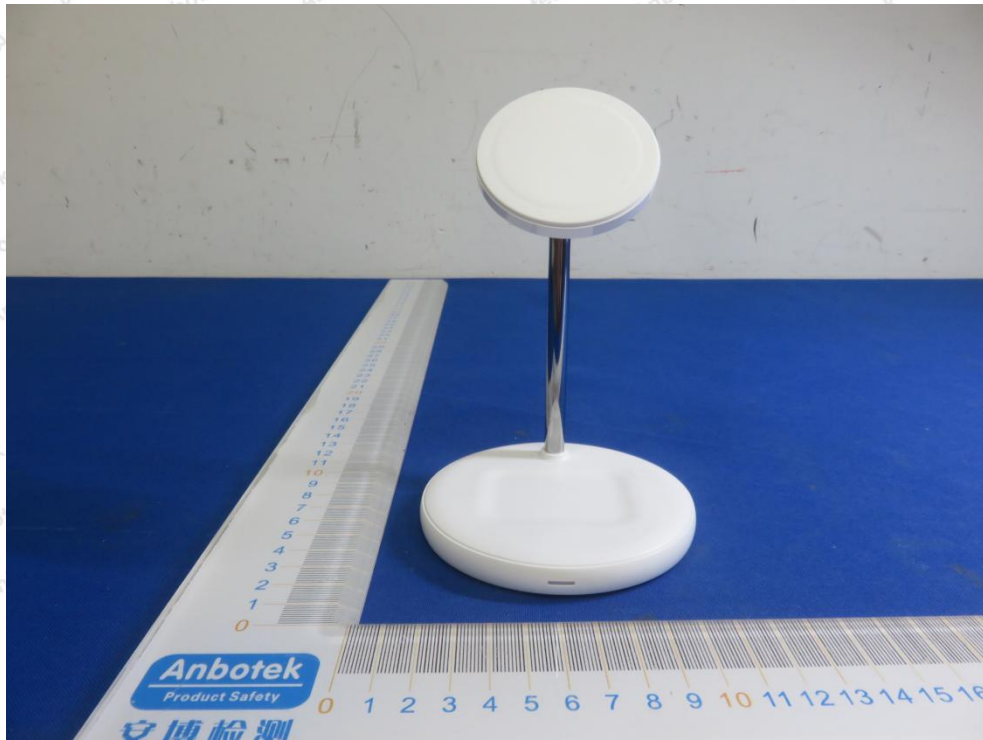
Photo of Radiation Emission Test

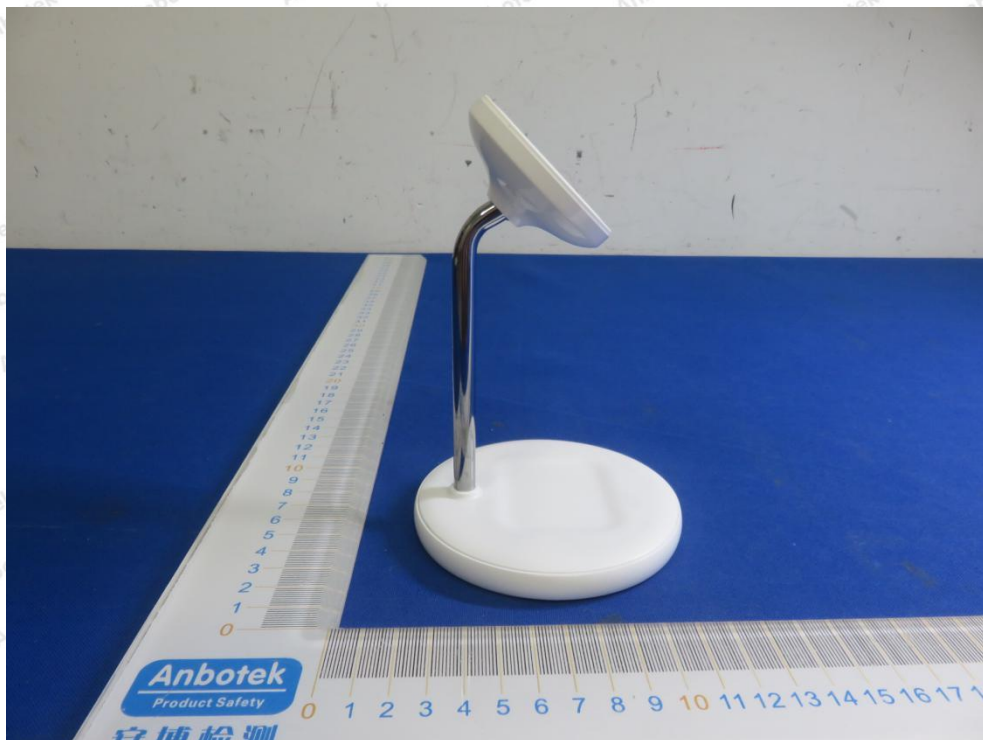
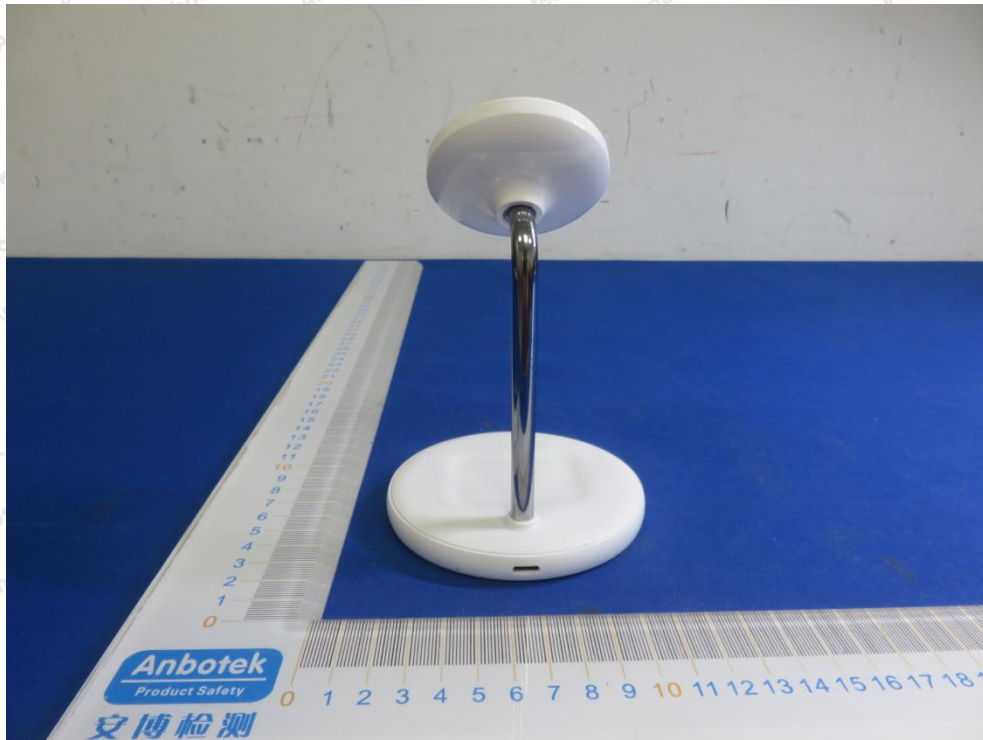




APPENDIX II -- EXTERNAL PHOTOGRAPH

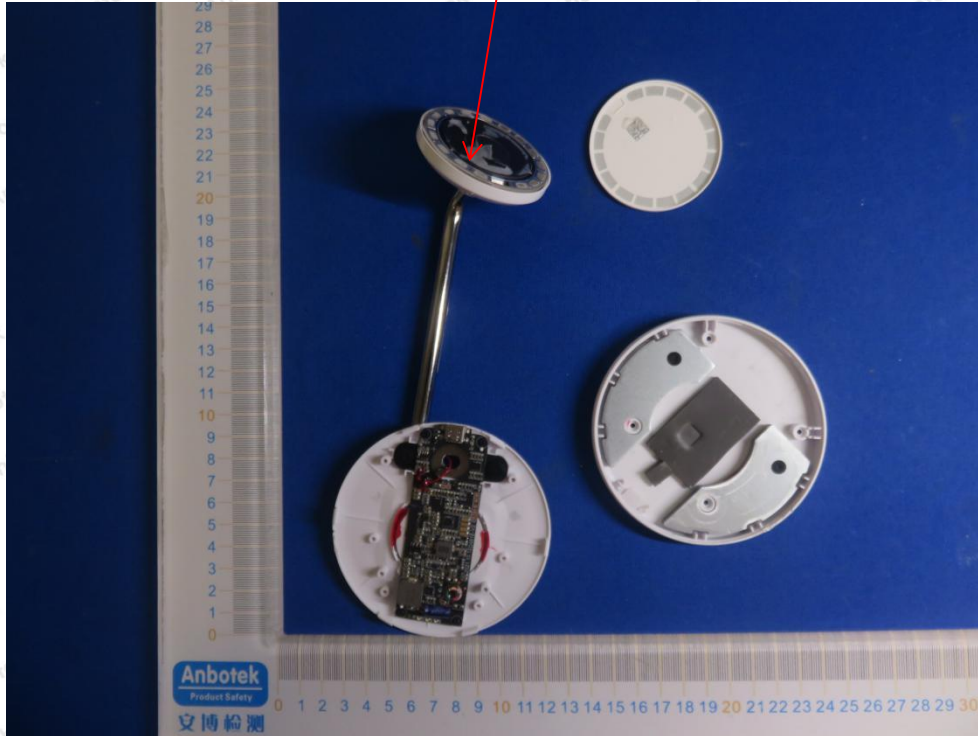




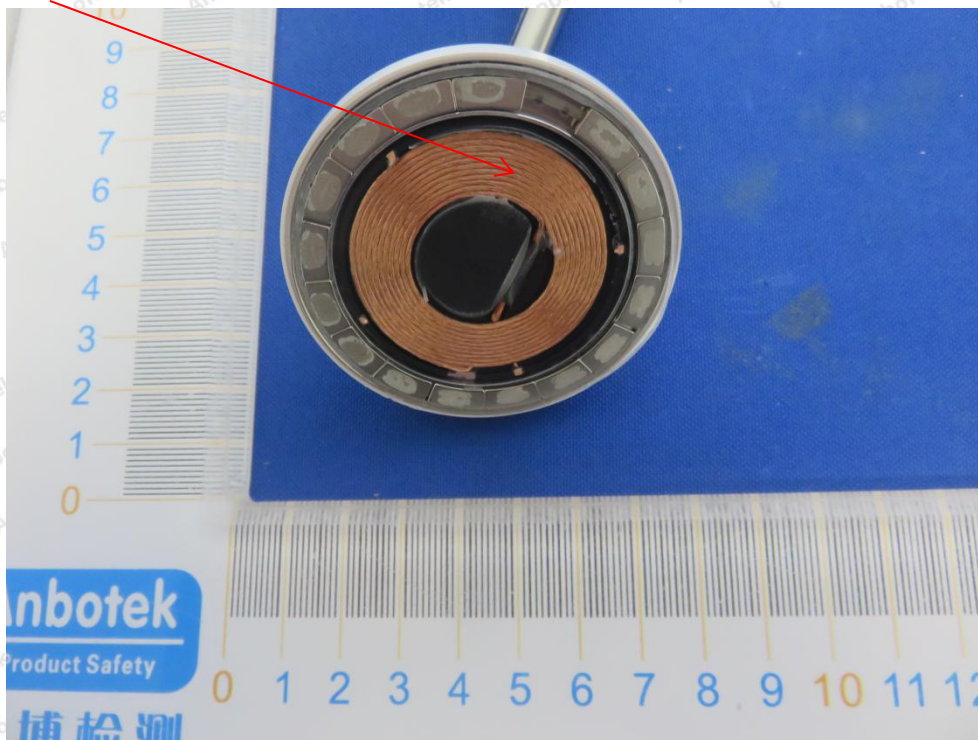


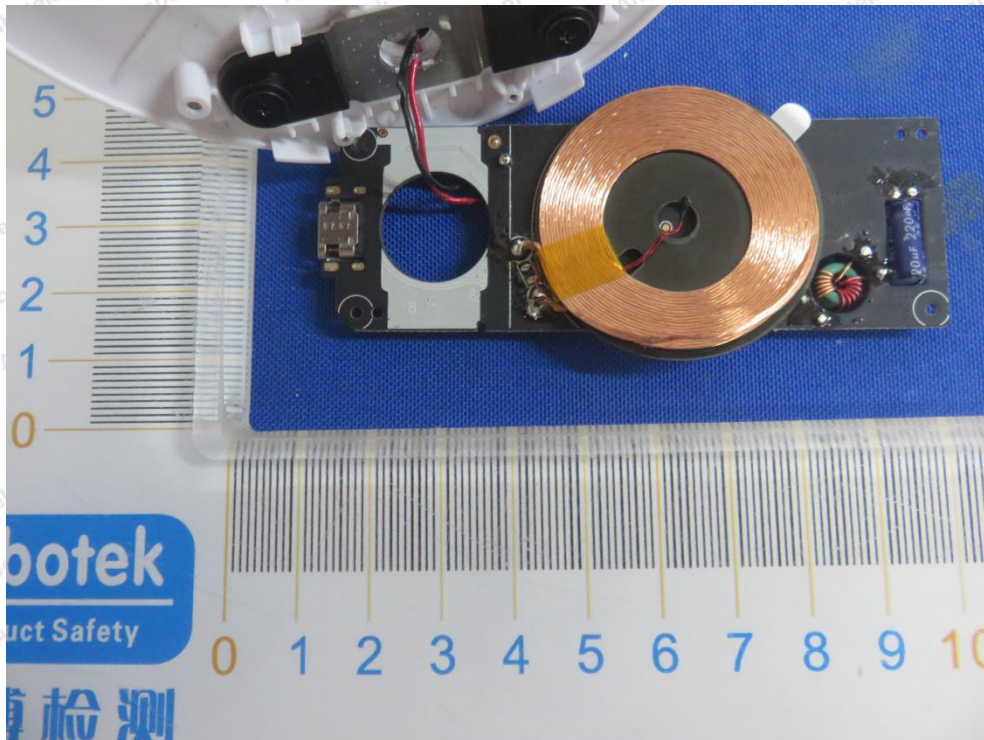
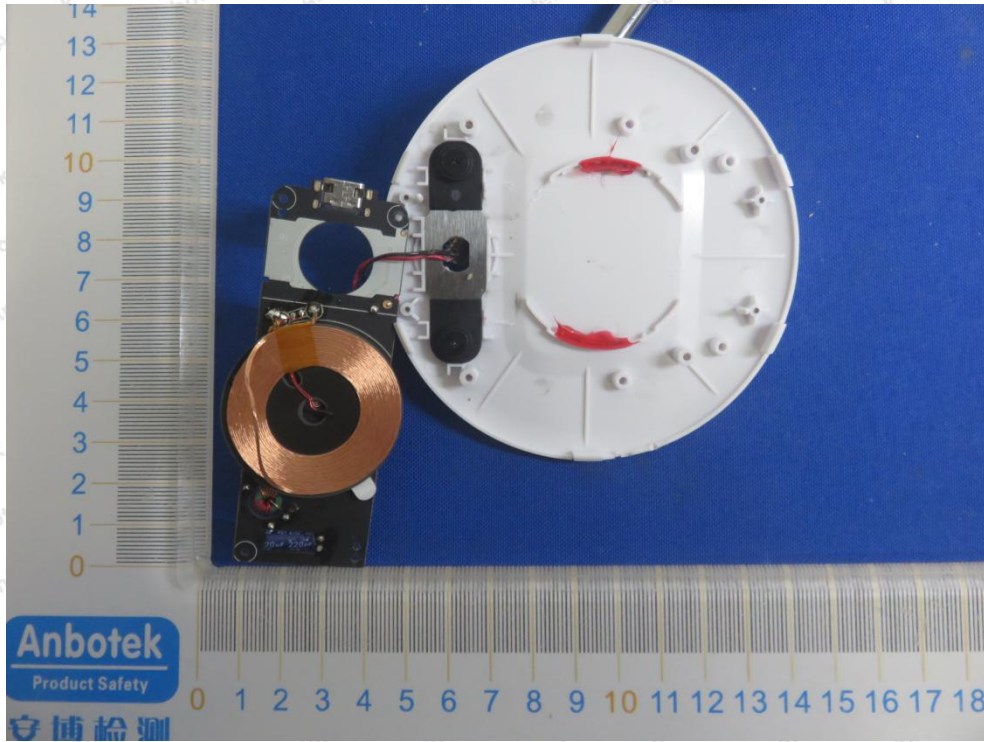
APPENDIX III -- INTERNAL PHOTOGRAPH

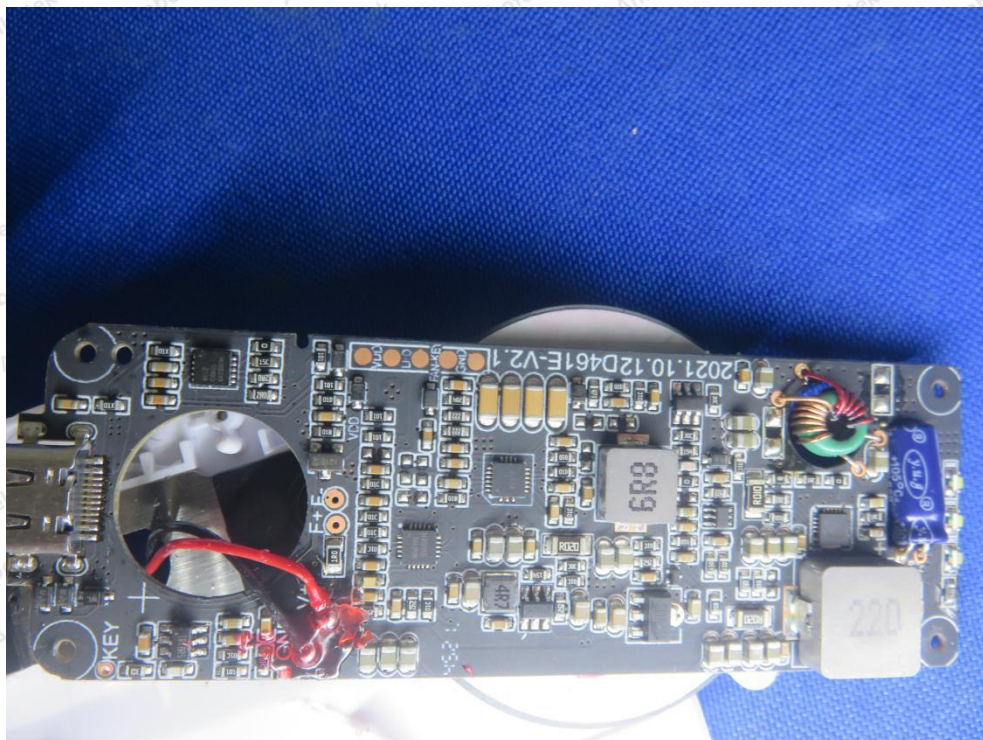
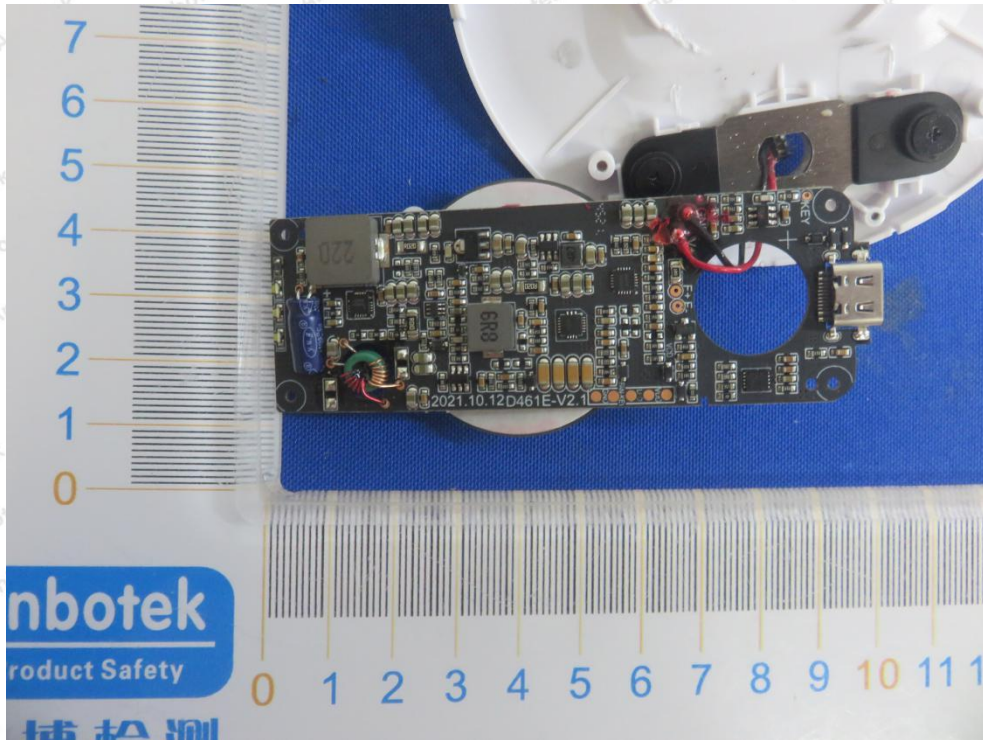
ANT 2



ANT 1







----- End of Report -----