

frente

35 cm



M A S C O T A S

A GPS to locate and take care of our pets



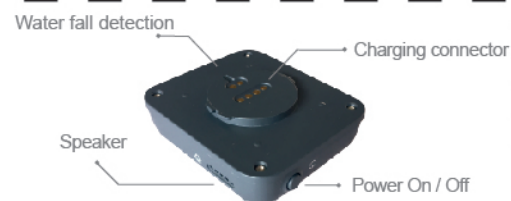
Quick Start Guide

Manual

Personal Bipy Mascotas

It's the GPS + 4G locator for the collar of your pet that allows you to take care of it and place it on a map, through the Personal Bipy Pets mobile application. Know how your pet is (room temperature, fall to the water, physical activity), shared and keeps track of your schedule (visits to the veterinarian, vaccines, etc.) defined safe areas to receive alerts when your pet leaves them.

Features



- Device 4G
- Location via GPS, A-GPS or WiFi
- Bluetooth BLE
- Use Nano SIM card
- Battery rechargeable by USB cable
- It has microphone and speaker
- IP67 (Supports falls to the water)
- Activity monitor
- Room temperature sensor
- LED lights for identification in low light conditions

Set up your Personal Bipy Mascotas

1- To start using your Bipy, when the locator is off, - insert the nano SIM card into the side slot until you hear a click and place the cover of the slot with its 2 screws (provided in the box) to maintain its resistance to water.



2- Verify that the locator has sufficient battery charge by connecting the supplied cable to the magnetic charging base and then supporting the device.

After a few seconds, the battery light will light indicating the state of the charge: green indicates that it has at least 40% charge and is ready.

3- Press and hold the power button located on the right-top side of the locator for 5 seconds. The device will turn on after a few seconds.

4- To activate the line, the locator will detect the new SIM and automatically generate a call to the preconfigured contact as "activation" the location will confirm if the line has been activated correctly.

You can also generate the activation call by pressing the power button 3 times in a row. A third option is to do it from the app, entering the lower right side menu: More-> Settings-> Activate your line follow the steps indicated.

Mobile app for Personal Bipy Mascotas

1- Download the Personal Bipy Mascotas mobile application from the App Store or Google Play Store on your iOS or Android smartphone, or through the scanning of this QR code:



2- Start the Personal Bipy Mascotas mobile application. At this moment the locator must be on and with the active line so that you can complete the necessary steps for its use.

3- Login to create to generate your Bipy account. Utiliza your name, password, mail and the phone number of your smartphone. In this way we can register as an administrator of the device, send you an email with the manual, characteristics of the plan and the terms and conditions of the service.

4- With your registered account, you will be able to link the app with your locator to start using it. Click on the "Add your pet" application.

5- Before continuing, look for the telephone number of your locator, the same figure of sale. You will also need the device number as in the box.

6- Ready! In less than 10 minutes we will activate the service.

Locator functions of Personal Bipy Mascotas

• **Functions "I lost my pet":** When from the application press the button "I lost my pet", the locator will activate several functions for a period of 20 minutes so you can find:

Activate the GPS in urgent mode. It will also light the "BIPY" lights in a rogo color in a blinking way to get attention. With your speaker, you can select the possibility of issuing a phrase indicating the phone number of the administrator to be heard by people who might find your pet. Finally, if the pet is within a radius of 80m and is a free zone of construction, you can visualize on a special map the location to which it is located.

A s vez, when you activate this function, the app will consult you if you want to share basic data,

both the pet and yours, so that other persions with the Bipy Mascotas app can help you find it.

• **Call function:**
The locator can make calls to the application. You only have to define the contacts you can call and log in from the application by entering the "Contacts" function.

• **LED lights:**
Specially designed for those nocturnal walks where your pet plays in dark places.

• **Activity monitor:**
You can know the activity, daily of your pet. And, even, indicate daily objectives to monitor that maintains its usual level of activity.

Contacts

Personal Bipy (Argentina)
Phones: 0800-444-0800 or 0800-444-4434
Web: personal.com.ar
Instagram: instagram.com/personalar
Twitter: https://twitter.com/PersonalAr
Facebook: facebook.com/personalargentina

16 cm

dorso

35 cm

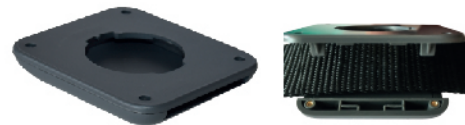
- **Ambient temperature sensor:** You can control the ambient temperature in which your pet is and from the app set the minimum and maximum limits to generate alerts.

- **Water fall sensor:** You will receive alerts if your Pet falls into the water. These are only activated in case the device is submerged.

How to place the Bipy to your pet

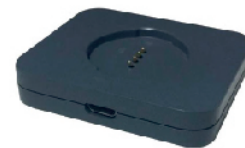
- **Step 1:** Bipy counts 2 parts. A base that fits the collar of your pet AND the locator.

The base closes under pressure, that is why to open and place the strap of your pet, you just have to separate the parts.



Load base

Bipy has a magnetic load base specially designed so that, during the time your pet rests, you can load your locator.



- **Step 2:** Once the strap is placed in the way we show in the way we show in the illustration, press both parts of the support until you hear a "Click, being prepared to receive the locator.



We recommend leaving this base placed permanently, to avoid breaks in the plastic parts. Next to these pieces, we add some screws, so you can select the shape that gives you more security to hold the strap.

- **Step 3:** Finally, it was time to place the locator and start using it. To prevent it from getting out while playing your mascot, it must be inserted in the slot and generate a half turn until it is in the final position shown below.

You must connect this base with the supplied cable to any USB port or wall adapter you have. You only have to take into account not to force the support of the locator in the base, since it has a unique load position. If the support does not feel that both parts are stuck together, you can turn 90 degrees the locator, until you feel that eliminating took effect.

Application features Personal Bipy Mascotas

- **Device location:** Allows authorized users to locate the locator in the application.

- **Radar:** It will allow you to see if your pet is near or far from your location, in a radius of 80 meters.

- **I lost my pet:** Strength functions, specialize in the locator to track and allow you to find your pet.

- **Temperature:** You will know the approximate ambient temperature at which your pet is found, being able to activate alerts if the temperature is outside the ranges that you have set.

- **Activity:** We estimate the activity of the pet. You will be able to establish daily objectives and track them.

- **Force call from the pager:** You can generate a call from the pager to your cell phone to be in contact with your pet, and listen to what happens around you.

- **Secure zones:** Allows you to configure secure zones in the application and, with this function, issue alerts to the phone, each

time the locator is located outside the previously defined area.

- **Fall into the water:** You will receive an alert in case your pet is in the water and the Bipy is submerged.

- **Route history:** By accessing this function, you can see the routes recorded by the locator during the last hours.

- **Display up to 10 devices:** Allows you to link up to 10 locators in the application and identify them.

- **Alert notifications:** The phone can display alerts such as: low battery, notification of safe area, notification of falls to water and temperature, among others.

- **Remote reboot:** Allows the reboot of the locator from the application.

- **Remote shutdown:** Allows you to turn off the locator from the application.

- **Reminders:** This function allows you to set, edit, delete and synchronize reminders in the application to carry your agenda.

- **Important information about your pet:** You can save your photos, your vaccinations and everything you consider important for your pet.

Note: The Activity function was designed exclusively for consultation and welfare purposes. The data provided should not replace the diagnosis or consultation of the veterinarian,

5. How do I turn on the locator?
Keeping the button on the top right hand pressed for 5 seconds.

6. How do I turn off the locator?
Keeping the button on the top right hand pressed for 5 seconds. You can also do it from the application.

7. How do I activate the locator line for the first time?

With the Bipy off, insert the Nano SIM and then turn on the Locator. After a few seconds, it will detect the new SIM and generate a call to the Activation contact that is preconfigured. By pressing the power button 3 times, you can also generate the call.

You can also do it from the app, entering the lower right side menu More> Settings> Activate your line."

Frequent questions

1. What type of SIM cards does the locator use?

Nano SIM cards with calls and data. Your Bipy line already has a plan that includes calls and data, especially designed for your daily use.

2. What operating system is compatible with the application?

Android 4.4 or above or iOS version 9.3 and up.

3. Is the locator submersible?

Yes, it is Waterproof IP67, supporting the complete immersion of water with a depth of up to 1 meter in a temporary way (maximum 30 minutes).

4. Can the pager make calls to any phone?

The Personal Bipy Mascotas app allows you to define which numbers you can call.

8. How do I monitor the locator from my cell phone?

Downloading the Personal Bipy Mascotas application from your Store.

9. What do I do if the GPS does not take a signal?

Make sure that the Bipy line is active and that your smartphone has data connection. Finally, try to approach a window to facilitate the GPS detecting it or restart the locator.

16 cm

FCC Warning:

This device complies with part 15 of the FCC Rules. Operation is subject to the following two conditions: (1) This device may not cause harmful interference, and (2) this device must accept any interference received, including interference that may cause undesired operation.

Any Changes or modifications not expressly approved by the party responsible for compliance could void the user's authority to operate the equipment.

This equipment has been tested and found to comply with the limits for a Class B digital device, pursuant to part 15 of the FCC Rules. These limits are designed to provide reasonable protection against harmful interference in a residential installation. This equipment generates uses and can radiate radio frequency energy and, if not installed and used in accordance with the instructions, may cause harmful interference to radio communications. However, there is no guarantee that interference will not occur in a particular installation. If this equipment does cause harmful interference to radio or television reception, which can be determined by turning the equipment off and on, the user is encouraged to try to correct the interference by one or more of the following measures:

- Reorient or relocate the receiving antenna.
- Increase the separation between the equipment and receiver.
- Connect the equipment into an outlet on a circuit different from that to which the receiver is connected.
- Consult the dealer or an experienced radio/TV technician for help.

The SAR limit of USA (FCC) is 1.6 W/kg averaged over one gram of tissue. Device types PT-v01 (FCC ID: 2AQYLPT-V01) has also been tested against this SAR limit. The highest reported SAR values for body-worn accessory is 0.92 W/kg respectively. The Max simultaneous SAR is 1.13 W/kg. This device was tested for typical body-worn operations with the back of the device kept 0mm from the body. To maintain compliance with FCC RF exposure requirements, use accessories that maintain a 0mm separation distance between the user's body and the back of the device. The use of belt clips, holsters and similar accessories should not contain metallic components in its assembly. The use of accessories that do not satisfy these requirements may not comply with FCC RF exposure requirements, and should be avoided.