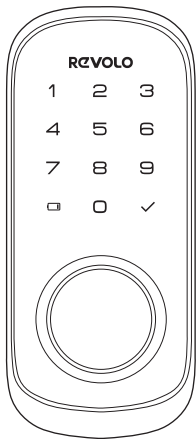




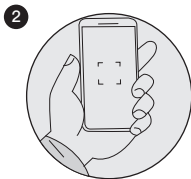
# WiFi Smart Lock



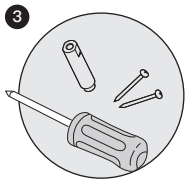
Quick Start Guide



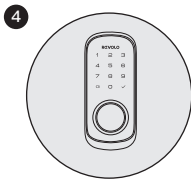
Download the Revolo app to begin setup.



Use your phone's camera to scan the QR code on you device.



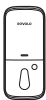
Follow the instructions and replace your existing lock.



Calibrate your lock and you are done.

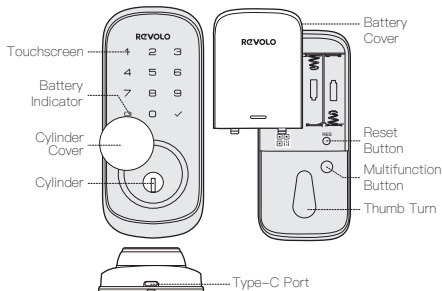
## WHAT'S INCLUDED

---



## PRODUCT OVERVIEW

---



## DEFINATION

---

### Multi-function Button

Push and HOLD the **Multi-function button** on inside panel for **3 Seconds** to active **Privacy Mode**. This will disable all user PIN code access and APP control. **Privacy Mode** will be disable autometically after unlock the device with the **Thumb Turn** or **Mechanical Key**.

### Reset Button

Push and HOLD the **Reset Button** for **5 seconds** to reset your device. After reset operation, the lock will be restored to factory default settings, all user credentials will be deleted.

### Battery Indicator

The LED will turn **RED** if the battery level is lower than 20%. Please replace the batteries as soon an possible.

## Type-C Port

Insert a **Type-C** cable into the Type-C port and use a portable battery to power the Smart Lock. If your device's batteries are completely ran out.

# Starts Here!

## DOWNLOAD REVOLO APP

---

Download the Revolo APP from the APP store or Google Play.



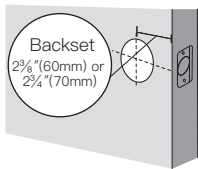
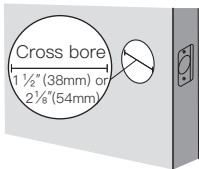
Note: The Revolo WiFi Smart Lock is embedded with an encryption chip. Bluetooth & WiFi data, and all user credentials are all encrypted, so user information is secure and cannot be accessed by others.

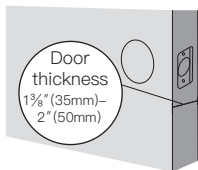
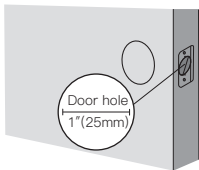
Sign up for a Revolo account , and add the Smart Lock to device list. Remove the battery cover and scan the QR code on the back of the device to view the Smart Lock installation video and setup instruction.

## PREPARE DOOR FOR INSTALLATION

---

1. Make sure that the following criteria are met so that the Smart Lock can be installed properly:
  - ① Check the door status. Make sure the doorframe is aligned with the door.
  - ② There are no obstructions stuck in the doorframe.
  - ③ Leave enough space for the deadbolt to extend into the doorframe when the door is locked.
2. Check your door / frame dimensions to make sure that they fit the following measurements:
  - ① The cross bore diameter  $2\frac{1}{8}"$  (54 mm) or  $1\frac{1}{2}"$  (38 mm)
  - ② Backset  $2\frac{3}{8}"$  (60 mm) or  $2\frac{3}{4}"$  (70 mm)
  - ③ Diameter of the door hole  $1"$  (25 mm)
  - ④ Door thickness  $1\frac{3}{8}"$  (35 mm) –  $2"$  (50 mm)





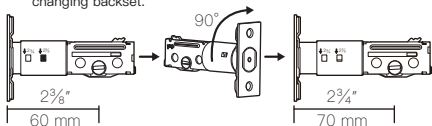
## STEP 1

### INSTALLING THE LATCH AND STRIKE

To install the deadbolt:

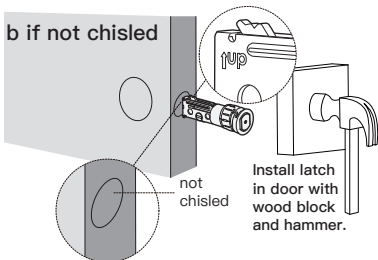
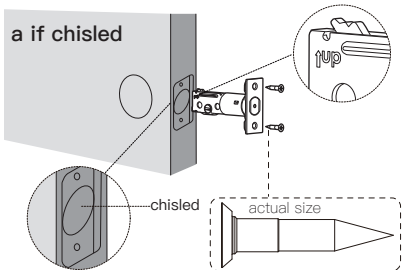
1. Measure your door's backset dimension: whether it is  $2\frac{3}{4}$ " (70 mm) or  $2\frac{3}{8}$ " (60 mm) .
2. If your door's backset dimension is  $2\frac{3}{8}$ " (60 mm), use the provided deadbolt to install.  
If your door's backset is  $2\frac{3}{4}$ " (70 mm). Rotate and pull the latch as shown the extend latch.

**⚠** The bolt must be in retracted(Unlocked) position when you are changing backset.

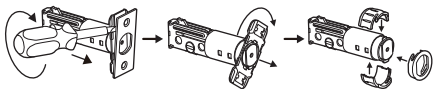


3. Insert the deadbolt into the doorframe and make sure the word "UP" faces up as indicated on the deadbolt.

4. Screw into the doorframe with a screwdriver (not provided).







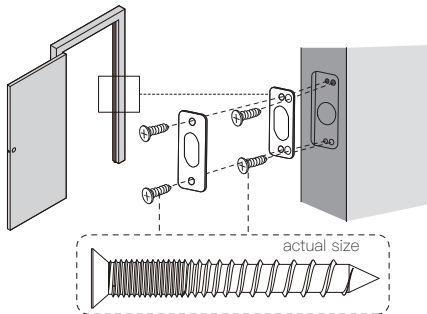
Use a flathead screwdriver to remove rectangular face from latch and install driver-in collar.

5. Install strike on the door frame.



**IMPORTANT:**

Make sure hole in door frame is drilled a minimum of 1" (25mm) deep.



## STEP 2

### INSTALLING EXTERIOR ASSEMBLY



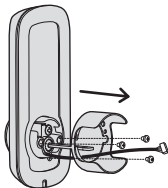
#### IMPORTANT:

Before installation, make sure the latch is fully retracted (in the unlocked position).

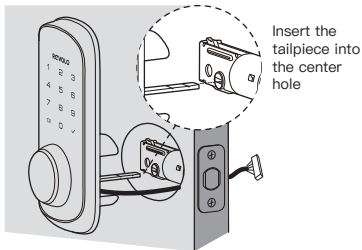


To install the exterior assembly:

1. Measure your cross bore dimension and determine the installation steps accordingly.
  - If the diameter of your cross bore is  $2\frac{1}{8}$ " (54mm), install directly.
  - If you have a  $1\frac{1}{2}$ " (38mm) cross bore, remove the spacer.



2. Route the cable connected on the exterior assembly under the deadbolt. Align the tailpiece with center hole of the deadbolt, and insert it into the center hole.

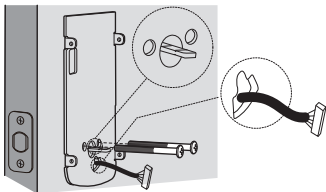


## STEP 3

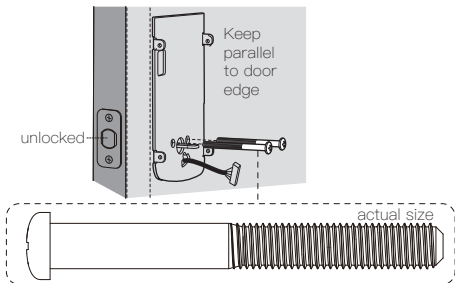
### INSTALLING THE MOUNTING PLATE

---

1. Send the cable through the bottom slot in the mounting plate.



2. Secure the mounting plate with the supplied screws.

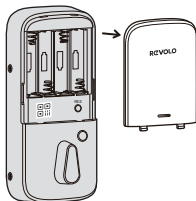


## STEP 4

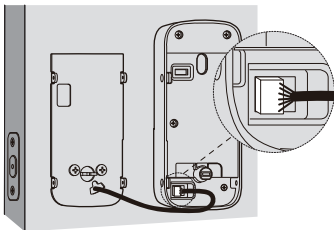
### INSTALLING INTERIOR ASSEMBLY

---

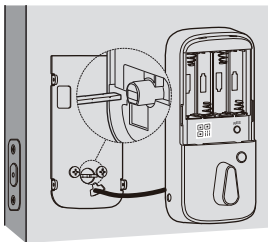
1. Remove the battery cover.



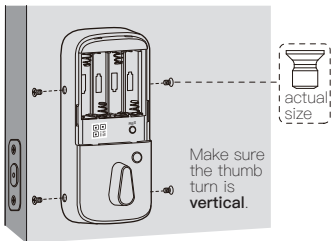
2. Connect the cable and ensure tight cable connection.



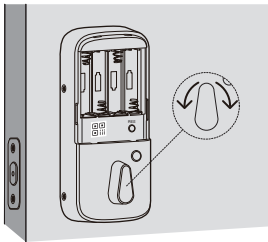
3. Rotate the thumb turn in vertical position and install the interior assembly.



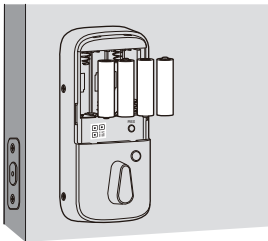
4. Secure the interior assembly with supplied screws.



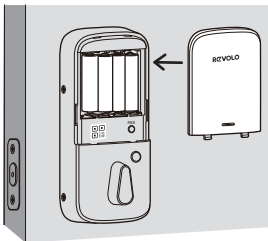
5. Test the thumb turn manually for smooth rotation. If thumb turn don't rotate, repeat **3**, make sure the thumb turn in vertical position



6. Insert four AA batteries into the battery compartment matching the polarity (+/-) indicated.



7. Scan the QR code to pair your device with your phone. Close battery cover.



## STEP 5

### PAIR YOUR PHONE WITH SMART LOCK AND SET UP YOUR SMART LOCK THROUGH APP

---



Note: The lock will not lock automatically before the setting is completed. To avoid being locked outside, pair your phone with the Smart Lock and set an access code unlocking the door.

To pair your phone with Smart Lock.

1. Scan the QR code on the back of the Smart Lock to get Bluetooth information of the Smart Lock. Follow the on-screen instructions to complete the setup.



Note:

- The first user that is paired is the only administrator, and can authorize other users to use the lock.
- Reset the device locally by press and HOLD the reset button for 5 seconds will not unpair the device from the administrator's APP.
- The administrator can still setup and operate the device with Revole APP, after reset locally, however the other users will be deleted automatically from the APP and lock.



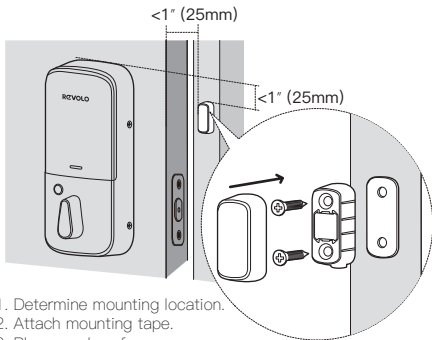
# STEP 6

## INSTALLING DOOR SENSOR



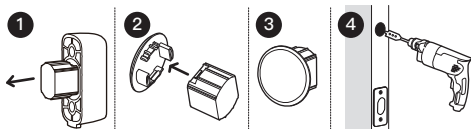
For optimal performance, Door Sensor should be mounted within 1" from the edge of your door, and within 1" from the top of the interior assembly.

### Surface Mount

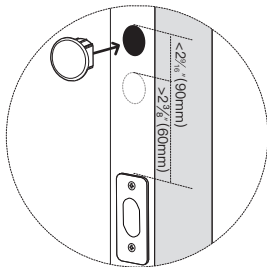


1. Determine mounting location.
2. Attach mounting tape.
3. Place on door frame.
4. Screw into frame (optional).
5. Attach the cover.
6. Calibrate your Lock.

## Flush Mount



1. Remove magnet from housing
2. Attach magnet to cap
3. Determine mounting location and Drill the hole on your door frame:
  - a. more than 1"(25mm) to 1.5"(38mm) from the top edge of your deadbolt strike plate,
  - b. Requires a  $\frac{1}{2}$ " (12.5mm) deep hole,
  - c. Requires a  $\frac{5}{8}$ " (16mm) inch diameter hole.
4. Insert Doorsensor into the hole



## FCC Warning

This device complies with part 15 of the FCC rules. Operation is subject to the following two conditions: (1) this device may not cause harmful interference, and (2) this device must accept any interference received, including interference that may cause undesired operation.

Changes or modifications not expressly approved by the party responsible for compliance could void the user's authority to operate the equipment.

NOTE: This equipment has been tested and found to comply with the limits for a Class B digital device, pursuant to part 15 of the FCC Rules. These limits are designed to provide reasonable protection against harmful interference in a residential installation. This equipment generates uses and can radiate radio frequency energy and, if not installed and used in accordance with the instructions, may cause harmful interference to radio communications. However, there is no guarantee that interference will not occur in a particular installation. If this equipment does cause harmful interference to radio or television reception, which can be determined by turning the equipment off and on, the user is encouraged to try to correct the interference by one or more of the following measures:

-Reorient or relocate the receiving antenna.

- Increase the separation between the equipment and receiver.
- Connect the equipment into an outlet on a circuit different from that to which the receiver is connected.
- Consult the dealer or an experienced radio/TV technician for help.

## Radiation Exposure Statement

To comply with FCC RF exposure compliance requirements, this grant is applicable to only mobile configurations. The antennas used for this transmitter must be installed to provide a separation distance of at least 20cm from all persons and must not be co-located or operating in conjunction with any other antenna or transmitter.