

# Shenzhen Kaadas Intelligent Technology Co., Ltd.

## Declaration of difference

Date: 2023-10-10

To Whom It May Concern:

The Product: Smart Lock

Model No.: KA215-Z, KA210A, KA210

FCC ID: 2AQY4-KA210

1. The same models are difference in appearance:

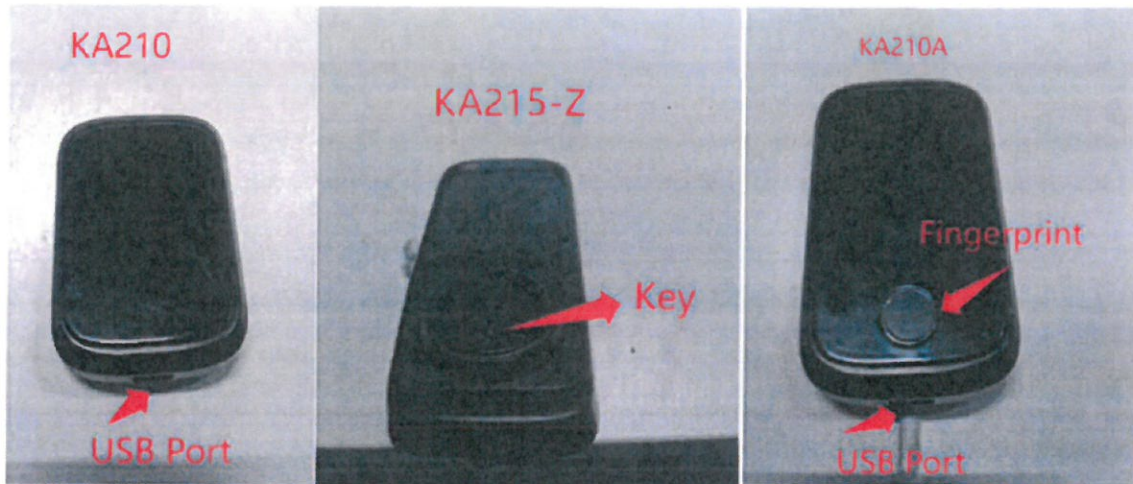
The same models are electrical identical including the same software parameter and hardware design (i.e., circuit design, PCB Layout, RF module/circuit, antenna type(s) and antenna location, components on PCB, etc.), same mechanical structure and design (including product enclosure, materials, etc.), the difference is the colour.

Model	Photo		
KA210			
KA210A			
KA215-Z			

# Shenzhen Kaadas Intelligent Technology Co., Ltd.

## 2.Product Appearance Description

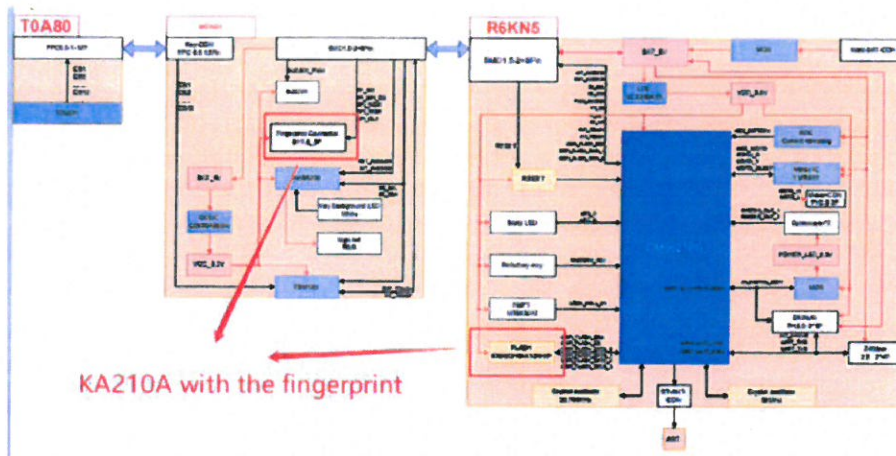
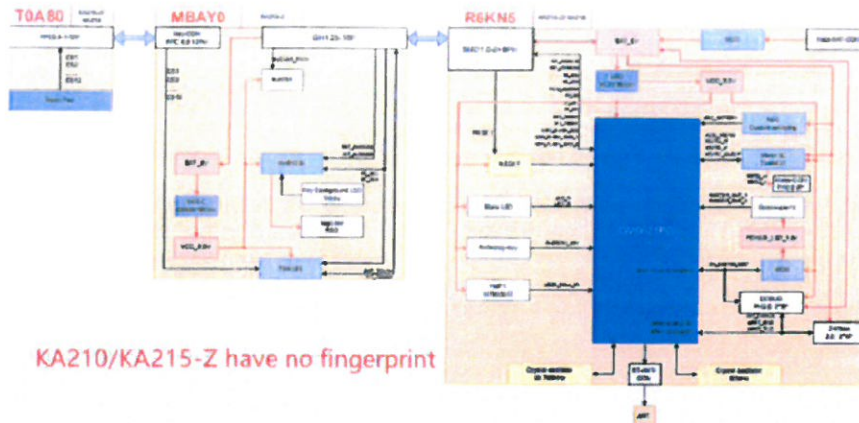
KA210, KA210A, KA215-Z front panel common point is that the whole are using a round arc design, the material are made of aluminum alloy, the difference is that KA210 and KA210A with USB power supply port, KA215-Z does not, KA215-Z with an emergency key, while the KA210 and KA210A do not, in addition, KA210A with a fingerprint.KA210A, KA210, KA215-Z use one rear panel, the material is made of aluminum alloy.



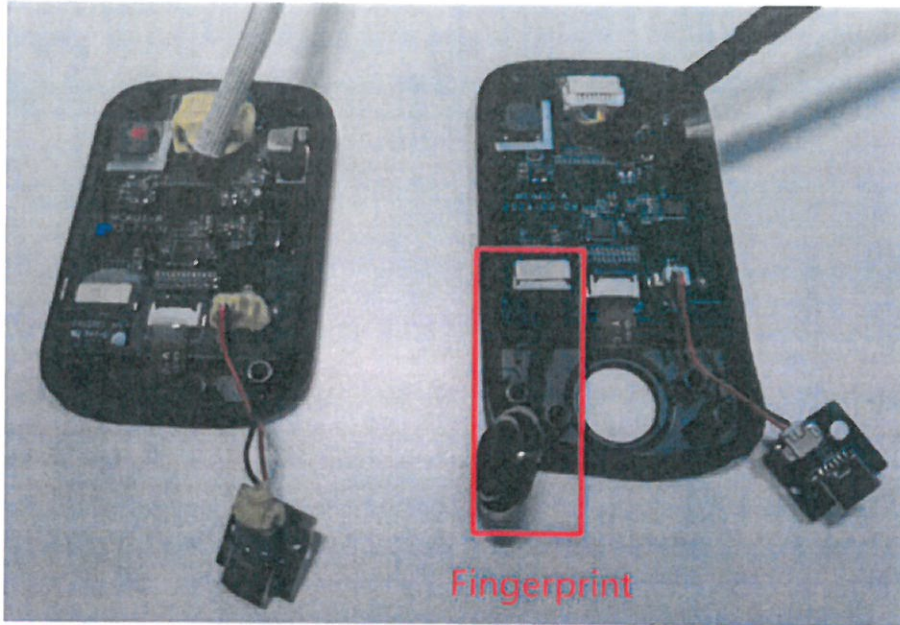
# Shenzhen Kaadas Intelligent Technology Co., Ltd.

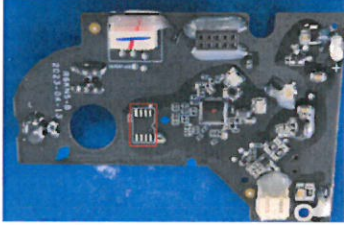
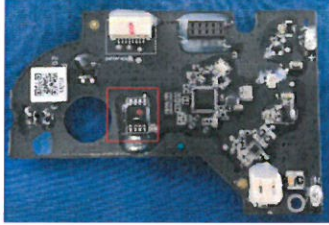
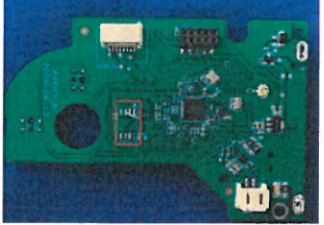
## 3.Product Schematic,Block Diagram Description

The KA210/KA210A/KA215-Z have the same schematic but slightly different block diagrams, e.g. the KA210 and KA215-Z do not have the fingerprint section and the associated accessory flash. The main circuit is the same for all three models, and If the model does not come with fingerprints, there be no fingerprint function module installed. Because the PCB is the same, the PCB will not place the component about fingerprint circuit.



# Shenzhen Kaadas Intelligent Technology Co., Ltd.



	KA210	KA210A	KA215-Z
Fingerprint identification chip			

The KA210/KA210A/KA215-Z wireless module of the models are the same.

Yours sincerely,

**Signatory**

Jing Rao

Name	Jing Rao
Position	Business Director
Company Name	Shenzhen Kaadas Intelligent Technology Co., Ltd.
Address	Floor 11, Building B2, Phase 2, Creative City, Xiandong Road, Xili Community, Xili Street, Nanshan District, Shenzhen, Guangdong, 518000, China
Tel / Fax	0755-86668868/ 0086-0755-86958295
E-mail	chenyutong@kaadas.com