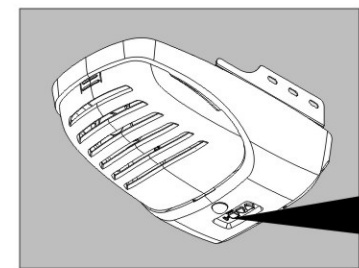


# WIRELESS KEYPAD MODEL:GK-R

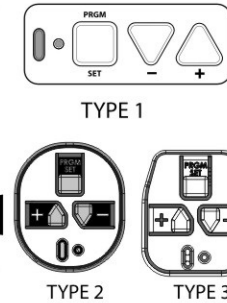
## 1 Set an initial PIN code:

- 1 Press and hold the PROGRAM button for 3 seconds then release(until LED blinks two times and two beeps heard.)
- 2 Enter a 4-digit personal identification number (PIN) of your choice:  $\frac{?}{PIN} \frac{?}{PIN} \frac{?}{PIN} \frac{?}{PIN}$
- 3 Press the UP/DOWN button.

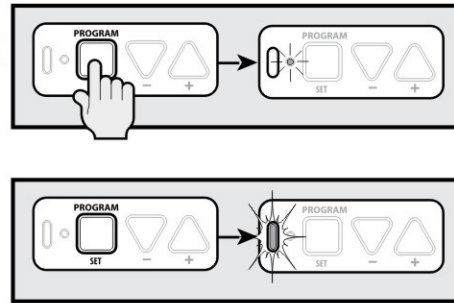
## 2 Put garage door opener into programming mode:



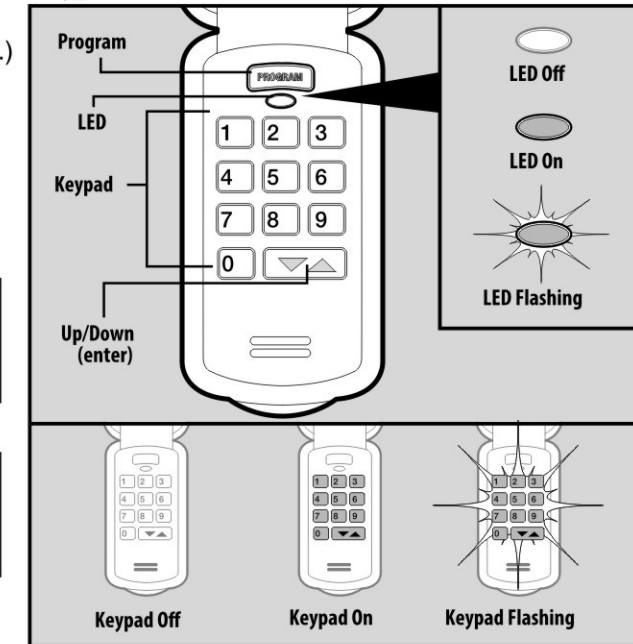
-OR-



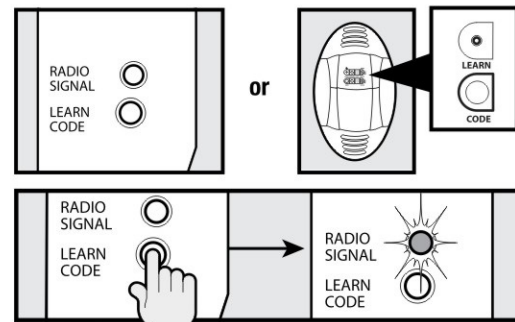
1. Press and hold the program button until the round LED turns blue, then release.
2. The round LED will go out and the long LED will begin flashing purple.



### Keypad Overview



### Openers manufactured between 1995 to 2011 and all external receivers



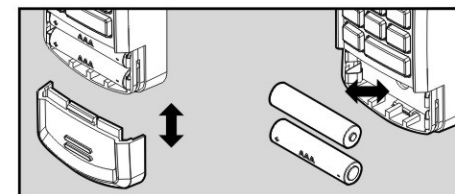
1. Press & Release Learn Code button once. The red LED will begin to flash.

## 3 Sync keypad with your garage door opener:

- 1 Put your garage door opener into programming mode,you will have 30 seconds to perform this step.
- 2 Within 30 seconds,Enter the 4-digit PIN then press the UP/DOWN button 3 to 4 times slowly on keypad until garage door opener operates.(if failed,repeat above steps)
- 3 To test operation,enter the PIN then press the UP/DOWN button, the garage door opener will activate,the keypad will remain for 10 seconds,during this 10 seconds press the UP/DOWN button,it can be used to stop,start or reverse the door.(⚠ if you want to exit right away,just press any other button on keypad.)

### REPLACING BATTERIES

- If the keypad back-lighting fails to operate, Batteries may require replacement.
- Programming will not be lost during battery change.



1. Remove battery cover and batteries.
2. Replace batteries with same type alkaline (AAA) and check for proper direction of (+) and (-) terminals. Rechargeable batteries are NOT recommended.

- ⚠ if sync is failed,please repeat above steps to re-sync several times until it works.
- ⚠ The Keypad can program 5 different PIN for 5 different garage door openers.
- ⚠ To program the Keypad to more than one garage door opener,repeat the steps above using a new PIN and reprogram with each additional garage door opener.

### RESETTING THE KEYPAD (FACTORY DEFAULT) OR CHANGE AN EXISTING PIN

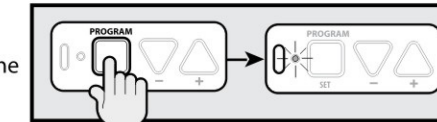
If the keypad has already been programmed or at any time the programming should be erased and started from the factory default, follow these steps.

- 1 Press and hold the UP/DOWN button first.
- 2 then press and hold the PROGRAM button too.
- 3 wait 5 seconds,beeps heard,indicating the keypad has been reset.
- 4 Start at above STEPS to set a new PIN and re-sync with garage door opener.

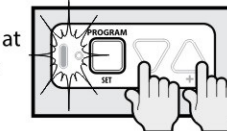
### ERASE MEMORY FROM GARAGE DOOR OPENER

New Openers

1. Press and hold the program button until the round LED turns blue, then release.



2. Press and hold the Up(+) Down (-) buttons at the same time, until the both LEDs flash blue and go OFF.



Openers manufactured between 1995 to 2011 and all external receivers

- To erase all remote devices from all other types of garage openers, Press and hold the Learn Code Button until the LED stops blinking.

## Trouble shooting

### Why does the keypad not sync with garage door opener ?

Solution1: re-set a new 4 PIN code, then re-sync keypad with garage door opener again refer to above steps.

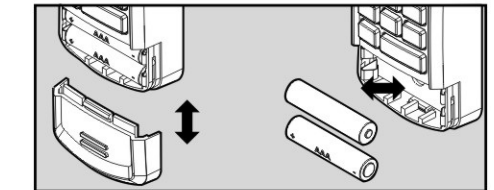
Solution2: the memory of your garage door opener maybe full,please erase memory from garage door opener then repeat above steps to re-sync keypad with garage door opener.

### MOUNTING THE KEYPAD

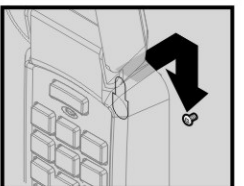
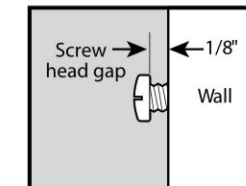
Keypad MUST be mounted within sight of the garage door(s) at least 5 feet above floor and clear of any moving door parts.

- Programming will not be lost during battery removal.

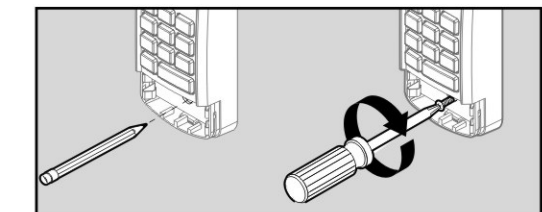
1. Remove battery cover and batteries.



2. Drill a 3/32" pilot hole for the top mounting screw.
3. Install included screw into pilot hole, leaving 1/8" gap between the screw head and wall.
4. Hook the slotted mount on back of keypad over the screw.



5. Mark and drill a 3/32" pilot hole for the bottom screw and secure keypad to the wall. (Do not over-tighten).
6. Reinstall batteries.



**FCC Caution:**

This device complies with part 15 of the FCC Rules. Operation is subject to the following two conditions: (1) This device may not cause harmful interference, and (2) this device must accept any interference received, including interference that may cause undesired operation.

Any Changes or modifications not expressly approved by the party responsible for compliance could void the user's authority to operate the equipment.

**Note:** This equipment has been tested and found to comply with the limits for a Class B digital device, pursuant to part 15 of the FCC Rules. These limits are designed to provide reasonable protection against harmful interference in a residential installation. This equipment generates uses and can radiate radio frequency energy and, if not installed and used in accordance with the instructions, may cause harmful interference to radio communications. However, there is no guarantee that interference will not occur in a particular installation. If this equipment does cause harmful interference to radio or television reception, which can be determined by turning the equipment off and on, the user is encouraged to try to correct the interference by one or more of the following measures:

- Reorient or relocate the receiving antenna.
- Increase the separation between the equipment and receiver.
- Connect the equipment into an outlet on a circuit different from that to which the receiver is connected.
- Consult the dealer or an experienced radio/TV technician for help.

The device has been evaluated to meet general RF exposure requirement. The device can be used in portable exposure condition without restriction.