

Welcome to **omni**[®] Control System



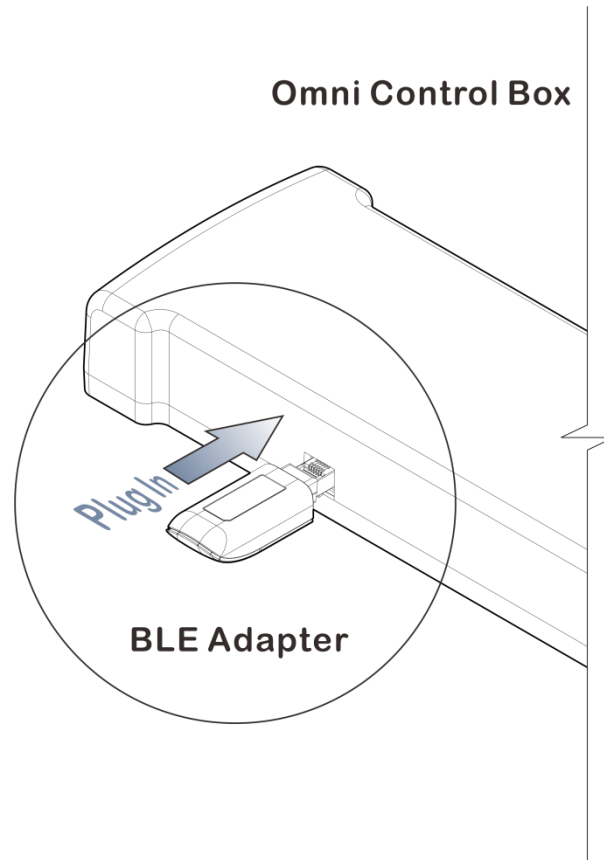
User Manual

BLE Adapter

Version: 1.0

Installation

1. Plug the Bluetooth adapter into a powered OMNI desk control box.



2. Download the software you want in App Store or Google Player store and following instructions in the program. You can also download software via scanning the following QR Code



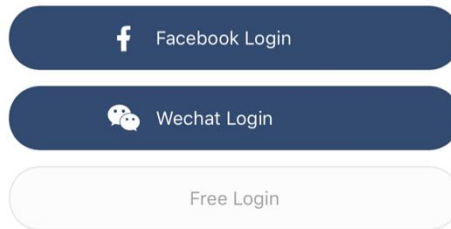
- For Apple device, please search "eDesk" and download in App store, then install the app to your device.
- For Android device, please search "iDesk" and download in Google Play Store, then install the app into your device.

Setup

1. Login

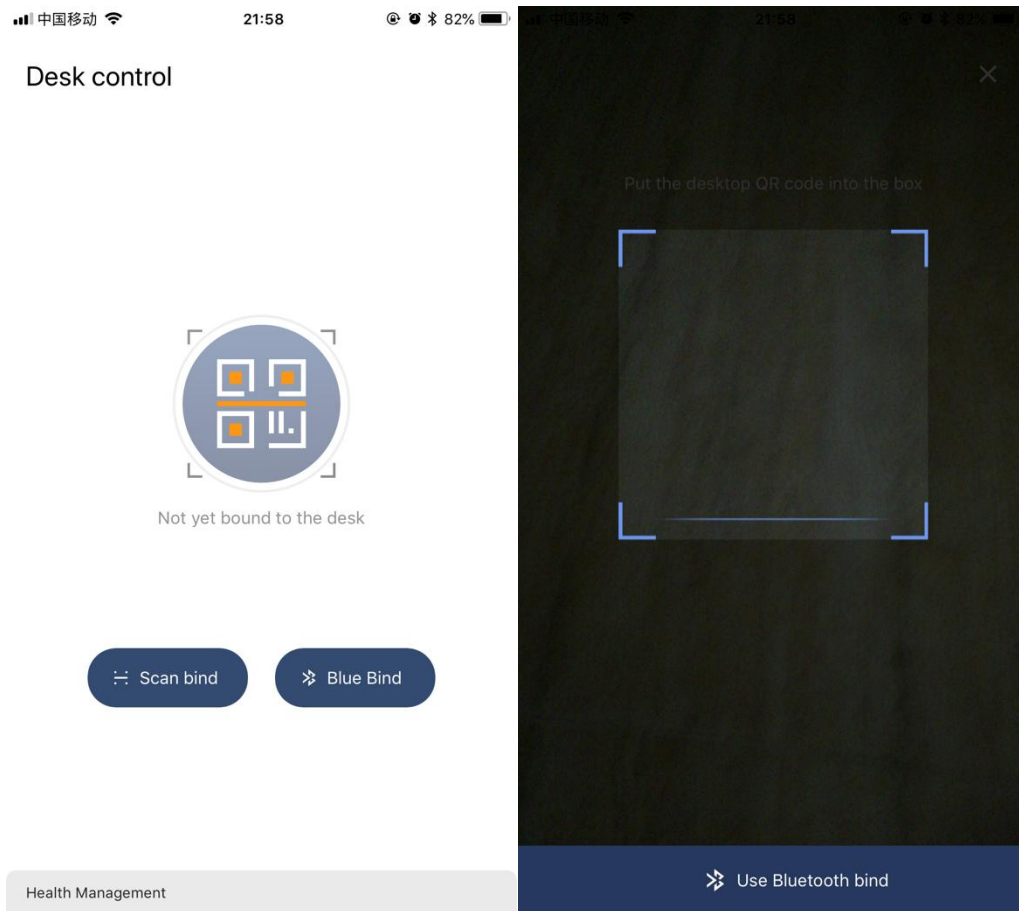
Open iDesk app, directed to the login page, 3 ways to login:

- Facebook Account
- WeChat Account
- Free Login (visitor)



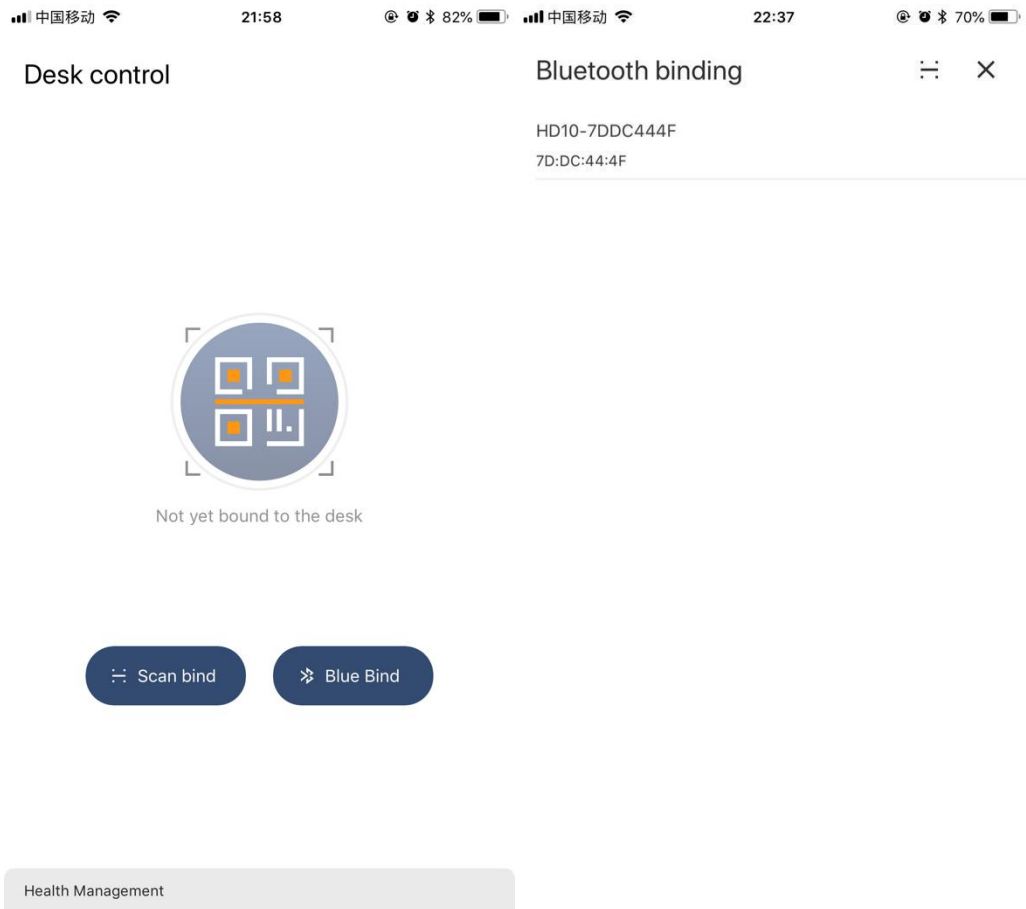
2. Scan binding

Bind the desk by scanning the unique QR code with the app (pls. make sure the phone Bluetooth is active when you bind the desk)



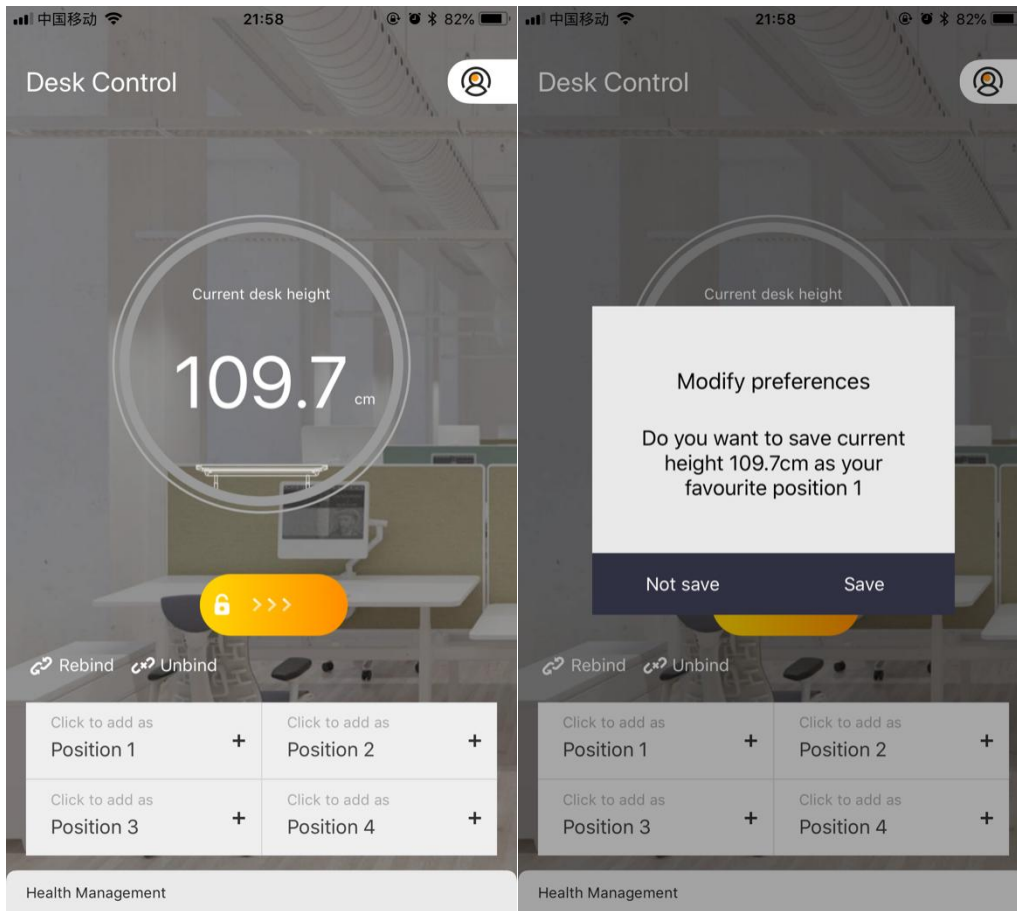
3. Bluetooth binding

Search desks nearby via Bluetooth, choose the desk to bind (make sure the phone Bluetooth is turned on when binding the desk)

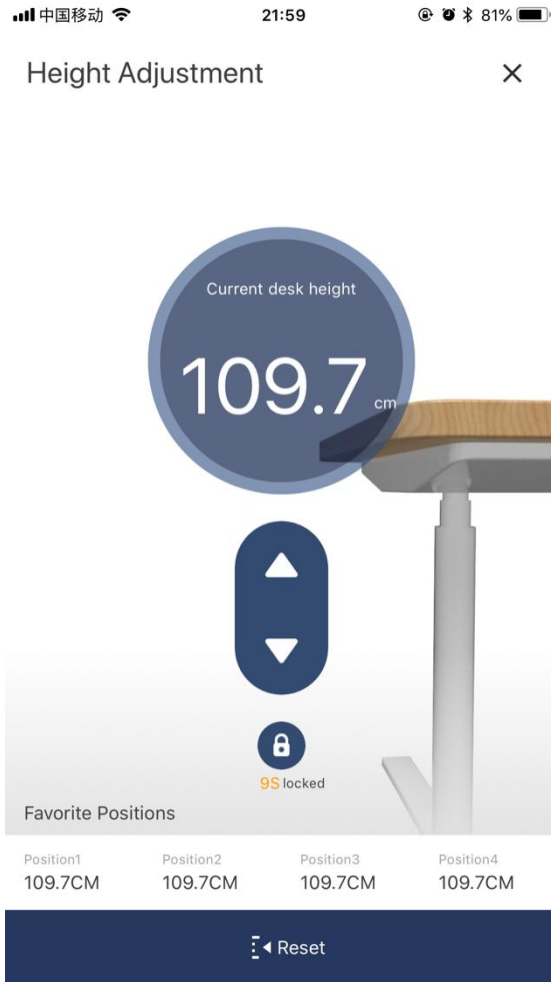


4. Favorite memory positions

You can just press “+” button to store your favorite current height positions(up to 4). .



4 stored positions can be directly accessed by pressing the corresponding button. By pressing the memory button, the application will take you to your favorite position.



5. Desk control

Up drive

Moves the desk upwards while pressing the “▲” button.

Down drive

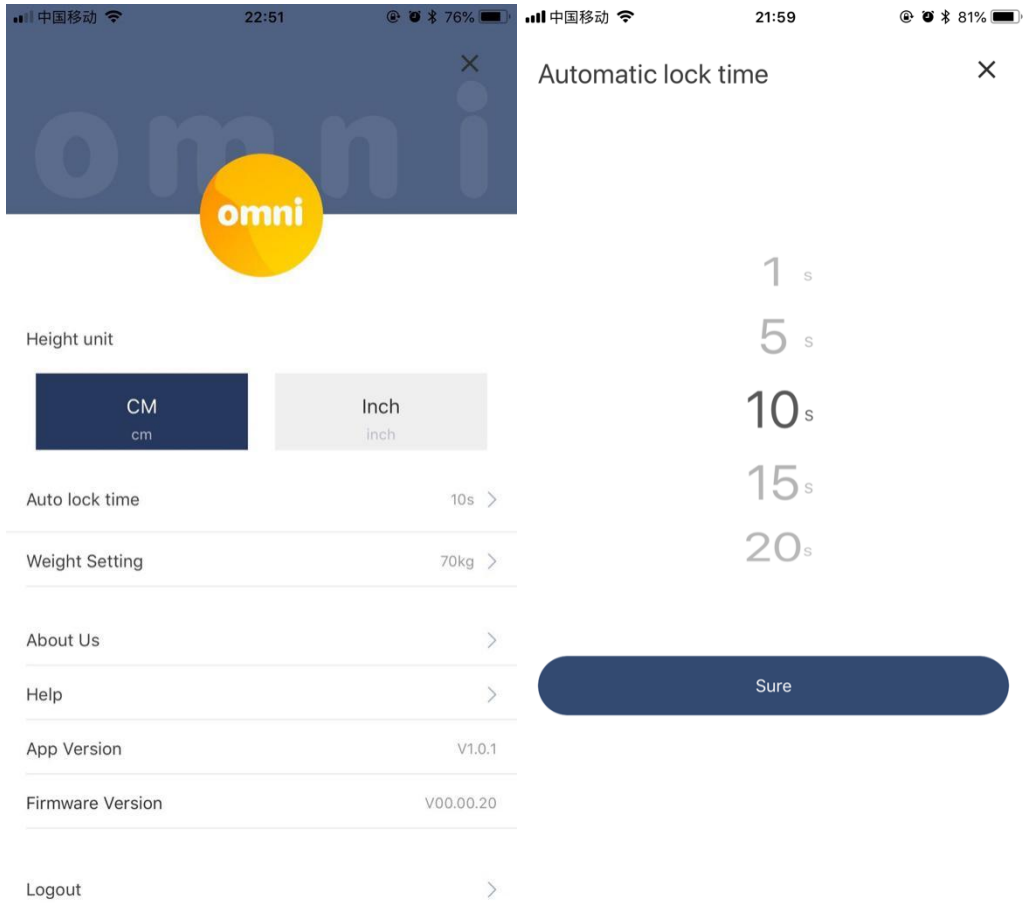
Moves the desk downwards while pressing the “▼” button.

Reset drive

Press “Reset” button to make the desk go down to the lowest height as default factory setting.

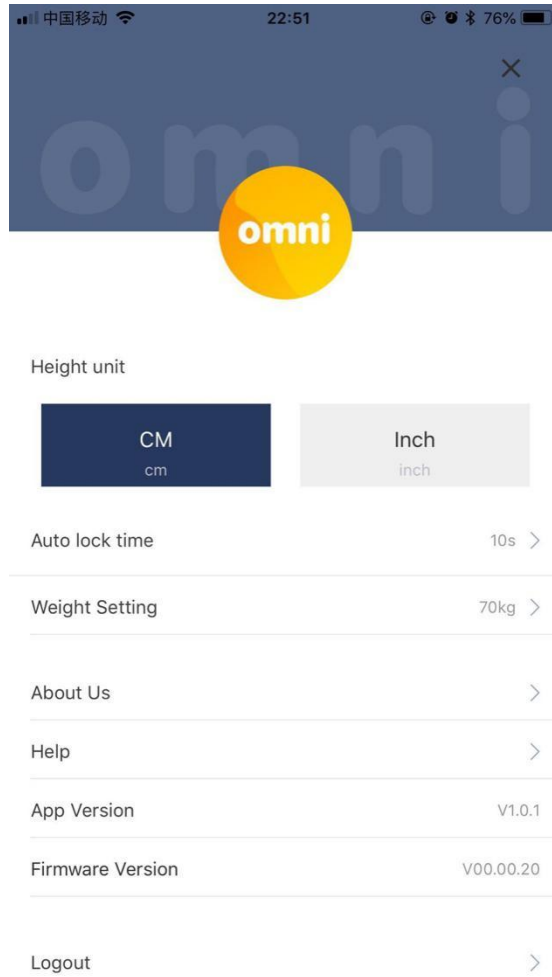
Automatic Lock

You may set automatic lock time to avoid unexpected operation. When the lock time countdown reach, it will return to the home page.



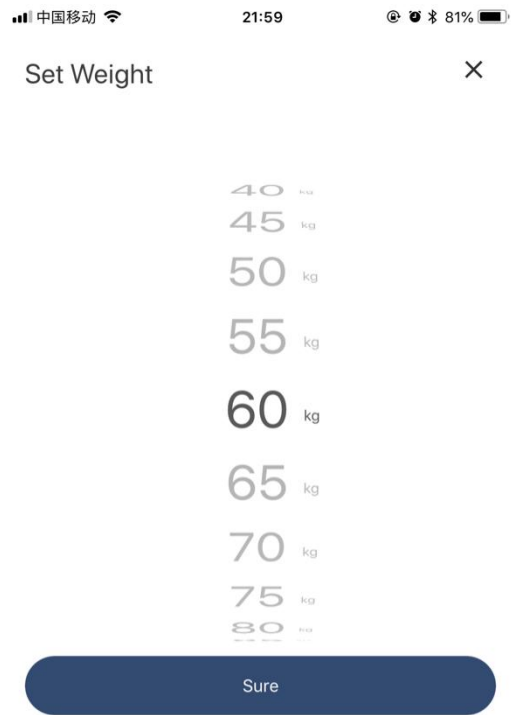
6. Set the desk height unit

Choose in which units you want the height in, cm or inches.



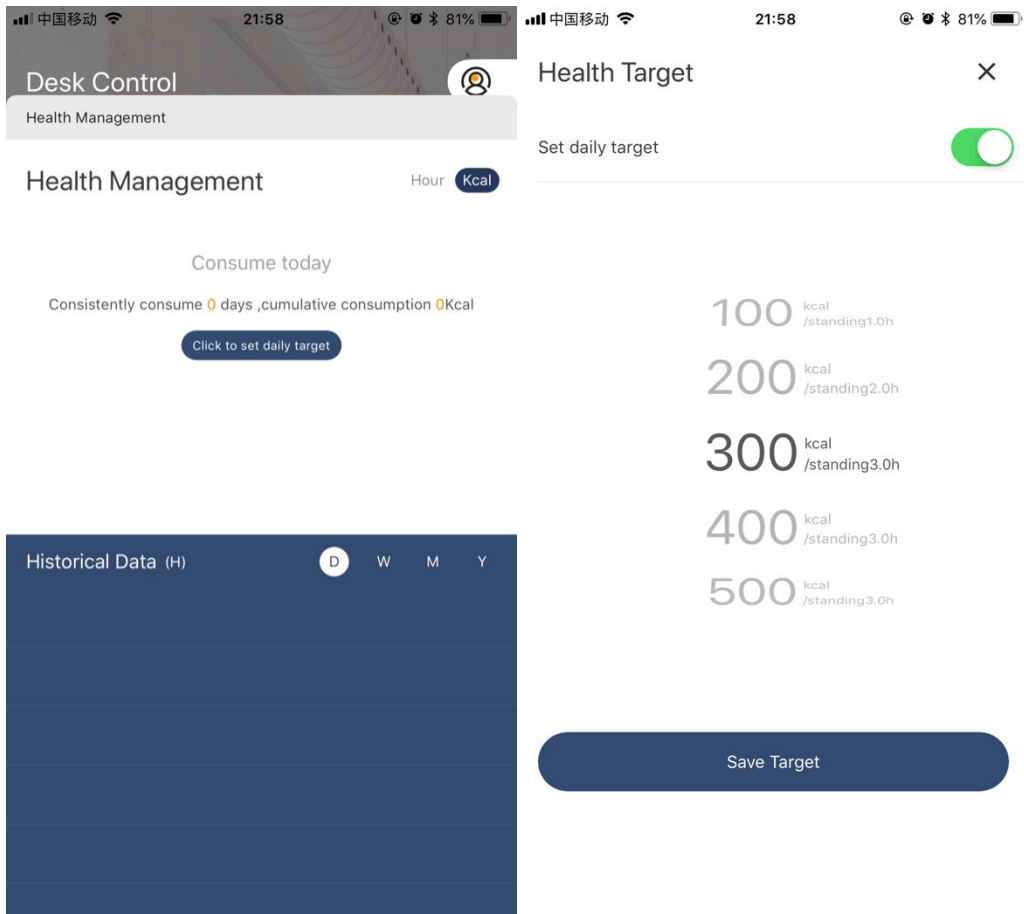
7. Set weight

The app can calculate the user's calorie consumption based on weight you set.



8. Set health target

Users can set daily calorie consumption targets, providing the following options.



ChaRacters

Name: BLE Adapter

Model: HD10

Weight: 10g

Input: DC5V(MAX7V)

Power: < 50mA

Protocol: BLE4.0

Operating temperature: +5°C - +40°C

Compatible with: iOS 9.0 and above, Android 4.4 and above, Windows, Linux.

Certificate

FCCID: 2AQX6-HD10

This device complies with Part 15 of the FCC Rules. Operation is subject to the following two conditions: (1) this device may not cause harmful interference, and (2) this device must accept any interference received, including interference that may cause undesired operation.

Vendor

Yangzhou OMNI Electric Technology Co., Ltd.

Address: Youyi Street 18, Zhenwu Town, Jiangdu District, Yangzhou, P.R.C.

Service Phone: +86 514 8627 1024

Website: www.omnidesking.com

FCC Statement

This equipment has been tested and found to comply with the limits for a Class B digital device, pursuant to Part 15 of the FCC Rules. These limits are designed to provide reasonable protection against harmful interference in a residential installation. This equipment generates uses and can radiate radio frequency energy and, if not installed and used in accordance with the instructions, may cause harmful interference to radio communications. However, there is no guarantee that interference will not occur in a particular installation. If this equipment does cause harmful interference to radio or television reception, which can be determined by turning the equipment off and on, the user is encouraged to try to correct the interference by one or more of the following measures:

- Reorient or relocate the receiving antenna.
- Increase the separation between the equipment and receiver.
- Connect the equipment into an outlet on a circuit different from that to which the receiver is connected.
- Consult the dealer or an experienced radio/TV technician for help.

This device complies with part 15 of the FCC Rules. Operation is subject to the following two conditions: (1) This device may not cause harmful interference, and (2) this device must accept any interference received, including interference that may cause undesired operation.

Changes or modifications not expressly approved by the party responsible for compliance could void the user's authority to operate the equipment.

Made In China