

◆◆ Optional Functions

·Time Out Timer(TOT)
The purpose of the TOT is to prevent any single person from using a channel for an extended period of time.If the transmission continues beyond the set time,the transceiver will stop transmission and give out alarms.To stop the alarms,please release the PTT switch and the transceiver will resume to the state of standby.

·Battery Power Saving
The radio would reduce its power consumption if there is no signal or no operation.When the channel is unoccupied or no operated for more than 10 seconds,the battery power-saving function is activated. When signal is received or with operation,the battery saving function would be off automatically.

·Low Battery Warning
If the battery power falls to the predetermined value during transmission, the status indicator will flash red. Please replace the battery or charge it!

◆◆ Optional Functions

·Monitor
This operation is useful when you want to adjust the volume level or need to receive weak signals. When long press the monitor key, the status indicator is green.

·CTCSS/DCS
The purpose is to avoid the mutual interference among different users, to avoid hearing the irrelevant calls and the interference signals.

·Alarm
The alarm function has local alarm and remote alarm,which can be selected by the writing frequency software.

·VOX
VOX is a function that voice can be launched without pressing the PTT key. VOX gain inversion level refers to the voice sensitivity,it has level 1-9!

◆◆ Optional Functions

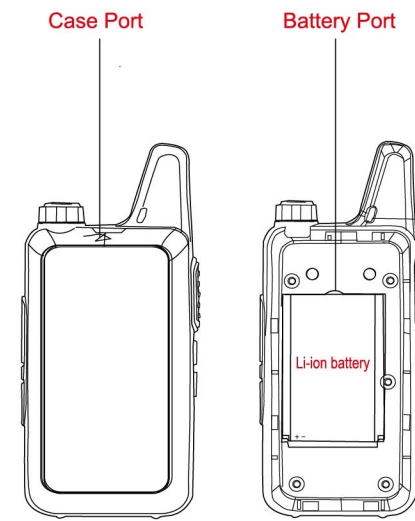
·Keylock
When power on,long press **【Channel +】** **【Channel -】** keys,open the keyboard; operate it again, lock the keyboard.

·Voice Prompt
The function is convenient for you to know the current channel of the radio when you are using at night or in the dark.

·Busy Channel Lockout
The function can prevent interfering other intercom calls from the same channel.

·CDCSS Mode
It is valid only when you set the CDCSS on the channels. This function has two selections: "normal signaling" and "special signaling". Normal Signaling refers to the CDCSS codes on the channels is ordinary codes, we can talk to each other with the same CDCSS; Special Signaling refers to the CDCSS codes on the channels is special processed codes,only with the same CDCSS and while setting a special signaling,then we can talk to each other.

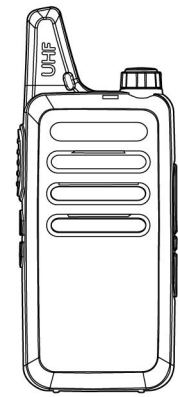
◆◆ Attaching & Removing the battery



◆◆ Technical Parameters

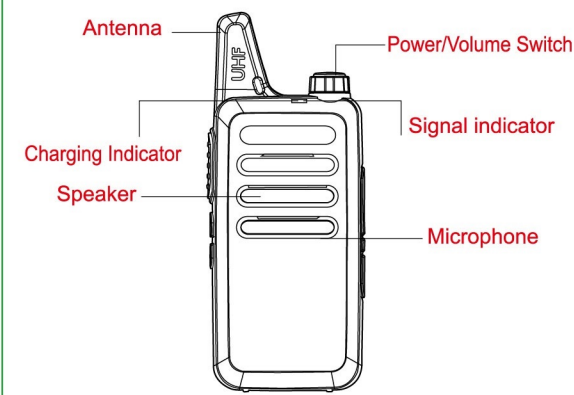
General	
Frequency Range	40.000-40.700MHz,47.000-47.700MHz
Rated Voltage	DC3.7V
Memory Channel	22
Antenna	internal antenna
Dimension	136*56*22mm
Weight	90g
Transmitter	
Output Power	2W/0.5W
Modulation Mode	FM(F3E)
Max. Frequency Deviation	≤ 2.5kHz
Sparious Radiation	<-60dB
Preemphasis Character	60dB
Emission Current	≤ 1000mA
Receiver	
Sensitivity	≤0.16uV(12dB SINAD)
Squelch Sensitivity	≤0.2uV
Intermodulation Interference Resistance	50dB
Audio Power	≥300mW
Receiving Current	≤100mA
Standby Current	20mA

USER'S MANUAL

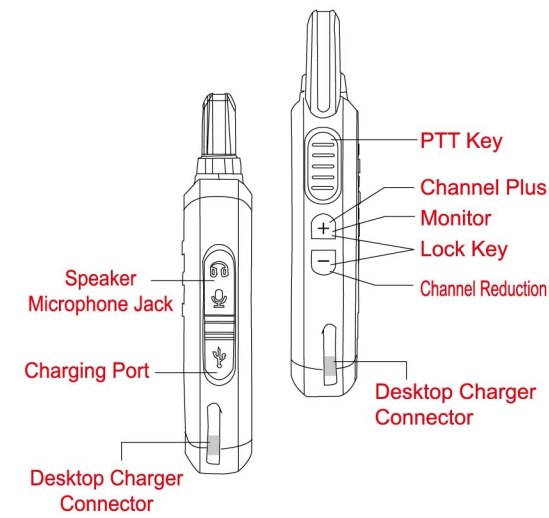


- 16 channels
- Keylock
- Strong anti-interference
- Super receiving
- Shatter-resistant and dustproof
- Special signaling
- Scan, VOX and alarm
- Chinese/English voice prompt

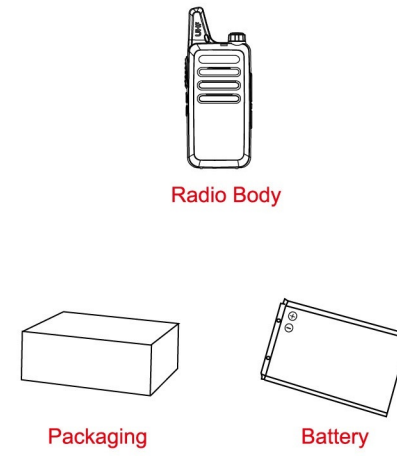
◆◆ Function Operation



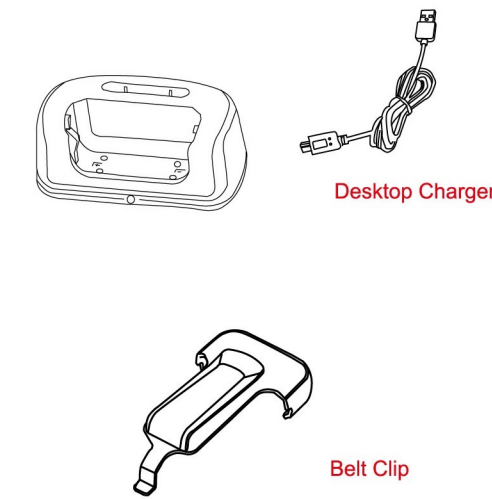
◆◆ Function Operation



◆◆ Standard Accessories



◆◆ Optional Accessories



FCC Statement:

Any Changes or modifications not expressly approved by the party responsible for compliance could void the user's authority to operate the equipment.

This device complies with part 15 of the FCC Rules. Operation is subject to the following two conditions:

- (1) This device may not cause harmful interference, and
- (2) This device must accept any interference received, including interference that may cause undesired operation.

ISED RSS Warning:

This device complies with Innovation, Science and Economic Development Canada licence-exempt RSS standard(s). Operation is subject to the following two conditions:

- (1) this device may not cause interference, and
- (2) this device must accept any interference, including interference that may cause undesired operation of the device.

Le présent appareil est conforme aux CNR d'ISED applicables aux appareils radio exempts de licence. L'exploitation est autorisée aux deux conditions suivantes:

- (1) l'appareil ne doit pas produire de brouillage, et
- (2) l'utilisateur de l'appareil doit accepter tout brouillage radioélectrique subi, même si le brouillage est susceptible d'en compromettre le fonctionnement.

RF Exposure Information (FCC SAR) :

RF Exposure Information (SAR) : The SAR limit of USA (FCC) is 1.6W/Kg averaged over one gram of tissue. Product Type: two way radio, model number: KD-C1 (FCC ID: 2AQX5KD-C1) has also been tested against this SAR limit. The device was test for typical body-worn operations and head face up operations keep the Tracker at least 25mm from the face.when worn on body must be correct back clip for this product,Use of non-approved accessories may result in exposure levels which exceed the uncontrolled environmental RF exposure limits.

RF Exposure Information (ISED SAR) :

The SAR limit of IC is 1.6W/Kg averaged over one gram of tissue. Product Type: two way radio, model number: KD-C1 (IC: 24229-KDC1) has also been tested against this SAR limit. The device was test for typical body-worn operations and head face up operations keep the Tracker at least 25mm from the face.when worn on body must be correct back clip for this product,Use of non-approved accessories may result in exposure levels which exceed the uncontrolled environmental RF exposure limits.

Le SAR de IC est limité à 1.6W/Kg, avec une moyenne par gramme.Produits

Type:two way radio, type: KD-C1 (IC: 24229-KDC1) a également été testé pour la limite SAR.Ce dispositif est utilisé pour tester des opérations d 'usure corporelle typiques et des opérations en direction du Haut de la tête, de manière à maintenir une distance d' au moins 25 mm entre le traceur et le visage.
