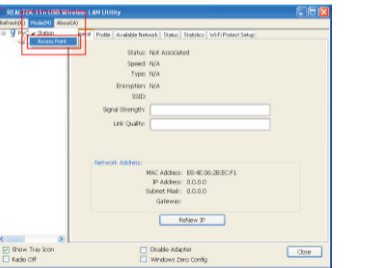


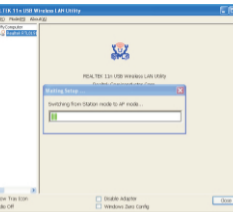
## Wireless Network Card User Manual

Note: According to the operating system to choose the corresponding version of the driver for installation (Download address, <http://www.sz-huashi.com>)

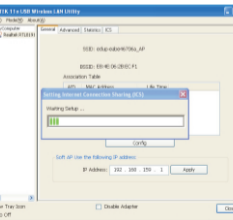
01. After finish driver installation, double click on the desktop or click in the taskbar at right bottom corner to open the driver software;  
02. Click “Mode(M)”, then choose “Access Point” mode;



03. Switching from “Station mode” to “AP mode”, as following:



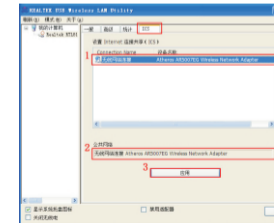
Setting Internet Connection Sharing(ICS);meanwhile, the icon changes from to



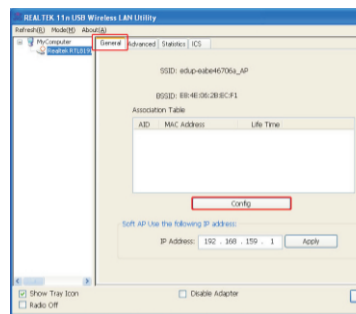
Do not interrupt during switching, after finishing, it shows as following:



04. Click “ICS” as the 1st step, choose the network adapter which is connecting the network as the 2nd step, click “Apply” as the 3rd step;

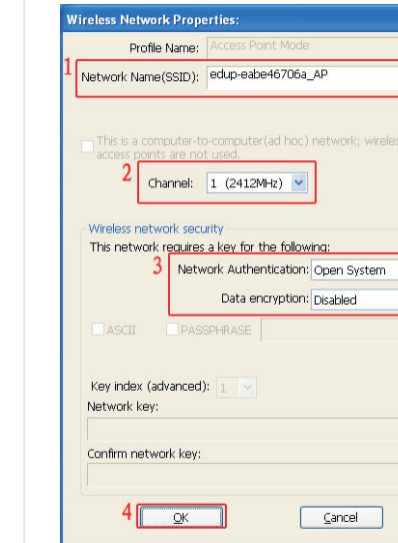


05. Click the “General” then click “Config” ;

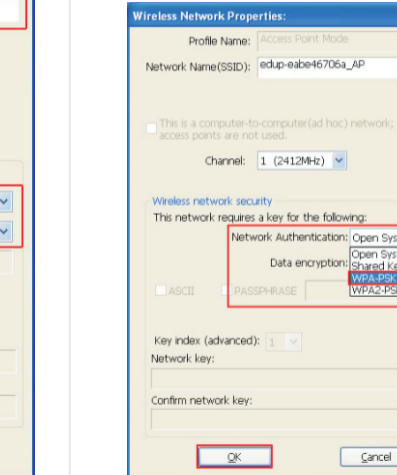


06. The “Wireless Network Properties” dialog box will show as following:

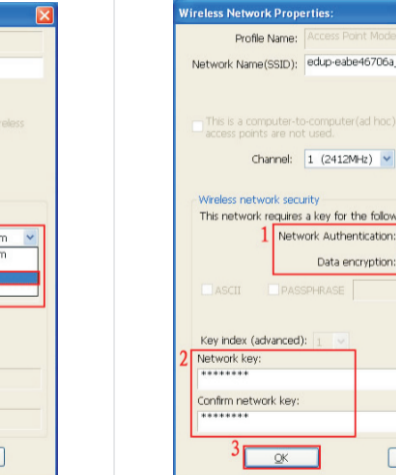
1st Step: You can change the SSID;  
2nd Step: You can choose a Channel, the default is “1 (2412MHz)”  
3rd Step: There are two ways to set the network key:  
1). Open System, there is no password



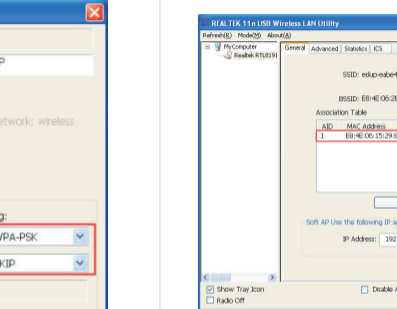
2) “WPA-PSK”, click “Network Authentication”, then choose the “WPA-PSK”



The “Data encryption” will show as follow, then put a Network key and confirm, click “OK” ;



07. The “Association Table” will list the devices which are connecting your AP, show as following:



FCC Caution.

This device complies with part 15 of the FCC Rules. Operation is subject to the following two conditions:

- (1) This device may not cause harmful interference, and
- (2) this device must accept any interference received, including interference that may cause undesired operation.

Any Changes or modifications not expressly approved by the party responsible for compliance could void the user's authority to operate the equipment.

Note: This equipment has been tested and found to comply with the limits for a Class B digital device, pursuant to part 15 of the FCC Rules. These limits are designed to provide reasonable protection against harmful interference in a residential installation. This equipment generates uses and can radiate radio frequency energy and, if not installed and used in accordance with the instructions, may cause harmful interference to radio communications. However, there is no guarantee that interference will not occur in a particular installation. If this equipment does cause harmful interference to radio or television reception, which can be determined by turning the equipment off and on, the user is encouraged to try to correct the interference by one or more of the following measures:

- Reorient or relocate the receiving antenna.
- Increase the separation between the equipment and receiver.
- Connect the equipment into an outlet on a circuit different from that to which the receiver is connected.
- Consult the dealer or an experienced radio/TV technician for help.

The device has been evaluated to meet general RF exposure requirement. The device can be used in portable exposure condition without restriction.

Operations in the 5.15-5.25GHz band are restricted to indoor usage only.