



## **FCC/ISED Test Setup Photos**

**FOR:** Digi Wireless Design Services, Inc.

**Marketing Name:** 51914

**Product Description:** Accepts wireless transfer of end node sensor data.  
Uploads data to remote server periodically for tracking purposes.

**FCC ID:** 2AQVA-ONVAHUB51914

**IC ID:** 24318-ONVAHUB51914

Addition to Report #:

EMC\_DIGII\_047\_18001\_FCC\_22\_24\_27\_ISED

EMC\_DIGII\_047\_18001\_FCC\_15.407\_ISED\_Zigbee\_DTS

EMC\_DIGII\_047\_18001\_FCC\_15.247\_ISED\_BLE\_DTS

**DATE:** 01/18/2019

***CETECOM Inc.***

411 Dixon Landing Road ♦ Milpitas, CA 95035 ♦ U.S.A.

Phone: + 1 (408) 586 6200 ♦ Fax: + 1 (408) 586 6299 ♦ E-mail: [info@cetecom.com](mailto:info@cetecom.com) ♦ <http://www.cetecom.com>

*CETECOM Inc.* is a Delaware Corporation with Corporation number: 2905571

---

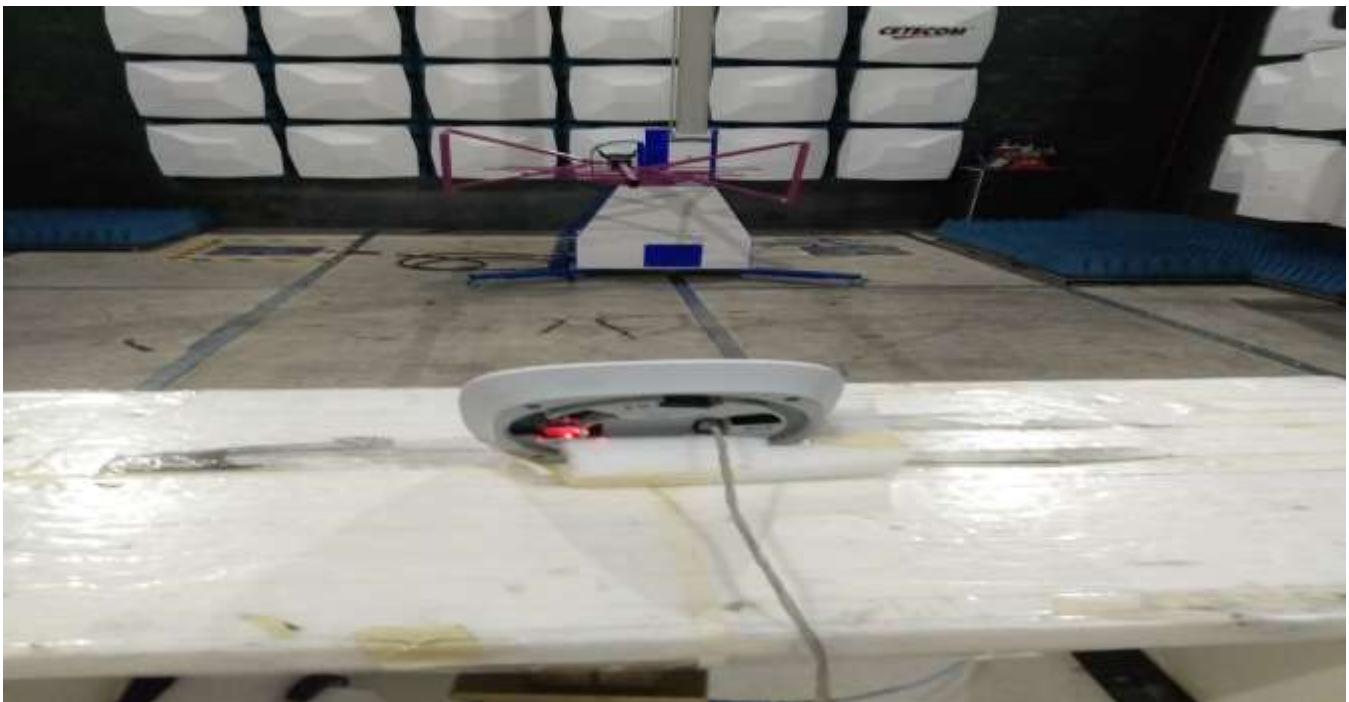
Radiated Measurements

---

9 KHz to 30 MHz



30 MHz to 1 GHz



1 GHz to 3GHz



3 GHz to 18GHz



18 GHz to 26 GHz





## AC Conducted Measurements

---

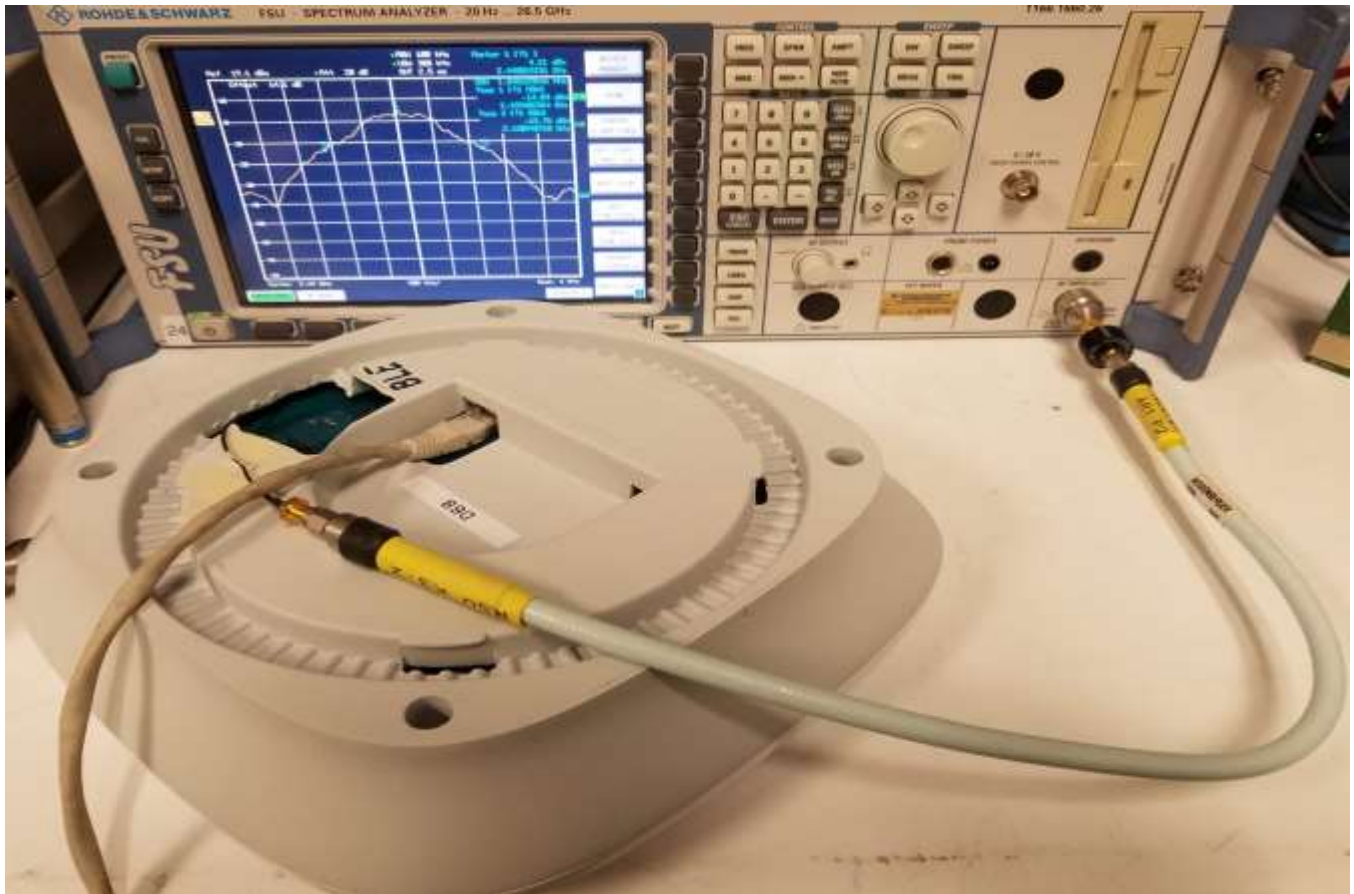
Power over ethernet



AC power supply



## Conducted Emissions measurements

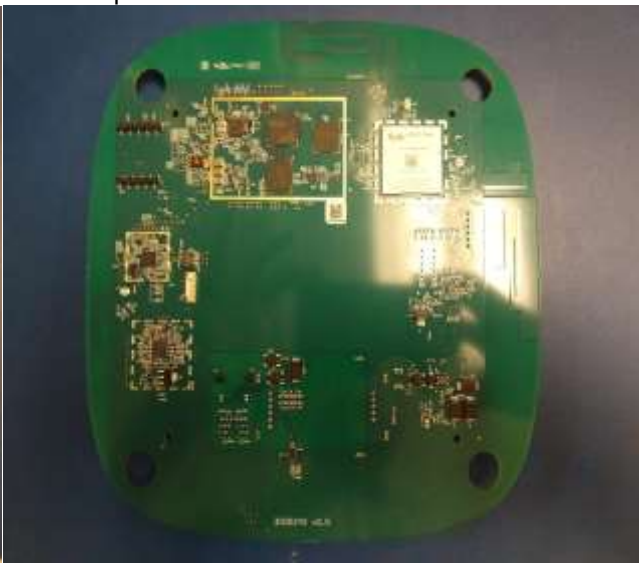


EUT Photos

Top view with shields



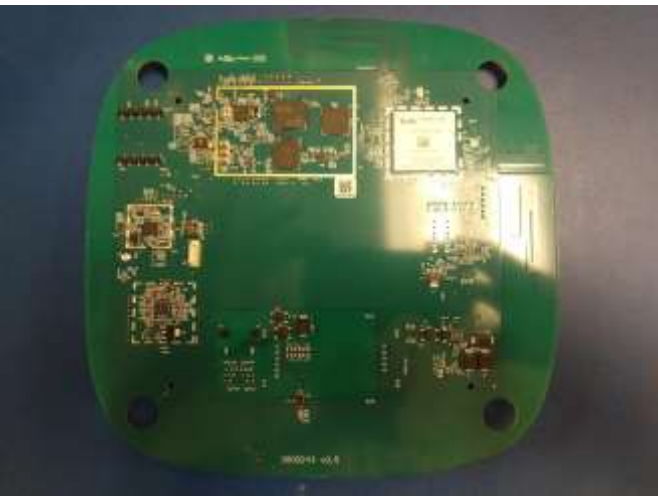
Top view with shields



Bottom view with shields



Bottom view without shields



Date	Report Name	Changes to report	Report prepared by
01/18/2019	EMC_DIGII_047_18001_FCC_ISED_Setup_Photos	Initial Version	Issa Ghanma