



Twitter official account

Contact Us

Online Support: <https://www.terncy.com/service>

Telephone: 400-920-2823

E-mail: support@terncy.com

Shanghai Xiaoyan Technology Co.,Ltd. Made in China

Room 502,Buiding E, No.666, Shengxia Road, Shanghai,

China

Application Scenarios



1. Control Curtain

Choose "if... then..." automation and set rotation as condition, then select the curtain motor to execute action. After that, you can naturally control curtain by rotating Smart Dial.

9

Application Scenarios



2. Adjust Light

Choose "if... then..." automation and set rotation as condition, then select light to execute action. After that, you can adjust the light by rotating Smart Dial.

10

Application Scenarios



3. Change Volume

Choose "if... then..." automation and set rotation as condition, then select stereo equipment to execute action. After that, you can change the volume by rotating Smart Dial.

11

Application Scenarios



4. Control Switch

Choose "if... then..." automation and set keypress as condition, then select switch to execute action. After that, you can control switch by pressing Smart Dial.

12

Notes 1

1. Do not soak or wash your devices.
2. Keep products away from fire, high temperatures or any other extreme environment.

Notes 2

Home Center is required to enable Smart Dial to work with HomeKit technology. See <https://www.terncy.com> for more details.

Notes 3

We reserve the right to change or modify the manual.

13



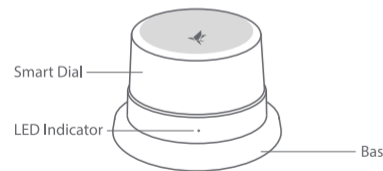
Manual of Terncy Smart Dial

V2.0 Edition

Smart Dial Introduction

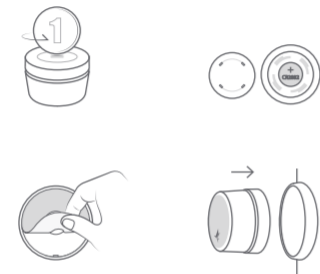
Terncy Smart Dial is a small but powerful control terminal. You can easily pull curtain, change color temperature or brightness of light, adjust the volume of sound and control on-off state of any other switches by only one Smart Dial, which lets you enjoy intelligent life in a natural way.

* The Smart Dial follows ZigBee 3.0 wireless protocol.



1

Install Guidance



1. Install the button cell battery into the Smart Dial.
2. Remove the adhesive tape from the base and place it as required.
3. Fix the Smart Dial on the base.

2

Indicator Light State



Indicator State	Indicator	Meaning
Green light flashes 10 times per sec.	Green light flashes 10 times per sec.	Connecting to Home Center nearby
Green light flashes every 2 sec.	Green light flashes every 2 sec.	Successfully connected to Home Center
Red light flashes 4 times per sec.	Red light flashes 4 times per sec.	Failed to connect to Home Center

3

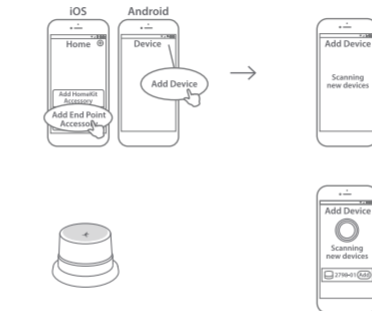
Download and Install App

Download the Terncy app from app markets or scan the QR code below. Follow the instructions within the app to connect the Switch Module to Home Center.



4

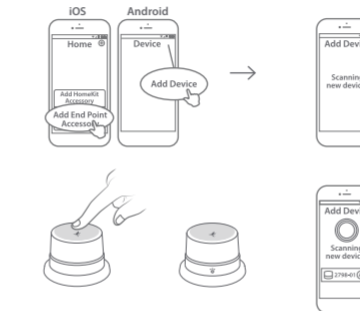
Setting Up The Accessory for The First Time



1. Click "Add Device" button in the Device tab of Terncy app.
2. New device can be found after 3 sec.

5

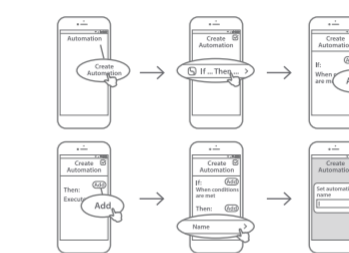
Set Up The Accessory Again



1. Click "Add Device" button in the Device tab of Terncy app.
2. Long press the button for 8 sec, the device will be found after 3 sec.

6

Set Up Automation



1. Enter "automation" page of Terncy app to set up an automation.
2. Take "if.. then.." automation type as an example.
 - ① Set "if" directive for condition;
 - ② Set "then" directive for action;
 - ③ Name the automation.

7

Set Up Automation



* Smart Dial supports rotation and press directive. It can simultaneously control curtain motor, light, switch, stereo volume and other equipments.

Automation type provided:

- a. "Schedule" is set for directive in a specific time.
- b. "Countdown" is set for directive after a countdown.
- c. "if.. then.." is set for custom directive.

8

Warranty Card

Xiaoyan's after-sales service includes:

Xiaoyan Tech shall remove any physical defects inherent in the device which are listed on the warranty card, free of charge, by replacing (at the sole discretion of Xiaoyan Tech) the defective device within a period of 15 days from the date of receipt by the consumer, and by repairing the defective components of the device within the period of 12 months from the date of receipt by the consumer.

*** The warranty may vary in different countries and regions.**

The Warranty Applies to:

1. surface damage resulting from mishandling during transport, or defects inherent in material or structure of the products;
2. failure of the buttons or indicator lights;
3. failure of wireless communication.

The Warranty Does Not Apply:

1. when the warranty period has expired;
2. to damage resulting from repairing and introducing alterations by unauthorized persons;
3. to damage caused by using accessories not recommended by the manufacturer;
4. to damage resulting from other avoidable causes.

FCC Statement:

Any Changes or modifications not expressly approved by the party responsible for compliance could void the user's authority to operate the equipment.

This device complies with part 15 of the FCC Rules. Operation is subject to the following two conditions: (1) This device may not cause harmful interference, and (2) this device must accept any interference received, including interference that may cause undesired operation.

FCC Radiation Exposure Statement:

This equipment complies with FCC radiation exposure limits set forth for an uncontrolled environment. This equipment should be installed and operated with minimum distance 20cm between the radiator & your body.

This transmitter must not be co-located or operating in conjunction with any other antenna or transmitter.

Note: This equipment has been tested and found to comply with the limits for a Class B digital device, pursuant to part 15 of the FCC Rules. These limits are designed to provide reasonable protection against harmful interference in a residential installation. This equipment generates uses and can radiate radio frequency energy and, if not installed and used in accordance with the instructions, may cause harmful interference to radio communications. However, there is no guarantee that interference will not occur in a particular installation. If this equipment does cause harmful interference to radio or television reception, which can be determined by turning the equipment off and on, the user is encouraged to try to correct the interference by one or more of the following measures:

- Reorient or relocate the receiving antenna.
- Increase the separation between the equipment and receiver.
- Connect the equipment into an outlet on a circuit different from that to which the receiver is connected.
- Consult the dealer or an experienced radio/TV technician for help.